

Ibeam

Supply Chain and Operations Management Software

Information is one of your most valuable assets. Accurate and timely information allows you to make more profitable decisions. Do you have the tools to cost effectively manage your vital information? By using Ibeam operations management software your answer can be “yes”.

The Ibeam operations management software provides a flexible and extensive framework to map your actual production operations. This framework allows you to capture vital operational data at the most logical process points.

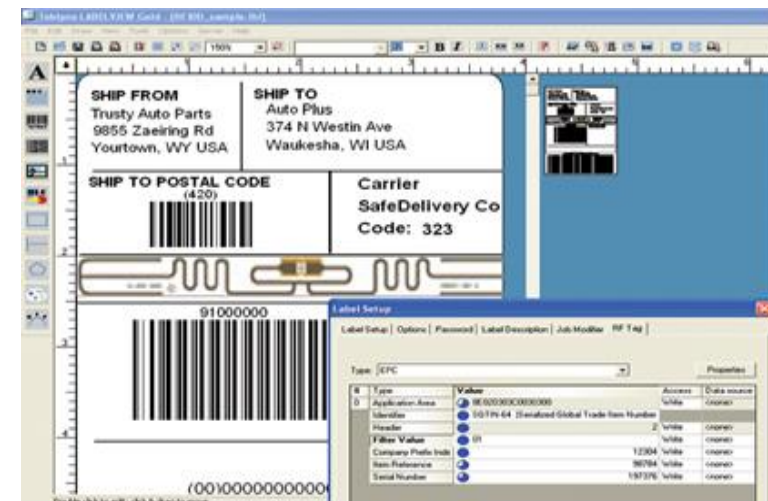
Ibeam management software provides quick and accurate data collection by integrating state of the art bar code scanning and labeling technologies. Portable collection devices allow reliable, an efficient collection of data directly from the source, whether that is the factory floor, work cells, receiving dock, warehouse or call center. This vital information enables your staff to manage operations more efficiently, measure processes more accurately, and improve productivity.

Ibeam is designed for use with today’s industry leading relational databases to ensure full scalability and connectivity. Ibeam will complement your existing investment in information technology infrastructure and strategies.

Ibeam management software combines data collection technologies, automating the collection of data, processing, and the delivery of this critical information to the people that can have an impact on the bottom line – **that is what Ibeam software delivers to you.**

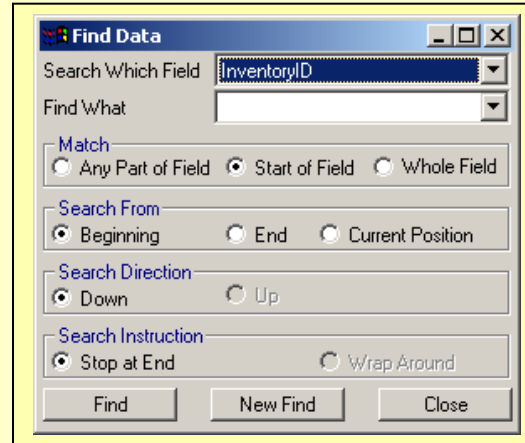


Please contact Si Amick at
803-622-6609 or si@datacomcolumbia.com



Find Data

A rich set of search Tools to quickly locate data.



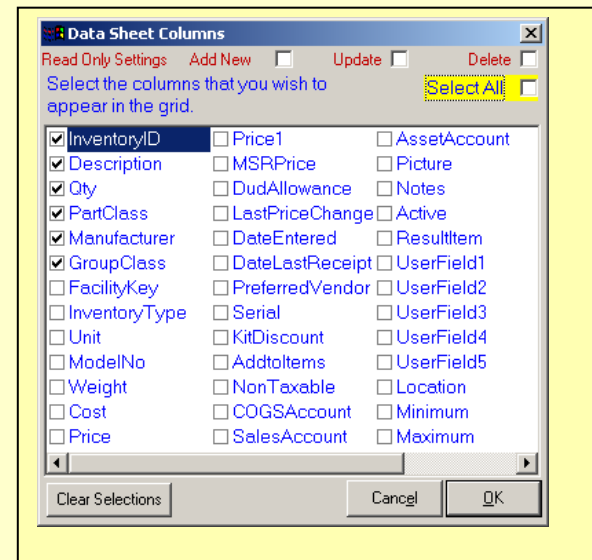
Zebra Printers



Datamax Printers

Grid Options

Fully customizable columns display and settings. Display only the columns of data that are import to you. Keep the display columns, size of columns and locations with your ID so next time they are in the same location.



Vendor Management

- Vendor list
- Vendor detail
- Notes

Control Center: Vendors

File Edit View Records Shop Floor Data Collection Tools Operations Add-Ins Help Debug

VendorId	Name	Address1	Address
CC-23	Carolina Cranks	1210 First Street	
CDW	Computer Discount Warehouse		
DCWH	Data Comm Warehouse	18 Surrey Court	
IGIW-01	Indigo Iron Works Inc.	1092 Bay St	
PCCON	PC Connection		
PPP2	Performance Pistons	6701 Grade Lane	

Vendor

File Edit View Tool Help

Vendors: 8

Information

Carolina Cranks

Vendor ID: CC-23

Name: Carolina Cranks

Address: 1210 First Street South Ext

City: Columbia St / Prov: SC Postal Code: 29209

Web Site: www.CarCranks.com

Phone: [] Ext: [] Fax: [] Ext: []

Order: [] Ext: [] Other: [] Ext: []

Account Number: []

Terms: []

Days on Terms: 0 Discount: 0

Rating: []

Contact Name: Richard Pittenger

Contact Title: []

E-Mail: []

Phone: [] **Ext**: []

You buy parts for inventory from this vendor. Checking this box will display this vendor in Parts Ordering.

Reimburses warranty claims to you. Checking this box will display this vendor in the warranty process.

Vendor On Hold - Place no order with this vendor.

Kit Management

View by:

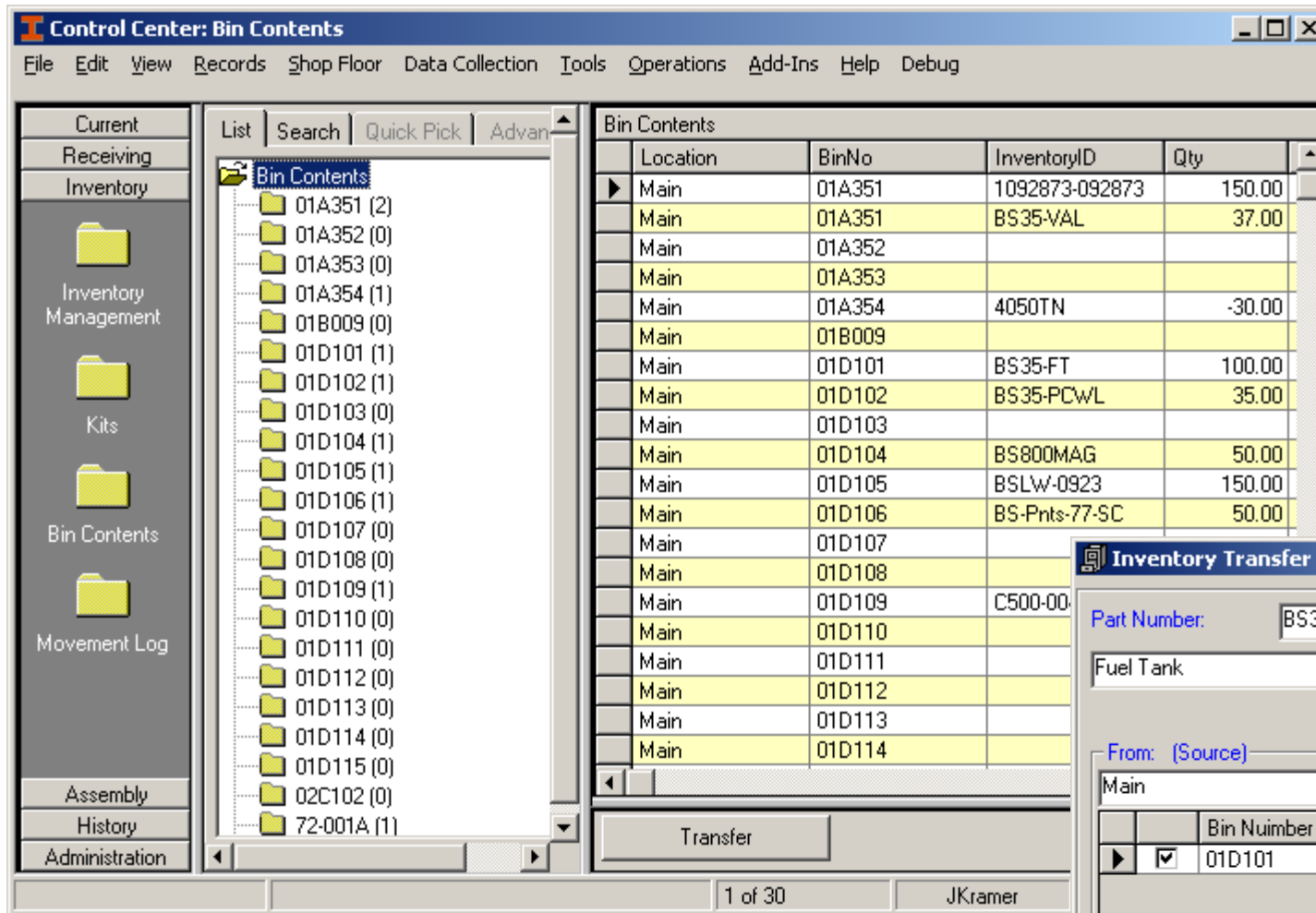
- Part Classification
- Manufacturer

InventoryID	InventoryType	Description	Unit	Manufact
BS1602CV	Kit	16 hp 2 clynder	ea	B&S
KT50V	Kit	5.0 HP air cooled	ea	B&S
KTBS35V	Kit	3.5 hp air-cooled	ea	B&S
KTBS40H	Kit	4.0 hp aircooled	Ea.	B&S
x	Kit		Ea.	

Qty	Part Number	Type	Description	Cost	Price
1	BS35BLK	Part		\$0.00	\$0.00
1	BS35-CRNK	Part	3.5 hp crank with 3 over 5 ratio groove pu	\$0.00	\$0.00
1	BS35-FT	Part	Fuel Tank	\$0.00	\$0.00
1	BS35-PCwL	Part	Pull start crowl	\$0.00	\$0.00
1	BS35-PST	Part	3.5 hp pistons with 3.45 over ratio groove	\$0.00	\$0.00
1	BS35QC	Labor		\$0.00	\$0.00
1	BS35-VAL	Part		\$0.00	\$0.00
1	BS800MAG	Part	8 inch magnito with fin coolers	\$0.00	\$0.00
1	BSLW-0923	Part	B&S spark plug lead wire	\$0.00	\$0.00
1	BS-Pnts-77-SC	Part	B&S points for single cylinder engine	\$0.00	\$0.00
1	C500-004312	Part	spark plug	\$0.00	\$0.00

Kit Details:

- Add parts directly from inventory, remove components and calculate total kit cost including labor.
- Apply labor as a kit component to capture labor cost for kit construction.
- Assign finished goods part number for completed kit.



Location	BinNo	InventoryID	Qty
Main	01A351	1092873-092873	150.00
Main	01A351	BS35-VAL	37.00
Main	01A352		
Main	01A353		
Main	01A354	4050TN	-30.00
Main	01B009		
Main	01D101	BS35-FT	100.00
Main	01D102	BS35-PCWL	35.00
Main	01D103		
Main	01D104	BS800MAG	50.00
Main	01D105	BSLW-0923	150.00
Main	01D106	BS-Pnts-77-SC	50.00
Main	01D107		
Main	01D108		
Main	01D109	C500-00	
Main	01D110		
Main	01D111		
Main	01D112		
Main	01D113		
Main	01D114		

Bin Contents

View By:

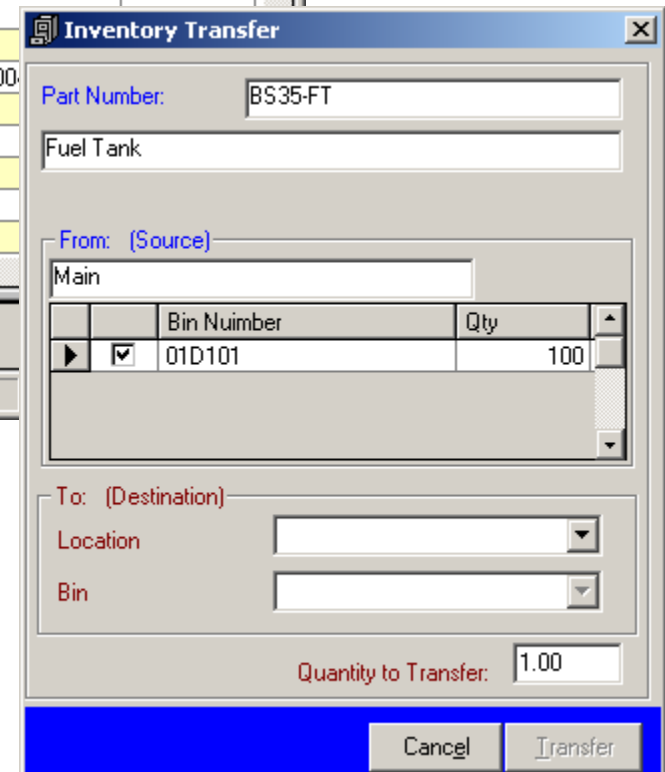
- Locations
- Bins

Provides a complete list of items by location on one screen.

Tracks the Transfer inventory between bins and locations.

Inventory Transfer:

Tracks the transfer inventory to locations and bins. All movements are recorded in the movement log.



Bin Number	Qty
01D101	100

Control Center: Movement Log

File Edit View Records Shop Floor Data Collection Tools Operations Add-Ins Help Debug

Current

Receiving

Inventory

Inventory Management

Kits

Bin Contents

Movement Log

Assembly

History

Administration

List Search Quick Pick Advan

Inventory Transfers

- 01A351 (1)
- 01A352 (3)
- 01A353 (1)
- 01A354 (1)
- 72-001A (1)
- 73-001CRK (2)
- CC-23 (1)
- CDW (6)
- DCWH (3)
- DE-400-034 (1)
- IGIW-01 (1)
- PCCON (3)
- PPP3 (1)
- Receiving (16)
- SEC (6)
- WV-32 (1)

TransKey	InventoryID	Source	SourceBin
209	BS35-CRNK	Main	73-001CRK
208	BS35-CRNK	Main	73-001CRK
207	BS35BLK	Main	72-001A
206	BS35-PST	Main	DE-400-034
205	BS35-VAL	Main	01A351
204	C500-004312	Receiving	Receiving
203	BS-Pnts-77-SC	Receiving	Receiving
202	BSLW-0923	Receiving	Receiving
201	BS800MAG	Receiving	Receiving
200	BS35-PCWL	Receiving	Receiving
199	BS35-FT	Receiving	Receiving
198	BSLW-0923	Vendor	SEC
197	C500-004312	Vendor	SEC
196	BS-Pnts-77-SC	Vendor	SEC
195	BS800MAG	Vendor	SEC
194	BS35-FT	Vendor	SEC
193	BS35-PCWL	Vendor	SEC
192	BS35-PST	Receiving	Receiving
191	BS35-PST	Vendor	PPP3
190	BS35-VAL	Receiving	Receiving
189	BS35-VAL	Vendor	WV-32
188	BS35-CRNK	Receiving	Receiving

0 of 48 JKramer Production Data

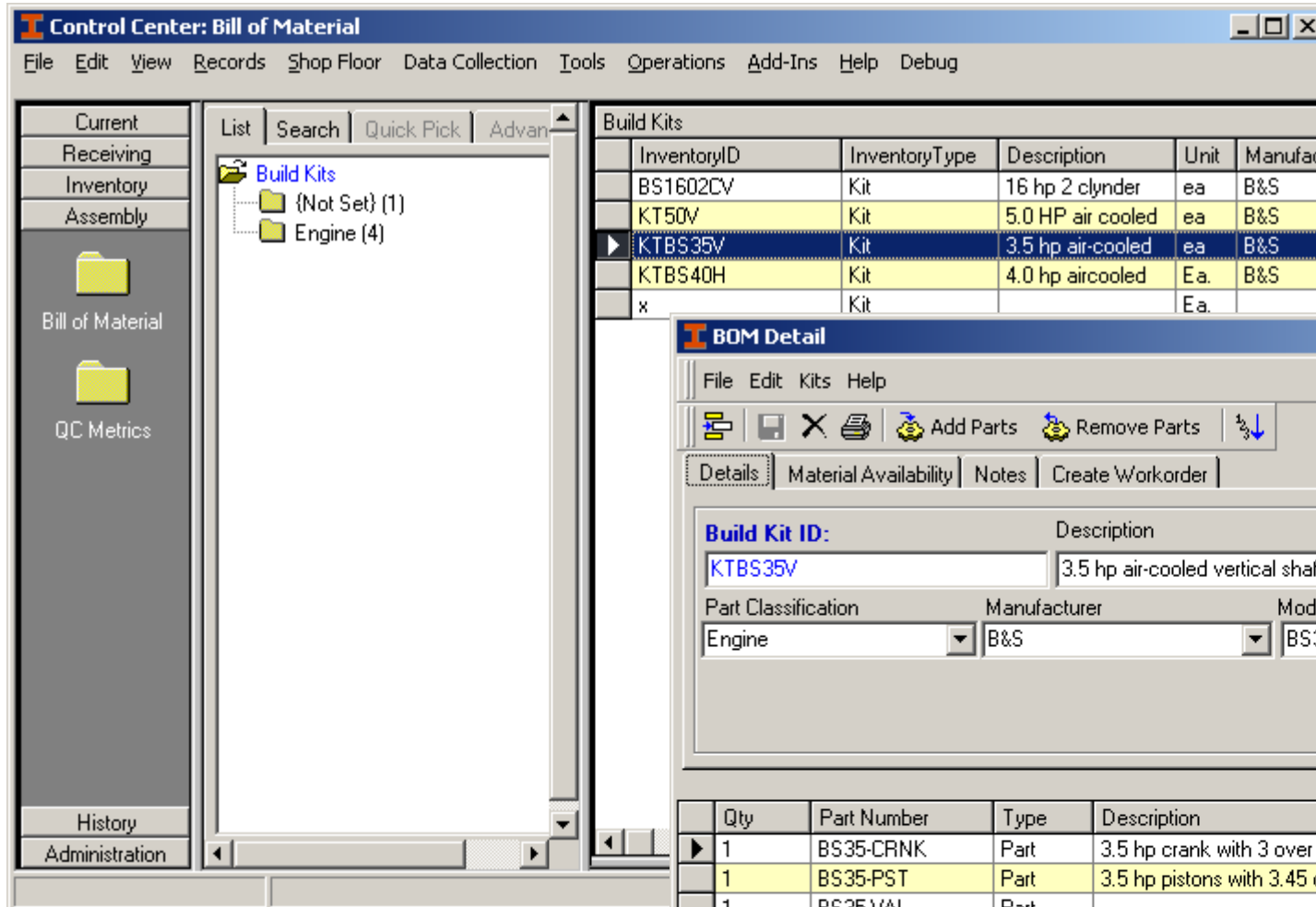
Movement Log:

See all your movement and activity in one place.

View By:

- Source
- Source Bin
- Destination
- Destination Bin
- Date
- Part Number

BOM/Workflow
Build a production kit with work cell and completion steps assignments.



Qty	Part Number	Type	Description	Work Cell	Work Step
1	BS35-CRNK	Part	3.5 hp crank with 3 over 5 ratio groove pi	EC1	1
1	BS35-PST	Part	3.5 hp pistons with 3.45 over ratio groove	EC1	2
1	BS35-VAL	Part		EC1	3
1	BS35BLK	Part		EC1	4
1	BS35-PCwL	Part	Pull start cowl	IGC1	5
1	BS800MAG	Part	8 inch magnito with fin coolers	IGC1	6
1	BSLW-0923	Part	B&S spark plug lead wire	IGC1	7
1	BS-Pnts-77-SC	Part	B&S points for single cylinder engine	IGC1	8
1	BS35-FT	Part	Fuel Tank	QC1	9
1	C500-004312	Part	spark plug	QC1	10
1	BS35QC	Labor		QC1	11

- Define your own work cells
- Define your own workflow steps
- Create an end product part number for finished goods inventory
- Assign QC metrics

Name	InventoryID	WorkCell	Description
DD500	T5600-043	QC4	a new dd500 te
FET-35	BS35QC	QC1	Final Engine Te
H500-0432	BS678-JH	QC1	some new test
D4500-094	BS40H	QC3	a new metrics to

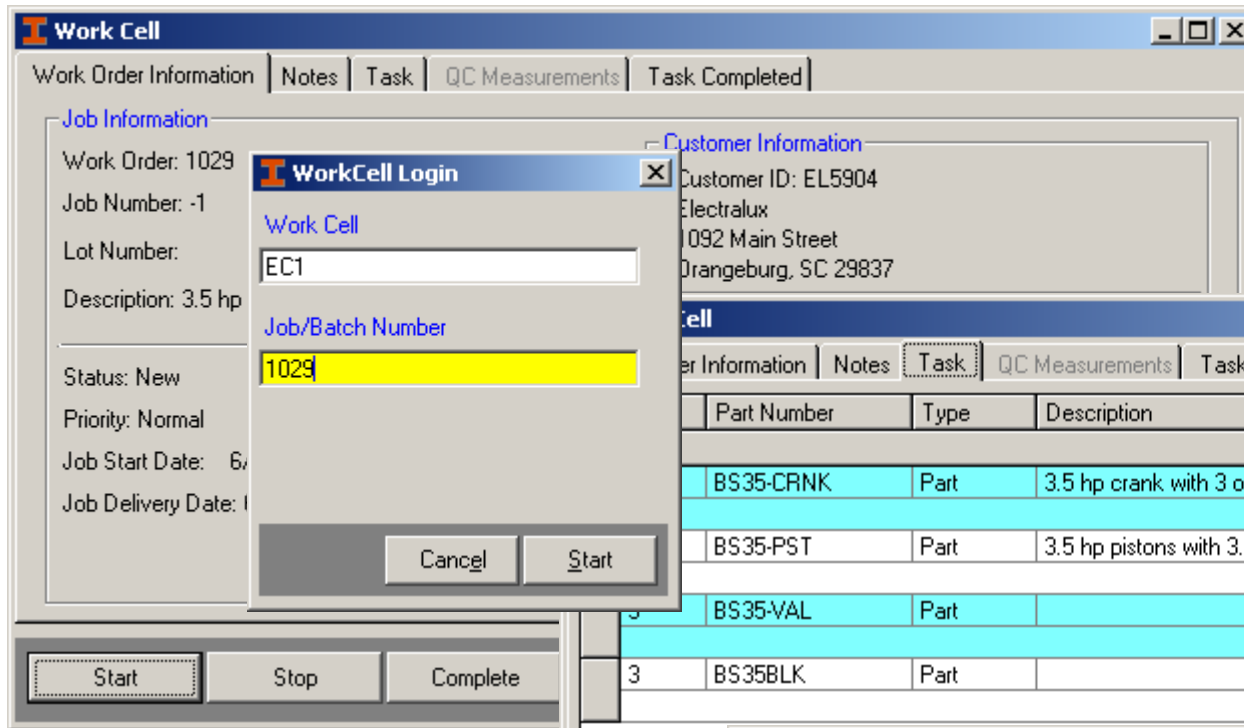
Active	Name	Description	Type	Lower Bound	Upper Bound
<input checked="" type="checkbox"/>	EStart	Did the engine start up?	Yes/No	0	0
<input checked="" type="checkbox"/>	PullCount	How many pulls to start unit	Numbers	0	0
<input checked="" type="checkbox"/>	RPM-ST				
<input checked="" type="checkbox"/>	SPG				

QC Metrics definitions

Define your own QC metrics to be captured during the workflow process.

Assign a metric to a work cell and part number.

- Ask real world metrics questions
- Collect lower bound and upper bound results
- Yes/No checkbox.
- Accessible Results table
- Define your own metrics collection variables



Work Cell

Work Order Information | Notes | Task | QC Measurements | Task Completed

Job Information

Work Order: 1029
 Job Number: -1
 Lot Number:
 Description: 3.5 hp

Status: New
 Priority: Normal
 Job Start Date: 6/
 Job Delivery Date: 1

WorkCell Login

Work Cell

Job/Batch Number

1029

Customer Information

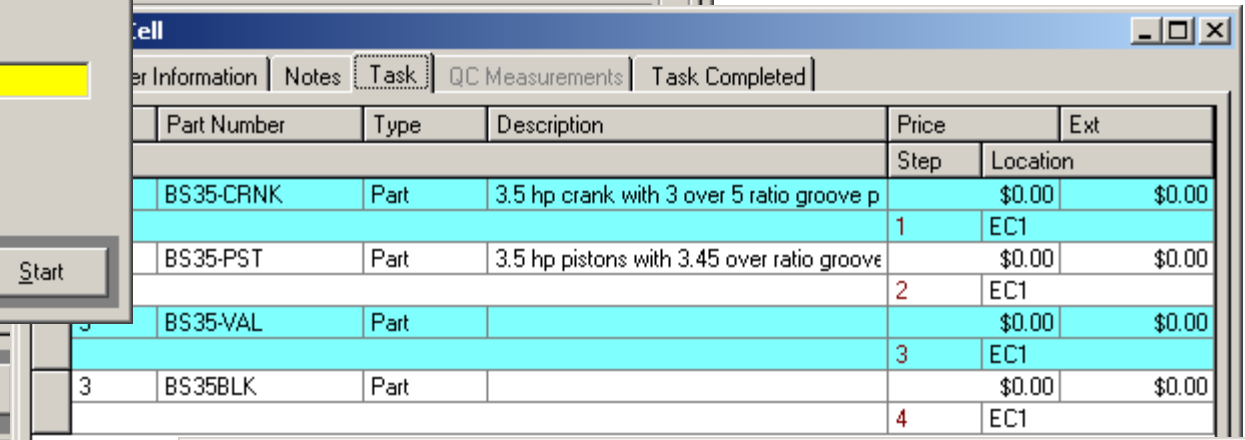
Customer ID: EL5904
 Electralux
 1092 Main Street
 Orangeburg, SC 29837

Start Stop Complete

Work Cell

Display work order information and customer information.

- Job status
- Job priority
- Job start and delivery dates.



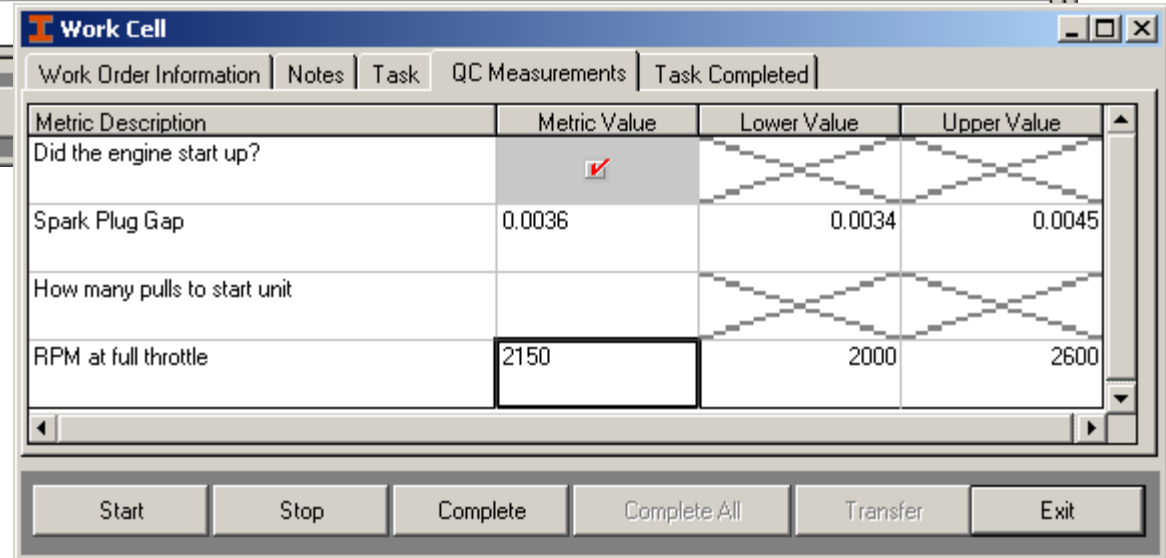
Work Cell

Work Order Information | Notes | Task | QC Measurements | Task Completed

Part Number	Type	Description	Price		Ext
			Step	Location	
BS35-CRNK	Part	3.5 hp crank with 3 over 5 ratio groove p	1	EC1	\$0.00
BS35-PST	Part	3.5 hp pistons with 3.45 over ratio groove	2	EC1	\$0.00
BS35-VAL	Part		3	EC1	\$0.00
3 BS35BLK	Part		4	EC1	\$0.00

Start

- Logon to work cell with Batch number
- Job must be transferred to work cell before work can be started
- Must complete all task before moving to next work cell
- Show users task list to completed for the work cell job assignments
- Capture QC metrics if assigned to this work order and work cell.
- View all completed task to determine production status.



Work Cell

Work Order Information | Notes | Task | QC Measurements | Task Completed

Metric Description	Metric Value	Lower Value	Upper Value
Did the engine start up?	<input checked="" type="checkbox"/>		
Spark Plug Gap	0.0036	0.0034	0.0045
How many pulls to start unit			
RPM at full throttle	2150	2000	2600

Start Stop Complete Complete All Transfer Exit

Control Center: Receiving Shipments

File Edit View Records Shop Floor Data Collection Tools Operations Add-Ins Help Debug

Current Receiving

Receiving Shipments

Parts Checked In

RMA's

Shipments Received

Inventory

Assembly

History

Administration

List Search Quick Pick Advan

Receiving Shipments

Name	AccountNumber	ShipmentNo	PO	POTrack
PC Connection		46	0	1990872

GroupSouth

File Edit Tool Operations Help

Print Reports Print Labels ?

1 Shipment Information 3 Details 4 Notes 5 Options

Shipment Information

Received From: PC Connection Shipment Number: 46

PO Number: Date Received: 6/6/2001 3:39:52 P

Vendor's Order No: 923794832

Vendor's Invoice No:

Tracking / Bill of Lading:

Receive Details

Vendor Part No	System Part No	Description	Print	Qty	Cost	Refer
114158	4050TN	HP LaserJet 4050 Series	<input type="checkbox"/>	10	0	

Receive Shipments:

View by:

- Vendor
- Purchase Order
- Date Received
- Shipping Company

- Print shipment reports
- Print item labels
- Receive Vendor Part number against your part number
- Receive serial and lot numbers during receiving process.

- ### Inventory Detail
- Serialized inventory
 - Custom price plans
 - Part classification
 - Grouping capability
 - Parts history usage
 - Kit inclusion
 - Vendor Part Reference cataloging

Inventory Details

File Edit Tool Help

Part Number: BS35-CRNK Type: Part Date Entered: 6/13/2001 Most Recent Recvd: 6/13/2001
 Description: 3.5 hp crank with 3 over 5 ratio groove punch Manufacturer: HES Model Number: Y78743
 Cost: 0.00 Alternate Price: 0.00 Part Classification: Cranks Group:
 Price: 0.00 Unit: Ea. MSRP: 0.00 Shipping Weight:
 Location: Main
 Units in this location:

Bin Number	Qty
73-001CRK	2
*	

Vendor Part Number Catalog

Part Information
 Part Number: BS35-CRNK
 Description: 3.5 hp crank with 3 over 5 ratio groove punch
 Part Class: Cranks Group: Internal

Vendor's Part Information
 Vendor:
 Part Number:
 Description:
 Add

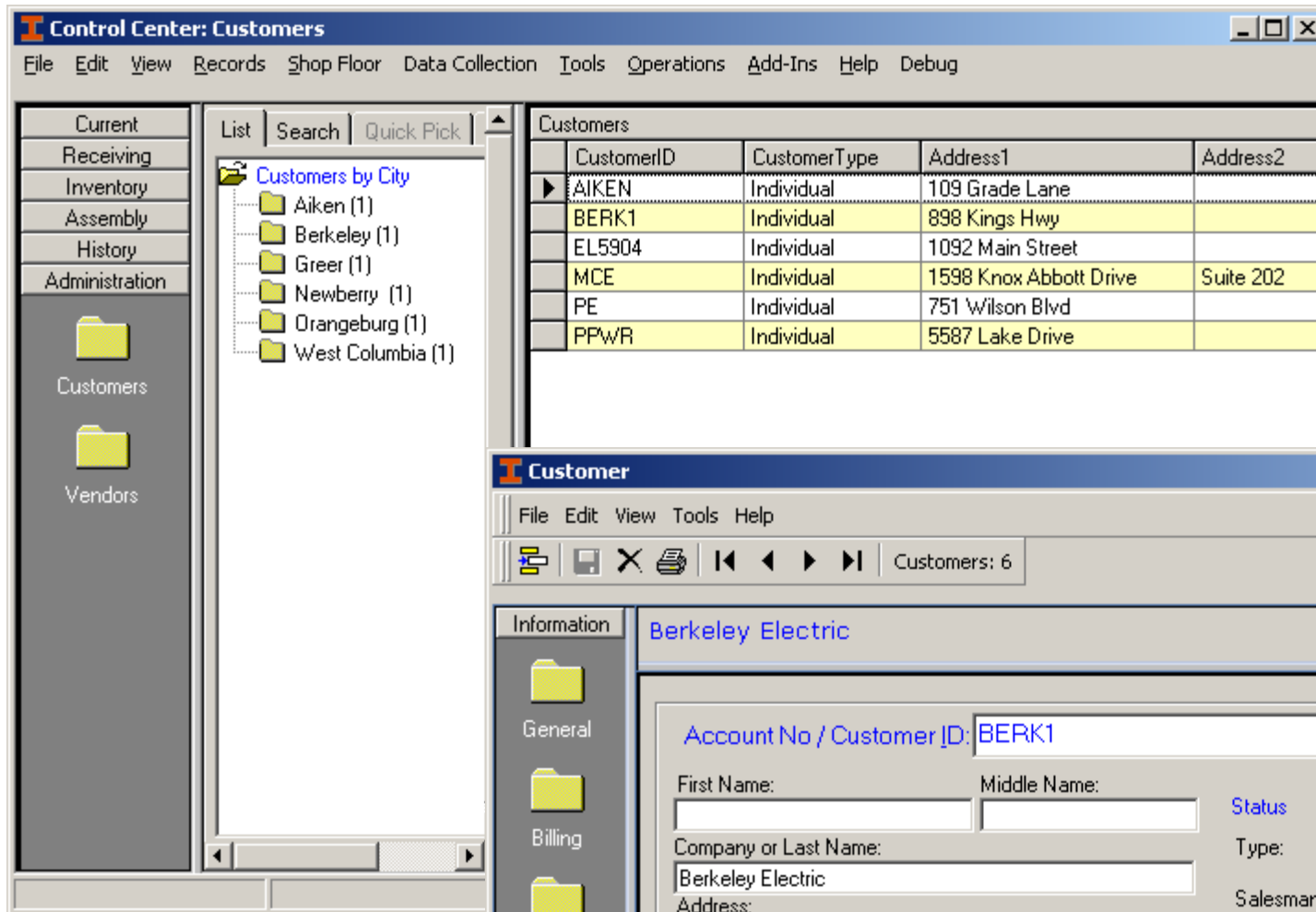
Vendor's Part No.	Description	Vendor
4014-35-01	3.5 hp crank with 3 over 5 ratio spin	Carolina Cranks

Included in Kits...

KitNumber	KitDesc	InventoryID	Qty
KTBS35V	3.5 hp air-cooled	BS35-CRNK	

Vendor Part Cataloging

Cross reference vendor part numbers to your part numbers.



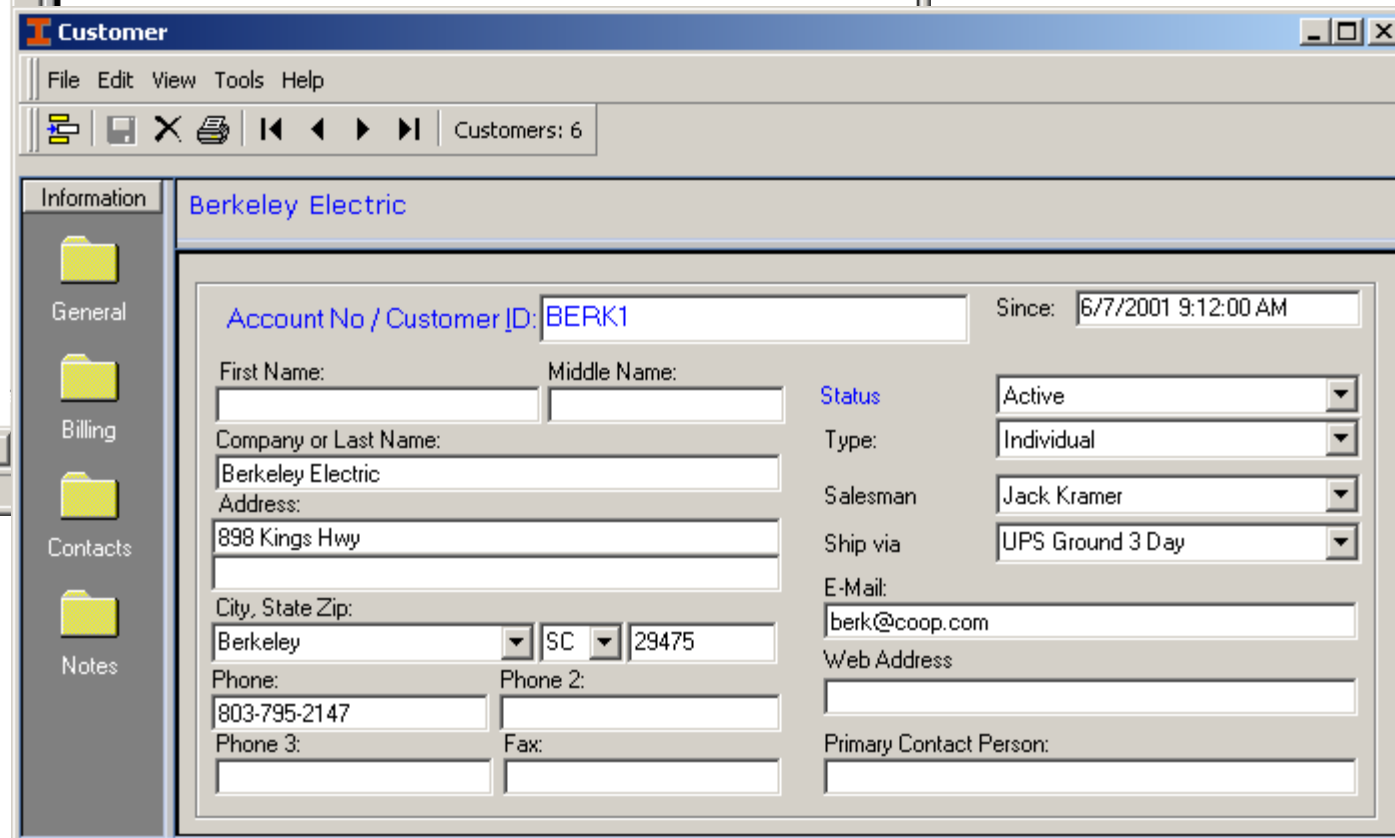
CustomerID	CustomerType	Address1	Address2
AIKEN	Individual	109 Grade Lane	
BERK1	Individual	898 Kings Hwy	
EL5904	Individual	1092 Main Street	
MCE	Individual	1598 Knox Abbott Drive	Suite 202
PE	Individual	751 Wilson Blvd	
PPWR	Individual	5587 Lake Drive	

Add/edit/delete and search for customer information

View data by

- City
- Postal code
- State
- Customer type
- Payment type

Also set status, account type, salesman, and preferred shipping method



Information Berkeley Electric

Account No / Customer ID: BERK1 Since: 6/7/2001 9:12:00 AM

First Name: Middle Name: Status: Active

Company or Last Name: Berkeley Electric Type: Individual

Address: 898 Kings Hwy Salesman: Jack Kramer

City, State Zip: Berkeley SC 29475 Ship via: UPS Ground 3 Day

Phone: 803-795-2147 E-Mail: berk@coop.com

Phone 2: Web Address:

Phone 3: Fax: Primary Contact Person:

Navigate through each customer with access to the General information as well as Billing. Add multiply contacts and notes for each customer.