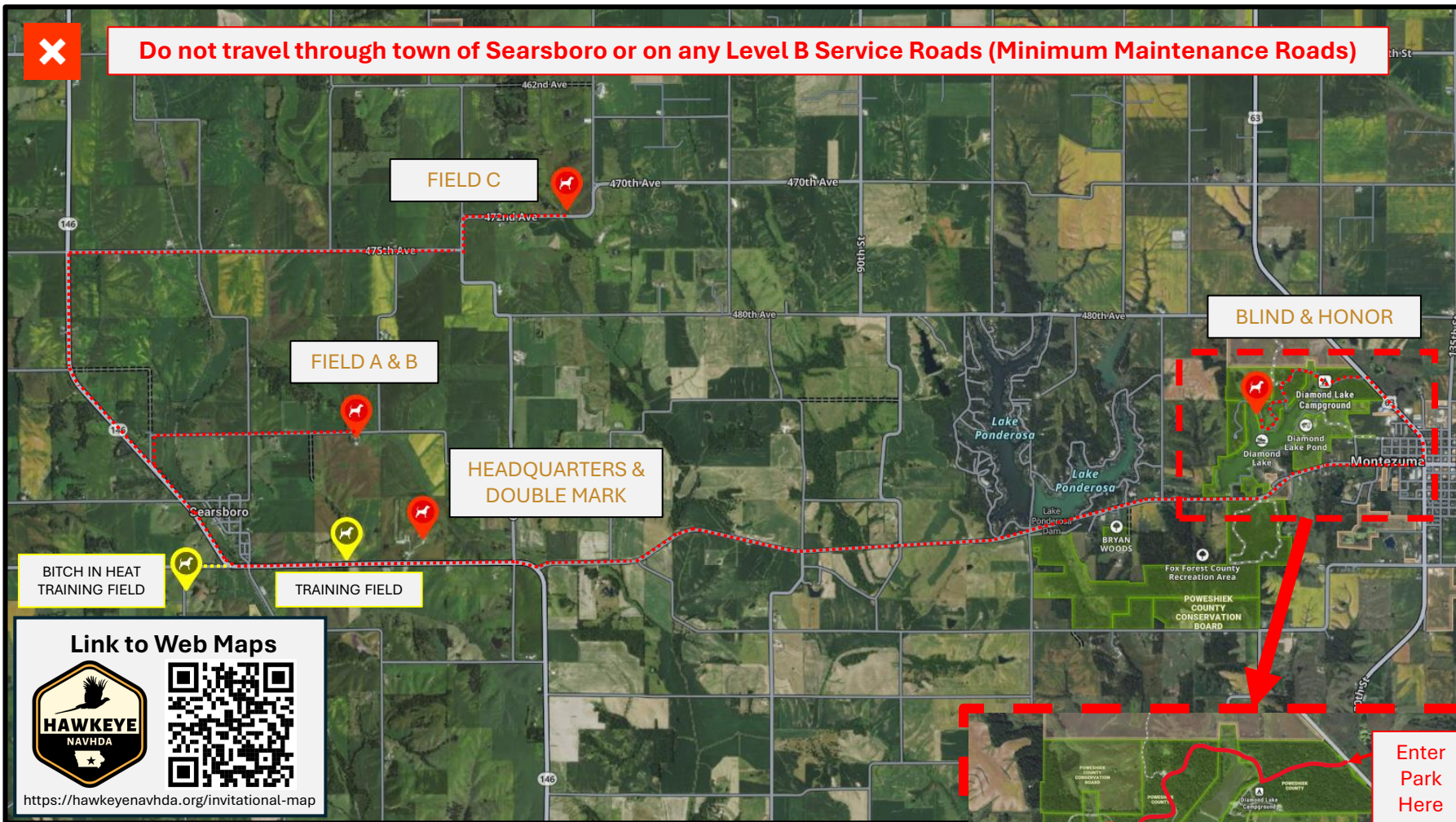




Do not travel through town of Searsboro or on any Level B Service Roads (Minimum Maintenance Roads)



Link to Web Maps



<https://hawkeyenavhda.org/invitational-map>



INVITATIONAL GROUNDS MAP

HEADQUARTERS & DOUBLE MARK

4945 Iowa Highway 146, Searsboro, Iowa 50242

FIELD A & B

476 485th Avenue, Searsboro, Iowa 50242

FIELD C

698 472nd Avenue, Grinnell, Iowa 50112

BLIND & HONOR

4896 Stage Coach Road, Montezuma, Iowa 50171



Enter Park Here



INVITATIONAL GROUNDS DIRECTIONS

HEADQUARTERS & DOUBLE MARK

Big Springs Shooting Complex: 4945 Iowa Highway 146, Searsboro, Iowa 50242

Main Complex (Opening & Closing Ceremonies, Double Mark, Food Truck, porta potties, etc.)

Directions from Grinnell – head south on Hwy 146 approximately 10.5 miles, entrance to Big Springs will be on your left (approx. 15 minutes travel time)

FIELD A & B

476 485th Avenue, Searsboro, Iowa 50242

From Main Complex, head west on Hwy 146 for 2.3 miles. Turn right onto 33rd street; in 0.2 miles turn right onto 485th Ave. Travel 1.6 miles and Fields A and B will be on the right. (Approx. 10 minutes travel time)

Do not travel through town of Searsboro or on any Level B Service Roads (Minimum Maintenance Roads)

FIELD C

698 472nd Avenue, Grinnell, Iowa 50112

From Main Complex, head west on Hwy 146 for 2.3 miles. Turn right onto 475th street; in 0.2 miles turn left onto 60th Ave, follow around corner onto 472nd Ave. Field will be on left.

BLIND & HONOR

Diamond Lake County Park: 4896 Stage Coach Road, Montezuma, Iowa 50171

From Main Complex, head east on Hwy 146. Travel 1 mile and turn slight left onto Diamond Trail Road. In 6.9 miles, turn left onto US Hwy 63N. Travel 0.8 miles and turn left into the entrance to Diamond Lake County Park (Stage Coach Rd). Travel 0.3 miles on Stage Coach Road and take a right at the first intersection (if you reach the campground, you have gone too far); continue approximately 1 mile to Diamond Lake County Park. (Approx. 15-20 minutes travel time)

Please do not go into Diamond Lake Park off of Diamond Trail Road you will have to go all the way through the park campgrounds and they have asked us not to do that.

Link to Web Maps



<https://hawkeyenavhda.org/invitational-map>

