


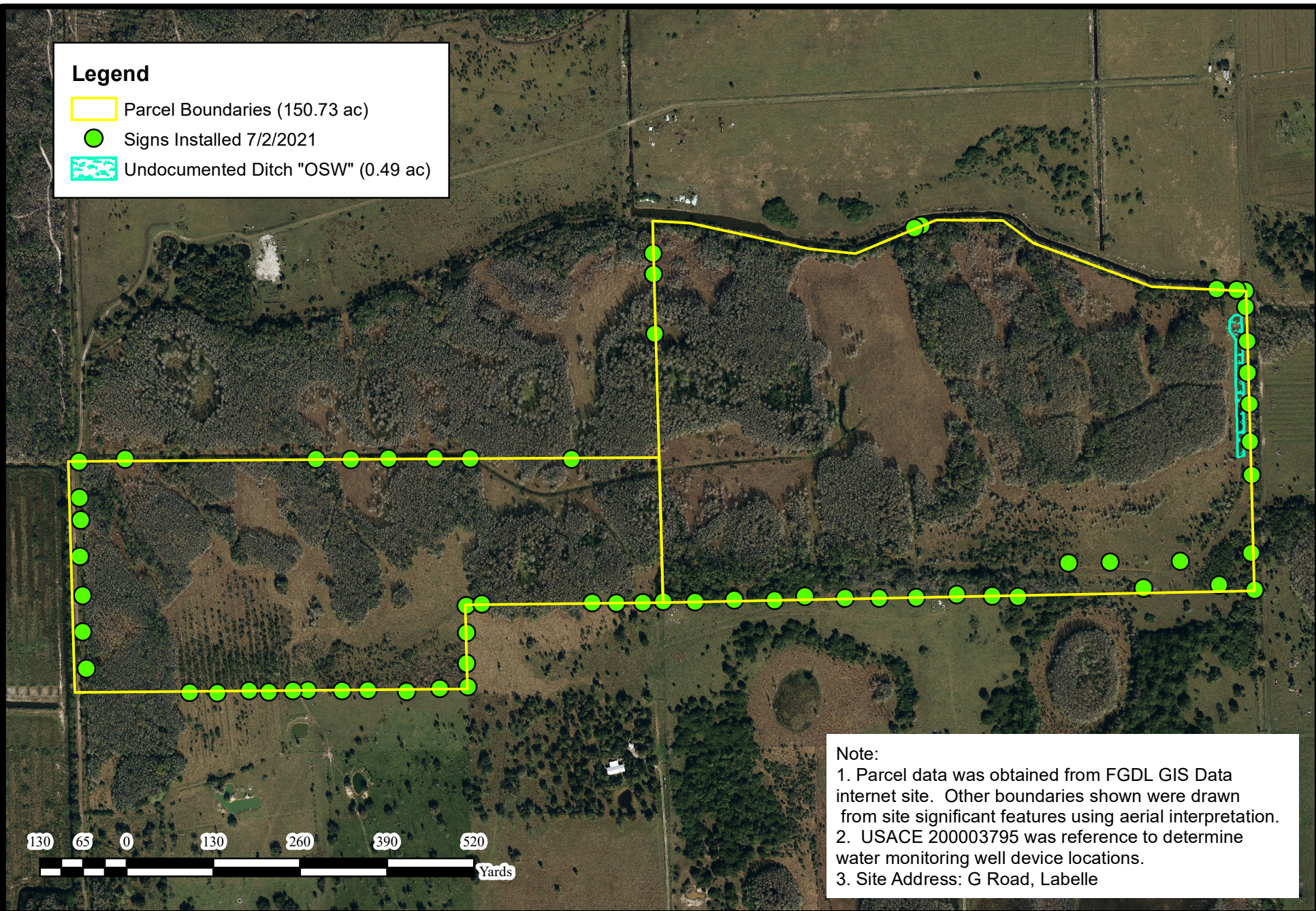


Legend

-  Parcel Boundaries (150.73 ac)
-  Signs Installed 7/2/2021
-  Undocumented Ditch "OSW" (0.49 ac)




Note:
 1. Parcel data was obtained from FGDL GIS Data internet site. Other boundaries shown were drawn from site significant features using aerial interpretation.
 2. USACE 200003795 was reference to determine water monitoring well device locations.
 3. Site Address: G Road, Labelle

Reflection Lakes at Naples Assoc.
 14020 Mirror Drive
 Naples, FL 34114



Natives of Corkscrew
 13321 Peace Road
 Buckingham, FL 33905
 P: 239-206-7441
 E: Contactus@corkscrewnatives.com




 SHEET NO.
 X

Hendry County
 Offsite Panther Mitigation Aerial Map
 DATE
 5/15/2024

PROJECT NO.
 N/A

SCALE
 AS SHOWN