



DOUBET RANCH

ANNUAL BULL SALE

04.02.2024

BILLINGS, MT



Dear Cattlemen,

Welcome to our Annual Bull Sale. We are pleased to provide you with an outstanding set of bulls that will contribute to the Profitability of your ranch. As many of you know, we relocated our headquarters to Ranchester, Wyoming, just a short trip down the road from where we have been located for over 40 years previously in the Salers business.

We are excited to continue our Commitment to Excellence as we move forward. We believe the “Customer Results” with our genetics demonstrate the terrific contribution they can make to the Beef Industry. After the historically tough winter of ’22-’23 that we experienced and after moving our cows to a new location, we still had a 96.2% breed up. You will see throughout the sale catalog as our customers share their successes with our genetics, breed ups in the 90%’s is attainable and comes to be expected. The phrase, “Keep your Mind Open, Not your Cows”, is one to consider. We get feedback from customers that are new to our program with comments like, “the bulls did a great job getting the cows bred – we’ve never seen results like this”; “We are amazed at the vigor of the calves we are getting”; “the bulls held up really well and didn’t melt away “; “I can’t get over how gentle the bulls you sent me are”; “your cows sure are deep-bodied and have great dispositions”; “you have one of the best, most complete sets of cows I have seen”; “the breed up on our cows has been fantastic”. We aim to help your operation see these same results.

We take great pride in the involvement of our family in this operation. We couldn’t get it all done without all of their help. We are always looking to learn better ways to do things and ways to become more profitable for ourselves and our customers. When one of the family sees an operation using new technology or a better way to do something or hears about it at a set of meetings they may be attending, we are all ears to learn about it and see if it may fit into our operation. We can’t thank them enough.

We’ve never been more excited and optimistic about the cattle business and our program. 2024 cattle prices are set to eclipse the record prices of 2015. If you can enjoy the unprecedented fertility, tremendous calf vigor and unsurpassed longevity of the Salers and Optimizer cattle that we enjoy, you will be well positioned to sell more pounds of live calf and capitalize on the record markets headed our way. We wish to thank all of our past buyers for their continued support, all of our new buyers for the chance to make an impact in their cow herd, and all of those people who provide services to our ranching enterprise in the day to day operation. We truly appreciate it. If you have any questions about the bulls in the catalog, have questions about the cow herd or just want to ‘talk cows’, don’t hesitate to give us a call or stop by.

Thanks so much

- The Donbets



Doubet Ranch
SALE SCHEDULE

MONDAY APRIL 1ST

2 PM - Bulls will be available for viewing
Billings Livestock Commission

TUESDAY APRIL 2ND

10 AM - Bulls will be available for viewing

Noon - Lunch

1 PM - Sale Begins

JIM & SHERRY DOUBET • (303) 638-2625 • JTDOUBET@GMAIL.COM • DOUBETRANCH.COM



Doubet Ranch ANNUAL BULL SALE

OFFERING A SELECT GROUP OF 70 OPTIMIZER BULLS, 5 SIMANGUS BULLS + 6 ELITE OPTIMIZER HEIFERS

SALE DAY PHONES

Jim Doubet (303) 638-2625
Curtis Doubet (303) 681-7086
Cody Doubet (720) 346-8894
Justin Doubet (720) 320-3291

SALE LOCATION

Billings Livestock Commission
2443 N Frontage Rd
Billings, MT 59101
(406) 245-4151

AUCTIONEER

Ty Thompson (406) 698-4783

SALE REPRESENTATIVES

John Goggins – Western Ag Reporter (406) 698-4159
Devin Murnin – Western Livestock Journal (406) 696-1502
Dean Pike – American Salers Association (303) 810-7605

ACCOMMODATIONS

Holiday Inn Express
430 Cole St, Lockwood, MT 59101
(406) 259-8600

VIDEOS

Videos of the bulls can be found at DOUBETRANCH.COM

ONLINE BIDDING

Sale will be hosted online with DVAuction.com See page 7 for further assistance.

DVAuction
Broadcasting Real-Time Auctions

DELIVERY

We do our best to deliver the bulls direct to your bull pen gate as part of the purchase price. In the event that delivery is greater than 1000 miles, we will work with you to keep this cost to a minimum.

VOLUME DISCOUNTS

Volume Discounts are available on purchases of 5 bulls or more.

HEALTH

All bulls have been vaccinated with Merck Animal Health products. They were given Nasalgen 3 PMH, Cavalry 9, Vista Once/Vision 7 Somnus and Safe-guard dewormer. They will have passed a semen test prior to delivery to your ranch and have been BVD PI tested negative. All bulls will receive health papers for interstate shipment as needed.

GUARANTEE

All bulls sell with a first breeding season guarantee. It is rare that there are problems, but in the case there is an issue, a suitable substitute bull or credit towards next year's purchase will be worked out with the buyer.

SIGHT UN-SEEN

If you are interested in buying bulls but can't make it to the sale, you can buy with our Sight Unseen Guarantee. Give Jim a call or contact Curtis (303) 681-7086, Cody (720-346-8894, Justin (720) 320-3291 or Dan (406) 799-5200, and we'll be glad to get the bulls that meet your needs. We have had customers buy from 1-30 bulls on order with us and have customers for over 10 years that have never been in the bull pen. We'll guarantee you'll like the bulls when they get to your place or we'll take them back.



EPD EXPLANATIONS

Calving Ease Direct (CED), is expressed as a difference in percentage of unassisted births, with a higher value indicating greater calving ease in first-calf heifers. It predicts the average difference in ease with which a sire's calves will be born when he is bred to first-calf heifers.

Birth Weight EPD (BW), expressed in pounds, is a predictor of a sire's ability to transmit birth weight to his progeny compared to that of other sires.

Weaning Weight EPD (WW), expressed in pounds, is a predictor of a sire's ability to transmit weaning growth to his progeny compared to that of other sires.

Yearling Weight EPD (YW), expressed in pounds, is a predictor of a sire's ability to transmit yearling growth to his progeny compared to that of other sires.

Maternal Milk EPD (Milk), is a predictor of a sire's genetic merit for milk and mothering ability as expressed in his daughters compared to daughters of other sires. In other words, it is that part of a calf's weaning weight attributed to milk and mothering ability.

Stayability (STAY), Predicts the probability of a bull's daughters remaining productive until at least six years of age.

Marbling EPD (Marb), expressed as a fraction of the difference in USDA marbling score of a sire's progeny compared to progeny of other sires.

Ribeye Area EPD (RE), expressed in square inches, is a predictor of the difference in ribeye area of a sire's progeny compared to progeny of other sires.

2023 Non Parent EPD Averages	CED	BW	WW	YW	M	STAY	MARB	REA
	+12.1	+0.1	+57	+80	+16	+15	-0.1	+0.68



The ASA Gold Sire and Dam program recognizes Salers breeders' top producing cows within a herd based on number of calves weaned per cow exposed and weaning weight of calves. Cows and sires can be recognized from any environment because the list is based on within herd performance.

- Gold Dams must have had a calf before they are 2.3 years of age and calve within a 395 day calving interval which allows the producers to calve heifers earlier than the main cow herd.
- Dam's must have a minimum of three natural (non-ET) calves with an average weaning ratio greater than 105.
- These are the top quality most efficient cows in a herd. Only 2% of the registered cows make the Golden Dam list.

Gold Sires - Salers bulls can earn the title of Gold Sires by siring five or more Gold Dams.

Gold dams and Sires can be identified in Salers pedigrees by an (*) behind each name in the pedigree.

Welcome to the Doubet family bull sale. What a stout set of thick, sound, great dispositioned Salers Optimizer bulls they are offering.

Without a doubt, having purchased thousands of Optimizer feeders for years, it's very common for the same feeder to purchase each set year after year. It's easy to say the Doubet's program is easy for us to endorse. They have a quality proven track record. The genetics being offered in their sale will produce feeders that are easy to merchandise and appreciated by everyone that feeds them.

We rely on a consistent quality product year after year, and that's what this instrumental program offers to the rancher and down the road to the feeding sector. We are the commercial marketing arm for the Doubet program. Our purpose is to provide market support for those utilizing this quality set of bulls. Markets continue to change, and the Doubet bulls continue to set the bar high for ranchers that enjoy what Salers Optimizer bulls offer.

If you're new to this program, just walk the bull pens sale day and I'm sure you will find a set of bulls that have profitability bred in from the first pen to the very end. If you need assistance in scoring the bulls, or buying assistance, give me a call and take advantage of our guaranteed sight unseen purchase program. See you at the Doubet Sale, April 2nd.



**DEICHMANN
LIVESTOCK
BROKERAGE**

406-423-5500 • 406-799-5200
P.O. Box 310 • Hobson, MT 59452

Sincerely,
Dan Deichmann

DVAuction
Broadcasting Real-Time Auctions

Never Miss An Auction Again!
Watch & Bid online for FREE!

**Visit www.DVAuction.com
and Register Today!**

For General Questions Please Contact Our Office:
(402) 316-5460 or support@dvauction.com

The Enduro Sons



Reference
Sire



MAC F1 ENDURO 43E

TATTOO: 43E SA#: 720903 DOB: 2/4/17

1/2 SA 1/2 AN
BLACK
POLLED

CONNEALY CONSENSUS 7229
CONNEALY COMRADE 1385
HAPPY GEE OF CONANGA 919

*S NEBRASKA 330N
MAC CARINA 176C
MAC WILLOW 134W

CONNEALY CONSENSUS
BLUE LILLY OF CONANGA 16
G A R NEW DESIGN 5050
HAP GINA OF CONANGA 260 4965
D LIMITED EDITION 179L
*S BLACK LADY 50K
*MAC LENNOX 314L
MAC KESIA 322K

GED	BW	WW	YW	M	STAY	MARB	REA
+10.9	+0	+67	+103	+22	+17	+0.4	+36

Here is a top Optimizer sire that will leave you with beautiful females with wonderful udders. Our biggest sire group with some tremendous bulls in this year's sale. Enduro puts lots of length of body, rib, volume in his progeny. You'll appreciate their good dispositions, structure and good feet. Owned with Parke Ranch and MacDonald Ranches.





1



DR ENDURO 59L

TATTOO: 59L SA#: 756393 DOB: 3/11/23

CONNELY COMRADE 1385

MAC F1 ENDURO 43E

MAC CARINA 176C

1/2 SA 1/2 AN
HOMOZYGOUS BLACK
HOMOZYGOUS POLLED

MJB GLADIATOR 305B

***MJB EMPRESS 121F**

MJB MS PRISTINE 103W

CONNELY CONSENSUS 7229
HAPPY GEE OF CONANGA 919

*S NEBRASKA 330N
MAC WILLOW 134W

SRS SPARTACUS 0670Z
*MJB BARBIE 126Z

OPP FRONTIER 771T
*MISS VERM DATELINE 19N



LOT 1

BW: 96		ADJ WW: 802		DAM PROD: 4/110			
GED	BW	WW	YW	M	STAY	MARB	REA
+8	+3.2	+80	+135	+25	+12	+0.2	+0.98

59L is without question one of the best we have ever offered and no one has left the bull pen without this one at the top of their list! The substance and power this Enduro son brings to the table is absolutely incredible. His rib cage is so massive, and his pin set and stifle dimension is extremely powerful. But what elevates him to a true herd bull prospect is how he packs that much punch into a package that is still so correctly designed and well put together. His shoulder lays smoothly, his angles are fantastic, and his athleticism at the ground is awesome. He fits all facets of the production cycle and has unlimited upside potential! **Mother Is A Gold Dam.**





LOT 2

Catie Doubet

It's as close to a guarantee as it gets in our cowherd that no matter what 156D lays down and produces, it'll be high quality. Year after year she has made high sellers in the bull pen that have gone out and made a big time impact. 23L is no exception. He has been a crowd favorite of many and for good reason. He is unmatched in the entire sale from a stoutness and power standpoint. His angles are awesome, and his athleticism is exciting. You want one to make a set of feeder cattle that gets them fired up?! Here he is!

2



DR ENDURO 23L

TATTOO: 23L SA#: 756359 DOB: 3/2/23

3/4 SA 1/4 AN
BLACK
POLLED

MAC F1 ENDURO 43E

MAC CARINA 176C

KEYS ROCKSTAR 95X

MOB MS ROCKSTAR 156D

MOB MS PRISTINE 145Z

CONNEALY CONSENSUS 7229
HAPPY GEE OF CONANGA 919

*S NEBRASKA 330N
MAC WILLOW 134W

NJF TOP LEVEL 41T
MISS KEY ESTELLE 10N

OPP FRONTIER 771T
*MOB MS DAWN 171W

BW: 92 ADJ WW: 730 DAM PROD: 6/104

GED	BW	WW	YW	M	STAY	MARB	REA
+10	+2.4	+66	+96	+23	+21	-0.1	+0.66

"Thought I would share this with you after talking to the feed yard on last year's heifers. They were super happy with how the heifers did. Went right to eating after they got there. The health was good. Real happy with the gain. Ended up going 100% Choice or better and 75% CAB. They got some big time premiums on them. He wants them again this fall. I'm glad to finally be able to hear back on how they did in the feed yard so we can confirm if we are going in the right direction." - Joe Thomas, Turnell Cattle Company, WY

3



DR ENDURO 20L

TATTOO: 20L SA#: 756356 DOB: 4/9/23

5/8 SA 3/8 AN
HOMOZYGOUS BLACK
HOMOZYGOUS POLLED

MAC F1 ENDURO 43E

CONNEALY COMRADE 1385

MAC CARINA 176C

MJB BARBWIRE 260S

MJB BARBIE 150Y

MISS W SIMBA 205L

CONNEALY CONSENSUS 7229
HAPPY GEE OF CONANGA 919

*S NEBRASKA 330N
MAC WILLOW 134W

W POWER BOSS 203P
MS W INDEPENDENCE 214L

SPRINGDALE SIMBA 5J
MISS W TOPAZ 202G

BW: 81 ADJ WW: 739 DAM PROD: 10/103

CED	BW	WW	YW	M	STAY	MARB	REA
+9	+0.3	+57	+86	+21	+13	+0.4	+0.72



Pound for pound this may be the best bull in the entire offering. Every once in a while, you get one that you know is good from the moment they hit the ground and 20L is just that. He is significantly younger than the average bull in the sale, but don't get caught up in that and miss one of the best we've ever made. We are retaining a half semen interest in this bull because we think so highly of him. His dam, 150Y, has withstood the test of time and is still cranking them out at 13 years of age! There is no guess work in what stands behind this herd bull prospect, he is as proven as anything that'll walk through the ring for us. He is ELITE!

4



DR ENDURO 1L

TATTOO: 1L SA#: 756463 DOB: 3/2/23

1/2 AN 1/2 SA
BLACK
POLLED

MAC F1 ENDURO 43E

CONNEALY COMRADE 1385

MAC CARINA 176C

MJB TOUCHDOWN 209A

MJB CHEERS 163C

MISS W VERM DATELINE 47M

CONNEALY CONSENSUS 7229
HAPPY GEE OF CONANGA 919

*S NEBRASKA 330N
MAC WILLOW 134W

GGT END RUN 240X
*MJB PRISTINE 106X

VERMILION DATELINE 7078
MISS W SALERFORD 101X

BW: 94 ADJ WW: 743 DAM PROD: 6/103

CED	BW	WW	YW	M	STAY	MARB	REA
+10	+2.7	+62	+91	+24	+19	+0.0	+0.40

1L has been a favorite of the ranch crew all summer and fall and for good reason. He has that big time herd bull look about him with the added masculinity, testicle size, and tightness of sheath to made a good bull great. His forerib shape is awesome and the way he transitions everything so smoothly and square from front to rear elevates his quality. He steps down on a big square foot that'll allow him to offer so much longevity. He's a sale highlight for sure!

5



DR ENDURO 18L

TATTOO: 18L SA#: 756354 DOB: 3/13/23

1/2 SA 1/2 AN
BLACK
HOMOZYGOUS POLLED

MAC F1 ENDURO 43E

CONNEALY COMRADE 1385

MAC CARINA 176C

*GGT P BK ENFORCER 300U

MJB TOPAZ 141E

LCC PRIDE K3073

CONNEALY CONSENSUS 7229
HAPPY GEE OF CONANGA 919

*S NEBRASKA 330N
MAC WILLOW 134W

GGT P BLK PREDATOR 223N
*GGT MS P ESTHER 154P

CONNEALY FRONTLINE 736
LEACHMAN PRIDE F3068

BW: 102 ADJ WW: 725 DAM PROD: 5/104

CED	BW	WW	YW	M	STAY	MARB	REA
+9	-0.1	+49	+71	+21	+17	+0.4	+0.31



18L is a very complete and high performing bull that is big testicled that has an abundance of rib and doability. He's a big centered bull with an awesome depth to his heart and a really good turn back to his flank. The bull has a nice, smooth muscle pattern with a lot of quality all the way through.





6



DR ENDURO 54L

TATTOO: 54L SA#: 756389 DOB: 4/2/23

3/4 SA 1/4 AN
BLACK
HOMOZYGOUS POLLED

MAC F1 ENDURO 43E

MAC CARINA 176C

TSB CHAPARRAL 93Z

MJB SPANISH LADY 169C

MJB MS DAWN 163Z

CONNEALY CONSENSUS 7229
HAPPY GEE OF CONANGA 919

*S NEBRASKA 330N
MAC WILLOW 134W

ASH BUG 7U
TSB CAROLINE 11W

SW THUNDER 9T
MJB MS BRILLIANT 130U

BW: 92 ADJ WW: 726 DAM PROD: 5/98

CED	BW	WW	YW	M	STAY	MARB	REA
+11	+0.6	+55	+74	+19	+19	+0.1	+0.46

Definite sale feature here and one for the good cowboys! Love this bull's skeletal build and structure integrity with added style and eye appeal up front. He's extra impressive in the aggressive shape he has right in behind his shoulder and how he powers back with that added muscle all the way to his pin set. Lots of quality here!



7



DR ENDURO 53L

TATTOO: 53L SA#: 756388 DOB: 3/24/23

5/8 SA 3/8 AN
HOMOZYGOUS BLACK
HOMOZYGOUS POLLED

MAC F1 ENDURO 43E

MAC CARINA 176C

GGT P BK EDELMAN 164D

MJB PANACHE 154F

MJB YELLOW ROSE 153B

CONNEALY CONSENSUS 7229
HAPPY GEE OF CONANGA 919

*S NEBRASKA 330N
MAC WILLOW 134W

GGT P BK PENDALTON 380A
*GGT MS FINALITY 87Y

*TSB TULSA 82W
MISS W VERM DATELINE 47M

BW: 103 ADJ WW: 785 DAM PROD: 3/103

CED	BW	WW	YW	M	STAY	MARB	REA
+8	+0.3	+59	+79	+20	+24	+0.2	+0.18

53L is one of the really good looking, high quality bulls of the sale that is awesome in his balances and lines out nice from the side. So much presence in how everything ties together, and we love how proportionate he his. As a bonus he maintains that quality on the go, being that sound structured and good in his angles. Here is one of the really good bulls in the sale!



8



DR ENDURO 27L

TATTOO: 27L SA#: 756363 DOB: 3/8/23

1/2 SA 1/2 AN
HOMOZYGOUS BLACK
HOMOZYGOUS POLLED

MAC F1 ENDURO 43E

MAC CARINA 176C

MAC F1 SAMURAI 70S

MJB MS SAMURAI 123Z

MJB MS SUPREMACY 00T

CONNEALY CONSENSUS 7229
HAPPY GEE OF CONANGA 919

*S NEBRASKA 330N
MAC WILLOW 134W

B C C BUSHWACKER 41-93
MAC BLK MADISON 306M

W POWER BOSS 203P
MISS W VERM DATELINE 39M

BW: 87 ADJ WW: 696 DAM PROD: 9/107

CED	BW	WW	YW	M	STAY	MARB	REA
+12	-0.2	+59	+87	+26	+15	+0.2	+0.60

27L is a smooth, correctly made bull whose shoulder lays flat and then transitions correctly into his forerib. He comes really strong and level down his top being set right in his tailhead and then goes correctly on the move.



9



DR ENDURO 48L

TATTOO: 48L SA#: 756262 DOB: 2/25/23

1/2 SA 1/2 AN
HOMOZYGOUS BLACK
HOMOZYGOUS POLLED

MAC F1 ENDURO 43E

MAC CARINA 176C

MAC QUARTERBACK 58Y

MJB MARY 134C

MJB YELLOW ROSE 138Z

CONNEALY CONSENSUS 7229
HAPPY GEE OF CONANGA 919

*S NEBRASKA 330N
MAC WILLOW 134W

MAC F1 SUNDANCE 4S
WJM WILMA 120W

*TSB TULSA 82W
MISS W MASTERPIECE 122H

BW: 90 ADJ WW: 599 DAM PROD: 5/98

CED	BW	WW	YW	M	STAY	MARB	REA
+9	-0.7	+55	+89	+18	+17	+0.4	+0.61

They don't come any more royally bred in our program than 48L. His mother, 134C, is a cornerstone in our cowherd and being Velocity's dam is just one of her many accolades. We knew this mating with Enduro would be all we wanted, and man did we get it right! If you want one with the body, fleshing ability, structure and maternal backing to produce awesome females here he is. If you want a bull that breeds a large group of cows and comes back in awesome breeding shape here, he is. His mother is getting a little age on her and there may not be many more opportunities to capitalize on one to build your herd around. Get in while it's hot!

10



DR ENDURO 25L

TATTOO: 25L SA#: 756361 DOB: 2/26/23

5/8 SA 3/8 AN
HOMOZYGOUS BLACK
HOMOZYGOUS POLLED

MAC F1 ENDURO 43E

MAC CARINA 176C

TSB MAVERICK 24C

*MJB SALLY 157E

MJB MISS FIRESTORM 156A

CONNEALY CONSENSUS 7229
HAPPY GEE OF CONANGA 919

*S NEBRASKA 330N
MAC WILLOW 134W

KEYS LONGSHOT 1Z
TSB HALIEY 3A

MJB SALUTE 263S
*MJB YELLOW ROSE 102Y

BW: 95 ADJ WW: 753 DAM PROD: 4/108

CED	BW	WW	YW	M	STAY	MARB	REA
+11	-0.5	+73	+110	+20	+14	+0.3	+0.46

25L is so smooth made from front to rear with a great shoulder angle and knee set. Here is one that is bold in his forerib and deep hearted with a lot of strength in his topline. Don't overlook the value of his added performance! **Mother Is A Gold Dam.**



The Patriot Sons



Reference
Sire



MJB PATRIOT 342H

TATTOO: MJB342H SA#: P737190 DOB: 3/9/20

CONNEALY COMRADE 1385

MAC F1 FREEDOM 150F

*MAC AZURE 81A

NJF BOULDER 46B

MJB DIAMOND 140F

MJB DAKOTA 152C

CONNEALY CONSENSUS 7229

HAPPY GEE OF CONANGA 919

MAC WYNDHAM 54W

MAC YAVANNAH 351Y

NJF TOP LEVEL 41T

NJF MISS MERCURY 292Z

MCD PERFORMER 116

*MJB MS CLASSIC 146T

5/8 SA 3/8 AN
BLACK
POLLED

A tremendous son of Freedom out of the 140F cow. We believe she is the prototype cow in the industry. Beautiful feminine design, abundant rib and volume, terrific feet and structure, udder quality, you name it, she has it. His maternal brother sells as Lot 19. He was the pick of Deichmann Livestock and is now owned with Parke Ranch. A true Cattleman's bull.

GED	BW	WW	YW	M	STAY	MARB	REA
+13.0	-0.6	+73	+112	+20	+14	+0.2	+45

"Just got the first couple calves on the ground. Got one of the best ones yet out of the bulls we bought from you last year." Jim and Terry Wilson, V Ranch, Wyoming. They also experienced a great breed up with 94.2% in the fall of 2023.



DOUBET RANCH



LOT 11

11



DR PATRIOT 317L

TATTOO: 317L SA#: 756894 DOB: 3/6/23

5/8 AN 3/8 SA
BLACK
HOMOZYGOUS POLLED

MJB PATRIOT 342H

MJB DIAMOND 140F

MJB VELOCITY 414E

DLB VEL DKE778 902G

E 778 ANGUS DAM

CONNEALY COMRADE 1385

*MAC AZURE 81A

NJF BOULDER 46B

MJB DAKOTA 152C

KEYS RETRIBUTION 18B

MJB MARY 134C

BW: 72

ADJ WW: 868

DAM PROD: 1/115

CED	BW	WW	YW	M	STAY	MARB	REA
+11	-1.4	+76	+117	+20	+16	+0.3	+0.30

317L is about as good as we can make them! His pedigree is stacked with Patriot on the top and Velocity on the bottom making him bred in the purple. Born at 72 pounds and weaning off at 868, he has done all the right things. Genetically he is incredible and visually we aren't sure what more you could ask for! His balance and eye appeal is lights out with a running gear that just elevates his quality. His rib cage and muscle pattern is ideal and we think the future is as bright on him as any in the sale! HERD BULL PROSPECT! **Retaining 1/2 interest and 1/2 possession.**





12



DR PATRIOT 313L

TATTOO: 313L SA#: 756889 DOB: 3/2/23

MAC F1 FREEDOM 150F
MJB PATRIOT 342H
 MJB DIAMOND 140F
 3/4 AN 1/4 SA
BLACK
HOMOZYGOUS POLLED

CONNEALY COMRADE 1385
 *MAC AZURE 81A
 NJF BOULDER 46B
 MJB DAKOTA 152C

E 778 ANGUS DAM

BW: 80		ADJ WW: 723		DAM PROD: 2/97			
CED	BW	WW	YW	M	STAY	MARB	REA
+13	-2.7	+62	+97	+20	+13	+0.3	+0.18

Heifer Bull. 313L is a quick find! He combines so many out there traits into one package in a way that doesn't usually make sense. His front end is so clean and stylish but make no mistake his power and shape is undeniable. So much expressive shape coming out of the back side of his shoulder set up by the fact his forerib is near perfect. He is extra-long bodied but doesn't give up any strength to his topline or depth of body. Extra-long hiped and square pinned with a beautiful 3/4 pattern. He is a sale feature and extremely high quality!



13



DR PATRIOT 322L

TATTOO: 322L SA#: 756900 DOB: 3/9/23

MAC F1 FREEDOM 150F
MJB PATRIOT 342H
 MJB DIAMOND 140F
 5/8 SA 3/8 AN
BLACK
HOMOZYGOUS POLLED

CONNEALY COMRADE 1385
 *MAC AZURE 81A
 NJF BOULDER 46B
 MJB DAKOTA 152C

MJB GLADIATOR 305B
DLB GLDR FLOWER 758E
 DLB NTRN SCARLETT 315A

SRS SPARTACUS 0670Z
 *MJB BARBIE 126Z
 DJD IRISH NEUTRON
 VGW RT-FLOWER 0732

BW: 86		ADJ WW: 814		DAM PROD: 1/108			
CED	BW	WW	YW	M	STAY	MARB	REA
+12	+0.9	+70	+105	+19	+17	+0.2	+0.47

This is an incredible individual from a stoutness and power perspective so has been on the shortlist many times. He has some much quality and structural integrity with that kind of balance and build yet he is as massive in his pin set and rib cage as any of the bulls in the sale. As an added bonus he is extra tight sheathed and big testicled. A definite sale standout!



14



DR PATRIOT 305L

TATTOO: 305L SA#: 756901 DOB: 2/28/23

MAC F1 FREEDOM 150F
MJB PATRIOT 342H
 MJB DIAMOND 140F
 5/8 SA 3/8 AN
BLACK
HOMOZYGOUS POLLED

CONNEALY COMRADE 1385
 *MAC AZURE 81A
 NJF BOULDER 46B
 MJB DAKOTA 152C

DLB 634L PREMIER 825U
DLB 825U ALLSPICE 34A
 DLB L634R SANPGIRL R634U

LCSK SNAP SHOT 24P
 DMD SPICE GIRL 634L
 LCSK SNAP SHOT 24P
 DMD SPICY GIRL L634R

BW: 84		ADJ WW: 723		DAM PROD: 1/96			
CED	BW	WW	YW	M	STAY	MARB	REA
+12	-0.7	+57	+86	+19	+12	+0.1	+0.47

This 305L bulls is just tremendous with that kind of natural performance, power and ruggedness. This is a bull with a big, big forearm and added stoutness of feature. Here is a bull with a lot of length and performance but he doesn't sacrifice anything in terms of doability. We like this 305L bull.

15



DR PATRIOT 339L

TATTOO: 339L SA#: 756891 DOB: 3/18/23

5/8 SA 3/8 AN
HOMOZYGOUS BLACK
POLLED

MAC F1 FREEDOM 150F
MJB PATRIOT 342H
MJB DIAMOND 140F

MJB GLADIATOR 305B
DLB GLADIATOR JASMINE 813F
DLB STAR JASMINE 510C

CONNELY COMRADE 1385
*MAC AZURE 81A
NJF BOULDER 46B
MJB DAKOTA 152C

SRS SPARTACUS 0670Z
*MJB BARBIE 126Z
RCM P BLK WEST STAR 291Z
DLB IRISH JASMINE 918A

BW: 82		ADJ WW: 800		DAM PROD: 2/103			
CED	BW	WW	YW	M	STAY	MARB	REA
+12	+0.7	+63	+91	+17	+12	-0.2	+0.73

339L is so massive and big behind his shoulder! This big stifled bull is so shapely everywhere and extra heavy boned with a masculine front. Combine that with a sound structural base and he's intriguing! Out of a beautiful Gladiator daughter.

16



DR PATRIOT 350L

TATTOO: 350L SA#: 756892 DOB: 3/23/23

1/2 SA 1/2 AN
BLACK
POLLED

MAC F1 FREEDOM 150F
MJB PATRIOT 342H
MJB DIAMOND 140F

3J REDWATER 14B
DLB 3J14B MIDNIGHT 963G
DLB SNAP MIDNITE C100U

CONNELY COMRADE 1385
*MAC AZURE 81A
NJF BOULDER 46B
MJB DAKOTA 152C

CONNELY COUNTDOWN
3J LADY
LCSK SNAP SHOT 24P
DMD MIDNIGHT 100C

BW: 77		ADJ WW: 783		DAM PROD: 2/103			
CED	BW	WW	YW	M	STAY	MARB	REA
+13	-0.1	+56	+91	+19	+14	-0.1	+0.35

Heifer Bull. Love the length, performance and structural quality here. He is extra good at the ground, being right in his angles and joints. We enjoy the added length and extension with a tight sheath and big testicle size.

17



DR GENERAL 16L

TATTOO: 16L SA#: 756342 DOB: 3/30/23

1/2 SA 1/2 AN
HOMOZYGOUS BLACK
HOMOZYGOUS POLLED

MAC F1 ENDURO 43E
MJB GENERAL 424G
MJB CLEOPATRA 107C

MJB TOP GUN 369F
MJB MELANIA 129H
MJB MS OVATION 121E

CONNELY COMRADE 1385
MAC CARINA 176C
SRS SPARTACUS 0670Z
MJB MS RESOLUTION 125A

TSB MAVERICK 24C
*MJB YELLOW ROSE 121Y
MJB ELWAY 322C
*MJB BARBIE 102X

BW: 72		ADJ WW: 663		DAM PROD: 2/108			
CED	BW	WW	YW	M	STAY	MARB	REA
+19	-3.4	+68	+107	+23	+13	+0.1	+0.33



Heifer Bull. High quality! 16L is so dense and correct in his rib and flesh with a look of doability and added longevity. He's ideal in his frame size with a masculine front end and dimensional muscle pattern. Yet his rib cage might be the most exciting part with a bold forerib and deep flank. From behind he is so square and wide but what is so intriguing is how he packs that kind of power into a clean jointed, super sound build. Herd bull prospect here!



The General Sons



Reference
Sire



MJB GENERAL 424G

TATTOO: 424G SA#: 732673 DOB: 5/11/19

1/2 SA 1/2 AN
BLACK
POLLED

CONNEALY COMRADE 1385
MAC F1 ENDURO 43E
MAC CARINA 176C
SRS SPARTACUS 0670Z
MJB CLEOPATRA 107C
MJB MS RESOLUTION 125A

CONNEALY CONSENSUS 7229
HAPPY GEE OF CONANGA 919
*S NEBRASKA 330N
MAC WILLOW 134W
SRS XTRA 0347X
SRS SEIKO 0670S
LEACHMAN RESOLUTION G228U
MJB LEXI 102L

CED	BW	WW	YW	M	STAY	MARB	REA
+19.4	-3	+61	+96	+22	+16	+0.3	+25

You'd love the power in this bull. Commercial producers across the country would love to have them like this. Length, power, big hip, tons of rib, big footed, moves like a cat and his dam is a maternal dream. Sired by Enduro with maternal and efficiency on the dam side you'd be hard pressed to match. In the Top 6% for BW, Top 2% for CED and CEM, Top 10% for Marbling and Top 25% YW and Milk.





LOT 18

18



DR GENERAL 17L

TATTOO: 17L SA#: 756351 DOB: 3/12/23

5/8 SA 3/8 AN
BLACK
POLLED

MAC F1 ENDURO 43E
MJB GENERAL 424G
MJB CLEOPATRA 107C

NJF BOULDER 46B
MJB DIAMOND 155D
MJB YELLOW ROSE 189A

CONNELLY COMRADE 1385
MAC CARINA 176C
SRS SPARTACUS 0670Z
MJB MS RESOLUTION 125A
NJF TOP LEVEL 41T
NJF MISS MERCURY 292Z
*TSB TULSA 82W
MJB SUNRISE 190T

If his picture and video doesn't do it for you I am not sure what will, he is one of those that speaks for himself! Backed by a tremendous cow family, 17L is exciting! His mother is a model of brood cow power and substance with a really nice udder. She is another one that consistently raises high selling bulls and herd building females. She is on our short list of cows to flush, we think a lot of her. Add in the General on the top side and this mating is one we can really get behind! Come find him sale day, you won't be disappointed!

BW: 93		ADJ WW: 711		DAM PROD: 6/103			
GED	BW	WW	YW	M	STAY	MARB	REA
+13	-1.0	+62	+87	+20	+15	+0.2	+0.59

MJB DIAMOND 155D





LOT 19

C. D. L.



DAM OF LOT 19



MATERNAL BROTHER
MJB PATRIOT 342H

19



DR GENERAL 75L

TATTOO: 75L SA#: 756407 DOB: 4/9/23

MAC F1 ENDURO 43E
MJB GENERAL 424G
 MJB CLEOPATRA 107C
 5/8 SA 3/8 AN
BLACK
HOMOZYGOUS POLLED
 NJF BOULDER 46B
MJB DIAMOND 140F
 MJB DAKOTA 152C

CONNELLY COMRADE 1385
 MAC CARINA 176C
 SRS SPARTACUS 0670Z
 MJB MS RESOLUTION 125A
 NJF TOP LEVEL 41T
 NJF MISS MERCURY 292Z
 MCD PERFORMER 116
 *MJB MS CLASSIC 146T

BW: 71		ADJ WW: 678		DAM PROD: 4/104			
CED	BW	WW	YW	M	STAY	MARB	REA
+19	-4.2	+59	+93	+19	+16	+0.2	+0.27

Heifer Bull. Maternal brother to Patriot! If you need added proof for the significance of that, study his sire group in this catalog. Cattle produced by 140F are the real deal. She is phenomenal and not a single visitor leaves the ranch not being pumped up about her. 75L himself is so square and opened up with a massive amount of rib and body. Take a look at his EPD profile and you'll notice he is a bulletproof heifer bull. We are absolutely jacked up about this one. He is an **ABSOLUTE SALE FEATURE. Retaining a semen interest for in herd use only.**



MJB Exchange 402K

20



DR GENERAL 77L

TATTOO: 77L SA#: 756408 DOB: 4/8/23

1/2 SA 1/2 AN
HOMOZYGOUS BLACK
HOMOZYGOUS POLLED

MJB GENERAL 424G

MAC F1 ENDURO 43E
MJB CLEOPATRA 107C

MCD SF ANSWER 71 - 3545
***MJB 3545 ANSWER 163G**

*MJB MS DAWN 171W

CONNELLY COMRADE 1385
MAC CARINA 176C
SRS SPARTACUS 0670Z
MJB MS RESOLUTION 125A

CONNELLY ANSWER 71
SF MISS 975
SW THUNDER 9T
MISS W BAR NONE 31J

BW: 71		ADJ WW: 765		DAM PROD: 3/109			
CED	BW	WW	YW	M	STAY	MARB	REA
+18	-2.6	+64	+103	+28	+20	+0.2	+0.51

Heifer Bull. Here is a high performing, good bodied bull with added fleshing ability and structural correctness. He takes a long stride and is extra stout from behind being big testicled. **Mother Is A Gold Dam.**

21



DR GENERAL 37L

TATTOO: 37L SA#: 756373 DOB: 3/17/23

1/2 SA 1/2 AN
BLACK
HOMOZYGOUS POLLED

MJB GENERAL 424G

MAC F1 ENDURO 43E
MJB CLEOPATRA 107C

MAC F1 SUNDANCE 4S
***MJB SUN GODDESS 122Y**

ZBR MS BLK TOPAZ 007W

CONNELLY COMRADE 1385
MAC CARINA 176C
SRS SPARTACUS 0670Z
MJB MS RESOLUTION 125A

RITO 112 OF 2536 RITO 616
MAC BLACK FLORA 6F
KFI RENEGADE
KIM MAC BLACKBIRD 1087

BW: 88		ADJ WW: 734		DAM PROD: 13/105			
CED	BW	WW	YW	M	STAY	MARB	REA
+15	-0.8	+62	+102	+22	+13	+0.3	+0.35

Cow power! Tracing back to arguably the single most influential Optimizer cow we own, 122Y, 37L is one everybody needs to study. We have flushed her many ways and have committed to building our cowherd around her. We have more than a handful of ET heifers in production because 122Y makes them good ordered, awesome built, and great numbered! Just look at 37L's production from birth to weaning and tell me you don't get excited about injecting that kind of performance into your cowherd! Nothing is guaranteed in this business, but 122Y making them good is the closest thing to that we can give you! **Mother Is A Gold Dam.**





Heifer Bull.

This one is for all the cowboys and cowgirls looking for an **elite purebred herd bull**. Each year we strive to make a purebred that is a true breed changer, and we feel that 4L is just that. His presence is unreal. So much look and quality in a powerful package and his structure is incredible. His top side traces back to the legendary 178C cow that we have been building around for years and his half-sisters are highlights in the replacement heifer portion of the sale. Several years ago, we bought the pick of the Figure 4

replacement heifers and his dam 366J was the result. With Gary and Gail's retirement, this is one of the very last chances to obtain genetics from some of the most passionate Salers breeders in the country. The cow herself is a model purebred with the look of quality the Salers breed is known for, and she knocked it out of the park with this bull as her first calf. She will be flushed as we charge forward and you will see her influence in our cowherd for many years. Whether you are trying to make your purebreds as high quality as possible or F1's that'll inspire your cowherd for many years, 4L is lights out. Do yourself a favor and just buy the bull.

Retaining half semen interest.

22



DR DERRINGER 4L

TATTOO: 4L SA#: 756384 DOB: 1/26/23

**PUREBRED
BLACK
HOMOZYGOUS POLLED**

NJF BOULDER 46B
MJB DERRINGER 311E
*MJB SPANISH LADY 178C
FFS GARMAN 338G
FFS MS JOY 366J
KVC MISS K339X

NJF TOP LEVEL 41T
NJF MISS MERCURY 292Z
TSB CHAPARRAL 93Z
MS W MASTERPIECE 264L
FFS DELROY 155D
FFS MS BEEBE 338B
JGK SIGNAL 657R
FFS MARCELLA 88M

BW: 83		ADJ WW: 725		DAM PROD: 1/116			
CED	BW	WW	YW	M	STAY	MARB	REA
+16	-1.4	+54	+75	+24	+21	-0.1	+0.57

Black, polled, purebred. A tremendous Midland Bull Test bull that was purchased by Turnell Cattle Company. He was a high Efficiency, high gaining bull that had marbling and ribeye area together. 311E was a 2023 Birth Weight, Weaning Weight, Yearling Weight and Milk EPD Trait Leader. He is also the first calf from our MJB Spanish Lady 178C cow. 178C also raised the \$10,000 High Selling heifer at the National Western Stock Show selling to Rowell Cattle Company, also the buyer of the 2023 Pick of the Heifer Crop for \$7500. The Cowman's Kind! Recognized as a Gold Dam for her Superior Maternal Traits, she is the feature cow as our Purebred Donor. You have only just begun to see her influence. After seeing calf crop after calf crop of tremendous progeny, we went back and collected semen on 311E and it has been truly rewarding to see his progeny in our program.

Reference Sire



MJB DERRINGER 311E

TATTOO: 311E SA#: 716192 DOB: 2/6/17

**PUREBRED
BLACK
POLLED**

NJF TOP LEVEL 41T
NJF BOULDER 46B
NJF MISS MERCURY 292Z

TSB CHAPARRAL 93Z
*MJB SPANISH LADY 178C
MS W MASTERPIECE 264L

GGT P BLK QUANTUM 207M
NJF MISS FEIST 215M
KKCC MERCURY 416P
NJF MISS PATHFINDER 7009
ASH BUG 7U
TSB CAROLINE 11W
W MASTERPIECE 107D
MISS W BLK NUGGET 66E

CED	BW	WW	YW	M	STAY	MARB	REA
+18.0	-2.1	+58	+83	+17	+18	-0.1	+60





DR SUBSTANCE 2L



The National Grand Champion Bull at the Cattleman's Congress in 2022 and 2023. Sired by Bulletproof, he was our pick of Purebreds to flush our 178C donor cow to.

TATTOO: 2L SA#: 756466 DOB: 3/4/23

**PUREBRED
BLACK
POLLED**

GGT P BULLETPROOF 901F
GGT SUBSTANCE 971H
GGT BELLA 249G

TSB CHAPARRAL 93Z
***MJB SPANISH LADY 178C**
MS W MASTERPIECE 264L

*GGT P BLK HEAVY HITTER
GGT P BK CHERUB 603E
GGT P BARRELHOUSE 223C
GGT P BK ZENITH 152D
ASH BUG 7U
TSB CAROLINE 11W
W MASTERPIECE 107D
MISS W BLK NUGGET 66E

BW: 88		ADJ WW: 698		DAM PROD: 10/102			
GED	BW	WW	YW	M	STAY	MARB	REA
+17	-1.9	+56	+78	+21	+18	-0.3	+0.75

178C alert! Why not buy one out of the best cows on the place. Everyone that comes through admires her elite skeleton, fantastic udder, and unmatched production record. She has made herd bull after herd bull as well as high selling females all across the country. 2L himself is a full sib to several of the replacement heifers offered in this sale and he himself offers a world of doability with a look of longevity. If rebuilding your cowherd with proven genetics sits on the forefront of your mind, get in here. **Mother Is A Gold Dam.**

The Balboa Sons



Reference Sire



GGT P BK BALBOA 240G

TATTOO: 240G SA#: 731515 DOB: 1/27/19

**1/2 SA 1/2 AN
BLACK
POLLED**

GGT GRANITE 210B
GGT P BK BALBOA 53E
*GGT MS DESIGN 302Y
CONNEALY CONSENSUS 7229
GGT CONSENT 334Z
GGT P BLK SUNRISE 1S

SITZ UPWARD 307R
*GGT P BLK JUDY 73S
BON VIEW NEW DESIGN 1407
GGT P BLK ESTHER 254P
CONNEALY CONSENSUS
BLUE LILLY OF CONANGA 16
*GGT P HEAVY DUTY 100J
GGT P ESCALADA 176P

GED	BW	WW	YW	M	STAY	MARB	REA
+12.7	-0.5	+67	+98	+19	+15	+0.3	+51

A grandson of Granite 210B going back to Heavy Duty on the bottom side. He puts some power to his sons. His EPDs rank in the Top 25% for WW and YW and Top 20% for Marbling. He is super long bodied and stout. You will like this stout set of Balboa sons.





MATERNAL BROTHER SOLD IN 2023 SALE



24



DR BALBOA 49L

TATTOO: 49L SA#: 756383 DOB: 3/21/23

1/2 SA 1/2 AN
HOMOZYGOUS BLACK
HOMOZYGOUS POLLED

GGT P BK BALBOA 53E
GGT P BK BALBOA 240G
GGT CONSENT 334Z

MAC F1 ENDURO 43E
MJB GEMMA 109H
MJB YELLOW ROSE 172B

GGT GRANITE 210B
*GGT MS DESIGN 302Y
CONNEALY CONSENSUS 7229
GGT P BLK SUNRISE 1S
CONNEALY COMRADE 1385
MAC CARINA 176C
*TSB TULSA 82W
MJB MS PRISTINE 111W

BW: 86		ADJ WW: 651		DAM PROD: 2/106			
CED	BW	WW	YW	M	STAY	MARB	REA
+11	+0.2	+69	+106	+21	+13	+0.4	+0.28

49L is considered by many to be one of, if not the best, bull in the sale offering. He is next level in his balance from the side and looks exceptional stopped and on the move. He is eye appealing and shapely with a fantastic rib cage and tremendous muscle pattern. His heart and forerib makes for a great underline and then from behind he does not disappoint. His dam is one of the good young cows and his spread from birth to yearling is intriguing. Come find him!

25



DR BALBOA 41L

TATTOO: 41L SA#: 756379 DOB: 3/23/23

1/2 SA 1/2 AN
BLACK
HOMOZYGOUS POLLED

GGT P BK BALBOA 53E
GGT P BK BALBOA 240G
GGT CONSENT 334Z

MCD SF ANSWER 71 - 3545
***MJB 3545 ANSWER 164G**
MJB SUNFLOWER 133C

GGT GRANITE 210B
*GGT MS DESIGN 302Y
CONNEALY CONSENSUS 7229
GGT P BLK SUNRISE 1S
CONNEALY ANSWER 71
SF MISS 975
*MAC TORRINGTON 139T
FFS MS UPGRADE 1159U

BW: 85		ADJ WW: 769		DAM PROD: 3/109			
CED	BW	WW	YW	M	STAY	MARB	REA
+13	+0.0	+70	+99	+23	+13	+0.4	+0.58

Here is a high quality and complete option that checks all the boxes. The bull has ample depth of body and spring to his rib with an impressive progression of width to a big pin set. **Mother Is A Gold Dam.**

26



DR BALBOA 50L

TATTOO: 50L SA#: 756385 DOB: 3/18/23

5/8 SA 3/8 AN
HOMOZYGOUS BLACK
HOMOZYGOUS POLLED

GGT P BK BALBOA 53E
GGT P BK BALBOA 240G
GGT CONSENT 334Z

TSB MAVERICK 24C
MJB SALLY 138G
MJB POCAHONTAS 122D

GGT GRANITE 210B
*GGT MS DESIGN 302Y
CONNEALY CONSENSUS 7229
GGT P BLK SUNRISE 1S
KEYS LONGSHOT 1Z
TSB HALIEY 3A
MJB APACHE 241X
LCC PRIDE K3073

BW: 92		ADJ WW: 730		DAM PROD: 3/104			
CED	BW	WW	YW	M	STAY	MARB	REA
+13	+0.0	+68	+103	+18	+12	+0.2	+0.57

50L has continued to rise on our list of heaters as he has grown and developed and is one of Justin's favorites in the sale. Every time we get to talking about the one's we like best he always poses the question, "Tell me one hole or one problem that 50L has." Make no mistake, he is correct. This one is as complete and fault free as we can make them. His muscle pattern is square and smooth with great rib and fleshing ability. He balances very well from the profile and tracks out with comfort and ease. His tight sheath only adds to his value. Study this one and you'll see what Justin is making sure we all take note of!



LOT 28

27



DR BALBOA 31L

TATTOO: 31L SA#: 756367 DOB: 3/21/23

GGT P BK BALBOA 53E
GGT P BK BALBOA 240G
 GGT CONSENT 334Z
 3/4 SA 1/4 AN
BLACK
HOMOZYGOUS POLLED
 DJF DAYBREAK 264D
MJB SUNRISE 132F
 *MJB MS DAWN 171W

GGT GRANITE 210B
 *GGT MS DESIGN 302Y
 CONNEALY CONSENSUS 7229
 GGT P BLK SUNRISE 1S
 DJF ZODIAK 941Z
 DJF ZOEY 264Z
 SW THUNDER 9T
 MISS W BAR NONE 31J

BW: 92		ADJ WW: 671		DAM PROD: 4/97			
CED	BW	WW	YW	M	STAY	MARB	REA
+10	+1.5	+64	+95	+21	+12	-0.1	+0.60

31L is without question the most masculine and rugged bull in the sale with an abundance of feature, bone, and power. So if you want one that is going to inject performance, weight and muscle into his feeder calves then this bull has to be at the top of your list. Huge topped, big ribbed, and so dimensional in his stifle. His density is a must see.

28



DR BALBOA 28L

TATTOO: 28L SA#: 756364 DOB: 3/12/23

GGT P BK BALBOA 53E
GGT P BK BALBOA 240G
 GGT CONSENT 334Z
 1/2 SA 1/2 AN
HOMOZYGOUS BLACK
POLLED
 SRS SPARTACUS 0670Z
***MJB CLEOPATRA 124C**
 MJB BARBIE 136A

GGT GRANITE 210B
 *GGT MS DESIGN 302Y
 CONNEALY CONSENSUS 7229
 GGT P BLK SUNRISE 1S
 SRS XTRA 0347X
 SRS SEIKO 0670S
 MJB BARBWIRE 260S
 MJB MS STYLE 157S

BW: 105		ADJ WW: 785		DAM PROD: 7/106			
CED	BW	WW	YW	M	STAY	MARB	REA
+7	+3.0	+73	+106	+22	+20	+0.1	+0.54

28L is one of the true standouts in the sale that has been a favorite of many visitors. He is one of the big, heavy weight bulls that's incredible in his rib cage with so much depth in his heart and flank. He has the right kind of muscle pattern being stout and massive but smooth and correct. Then his structure just elevates his quality with an awesome set to his hip, hock, and pastern. Elite herd bull prospect. **Mother Is A Gold Dam.**





LOT 29

Out of one of the best producers on the place! Interestingly enough 108E has never produced a female and although we are patiently waiting for the day she does so, she has also never made a bull that didn't land in the top 10 in the bull pen either. She's a model cow for size, rib, and udder quality that stamps a look of true herd bull material in every son she has produced. She breeds back quickly every year and always does a fantastic job. Her 2023 bull calf 72L is certainly no exception to quality. Man he is dense and powerful with significantly above average rib and fleshing ability. On the move his feet and legs flex and give with added athleticism. Tight sheathed and big testicled.

29



DR BALBOA 72L

TATTOO: 72L SA#: 756263 DOB: 3/7/23

GGT P BK BALBOA 53E
GGT P BK BALBOA 240G
 GGT CONSENT 334Z

5/8 SA 3/8 AN
HOMOZYGOUS BLACK
POLLED

NJF BOULDER 46B
MJB DIAMOND 108E
 MJB CLEOPATRA 107C

GGT GRANITE 210B
 *GGT MS DESIGN 302Y
 CONNEALY CONSENSUS 7229
 GGT P BLK SUNRISE 1S

NJF TOP LEVEL 41T
 NJF MISS MERCURY 292Z
 SRS SPARTACUS 0670Z
 MJB MS RESOLUTION 125A

BW: 89		ADJ WW: 698		DAM PROD: 5/101			
GED	BW	WW	YW	M	STAY	MARB	REA
+16	-2.2	+63	+99	+18	+15	+0.1	+0.73

30



DR BALBOA 71L

TATTOO: 71L SA#: 756404 DOB: 3/13/23

GGT P BK BALBOA 53E
GGT P BK BALBOA 240G
 GGT CONSENT 334Z

5/8 SA 3/8 AN
HOMOZYGOUS BLACK
HOMOZYGOUS POLLED

TSB MAVERICK 24C
MJB SALLY 155G
 MJB MUSTANG 111D

GGT GRANITE 210B
 *GGT MS DESIGN 302Y
 CONNEALY CONSENSUS 7229
 GGT P BLK SUNRISE 1S

KEYS LONGSHOT 1Z
 TSB HALIEY 3A
 SRS BENCHMARK 8105B
 MJB MS QUARTERBACK 121B

BW: 84		ADJ WW: 699		DAM PROD: 2/103			
GED	BW	WW	YW	M	STAY	MARB	REA
+14	-1.0	+62	+93	+18	+15	+0.3	+0.86

71L has a real beef bull look about him with a masculine front end and comes back extra long bodied yet is still hooked up strong behind his shoulder and correct in his hip loin. Structurally he gets out and handles himself well on the go with a long and forward reaching stride. Love the athleticism and ruggedness he offers.



31



DR BALBOA 24L

TATTOO: 24L SA#: 756360 DOB: 3/15/23

GGT P BK BALBOA 53E
GGT P BK BALBOA 240G
 GGT CONSENT 334Z

3/4 SA 1/4 AN
BLACK
HOMOZYGOUS POLLED

NJF BOULDER 46B
MJB DIAMOND 128F
 MJB SPANISH LADY 169C

GGT GRANITE 210B
 *GGT MS DESIGN 302Y
 CONNEALY CONSENSUS 7229
 GGT P BLK SUNRISE 1S

NJF TOP LEVEL 41T
 NJF MISS MERCURY 292Z
 TSB CHAPARRAL 93Z
 MJB MS DAWN 163Z

BW: 90		ADJ WW: 668		DAM PROD: 4/96			
GED	BW	WW	YW	M	STAY	MARB	REA
+11	-0.4	+61	+86	+17	+18	+0.1	+0.69

Here is a really rugged made bull that offers a lot of rib and doability. He's long bodied and long hipped so not surprisingly he gets out and tracks well. 24L is powerful and dense.



LOT 31

32



DR BALBOA 61L

TATTOO: 61L SA#: 756261 DOB: 2/26/23

GGT P BK BALBOA 53E
GGT P BK BALBOA 240G
 GGT CONSENT 334Z
 1/2 SA 3/8 AN 1/8 AR
HOMOZYGOUS BLACK
HOMOZYGOUS POLLED
 KEYS RETRIBUTION 18B
MTB LORETTA 172G
 MJB MISS FIRESTORM 175A

GGT GRANITE 210B
 *GGT MS DESIGN 302Y
 CONNEALY CONSENSUS 7229
 GGT P BLK SUNRISE 1S
 KEYS DIRECT FIRE 18Y
 MISS KEY KRISTIN 57Y
 MJB SALUTE 263S
 MJB MS PRISTINE 103W

BW: 79		ADJ WW: 627		DAM PROD: 3/92			
CED	BW	WW	YW	M	STAY	MARB	REA
+13	-1.3	+54	+82	+17	+15	+0.3	+0.43

Heifer Bull. 61L is a masculine, stout featured bull that is so good in his shape everywhere. He opens up extra expressive in behind his shoulder and out through his hip with added length and shape across his stifle. Lots of power here!

33



DR BALBOA 82L

TATTOO: 82L SA#: 756419 DOB: 3/18/23

GGT P BK BALBOA 53E
GGT P BK BALBOA 240G
 GGT CONSENT 334Z
 1/2 SA 1/2 AN
BLACK
POLLED
 KEYS RETRIBUTION 18B
MTB LORETTA 104E
 MJB CHEERS 172C

GGT GRANITE 210B
 *GGT MS DESIGN 302Y
 CONNEALY CONSENSUS 7229
 GGT P BLK SUNRISE 1S
 KEYS DIRECT FIRE 18Y
 MISS KEY KRISTIN 57Y
 MJB TOUCHDOWN 209A
 MJB ROYALTY 102T

BW: 94		ADJ WW: 701		DAM PROD: 5/99			
CED	BW	WW	YW	M	STAY	MARB	REA
+13	-0.7	+61	+93	+18	+17	+0.3	+0.44

82L is very fundamentally correct. He is very complete and fault free with a lot of depth to his body and extra fleshing ability. His muscle pattern sets in right with a nice balance from the profile.

The Freedom Sons



MAC F1 FREEDOM 150F

TATTOO: 150F SA#: 727868 DOB: 2/17/18

He's been one of the key herdsires to make those attractive females with tremendous udders and those herd bulls that add not only pounds but a truly attractive phenotype. We've used him on heifers and cows with great success. His EPDs rank in the Top 20% for WW, Top 10% for YW and Milk and Top 6% for Docility. His length of body and conformation is outstanding.

1/2 SA 1/2 AN
BLACK
POLLED

CONNEALY CONSENSUS 7229
CONNEALY COMRADE 1385
 HAPPY GEE OF CONANGA 919
 MAC WYNDHAM 54W
 *MAC AZURE 81A
 MAC YAVANNAH 351Y

CONNEALY CONSENSUS
 BLUE LILLY OF CONANGA 16
 G A R NEW DESIGN 5050
 HAP GINA OF CONANGA 260 4965
 *MAC TOPEKA 159T
 MAC TERRI 127T
 *MAC NAVIGATOR 281N
 MAC SAVANNAH 259S

CED	BW	WW	YW	M	STAY	MARB	REA
+11.8	-0.5	+68	+109	+25	+15	+0.2	+6.4





34



DR FREEDOM 6L

TATTOO: 6L SA#: 756402 DOB: 1/30/23

5/8 SA 3/8 AN
HOMOZYGOUS BLACK
HOMOZYGOUS POLLED

MAC F1 FREEDOM 150F

*MAC AZURE 81A

GGT SMOKECREEN 213F

MJB SHADOW 109J

MJB GEMMA 199G

CONNEALY CONSENSUS 7229
HAPPY GEE OF CONANGA 919

MAC WYNDHAM 54W
MAC YAVANNAH 351Y

*GGT FINAL CHOICE 119B
GGT MS MUSIC 126Z

MAC F1 ENDURO 43E
XANDERIA 183 157MJB

BW: 81 ADJ WW: 668 DAM PROD: 1/107

CED	BW	WW	YW	M	STAY	MARB	REA
+11	+0.4	+78	+126	+24	+17	+0.3	+0.85

6L is one of our absolute favorites. So good structured, even better balanced, and then the rib of the tight sheathed bull amplifies how well made and attractive he is. We can write paragraphs on this one, but he will be best understood by seeing him in person. This one is the real deal.



35



DR FREEDOM 13L

TATTOO: 13L SA#: 756310 DOB: 1/29/23

5/8 SA 3/8 AN
HOMOZYGOUS BLACK
HOMOZYGOUS POLLED

MAC F1 FREEDOM 150F

*MAC AZURE 81A

GGT P BK FOUNDATION 115F

MJB MOUNTAIN MAJESTY 117J

MJB 3545 ANSWER 197G

CONNEALY CONSENSUS 7229
HAPPY GEE OF CONANGA 919

MAC WYNDHAM 54W
MAC YAVANNAH 351Y

GGT P BK SUMMIT 48A
GGT P BK TWILIGHT 211T

MCD SF ANSWER 71 - 3545
MJB SPANISH LADY 193B

BW: 89 ADJ WW: 679 DAM PROD: 1/108

CED	BW	WW	YW	M	STAY	MARB	REA
+9	+2.1	+76	+121	+23	+16	+0.1	+0.86

ABSOLUTE SALE FEATURE! Everything you expect from a Freedom son on display right here! So much quality and balance; we love how this bull is put together from the side with the way that he blends everything together and yet he comes with an incredible amount of mass and performance. Extra rib and flesh to stack on top of it all. Incredible individual.



36



DR FREEDOM 11L

TATTOO: 11L SA#: 756288 DOB: 2/2/23

1/2 SA 1/2 AN
HOMOZYGOUS BLACK
POLLED

MAC F1 FREEDOM 150F

*MAC AZURE 81A

MJB VALIANT 373G

MJB VALERI 126J

MJB CLEOPATRA 101D

CONNEALY CONSENSUS 7229
HAPPY GEE OF CONANGA 919

MAC WYNDHAM 54W
MAC YAVANNAH 351Y

MJB MANNING 342C
MJB MS MAJESTY 124A

SRS SPARTACUS 0670Z
MJB FOXY LADY 140B

BW: 72 ADJ WW: 539 DAM PROD: 1/86

CED	BW	WW	YW	M	STAY	MARB	REA
+15	-2.5	+48	+67	+20	+17	+0.3	+0.15

Heifer Bull. Awesome heifer bull candidate here that blends a smooth shoulder into a strong topline.

37



DR FREEDOM 8L

TATTOO: 8L SA#: 756413 DOB: 1/29/23

1/2 SA 1/2 AN
BLACK
HOMOZYGOUS POLLED

CONNEALY COMRADE 1385
MAC F1 FREEDOM 150F
*MAC AZURE 81A
MJB VALIANT 373G
MJB VALERI 153J
MJB SALLY 122E

CONNEALY CONSENSUS 7229
HAPPY GEE OF CONANGA 919
MAC WYNDHAM 54W
MAC YAVANNAH 351Y
MJB MANNING 342C
MJB MS MAJESTY 124A
TSB MAVERICK 24C
*MJB YELLOW ROSE 121Y

BW: 84		ADJ WW: 634		DAM PROD: 1/101			
CED	BW	WW	YW	M	STAY	MARB	REA
+12	+0.2	+71	+112	+20	+17	+0.3	+0.77

8L is masculine up front but transitions it smooth into his shoulder and powers back to a bold forerib and strong topline. He is set right in his tailhead and tight sheathed.

38



DR FREEDOM 14L

TATTOO: 14L SA#: 756321 DOB: 1/21/23

1/2 SA 1/2 AN
HOMOZYGOUS BLACK
HOMOZYGOUS POLLED

CONNEALY COMRADE 1385
MAC F1 FREEDOM 150F
*MAC AZURE 81A
GGT P BK BALBOA 240G
MJB SANTA MARIA 179J
MJB BARBIE 109Y

CONNEALY CONSENSUS 7229
HAPPY GEE OF CONANGA 919
MAC WYNDHAM 54W
MAC YAVANNAH 351Y
GGT P BK BALBOA 53E
GGT CONSENT 334Z
MJB BARBWIRE 260S
*MJB MS PRISTINE 107W

BW: 77		ADJ WW: 537		DAM PROD: 1/86			
CED	BW	WW	YW	M	STAY	MARB	REA
+10	-1.8	+60	+88	+21	+15	+0.4	+0.49

Here is a moderate, smooth shouldered bull that's strong topped and level hipped.

The Garrelli Sons



MJB Garrelli 372G is a tremendous bull with added length of body who was one of our heaviest calves at weaning that year. He is sired by MAC Enduro 43E that we own with Parke Ranch, Montana and he puts that added length and stretch in his calves with WW in top 26%, YW top 14%, Milk top 20% and Stayability in top 5%. His dam was a model cow that was big bodied and soggy with a square hip having that same added length of body.

Reference Sire



MJB GARRELLI 372G

TATTOO: 372G SA#: 732710 DOB: 3/19/19

1/2 SA 1/2 AN
BLACK
POLLED

CONNEALY COMRADE 1385
MAC F1 ENDURO 43E
MAC CARINA 176C
OPP FRONTIER 771T
MJB PRISTINE 135X
MJB 51 DATELINE 168S

CONNEALY CONSENSUS 7229
HAPPY GEE OF CONANGA 919
*S NEBRASKA 330N
MAC WILLOW 134W
B/R NEW FRONTIER 095
OPP LADY 41K
W VERM DATELINE 51M
*MISS W MAGIC POWER 41H

CED	BW	WW	YW	M	STAY	MARB	REA
+9.5	+1.1	+69	+113	+25	+20	+0.1	+7.0





39



DR GARELLI 64L

TATTOO: 64L SA#: 756397 DOB: 3/7/23

MAC F1 ENDURO 43E
MJB GARRELLI 372G
 MJB PRISTINE 135X
 HOMOZYGOUS BLACK
 HOMOZYGOUS POLLED
 MJB TOUCHDOWN 209A
MJB CHEERS 172C
 MJB ROYALTY 102T

CONNELLY COMRADE 1385
 MAC CARINA 176C
 OPP FRONTIER 771T
 MJB 51 DATELINE 168S
 GGT END RUN 240X
 *MJB PRISTINE 106X
 M A R MIDLAND EMPIRE 3092
 MJB GRIZZLY ROSE 124R

BW: 102		ADJ WW: 791		DAM PROD: 6/103			
CED	BW	WW	YW	M	STAY	MARB	REA
+9	+1.8	+80	+125	+24	+18	+0.1	+0.46

64L has looked like this since the day he was born, what a beast! If you are searching for a true cow bull whose calves will absolutely smash down the scales at weaning, then you have landed on the right bull here! Nothing I could write would replace seeing how impressive he is in person. Truly is the biggest bodied and most massive bull of the entire set, and maybe of any bull we have ever put together. His mother is a marquee cow so his maternal backing just adds to his breeding value. His structure is good, his mass is undeniable, and his quality will rival any. Don't let this one slip by!



40



DR GARRELLI 39L

TATTOO: 39L SA#: 756375 DOB: 3/11/23

MAC F1 ENDURO 43E
MJB GARRELLI 372G
 MJB PRISTINE 135X
 MJB BARBWIRE 260S
***MJB BARBIE 126Z**
 MJB MORGIANA 102S

CONNELLY COMRADE 1385
 MAC CARINA 176C
 OPP FRONTIER 771T
 MJB 51 DATELINE 168S
 W POWER BOSS 203P
 MS W INDEPENDENCE 214L
 MORGANS DIRECTION 111 9901
 MJB PUMA 103P

BW: 90		ADJ WW: 830		DAM PROD: 7/108			
CED	BW	WW	YW	M	STAY	MARB	REA
+8	+1.8	+76	+118	+23	+13	+0.0	+0.45

39L's mother established her dominance in our cowherd early on when she made Gladiator. He was the high selling bull of the breed the year he sold in the National Sale at Denver and what he went on to do will go down in the record books. We think this bull resembles the level of quality and potential impact Gladiator had at this point in his life. In fact, he weaned significantly heavier and has a more impressive EPD profile than his maternal brother so there is optimism that he may surpass him. 39L himself has added length and stoutness on a really sound set of feet and legs. Cowboys get in! **Mother Is A Gold Dam.** Retaining an in-herd semen interest.

29L's mother is a direct decedent of 178C and sits right with them at the top for best females she has put in production. 186G is ideal in her balanced and body type with a beautiful udder and great feet. The bull himself is top notch, being well balance from every angle and having an abundance of rib and power. His shape and power draws you in and really makes you appreciate all the things he does so well.

41



DR GARRELLI 29L

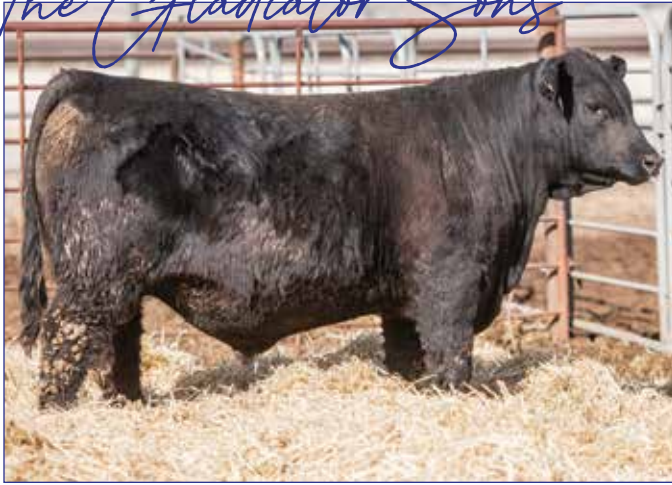
TATTOO: 29L SA#: 756365 DOB: 3/6/23


MAC F1 ENDURO 43E
MJB GARRELLI 372G
 MJB PRISTINE 135X
 HOMOZYGOUS BLACK
 HOMOZYGOUS POLLED
 MCD SF ANSWER 71 - 3545
MJB 3545 ANSWER 186G
 *MJB SPANISH LADY 178C

CONNELLY COMRADE 1385
 MAC CARINA 176C
 OPP FRONTIER 771T
 MJB 51 DATELINE 168S
 CONNELLY ANSWER 71
 SF MISS 975
 TSB CHAPARRAL 93Z
 MS W MASTERPIECE 264L

BW: 98		ADJ WW: 672		DAM PROD: 2/97			
CED	BW	WW	YW	M	STAY	MARB	REA
+7	+2.2	+72	+115	+23	+21	+0.0	+0.81

The Gladiator Sons



Reference Sire  **MJB GLADIATOR 324H**
TATTOO: 324H SA#: 737204 DOB: 3/1/20

SRS SPARTACUS 0670Z	SRS XTRA 0347X
MJB GLADIATOR 305B	SRS SEIKO 0670S
*MJB BARBIE 126Z	MJB BARBWIRE 260S
	MJB MORGIANA 102S
	GGT END RUN 240X
MJB TOUCHDOWN 209A	*MJB PRISTINE 106X
MJB CHEERS 172C	M A R MIDLAND EMPIRE 309Z
MJB ROYALTY 102T	MJB GRIZZLY ROSE 124R

CED	BW	WW	YW	M	STAY	MARB	REA
+15.3	-1.9	+49	+77	+19	+18	+0.3	+.28

North Dakota, and later went to Parke Ranch, Montana. We used him initially as a clean-up bull on our heifers. He will give you easy calving progeny with good udder quality in his daughters. His EPDs rank in the top 10% for Marbling and top 20% for Birth and CED.

An own Son of Gladiator 305B, who was the High Selling Optimizer at the 2015 National Western Stock Show selling to Deichman Cattle, Montana, Jensen Brothers, Montana, Panther Country Salers, Nebraska, and MacDonald Ranches,

42 DR KINGDOM 68L

TATTOO: 68L SA#: 756401 DOB: 3/27/23

MJB GLADIATOR 305B
MJB GLADIATOR 324H
 MJB CHEERS 172C
5/8 SA 3/8 AN
HOMOZYGOUS BLACK
HOMOZYGOUS POLLED
 TSB MAVERICK 24C
MJB SALLY 146G
 MJB MUSTANG 108D

SRS SPARTACUS 0670Z
 *MJB BARBIE 126Z
 MJB TOUCHDOWN 209A
 MJB ROYALTY 102T
 KEYS LONGSHOT 1Z
 TSB HALIEY 3A
 SRS BENCHMARK 8105B
 MJB CLEOPATRA 134B

BW: 85		ADJ WW: 710		DAM PROD: 3/103			
CED	BW	WW	YW	M	STAY	MARB	REA
+12	-1.3	+57	+84	+18	+20	+0.2	+0.68



68L is one we keep coming back to and finds his way onto a lot of short lists for having so much rib and doability. He has as much forerib, heart, and flank as any. This easy fleshing bull is so smooth in his make, and I think about the heifers this one can make and get excited! What's deceiving is how powerful he is from behind and how well built he is. Comes to us very high quality!

43 DR KINGDOM 7L

TATTOO: 7L SA#: 756411 DOB: 2/23/23

MJB GLADIATOR 305B
MJB GLADIATOR 324H
 MJB CHEERS 172C
1/2 SA 1/2 AN
HOMOZYGOUS BLACK
HOMOZYGOUS POLLED
 MAC F1 FREEDOM 150F
MJB BETSY 105J
 MJB MUSTAND 107G

SRS SPARTACUS 0670Z
 *MJB BARBIE 126Z
 MJB TOUCHDOWN 209A
 MJB ROYALTY 102T
 CONNEALY COMRADE 138S
 *MAC AZURE 81A
 SRS BENCHMARK 8105B
 MJB 338C 190E

BW: 85		ADJ WW: 615		DAM PROD: 1/98			
CED	BW	WW	YW	M	STAY	MARB	REA
+12	+0.1	+54	+84	+20	+13	+0.1	+0.54

One of the really neat ones here! 7L has some really cool pieces that're exciting to breed around. He is so clean up front and ties his neck in so well on top of his shoulder but from behind, wowza! His pin set is incredibly wide, and he pulls that so deep down into his twist and stifle but the coolest part about him being so wide and square is that he can still get out and go so well. His rib shape is phenomenal and 7L has the potential to be as fun to mate around as any!



MATERNAL BROTHER TO LOT 44 SOLD IN 2023 SALE



44



DR KINGDOM 38L

TATTOO: 38L SA#: 756374 DOB: 3/21/23

1/2 SA 1/2 AN
HOMOZYGOUS BLACK
HOMOZYGOUS POLLED

MBJ GLADIATOR 305B
MBJ GLADIATOR 324H
MBJ CHEERS 172C
MBJ MANNING 342C
MBJ VALERIE 109G
MBJ CLEOPATRA 106E

SRS SPARTACUS 0670Z
*MBJ BARBIE 126Z
MBJ TOUCHDOWN 209A
MBJ ROYALTY 102T
MAC QUARTERBACK 58Y
*MBJ BARBIE 120W
SRS SPARTACUS 0670Z
MBJ CHEERS 168C

BW: 83		ADJ WW: 651		DAM PROD: 3/99			
CED	BW	WW	YW	M	STAY	MARB	REA
+13	+0.9	+56	+90	+18	+19	+0.3	+0.29

109G flat gets it done every year. Dad and I have been making our list for the year on cows to flush and she got wrote down immediately. She is elite and consistently stamps that herd bull look in them. 38L is a maternal sib to a high seller from last year that was purchased by Wes Jensen and this bull has that same level of quality! An abundance of power and rib shape in a sound, well designed package. We are big on buying bulls backed by powerful cow families, he offers just that! One of our best!

45



DR KINGDOM 19L

TATTOO: 19L SA#: 756355 DOB: 3/28/23

5/8 SA 3/8 AN
HOMOZYGOUS BLACK
POLLED

MBJ GLADIATOR 305B
MBJ GLADIATOR 324H
MBJ CHEERS 172C
MBJ TOUCHDOWN 209A
MBJ CHEERS 206G
MBJ POCAHONTAS 161C

SRS SPARTACUS 0670Z
*MBJ BARBIE 126Z
MBJ TOUCHDOWN 209A
MBJ ROYALTY 102T
GGT END RUN 240X
*MBJ PRISTINE 106X
MBJ APACHE 241X
MBJ MISS SARAH 100U

BW: 78		ADJ WW: 613		DAM PROD: 3/101			
CED	BW	WW	YW	M	STAY	MARB	REA
+13	-2.9	+47	+75	+19	+15	+0.1	+0.60

Heifer Bull. Love the center body! His rib cage and fleshing ability has us fired up! So deep hearted with an awesome turn to his flank. He screams doability and longevity in a smooth muscled, correctly made package. He is a female maker!

46



DR KINGDOM 40L

TATTOO: 40L SA#: 756377 DOB: 4/8/23

5/8 SA 3/8 AN
HOMOZYGOUS BLACK
POLLED

MJB GLADIATOR 305B
MJB GLADIATOR 324H
MJB CHEERS 172C

GGT END RUN 240X
MJB FOXY LADY 137A
MJB MS DAWN 155X

SRS SPARTACUS 0670Z
*MJB BARBIE 126Z
MJB TOUCHDOWN 209A
MJB ROYALTY 102T

TRIPLE J DESIGN OF FOXCROSS
GGT P BLK PHOENIX 147R
SW THUNDER 9T
MISS W MASTERPIECE 66F

BW: 83		ADJ WW: 767		DAM PROD: 9/103			
CED	BW	WW	YW	M	STAY	MARB	REA
+13	+0.2	+55	+88	+20	+21	+0.1	+0.71

Heifer Bull. Here is one of the younger bulls in the sale with a really good shape to his forerib and as a result he has a lot of mass and power up high in behind his shoulder. He has a massive hip with extra length across his stifle and he takes that substance all the way to the ground. Plus, he has added length and performance.

47



DR KINGDOM 67L

TATTOO: 67L SA#: 756400 DOB: 3/17/23

1/2 SA 1/2 AN
HOMOZYGOUS BLACK
HOMOZYGOUS POLLED

MJB GLADIATOR 305B
MJB GLADIATOR 324H
MJB CHEERS 172C

MAC F1 ENDURO 43E
MJB GEMMA 194G
MJB CHEERS 173C

SRS SPARTACUS 0670Z
*MJB BARBIE 126Z
MJB TOUCHDOWN 209A
MJB ROYALTY 102T

CONNELLY COMRADE 1385
MAC CARINA 176C
MJB TOUCHDOWN 209A
*MJB MISS FIRESTORM 152X

BW: 98		ADJ WW: 672		DAM PROD: 3/97			
CED	BW	WW	YW	M	STAY	MARB	REA
+8	+1.8	+53	+83	+18	+13	+0.2	+0.22

We absolutely love this smooth made bull on the go! His structural quality is incredible with added reach and athleticism up front. This long hiped bull has added looseness to his spine and he's set right in his tailhead so as a result he has the proper flex to his hock and pastern. His longevity potential increases when you recognize his added depth and softness of body. Don't get caught sleeping on this one.

48



DR KINGDOM 60L

TATTOO: 60L SA#: 756395 DOB: 4/9/23

1/2 SA 1/2 AN
HOMOZYGOUS BLACK
HOMOZYGOUS POLLED

MJB GLADIATOR 305B
MJB GLADIATOR 324H
MJB CHEERS 172C

MJB BARBWIRE 260S
MJB BARBIE 131Y
MS W MASTERPIECE 184L

SRS SPARTACUS 0670Z
*MJB BARBIE 126Z
MJB TOUCHDOWN 209A
MJB ROYALTY 102T

W POWER BOSS 203P
MS W INDEPENDENCE 214L
W MASTERPIECE 107D
9106 ANGUS

BW: 95		ADJ WW: 769		DAM PROD: 9/98			
CED	BW	WW	YW	M	STAY	MARB	REA
+13	-1.7	+46	+66	+19	+16	+0.3	+0.34

60L's feet and legs are absolutely outstanding and as a result he is so athletic and correct off of both ends. He is strong topped and smooth made. Here is a world of balance and quality!

49



DR KINGDOM 16LJ

TATTOO: 16LJ SA#: 760275 DOB: 2/19/23

1/2 SA 1/2 AN
HOMOZYGOUS BLACK
HOMOZYGOUS POLLED

MJB GLADIATOR 305B
MJB GLADIATOR 324H
MJB CHEERS 172C

MAC F1 FREEDOM 150F
MJB BETSY 173J
*MJB MS SAMURAI 107A

SRS SPARTACUS 0670Z
*MJB BARBIE 126Z
MJB TOUCHDOWN 209A
MJB ROYALTY 102T

CONNELLY COMRADE 1385
*MAC AZURE 81A
MAC F1 SAMURAI 70S
MJB 199Y

BW: 89		ADJ WW: /		DAM PROD: /			
CED	BW	WW	YW	M	STAY	MARB	REA
+13	-1.1	+56	+87	+22	+16	+0.3	+0.38

Love the presence and intrigue from the side in the way this bull ties his head and neck into the upper part of his shoulder. He is as strong in his top and level in his hip as any bull in the sale with his tail head setting in him right and then he steps down really clean jointed. He doesn't sacrifice any rib or depth either.

50



DR KINGDOM 141L

TATTOO: 141L SA#: 756312 DOB: 3/26/23

5/8 SA 3/8 AN
BLACK
POLLED

MJB GLADIATOR 305B
MJB GLADIATOR 324H
MJB CHEERS 172C

TSB MAVERICK 24C
MJB SALLY 124F
*MJB MISS FIRESTORM 151X

SRS SPARTACUS 0670Z
*MJB BARBIE 126Z
MJB TOUCHDOWN 209A
MJB ROYALTY 102T

KEYS LONGSHOT 1Z
TSB HALIEY 3A
MJB SALUTE 263S
MISS W HIFLYER 152N

BW: 84		ADJ WW: 620		DAM PROD: 4/101			
CED	BW	WW	YW	M	STAY	MARB	REA
+13	-0.7	+53	+85	+18	+17	+0.3	+0.40

A big featured bull with an awesome progression of width from shoulder to hip who is shaped right all the way through.



The Gold Standard Sons



Reference Sire



MJB GOLD STANDARD 304H

TATTOO: 304H SA#: 737217 DOB: 2/7/20

1/2 SA 1/2 AN
BLACK
POLLED

CONNEALY CAPITALIST 028
ECR INVESTMENT 822F
*ECR PLD LADY 50B OF 50X

MJB GLADIATOR 305B
MJB EMPRESS 125F
MJB MS FIRESTORM 167Y

*S A V FINAL ANSWER 0035
PRIDES PITA OF CONANGA 8821
*MAC BLACK VISTA 349Y
*OPP POLLED LADY 50X
SRS SPARTACUS 0670Z
*MJB BARBIE 126Z
MJB SALUTE 263S
MISS W INDEPENDANCE 29N

CED	BW	WW	YW	M	STAY	MARB	REA
+14.2	-0.8	+76	+109	+21	+18	+0.2	+56

The sire of the 2023 High Selling bull in the breed, MJB Krugerrand 379K at \$16,750 to MacDonald Ranches. He is also out of the coming donor 125F – the other prototype cow to the industry. After calving in 2024, she will be entering our donor program. She is a can't miss cow – every animal she has raised is a great one and Gold Standard has proven himself as a great one. He makes herd bulls and outstanding replacement females. Great udders, tremendous maternal, feminine phenotype. Gold Standard was the pick of renowned cowman, Jim Wilson of V Ranch, Wyoming, and now will reside in the pastures of GG&T Land & Cattle in Kansas.

51 DR GOLD STANDARD 10L

TATTOO: 10L SA#: 756277 DOB: 1/31/23

5/8 SA 3/8 AN
BLACK
HOMOZYGOUS POLLED

ECR INVESTMENT 822F
MJB GOLD STANDARD 304H
MJB EMPRESS 125F

GGT P BK BALBOA 240G
MJB SANTA MARIA 121J
MJB SALLY 146G

CONNEALY CAPITALIST 028
*ECR PLD LADY 50B OF 50X
MJB GLADIATOR 305B
MJB MS FIRESTORM 167Y
GGT P BK BALBOA 53E
GGT CONSENT 334Z
TSB MAVERICK 24C
MJB MUSTANG 108D

BW: 87		ADJ WW: 714		DAM PROD: 1/114			
CED	BW	WW	YW	M	STAY	MARB	REA
+12	+0.0	+73	+97	+22	+20	+0.2	+0.51

52 DR GOLD STANDARD 9L

TATTOO: 9L SA#: 756414 DOB: 2/2/23

1/2 SA 1/2 AN
BLACK
POLLED

ECR INVESTMENT 822F
MJB GOLD STANDARD 304H
MJB EMPRESS 125F

MAC F1 FREEDOM 150F
MJB BETSY 210J
MJB MS PRISTINE 111Y

CONNEALY CAPITALIST 028
*ECR PLD LADY 50B OF 50X
MJB GLADIATOR 305B
MJB MS FIRESTORM 167Y
CONNEALY COMRADE 1385
*MAC AZURE 81A
OPP FRONTIER 771T
*MJB BARBIE 120W

BW: 77		ADJ WW: 613		DAM PROD: 1/98			
CED	BW	WW	YW	M	STAY	MARB	REA
+15	-1.5	+57	+82	+23	+20	+0.4	+0.41

Dad's favorite calf right here and he has held his own all the way. Without question was THE standout on the side of his mother and she herself is one of our very best young cows. Not every day does one possess this level of balance and quality from every angle and during every stage of production. His presence is the real deal, his muscle pattern is powerful, and his impact is going to be incredible! Come find him and then buy him, an absolute stud!

Heifer Bull. 9L is so easy to find in the pen! You want to talk about one with rib and body, he'll get you excited! He is tremendous in depth and spring of rib with added fleshing ability. Pair that with his added moderation of frame and this will be one of the easy keeping bulls that should come off of cows in excellent shape.



53



DR JUNEAU 306L

TATTOO: 306L SA#: 756899 DOB: 2/28/23

5/8 SA 3/8 AN
RED
SCURRED

ECR JUNEAU 352J

ECR RESOURCE 702 OF 116Y
OPP BLK LADY 53W OF 53S

DLB GLDR PEG 701E

MJB GLADIATOR 305B
DLB FROSTY PEG 75ZS A V RESOURCE 1441
OPP LADY PRIDE 116Y
JSR BARBADOS 720T
OPP BLACK LADY 53SSRS SPARTACUS 0670Z
*MJB BARBIE 126ZOPP X059 OF 53T
DLB OPPORTUNITY PEG 75R

BW: 78 ADJ WW: 791 DAM PROD: 1/105

GED	BW	WW	YW	M	STAY	MARB	REA
+11	+3.1	+79	+123	+17	+12	-0.1	+0.45



LOT 53

The lone red one, and you better believe he is a stud! I mean truth be told I don't know what more you want. Power and rib, check. Style and balance, check. Structural integrity and build, check. They don't get any better and they don't get any higher quality. If you are serious about making your cow herd better, don't be blinded by his color and just buy the bull. You won't be disappointed I promise.

54



DR JUNEAU 319L

TATTOO: 319L SA#: 756896 DOB: 3/8/23

5/8 AN 3/8 SA
BLACK
HOMOZYGOUS POLLED

ECR JUNEAU 352J

ECR RESOURCE 702 OF 116Y
OPP BLK LADY 53W OF 53S

DLB 3J MIDNITE 946G

3J REDWATER 14B
DLB GD MIDNIGHT 558CS A V RESOURCE 1441
OPP LADY PRIDE 116Y
JSR BARBADOS 720T
OPP BLACK LADY 53SCONNEALY COUNTDOWN
3J LADYOPP 1002Y OF 50U
DLB SNAP MIDNITE C100U

BW: 77 ADJ WW: 835 DAM PROD: 2/113

GED	BW	WW	YW	M	STAY	MARB	REA
+14	-0.6	+70	+113	+20	+12	+0.3	+0.53

Heifer Bull. 319L is a high performing, long bodied bull that gets out and moves with tremendous ease. He is strong topped, and level hiped with an attractive hind leg and clean joint work. Take a strong look at his spread from birth to yearling, incredible. 835lb weaning!

Reference
Sire

ECR JUNEAU 352J

TATTOO: ECR352J SA#: P744221 DOB: 2/1/21

1/2 SA 1/2 AN
BLACK
POLLEDS A V RESOURCE 1441
ECR RESOURCE 702 OF 116Y
OPP LADY PRIDE 116YJSR BARBADOS 720T
OPP BLK LADY 53W OF 53S
OPP BLACK LADY 53S

RITO 707 OF IDEAL 3407 7075

S A V BLACKCAP MAY 4136
HARB PENDLETON 765 J H
SCR PRIDE U456*JSR JAMACA 431
JSR MS PACIFIC 571
*S NEBRASKA 330N
OPP BLACK LADY 19M

GED	BW	WW	YW	M	STAY	MARB	REA
+12.7	-0.2	+62	+99	+16	+16	+0.3	+0.33

55



DR JUNEAU 309L

TATTOO: 309L SA#: 756897 DOB: 3/1/23

1/2 SA 1/2 AN
BLACK
HOMOZYGOUS POLLED

ECR JUNEAU 352J

ECR RESOURCE 702 OF 116Y
OPP BLK LADY 53W OF 53S

DLB VEL FLOWER 904G

MJB VELOCITY 414E
DLB GLDR FLOWER 758ES A V RESOURCE 1441
OPP LADY PRIDE 116Y
JSR BARBADOS 720T
OPP BLACK LADY 53SKEYS RETRIBUTION 18B
MJB MARY 134CMJB GLADIATOR 305B
DLB NTRN SCARLETT 315A

BW: 77 ADJ WW: 686 DAM PROD: 2/91

GED	BW	WW	YW	M	STAY	MARB	REA
+14	-1.1	+50	+78	+13	+17	+0.3	+0.73

Heifer Bull. 309 is moderate and dense with as much power and product as you could ever ask for! He brings forth that masculine and rugged herd bull look with added feature and bone. Made right and high quality.



LOT 55





LOT 57

56



DR JUNEAU 344L

TATTOO: 344L SA#: 756902 DOB: 3/21/23

5/8 SA 3/8 AN
BLACK

HOMOZYGOUS POLLED

ECR JUNEAU 352J

ECR RESOURCE 702 OF 116Y
OPP BLK LADY 53W OF 53S

DLB VEL JASMINE 010H

DLB GLADIATOR JASMINE 813
MJB VELOCITY 414E

S A V RESOURCE 1441
OPP LADY PRIDE 116Y
JSR BARBADOS 720T
OPP BLACK LADY 53S

KEYS RETRIBUTION 18B
MJB MARY 134C

MJB GLADIATOR 305B
DLB STAR JASMINE 510C

BW: 82 ADJ WW: 797 DAM PROD: 2/101

CEW	BW	WW	YW	M	STAY	MARB	REA
+8	+0.8	+55	+87	+13	+17	+0.2	+0.79

Enjoy the length and extension up front in the 344L bull that is long bodied and level out his hip. He has a good turn in his quarter. Out of a Velocity daughter that goes back to Gladiator. Some outstanding bloodlines here!

57



DR JUNEAU 349L

TATTOO: 349L SA#: 756893 DOB: 3/23/23

5/8 AN 3/8 SA
HOMOZYGOUS BLACK

HOMOZYGOUS POLLED

ECR JUNEAU 352J

ECR RESOURCE 702 OF 116Y
OPP BLK LADY 53W OF 53S

DLB 3J ALLSPICE 933G

DLB FROST SPICE 634Z
3J REDWATER 14B

S A V RESOURCE 1441
OPP LADY PRIDE 116Y
JSR BARBADOS 720T
OPP BLACK LADY 53S

CONNEALY COUNTDOWN
3J LADY

OPP X059 OF 53T
DMD SPICY GIRL L634R

BW: 64 ADJ WW: 766 DAM PROD: 2/107

CEW	BW	WW	YW	M	STAY	MARB	REA
+15	-3.2	+62	+103	+18	+14	+0.3	+0.35

Heifer Bull. This is one of the best bulls in the sale, point blank no questions asked. He's elite built, incredible in his muscle and rib cage, and phenomenal moving. On top of that he has arguably the best EPD profile in the sale. If his picture and genetics don't do it for you, nothing will. GET IN HERE!

58



DR JUNEAU 348L

TATTOO: 348L SA#: 756895 DOB: 3/22/23

5/8 SA 3/8 AN
BLACK
POLLED

ECR RESOURCE 702 OF 116Y
ECR JUNEAU 352J
OPP BLK LADY 53W OF 53S

AVS MR DEEDS 719D
DLB BB SCARLETT 037H
DLB GLDR FLOWER 758E

S A V RESOURCE 1441
OPP LADY PRIDE 116Y
JSR BARBADOS 720T
OPP BLACK LADY 53S
ECR BLACK BEAR 430B
DHD MANDY 008X
MJB GLADIATOR 305B
DLB NTRN SCARLETT 315A

BW: 64		ADJ WW: 814		DAM PROD: 2/107			
CED	BW	WW	YW	M	STAY	MARB	REA
+15	-0.1	+68	+103	+17	+12	+0.0	+0.73

Heifer Bull. 348L comes a little more moderate than some, but I love the feet and legs on this bull. He's set right in the angle of his shoulder and knee, which allows for a really forward reaching stride, plus he's long and correct in his hip placement and so his hock flexes very well. As a bonus he is tight sheathed and big testicled with added body depth.



KEYS FREDERIC 78J

TATTOO: 78J SA#: 746828 DOB: 3/2/21

7/8 SA 1/8 AN
RED
POLLED

RC BUCK 150B
SW FREDERIC 102F
SW MAGGIE 43Y

KEYS MONUMENT 234A
MISS KEY EMBER 61E
MISS KEY EMBER 3B

SW STEADY 50X
SW SAFRON 10X
BEAR SIR WYATT 227U
SW MAGGIE 82W
NJF FEISTS MASTERPEICE 7
MISS KEY GARNET 13S
KEYS DIRECT FIRE 18Y
*MISS KEY EMBER 3Z

CED	BW	WW	YW	M	STAY	MARB	REA
+14.5	-0.3	+46	+54	+16	+12	-0.1	+57

59



DR FREDERIC 63L

TATTOO: 63L SA#: 756396 DOB: 3/14/23

3/4 SA 1/4 AN
BLACK
HOMOZYGOUS POLLED

SW FREDERIC 102F
KEYS FREDERIC 78J
MISS KEY EMBER 61E

TSB MAVERICK 24C
MJB SALLY 158G
*MJB SUN GODDESS 122Y

RC BUCK 150B
SW MAGGIE 43Y
KEYS MONUMENT 234A
MISS KEY EMBER 3B
KEYS LONGSHOT 1Z
TSB HALIEY 3A
MAC F1 SUNDANCE 4S
ZBR MS BLK TOPAZ 007W

BW: 89		ADJ WW: 612		DAM PROD: 3/92			
CED	BW	WW	YW	M	STAY	MARB	REA
+14	-2.5	+50	+64	+14	+11	+0.1	+0.49

63L is moderate in his frame size but absolutely packed full of muscle and product. He is so big in his top and hip transitioning that down to his stifle and base width. He travels out of his front end well with a big forearm and foot size.

60



DR FREDERIC 58L

TATTOO: 58L SA#: 756392 DOB: 3/20/23

7/8 SA 1/8 AN
BLACK
HOMOZYGOUS POLLED

SW FREDERIC 102F
KEYS FREDERIC 78J
MISS KEY EMBER 61E

TSB MAVERICK 24C
MJB SALLY 126G
MJB PEPPER 123P

RC BUCK 150B
SW MAGGIE 43Y
KEYS MONUMENT 234A
MISS KEY EMBER 3B
KEYS LONGSHOT 1Z
TSB HALIEY 3A
TSB POLLED GRIZZLY 39M
*MJB MABELINE 1001L

BW: 84		ADJ WW: 665		DAM PROD: 3/103			
CED	BW	WW	YW	M	STAY	MARB	REA
+11	-1.3	+47	+71	+14	+11	+0.0	+0.62

58L is masculine and stout up front with a strong top and long, level hip. His extension is a bonus with good shape in his stifle. Sire is a paternal brother to the 2021 National Champion Bull at the National Western Stock Show.



The Game On Sons



Reference Sire



MJB GAME ON 354G

TATTOO: 354G SA#: 732635 DOB: 3/13/19

5/8 SA 3/8 AN
BLACK
POLLED

MAC QUARTERBACK 58Y
MJB MANNING 342C
*MJB BARBIE 120W

MJB VOYAGER 221W
MJB MS MOONSTONE 1127Z
MISS W CHALLENGER 27N

MAC F1 SUNDANCE 4S
WJM WILMA 120W
MJB BARBWIRE 260S
MISS W DATELINE 29L
OPP FRONTIER 771T
MISS W INDEPENDANCE 66N
W CHALLENGER 49L
MISS W TWISTER 57L

CED	BW	WW	YW	M	STAY	MARB	REA
+13.0	-1.0	+68	+100	+19	+14	+0.3	+51

MJB Game On 354G. This bull has a pedigree loaded with maternal strength. He is sired by our high marbling herdsire MJB Manning 342C who goes back to a Gold Dam, 120W. On the bottom side of Game On's pedigree is his dam 1127Z who traces back to some of our all-time great cows like 66N and 27N. 1127Z got things going with her very first heifer calf being a high seller and going on to be a donor for Weis Cattle in Iowa. Negative BW with WW, YW and Marbling in top 10%, Milk in top 30%.



61



DR GAME ON 36L

TATTOO: 36L SA#: 756372 DOB: 3/13/23

5/8 SA 1/4 AN 1/8 AR
BLACK
POLLED

MJB MANNING 342C
MJB GAME ON 354G
MJB MS MOONSTONE 1127Z

*DJF BORDER LINE 815A
MJB MS BORDERLINE 104G
MJB MS OVATION 121E

MAC QUARTERBACK 58Y
*MJB BARBIE 120W
MJB VOYAGER 221W
MISS W CHALLENGER 27N

C-BAR EVOLUTION 107Y
*STCY UNITY 815U
MJB ELWAY 322C
*MJB BARBIE 102X

CED	BW	WW	YW	M	STAY	MARB	REA
+15	-2.6	+63	+96	+18	+16	+0.3	+0.55

Heifer Bull. Love 36L's complete and fault free kind! He represents one that is so smooth all the way through because he ties his neck correctly up high, comes level down his top and square out his hip. This clean jointed, deep bodied bull is best appreciated from the profile with the way he balances nicely. **Retaining a 1/2 semen interest.**

62



DR GAME ON 79L

TATTOO: 79L SA#: 756410 DOB: 3/3/23

5/8 SA 3/8 AN
BLACK
POLLED

MJB MANNING 342C
MJB GAME ON 354G
 MJB MS MOONSTONE 1127Z

TSB MAVERICK 24C
MJB SALLY 122E
 *MJB YELLOW ROSE 121Y

MAC QUARTERBACK 58Y
 *MJB BARBIE 120W
 MJB VOYAGER 221W
 MISS W CHALLENGER 27N

KEYS LONGSHOT 1Z
 TSB HALIEY 3A
 *TSB TULSA 82W
 MJB MISS FIRESTORM 128U

BW: 83 ADJ WW: 674 DAM PROD: 4/101

CED	BW	WW	YW	M	STAY	MARB	REA
+15	-0.1	+61	+87	+18	+13	+0.3	+0.82

Heifer Bull. 79L is just so rugged. Everything about the bull is stout and dimensional. This masculine fronted bull is big topped and expressive in his rib cage being impressive from behind with how square and true he takes his width all the way to the ground.

64



DR MAGICIAN 15L

TATTOO: 15L SA#: 756331 DOB: 2/23/23

5/8 SA 3/8 AN
BLACK
HOMOZYGOUS POLLED

GGT SMOKESCREEN 213F
MJB MAGICIAN 306J
 MJB MS BORDERLINE 102G

MAC F1 ENDURO 43E
MJB GEMMA 169J
 MJB POCAHONTAS 114C

*GGT FINAL CHOICE 119B
 GGT MS MUSIC 126Z
 *DJF BORDER LINE 815A
 MJB MS KITTY 102E

CONNEALY COMRADE 1385
 MAC CARINA 176C
 MJB APACHE 241X
 MJB FOXY LADY 137A

BW: 88 ADJ WW: 724 DAM PROD: 1/116

CED	BW	WW	YW	M	STAY	MARB	REA
+13	+2.0	+79	+123	+20	+15	+0.0	+0.80

15L is really high performing and extended with added length of body and hip. He stays strong in his top from the side and has plenty of shape from behind but on the go is where he truly shines with added length of stride and freedom of movement.

63



DR GAME ON 34L

TATTOO: 34L SA#: 756370 DOB: 3/14/23

5/8 SA 3/8 AN
BLACK
POLLED

MJB MANNING 342C
MJB GAME ON 354G
 MJB MS MOONSTONE 1127Z

KEYS RETRIBUTION 18B
MJB ALBRIGHT 195G
 MJB YELLOW ROSE 162A

MAC QUARTERBACK 58Y
 *MJB BARBIE 120W
 MJB VOYAGER 221W
 MISS W CHALLENGER 27N

KEYS DIRECT FIRE 18Y
 MISS KEY KRISTIN 57Y
 *TSB TULSA 82W
 MJB MS SUNRISE 139W

BW: 96 ADJ WW: 610 DAM PROD: 3/96

CED	BW	WW	YW	M	STAY	MARB	REA
+10	+0.3	+66	+109	+16	+10	+0.3	+0.50

34L reads with plenty of rugged power having extra feature and bone without sacrificing any depth and length of body.

65



DR HEFTY 347L

TATTOO: 347L SA#: 756903 DOB: 3/22/23

5/8 AN 3/8 SA
HOMOZYGOUS BLACK
HOMOZYGOUS POLLED

CAN AM WEIGH UP 510
JSR HEFTY 0151H
 JSR MS SHOSHONE 362

OPP 1001Y OF 58W
DLB HD TABITHA 632D
 DLB PRMR TABITHA 758X

PLATTEMERE WEIGH UP K360
 CAN AM FOREVER LADY 024
 R C HI SHOSHONE 065
 JSR MS JAMACE 5241

HOOVER DAM
 OPP BLK LADY 58W OF 658S
 DLB PREMIERE
 AHF TABITHA 758T

BW: 72 ADJ WW: 807 DAM PROD: 2/106

CED	BW	WW	YW	M	STAY	MARB	REA
+13	-1.7	+62	+101	+24	+18	+0.3	+0.18

Heifer Bull. 347L is so impressive in the center part of his body! He has a big, bold forerib with a really deep heart and soft flank. This easy fleshing bull is big muscled and dense all the way through.





Our roots in the Salers business date back to when the likes of Prince and Slammer resided in the pastures outside Lodge Grass, Montana, through Frank Whitham of Whitham Salers of Kansas. The ranch began using Salers cattle in 1983 in the cow herd and saw what they could do for the operation. Salers cattle were incorporated into the performance testing roots of the Murry J. Brown and Son operation that dates back to the enrollment of Hereford bulls into Midland Bull Test in the 1960s. The ranch continues to be the longest continuous participant at Midland Bull Test today. We continue to emphasize the importance of performance testing and have added another level with the incorporation of DNA to increase the reliability of the Expected Progeny Differences (EPDs) we provide our customers.

The SimAngus Bulls



Welcome to the SimAngus portion of the sale, and what a set of bulls it is! On the top side these bulls are backed by what we believe to be as good of a SimAngus herd bull as we have seen. Several years back we bought one of the high sellers out of Triangle J's sale and have used him heavily. TJ Homerun 898H is a Franchise son with all the goods! His quality starts at the ground with big, square feet and awesome joints. His angles are exceptional and he gets out and travels as athletic as you can make one. His presence is eye catching and he balances a phenomenal rib and muscle pattern so correctly. He is a true breeding bull that translates these qualities into his progeny.

These five bulls are all sibs to our recent high sellers at the National Western Stock Show and backed by a tremendous set of cows. We've put extra emphasis on udder quality and fertility in these cattle and we believe full heartedly in what these cattle will do. This division is smaller in total numbers but can run with the best of them for quality in the cattle! Look in here!

Reference
Sire



TJ HOMERUN 898H

TATTOO: 898H ASA#: 3762426 DOB: 1/07/20

CCR COWBOY CUT 5048Z

TJ FRANCHISE 451D

TJ MISS NET WORTH U11

WLE UNO MAS X549

WELSH UNO MAS 314C

WELSH PRODUCT 9005A

TRIPLE C SINGLETARY S3H

CCR MS 4045 TIME 7322T

S A V NET WORTH 420

K&E MORNING PRIDE FAME99

CNS DREAM ON L186

SHAWNEE MISS 770P

1/2 SM 1/2 AN
HOMOZYGOUS BLACK
HOMOZYGOUS POLLED

CED	BW	WW	YW	M	STAY	MARB	REA	API	TI
+13	-0.1	+76	+121	+18	+10	+67	+10	+141	+87





CCD DOTTIE K07
HOMERUN DAUGHTER SOLD IN THE ONE AND ONLY
SIMMENTAL SALE, NATIONAL WESTERN STOCK
SHOW, DENVER, CO



LOT 66

66



CCD JUDGE 4L

TATTOO: 4L ASA#: 4321676 DOB: 3/23/23

1/2 SM 1/2 AN
HOMOZYGOUS BLACK
HOMOZYGOUS POLLED

TJ FRANCHISE 451D
TJ HOMERUN 898H
 WELSH UNO MAS 314C
 WLE UNO MAS X549
CCD EVER ENTENSE 832
 TLR EVERELDA ENTENSE H35

CCR COWBOY CUT 5048Z
 TJ MISS NET WORTH U11
 WLE UNO MAS X549
 WELSH PRODUCT 9005A
 CNS DREAM ON L186
 SHAWNEE MISS 770P
 BAIRDS DANNY BOY 501
 TLR EVERELDA ENTENSE F56

BW: 77 ADJ WW: 679 WR: 102

CED	BW	WW	YW	M	STAY	MARB	REA	API	TI
+15	-1.5	+68	+106	+18	+11	+5.7	+1.4	+139	+82

A crowd favorite with an elite level of balance and structure. His mother is a big centered, awesome udder and fantastically built cow who has done an outstanding job in our program. 4L is so good in the way he is made and put together. The lay and angle of his shoulder and set to his knee allows him to take a very forward reaching stride. This dimensional bull is soft and correct in the center part of his body with a world of quality and look from the side.



LOT 67

67



CCD JUDGE 5L

TATTOO: 5L ASA#: 4321677 DOB: 3/24/23

1/2 SM 1/2 AN
HOMOZYGOUS BLACK
HOMOZYGOUS POLLED

TJ FRANCHISE 451D
TJ HOMERUN 898H
 WELSH UNO MAS 314C
 WLE UNO MAS X549
CCD EVER ENTENSE 951
 TLR EVERELDA ENTENSE H35

CCR COWBOY CUT 5048Z
 TJ MISS NET WORTH U11
 WLE UNO MAS X549
 WELSH PRODUCT 9005A
 CNS DREAM ON L186
 SHAWNEE MISS 770P
 BAIRDS DANNY BOY 501
 TLR EVERELDA ENTENSE F56

BW: 81 ADJ WW: 631 WR: 95

CED	BW	WW	YW	M	STAY	MARB	REA	API	TI
+14	-1.2	+64	+99	+17	+11	+5.7	+1.5	+135	+79

Hard to make! 5L is so eye catching up front with a true herd bull presence and then comes back with an unreal amount of muscle and power. His rib cage and shape is incredible with a big, square pin set and he is so true all the way to the ground. Where he elevates further is how he can flat move on as sound a set of feet and legs as you can put in one! His mother is a beautifully made cow with a stacked maternal pedigree. Big time right here.



68



CCD JUDGE 6L

TATTOO: 6L ASA#: 4321678 DOB: 3/25/23

5/8 SM 3/8 AN
HOMOZYGOUS BLACK
HOMOZYGOUS POLLED

TJ FRANCHISE 451D
TJ HOMERUN 898H
WELSH UNO MAS 314C
CCD FLETCHER 1F
CCD PRESLEE A79
SVS PRESLEE C401

CCR COWBOY CUT 5048Z
TJ MISS NET WORTH U11
WLE UNO MAS X549
WELSH PRODUCT 9005A
CCR ANCHOR 9071B
W/C MISS WERNING 652D
MR HOC BROKER
JF SUNDANCE S1

BW: 84		ADJ WW: 644		WR: 97						
CED	BW	WW	YW	M	STAY	MARB	REA	API	TI	
+12	-0.3	+69	+104	+20	+10	+42	+37	+123	+77	



LOT 68

A more moderately framed bull that's so dense and good bodied. His pedigree traces back to a really well built, moderately framed dam with a beautiful udder design. He is awesome balanced with unreal proportions making him so intriguing from the side with an outstanding muscle pattern. His structure is next level good with the right angles and flex off of both ends. Extremely high quality individual!

GREAT GRANDDAM W/C MISS WERNING 652D



69



CCD JUDGE 7L

TATTOO: 7L ASA#: 4321679 DOB: 3/27/23

5/8 SM 3/8 AN
HOMOZYGOUS BLACK
HOMOZYGOUS POLLED

TJ FRANCHISE 451D
TJ HOMERUN 898H
WELSH UNO MAS 314C
CCD FLETCHER 1F
CCD MISS FLETCHER A54H
SISTER ACT DREAM D628

CCR COWBOY CUT 5048Z
TJ MISS NET WORTH U11
WLE UNO MAS X549
WELSH PRODUCT 9005A
CCR ANCHOR 9071B
W/C MISS WERNING 652D
WLE UNO MAS X549
FF MS DREAM W154

BW: 84		ADJ WW: 692		WR: 104						
CED	BW	WW	YW	M	STAY	MARB	REA	API	TI	
+12	-0.7	+71	+108	+20	+11	+51	+34	+132	+81	



LOT 69

Absolutely incredible individual! His pedigree is load on top and bottom tracing back to our foundation female, W/C Miss Werning 652D, who has consistently produced high sellers at the National Western Stock Show and even put a bull in stud at ABS. He has style and eye appeal to burn but balances it to a high level with a phenomenal muscle pattern and outstanding shape to his center body cavity. Where he really separates is his width and power from behind being so massive in his hip and stifle. Tight sheathed and big testicled. Outstanding herd sire prospect!

70



CCD JUDGE 8L

TATTOO: 8L ASA#: 4321680 DOB: 3/31/23

1/2 SM 1/2 AN
HOMOZYGOUS BLACK
HOMOZYGOUS POLLED

TJ FRANCHISE 451D
TJ HOMERUN 898H
WELSH UNO MAS 314C
WLE UNO MAS X549
SISTER ACT DREAM D628
FF MS DREAM W154

CCR COWBOY CUT 5048Z
TJ MISS NET WORTH U11
WLE UNO MAS X549
WELSH PRODUCT 9005A
CNS DREAM ON L186
SHAWNEE MISS 770P
CONNEALY REVENUE 7289
FF MISS TWIST S83

BW: 83		ADJ WW: 673		WR: 101						
CED	BW	WW	YW	M	STAY	MARB	REA	API	TI	
+13	-0.8	+68	+108	+20	+10	+60	+20	+136	+82	



LOT 69

Intriguing pieces here! 8L is the most out there one of the group. I read this one to make an immediate impact with that kind of front end extension and quality, muscle shape, and dominating done and feature. He puts together things that are very hard to combine into one skeleton. He'll inject added length and growth into a set of cows that need the extra go. His mother is arguably the most eye appealing younger cow we own with a set of back legs that'll get you fired up!



MJB *Spanish Lady* 178C



Within our cowherd, 178C is considered royalty. She is a centerpiece we have built around and to no surprise her mother, 264L, was one of the original foundation females at the ranch. Gold dam's are littered in this pedigree and the maternal cow power here is tremendous. Females within this line are exceptionally fertile and great uddered cattle that breed back quickly. Better yet, the mating flexibility in this lineage is unheard of. No matter the bull we have selected to breed or flush 178C to, they come out very high quality. 178C is much like her mother in that the progeny from these immortal females are excellent footed, eye appealing cattle with added power and substance.

The more you study our program, the more you'll see a plethora of herd bulls that trace back to these donors. The very first natural calf from 178C resulted in one of our rising stars, 311E. He was a high seller himself that has gone on to outproduce those that came before him and has become a staple in our AI program. We have been using him heavy on heifers and those cattle have come light and shaped perfectly for first calf heifers. You'll see we have selected a pair of 311E daughters to highlight the female portion of the sale.

Fertility in 178C is incredible. She consistently cranks out 10+ grade 1 embryos every time we flush her and the conception rate is 87% on her embryos. These are cattle that hit the ground good and never disappoint all the way through the production cycle. So circle around to these four females in this sale tracing back to 178C and you'll understand what fires us up so much! We have many in production and a whole bunch more ET calves hitting the ground now. She flat gets it done; these cattle are good!

Heifer Calves



LOT 72

72



DR LAUREL 113L

TATTOO: 113L SA#: 756281 DOB: 2/1/23

**3/4 SA 1/4 AN
BLACK
POLLED**

- NJF BOULDER 46B
- MJB DERRINGER 311E**
- *MJB SPANISH LADY 178C
- MJB VALIANT 373G
- MJB VALERI 151J**
- MJB PANACHE 154F
- NJF TOP LEVEL 41T
- NJF MISS MERCURY 292Z
- TSB CHAPARRAL 93Z
- MS W MASTERPIECE 264L
- MJB MANNING 342C
- MJB MS MAJESTY 124A
- GGT P BK EDELMAN 164D
- MJB YELLOW ROSE 153B

BW: 80		ADJ WW: 671		DAM PROD: 1/109			
CED	BW	WW	YW	M	STAY	MARB	REA
+15	-0.4	+60	+85	+17	+17	+0.1	+0.51

73



DR LAVINA 108L

TATTOO: 108L SA#: 756275 DOB: 1/26/23

**3/4 SA 1/4 AN
BLACK
POLLED**

- NJF BOULDER 46B
- MJB DERRINGER 311E**
- *MJB SPANISH LADY 178C
- MAC F1 FREEDOM 150F
- MJB BETSY 182J**
- MJB EMPRESS 125F
- NJF TOP LEVEL 41T
- NJF MISS MERCURY 292Z
- TSB CHAPARRAL 93Z
- MS W MASTERPIECE 264L
- CONNEALY COMRADE 1385
- *MAC AZURE 81A
- MJB GLADIATOR 305B
- MJB MS FIRESTORM 167Y

BW: 69		ADJ WW: 592		DAM PROD: 1/96			
CED	BW	WW	YW	M	STAY	MARB	REA
+15	-1.2	+59	+86	+19	+18	+0.1	+0.53

Want to make better cattle in one step?! Here she is. Her generating value gets my heart absolutely pumping. Huge bodied and massive muscled, but it all lays and fits like it's supposed to. Females that make a difference have to have out there pieces to move the needle and boy does she ever! She's unique to be that big legged and yet clean jointed and lady like up front. Big time cow prospect here!

If I had to pick one we shouldn't be selling, this is her. She is as elite as we can make them and may be the best high percentage heifer we have ever sold in the public market. Phenomenal look and quality from every angle, beautiful rib design and the most ideal muscle pattern. But her structure, that's what she does to a level that most cattle only dream of. This is an immediate donor prospect in any and every program.



LOT 73



74



DR LENNON 100L

TATTOO: 100L SA#: 756465 DOB: 2/28/23

PUREBRED
BLACK
POLLED

GGT P BULLETPROOF 901F
GGT SUBSTANCE 971H
GGT BELLA 249G

TSB CHAPARRAL 93Z
***MJB SPANISH LADY 178C**
MS W MASTERPIECE 264L

*GGT P BLK HEAVY HITTER
GGT P BK CHERUB 603E
GGT P BARRELHOUSE 223C
GGT P BK ZENITH 152D

ASH BUG 7U
TSB CAROLINE 11W
W MASTERPIECE 107D
MISS W BLK NUGGET 66E

BW: 86		ADJ WW: 677		DAM PROD: 10/102			
GED	BW	WW	YW	M	STAY	MARB	REA
+17	-1.6	+64	+91	+21	+21	-0.3	+0.53

100L is beautifully designed and well balanced from the side with a great shape to her head and neck and the right kind of muscle shape for her rib and body type. She has awesome angles off of both ends and tracks out so soundly.



75



DR LAYNIE 101L

TATTOO: 101L SA#: 756464 DOB: 3/3/23

PUREBRED
BLACK
POLLED

GGT P BULLETPROOF 901F
GGT SUBSTANCE 971H
GGT BELLA 249G

TSB CHAPARRAL 93Z
***MJB SPANISH LADY 178C**
MS W MASTERPIECE 264L

*GGT P BLK HEAVY HITTER
GGT P BK CHERUB 603E
GGT P BARRELHOUSE 223C
GGT P BK ZENITH 152D

ASH BUG 7U
TSB CAROLINE 11W
W MASTERPIECE 107D
MISS W BLK NUGGET 66E

BW: 76		ADJ WW: 655		DAM PROD: 10/102			
GED	BW	WW	YW	M	STAY	MARB	REA
+15	-0.9	+66	+91	+21	+20	-0.5	+1.03

101L is the stouter and more powerful sister who is bold and aggressive in her shape all over. Whichever one you choose, we know they'll take your program forward and make your cattle better!



76



DR LARAMIE 120L

TATTOO: 120L SA#: 756289 DOB: 3/17/23

5/8 SA 3/8 AN
BLACK
POLLED

GGT P BK BALBOA 53E
GGT P BK BALBOA 240G
GGT CONSENT 334Z

MJR CRUISER 41C
MJB MS JOURNEY 129E
MJB CORAL BELL 138Y

GGT GRANITE 210B
*GGT MS DESIGN 302Y
CONNEALY CONSENSUS 7229
GGT P BLK SUNRISE 1S

WARD Y108 RAINSTAR T202
MJR WHITNEY 18W
WILLEKES CONVERTER 4402-9
MISS W CHALLENGE 57M 133P

BW: 83		ADJ WW: 644		DAM PROD: 5/96			
CED	BW	WW	YW	M	STAY	MARB	REA
+11	+0.0	+57	+88	+17	+13	+0.2	+0.35



A Balboa daughter that has the goods! Man is this one absolutely incredible! If you looked through the bulls at all you saw how good Balboa's sire group is and we pulled this heifer right off the top of the females. She is awesome in the shape of her head and neck, blending so well into a bold rib and powering back to a massive hip. Her hind leg is incredible, and she plants with the athleticism that is so hard to find. To the surface she works with a big, square foot and is the kind to build a cowherd around!

77



DR LILY 156L

TATTOO: 156L SA#: 756264 DOB: 3/13/23

3/4 SA 1/4 AN
RED
POLLED

SW FREDERIC 102F
KEYS FREDERIC 78J
MISS KEY EMBER 61E

MJB SALUTE 263S
MJB MISS FIRESTORM 166A
*MJB BARBIE 120W

RC BUCK 150B
SW MAGGIE 43Y
KEYS MONUMENT 234A
MISS KEY EMBER 3B
5L DIRECT FIRE 1641-6443
MISS W CHALLENGER 42L
MJB BARBWIRE 260S
MISS W DATELINE 29L

BW: 83		ADJ WW: 620		DAM PROD: 7/98			
CED	BW	WW	YW	M	STAY	MARB	REA
+13	+0.2	+53	+73	+18	+14	+0.0	+0.48



DAM OF LOT 77

We were blessed with a handful of really good red females this year and decided it was important not to hoard them all. Sticking with the theme of influential cow families, we chose (156L) because she goes back to a powerhouse in the 166A cow. Talk about an impact! She's done everything we've asked and then some. Only because we are selling the best is this beautiful female for sale. She lines out so well balanced from the side with a fresh muscle shape on the 3/4 view. Her disposition is to die for, and her quality is high! Special female here.







Notes...

VITAFERM

PROFITABILITY AGAINST ALL



Inputs are high. Do more with less, and drive your profitability with VitaFerm®. VitaFerm is a line of nutritional supplements for beef cattle that maximize energy and forage utilization for successful production.

For more information, contact **BioZyme Area Sales Manager Justin Doubet** at **(816) 596-8795 ext. 2106** or visit **www.vitaferm.com**.





**DOUBET
RANCH**

**1309 State Hwy 345
Ranchester, WY 82839**

