



DOUBET RANCH
ANNUAL BULL SALE
04.01.2025

Greetings and welcome to our sale for 2025! What an amazing year it has been – record cattle prices, fire and drought all in the same year. I said it last year, and I'll say it again, these bulls will sire some of the most valuable calves to ever leave the ranch. Cow inventory numbers continue to be down, heifer retention has yet to take hold and increased demand continues for the preferred protein by the consumer. What an exciting time in the cattle business!

We believe these cattle, and the Optimizer Salers x Angus cross is more right for the beef industry than at any time in history. Our customers, new and old, continue to share with us the great results they are having with our genetics and what it has meant to them on their own ranches. The fertility and breed up is second to none. When calf prices are this high, the dollars really add up to get them bred, have a live, unassisted birth, with a calf that gets up quickly and nurses. Every calf sold this fall will approach \$2000 and beyond I'm told by a cattle buyer friend. As the beef industry builds the cow herd numbers back, I can't stress enough the opportunities to fix some of the things in the cow herd and begin to take advantage of the Optimizer contribution to profitability on your operation.

All of the bulls are guaranteed to be breeders. If you have any issues, just give us a call and we can discuss your options. We'll be happy when you are happy. Every bull has DNA submitted for Genomic-Enhanced EPDs. We are committed to making the data as relevant and as accurate as we can.



The list of people to thank that make this happen is long and we couldn't do it without them. There are many in the day to day business transactions that it is a pleasure to do business with. A special thanks to all of the family that is quick to jump in on any task and get it all done. A team of people working towards a similar goal can accomplish an amazing amount. We have an amazing team and are very proud of their contribution. If you have any questions, don't hesitate to contact any one of them.

We are so blessed to have a tremendous set of customers that we consider friends. The satisfaction we get from your successes with our cattle make those long hours a true joy. There is nothing else we would rather do. Getting those texts or photos of impressive cows and calves that are results of our genetics and the texts with the fantastic results from you are getting are really appreciated.

Sight Unseen Purchases – Each year we have customers that can't be at the sale and we work with them to find the right cattle for them. With a family full of practical livestock judges and evaluators, (I tell people I live with a bunch of critics!) I have the utmost confidence we can find the cattle you are after. Whether you need 1 or 30, we have helped customers just like you, become satisfied sight unseen customers. Just call myself or any of the family and we will get you taken care of.

Again, it's been a pleasure doing business with so many of you over the years. For those of you that are new customers, we look forward to many more years. If you have any questions on any of the bulls shown in the catalog, or any of the information provided, feel free to give us a call.

*Thanks again.
Jim*



Doubet Ranch
SALE SCHEDULE

MONDAY MARCH 31ST

2 PM - Bulls will be available for viewing

Billings Livestock Commission

4 PM - Cocktail Hour

TUESDAY APRIL 1ST

10 AM - Bulls will be available for viewing

Noon - Lunch

1 PM - Sale Begins

JIM & SHERRY DOUBET • (303) 638-2625 • JTDOUBET@GMAIL.COM • DOUBETRANCH.COM



Doubet Ranch ANNUAL BULL SALE

OFFERING A SELECT GROUP OF 60 OPTIMIZER BULLS

SALE DAY PHONES

Jim Doubet (303) 638-2625
Curtis Doubet (303) 681-7086
Cody Doubet (720) 346-8894
Justin Doubet (720) 320-3291
Dan Diechmann (406) 799-5200

SALE LOCATION

Billings Livestock Commission
2443 N Frontage Rd
Billings, MT 59101
(406) 245-4151

AUCTIONEER

Ty Thompson (406) 698-4783

SALE REPRESENTATIVES

John Goggins – Western Ag Reporter (406) 698-4159
Devin Murnin – Western Livestock Journal (406) 696-1502
Dean Pike – American Salers Association (303) 810-7605

ACCOMMODATIONS

Holiday Inn Express
430 Cole St, Lockwood, MT 59101
(406) 259-8600

VIDEOS

Videos of the bulls can be found at **DOUBETRANCH.COM**
+ **DVAuction.com**

ONLINE BIDDING

Sale will be hosted online with DVAuction.

DVAuction
Broadcasting Real-Time Auctions

DELIVERY

We do our best to deliver the bulls direct to your bull pen gate as part of the purchase price. In the event that delivery is greater than 600 miles, we will work with you to keep this cost to a minimum.

VOLUME DISCOUNTS

Volume Discounts are available on purchases of 5 bulls or more.

HEALTH

All bulls have been vaccinated with Merck Animal Health products. They were given Nasalgen 3 PMH, Cavalry 9, Vista Once/Vision 7 Somnus and Safe-guard dewormer. They will have passed a semen test prior to delivery to your ranch and have been BVD PI tested negative. All bulls will receive health papers for interstate shipment as needed.

GUARANTEE

All bulls sell with a first breeding season guarantee. It is rare that there are problems, but in the case there is an issue, a suitable substitute bull or credit towards next year's purchase will be worked out with the buyer.

SIGHT UN-SEEN

If you are interested in buying bulls but can't make it to the sale, you can buy with our Sight Unseen Guarantee. Give Jim a call or contact Curtis (303) 681-7086, Cody (720-346-8894, Justin (720) 320-3291 or Dan (406) 799-5200, and we'll be glad to get the bulls that meet your needs. We have had customers buy from 1-30 bulls on order with us and have customers for over 10 years that have never been in the bull pen. We'll guarantee you'll like the bulls when they get to your place or we'll take them back.



EPD EXPLANATIONS

Calving Ease Direct (CED), is expressed as a difference in percentage of unassisted births, with a higher value indicating greater calving ease in first-calf heifers. It predicts the average difference in ease with which a sire's calves will be born when he is bred to first-calf heifers.

Birth Weight EPD (BW), expressed in pounds, is a predictor of a sire's ability to transmit birth weight to his progeny compared to that of other sires.

Weaning Weight EPD (WW), expressed in pounds, is a predictor of a sire's ability to transmit weaning growth to his progeny compared to that of other sires.

Yearling Weight EPD (YW), expressed in pounds, is a predictor of a sire's ability to transmit yearling growth to his progeny compared to that of other sires.

Maternal Milk EPD (Milk), is a predictor of a sire's genetic merit for milk and mothering ability as expressed in his daughters compared to daughters of other sires. In other words, it is that part of a calf's weaning weight attributed to milk and mothering ability.

Stayability (STAY), Predicts the probability of a bull's daughters remaining productive until at least six years of age.

Marbling EPD (Marb), expressed as a fraction of the difference in USDA marbling score of a sire's progeny compared to progeny of other sires.

Ribeye Area EPD (RE), expressed in square inches, is a predictor of the difference in ribeye area of a sire's progeny compared to progeny of other sires.

2024 Non Parent EPD Averages	CED	BW	WW	YW	M	STAY	MARB	REA
	12.6	-0.4	59	87	18	15	0.1	0.60

ASA GOLD SIRE & DAM



The ASA Gold Sire and Dam program recognizes Salers breeders' top producing cows within a herd based on number of calves weaned per cow exposed and weaning weight of calves. Cows and sires can be recognized from any environment because the list is based on within herd performance.

- Gold Dams must have had a calf before they are 2.3 years of age and calve within a 395 day calving interval which allows the producers to calve heifers earlier than the main cow herd.
- Dam's must have a minimum of three natural (non-ET) calves with an average weaning ratio greater than 105.
- These are the top quality most efficient cows in a herd. Only 2% of the registered cows make the Golden Dam list.

Gold Sires - Salers bulls can earn the title of Gold Sires by siring five or more Gold Dams.

Gold dams and Sires can be identified in Salers pedigrees by an (*) behind each name in the pedigree.

GENOMIC ENHANCED EPDs



Doubet Ranch participated in the American Salers Association Cow Herd Genomic Project. We did our best to gather a tissue sample on every active cow and herd bull in our operation. Those DNA samples, along with every calf crop since, have been sent in for testing through the International Genetic Solutions group to help provide the most predictable EPDs to our commercial producers and ourselves in breeding future seedstock. In addition to genotypes the bulls in this catalog have been tested for parentage, color status, and polled status. This tool is a supplement to our very important production traits such as fertility, calving ease, mothering ability, grazing ability, and trailing ability to name a few.

The Estimated Progeny Equivalent chart below give you some indication regarding what Genomic Enhanced EPDs can mean to you when purchasing a bull who has not yet had offspring.

Estimated Progeny Equivalents is the average number of progeny records it would take to see an equivalent change in accuracy from a genomic DNA test. For example, if a non-parent animal is genotyped, the accuracy of his/her EPD is akin to an animal that has already produced 25 offspring with a weaning weight record (see table below). Overtime, these estimates will change as statistical models are improved, the number of phenotypes increases, and the information from genomic data improves.

<i>Trait</i>	<i>CED</i>	<i>CEM</i>	<i>BW</i>	<i>WW</i>	<i>YW</i>	<i>Milk</i>	<i>STAY</i>	<i>DOC</i>	<i>CW</i>	<i>MARB</i>	<i>RE</i>
Estimated Progeny Equivalents	25+	4	22	25+	25+	19	15	25+	5	8	6

DVAuction
Broadcasting Real-Time Auctions

Never Miss An Auction Again!
Watch & Bid online for FREE!

**Visit www.DVAuction.com
and Register Today!**

For General Questions Please Contact Our Office:
(402) 316-5460 or support@dvauction.com



WHY OPTIMIZER?

MAXIMIZING THE ANGUS & SALERS STRENGTHS TOGETHER WITH THE OPTIMIZER

TRAIT	ANGUS	SALERS	OPTIMIZER
CALVING EASE	✓✓	✓	✓✓
CALF VIGOR	✓	✓✓	✓✓
UDDER QUALITY	✓✓	✓	✓✓
RANGE UTILIZATION	✓	✓✓	✓✓
LONGEVITY	✓	✓✓	✓✓
MARBLING	✓✓	✓	✓✓

Drastic Improvement In The Lowly Heritable Traits Like Fertility

Our current customers see major fertility improvements with our bulls as one operation running 1250 straightbred commercial cows was getting right at an 86% breed up pretty consistently. They began using our Optimizer bulls and saw this improve to 95% almost overnight for an additional 112 calves which could impact the bottomline as high as \$225,000 this fall.

INCREASE IN MATERNAL HETEROSIS

Trait	%Advantage
Calving Rate	3.7% ↑
Individual Weaning Weight	3.8% ↑
#of Calves in Lifetime	17% ↑
Longevity	38% ↑
Lbs of Calf Weaning Wt for the Lifetime of the Cow	25.3% ↑



WHY OPTIMIZER?



No Complicated Crossbreeding Program

Use a Doubet Ranch Optimizer bull on an Optimizer cow and reap the benefits of producing fantastic progeny!

Improved Longevity

Doubet bred Optimizer cows consistently stay in production well past 10 years of age and often as long as 14 plus years. Their ability to breed back quickly year after year is unmatched and the feet and udders stay as good as you'll find.

As a buyer, a feeder, and a breeder who has continually used, selected, purchased and marketed Salers cattle since 1984 I can offer this...

The Optimizer cross has worked consistently in any environment, pasture condition, and feedyard that we've placed cattle in. With over forty years in the marketing business, we continually see the need and usefulness of a cross among straight black or red Angus herds. The advantage of the Optimizer is the versatility of the Salers breed. You get mothering ability, fertility, rock solid hoof structure and soundness attributes in the females, and the performance, grade and yield of the cattle in the feedlot all combine to make the ideal cross for the feeding industry. Top it off with the excellent disposition of the breed.

We highly recommend the Doubet's bulls and back this program with our marketing network, buying Salers Optimizer feeders and females. Plan now to attend their sale. Let your program profit from it. If you need assistance, please call on us to talk about this very elite bull offering. We guarantee our sight unseen purchases 100%. See you at the Doubet Sale, April 1st!.

Sincerely,
Dan Deichmann



406-423-5500 • 406-799-5200
P.O. Box 310 • Hobson, MT 59452



1

**DR GOLD NUGGET 88M**

TATTOO: 88M SA#: 762037 DOB: 3/2/24

HOMOZYGOUS BLACK
HOMOZYGOUS POLLED
 3/4 SA 1/4 AN

 MJB GOLD STANDARD 304H
MJB KRUGERRAND 379K
 MJB GEMMA 108H

 TSB CHAPARRAL 93Z
***MJB SPANISH LADY 178C**
 MS W MASTERPIECE 264L

 ECR INVESTMENT 822F
 *MJB EMPRESS 125F
 MAC F1 ENDURO 43E
 MJB YELLOW ROSE 120B
 ASH BUG 7U
 TSB CAROLINE 11W
 W MASTERPIECE 107D
 MISS W BLK NUGGET 66E

BW ET	ADJ WW 701	WR 100	DAM PROD 18/102				
CED	BW	WW	YW	M	STAY	MARB	REA
14.4	-1.7	59	77	21	20	0	0.58

2

**DR BLACK GOLD 89M**

TATTOO: 89M SA#: 762038 DOB: 3/8/24

HOMOZYGOUS BLACK
HOMOZYGOUS POLLED
 3/4 SA 1/4 AN

 MJB GOLD STANDARD 304H
MJB KRUGERRAND 379K
 MJB GEMMA 108H

 TSB CHAPARRAL 93Z
***MJB SPANISH LADY 178C**
 MS W MASTERPIECE 264L

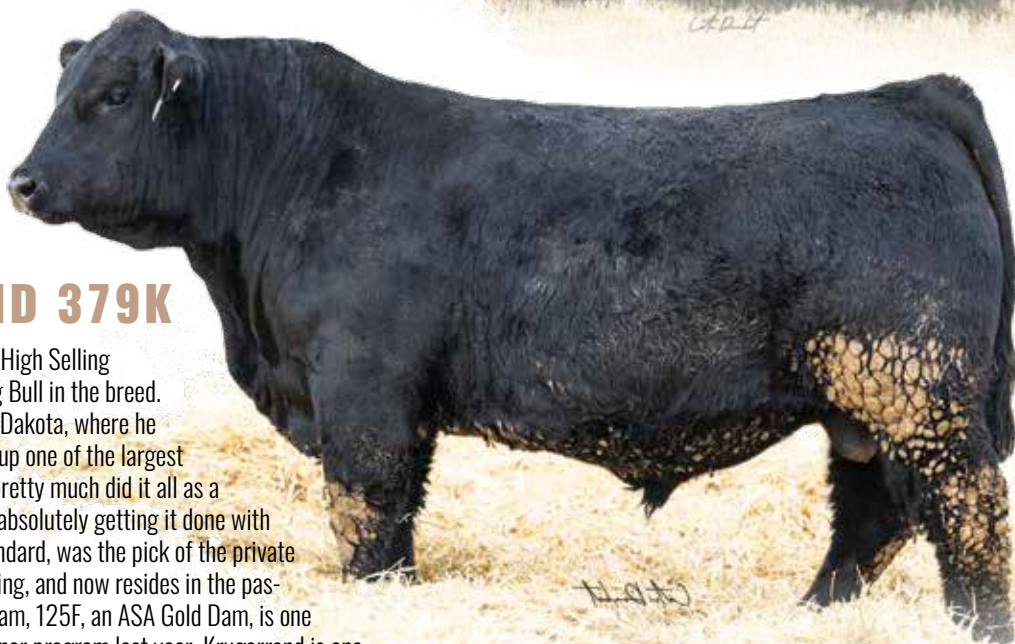
 ECR INVESTMENT 822F
 *MJB EMPRESS 125F
 MAC F1 ENDURO 43E
 MJB YELLOW ROSE 120B
 ASH BUG 7U
 TSB CAROLINE 11W
 W MASTERPIECE 107D
 MISS W BLK NUGGET 66E

BW ET	ADJ WW 701	WR 100	DAM PROD 18/102				
CED	BW	WW	YW	M	STAY	MARB	REA
15.1	-0.6	58	80	21	22	-0.1	0.63

We believe these two full sibs to be as good of a pair of ET flush brothers as we have ever made. If you have followed our program at all, the 178C Spanish Lady cow will go down in history as quite possibly our most influential cow to date and she has been so fun to own and utilize. The mating versatility she offers is unreal and she makes them good no matter how we breed her. So, we knew there was a very good probability that taking her to our 2023 high selling bull MJB Krugerrand 379K would be exciting and boy did she ever deliver!

MJB Spanish Lady 178C**MJB KRUGERRAND 379K**

MJB Krugerrand 379K was the High Selling Bull at our 2023 Sale and the high Selling Bull in the breed. Purchased by MacDonald Ranches, North Dakota, where he is doing a tremendous job for them lining up one of the largest sire groups ever offered in their sale. He pretty much did it all as a yearling bull and we are seeing that he is absolutely getting it done with the progeny in our sale. His sire, Gold Standard, was the pick of the private treaty pen by Jim Wilson, V Ranch, Wyoming, and now resides in the pastures at GGT in Kansas. Gold Standard's dam, 125F, an ASA Gold Dam, is one of our model cows that we put into our donor program last year. Krugerrand is one of those bulls that you spend 40 years in the business making matings, using only the best bulls you can breed and find, culling hard and having the stars align. He has several progeny in the sale that are Elite in their quality and loaded with maternal. EPDs are negative BW, top 30% CED, top 10% for WW, Top 20% for YW, Top 25% for Marbling and Top 5% for Stayability.





The bulls themselves are right for the times. Modern and correct in their frame size with herd bull presence. Their quality starts at the ground with big, square feet and man are they ever athletic and sound on the move! So much flex and give off of both ends, it's a pleasure to watch them circle the pen. But boy are they ever stout and dense! So much rib and body with a powerful muscle pattern that balances from end to end. These bulls are proportionate and eye appealing no matter the angle you study them from. Both bulls are tight sheathed and big testicled with plenty of length and levelness. These are high quality herd bull prospects with immense breeding value. They are everything we could have ever asked for and then some! Retaining the right to half semen interest in both bulls. **Heifer Bulls.**





3



DR BULLION 2M

TATTOO: 2M SA#: 761979 DOB: 1/29/24

**HOMOZYGOUS BLACK
HOMOZYGOUS POLLED**
1/2 SA 1/2 AN

MJB GOLD STANDARD 304H

MJB KRUGERRAND 379K

MJB GEMMA 108H

MAC F1 FREEDOM 150F

***MJB BETSY 172K**

MJB MISS FIRESTORM 166A

ECR INVESTMENT 822F

*MJB EMPRESS 125F

MAC F1 ENDURO 43E

MJB YELLOW ROSE 120B

CONNEALY COMRADE 1385

*MAC AZURE 81A

MJB SALUTE 263S

*MJB BARBIE 120W



BW 84 ADJ WW 703 WR 109 DAM PROD 1/109

CED	BW	WW	YW	M	STAY	MARB	REA
11.8	0.1	63	92	22	15	0.3	0.18

2M puts a lot of good together and is a definite sale feature! 84 lb birth to a 703lb wwt, the bull is tremendous on calving ease and birthweight. He's out of a good young cow that proved herself with a 109 weaning index and man, he is something! These Krugerrand cattle are so consistent in terms of their length of body performance, power and rib cage. This bull is extra tight sheathed and big testicled. He's phenomenally good balanced and so attractive from the profile but step around and see his rear view and you'll note how clean jointed and square he is all the way to the ground. Really like him!

4



DR BULLION 83M

TATTOO: 83M SA#: 762030 DOB: 2/24/24

**HOMOZYGOUS BLACK
HOMOZYGOUS POLLED**
5/8 SA 3/8 AN

MJB GOLD STANDARD 304H

MJB KRUGERRAND 379K

MJB GEMMA 108H

TSB MAVERICK 24C

***MJB SALLY 157E**

MJB MISS FIRESTORM 156A

ECR INVESTMENT 822F

*MJB EMPRESS 125F

MAC F1 ENDURO 43E

MJB YELLOW ROSE 120B

KEYS LONGSHOT 1Z

TSB HALIEY 3A

MJB SALUTE 263S

*MJB YELLOW ROSE 102Y



BW 84 ADJ WW 718 WR 109 DAM PROD 5/108

CED	BW	WW	YW	M	STAY	MARB	REA
14	-0.6	72	108	19	19	0.3	0.4

Mother is a Gold Dam. 83M is one of the definite sale features and one we have to highlight. Just flip through the catalog and study what he does on paper with 718lb wwt that started light at birth with a tremendous CED. He's backed by the MJB Sally 157E cow who has weaned 5 at 108 and man what a unique genetic opportunity here. Add in he does what Krugerrand does so well with a rugged, masculine power and that added length of body. He is incredible structured and one of the very top bulls in the sale. This is one you want.



A true herd bull prospect! Probably as sound structured and as good built as any of them being flawless on his feet and legs with so much flex and comfort to his hock and pastern. He's so smooth shouldered, masculine and stylish with tremendous rib. 57M is big pinned and massive stifled with a genuine herd changing look about him. His mother has solidified herself in our cowherd as a top 5 cow with a fantastic udder and we are flushing her. No matter the mating or the sex of the calf, she has made top end cattle for us year after year.

5

5



DR BULLION 57M

TATTOO: 57M SA#: 762003 DOB: 2/26/24

BLACK
HOMOZYGOUS POLLED
1/2 SA 1/2 AN

MRB GOLD STANDARD 304H
MRB KRUGERRAND 379K
MRB GEMMA 108H

ECR INVESTMENT 822F
*MRB EMPRESS 125F
MAC F1 ENDURO 43E
MRB YELLOW ROSE 120B
MAC QUARTERBACK 58Y
*MRB BARBIE 120W
TSB MAVERICK 24C
MRB FIREFLY 173S



MRB MANNING 342C
MRB VALERIE 110G
MRB SALLY 135E

BW 95 ADJ WW 687 WR 104 DAM PROD 4/101

CED	BW	WW	YW	M	STAY	MARB	REA
7.6	1.1	66	95	18	16	0.2	0.89

6



DR BULLION 6M

TATTOO: 6M SA#: 762016 DOB: 2/3/24

HOMOZYGOUS BLACK
HOMOZYGOUS POLLED
1/2 SA 1/2 AN

MRB GOLD STANDARD 304H
MRB KRUGERRAND 379K
MRB GEMMA 108H



MRB GLADIATOR 324H
MRB CLEOPATRA 194K
MRB MELANIA 142H

ECR INVESTMENT 822F
*MRB EMPRESS 125F
MAC F1 ENDURO 43E
MRB YELLOW ROSE 120B
MRB GLADIATOR 305B
MRB CHEERS 172C
ECR INVESTMENT 822F
*MRB TOPAZ 144E

BW 94 ADJ WW 678 WR 105 DAM PROD 1/105

CED	BW	WW	YW	M	STAY	MARB	REA
10.1	-0.6	61	99	22	24	0.2	0.4

6M is a homozygous black, homozygous polled Krugerrand son and boy is he sure easy to find and admire. He offers a world of visual performance with extra length of body and length of hip. He is extremely big testicled, deep bodied and strong topped being long from hooks to pins and correct in the way that he sets down off of his rear two.



6



7



DR BULLION 6oM

HOMOZYGOUS BLACK
HOMOZYGOUS POLLED
1/2 SA 3/8 AN
1/8 AR

TATTOO: 60M SA#: 762007 DOB: 2/23/24

MRB GOLD STANDARD 304H

MRB KRUGERRAND 379K

MRB GEMMA 108H



KEYS RETRIBUTION 18B

MRB LORETTA 172G

MRB MISS FIRESTORM 175A

ECR INVESTMENT 822F

*MRB EMPRESS 125F

MAC F1 ENDURO 43E

MRB YELLOW ROSE 120B

KEYS DIRECT FIRE 18Y

MISS KEY KRISTIN 57Y

MRB SALUTE 263S

MRB MS PRISTINE 103W

BW 83 ADJ WW 597 WR 90 DAM PROD 4/92

CED	BW	WW	YW	M	STAY	MARB	REA
14.5	-1.8	55	80	16	18	0.3	0.43

Heifer Bull. This homozygous black, homozygous polled Krugerrand son is a heifer bull deluxe with a tremendous CED and BW. Visually, we feel like he reinforces that being so smooth shouldered, good jointed, and level hipped. He's a sleep all night heifer bull that does a lot of really nice things.

8



DR KRUGERRAND 9oM

HOMOZYGOUS BLACK
HOMOZYGOUS POLLED
1/2 SA 1/2 AN

TATTOO: 90M SA#: 762410 DOB: 1/29/24

MRB GOLD STANDARD 304H

MRB KRUGERRAND 379K

MRB GEMMA 108H



MRB VELOCITY 414E

DLB VEL SHAMROCK 243K

DLB 3J SHAMROCK 944G

ECR INVESTMENT 822F

*MRB EMPRESS 125F

MAC F1 ENDURO 43E

MRB YELLOW ROSE 120B

KEYS RETRIBUTION 18B

MRB MARY 134C

3J REDWATER 14B

DLB FP KRISTEN 605D

BW 74 ADJ WW 719 WR 101 DAM PROD 1/101

CED	BW	WW	YW	M	STAY	MARB	REA
14.9	-3.2	58	85	16	21	0.5	0.35

Heifer Bull. 90M is a low birth weight bull that is good in his rib shape, wide and muscular with big testicles.

Thank You to Yellowstone Feeders

Kristin Ketterling, in charge of the Processing Crew at Yellowstone Feeders where the bulls have been fed the last 2 years, "I just love working your bulls. They just walk into the chute and down the alleyway. They are a real joy to work." A special thanks to the Bill and the entire crew at Yellowstone Feeders. They have been great to work with.





9



DR JAG 33M

**BLACK
POLLED**
5/8 SA 3/8 AN

TATT00: 33M SA#: 761982 DOB: 3/13/24

MJB JAG 340J

MJB GAME ON 354G

MJB DIAMOND 155D

MAC F1 SUNDANCE 4S

***MJB SUN GODDESS 122Y**

ZBR MS BLK TOPAZ 007W

MJB MANNING 342C
MJB MS MOONSTONE 1127Z
NJF BOULDER 46B
MJB YELLOW ROSE 189A
RITO 112 OF 2536 RITO 616
MAC BLACK FLORA 6F
KFI RENEGADE
KIM MAC BLACKBIRD 1087



BW 86 ADJ WW 711 WR 108 DAM PROD 14/105

CED	BW	WW	YW	M	STAY	MARB	REA
12.2	-0.3	58	82	21	11	0.2	0.67

Mother is a Gold Dam. The last natural calf out of our infamous 122Y donor and a legacy she leaves behind! 14 calves at 105 and she leaves us with this outstanding individual. Weaned at 711, he's got a 12.3.CED and negative BW but come see this one in person. He's everything you'd expect 122Y to produce. He has so much look and presence to his front one third. His muscle pattern is explosive being incredibly true and bold in his rib shape. The bull handles himself very athletic when he gets out and goes with so much power and shape in a sound structured package. Get in on the last chance here! He is extremely good.





The first Independence son to sell and we are pumped! He is homozygous black and homozygous polled and boy does he do a lot of things right. His mother, the 172C cow, is a very proven producer with 7 at 102 and he puts together everything his sire and dam have to offer being huge bodied and big centered with extra fleshing ability and muscle but still ties it all up so proportionately and well balanced. He's an attractive bull I think can go breed cows and come back from breeding in excellent shape.



10



DR INDEPENDENCE 54M

**HOMOZYGOUS BLACK
HOMOZYGOUS POLLED**
1/2 SA 1/2 AN

TATTOO: 54M SA#: 762000 DOB: 2/26/24

MAC F1 FREEDOM 150F
MRB INDEPENDENCE 318K
MRB FOXY LADY 105Z

CONNELLY COMRADE 1385
*MAC AZURE 81A
GGT END RUN 240X
MRB MS LAVENDER 115W
GGT END RUN 240X
*MRB PRISTINE 106X
M A R MIDLAND EMPIRE 3092
MRB GRIZZLY ROSE 124R

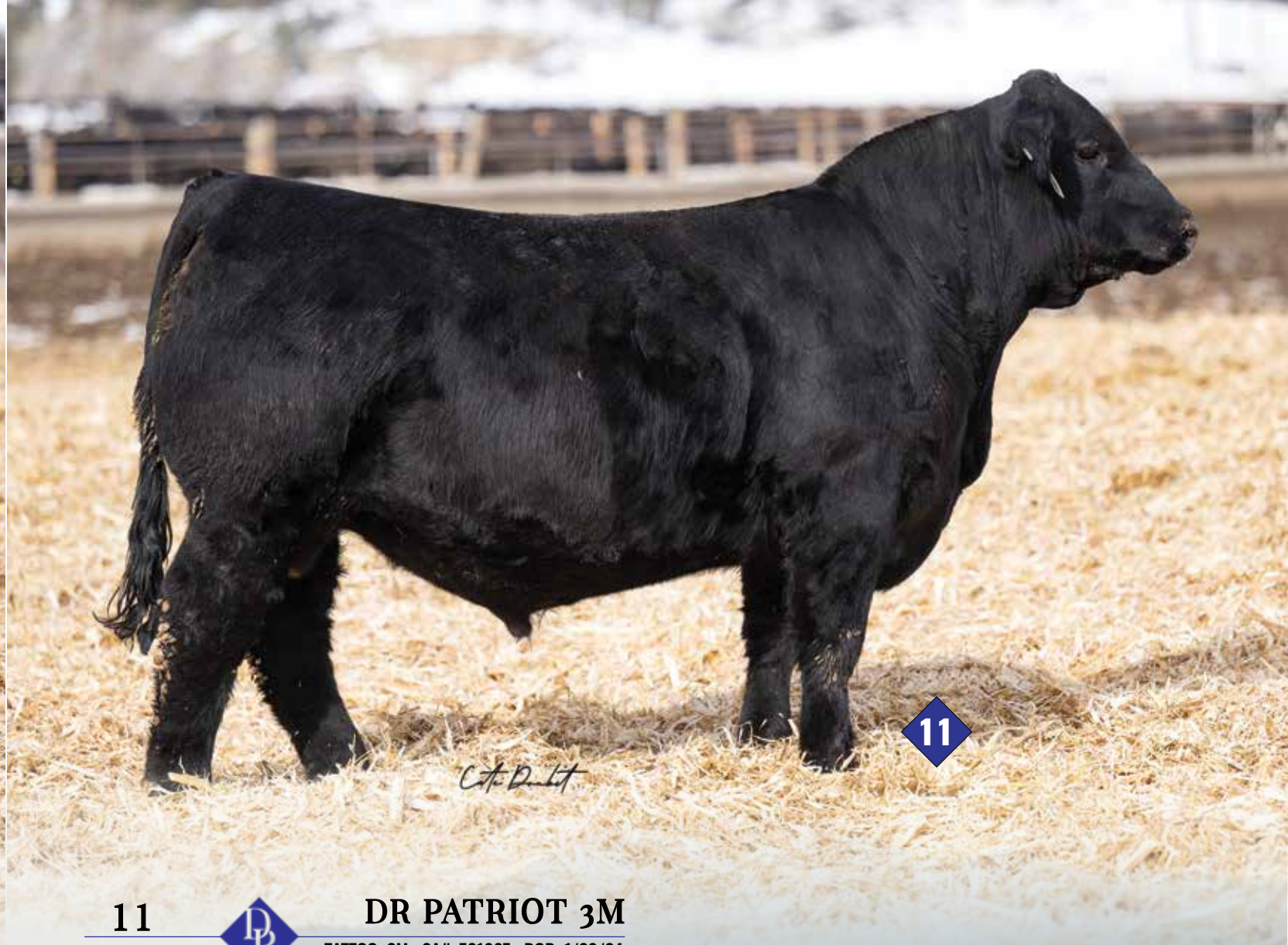


MRB TOUCHDOWN 209A
MRB CHEERS 172C
MRB ROYALTY 102T

BW 98 ADJ WW 633 WR 96 DAM PROD 7/102

CED	BW	WW	YW	M	STAY	MARB	REA
10.1	0.5	55	80	22	16	0.4	0.43

MRB INDEPENDENCE 318K
Sire of Lot 10



11

C. D. L.

11



DR PATRIOT 3M

HOMOZYGOUS BLACK
HOMOZYGOUS POLLED
5/8 SA 3/8 AN

TATTOO: 3M SA#: 761987 DOB: 1/28/24

MAC F1 FREEDOM 150F

MRB PATRIOT 342H

MRB DIAMOND 140F

CONNEALY COMRADE 1385

*MAC AZURE 81A

NJF BOULDER 46B

MRB DAKOTA 152C

*GGT FINAL CHOICE 119B

GGT MS MUSIC 126Z

MRB TOUCHDOWN 209A

MRB MS SUNRISE 164W

GGT SMOKE SCREEN 213F

MRB SHADOW 162K

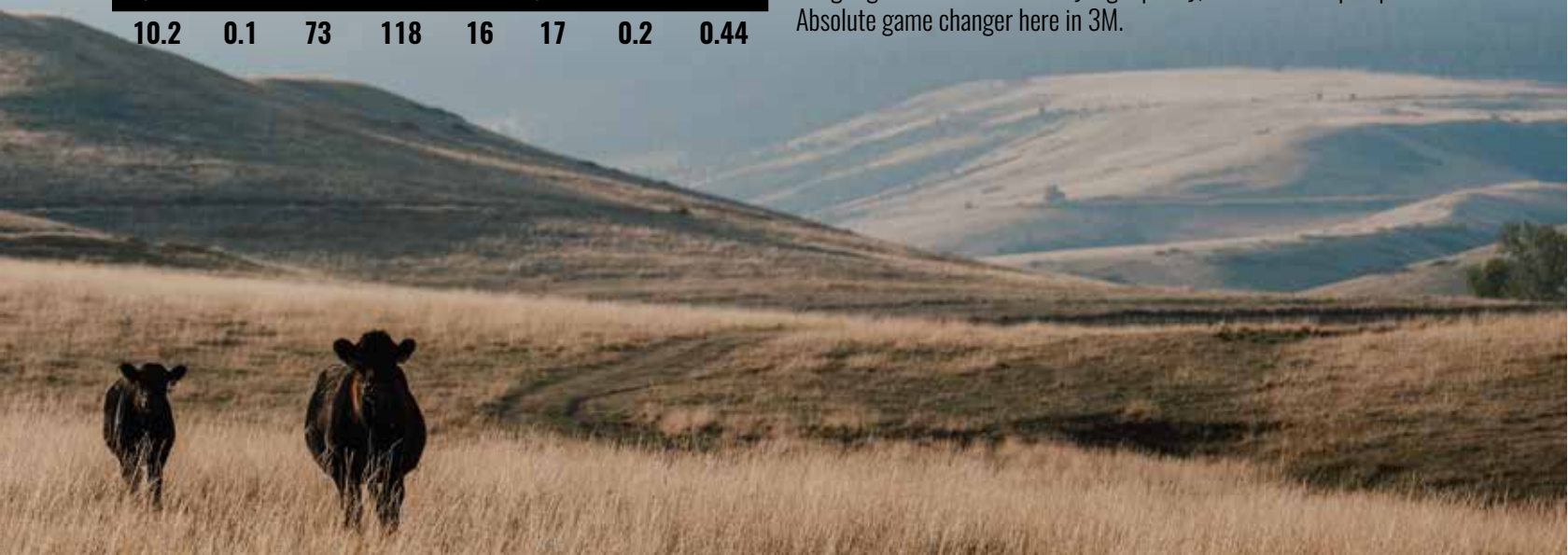
MRB CHEERS 211D



BW 81 ADJ WW 641 WR 99 DAM PROD 1/99

CED	BW	WW	YW	M	STAY	MARB	REA
10.2	0.1	73	118	16	17	0.2	0.44

This bull has been an absolute standout since birth. His presence, power and mass combined into that attractive of a package is something that we are striving to do. He is as rugged and stout as you need one with a huge top and massive pin set pushed up by the fact he is so bold in his forerib. 3M has so much width and power across his stifle and with added feature and bone yet at the same time, the bull is extra clean and stylish up front while being really tight and correct in his sheath. His proportions and balance from the side is unrivaled. He's out of a first calf heifer that's making her place established right from the get go. This is an extremely high quality, true herd bull prospect. Absolute game changer here in 3M.





MJB PATRIOT 342H

MJB Patriot 342H is bred to be great. Sired by MAC F1 Freedom 150F from MacDonald Ranches and out of the tremendous 140F cow – the red version of 125F, dam of Gold Standard. The same year Jim Wilson bought Gold Standard, Dan Deichmann bought Patriot. They still have an ongoing discussion about who got the better bull. Patriot daughters are just like the Gold Standard daughters – beautiful, productive, feminine females with really attractive udders. You'll want a pasture full of them. Now owned with Parke Ranch, Montana. His EPDs are below breed average for BW, Top 20% for WW and Top 10% for YW with a +20 Milk EPD.



12



DR PATRIOT 4M

BLACK
HOMOZYGOUS POLLED
5/8 SA 3/8 AN

MAC F1 FREEDOM 150F
MJB PATRIOT 342H
MJB DIAMOND 140F



GGT SMOKE SCREEN 213F
MJB SHADOW 117K
MJB MARY 134C

TATTOO: 4M SA#: 761996 DOB: 1/28/24

CONNEALY COMRADE 1385
*MAC AZURE 81A
NIF BOULDER 46B
MJB DAKOTA 152C
*GGT FINAL CHOICE 119B
GGT MS MUSIC 126Z
MAC QUARTERBACK 58Y
MJB YELLOW ROSE 138Z

BW 89		ADJ WW 622		WR 96	DAM PROD 1/96		
CED	BW	WW	YW	M	STAY	MARB	REA
7.8	-1.4	67	103	13	17	0	0.48

12

We are big time fans of this 4M bull. He is negative at birth to 103 yearling and he's out of one of the really good young cows that traces back to 134C, Velocity's mother. You want to talk about making them big bodied, big muscled, easy fleshing, and sound structured, well here he is. A true rugged beef bull that has a presence and balance about him. Extremely high quality and good structured herd bull with tremendous doability.





Backed by a beautiful cow with an awesome udder and fantastic phenotype, the 85M bull himself is very rugged and dense. He's homozygous polled and homozygous black with a masculine front end and a big top opening up really wide in behind his shoulders. The bull is incredibly long bodied and long hiped with really big testicles. He gets out and travels with so much flexibility and athleticism. This is a clean jointed bull that is very high quality.

13

13



DR PATRIOT 85M

TATTOO: 85M SA#: 762032 DOB: 2/24/24

HOMOZYGOUS BLACK
HOMOZYGOUS POLLED
5/8 SA 3/8 AN

MAC F1 FREEDOM 150F

MRB PATRIOT 342H

MRB DIAMOND 140F

TSB MAVERICK 24C

MRB SALLY 116F

MRB MS PRISTINE 127Y

CONNEALY COMRADE 1385

*MAC AZURE 81A

NJF BOULDER 46B

MRB DAKOTA 152C

KEYS LONGSHOT 1Z

TSB HALIEY 3A

OPP FRONTIER 771T

MRB ROYALTY 102T



BW 87 ADJ WW 628 WR 95 DAM PROD 4/98

CED	BW	WW	YW	M	STAY	MARB	REA
10.2	-1	59	88	19	17	0.2	0.66

14



DR PATRIOT 95M

TATTOO: 95M SA#: 762415 DOB: 3/7/24

HOMOZYGOUS BLACK
HOMOZYGOUS POLLED
5/8 SA 3/8 AN

MAC F1 FREEDOM 150F

MRB PATRIOT 342H

MRB DIAMOND 140F

RCM P BLK WEST STAR 291Z

DLB WSTR PEG 501C

DLB 825U PEG 75A

CONNEALY COMRADE 1385

*MAC AZURE 81A

NJF BOULDER 46B

MRB DAKOTA 152C

OPP WEST STAR 938W

RCM P BLK WANETA 945W

DLB 634L PREMIER 825U

DLB OPPORTUNITY PEG 75R



BW 92 ADJ WW 758 WR 106 DAM PROD 3/94

CED	BW	WW	YW	M	STAY	MARB	REA
8.8	0	61	86	17	12	-0.2	0.53

If you want a Patriot son that is a little more moderate with added rib and fleshing ability then 95M is the answer. This big centered bull has an immense amount of doability and practicality being extra dimensional and dense all the way through. So rugged and powerful up front so we think this bull is extremely nice.



14



Heifer Bull. SALE FEATURE! 84M has been a favorite of many and for good reason. He puts together arguably the most impressive EPD profile on the sale with a fantastic combo of CED and BW with a high YW plus his dam charts 5 at 103. He is absolutely impressive to see in person being that clean made through his front end and tight sheathed. But he excels with that extra length of body and power yet still maintains so much strength in his top and dimension out through his hip and stifle. This is one of the true herd bull prospects of the offering. Patriot flat got it done. Stand on the fact that this bull is homozygous polled as well and you'll know he is a tremendously high quality individual.



15

15

**DR PATRIOT 84M**

TATT00: 84M SA#: 762031 DOB: 2/23/24

BLACK
HOMOZYGOUS POLLED
5/8 SA 3/8 AN

MAC F1 FREEDOM 150F

MJB PATRIOT 342H

MJB DIAMOND 140F



TSB MAVERICK 24C

MJB SALLY 122E

*MJB YELLOW ROSE 121Y

CONNEALY COMRADE 1385

*MAC AZURE 81A

NJF BOULDER 46B

MJB DAKOTA 152C

KEYS LONGSHOT 1Z

TSB HALIEY 3A

*TSB TULSA 82W

MJB MISS FIRESTORM 128U

BW 78 ADJ WW 724 WR 110 DAM PROD 5/103

CED	BW	WW	YW	M	STAY	MARB	REA
13.6	-0.4	72	120	20	14	0	0.8

16

**DR PATRIOT 100M**

TATT00: 100M SA#: 762420 DOB: 3/15/24

HOMOZYGOUS BLACK
HOMOZYGOUS POLLED
1/2 SA 1/2 AN

MAC F1 FREEDOM 150F

MJB PATRIOT 342H

MJB DIAMOND 140F



3J REDWATER 14B

DLB 3J PACETTE 916G

DLB HD FREEDOM PACE 563C

CONNEALY COMRADE 1385

*MAC AZURE 81A

NJF BOULDER 46B

MJB DAKOTA 152C

CONNEALY COUNTDOWN

3J LADY

OPP 1001Y OF 58W

DLB MS FREEDOM

BW 86 ADJ WW 729 WR 102 DAM PROD 3/103

CED	BW	WW	YW	M	STAY	MARB	REA
8.8	-0.4	66	95	19	15	0.3	0.37



16

100M a homozygous black and homozygous polled Patriot son that is very good. You want to talk about one who commands your attention from the get go? He has this stylish masculinity about him with tremendous bone and an awesome center body. The bull has impressive dimension in behind his shoulder and carries that all the way out to his hip. He is big testicled and good structured while posing up with a tremendous amount of balance from the side.



17

**DR PATRIOT 101M**

TATTOO: 101M SA#: 762421 DOB: 3/17/24

BLACK
POLLED
5/8 SA 3/8 ANMAC F1 FREEDOM 150F
MLB PATRIOT 342H
MLB DIAMOND 140FCONNEALY COMRADE 1385
*MAC AZURE 81A
NJF BOULDER 46B
MLB DAKOTA 152C
SRS SPARTACUS 0670Z
*MLB BARBIE 126Z
OPP 1001Y OF 58W
FR LESLIE 123RMLB GLADIATOR 305B
DLB GLDR LESLIE 820F
DLB HD LESLIE 559C

BW 82	ADJ WW 819	WR 100	DAM PROD 2/104				
CED	BW	WW	YW	M	STAY	MARB	REA
12.2	1.4	75	112	20	19	0.1	0.72

Really nice Patriot son here with a lot of rib and body. A bull that deep hearted and big centered with a lot of spread down his top and power out through his hip. Love the shape and expression across his stifle but then step in and study this one from the side and everything balances and fits together really nice.



17

18

**DR PATRIOT 106M**

TATTOO: 106M SA#: 762426 DOB: 3/21/24

BLACK
HOMOZYGOUS POLLED
5/8 SA 3/8 ANMAC F1 FREEDOM 150F
MLB PATRIOT 342H
MLB DIAMOND 140FCONNEALY COMRADE 1385
*MAC AZURE 81A
NJF BOULDER 46B
MLB DAKOTA 152C
HOOVER DAM
OPP BLK LADY 58W OF 658S
DJD IRISH NEUTRON
FR MISS LISA 47LROPP 1001Y OF 58W
DLB HDAM LISA 535C
DLB NEUTRON LISA 47Z

BW 86	ADJ WW 794	WR 111	DAM PROD 3/106				
CED	BW	WW	YW	M	STAY	MARB	REA
10.5	-0.5	63	95	22	10	0.1	0.32

106M is a very high-quality individual that brings all the Patriot look and presence up front. He's homozygous polled and masculine with extra length and levelness. We really like the power out his hip and we love watching this bull get out and travel as he reaches with so much given authority.

19

**DR PATRIOT 97M**

TATTOO: 97M SA#: 762417 DOB: 3/12/24

HOMOZYGOUS BLACK
HOMOZYGOUS POLLED
1/2 SA 1/2 ANMAC F1 FREEDOM 150F
MLB PATRIOT 342H
MLB DIAMOND 140FCONNEALY COMRADE 1385
*MAC AZURE 81A
NJF BOULDER 46B
MLB DAKOTA 152C
KEYS RETRIBUTION 18B
MLB MARY 134CMLB VELOCITY 414E
DLB VEL JS873 009H
JS 873 ANGUS DAM

BW 66	ADJ WW 709	WR 99	DAM PROD 2/97				
CED	BW	WW	YW	M	STAY	MARB	REA
12.8	-1.1	67	108	16	16	0.2	0.23

Heifer Bull. Another really good heifer bull that charts a great CED and BW but puts it on with great growth figures. 66 pounds at birth and man he is smooth made and put together extremely nicely. A bull that's so clean and correct all the way through being good structured and good footed. We like this 97M for a really nice heifer bull candidate.





20



DR PATRIOT 7M

HOMOZYGOUS BLACK
HOMOZYGOUS POLLED
5/8 SA 3/8 AN

TATTOO: 7M SA#: 762027 DOB: 2/1/24

MAC F1 FREEDOM 150F

MRB PATRIOT 342H

MRB DIAMOND 140F



GGT SMOKE SCREEN 213F

MRB SHADOW 147K

MRB LEADMAN 163F

CONNELLY COMRADE 1385

*MAC AZURE 81A

NJF BOULDER 46B

MRB DAKOTA 152C

*GGT FINAL CHOICE 119B

GGT MS MUSIC 126Z

GGT P BK EDELMAN 164D

MRB MARY 175C

BW 95 ADJ WW 685 WR 106 DAM PROD 1/106

CED	BW	WW	YW	M	STAY	MARB	REA
9.6	0.6	68	101	16	15	0	0.69

7M a homozygous black homozygous polled son of Patriot on a first calf heifer that did a tremendous job. This bull does a lot of things really right and we read him to be very complete and fault free. He's got an abundance of rib and muscle but still gets out and handles himself on his feet and legs really well. He's a very correctly balanced, very appealing bull that is hard to pick a hole in.

Testimonial

Janet Christensen, CJR Ranches, Montana, Wyoming and Nebraska, gave a glowing report on the Patriot daughters. "I just had to call. I just got done sorting all of the replacement heifers and wanted to let you know how good these Patriot daughters are (MRB Patriot 342H). They really stand out. I have a policy of only using semen on a bull two years, but I may make an exception with Patriot and use him a 3rd year. I just really like them." Janet also shared some recent carcass results with a group of heifers going 92% Choice and better.

21



DR PATRIOT 78M

BLACK
HOMOZYGOUS POLLED
5/8 SA 3/8 AN

TATTOO: 78M SA#: 762025 DOB: 2/29/24

MAC F1 FREEDOM 150F

MRB PATRIOT 342H

MRB DIAMOND 140F



TSB MAVERICK 24C

MRB SALLY 100G

*MRB TOPAZ 144E

CONNELLY COMRADE 1385

*MAC AZURE 81A

NJF BOULDER 46B

MRB DAKOTA 152C

KEYS LONGSHOT 1Z

TSB HALIEY 3A

*GGT P BK ENFORCER 300U

LCC PRIDE K3073

BW 87 ADJ WW 681 WR 103 DAM PROD 2/105

CED	BW	WW	YW	M	STAY	MARB	REA
9.5	-1.7	54	78	22	12	0.4	0.45

Love the athleticism and ruggedness in this 78M bull who is extra stout featured and big boned yet still clean jointed from behind. Then the fact he handles all that density at the ground with an athletic and fluid moving package is a bonus.

22



DR PATRIOT 92M

BLACK
HOMOZYGOUS POLLED
1/2 SA 1/2 AN

TATTOO: 92M SA#: 762412 DOB: 3/1/24

MAC F1 FREEDOM 150F

MRB PATRIOT 342H

MRB DIAMOND 140F



3J REDWATER 14B

DLB 3J ALLSPICE 022H

DLB NTM ALLSPICE 450B

CONNELLY COMRADE 1385

*MAC AZURE 81A

NJF BOULDER 46B

MRB DAKOTA 152C

CONNELLY COUNTDOWN

3J LADY

DJD IRISH NEUTRON

DMD SPICY GIRL L634R

BW 86 ADJ WW 737 WR 103 DAM PROD 2/102

CED	BW	WW	YW	M	STAY	MARB	REA
11.6	-0.3	58	88	19	16	0.1	0.28

Homozygous polled Patriot son who is negative at birth and his phenotype matches that perfectly with a smooth shoulder, strong top, and level hip. 92M has more than enough muscle and rib being good structured and eye appealing.





23



DR DANTE 25M

**HOMOZYGOUS BLACK
HOMOZYGOUS POLLED**
5/8 SA 3/8 AN

TATTOO: 25M SA#: 761974 DOB: 3/21/24

GGT SMOKESCREEN 213F

MJB MAGICIAN 306J

MJB MS BORDERLINE 102G

MAC F1 ENDURO 43E

MJB JEMMA 127J

*MJB CLEOPATRA 124C

*GGT FINAL CHOICE 119B

GGT MS MUSIC 126Z

*DJF BORDER LINE 815A

MJB MS KITTY 102E

CONNEALY COMRADE 1385

MAC CARINA 176C

SRS SPARTACUS 0670Z

MJB BARBIE 136A



BW 92 ADJ WW 671 WR 104 DAM PROD 2/114

CEB	BW	WW	YW	M	STAY	MARB	REA
10.4	0.9	60	92	20	19	0.1	0.42

MJB MAGICIAN 306J

MJB Magician 306J was our pick of the Smokescreen sons to keep that year and did he ever knock it out of the park with the sons selling in this year's sale. Out of the 102G Borderline daughter, who is tremendous in her own right. We lost 306J and hadn't gotten semen collected yet so these are the only ones there will be and are we ever sick about that. Tremendous quality just like 306J. His phenotype and performance was fantastic. The dam has a great udder and beautiful phenotype. His EPDs Top 15% WW, YW, Marbling and CEM, Top 25% CE.

Out of a second calf heifer that ratios 2 at 114. A Magician son that is absolutely one of the sale standouts in terms of his feet and legs. He is incredibly good structured with a long and level hip and phenomenal set to his hock and pastern making him so athletic on the go. Immense amount of balance and presence from the side with a bold rib shape. Tremendously big pen set and whether stopped or on the go this tight sheathed bull balances to a very high level.





Mother is a Gold Dam. This bull's quality begins with his mother, she flat gets it done with 3 at 108. She is one of my favorite cows that we've ever produced at the ranch and every year she stamps him with the quality and the caliber we see in this bull. You want one that is big footed and sound at the ground? You want one that is flexible and good in his joints and knee, massive body and big muscled? Here he is. This is one that can go out, breed a large group of cows and make an immediate impact in his first calf crop. You want to make heifers, bulls or steers? This guy flat gets it done. Backed by one of the best cows on the place, he is a tremendous individual.

24

24



DR DANTE 43M

TATTOO: 43M SA#: 761990 DOB: 3/12/24

BLACK
HOMOZYGOUS POLLED
5/8 SA 3/8 AN

GGT SMOKESCREEN 213F
***MJB MAGICIAN 306J**
MJB MS BORDERLINE 102G

*GGT FINAL CHOICE 119B
GGT MS MUSIC 126Z
*DJF BORDER LINE 815A
MJB MS KITTY 102E
CONNEALY COMRADE 1385
MAC CARINA 176C
*TSB TULSA 82W
MJB MS PRISTINE 111W



MAC F1 ENDURO 43E
***MJB GEMMA 109H**
MJB YELLOW ROSE 172B

BW 94		ADJ WW 738		WR 112	DAM PROD 3/108		
CED	BW	WW	YW	M	STAY	MARB	REA
10.1	1.6	70	116	18	18	0.1	0.46

25



DR DANTE 67M

TATTOO: 67M SA#: 762014 DOB: 2/23/24

HOMOZYGOUS BLACK
HOMOZYGOUS POLLED
5/8 SA 3/8 AN

GGT SMOKESCREEN 213F
***MJB MAGICIAN 306J**
MJB MS BORDERLINE 102G



MJB GLADIATOR 305B
***MJB EMPRESS 119H**
*MJB MS MOONSTONE 128Y

*GGT FINAL CHOICE 119B
GGT MS MUSIC 126Z
*DJF BORDER LINE 815A
MJB MS KITTY 102E
SRS SPARTACUS 0670Z
*MJB BARBIE 126Z
MJB VOYAGER 221W
MISS W CHALLENGER 27N

BW 96		ADJ WW 693		WR 105	DAM PROD 3/92		
CED	BW	WW	YW	M	STAY	MARB	REA
10.3	2	71	114	15	15	-0.1	0.64

Without a doubt here is one of the very best bulls in the sale and one of our absolute favorites to date. We love the phenotype his mother possesses with a beautiful udder and great feet. The bull himself is elite with the performance, power and mass necessary to be a good rugged beef bull but he brings forward the balance and structural quality to elevate his presence from the profile. He is extra dense and big bodied with big testicles. Top tier quality here!



25



26



DR DANTE 30M

TATTOO: 30M SA#: 761981 DOB: 3/13/24

HOMOZYGOUS BLACK
HOMOZYGOUS POLLED
5/8 SA 3/8 AN

GGT SMOKESCREEN 213F

MJB MAGICIAN 306J

MJB MS BORDERLINE 102G

*GGT FINAL CHOICE 119B

GGT MS MUSIC 126Z

*DJF BORDER LINE 815A

MJB MS KITTY 102E

CONNEALY COMRADE 1385

*MAC AZURE 81A

SRS BENCHMARK 8105B

MJB YELLOW ROSE 103B

MAC F1 FREEDOM 150F

MJB BETSY 171J

MJB MUSTANG 106D



BW 90 ADJ WW 686 WR 106 DAM PROD 2/108

CED	BW	WW	YW	M	STAY	MARB	REA
13.9	-0.9	62	100	18	13	0.1	0.42

Homozygous polled, homozygous black Magician son that is another tremendous individual. Fantastic calving ease numbers of 14.2 CED with a -0.9 BW out of a young cow proving herself with 2 at 108. Man this bull is something with so much look and presence. Plus we love how he is so sound yet his muscle and rib shape is tremendous. 30M is a high quality, incredibly good balanced individual.

27



DR DANTE 76M

TATTOO: 76M SA#: 762023 DOB: 3/8/24

BLACK
HOMOZYGOUS POLLED
5/8 SA 3/8 AN

GGT SMOKESCREEN 213F

MJB MAGICIAN 306J

MJB MS BORDERLINE 102G

*GGT FINAL CHOICE 119B

GGT MS MUSIC 126Z

*DJF BORDER LINE 815A

MJB MS KITTY 102E

CONNEALY COMRADE 1385

*MAC AZURE 81A

SRS SPARTACUS 0670Z

MJB BARBIE 136A

MAC F1 FREEDOM 150F

MJB BETSY 175H

*MJB CLEOPATRA 124C



BW 95 ADJ WW 724 WR 110 DAM PROD 3/104

CED	BW	WW	YW	M	STAY	MARB	REA
10.6	3	74	115	19	19	0	0.87

76M weaned off at 724 pounds and is another homozygous polled Magician son out of the 175H cow that charts 3 at 104. You can see the performance and power that's bred into him. This bull is extremely smooth shouldered and strong topped plus we love his length of body and hip. He is so sound on his feet and legs with a great muscle pattern and tight sheath.





28



DR DANTE 82M

HOMOZYGOUS BLACK
POLLED
5/8 SA 3/8 AN

TATTOO: 82M SA#: 762029 DOB: 3/1/24

GGT SMOKESCREEN 213F
MRB MAGICIAN 306J
MRB MS BORDERLINE 102G

*GGT FINAL CHOICE 119B
GGT MS MUSIC 126Z
*DJF BORDER LINE 815A
MRB MS KITTY 102E
KEYS LONGSHOT 1Z
TSB HALIEY 3A
MRB SALUTE 263S
MISS W HIFLYER 152N



TSB MAVERICK 24C
MRB SALLY 152H
*MRB MISS FIRESTORM 151X

BW 86		ADJ WW 640		WR 97	DAM PROD 3/93		
CED	BW	WW	YW	M	STAY	MARB	REA
13	1.5	72	115	14	11	0	0.86

Really a moderate framed, big bodied, and smooth muscled bull that transitions and flows from his shoulder and fore rib to his hip very effortlessly. Really strong in his top and set right in his tailhead with a tight sheath. Here is a bull with a low input look that's tremendous in terms of doability.

29



DR DANTE 28M

BLACK
HOMOZYGOUS POLLED
5/8 SA 3/8 AN

TATTOO: 28M SA#: 761977 DOB: 3/13/24

GGT SMOKESCREEN 213F
MRB MAGICIAN 306J
MRB MS BORDERLINE 102G



MAC F1 FREEDOM 150F
MRB BETSY 172J
*MRB POCAHONTAS 108A

*GGT FINAL CHOICE 119B
GGT MS MUSIC 126Z
*DJF BORDER LINE 815A
MRB MS KITTY 102E
CONNELLY COMRADE 1385
*MAC AZURE 81A
MRB APACHE 241X
MRB MS PRISTINE 120Y

BW 80		ADJ WW 623		WR 96	DAM PROD 2/98		
CED	BW	WW	YW	M	STAY	MARB	REA
13.2	-0.6	69	109	19	18	0.2	0.55

Heifer Bull. 28 M is a standout genetically with a 14.1 CED and negative BW to a 117 at Yearling, here is another one of the good Magician sired bulls that is very long bodied, stylish and eye appealing with the good looking presence.

Testimonial

Deichmann Livestock Brokerage purchased 3 of our customer's calves – Wilson's V Ranch, Van Huele and Turnell's – and sent them to a feedyard in Nebraska. The feedyard reported back that they were really happy with them from start to finish. Health was good, gain was good and the heifers graded 100% Choice and better.





30



DR JASPER 17M

TATTOO: 17M SA#: 761962 DOB: 3/13/24

BLACK
HOMOZYGOUS POLLED
5/8 SA 3/8 AN

MAC GALAXY 68G

TSB JASPER 16J

*TSB REBECCA 120G

*MAC BLACKBEARD 31B
MAC F1 EVELYN 486E
TSB ECHO 62E
TSB KELLI 4D
CONNEALY COMRADE 1385
*MAC AZURE 81A
*DJF BORDER LINE 815A
MJB MS OVATION 121E



MAC F1 FREEDOM 150F

MJB BETSY 101K

MJB MS BORDERLINE 104G

BW 89 ADJ WW 778 WR 120 DAM PROD 1/120

CED	BW	WW	YW	M	STAY	MARB	REA
10.7	3.4	76	129	24	14	0.3	0.7

BIG TIME HERD BULL. 17M is quite possibly the most unique individual we have ever raised. His presence in the pen makes him a standout and he is the one people find immediately and keep coming back to. Weaned at almost 800 pounds with a 120 WW index, he is the real deal. He has so much quality and front end eye appeal yet comes back with the widest pin set and biggest hip of any bull in the sale. He comes with incredible rib shape and a powerful muscle pattern. What elevates him to the highest level though, is his structure. This bull is so athletic and sound off of both ends and to be that clean jointed but also that stout featured makes him a unique breeding piece. Get in here!



TSB JASPER 16J

16J was the high marbling, high performing bull we selected from TB Salers in South Dakota. He is a meatwagon. Great length and depth of body, good feet and legs. We believe he will do some really good things as we continue to use him. His progeny in the sale will definitely catch your eye. Out of the Gold Dam, 120G, (signified by an asterisk next to their name in the pedigree), we are excited for the females to add their contribution. Super set of bulls out of 16J in this year's sale. EPDs are negative BW, Top 30% for YW and Milk and Top 15% Marbling.



This stout 16M bull is one you need to get really excited about. The bull is a 104 yearling and weaning just shy of 700 pounds and man he is impressive to see in person. Huge body and big centered with so much power. This bull's 3/4 view is as genuine and honest as you can make one but he's stylish and eye appealing when he sets up from the profile. Has just a tremendously balanced herd bull look about him. Really like 16M.



31

31



DR JASPER 16M

TATTOO: 16M SA#: 761959 DOB: 2/17/24

BLACK
SCURRED
5/8 SA 3/8 AN

MAC GALAXY 68G

TSB JASPER 16J

*TSB REBECCA 120G



GGT SMOKESCREEN 213F

MJB SHADOW 135K

*MJB CLEOPATRA 124C

*MAC BLACKBEARD 31B

MAC F1 EVELYN 486E

TSB ECHO 62E

TSB KELLI 4D

*GGT FINAL CHOICE 119B

GGT MS MUSIC 126Z

SRS SPARTACUS 0670Z

MJB BARBIE 136A

W 90		ADJ WW 675		WR 104		DAM PROD 1/104	
CED	BW	WW	YW	M	STAY	MARB	REA
9.8	1.5	69	107	19	18	0.3	0.9

32



DR JASPER 1M

TATTOO: 1M SA#: 761966 DOB: 1/29/24

HOMOZYGOUS BLACK
HOMOZYGOUS POLLED
5/8 SA 3/8 AN

MAC GALAXY 68G

TSB JASPER 16J

*TSB REBECCA 120G



ECR INVESTMENT 822F

MJB MELANIA 202K

*MJB SUN GODDESS 122Y

*MAC BLACKBEARD 31B

MAC F1 EVELYN 486E

TSB ECHO 62E

TSB KELLI 4D

CONNEALY CAPITALIST 028

*ECR PLD LADY 50B OF 50X

MAC F1 SUNDANCE 4S

ZBR MS BLK TOPAZ 007W

BW 92		ADJ WW 681		WR 105		DAM PROD 1/105	
CED	BW	WW	YW	M	STAY	MARB	REA
12.5	0.7	66	106	23	19	0.3	0.55



32

He's out of a first calf heifer that did a fantastic job with a weaning weight ratio of 105 and has a spread of 0.7 at birth to a 106 at yearling, there is a lot of bull here! He has a rugged, masculine look about him being extremely big centered and soft sided. He's tight sheathed and really big pinned with added dimension across his stifle. Just a world of substance and do ability here.



33



DR JASPER 10M

TATTOO: 10M SA#: 761938 DOB: 1/31/24

**HOMOZYGOUS BLACK
HOMOZYGOUS POLLED**
5/8 SA 3/8 AN

MAC GALAXY 68G

TSB JASPER 16J

*TSB REBECCA 120G

*MAC BLACKBEARD 31B
MAC F1 EVELYN 486E
TSB ECHO 62E
TSB KELLI 4D

MTB GARRELLI 372G

MTB LIFESTYLE 104K

MTB SALLY 116F

MAC F1 ENDURO 43E
MTB PRISTINE 135X
TSB MAVERICK 24C
MTB MS PRISTINE 127Y



BW 82 ADJ WW 694 WR 107 DAM PROD 1/107

CED	BW	WW	YW	M	STAY	MARB	REA
14	-0.8	54	89	24	13	0.2	0.39

Heifer Bull. 10M is one of the really good heifer bulls in the sale out of our 16J featured herd sire. On paper he has a tremendous CED and BW but then you see the bull visually and he is so smooth shouldered and clean jointed that we have ultimate faith in him running on heifers. As a bonus, he comes with an extra shot of length and extension with a strong top and level hip. Plus he gets out with so much reach and flex off of his front end making him a long striding, good structured bull.

34



DR JUNEAU 98M

TATTOO: 98M SA#: 762418 DOB: 3/13/24

**BLACK
HOMOZYGOUS POLLED**
5/8 SA 3/8 AN

ECR RESOURCE 702 OF 116Y

ECR JUNEAU 352J

OPP BLK LADY 53W OF 53S

OPP X059 OF 53T

DLB FROST SPICE 634Z

DMD SPICY GIRL L634R

S A V RESOURCE 1441
OPP LADY PRIDE 116Y
JSR BARBADOS 720T
OPP BLACK LADY 53S
TSB PLD FROST 80S
OPP BLACK LADY 53T
OPP OPPORTUNITY 305N
DMD SPICE GIRL 634L



BW 82 ADJ WW 734 WR 103 DAM PROD 3/99

CED	BW	WW	YW	M	STAY	MARB	REA
13.6	0.6	65	108	16	9	0.3	0.68

We're big fans of this 98M bull and we think he's one of the absolute best in the sale! To put that much substance, power, feature and bone into one package that still travels and motors the way that he does is challenging. He is extremely athletic and sound structure with a big top and bold ribcage shape. We really like this bull.



ECR JUNEAU 352J

Juneau is a super long bodied Midland Bull Test graduate that also bends the curve with easy calving, low birth weights and tremendous performance. He is big footed and long striding when on the move. You'll like his kind. He has an outstanding sire group in this year's sale. EPDs are negative BW Top 25% CED and Top 10% Marbling.

35



DR JUNEAU 99M

TATTOO: 99M SA#: 762419 DOB: 3/14/24

**HOMOZYGOUS BLACK
HOMOZYGOUS POLLED**
3/8 SA 5/8 AN

ECR RESOURCE 702 OF 116Y

ECR JUNEAU 352J

OPP BLK LADY 53W OF 53S



MJB VELOCITY 414E

DLB VEL DKE778 902G

E 778 ANGUS DAM

S A V RESOURCE 1441
OPP LADY PRIDE 116Y
JSR BARBADOS 720T
OPP BLACK LADY 53S
KEYS RETRIBUTION 18B
MJB MARY 134C

BW 87	ADJ WW 801	WR 112	DAM PROD 2/114				
CED	BW	WW	YW	M	STAY	MARB	REA
9.1	1	70	118	15	20	0.3	0.67

A homozygous polled, homozygous black Juneau son that has the goods. If you want one with some extra performance with added length of body to put some pounds in a steer calf crop then just study this 99M bull. He is one of the better ones in the sale in terms of power and performance with mass, width, and dimension. He is extra level out his hip and extremely good on his feet and legs marking him a high quality herd bull prospect.

36



DR JUNEAU 105M

TATTOO: 105M SA#: 762425 DOB: 3/20/24

**BLACK
HOMOZYGOUS POLLED**
5/8 SA 3/8 AN

ECR RESOURCE 702 OF 116Y

ECR JUNEAU 352J

OPP BLK LADY 53W OF 53S



AVS MR DEEDS 719D

***DLB BB SCARLETT 037H**

DLB GLDR FLOWER 758E

S A V RESOURCE 1441
OPP LADY PRIDE 116Y
JSR BARBADOS 720T
OPP BLACK LADY 53S
ECR BLACK BEAR 430B
DHD MANDY 008X
MJB GLADIATOR 305B
DLB NTRN SCARLETT 315A

BW 88	ADJ WW 817	WR 114	DAM PROD 3/109				
CED	BW	WW	YW	M	STAY	MARB	REA
8.9	1.5	67	103	18	12	0.1	0.84

Mother is a Gold Dam. 105M is so nice in the lay and angle of his shoulder and set of his knee that he takes a very forward reaching stride. This bull is clean up front and really strong in behind his shoulder. Definitely love his length of body and long hip.





Heifer Bull. A Juneau son that sets the standard for rib and body being so deep hearted and big centered. Love the way this bull is so soft back to his flank with that extra power and fleshing ability to go along with it. He opens up wide in behind his shoulder and stays extra true and dimensional out through his hip. If you want one you can turn out in the pasture to cover a lot of cows and come back in great breeding shape, then this 103M fits in terms of that extra longevity.

37

37



DR JUNEAU 103M

TATTOO: 103M SA#: 762423 DOB: 3/18/24

**HOMOZYGOUS BLACK
HOMOZYGOUS POLLED**
1/2 SA 1/2 AN

ECR RESOURCE 702 OF 116Y

ECR JUNEAU 352J

OPP BLK LADY 53W OF 53S



MJB VELOCITY 414E

DLB VEL FLOWER 904G

DLB GLDR FLOWER 758E

S A V RESOURCE 144I

OPP LADY PRIDE 116Y

JSR BARBADOS 720T

OPP BLACK LADY 53S

KEYS RETRIBUTION 18B

MJB MARY 134C

MJB GLADIATOR 305B

DLB NTRN SCARLETT 315A

BW 78 ADJ WW 772 WR 108 DAM PROD 3/97

CED	BW	WW	YW	M	STAY	MARB	REA
14.1	-0.6	70	111	10	18	0.4	0.89

38



DR JUNEAU 107M

TATTOO: 107M SA#: 762427 DOB: 4/3/24

**BLACK
HOMOZYGOUS POLLED**
3/8 SA 5/8 AN

ECR RESOURCE 702 OF 116Y

ECR JUNEAU 352J

OPP BLK LADY 53W OF 53S



3J REDWATER 14B

DLB 3114B ACE-RED 801F

DLB HD ACE-RED 657D

S A V RESOURCE 144I

OPP LADY PRIDE 116Y

JSR BARBADOS 720T

OPP BLACK LADY 53S

CONNELLY COUNTDOWN

3J LADY

OPP 1001Y OF 58W

VGW 613 RED P0215

BW 88 ADJ WW 766 WR 107 DAM PROD 4/100

CED	BW	WW	YW	M	STAY	MARB	REA
8.8	0.7	58	87	16	18	0.3	0.32

One of the youngest bulls in the sale but he has absolutely done a great job while he's been on feed. A bull that poses up and gives an awesome presence and balance from the side. He is extra attractive and level down his top line and set right in his tail head with enough rib and muscle.



38



Heifer Bull. This 110M bull is a Juneau son that we like a great deal and his maternal brother was one of the sale highlights last year. He emulates his quality to a high level with a world of depth of body. He's easy fleshing and muscular. I love watching this bull circle the pen with that added flex and give off of both ends. An extremely high quality individual.

39



DR JUNEAU 110M

TATTOO: 110M SA#: 762497 DOB: 3/18/24

BLACK
POLLED
1/4 SA 3/4 AN

ECR RESOURCE 702 OF 116Y
ECR JUNEAU 352J
OPP BLK LADY 53W OF 53S

S A V RESOURCE 144I
OPP LADY PRIDE 116Y
JSR BARBADOS 720T
OPP BLACK LADY 53S

E 778 ANGUS DAM

BW 70		ADJ WW 731		WR 102	DAM PROD 3/99			
CED	BW	WW	YW	M	STAY	MARB	REA	
14.5	-2.2	62	98	18	12	0.4	0.24	

40



DR JUNEAU 94M

TATTOO: 94M SA#: 762414 DOB: 3/4/24

BLACK
HOMOZYGOUS POLLED
1/2 SA 1/2 AN

ECR RESOURCE 702 OF 116Y
ECR JUNEAU 352J
OPP BLK LADY 53W OF 53S

S A V RESOURCE 144I
OPP LADY PRIDE 116Y
JSR BARBADOS 720T
OPP BLACK LADY 53S
KEYS RETRIBUTION 18B
MJB MARY 134C
3J REDWATER 14B
DLB NTRN PACETTE 888Z



MJB VELOCITY 414E
DLB VEL PACETTE 011H
DLB 3J PACETTE 831F

BW 84		ADJ WW 747		WR 104	DAM PROD 3/103			
CED	BW	WW	YW	M	STAY	MARB	REA	
10.9	-0.1	66	110	12	17	0.3	0.57	

A Juneau son we like a lot. If you want them to come in a little bit more moderate package without sacrificing any power and mass then this is your bull. 94M has so much rib and body being really big centered and soft sided. He is so powerful when you analyze him off either end and steps to the surface square and true all the way to the ground. Love the density and mass this herd sire prospect possesses.





41



DR FREDERIC 51M

TATTOO: 51M SA#: 761998 DOB: 2/15/24

BLACK
HOMOZYGOUS POLLED
3/4 SA 1/4 AN

SW FREDERIC 102F
KEYS FREDERIC 78J
MISS KEY EMBER 61E

RC BUCK 150B
SW MAGGIE 43Y
KEYS MONUMENT 234A
MISS KEY EMBER 3B
MAC QUARTERBACK 58Y
*MJB BARBIE 120W
*TSB TULSA 82W
MIS 92F MASTERPIECE 57H



MJB MANNING 342C
MJB VALERIE 176G
*MJB YELLOW ROSE 156Z

BW 83 ADJ WW 777 WR 118 DAM PROD 3/107

CED	BW	WW	YW	M	STAY	MARB	REA
15.9	-2.8	48	59	20	17	0.1	0.52

Heifer Bull. 51M might be the most unique bull in this sale. He is without question the stoutest and most powerful bull in the sale that is the heaviest structured and biggest boned. Just immense in terms of his muscle shape, durability, and denseness. And then to handle it that good on his feet and legs. He's so sound structured and fluid in his movement. Plus read him on paper and not only did he wean off at 777 pounds, but 51M is a 16 CED and a -3.1 at birth. Take advantage of a unique opportunity to buy a heifer bull that comes with that kind of strength and power. You're not going to sacrifice anything with this one here.





Mother is a Gold Dam. This bull offers as much performance and power as any bull in the sale. He charts a 77 at weaning to a 114 at yearling and his dam, the 163G cow, has an impressive 4 at 111. Then you find this bull in the pen to have as much body and as much natural width, power and dimension as any of them. The bull is so big in behind his shoulder and stout out through his hip with extra length and levelness throughout. Love the performance, really a power driven individual.

42



DR SMOKESCREEN 40M

TATTOO: 40M SA#: 761988 DOB: 3/11/24

BLACK
POLLED
5/8 SA 3/8 AN

*GGT FINAL CHOICE 119B
GGT SMOKESCREEN 213F
GGT MS MUSIC 126Z



*MCD SF ANSWER 71 - 3545
***MJB 3545 ANSWER 163G**
*MJB MS DAWN 171W

*GGT P BLK HEAVY HITTER
*GGT MS FINALITY 139Y
CONNEALY THUNDER
*GGT P BK ROSE 246U
CONNEALY ANSWER 71
SF MISS 975
SW THUNDER 9T
MISS W BAR NONE 31J

BW 87		ADJ WW 760		WR 115		DAM PROD 4/111	
CED	BW	WW	YW	M	STAY	MARB	REA
12.2	1	77	114	21	15	-0.2	0.9

43



DR SMOKESCREEN 75M

TATTOO: 75M SA#: 762022 DOB: 3/3/24

HOMOZYGOUS BLACK
POLLED
5/8 SA 3/8 AN

*GGT FINAL CHOICE 119B
GGT SMOKESCREEN 213F
GGT MS MUSIC 126Z



MJB BARBWIRE 260S
***MJB BARBIE 126Z**
MJB MORGIANA 102S

*GGT P BLK HEAVY HITTER
*GGT MS FINALITY 139Y
CONNEALY THUNDER
*GGT P BK ROSE 246U
W POWER BOSS 203P
MS W INDEPENDENCE 214L
MORGANS DIRECTION 111 9901
MJB PUMA 103P

BW 92		ADJ WW 705		WR 107		DAM PROD 8/108	
CED	BW	WW	YW	M	STAY	MARB	REA
11.3	1.8	75	107	14	12	0	0.57

Mother is a Gold Dam. 75M has been one of the standouts since last summer, Dad was sure to find this one on all of his pasture checks. His mother is a legend in our program being the dam of Gladiator and many other top end herd bull prospects and replacement heifers weaning 8 at 108. It is criminal that she has never been flushed. The bull himself weaned off over 700 pounds and man is he ever royally bred. There's so much performance, mass, muscle and rib in a rugged and stout package. He's big testicled and big topped. This is a true herd bull prospect with the pedigree to back it up.





GGT SMOKESCREEN 213F

The last natural service sons of Smokescreen are in this year's sale and did he ever do an amazing job with this set. He has made some really nice females that are those that catch your eye with their femininity and attractiveness. Offers that same sleep-easy calving ease with great performance. His EPDs are negative BW, Top 15% WW and Top 20% YW.

44



DR SMOKESCREEN 50M

HOMOZYGOUS BLACK
HOMOZYGOUS POLLED
5/8 SA 3/8 AN

TATT00: 50M SA#: 761997 DOB: 2/22/24

*GGT FINAL CHOICE 119B
GGT SMOKESCREEN 213F
GGT MS MUSIC 126Z

*GGT P BLK HEAVY HITTER
*GGT MS FINALITY 139Y
CONNEALY THUNDER
*GGT P BK ROSE 246U
B C C BUSHWACKER 41-93
MAC BLK MADISON 306M
W POWER BOSS 203P
MISS W VERM DATELINE 39M



MAC F1 SAMURAI 70S
MJB MS SAMURAI 123Z
MJB MS SUPREMACY 00T

W 94	ADJ WW 720	WR 109	DAM PROD 10/107				
CED	BW	WW	YW	M	STAY	MARB	REA
11.4	1.5	68	93	18	16	0	0.96

A homozygous polled Smokescreen backed by the 123Z cow who has 10 at 107! This bull is bred in the purple! He is strong topped and smooth shouldered with the extra length of body that his sire stamps them with. This bull is really clean made and tight sheathed being put together very well from the side and masculine about his head.

45



DR SMOKESCREEN 55M

BLACK
HOMOZYGOUS POLLED
3/4 SA 1/4 AN

TATT00: 55M SA#: 762001 DOB: 3/4/24

*GGT FINAL CHOICE 119B
GGT SMOKESCREEN 213F
GGT MS MUSIC 126Z

*GGT P BLK HEAVY HITTER
*GGT MS FINALITY 139Y
CONNEALY THUNDER
*GGT P BK ROSE 246U
NJF TOP LEVEL 41T
NJF MISS MERCURY 292Z
*MAC TORRINGTON 139T
MJB MS DAWN 133W



NJF BOULDER 46B
MJB DIAMOND 111F
*MJB SUNFLOWER 138B

BW 82	ADJ WW 676	WR 105	DAM PROD 5/90				
CED	BW	WW	YW	M	STAY	MARB	REA
15.6	-2.6	54	68	13	15	-0.1	1.13

Heifer Bull. Homozygous polled Smokescreen son that is one of the better heifer bulls in the offering charting 15.6 CED and a very negative BW. The bull is really deep bodied and rugged being extra practical and so fluid in his movement. He has plenty of muscle to go along with it.





46

46

**DR SMOKESCREEN 77M****HOMOZYGOUS BLACK
POLLED**
5/8 SA 3/8 AN**TATTOO: 77M SA#: 762024 DOB: 3/9/24***GGT FINAL CHOICE 119B
GGT SMOKESCREEN 213F
GGT MS MUSIC 126Z*GGT P BLK HEAVY HITTER
*GGT MS FINALITY 139Y
CONNEALY THUNDER
*GGT P BK ROSE 246U
SRS XTRA 0347X
SRS SEIKO 0670S
MAC QUARTERBACK 58Y
MJB CLEOPATRA 106BSRS SPARTACUS 0670Z
MJB CLEOPATRA 167H
MJB MARY 112D

W 89		ADJ WW 660		WR 100		DAM PROD 2/92	
CED	BW	WW	YW	M	STAY	MARB	REA

14.8 -0.4 68 103 12 14 0 0.99

A loose made, sound structured and long striding bull that's awesome in the angle of his shoulder and excellent in the flex and give to his hock and pastern. 77M has a rugged, masculine look with a big pin set and extra dimension across his stifle.

47

**DR SMOKESCREEN 45M****TATTOO: 45M SA#: 761992 DOB: 3/10/24****BLACK
POLLED**
5/8 SA 3/8 AN*GGT FINAL CHOICE 119B
GGT SMOKESCREEN 213F
GGT MS MUSIC 126ZECR INVESTMENT 822F
MJB MELANIA 142H
*MJB TOPAZ 144E*GGT P BLK HEAVY HITTER
*GGT MS FINALITY 139Y
CONNEALY THUNDER
*GGT P BK ROSE 246U
CONNEALY CAPITALIST 028
*ECR PLD LADY 50B OF 50X
*GGT P BK ENFORCER 300U
LCC PRIDE K3073

BW 96		ADJ WW 659		WR 100		DAM PROD 3/104	
CED	BW	WW	YW	M	STAY	MARB	REA

12.5 -0.3 66 99 22 14 0.3 0.54

This is a good bull with an up headed look and nice presence about him. He's smooth shouldered, long bodied and level topped. 45M is good out through his hip and big stifled with big testicles.

48

**DR SMOKESCREEN 902M****TATTOO: 902M SA#: 766851 DOB: 5/10/24****BLACK
POLLED**
5/8 SA 3/8 AN*GGT FINAL CHOICE 119B
GGT SMOKESCREEN 213F
GGT MS MUSIC 126ZMJB TRAIL DRIVE 364C
MJB MS KITTY 102E
MJB MARY 129C*GGT P BLK HEAVY HITTER
*GGT MS FINALITY 139Y
CONNEALY THUNDER
*GGT P BK ROSE 246U
*TSB TULSA 82W
*MJB SUN GODDESS 122Y
MAC QUARTERBACK 58Y
MJB MS SAMURAI 123Z

BW 75		ADJ WW 839		WR 112		DAM PROD 3/97	
CED	BW	WW	YW	M	STAY	MARB	REA

13.9 -0.5 61 90 11 14 0.1 0.77

Heifer Bull. A moderate framed Smokescreen son with a lot of muscle expression and power. He is really big in behind his shoulder and out through his hip with ample body and rib shape.

**MAC FREEDOM 150F**

He's been one of the key herdsires to make those attractive females with tremendous udders and those herd bulls that add not only pounds but a truly attractive phenotype. We've used him on heifers and cows with great success. His EPDs rank in the Top 20% for WW, Top 10% for YW and Milk and Top 6% for Docility. His length of body and conformation is outstanding.



49

49



DR LIBERTY 68M

HOMOZYGOUS BLACK
HOMOZYGOUS POLLED
1/2 SA 1/2 AN

TATTOO: 68M SA#: 762015 DOB: 3/3/24

CONNEALY COMRADE 1385
MAC F1 FREEDOM 150F
*MAC AZURE 81A

CONNEALY CONSENSUS 7229
HAPPY GEE OF CONANGA 919
MAC WYNDHAM 54W
MAC YAVANNAH 351Y
SRS SPARTACUS 0670Z
*MJB BARBIE 126Z
MJB BARBWIRE 260S
MJB MS STYLE 171S



MJB GLADIATOR 305B
MJB EMPRESS 153E
MJB BARBIE 116A

68M represents everything that Freedom has done so well. The bull is fantastic across the board in his EPD profile with great calving ease and big growth plus his mother has weaned 6 at 102. In person he's tremendous. He is so good balanced and so stylish with the extra eye appeal Freedom stamps these cattle with. This guy has a presence about him that is only increased with his extra body and rib yet he maintains so much strength in his top and levelness out through his hip. He's extra sound and good on the go and one of the top Freedom sons we have sold. Take a look here.

BW 81		ADJ WW 681		WR 103	DAM PROD 6/102		
CED	BW	WW	YW	M	STAY	MARB	REA
13.2	0.4	70	108	22	14	-0.1	0.9





50



DR LIBERTY 44M

HOMOZYGOUS BLACK
HOMOZYGOUS POLLED
5/8 SA 3/8 AN

TATTOO: 44M SA#: 761991 DOB: 3/15/24

CONNEALY COMRADE 1385
MAC F1 FREEDOM 150F
*MAC AZURE 81A

CONNEALY CONSENSUS 7229
HAPPY GEE OF CONANGA 919
MAC WYNDHAM 54W
MAC YAVANNAH 351Y
WARD Y108 RAINSTAR T202
MJR WHITNEY 18W
WILLEKES CONVERTER 4402-9
MISS W CHALLENGE 57M 133P



MJR CRUISER 41C
MJB MS JOURNEY 129E
MJB CORAL BELL 138Y

BW 81		ADJ WW 693		WR 105		DAM PROD 6/97	
CED	BW	WW	YW	M	STAY	MARB	REA
13.3	-1.4	53	82	22	16	0.3	0.45

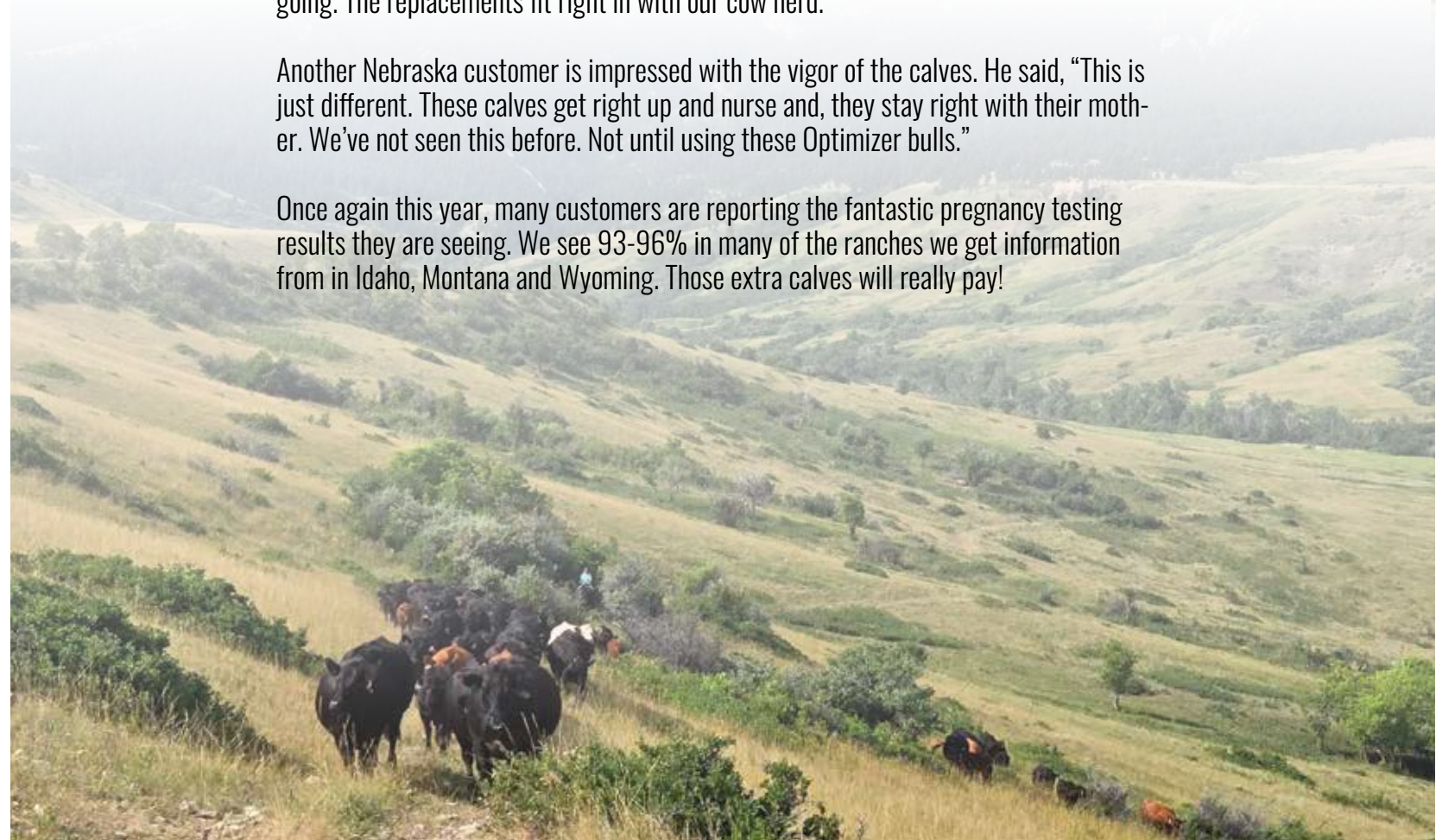
Heifer Bull. With all the quality you expect from a pedigree with Freedom on the top side! Homozygous black and homozygous polled being heifer safe on top of that. He's just good in terms of body and rib. Big muscled, extra stout and powerful from behind setting them true to the ground with a big set of testicles. He's dense and stout featured offering everything these Freedom cattle have been known to do. High quality.

Testimonial

One of our Nebraska customers that works with Dan passed along how good calving has been going. "I check the heifers twice a day. Once in the morning and once late-afternoon. Haven't touched one of them. I couldn't be happier. These calves are up and going. The replacements fit right in with our cow herd."

Another Nebraska customer is impressed with the vigor of the calves. He said, "This is just different. These calves get right up and nurse and, they stay right with their mother. We've not seen this before. Not until using these Optimizer bulls."

Once again this year, many customers are reporting the fantastic pregnancy testing results they are seeing. We see 93-96% in many of the ranches we get information from in Idaho, Montana and Wyoming. Those extra calves will really pay!





51

51



DR LIBERTY 80M

**HOMOZYGOUS BLACK
SCURRED**
1/2 SA 1/2 AN

TATTOO: 80M SA#: 762028 DOB: 2/29/24

CONNEALY COMRADE 1385
MAC F1 FREEDOM 150F
*MAC AZURE 81A

CONNEALY CONSENSUS 7229
HAPPY GEE OF CONANGA 919
MAC WYNDHAM 54W
MAC YAVANNAH 351Y
MJB APACHE 241X
LCC PRIDE K3073
MJB SALUTE 263S
MISS W MASTERPIECE 26H



MJB DENVER 322D
***MJB ALBRIGHT 170G**
*MJB MISS FIRESTORM 152X

BW 100		ADJ WW 729		WR 111	DAM PROD 4/107		
CED	BW	WW	YW	M	STAY	MARB	REA
9.3	3.7	77	124	25	16	0.2	0.82

Mother is a Gold Dam. This bull is a result of one of the most anticipated matings in the entire offering. Freedom stands for himself, and his mother is one of the crowd favorites every time a visitor comes to the place, she is a model cow. She's so well put together from the side with a fantastic teat and udder structure. She's got four calves at 107 and this bull charts a 124 at yearling and falls in his mother's footsteps in terms of presence, look, and eye appeal. He is so neat and clean up front with a balanced look about him from the side. He's tight sheathed and long bodied being extra well put together on his feet and legs. We love the strength in his top line and the levelness out through his hip. Tune in to this 80M bull.

52



DR LIBERTY 87M

**HOMOZYGOUS BLACK
HOMOZYGOUS POLLED**
1/2 SA 1/2 AN

TATTOO: 87M SA#: 762034 DOB: 3/13/24

CONNEALY COMRADE 1385
MAC F1 FREEDOM 150F
*MAC AZURE 81A

CONNEALY CONSENSUS 7229
HAPPY GEE OF CONANGA 919
MAC WYNDHAM 54W
MAC YAVANNAH 351Y
MAC F1 SUNDANCE 4S
WJM WILMA 120W
MID PERFORMER 472
MJB MS GRIDMASTER 104K



MAC QUARTERBACK 58Y
MJB MARY 118E
MJB MS PERFORMER 144W

BW 93		ADJ WW 575		WR 87	DAM PROD 6/91		
CED	BW	WW	YW	M	STAY	MARB	REA
9.5	-0.6	54	86	17	18	0.1	0.63

A homozygous black and polled Freedom son who is moderate framed and easy fleshing. He is extra sound on his feet and legs with a really nice proportionately balanced look from the profile.





C. Doubet

54

53



DR KNIGHT 108M

TATTOO: 108M SA#: 763527 DOB: 3/17/24

**BLACK
POLLED**
3/4 SA 1/4 AN

MBJ DERRINGER 311E
MBJ KNIGHT 378K
MBJ MOUNTAIN MAJESTY 105H

NJF BOULDER 46B
*MBJ SPANISH LADY 178C
GGT P BK FOUNDATION 115F
MBJ DAWNING 126F
CONNEALY COMRADE 1385
*MAC AZURE 81A
MAC F1 ENDURO 43E
XANDERIA 183 157MBJ



MAC F1 FREEDOM 150F
MBJ LIBERTY 113K
MBJ GEMMA 199G

BW 77		ADJ WW 710		WR 102	DAM PROD 1/102		
CED	BW	WW	YW	M	STAY	MARB	REA
15.2	-2	53	81	21	16	0	0.58

Heifer Bull. A really nice 3/4 blood with a 710 adjusted WW. Big CED and low BW making him an outstanding heifer bull that is good bodied and good muscled. He has a big top and is very sound structured. If you're looking for a really high quality higher percentage calving ease bull then here he is.

54



DR EXCHANGE 22M

TATTOO: 22M SA#: 761970 DOB: 4/5/24

**HOMOZYGOUS BLACK
HOMOZYGOUS POLLED**
5/8 SA 3/8 AN

ECR INVESTMENT 822F
MBJ EXCHANGE 402K
*MBJ SUN GODDESS 122Y



GGT P BK BALBOA 240G
MBJ SANTA MARIA 121J
MBJ SALLY 146G

CONNEALY CAPITALIST 028
*ECR PLD LADY 50B OF 50X
MAC F1 SUNDANCE 4S
ZBR MS BLK TOPAZ 007W
GGT P BK BALBOA 53E
GGT CONSENT 334Z
TSB MAVERICK 24C
MBJ MUSTANG 108D

BW 90		ADJ WW 664		WR 114	DAM PROD 2/114		
CED	BW	WW	YW	M	STAY	MARB	REA
8.5	2.1	71	101	21	12	0.3	0.72

Backed by a cow that is quickly becoming one of the rising stars in our program, 121J is getting it done with 2 at 114. This is the second year in a row she's had Dad's favorite calf during the summer. And man I mean to tell you, this bull is something! A true herd bull prospect with so much body, rib and muscle. He's big testicled and stout featured but still really clean jointed. He's homozygous black and homozygous polled with an absolute presence about him. Eye appealing and just commanding in the pen with a big foot and sound structure. This would be one of the top end bulls in the entire offering. We love with bull, extremely high quality.

55



DR EXCHANGE 23M

HOMOZYGOUS BLACK
HOMOZYGOUS POLLED
5/8 SA 3/8 AN

TATTOO: 23M SA#: 761972 DOB: 3/24/24

ECR INVESTMENT 822F
*ECR PLD LADY 50B OF 50X
MAC F1 SUNDANCE 4S
ZBR MS BLK TOPAZ 007W
*GGT FINAL CHOICE 119B
GGT MS MUSIC 126Z
MAC F1 ENDURO 43E
MJB LORETTA 115D



GGT SMOKESCREEN 213F
*MJB SUN GODDESS 122Y
MJB EXCHANGE 402K
MJB SHADOW 301J
MJB GEMMA 152G

BW 84	ADJ WW 674	WR 104	DAM PROD 2/104				
CED	BW	WW	YW	M	STAY	MARB	REA
9.8	-0.2	71	107	18	9	0.3	0.37

Another Exchange son and he just stamps them with the right kind of rib, body, and fleshing ability. 23M is bold ribbed with an awesome turn back into his flank. He's a smooth muscle bull that has more than enough width and substance. Really easy fleshing and practical.

57



DR EXCHANGE 59M

HOMOZYGOUS BLACK
HOMOZYGOUS POLLED
1/2 SA 1/2 AN

TATTOO: 59M SA#: 762005 DOB: 2/29/24

ECR INVESTMENT 822F
*ECR PLD LADY 50B OF 50X
MAC F1 SUNDANCE 4S
ZBR MS BLK TOPAZ 007W
CONNEALY COMRADE 1385
MAC CARINA 176C
TLC IN FOCUS 417 TK
MJB NIKKI 157T



MAC F1 ENDURO 43E
MJB GEMMA 114H
MJB MS SPOTLIGHT 125W

BW 91	ADJ WW 626	WR 95	DAM PROD 3/92				
CED	BW	WW	YW	M	STAY	MARB	REA
10.6	0.4	63	92	20	16	0.5	0.21

An Exchange son with plenty of visual performance, depth of body and length. He is big testicled and extremely sound on its feet and legs. The bull gets out and handles himself very well.

56



DR EXCHANGE 29M

HOMOZYGOUS BLACK
HOMOZYGOUS POLLED
1/2 SA 1/2 AN

TATTOO: 29M SA#: 761978 DOB: 3/9/24

ECR INVESTMENT 822F
*ECR PLD LADY 50B OF 50X
MAC F1 SUNDANCE 4S
ZBR MS BLK TOPAZ 007W
CONNEALY COMRADE 1385
*MAC AZURE 81A
*TSB TULSA 82W
MJB MISS FIRESTORM 128U



MAC F1 FREEDOM 150F
*MJB SUN GODDESS 122Y
MJB EXCHANGE 402K
MJB BETSY 181J
*MJB YELLOW ROSE 121Y

BW 78	ADJ WW 615	WR 95	DAM PROD 2/92				
CED	BW	WW	YW	M	STAY	MARB	REA
13.2	-0.2	65	103	22	15	0.3	0.59

Heifer Bull. 29M has a unique combination of being extra stylish and attractive about his head and front end yet comes back really big bodied and big centered. He is a moderate framed bull with an abundance of doability and rib being extra powerful when you study his muscle from behind. Really a tight sheathed bull with a tremendous amount of good.

58



DR EXCHANGE 74M

HOMOZYGOUS BLACK
HOMOZYGOUS POLLED
1/2 SA 1/2 AN

TATTOO: 74M SA#: 762021 DOB: 3/5/24

ECR INVESTMENT 822F
*ECR PLD LADY 50B OF 50X
MAC F1 SUNDANCE 4S
ZBR MS BLK TOPAZ 007W
SRS XTRA 0347X
SRS SEIKO 0670S
MJB TRAIL DRIVE 364C
MJB MARY 129C



SRS SPARTACUS 0670Z
MJB CLEOPATRA 170H
MJB MS KITTY 102E

BW 84	ADJ WW 681	WR 103	DAM PROD 3/102				
CED	BW	WW	YW	M	STAY	MARB	REA
14.1	0.9	64	99	21	17	0.4	0.37

Really good bull whose mother raised a pen bull for us several years back. 74M is very complete and fault free with plenty of body and muscle. He is sound structured with a great combination of CED and growth.



MJB EXCHANGE 402K

Exchange was a standout early on as a calf and continued to just explode as he got closer to weaning. An amazing amount of rib and volume, super big top, great feet and legs. Sired by ECR Investment 822F a top gaining, super efficient, high marbling bull out of Midland Bull Test - the same sire as Gold Standard. Exchange is out of our prolific outcross donor 122Y. MJB Sun Goddess 122Y was a Gold Dam and just makes about everything you breed or flush her to a great one. His EPDs are negative BW, Top 25% CED and Top 10% for Marbling.

59



DR GENERAL 46M

TATTOO: 46M SA#: 761993 DOB: 4/19/24

BLACK
HOMOZYGOUS POLLED
1/2 SA 1/2 AN

MAC F1 ENDURO 43E

*MJB GENERAL 424G

MJB CLEOPATRA 107C

MJB GLADIATOR 305B

*MJB EMPRESS 121F

MJB MS PRISTINE 103W

CONNELLY COMRADE 1385
MAC CARINA 176C
SRS SPARTACUS 0670Z
MJB MS RESOLUTION 125A
SRS SPARTACUS 0670Z
*MJB BARBIE 126Z
OPP FRONTIER 771T
*MISS VERM DATELINE 19N



BW 85 ADJ WW 720 WR 102 DAM PROD 5/108

CED	BW	WW	YW	M	STAY	MARB	REA
14.3	-0.9	62	103	22	18	0.2	0.62

Mother is a Gold Dam. 46M is a maternal brother to lot 1 from our 2024 sale that was purchased by Joe Thomas and the cow herself is a pasture favorite for all visitors. She is picture perfect from a phenotype standpoint with a beautiful udder. With 5 at 108, she has proved everything she needs to. This bull follows closely in his brother's footsteps being big bodied and big centered with extra depth of heart and turn to his flank. He's got an abundance of muscle and power while staying good structured. We like this 46M bull.

60



DR GENERAL 38M

TATTOO: 38M SA#: 761986 DOB: 3/16/24

HOMOZYGOUS BLACK
HOMOZYGOUS POLLED
1/2 SA 1/2 AN

MAC F1 ENDURO 43E

*MJB GENERAL 424G

MJB CLEOPATRA 107C

MAC QUARTERBACK 58Y

*MJB MARY 129C

MJB MS SAMURAI 123Z

CONNELLY COMRADE 1385
MAC CARINA 176C
SRS SPARTACUS 0670Z
MJB MS RESOLUTION 125A
MAC F1 SUNDANCE 4S
WJM WILMA 120W
MAC F1 SAMURAI 70S
MJB MS SUPREMACY 00T



BW 91 ADJ WW 658 WR 100 DAM PROD 7/98

CED	BW	WW	YW	M	STAY	MARB	REA
14.9	-0.9	64	100	16	13	0.2	0.5

38M comes with everything you'd expect from these General cattle. Big muscled, stout and powerful. He's a rugged beef bull with big testicles and sets them true to the ground. He's bold in this rib cage with a rugged and dimensional presence.

61



DR KINGDOM 79M

TATTOO: 79M SA#: 762026 DOB: 2/28/24

BLACK
HOMOZYGOUS POLLED
3/4 SA 1/4 AN

CBM BARE BACK 91G

*DJF KINGDOM 224K

DJF ZANETA 224Z

KEYS RETRIBUTION 18B

*MJB LORETTA 175G

MJB MS SUNRISE 164W

*SRS OUTBACK 0809X
HMW BARONESS 65D
*MAC TOPEKA 159T
*DJF WHISTLE 924W
KEYS DIRECT FIRE 18Y
MISS KEY KRISTIN 57Y
W MALONE 186P
MISS W INDEPENDENCE 74R



BW 80 ADJ WW 572 WR 87 DAM PROD 4/90

CED	BW	WW	YW	M	STAY	MARB	REA
12.6	-2.3	46	65	12	19	0.1	0.77

This 3/4 blood Kingdom son is a really nice heifer bull that is smooth shouldered and clean made. He charts a really high CED and a negative BW and as a result we believe this strong topped bull is one of those you can trust to breed heifers with ease. Out of a really nice cow.

62



DR KINGDOM 34M

TATTOO: 34M SA#: 761983 DOB: 3/16/24

BLACK
HOMOZYGOUS POLLED
3/4 SA 1/4 AN

CBM BARE BACK 91G

*DJF KINGDOM 224K

DJF ZANETA 224Z

*MCD SF ANSWER 71 - 3545

*MJB 3545 ANSWER 197G

MJB SPANISH LADY 193B

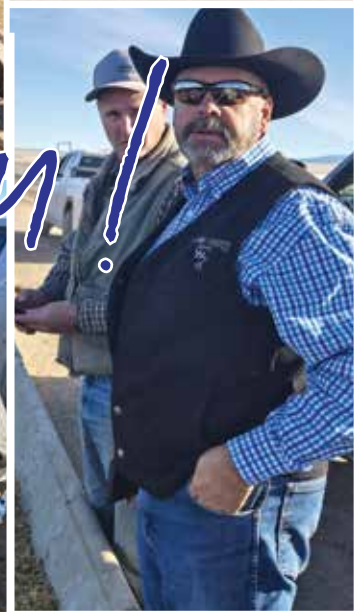
*SRS OUTBACK 0809X
HMW BARONESS 65D
*MAC TOPEKA 159T
*DJF WHISTLE 924W
CONNELLY ANSWER 71
SF MISS 975
TSB CHAPARRAL 93Z
MJB MS DAWN 136X



BW 89 ADJ WW 674 WR 102 DAM PROD 3/105

CED	BW	WW	YW	M	STAY	MARB	REA
12	0.3	62	97	17	19	0.3	0.74

Heifer Bull.



Thank You!



DOUBET RANCH
JIM & SHERRY DOUBET
1309 STATE HIGHWAY 345
RANCHESTER, WY 82839

