



ROBERTSHomes Limited

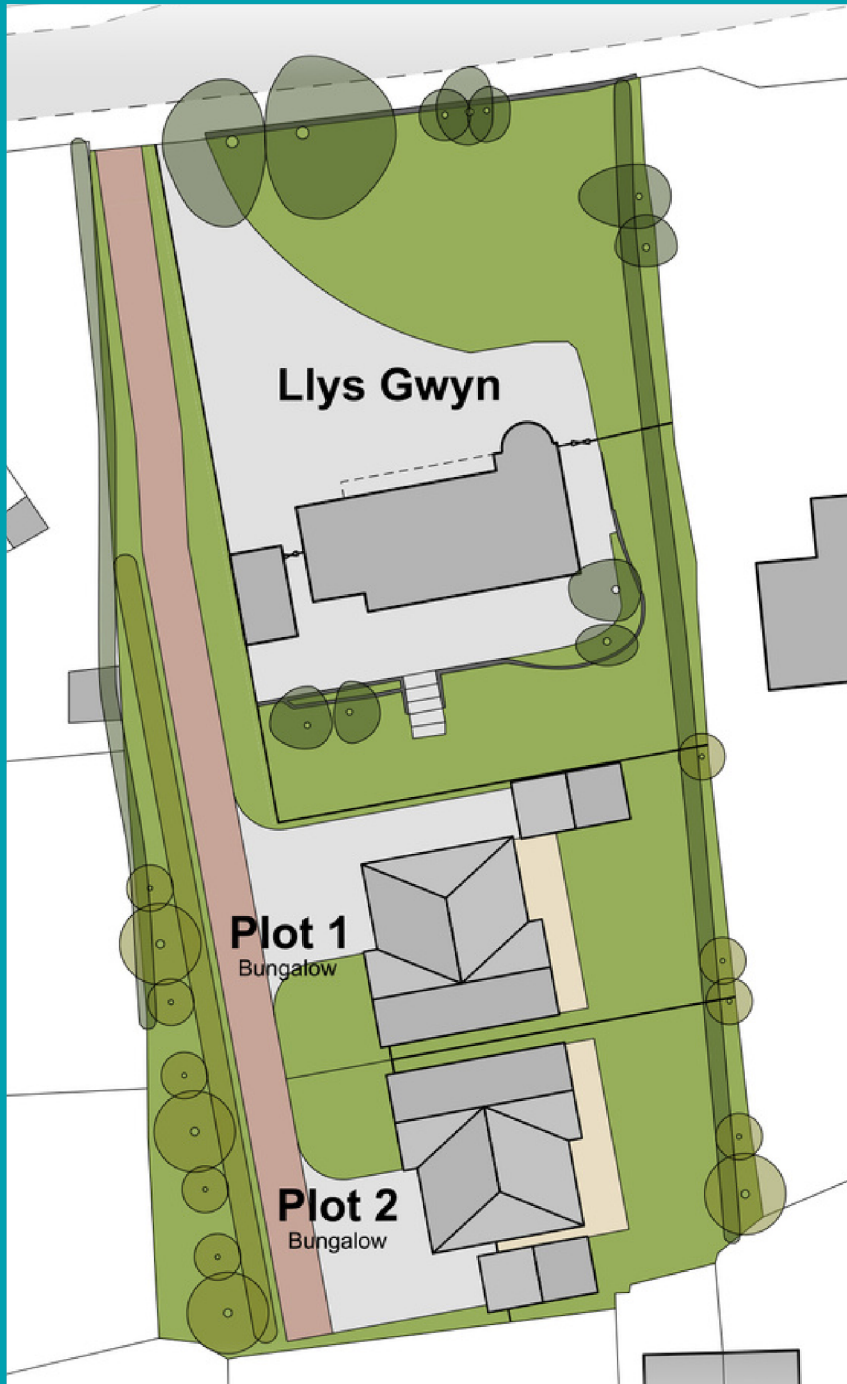
urbanbuildhomes

with
The **ROBERTS** Group



Llys Gwyn
BRYN GOODMAN

Specifically quoted in "The Sunday Times Best Places to Live" as
"Best address Bryn Goodman."



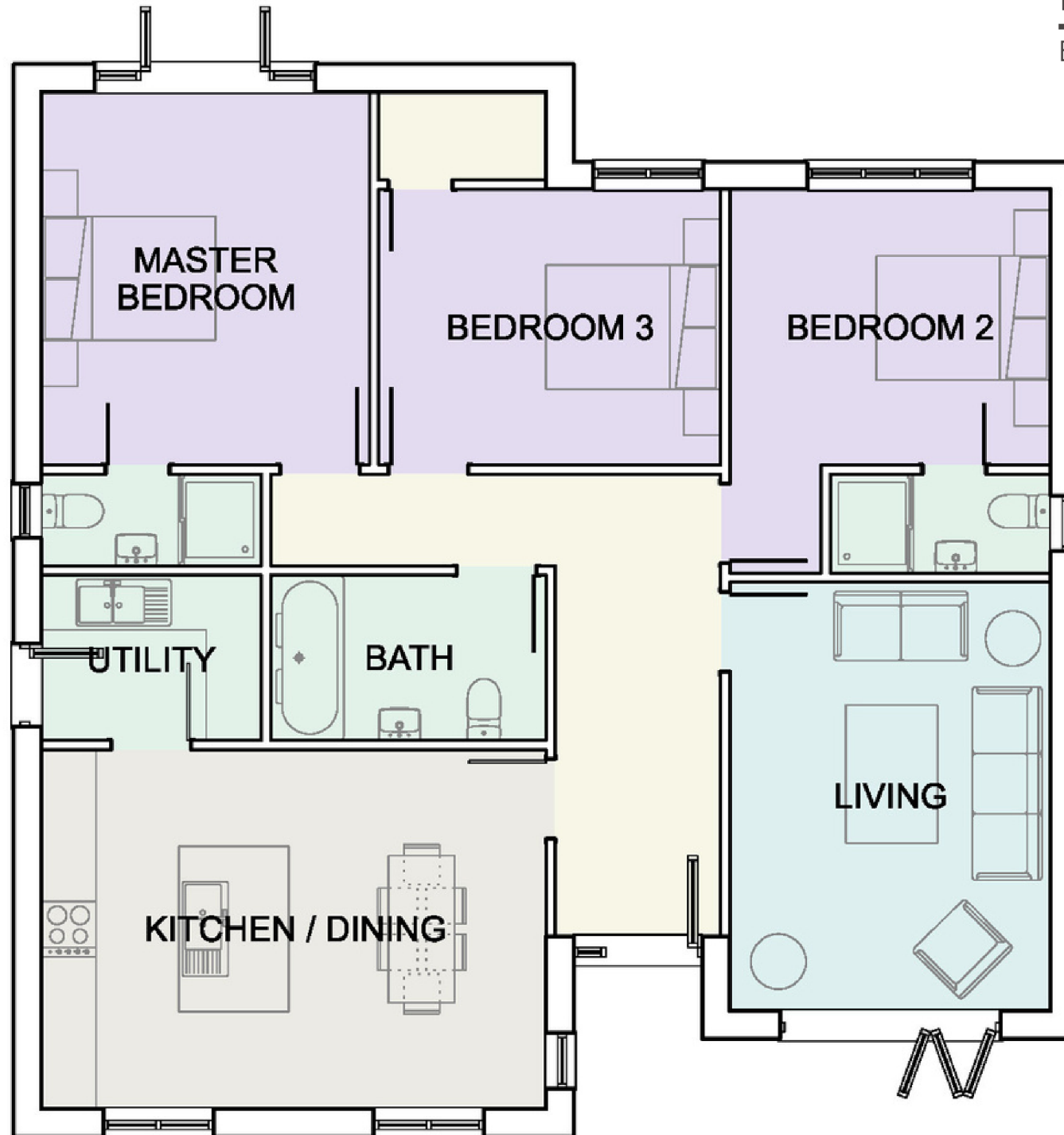
Llys Gwyn

BRYN GOODMAN

Specifically quoted in "The Sunday Times Best Places to Live" as "Best address Bryn Goodman."

"The feel of a country lane a few yards from the town centre."





What your Urbanbuild home includes

- Superb open plan kitchen/dining area.
- Formal living room.
- High specification kitchen with integrated appliances.
- Three double bedrooms.
- Master bedroom with en-suite.
- Large family bathroom.
- Very Private setting.
- Separate utility room.
- Detached garage with electric roller door.
- Brick pavements to driveway.
- Large patio area.
- Underfloor heating throughout.
- PVC-u double glazed windows.
- 10 year structural warranty.

MISREPRESENTATION ACT 1967

These particulars, whilst believed to be accurate, are for guidance only and do not constitute any part of an offer or contract. Intending purchasers should not rely on them as statements or representations of fact, but must satisfy themselves by inspection or otherwise as to their accuracy. No person in the employment of Urbanbuild or Roberts Homes Group has the authority to make or give any representations or warranty in relation to the property.

Urbanbuildhomes is a trading name of Roberts Homes Limited.

Llys Gwyn

BRYN GOODMAN

• Kitchen/Dining	5.50m x 3.80m
• Utility	2.40m x 1.80m
• Living Room	3.50m x 4.70m
• Bedroom One(Master)	3.60m x 4.15m
• Ensuite	2.40m x 1.00m
• Bathroom	2.90m x 1.80m
• Bedroom Two	3.50m x 3.05m
• Ensuite	2.30m x 1.00m
• Bedroom Three	3.65m x 3.05m
• Detached Garage	3.00m x 6.00m

Contact Us

 01824 707600

 01824 702090

 sales@urbanbuildhomes.co.uk

 www.urbanbuildhomes.co.uk



Wepre House Business Centre
Lon Parcwr Business Park
Ruthin, Denbighshire
LL15 1NJ