



FALCON LAKE

# ADC SCHEDULE



## MONDAY

9:00am - Check In  
(daily)  
9:30am - Introductions  
and team posters  
10:00am - Chapel &  
Small Groups  
11:00am - Stations  
11:45am - Lunch  
12:30pm- **Mini Golf!**  
2:00pm- **Ice Cream**  
3:00pm- Home Time  
(daily)

## TUESDAY

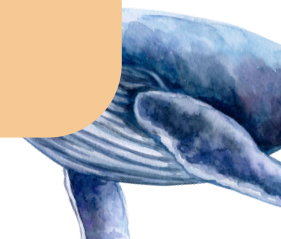
9:00am - Check In  
(daily)  
9:45am - Chapel and  
Small Groups  
10:45am - Stations  
11:30am- Team  
Challenge  
12:00pm- Lunch  
12:45pm- **Tye Dye!**  
2:00pm- **Water Games!**  
3:00pm- Home Time  
(daily)

## WEDNESDAY

9:00am - Check In  
(daily)  
9:45am - Chapel and  
Small Groups  
10:45am - Stations  
11:30am- Team  
Challenge  
12:00pm- Lunch  
12:30pm- **Beach!**  
3:30pm- Comedy Hour  
4:00pm- Movie  
5:00pm- Family BBQ

## THURSDAY

9:00am - Check In  
(daily)  
9:30am - Chapel and  
Small Groups  
10:30am - Stations  
11:15am- T-Shirt Signing  
12:00pm- Home Time,  
See you next year!





# PARENT INFO



## DROP OFF + PICK UP

Each morning when you bring your child to camp we will ask you to sign them in. We will give your kids a name-tag and we will write down the name of the person picking them up. At drop off we will meet you at the door and get you to tell us your name as well as the name of your child and then you will be on your way!

## PHOTOS AND SOCIAL MEDIA

Check out our Instagram and Facebook to see updates and photos of your children throughout the week (@adventurersdaycamp). At the beginning of the week, please check your email for a link and password to access all photos/videos from the week on SmugMug.

## WHAT DO I PACK FOR MY CHILD?

Send your child with a bathing suit, towel, socks, prefilled water bottle, lunch (except for Thursday), sunscreen, bug spray, a hat and comfortable shoes. It is best to pack all these things daily because sometimes plans change!



## WEDNESDAY FAMILY DINNER


The family dinner is a time where you can meet the staff, have dinner and get a sneak peek into what camp is like at ADC. This is also an opportunity to hear more about All Peoples Church and how you get connected. If you do not plan on attending, please pickup your child at 4:30. Everyone is welcome! Doors open at 4:45 & program runs till 6:00pm. We will have signups available on Monday & Tuesday at drop-off. Please be checked in and seated by 5:00pm.

## WEEKLY MEMORY VERSES

On Monday, your child will be sent home with a set (4) of bible verses for the week!

These verses correlate with our daily chapel sessions. If your child memorizes them during the week and recites them to their small group leader, they will be rewarded with a prize!

  @adventurersdaycamp

 (204) 253-8464

 adc@wefc.net

