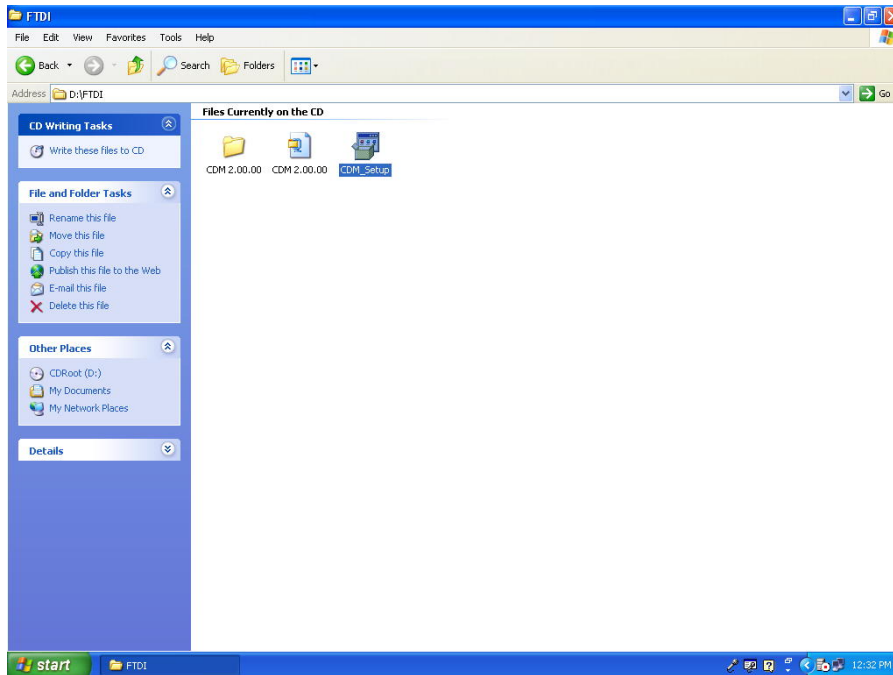


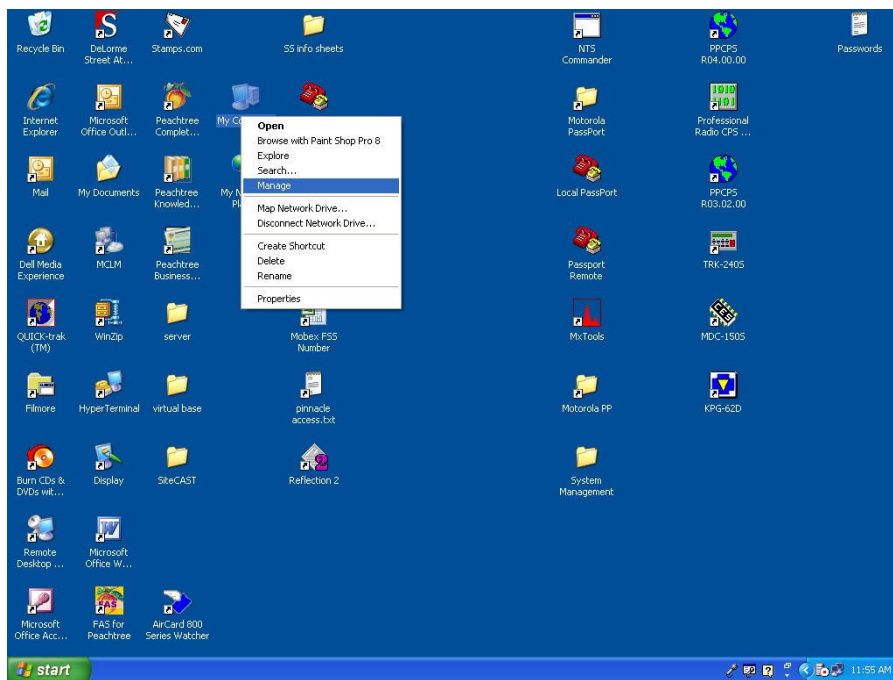
Roxi Gateway Driver Installation

Do not connect Gateway at this time. Insert the USB Drive, included in box.

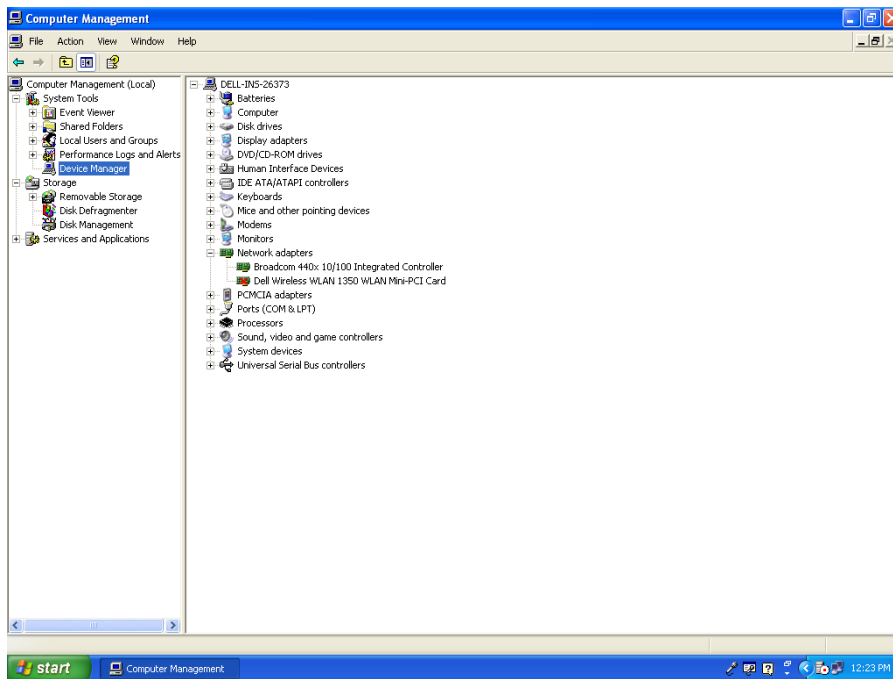


1. Double click FTDI folder.
2. Double click CDM_Setup to install driver. You should get message that drivers were successfully installed.
3. Connect Gateway using the supplied USB cable to an available USB port.
4. It is necessary to determine comport assigned to the device.

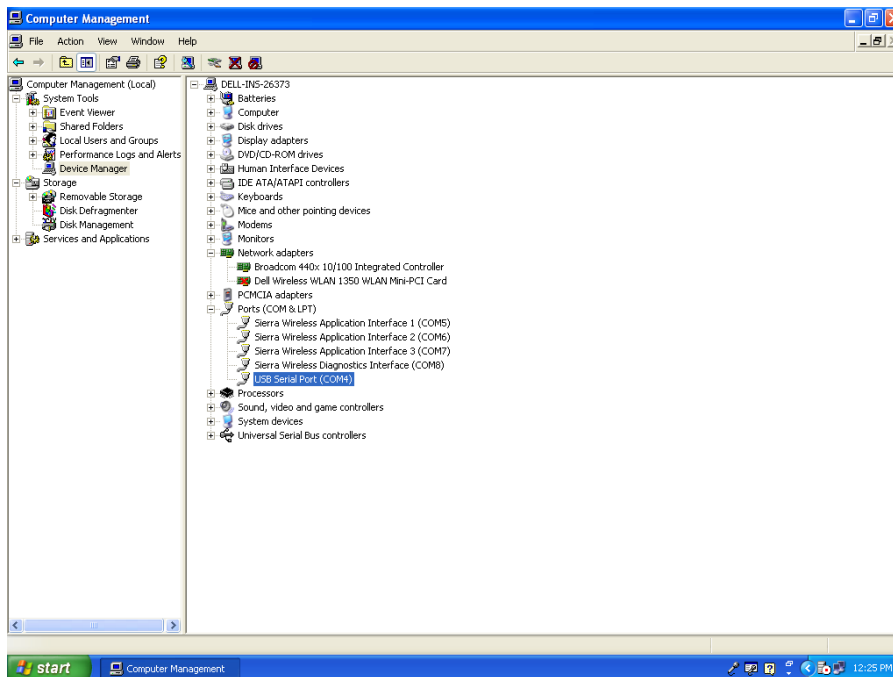
Determine Comport Assignment



1. Right Click My Computer.



2. Select Device Manager.



3. Open “Ports (Com &LPT)” tree.

4. View the port assignment for “USB Serial Port (ComX)” where X is the comport assigned to the Gateway.

This comport assignment can be changed if necessary and will be required if above Comport 9.

5. Comport will need to be changed in Gateway software to match the comport assigned by the computer.