

1/2 Packet Letter rate to "any...foreign country" via England (1877-83)



Notes: '7½' credited to England

Double weight Packet Letter to the U.S.
(1877-83)



Dated: 20 March 1881

Notes: backstamped London & New York

- St. Helena had no $\frac{1}{2}$ d. stamps until 1884. The correct foreign rate should have been $1/1\frac{1}{2}$ based on the Packet rate of 1/- + the UPU rate from England onward of $1\frac{1}{2}$ d. (i.e. $2\frac{1}{2}$ d. less the British internal rate of 1d.). So the double rate was $2/3$ despite a single rate of $1/2$. The red '1/3' represents twice $7\frac{1}{2}$ d. credited to Britain (her 6d. share of the Packet rate from St. Helena + the $1\frac{1}{2}$ d. UPU rate, x2).

"Bootleg" to the U.S. via England
during 1/2 Packet rate period (1877-83)



Dated: "USS Ticonderoga, St. Helena, June 22/79"

Rates: UPU International rate, $2\frac{1}{2}$ d., overpaid $\frac{1}{2}$ d. (stamps probably placed on cover in St. Helena)

Notes: backstamped Philadelphia

St. Helena did not join the UPU until 1896 and the rate to the U.S. at this time was 1/2. This cover was handcarried to England to avoid the extra $1\frac{1}{2}$ d. charge, a late example of "bootleg" carriage.

Packet Letter to France via England, unpaid and fined
during the 1/2 rate period (1877-1883)



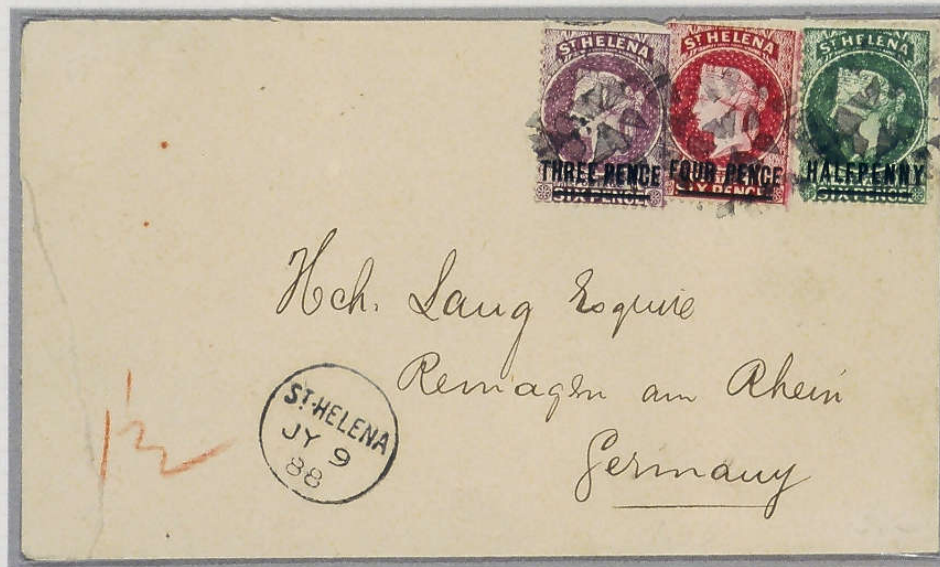
Dated: 16 July 1883

Rates: black '6'(d.) due Britain ('T') = 60 (centimes)
Fine = postage due 60 "
To collect 1F20

Notes: Apparently, only British share of 1/- Packet rate from St. Helena to England (6d.) was charged, not also the $1\frac{1}{2}$ d. UPU rate from Britain to France, probably an error.

backstamped London

7½d. Packet Letter rate to "any...foreign country" via England (1884-96)



Notes: '1½' credited to England for UPU international rate