

Tip 189 – There is more than one way to show plate blocks in a First Day Cover exhibit

First Day Cover exhibitors usually include information and material about the development of the stamp they are exhibiting. The discussion of stamp production frequently includes plate blocks for each position for each of the plate numbers that were available on the day of issue. These plate blocks are often arranged in “miniature panes” with four matching plate blocks on a page showing all positions (as shown on the left side of the exhibit page in Figure 189-1.)



Figure 189-1

A smaller number of exhibitors, such as Andrew McFarland whose page is shown in Figure 189-2, overlap the plate blocks to create a different visual image and to save space on the page. It is the plate number and position that is important to the First Day Cover exhibit, not each of the stamps in the plate block. On this page, Andrew did something I had never seen before: he combined diagonal overlapping with vertical overlapping for an attractive and eye-catching presentation. It is a great page.

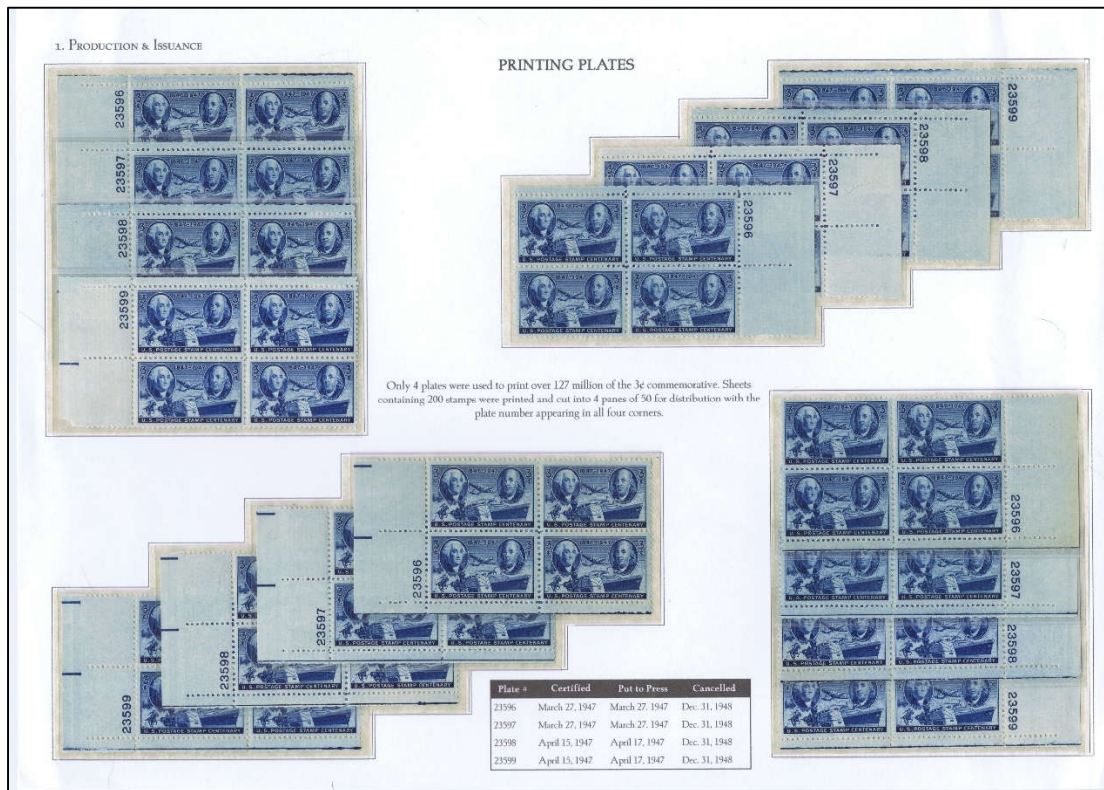


Figure 189-2