



REALEYES
DESIGN

INFO@REALEYES-DESIGN.COM.AU
WWW.REALEYES-DESIGN.COM.AU



*Regardless of who our clients are, good design
is what motivates us –
every time.*



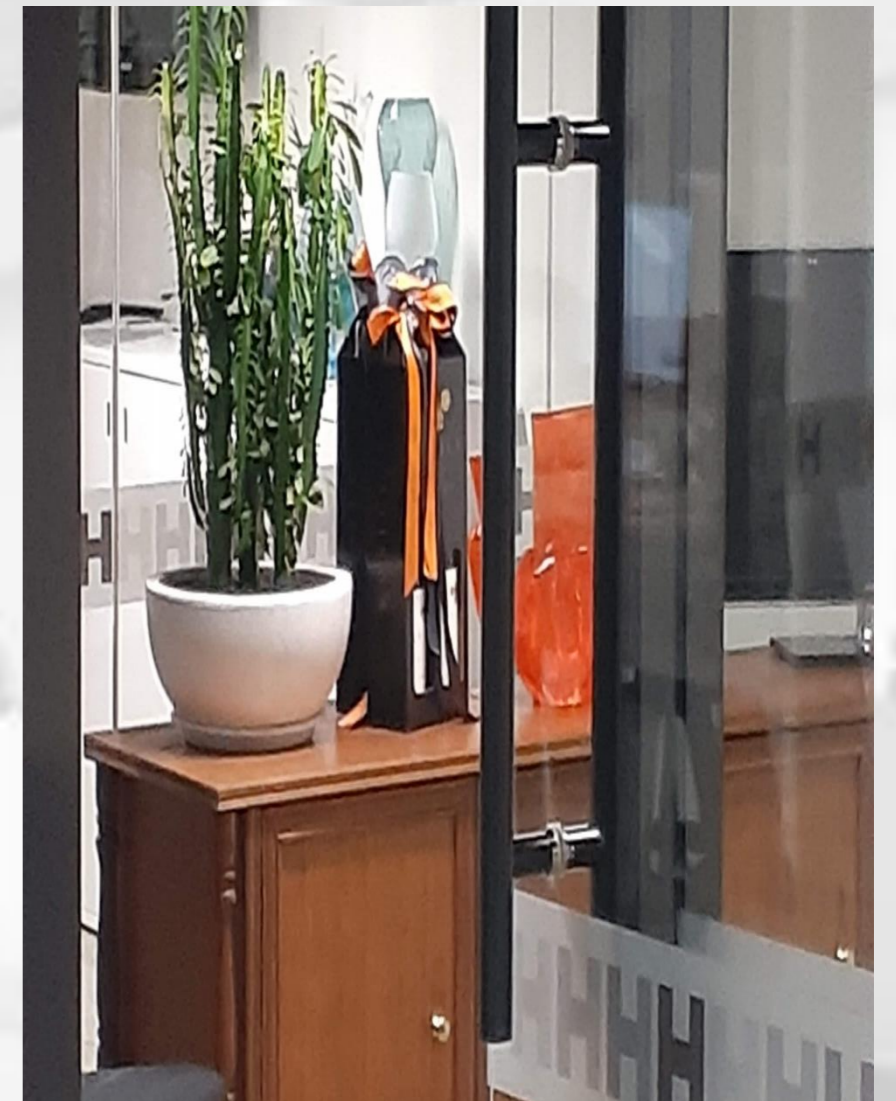
*RETAIL
INTERIOR
DESIGN*

The customer experience and how they interact with your product is key to all successful retail interiors. Shop front details and interesting materials all add up to make eye catching elements.



*HOSPITALITY
INTERIOR
DESIGN*

We focus on the look and feel of your café or restaurant design and advise on space planning, furniture selection, materials and visual features that will keep bringing the customers back.



*WORKPLACE
INTERIOR
DESIGN*

Modern Workplace Interior Design is complex and requires a thorough assessment of office culture and tailoring a solution that best fits, to enhance the goals of each individual business.



REALEYES
DESIGN

INFO@REALEYES-DESIGN.COM.AU
WWW.REALEYES-DESIGN.COM.AU

Budget Review

- We develop your budget with you from the very beginning of a project, eliminating the potential for over-runs and variations.



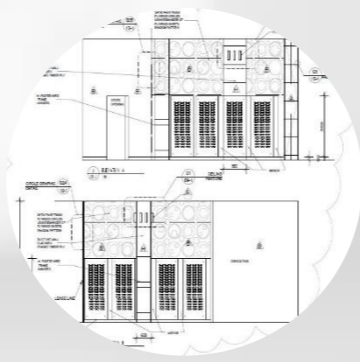
Concept Design

- Our research into form, function and flow ensure your outcomes are at the forefront of all our concept interiors.



Documentation

- Our practical knowledge of materials, construction methods and standards, ensure the overall build-ability of the project.



Project Management

- Statutory approvals, costs and quality are managed within your building time frame.



Delivery

- All furniture, fittings and equipment are delivered to schedule so that everything is ready to start.



Our Trusted partners

We are able to call on the following professionals to work as part of our team:

- Graphic designers.
- Services consultants.
- Hospitality consultants.
- Compliance / surveyors.
- Structural engineers.

WHO ARE REALEYES DESIGN ...

- We are a team of interior designers with over 30 years experience in the design industry, who are able to manage your project from start to finish,
- Originally founded by Andrea Webster in 2008, Realeyes Design has developed a name for working with clients who need a hand holding approach.
- We work in the areas of Hospitality, Retail and Workplace Interior Design.

WHY USE REALEYES DESIGN ...

- We have a team of trusted professionals that we co-ordinate to give our clients the peace of mind they need.
- We partner with our clients from start to finish, ensuring that quality and design is managed at every stage against the project budget.
- We will deliver great interior design with quality outcomes.

WHAT REALEYES DESIGN CAN OFFER ...

- Fixed design fees with a competitive tender process for build costs.
- A Sketch and Estimate for a Design and Construct solution
- An established budget before putting pen to paper.
- A fee structure that is cost effective and adaptable depending on what your project requires.
- Membership of Industry Associations to ensure integrity and professional standards.



REALEYES
DESIGN

INFO@REALEYES-DESIGN.COM.AU
WWW.REALEYES-DESIGN.COM.AU



KEY PERSONNEL

ANDREA WEBSTER

Design Director – REALEYES DESIGN

QUALIFICATIONS

BA (Hons) Three Dimensional Design (Furniture) School of Industrial Design,
Leicester Polytechnic, Leicester, England 1989

PROFESSIONAL ACCREDITATION

Member - Design Institute of Australia

Designer Member – Australian Shop and Office Fitting Industry Association

Andrea has experience in both large and small projects for commercial clients, having been involved in all aspects of design including space analysis and planning, building floor plate assessment, conceptual design, product selection, detailing, working drawings, tendering and ensuring a job runs smoothly on site. She has worked as team leader and interior design consultant in London and Perth, co-ordinating all members of the design team such as electrical, mechanical and structural consultants. Her experience on commercial projects includes clients in the legal, hospitality, financial, media, health, retail, government and technology sectors.

PERSONAL PHILOSOPHY

"I am inspired by clever solutions to everyday problems. I believe that design should be practical as well as aesthetic, with attention always focused on answering the brief."

ROLES AND RESPONSIBILITIES

- Client Interface
- Management of Budget
- Overseeing all aspects of design and documentation
- Co-ordination with Consultants
- On-site co-ordination with builders
- Day to day management of Realeyes Design



DIEGO NIETO

Designer Draftsperson – REALEYES DESIGN

QUALIFICATIONS

Architectural Degree – La Salle University, Columbia
Cert IV Building Design

Diego provides valuable architectural and drafting design skills to Realeyes Design, supporting the business with his technical knowledge of construction. He is also studying photography and brings these additional skills to his work.



JEFF BANDI

Interior Designer – REALEYES DESIGN

QUALIFICATIONS

Bachelor of Applied Science (Interior Architecture) – Curtin University
Advance Diploma Interior Design

Jeff's view of design incorporates a social perspective along with critical thinking. His skills include attention to detail and a thoroughness that benefits the client and the business.



REALEYES
DESIGN

INFO@REALEYES-DESIGN.COM.AU
WWW.REALEYES-DESIGN.COM.AU