

This plan is for marketing purposes only. Areas, locations and dimensions are approximate and subject to change during construction.



Farm Village - Jacob

Ipswich

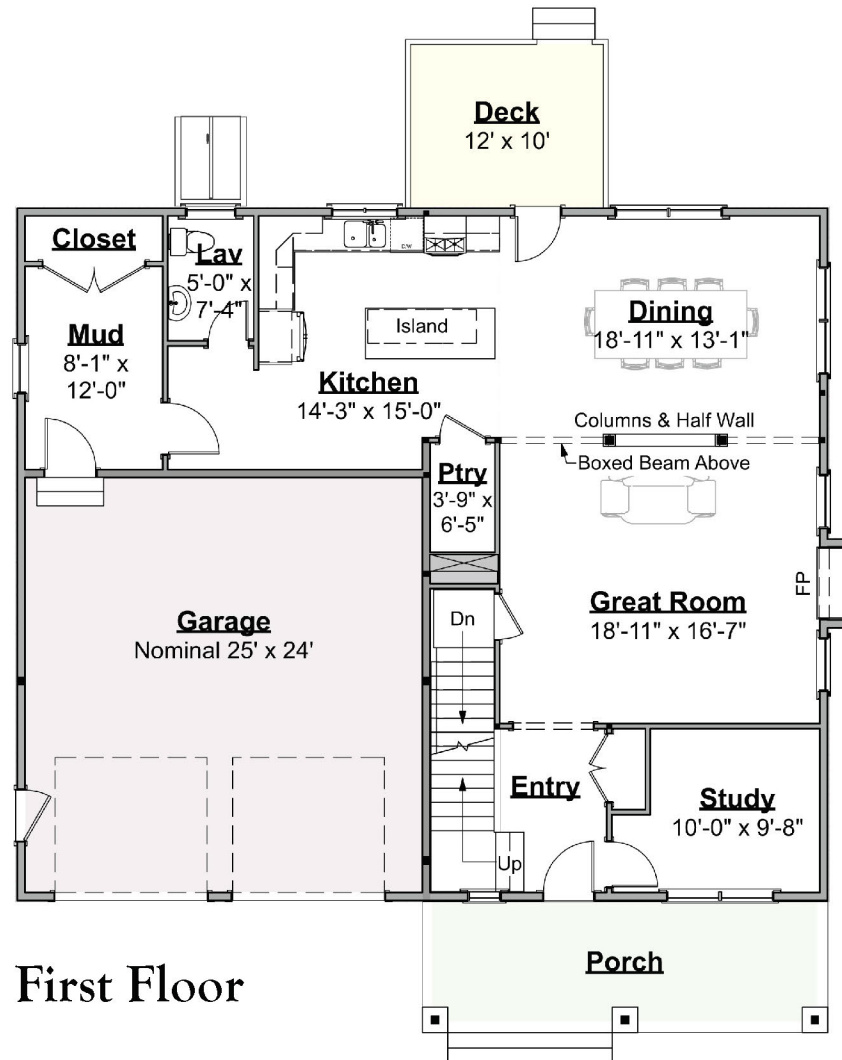
8/6/2019



S Y M E S®

50 DODGE STREET · BEVERLY, MASSACHUSETTS 01915 · P: 978-922-5300 · F: 978-922-5444 · www.symesassociates.com

This plan is for marketing purposes only. Areas, locations and dimensions are approximate and subject to change during construction.



Approximate Areas:

1st Floor	1,368 s.f.
2nd Floor	1,589 s.f.
Total	2,957 s.f.

Farm Village - Jacob

Ipswich

8/6/2019



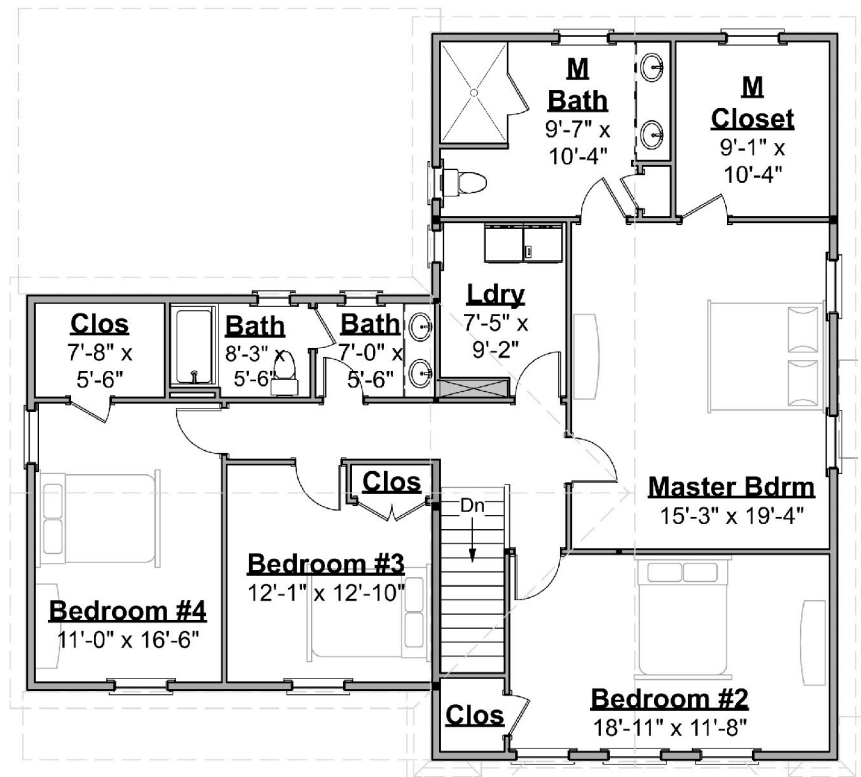
SYMES®

50 DODGE STREET · BEVERLY, MASSACHUSETTS 01915 · P: 978-922-5300 · F: 978-922-5444 · www.symesassociates.com

This plan is for marketing purposes only. Areas, locations and dimensions are approximate and subject to change during construction.

Approximate Areas:

1st Floor	1,368 s.f.
2nd Floor	1,589 s.f.
Total	2,957 s.f.



Second Floor

Farm Village - Jacob

Ipswich

8/6/2019



S Y M E S[®]

50 DODGE STREET · BEVERLY, MASSACHUSETTS 01915 · P: 978-922-5300 · F: 978-922-5444 · www.symesassociates.com

This plan is for marketing purposes only. Areas, locations and dimensions are approximate and subject to change during construction.

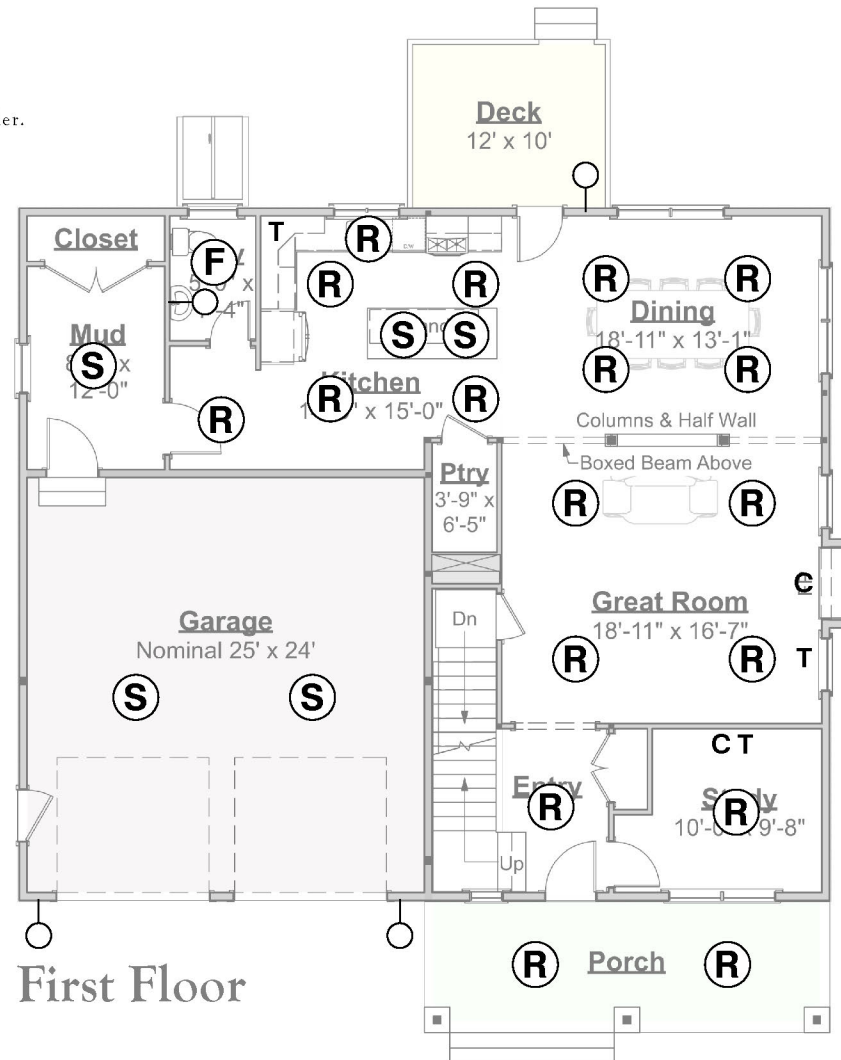
NOTE:
Recessed, fan, and garage fixtures provided by builder.
Other fixtures to be provided by buyer.

Approximate Areas:

1st Floor	1,368 s.f.
2nd Floor	1,589 s.f.
Total	2,957 s.f.

Lighting Plan

- (R) RECESSED FIXTURE
- (S) SURFACE MOUNT FIXTURE
- (F) FAN / LIGHT FIXTURE
- WALL MOUNT FIXTURE
- T TELEPHONE
- C CABLE



Farm Village - Jacob

Ipswich

8/6/2019



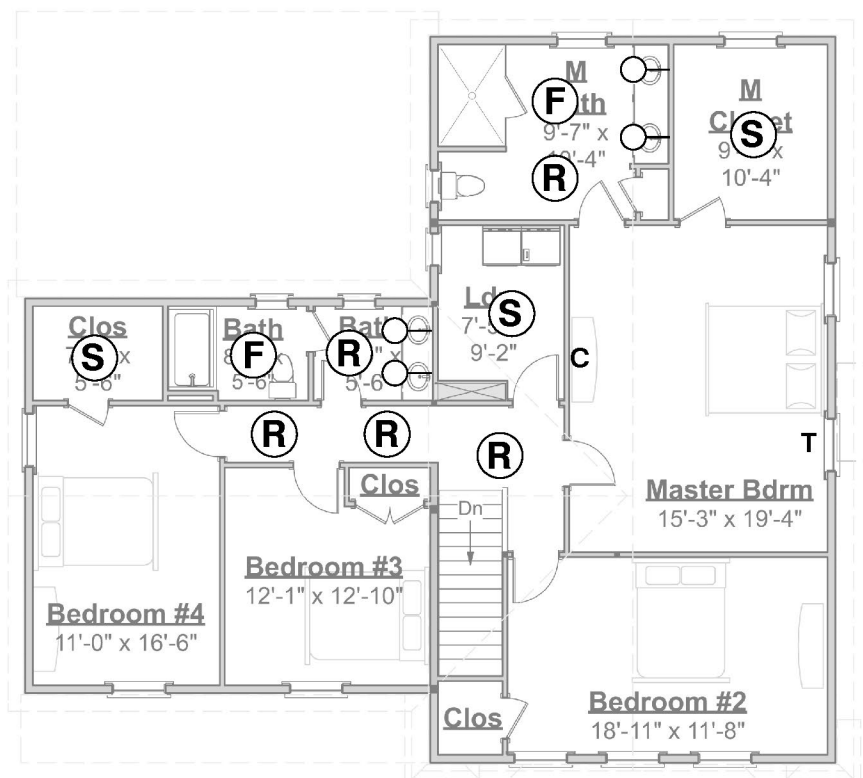
SYMES®

50 DODGE STREET · BEVERLY, MASSACHUSETTS 01915 · P: 978-922-5300 · F: 978-922-5444 · www.symesassociates.com

NOTE:
Recessed, fan, and garage fixtures provided by builder.
Other fixtures to be provided by buyer.

1st Floor	1,368 s.f.
2nd Floor	1,589 s.f.
Total	2,957 s.f.

(R) RECESSED FIXTURE
(S) SURFACE MOUNT FIXTURE
(F) FAN / LIGHT FIXTURE
—○ WALL MOUNT FIXTURE
T TELEPHONE
C CABLE



Second Floor

Farm Village - Jacob

Ipswich

8/6/2019

SYME S[®]

50 DODGE STREET · BEVERLY, MASSACHUSETTS 01915 · P: 978-922-5300 · F: 978-922-5444 · www.symesassociates.com