

This plan is for marketing purposes only. Areas, locations and dimensions are approximate and subject to change during construction.



Farm Village - Harper - GARAGE LEFT

Ipswich
9/9/2022

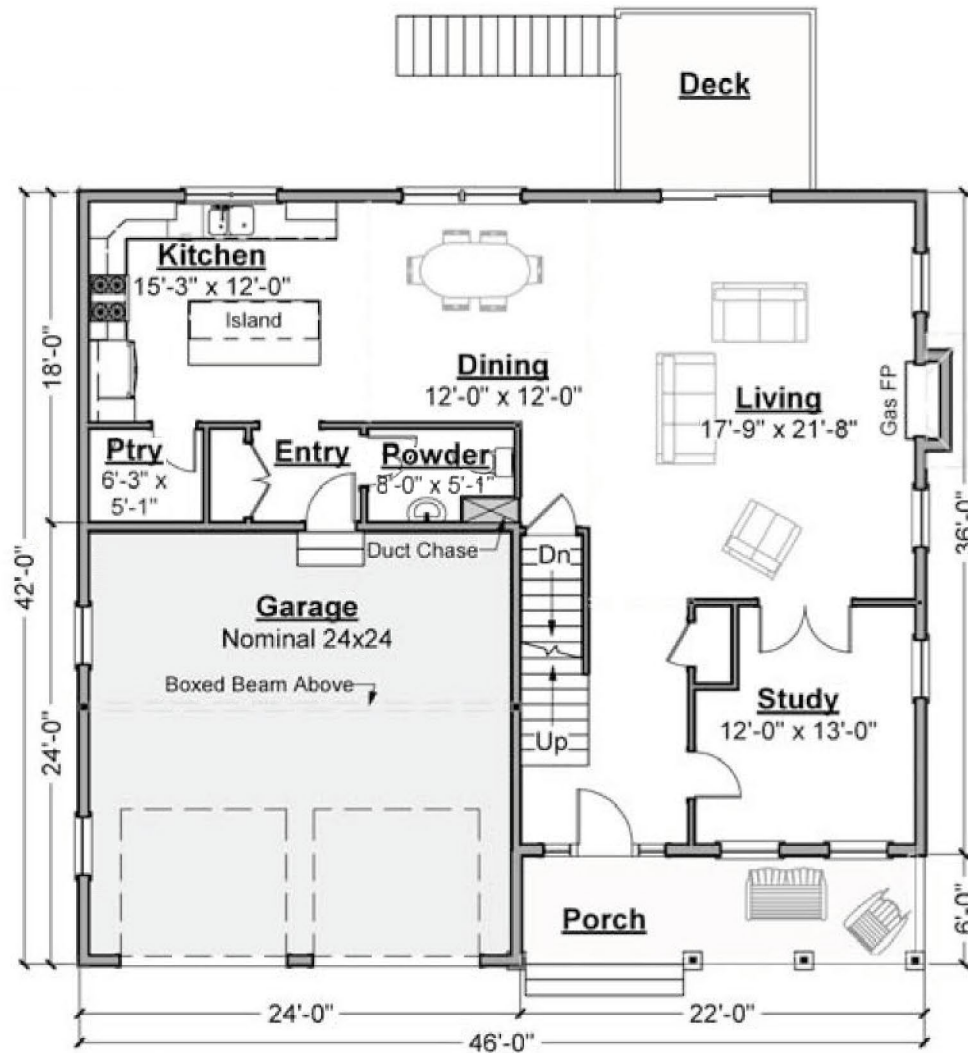


S Y M E S[®]

50 DODGE STREET · BEVERLY, MASSACHUSETTS 01915 · P: 978-922-5300 · F: 978-922-5444 · www.symesassociates.com

This plan is for marketing purposes only. Areas, locations and dimensions are approximate and subject to change during construction.

Approximate Areas:	
1st Floor	1,250 s.f.
2nd Floor	1,620 s.f.
Total	2,870 s.f.



First Floor

Farm Village - Harper - GARAGE LEFT

Ipswich

9/9/2022

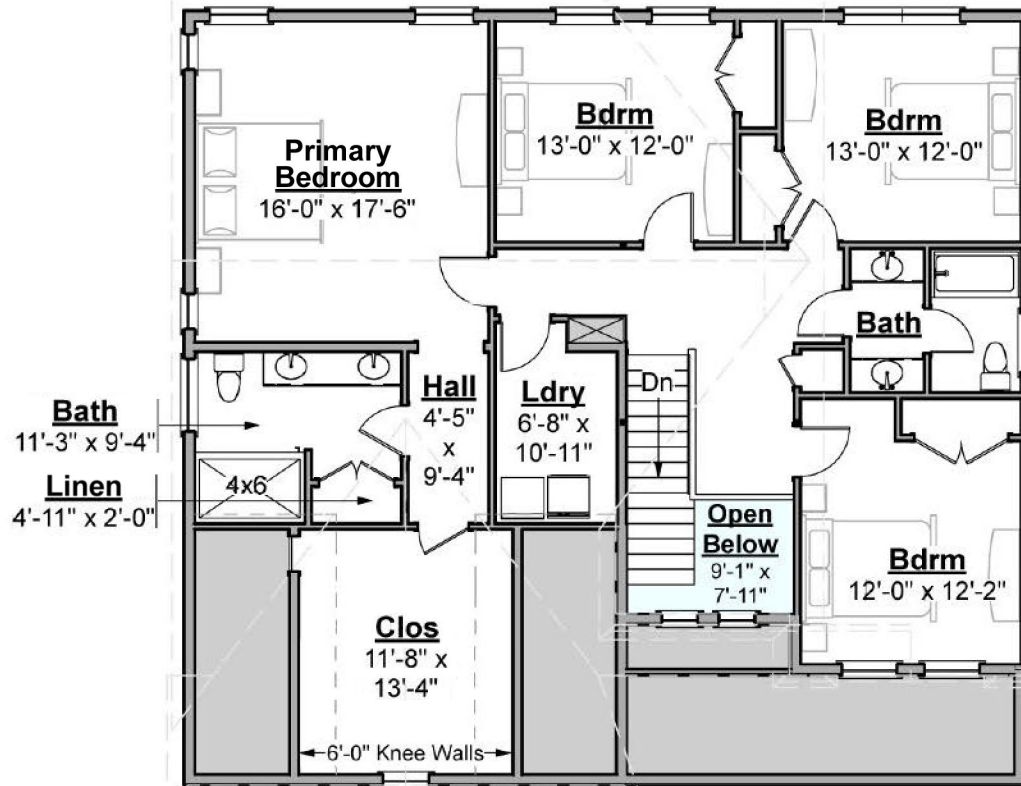


SYMES®

50 DODGE STREET · BEVERLY, MASSACHUSETTS 01915 · P: 978-922-5300 · F: 978-922-5444 · www.symesassociates.com

This plan is for marketing purposes only. Areas, locations and dimensions are approximate and subject to change during construction.

Approximate Areas:	
1st Floor	1,250 s.f.
2nd Floor	1,620 s.f.
Total	2,870 s.f.



Second Floor

Farm Village - Harper - GARAGE LEFT

Ipswich

9/9/2022



S Y M E S®

50 DODGE STREET · BEVERLY, MASSACHUSETTS 01915 · P: 978-922-5300 · F: 978-922-5444 · www.symesassociates.com

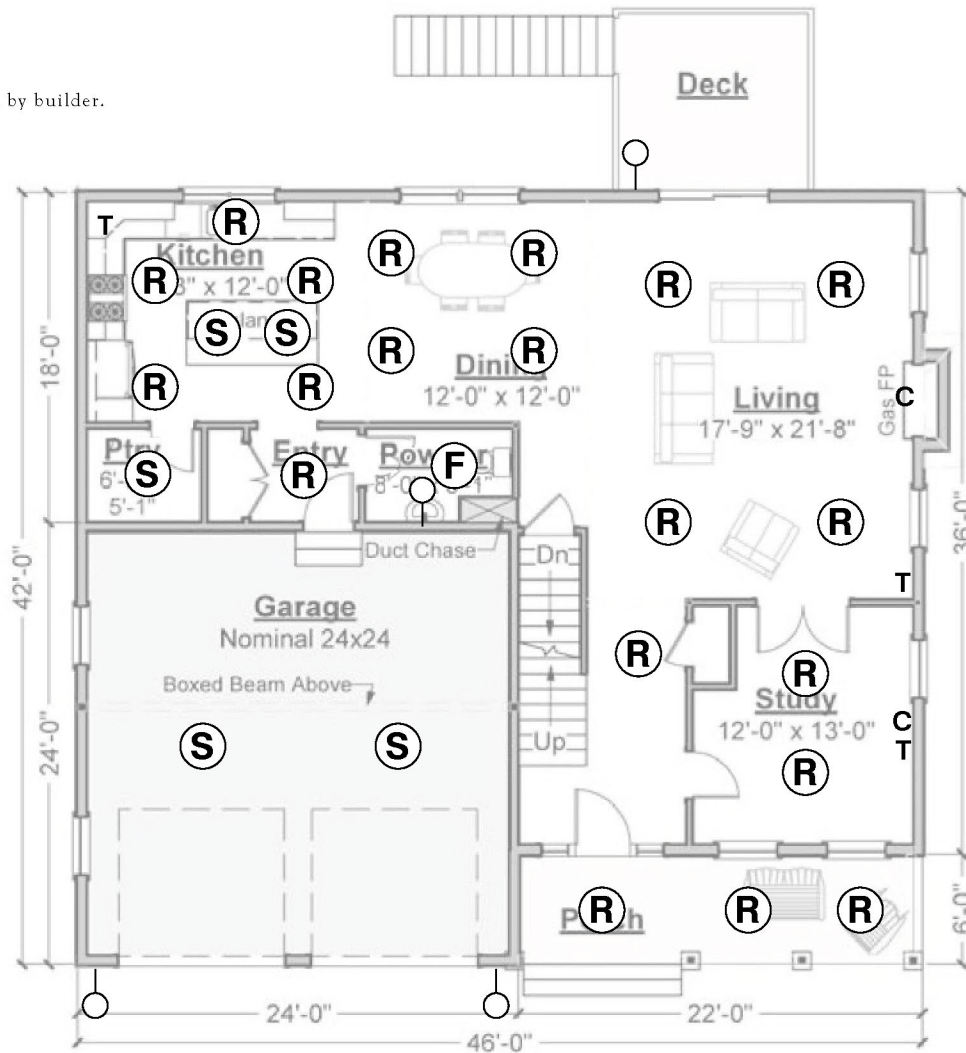
This plan is for marketing purposes only. Areas, locations and dimensions are approximate and subject to change during construction.

NOTE:
Recessed, fan, and garage fixtures provided by builder.
Other fixtures to be provided by buyer.

Approximate Areas:
1st Floor 1,250 s.f.
2nd Floor 1,620 s.f.
Total 2,870 s.f.

Lighting Plan

- (R)** RECESSED FIXTURE
- (S)** SURFACE MOUNT FIXTURE
- (F)** FAN / LIGHT FIXTURE
- WALL MOUNT FIXTURE
- T** TELEPHONE
- C** CABLE



First Floor

Farm Village - Harper - GARAGE LEFT

Ipswich

9/9/2022



SYMES®

50 DODGE STREET · BEVERLY, MASSACHUSETTS 01915 · P: 978-922-5300 · F: 978-922-5444 · www.symesassociates.com

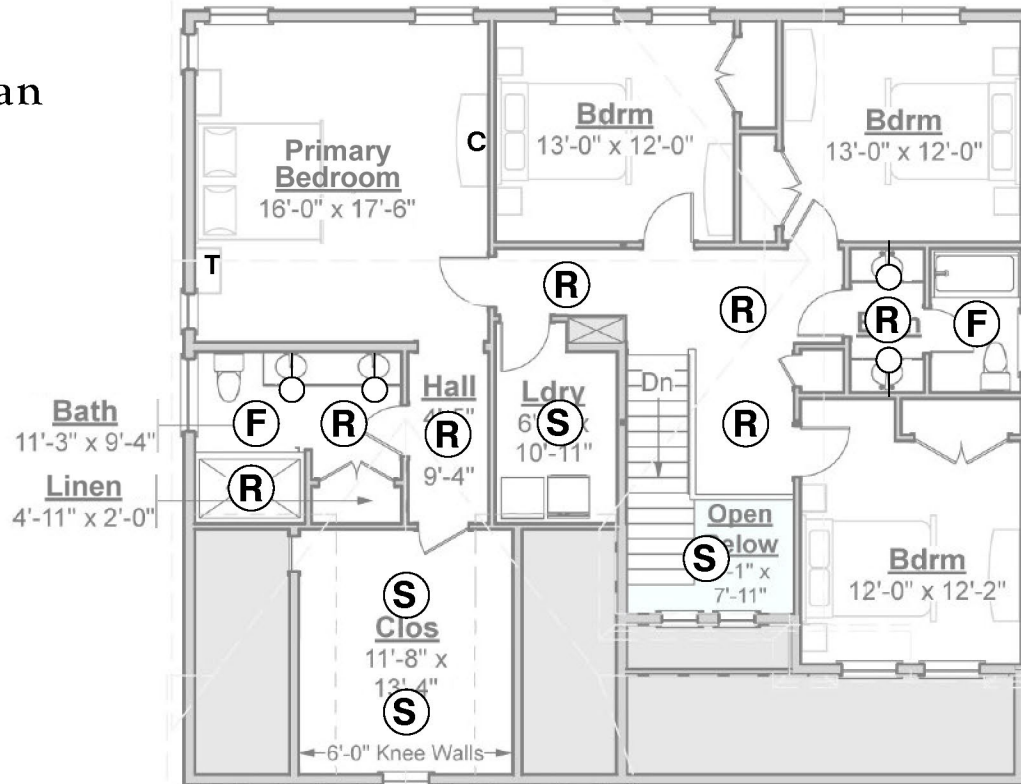
This plan is for marketing purposes only. Areas, locations and dimensions are approximate and subject to change during construction.

NOTE:
Recessed, fan, and garage fixtures provided by builder.
Other fixtures to be provided by buyer.

Approximate Areas:	
1st Floor	1,250 s.f.
2nd Floor	1,620 s.f.
Total	2,870 s.f.

Lighting Plan

- (R) RECESSED FIXTURE
- (S) SURFACE MOUNT FIXTURE
- (F) FAN / LIGHT FIXTURE
- WALL MOUNT FIXTURE
- T TELEPHONE
- C CABLE



Second Floor

Farm Village - Harper - GARAGE LEFT

Ipswich

9/9/2022



S Y M E S®

50 DODGE STREET · BEVERLY, MASSACHUSETTS 01915 · P: 978-922-5300 · F: 978-922-5444 · www.symesassociates.com