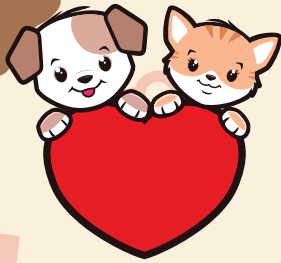


Pet Lovers Weekend

8/8 - 8/10



FRIDAY

Movie: 6:30 - 8pm

Meet at the activity building for the movie:
Secret Life of Pets



Bingo - 8pm

Head over to the Bingo pavilion and test your luck! Will you be one of the lucky winners?
Card sales start at 7:30.

SATURDAY

Donuts: 9:30 - 10:30am

Meet by the activity building and decorate a donut with all the toppings your heart desires! (\$)

Humane Society: 11-2pm

Head behind the Lodge and see all of the wonderful pets up for adoption!

Water Wars: 11:30am

Meet down by the water wagon for a water war! Water balloons and squirt guns will be provided. Water balloon filling starts at 11:00am.

Bags Tournament: 12:30pm

Head down to the lower pavilion for a bags tournament! (\$)

Doggy Play Date: 1:00pm

Meet down at the dog park with your furry friend for a giant doggy play date!

Scavenger Hunt: 1:30pm

Stop up at the Lodge for the first clue, follow the clues to get a prize!

Jukebox Bingo: 2:00PM

A fun twist on traditional bingo. We play clips of popular songs and you mark off the song title on your bingo card. Sing along, dance in your seat and try to be the first to shout BINGO! Card sales start at 1:30pm at the Bingo pavilion.

Paw Prints: 3:00pm

Meet behind the Lodge with your furry friend and lets make a paw print craft!

Hayride: 5:30pm

Head down by the lower pavilion and hop on the hay wagon for a ride around the park. Don't forget to yell "HEYY!" to all of our friends you see along the way!

Golf Cart Poker: 6:00pm

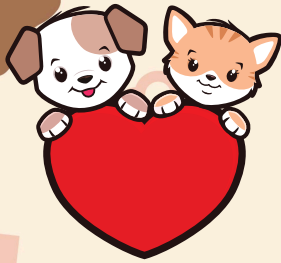
Meet down by the lower pavilion on your golf cart. You will travel around to different sites and pick a card. Best hand wins! (\$)

Decades Band: 7-10:30pm

Head down to the lower pavilion and dance the night away with Decades Band!

Pet Lovers Weekend

8/8 - 8/10



Sunday

Donuts: 9:30 - 10:30am

Meet by the activity building and decorate a donut with all the toppings your heart desires! [\$]

Trivia: 11am

Meet at the activity building for some animal trivia!

Lodge Hours

Mon - Wed: 9-5

Thurs: 9-7

Friday & Sat: 9-9

Sunday: 9-3

The Well Bar & Grill

Mon - Wed: 9-5

Thurs: 9-7

Fri & Sat 9-9

Sunday 9-3

Pool Hours

****WEATHER PERMITTING****

Upper Pool: 10 AM - 7 PM

Lower Pool & Pond: 10 AM - 8 PM

****Quiet time starts at 11:00 PM. Make sure you are safely back at your site or security will get you! Help us keep the park clean by cleaning up after yourself and your pets. Overnight guests in cabins and RV sites, please dispose of your trash in one of the dumpsters located throughout the park.****

