



# Espresso



Fitness **Evolved**





Your all-new Expresso Bike raises the bar for indoor cycling, yet again. With interactive road racing, studio cycling, and HIIT gaming all in one beautiful machine, your Expresso Bike gives you the world's best workout however you like it.

**The View is Spectacular** The fully-immersive, 26.5 inch HD touchscreen is the largest available, connecting you to your workout like never before.

**Handlebars That Turn...Heads** State of the art handlebars turn left and right, driving your workout experience and making each ride unique.

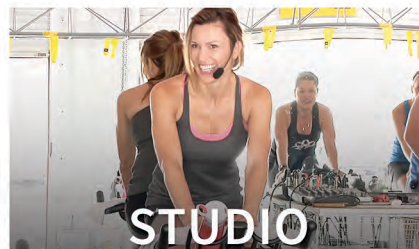
**Viva la Resistance** The breakthrough magnetic resistance drive simulates terrain with incredible accuracy. Nothing is closer to the outdoors.

**Designed to Fit You** Ergonomically set for maximum comfort and total customization. Compatible with your favorite third party saddle and pedals.

**Beautifully Built to Last** Understated yet elegant. Designed to stand out and fit in. The laser-cut steel frame, military grade electronics, and battle tested drivetrain ensure maintenance free workouts for years to come.



Immerse yourself in 300+ miles of stunning interactive roads. From snowy mountains to Mayan ruins, riding your Expresso Bike is just like riding outdoors...minus the helmet and cold weather gear.



Kick your training up a notch with Studio SWEAT onDemand. Cat Kom and her elite group of expert trainers are here to motivate you with new classes every week.



Play the most advanced, and FUN, fitness games designed for High Intensity Interval Training (HIIT). Short sprints, rugged terrain, and friendly competition will get you sweating and smiling.

Dimensions: 47x24x62 in. • Weight: 165 lbs. • Power: 100-240V AC 50/60 Hz

Touchscreen: 26.5 in. with full 1080p resolution • Workout Options: Roads, Studio, Games, TV, Manual • Resistance Levels: 30 • Max Watts: 800

Connectivity: Wireless WiFi 802.11n+ / Wired Gigabit LAN+