



## **Stainless Steel - SQUARE TANDOOR**

**NSF CERTIFIED**

Starting @ \$ 1550.00

Basic Burner - 10 Skewers - Gaddi

TND002 - 28 L x 28 W x 37 H - Mouth-13.5

TND003 - 30 L x 30 W x 37 H - Mouth- 14

TND004 - 32 L x 32 W x 37 H - Mouth- 15

TND005 - 34 L x 34 W x 37 H - Mouth- 16

TND006 - 36 L x 36 W x 37 H - Mouth- 17

*(Specs in inches / Height is including 5 : wheels)*

**Shell** - Terracotta clay

**Body** - Stainless steel 304 grade-18 gauge Steel - sides / 16 gauge steel -top)

**INSULATION**- Double insulation with high temperature resistant glasswool



## PORTABLE S/STEEL TANDOOR

TNC010 - 23"D x 37"H- (KL)- \$ 790.00

TNC011 - 23"D x 37 "H- (BO)- \$ 750.00

## HOME TANDOOR

TNH052 - 18"D x 24"H - \$ 490.00





## GARDEN TANDOOR

W/ Skewers Stand & Shelves

Skewers Included

TNG050 - 26" x 38" x 36"- [\\$ 890.00](#)

TNG051 - 24" x 36" x 36"- [\\$ 890.00](#)



**g Tandoor.**  
/heels



## PORTABLE M/S TANDOOR

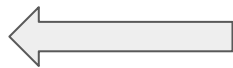
Skewers -Gaddi -Sheera-Trolley

.Included

TNC001 - MS- 23 x 37 "

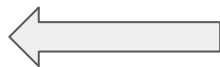
TNC002 - MS -S/STEEL TOP- 23 x 37"- \$650.00

TNC005 - MS--W/Gas Fitting 23 x 37 " - \$ 790.00



**Fully Assembled Burner**  
With Valves & Pilot.

Just Connect to Gas Line



**Basic Burner**  
Assembly required  
Valve Pilot Kit Required

Step 1



Insert rings  
and pipes  
from Inside

Step 2



Insert Valve  
Assembly  
from outside

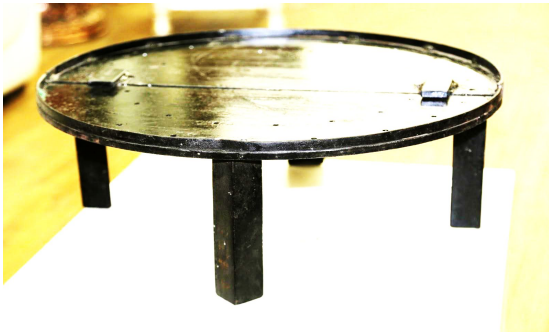
Step 3





TNM085 - TANDOOR MITTI ( CLAY)

\$ 32.90



Burner / Iron Plate For Tandoor

\$ 149.00

TNB002 - 13 " Dia- For Catering Tnd

TNB004 - 16 " Dia- For 28 " Tandoor

TNB006 - 18 " Dia -For 30 " Tandoor

TNB007 - 20 " Dia - For 32 " Tandoor

TNB008 - 21 " Dia - For 32 " Tandoor

TNB009 - 22 " Dia - For 34 " Tandoor

TNB010 - 24 " Dia - For 36 " Tandoor

## TANDOOR SKEWER

TNS088 -Round 4MM

TNS089 - Round - 6MM

TNS090 - Round- 8MM

TNS091 - Square- 4mm

TNS092 - Square- 6MM

TNS093 - Square- 8MM

TNS094 - JODI - Naan/Roti pair

TNS096 - Round -4 MM w/stopper

TNS099 - Round- 6mm w/ Stoppe

