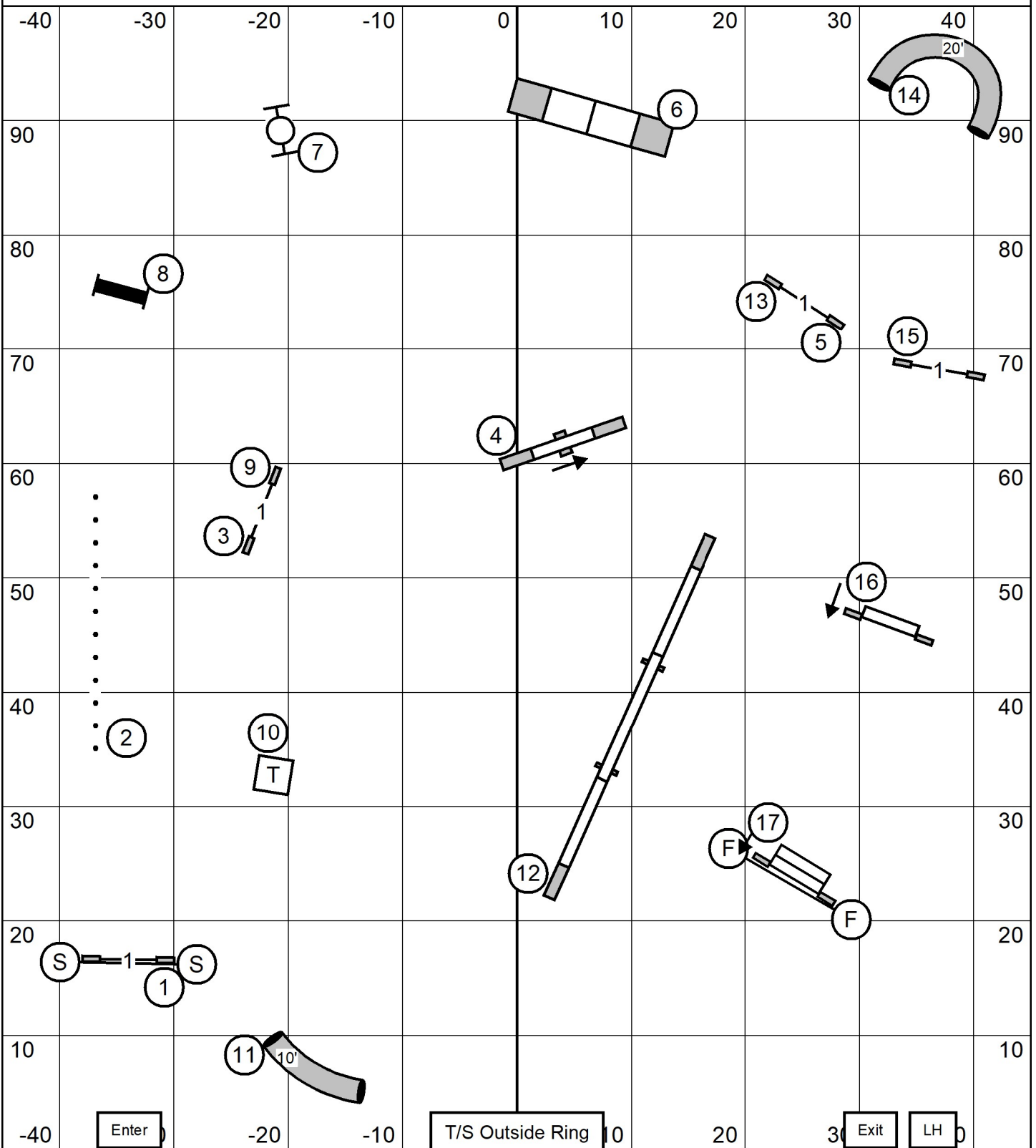


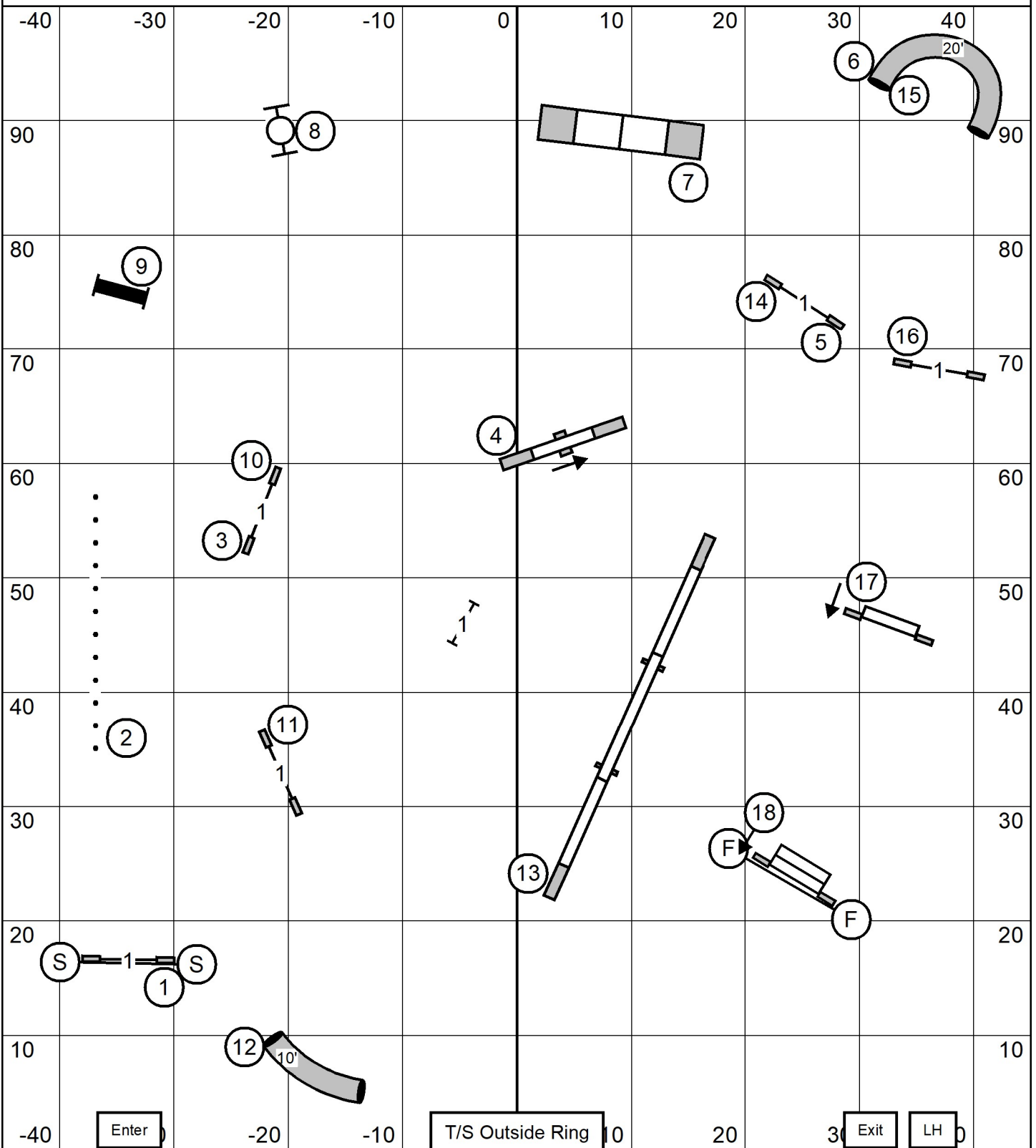


# OPEN STD



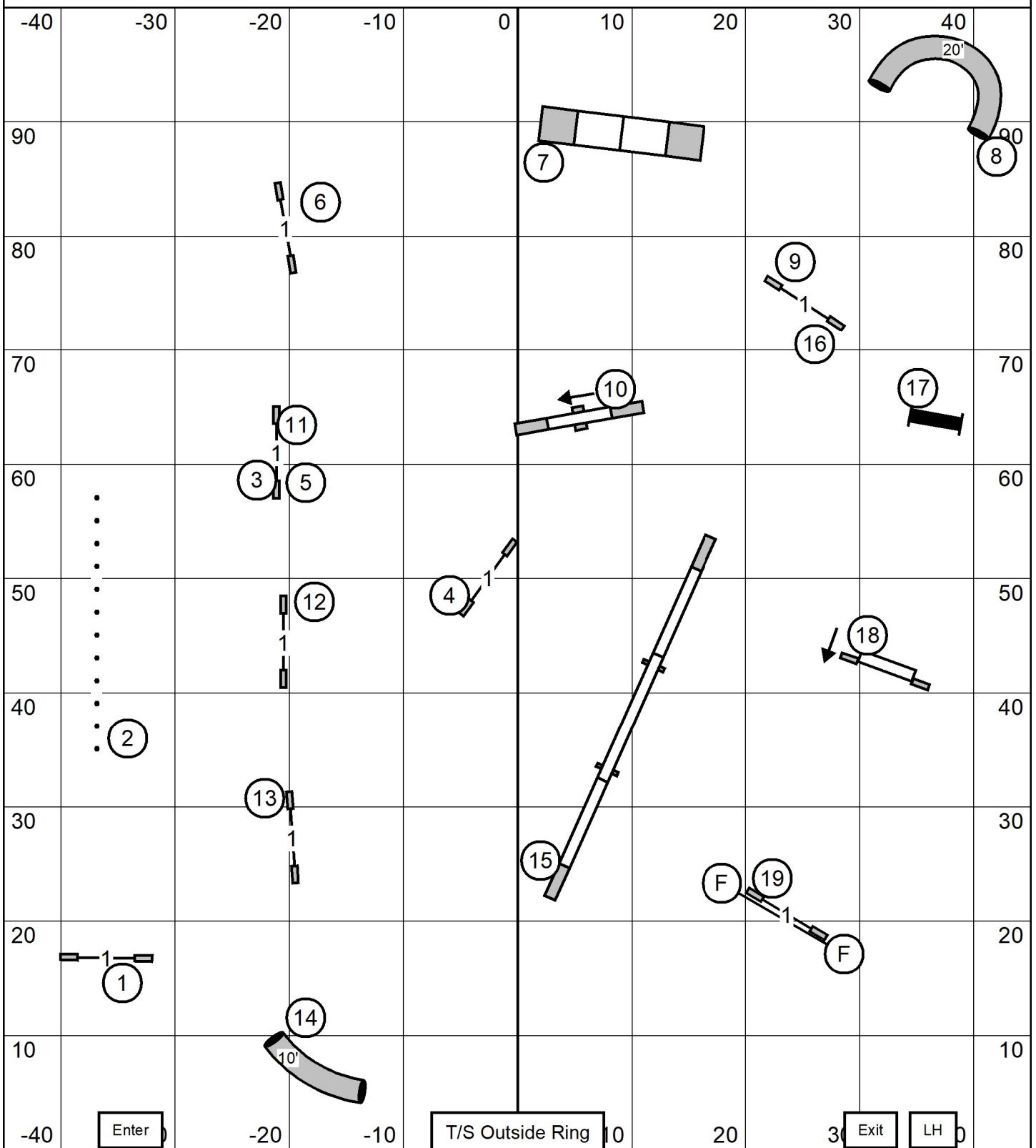
**Greater St Louis Shetland Sheepdog Club**  
 Thursday, March 26, 2026 \* Gray Summit, Mo. (Purina Farms)  
 Open STD \* Rick Mullen

# EXCELLENT/MASTER STD



**Greater St Louis Shetland Sheepdog Club**  
 Thursday, March 26, 2026 \* Gray Summit, Mo. (Purina Farms)  
 Excellent/Master STD \* Rick Mullen

# PREMIER STD

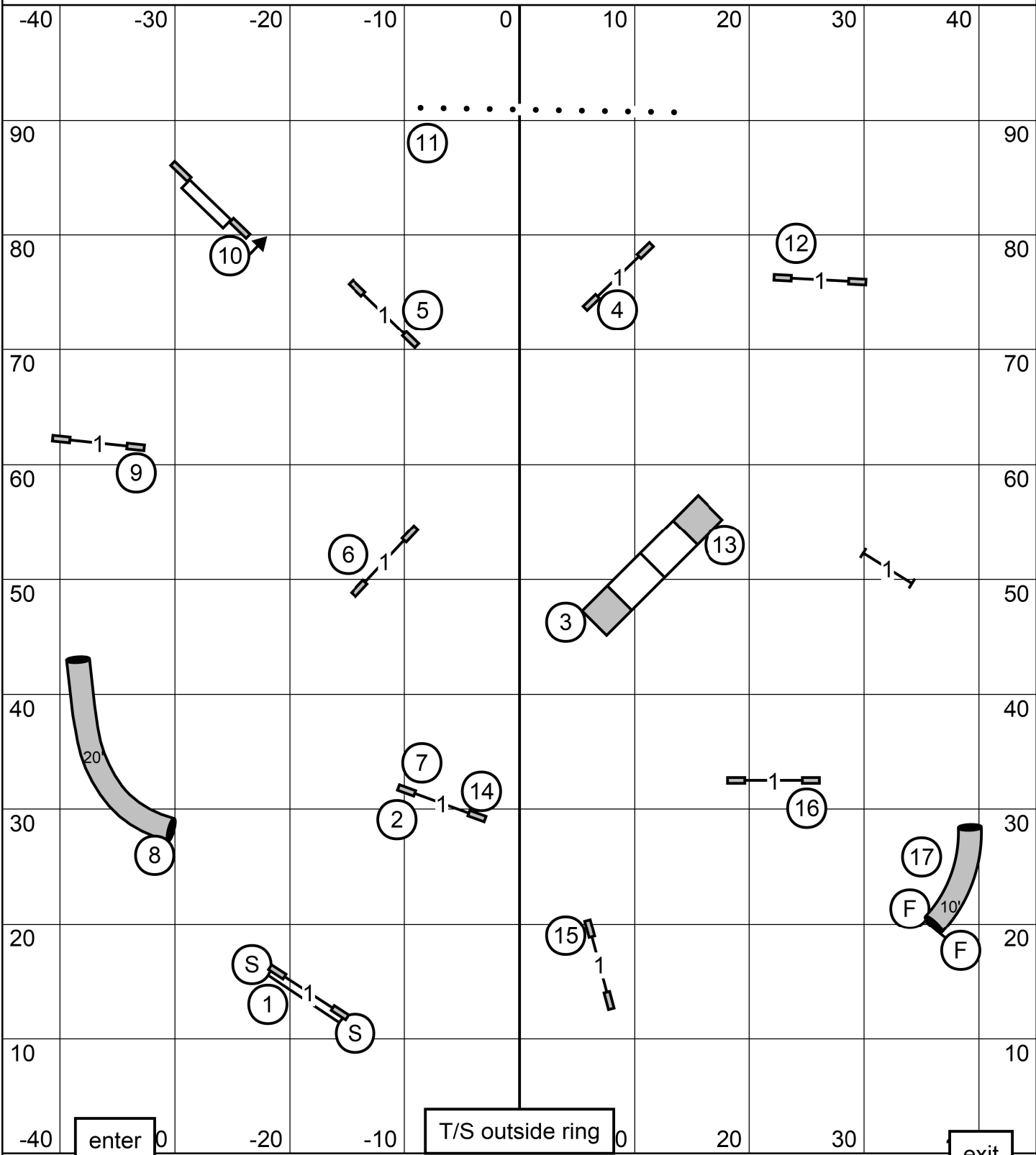


**Greater St Louis Shetland Sheepdog Club**

Thursday, March 26, 2026 \* Gray Summit, Mo. (Purina Farms)

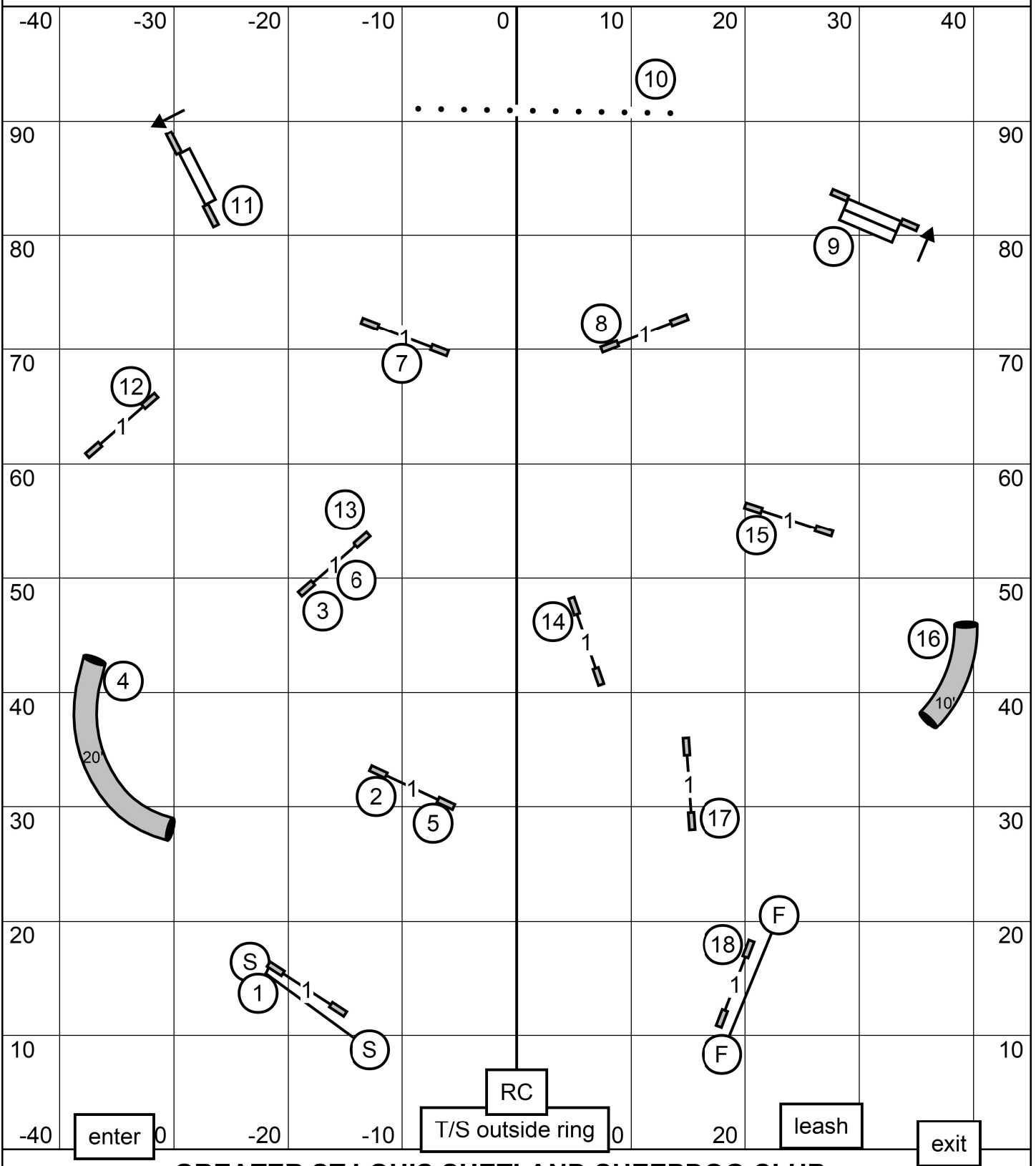
Premier STD \* Rick Mullen

# TIME 2 BEAT



**GREATER ST LOUIS SHETLAND SHEEPDOG CLUB**  
 \* Thursday, March 26, 2026 \* Purina Farms \* Gray Summit, MO\*  
 \* Time 2 Beat \* Mary Mullen\*

# EXCELLENT/MASTER JWW

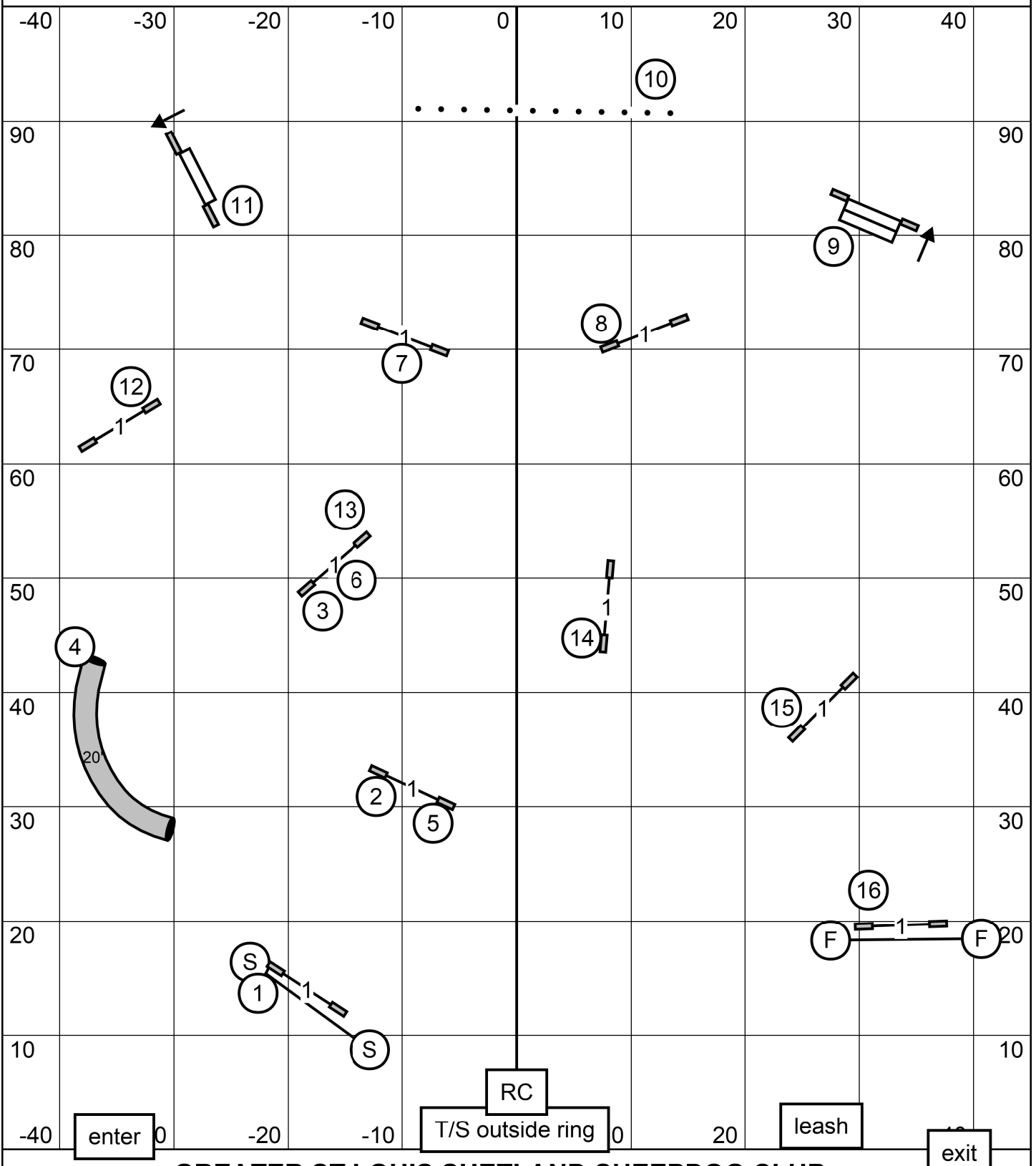


## GREATER ST LOUIS SHETLAND SHEPDOG CLUB

\* Thursday, March 26, 2026 \* Purina Farms \* Gray Summit, MO\*

\* Excellent/Master JWW \* Mary Mullen\*

# OPEN JWW

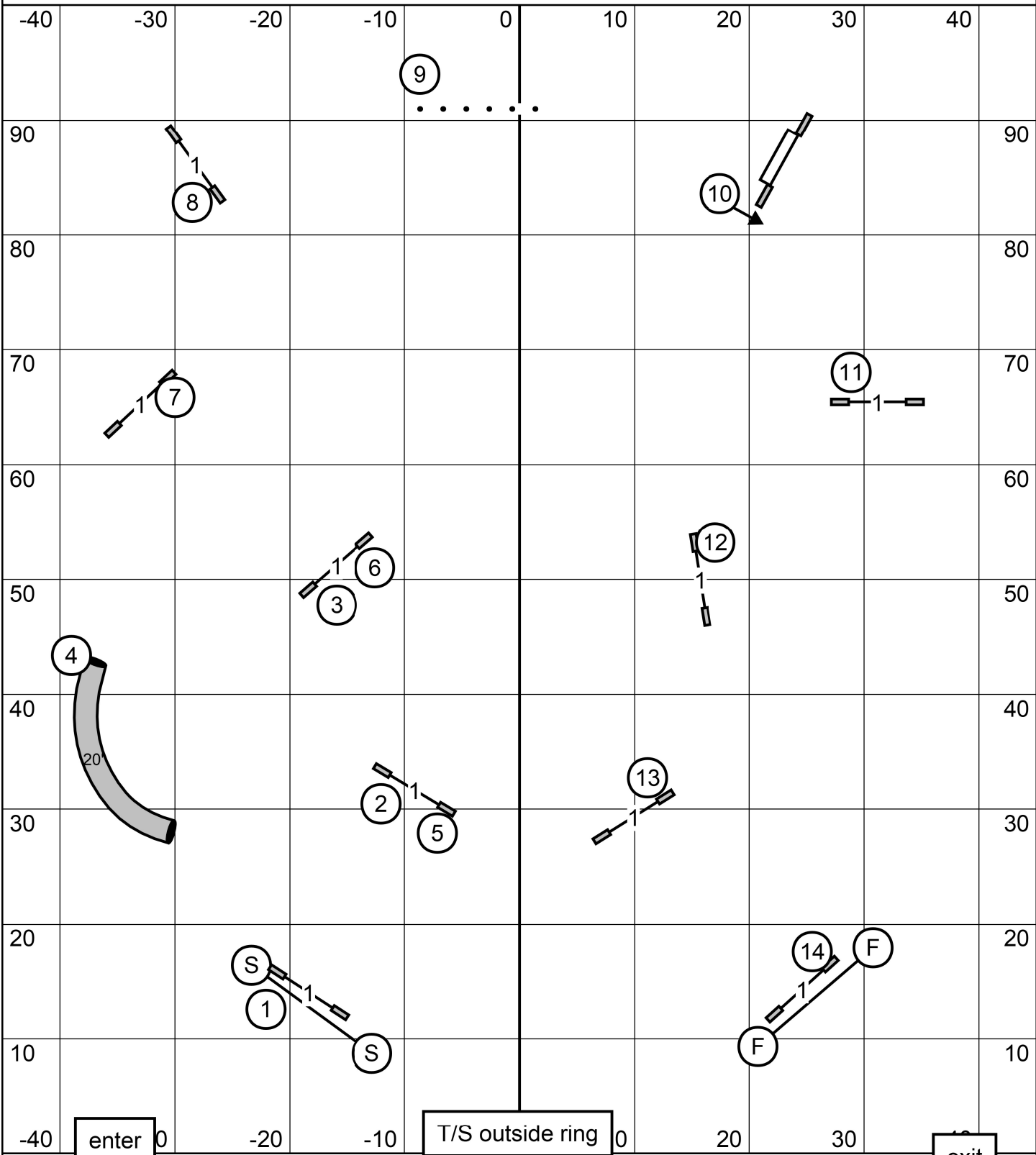


## GREATER ST LOUIS SHETLAND SHEEPDOG CLUB

\* Thursday, March 26, 2026 \* Purina Farms \* Gray Summit, MO\*

\* Open JWW \* Mary Mullen\*

# NOVICE JWW



## GREATER ST LOUIS SHETLAND SHEEPDOG CLUB

\* Thursday, March 26, 2026 \* Purina Farms \* Gray Summit, MO\*

\* Novice JWW \* Mary Mullen\*