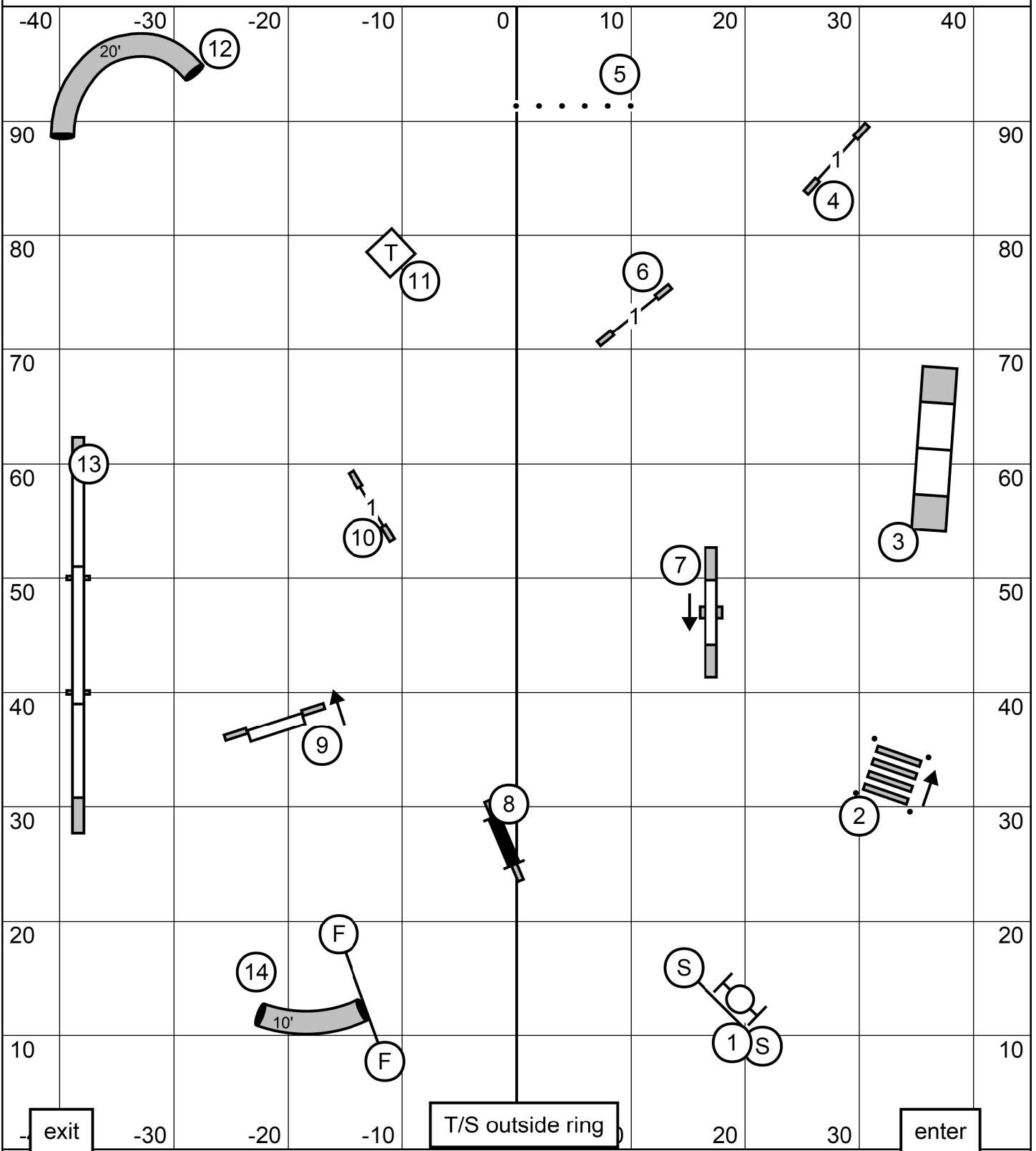


NOVICE STANDARD

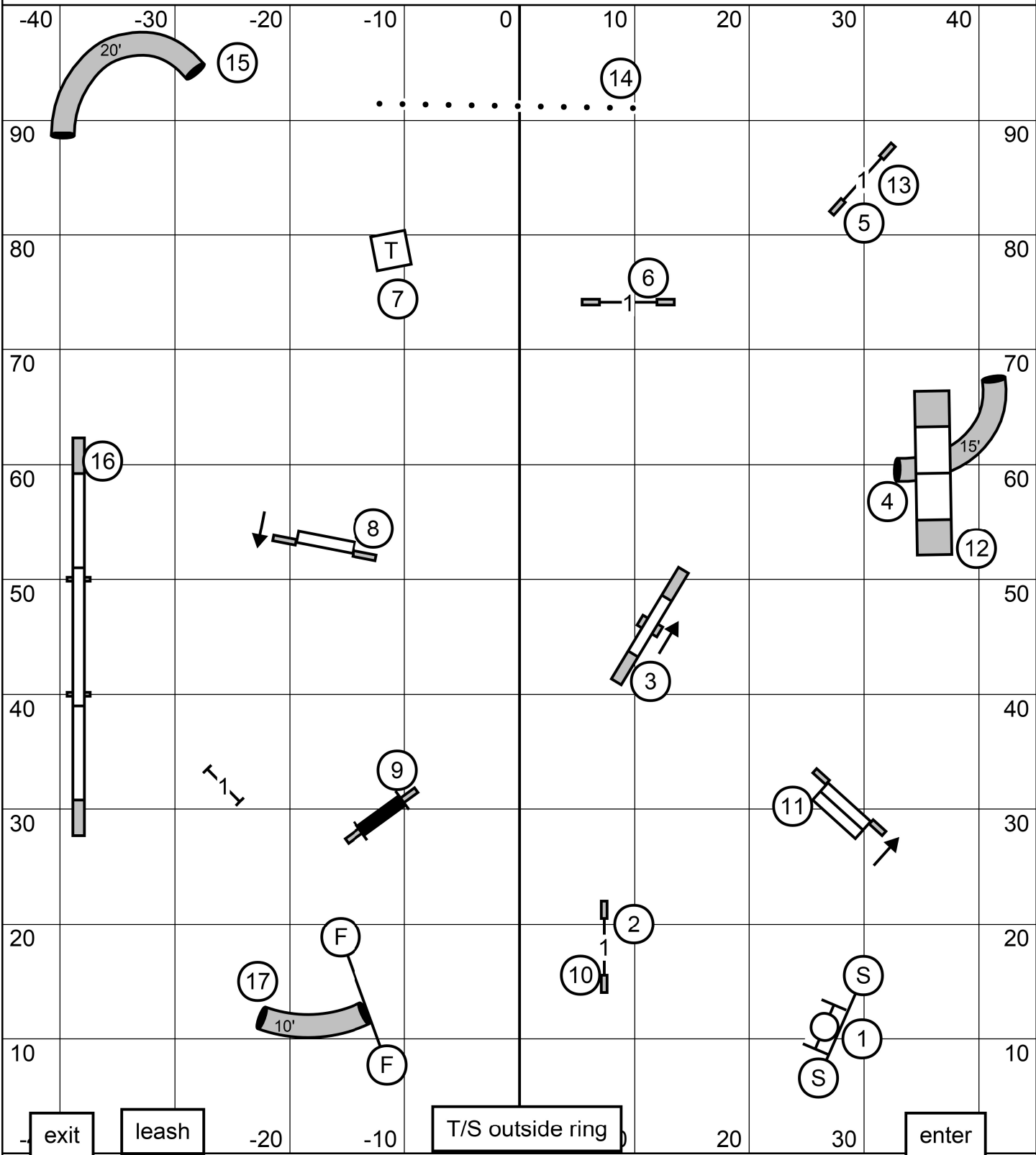


AMERICAN SHETLAND SHEEPDOG CLUB NATIONAL AGILITY TRIAL

* Friday, March 27, 2026 * Purina Farms * Gray Summit, MO*

* Novice Standard * Mary Mullen*

OPEN STANDARD

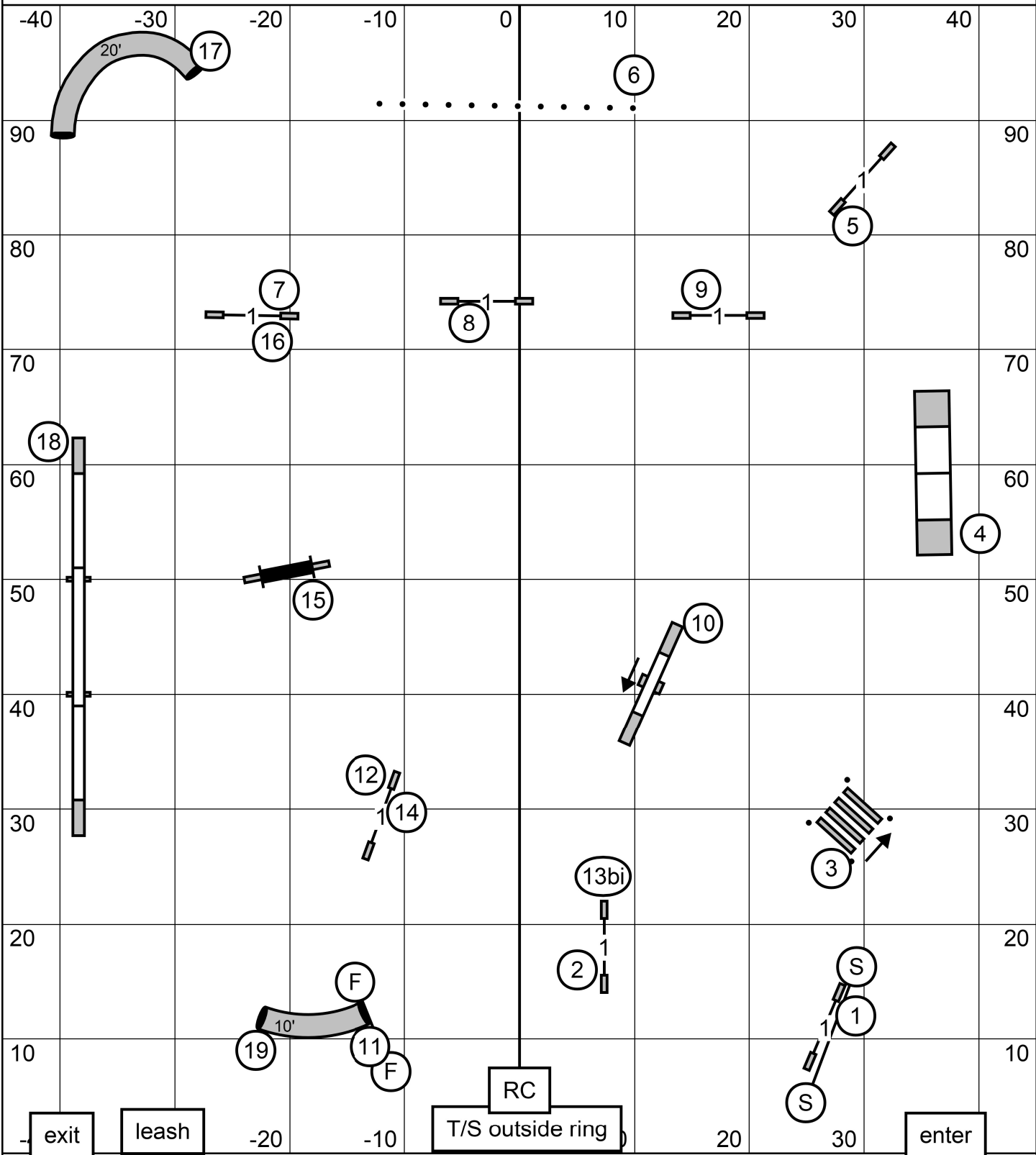


AMERICAN SHETLAND SHEEPDOG CLUB NATIONAL AGILITY TRIAL

* Friday, March 27, 2026 * Purina Farms * Gray Summit, MO*

* Open Standard * Mary Mullen*

PREMIER STANDARD



AMERICAN SHETLAND SHEEPDOG CLUB NATIONAL AGILITY TRIAL

* Friday, March 27, 2026 * Purina Farms * Gray Summit, MO*

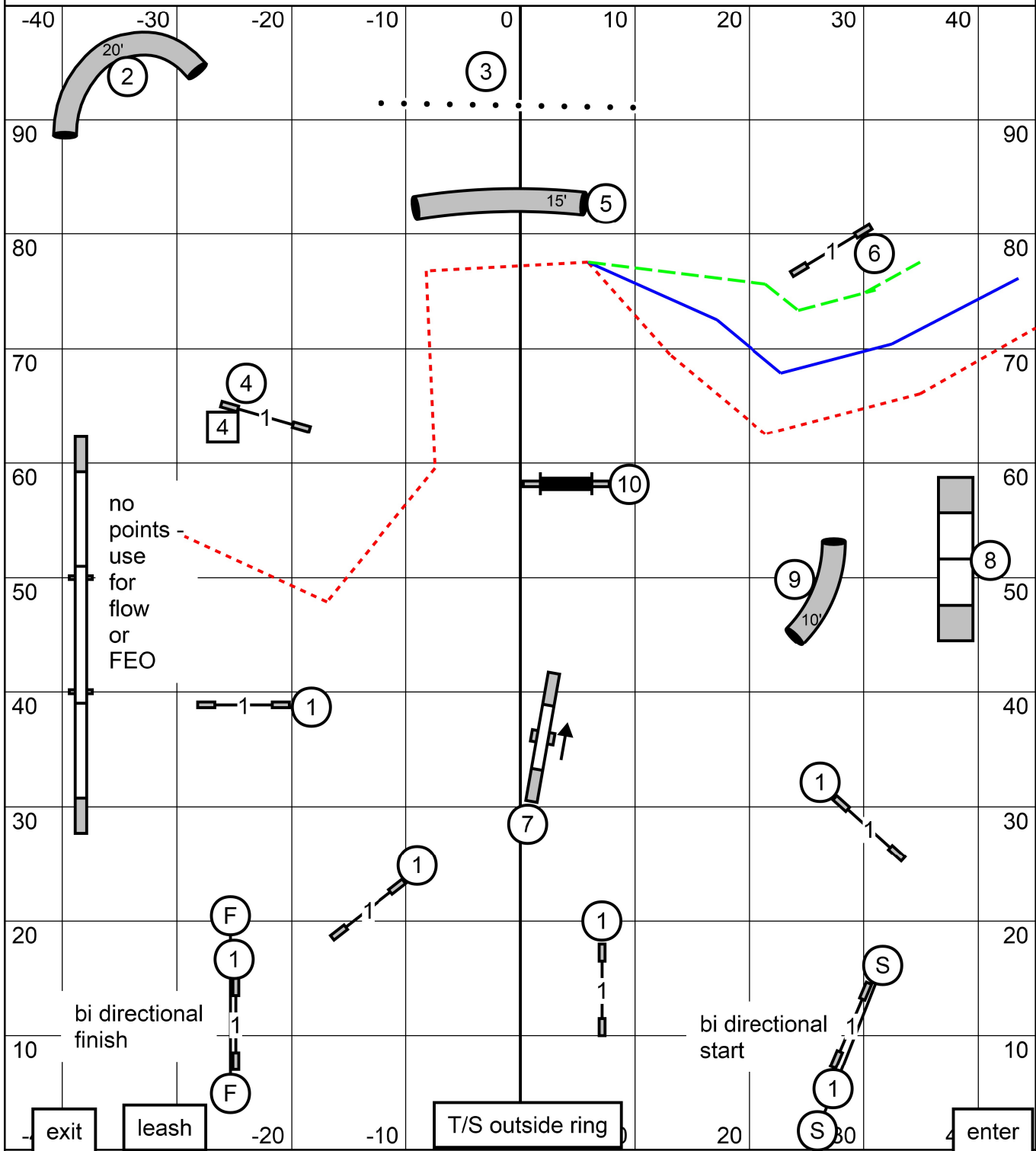
* Premier Standard * Mary Mullen*

X/M bonus (6) (5) (4) success = 35 points
 25 additional points needed

Open bonus (6) (5) success = 31 points
 24 additional points needed

Novice bonus (6) (5) success = 31 points
 19 additional points needed

all levels
FAST

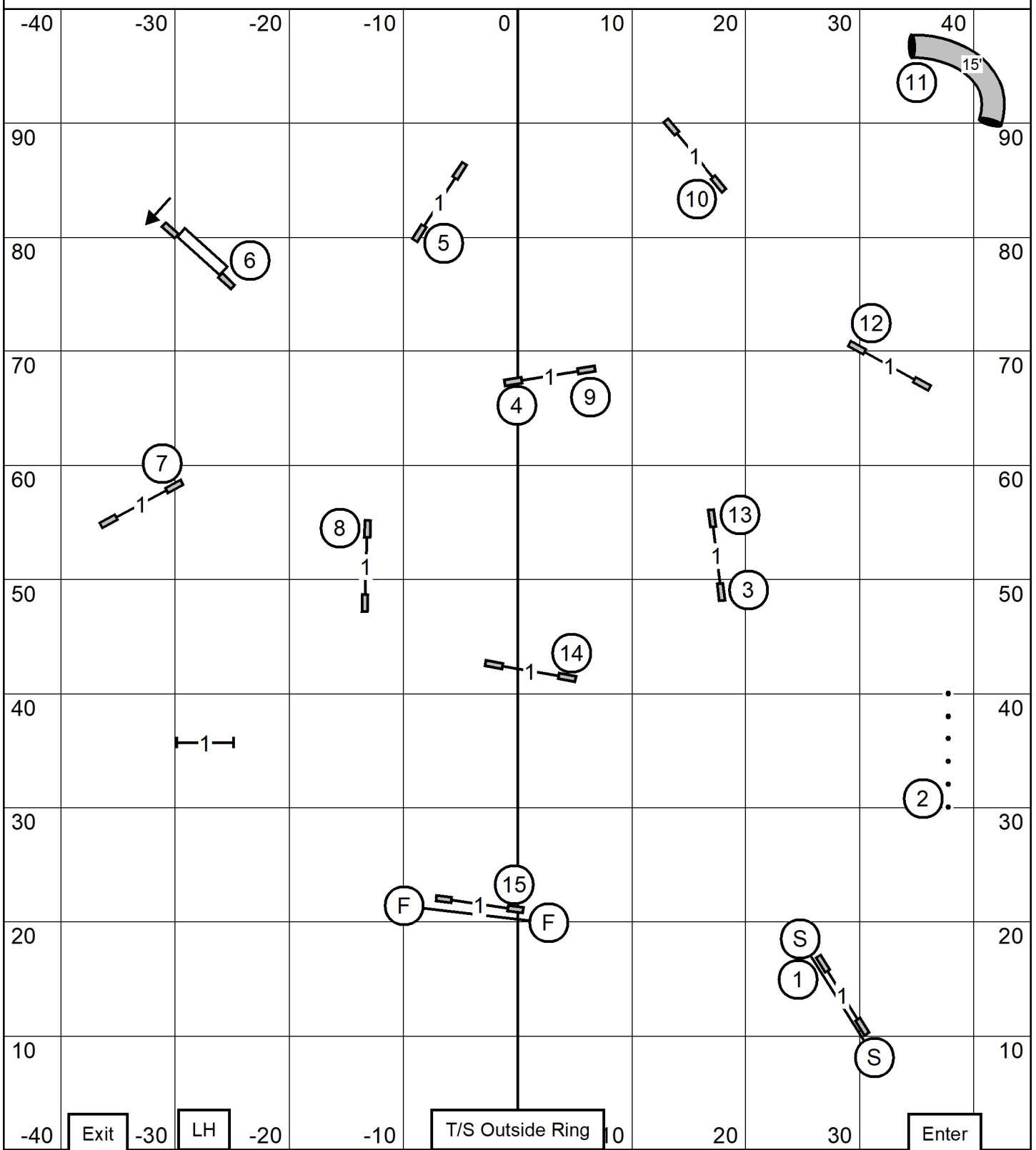


AMERICAN SHETLAND SHEEPDOG CLUB NATIONAL AGILITY TRIAL

* Friday, March 27, 2026 * Purina Farms * Gray Summit, MO*

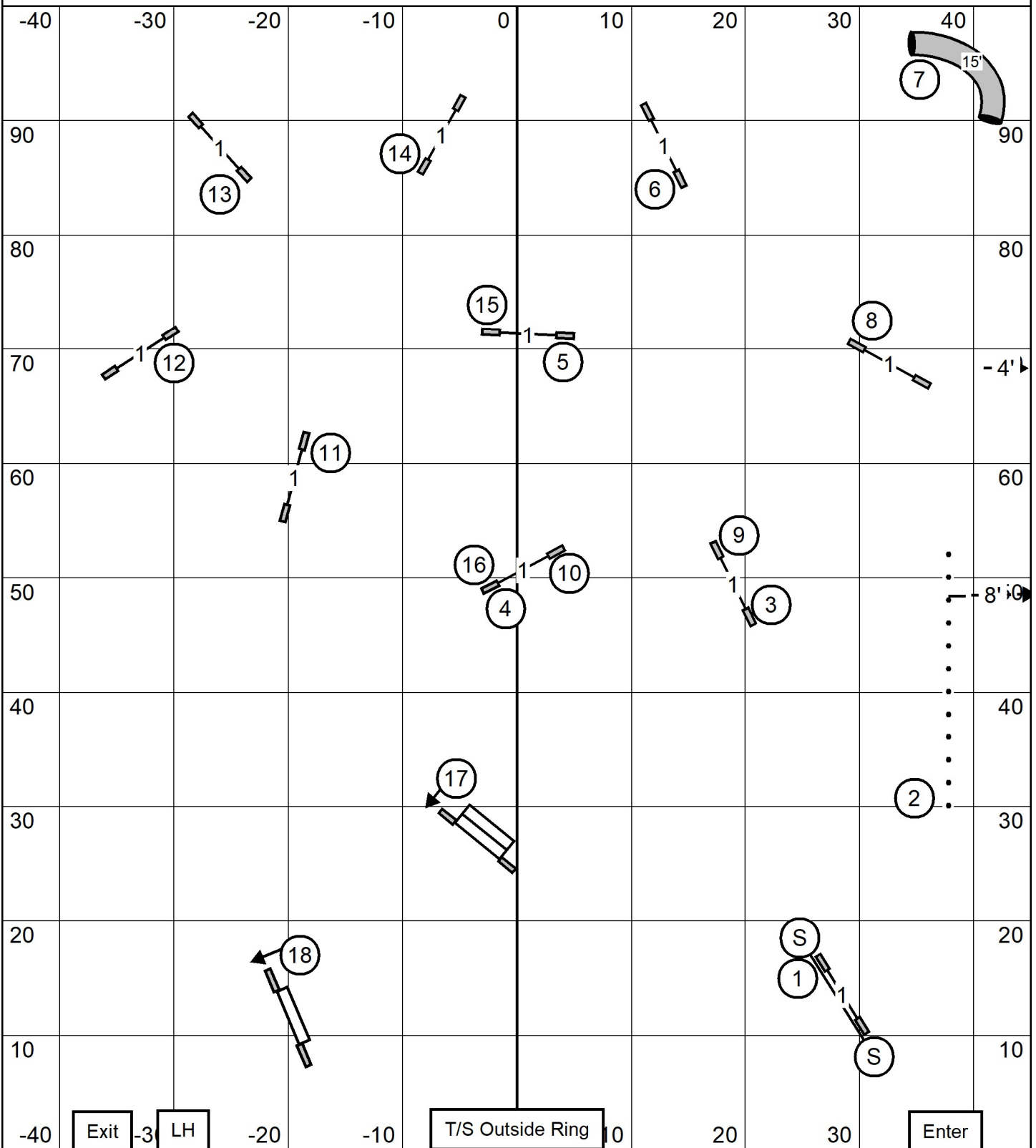
* All Levels FAST * Mary Mullen*

NOVICE JWW



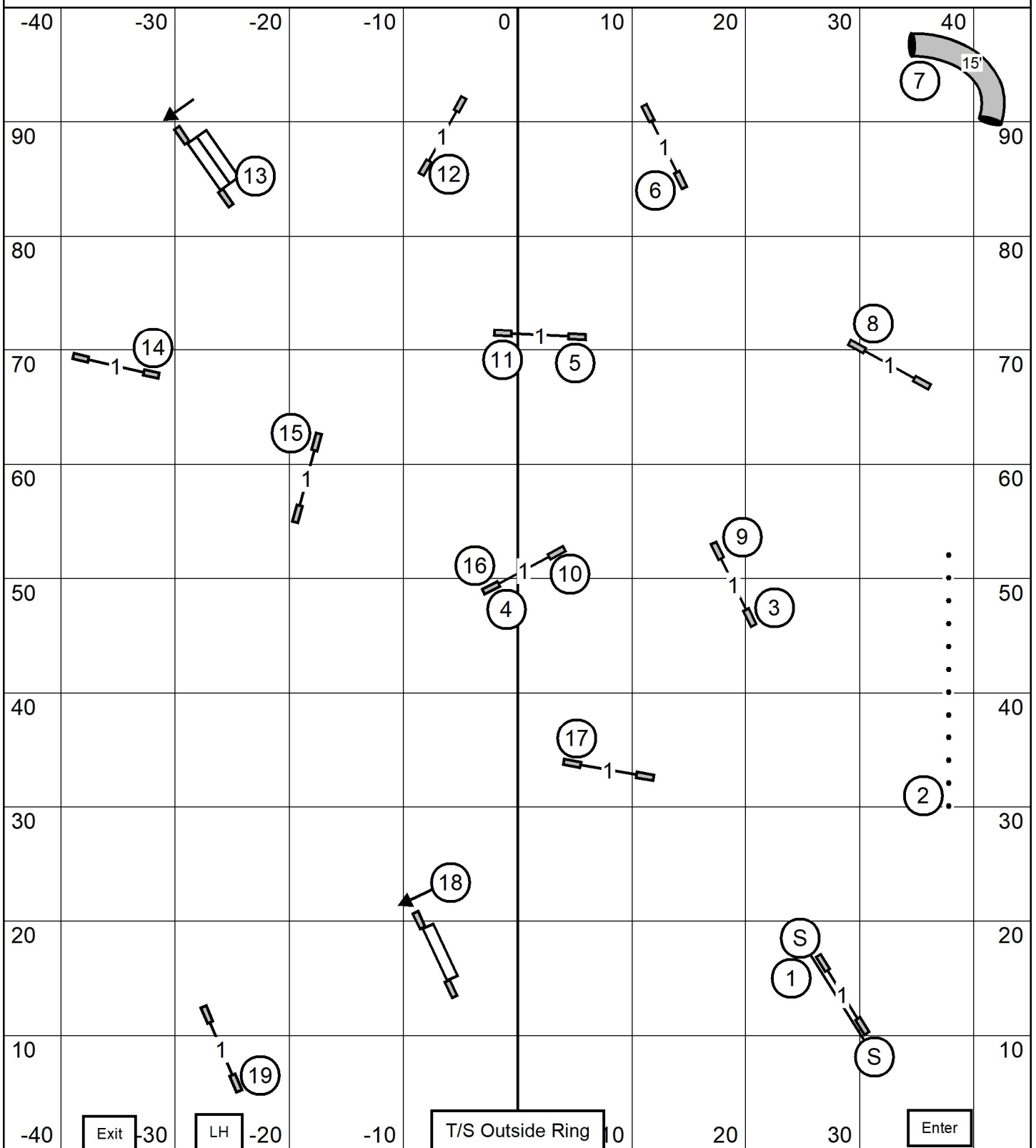
American Shetland Sheepdog Association NATIONAL SPECIALTY
 Friday, March 27, 2026 * Gray Summit, Mo. (Purina Farms)
 Novice JWW * Rick Mullen

OPEN JWW



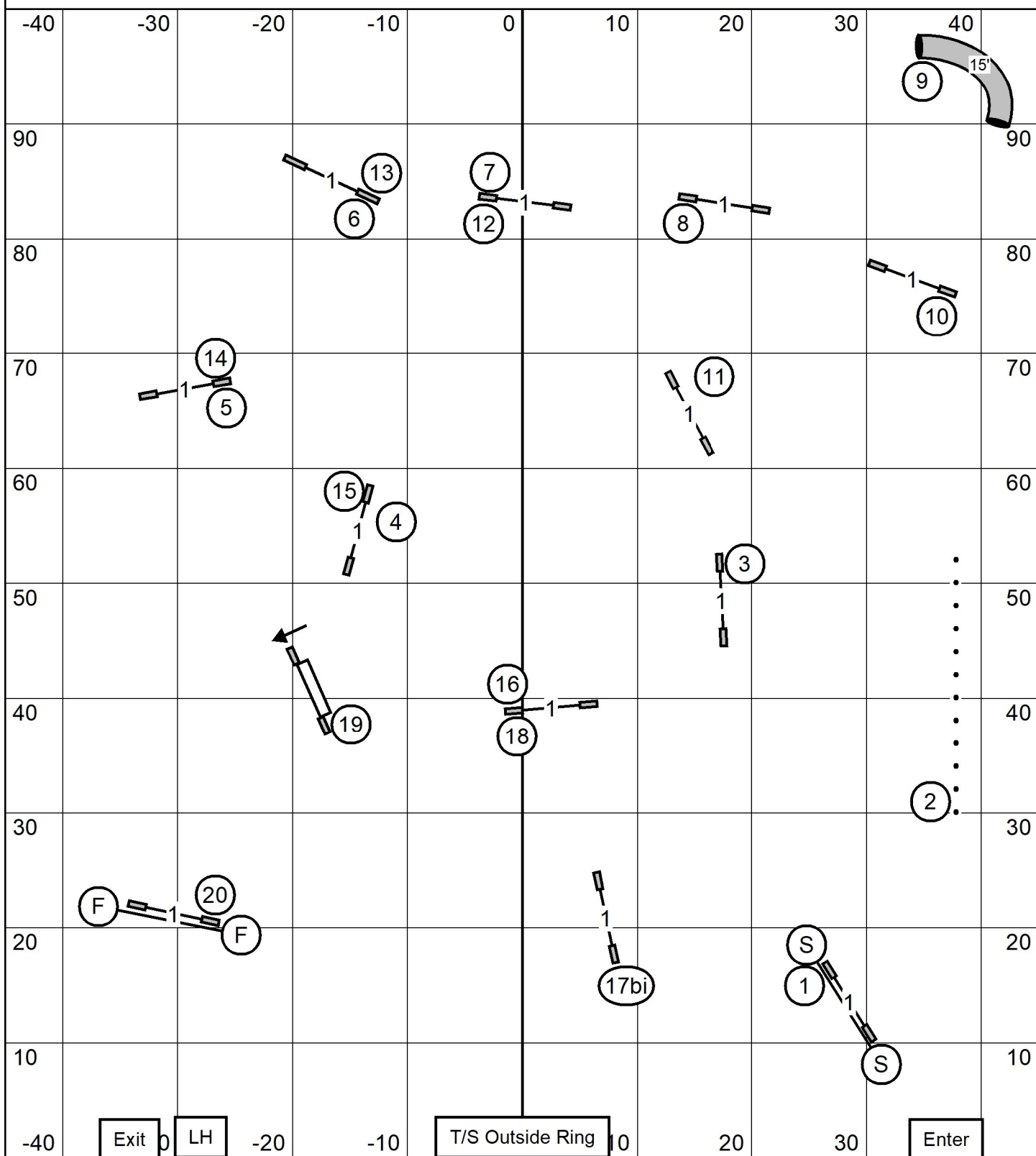
American Shetland Sheepdog Association NATIONAL SPECIALTY
 Friday, March 27, 2026 * Gray Summit, Mo. (Purina Farms)
 Open JWW * Rick Mullen

EXCELLENT/MASTER JWW



American Shetland Sheepdog Association NATIONAL SPECIALTY
 Friday, March 27, 2026 * Gray Summit, Mo. (Purina Farms)
 Excellent/Master JWW * Rick Mullen

PREMIER JWW

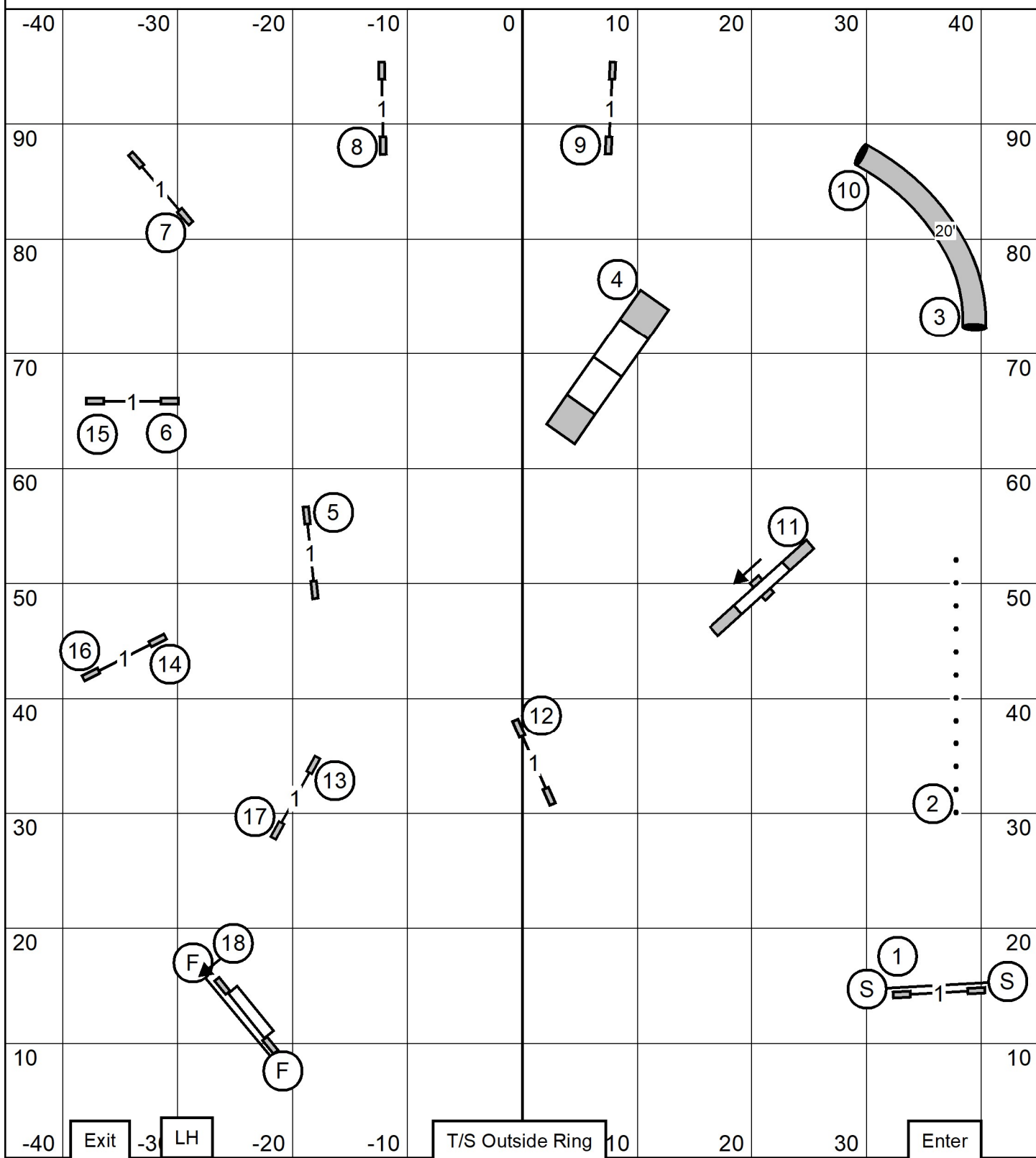


American Shetland Sheepdog Association NATIONAL SPECIALTY

Friday, March 27, 2026 * Gray Summit, Mo. (Purina Farms)

Premier JWW * Rick Mullen

TIME 2 BEAT



American Shetland Sheepdog Association NATIONAL SPECIALTY

Friday, March 27, 2026 * Gray Summit, Mo. (Purina Farms)

Time 2 Beat JWW * Rick Mullen