

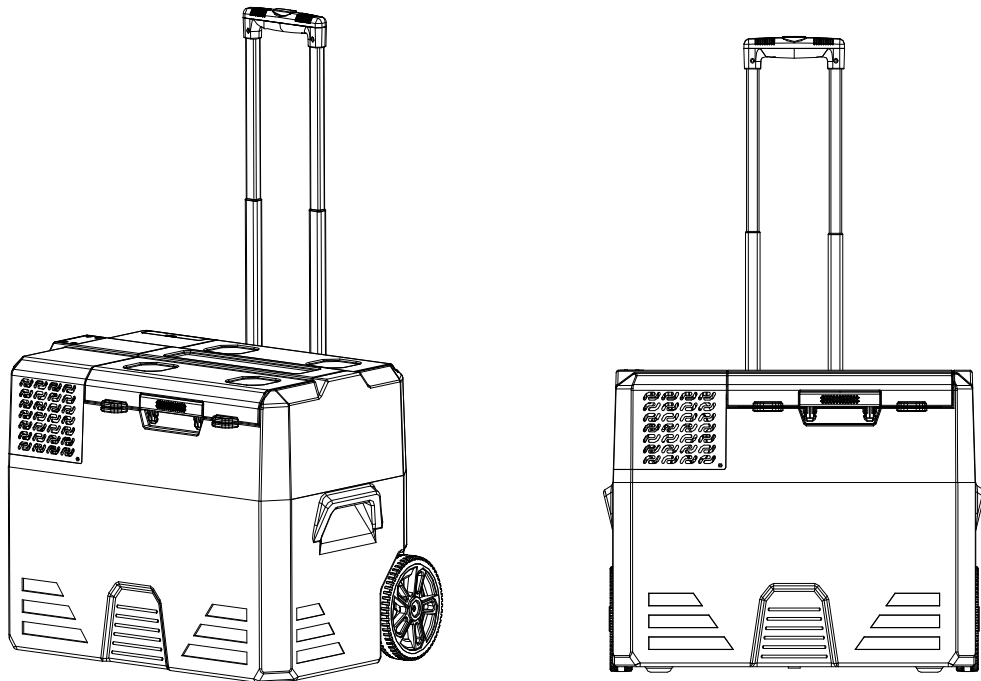


N52

NOMADARCTIC
INNOVATIVE COOLING SOLUTIONS

Car Refrigerator Operation Manual

Rechargeable Pull-rod Solar Refrigerator



Model: N42 N52 N62

N42E N52E N62E

Note: Refrigerator Adapters/ Solar Panel and Battery is optional and need to be purchased separately. Please read the instruction carefully before use.

1. Note:

- Before using the refrigerator for the first time, please clean the inside and outside of the refrigerator with a wet cloth.
- No corrosive liquid is allowed in the refrigerator.
- If you don't use the refrigerator for a long time, please disconnect the power and take out the battery.

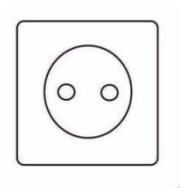
2. Refrigerator Power

- Refrigerator power

Household AC Power

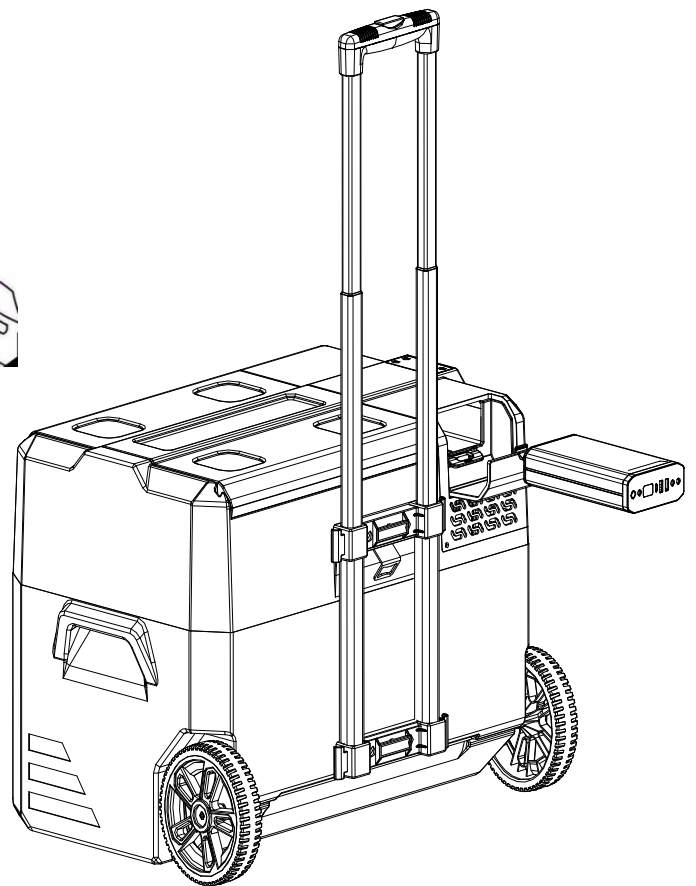
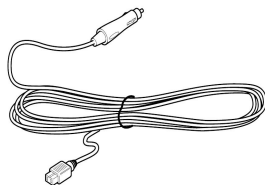
Supply

Need to be with adaptor.



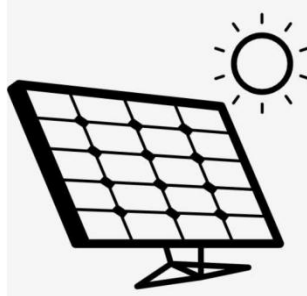
DC Power

Connect to the 12/24V or battery on the vehicle.



Solar Panel (PV)

charge the battery or
power to the refrigerator.



Turn on the power of the battery before using the refrigerator. Please read the battery manual carefully when using the refrigerator with battery

AC Power Instruction

- When AC charging power supply is available, AC charging should be preferred. Check the AC voltage range and connect the AC power socket with AC adapter.
- Before traveling or outdoor activities, it is recommended to use AC adapter to fully charge the refrigerator battery.
- If the refrigerator is not used for a long time, the battery may have been over discharged and the device will not start. Please use the AC adapter to charge the unit to the working mode. When the charging power of the device exceeds 30%, other charging methods can be adopted.

DC Power Instruction

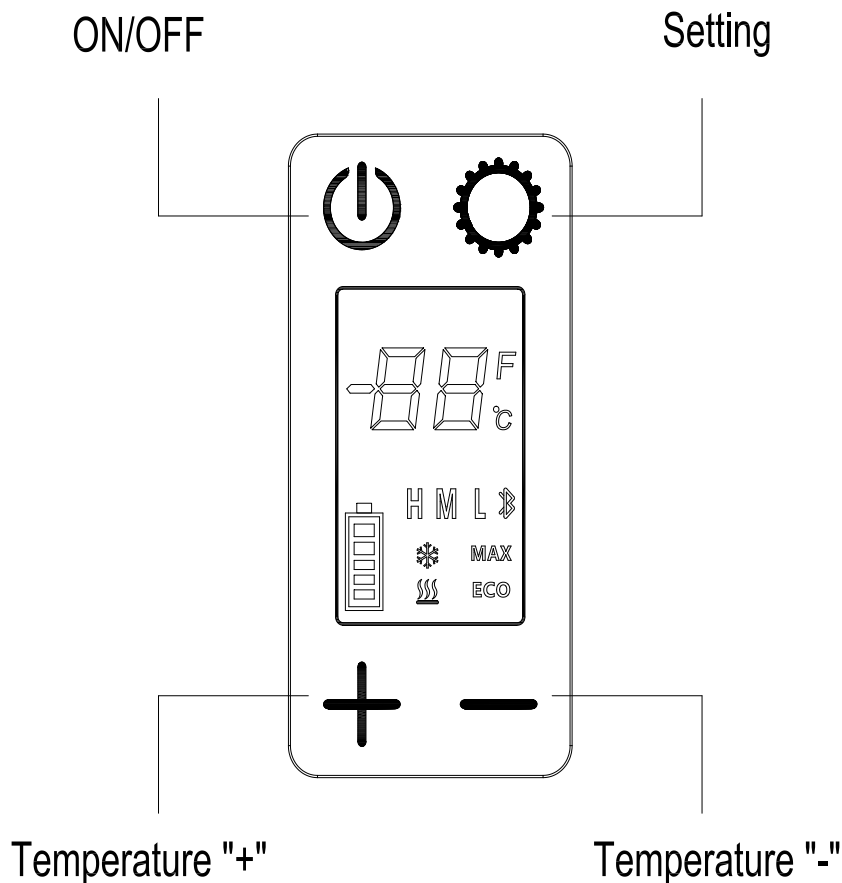
- Engine ON: select H, M or L, and use the car port power supply to operate the refrigerator. Different cars may have different output voltages. If E1 displayed, just adjust the battery protection from H to M or L.
- Engine OFF: Operating with car battery, most cars will stop power supply after engine off, while some cars will continue to power supply after engine off. You should adjust the refrigerator battery protection mode to “H”; otherwise the car battery may run out of power, which may lead to insufficient power to start the car. You can also unplug the car charger and use the refrigerator internal battery to run. If you do not want to use the car battery, it is recommended to disconnect the car charger from the refrigerator and set the battery protection to mode “L”. This will allow the refrigerator

battery to work longer in safe and independent conditions.

Solar Panel Power Instruction

- Insert the solar power charging line into the "PV" port. The maximum solar input voltage is 50V and the input current is 10A. When the solar panel is used to charge the refrigerator, please use the extension cable and put the refrigerator in the cool place to avoid overheating and failure of the refrigerator. When the refrigerator is charged by the solar panel, the battery icon on the display will flash to show the charging status. The charging input power should be higher than the working power of the refrigerator (about 40-45w), otherwise the battery will not be able to charge. In order to ensure the solar charging power is higher than the operating power of refrigerator, over 100W solar panle is recommended.

3. Operation



- When Power Off, press the "ON/OFF" one time to turn on the refrigerator; When Power on, press the "ON/OFF" one time and the refrigerator will shut down.
- Temperature setting: Power On, when press "up" or "down" the temperature display will flash, then press "up" or "down" to set the temperature. The setting value is adjusted linearly by 4 degrees per second when press and hold "up" or "down" (not jump, no flicker during long press).
- Car battery protection Setting:
Power ON, press and hold "SET" 2 seconds, it will display the symbol of the current corresponding battery protection gear and flash. Press "SET" to switch between the battery voltage protection and the setting of Centigrade / Fahrenheit. In the corresponding state, Press "UP" or "DOWN" to switch up or down the gear or centigrade / Fahrenheit (the default is medium, the default is centigrade). After 5S, if there is no operation, it will exit the setting and save the data.

High: H; Medium: M; Low: L(Used for connecting solar panels or external batteries)

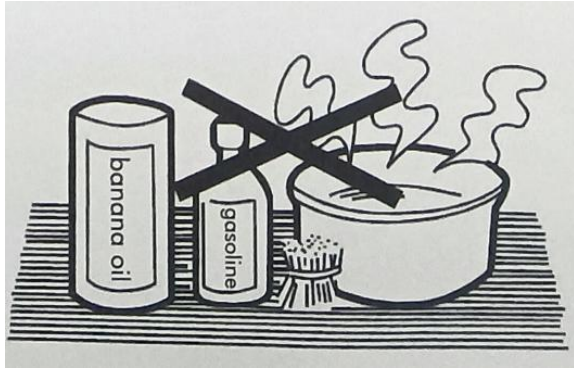
| | 12(V) | | 24(V) | |
|---|------------------------|----------------------|-------------------------|-----------------------|
| | Voltage Stop | Voltage Start | Voltage Stop | Voltage Start |
| H | 11.3 | 12.6 | 24.3 | 25.7 |
| M | 10.8 | 11.8 | 22.3 | 23.7 |
| L | 9.6V~31.5V | | | |
| | Low protection voltage | Low starting voltage | High protection voltage | High starting voltage |
| | 9.6 | 10.9 | 31.5 | 30.5 |

4. Daily cleaning and maintenance

- Cleaning
Clean and maintain the refrigerator every other week. Wipe the inside and outside surfaces of the refrigerator with a warm and wet rag. If it is too dirty, wipe it with a neutral detergent, and then use a washed rag to dry the water stains.
- Plastic parts maintenance

If the oil (animal or vegetable oil) is attached to the plastic parts in the box for a long time, the plastic is easy to age or crack, and gives off peculiar smell. Therefore, we should form the habit of regular cleaning.

It is strictly forbidden to clean the refrigerator directly with water to prevent the electrical insulation from reducing and rusting. The following things will damage the coating and plastic parts, which can't be used for cleaning: alkaline detergent, soap, grinding powder, hot water, brush, thinner, gasoline, alcohol.



5. Troubleshooting

- Refrigerator not work

——Check whether the power supply is faulty and whether the power supply voltage is too low.

——Check whether the power plug is in good contact.

——Check whether the fuse is broken.

The fuse is in the head of the power line cigarette lighter, Remove the cigarette lighter screw and open the cover to replace the fuse.

Refrigerator fault, compared with the error code prompt for troubleshooting.

| Code | Fault |
|------|----------------------------|
| E1 | Battery Protection Failure |
| E2 | Fan Failure |
| E3 | Compressor Start Failure |
| E4 | Min / Max Speed Fault |
| E5 | Overheat Protection Fault |
| E6 | NTC Failure |

- Food Frozen by the refrigerator

——Too low set temperature

- Poor Fridge/Freezing

——Food storage is too large and crowded, cold air circulation is not smooth.

——Refrigerator door not closed properly

——The door seal is damaged or deformed, and the seal is not tight

——Poor ventilation at cooling fan

——Too much hot food inside

——Sunlight or heat source nearby

- Sound of running water in the box

——This is the flow sound of refrigerant, it is ok.

- Abnormal noise

——Cooling fan failure.

——There are loose or falling parts inside the refrigerator

6. Safety instructions

Nonstandard operation may endanger personal safety or damage the refrigerator. Please refer to safety instructions for current or voltage related hazards. Failure to comply with this instruction may result in damage to or damage to the refrigerator and impair its function.

Please make sure that only items suitable for setting the refrigeration temperature are put into the refrigerator.

If you need to store drugs, please verify whether the refrigeration efficiency of the refrigerator is consistent with the requirements of drugs.

- This product cannot be placed in reverse 90 degrees, let alone inverted.
- If the power cord is damaged, it must be repaired by the manufacturer, customer service or similar qualified personnel. Improper repair may cause injury to the product and personnel.
- This product cannot be cleaned or maintained by children.
- This product should be placed or used in a place out of the reach of children under 8 years old.
- Do not put explosive objects (such as spray cans containing flammable agents) in the refrigerator.
- Check the input voltage of refrigerator is consistent with the power supply voltage.
- When it is out of service, pull out the wire plug from the socket or cigarette plug.
- Do not open the control circuit.
- Refrigeration equipment cannot be transported with perishable materials or materials containing solvents.
- Food should be stored in the original packaging or matching containers.
- Make sure the power cord and plug are dry before starting.
- It is forbidden to use electrical appliances except those with special functions recommended by the supplier in the refrigerator.
- Start the refrigerator in a dry place to avoid splashing water.
- Refrigerators and wires should be protected from moisture and rain.
- Refrigerators should not be placed near open fire or other heat sources (heater, direct sunlight, gas, etc.).
- During operation, please put it in a ventilated place for heat dissipation and ensure that the ventilation slot is not covered.

- Refrigerator away from walls and other objects, to ensure air circulation, can make the refrigerator refrigeration effect better.

7. Specification

| | | | | | | |
|-----------------------------------|-----------------|--------|-------------|--------|-------------|--------|
| Model | N42 | N42E | N52 | N52E | N62 | N62E |
| Capacity (L) | 42L | 42L | 52L | 52L | 62L | 62L |
| Setting Temperature | -18℃ ~ 10℃ | | | | | |
| Ambient Type | T / ST / N / SN | | | | | |
| Electrical safety level | III | | | | | |
| DC Power (V) | 12/24V | | | | | |
| Rated Power (W) | 50 | | | | | |
| Rated Current (A) | 4.2A/2.1A | | | | | |
| Battery | No | Option | No | Option | No | Option |
| Refrigeration Charge R134a (g) | 55g | 55g | 57g | 55g | 57g | 55g |
| Product Dimension (mm) | 665*455*445 | | 665*455*515 | | 665*455*580 | |
| Package Dimension (mm) | 705*515*505 | | 705*515*575 | | 705*515*645 | |
| Net Weight (Kg) | | | | | | |



Treatment: do not treat this product as unclassified municipal waste. Scrapped machines need to be collected separately for special treatment.