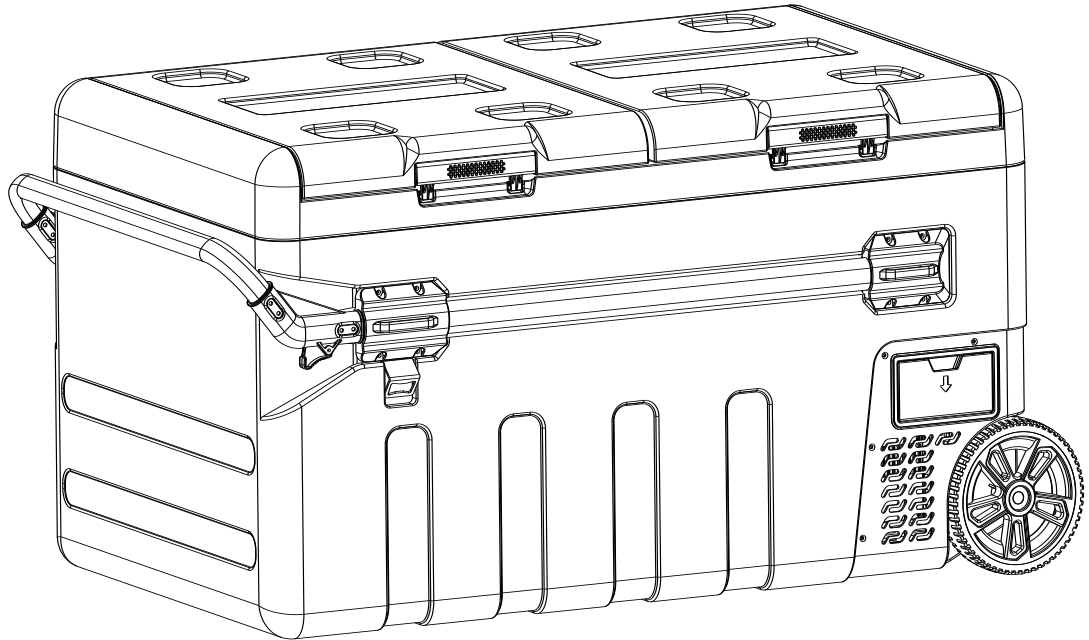




N95

NOMADARCTIC
INNOVATIVE COOLING SOLUTIONS

Rechargeable Pull-rod Solar Refrigerator



Model: N75 N95

N75E N95E

Note: Refrigerator Adapters/ Solar Panel and Battery is optional and need to be purchased separately. Please read the instruction carefully before use.

Portable Refrigerator Operation Manual

1. Note:

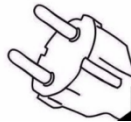
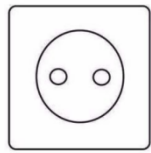
- Before using the refrigerator for the first time, please clean the inside and outside of the refrigerator with a wet cloth.
- No corrosive liquid is allowed in the refrigerator.
- If you don't use the refrigerator for a long time, please disconnect the power and take out the battery.

2. Refrigerator Power

- Refrigerator power

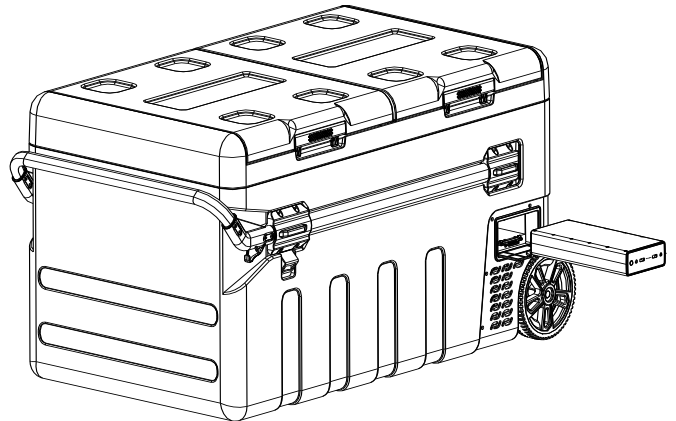
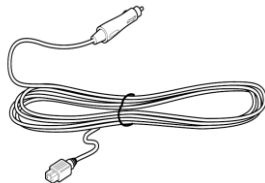
Household AC Power Supply

Need to be with adaptor.



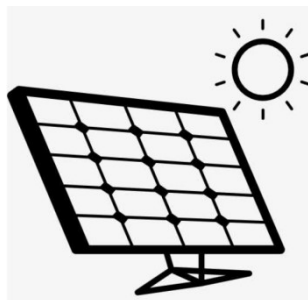
DC Power

Connect to the 12/24V or battery on the vehicle.



Solar Panel (PV)

charge the battery or power to the refrigerator.



- Turn on the power of the battery before using the refrigerator. Please read the battery manual carefully when using the refrigerator with battery
- When the refrigerator is powered by an adaptor or solar panel, the battery is also charged.

AC Power Instruction

- When AC charging power supply is available, AC charging should be preferred. Check the AC voltage range and connect the AC power socket with AC adapter.
- Before traveling or outdoor activities, it is recommended to use AC adapter to fully charge the refrigerator battery.
- If the refrigerator is not used for a long time, the battery may have been over discharged and the device will not start. Please use the AC adapter to charge the unit to the working mode. When the charging power of the device exceeds 30%, other charging methods can be adopted.

DC Power Instruction

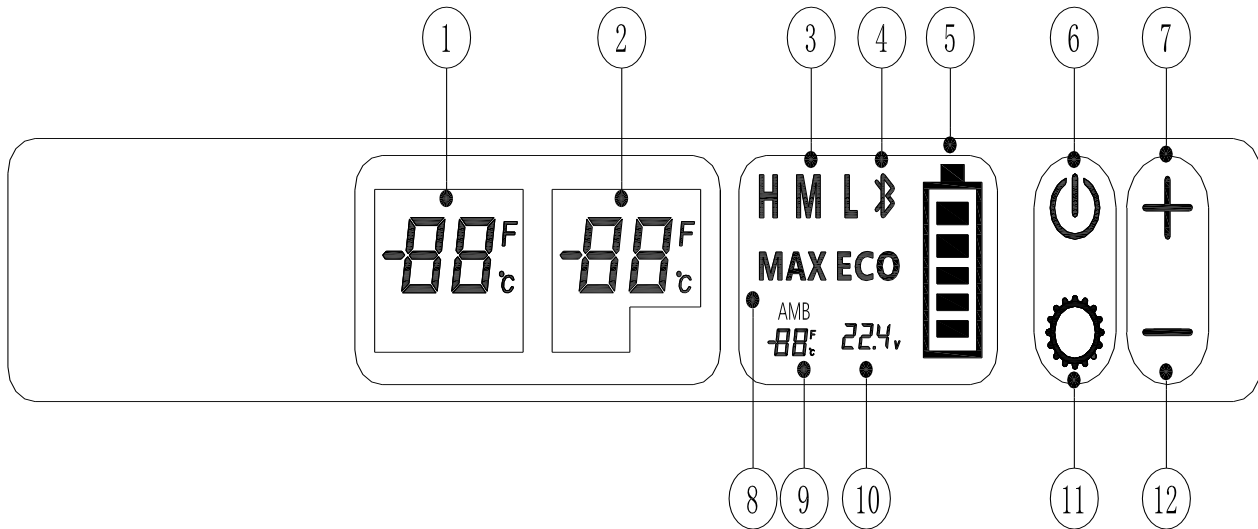
- Engine ON: select H, M or L, and use the car port power supply to operate the refrigerator. Different cars may have different output voltages. If E1 displayed, just adjust the battery protection from H to M or L.
- Engine OFF: Operating with car battery, most cars will stop power supply after engine off, while some cars will continue to power supply after engine off. You should adjust the refrigerator battery protection mode to "H"; otherwise the car battery may run out of power, which may lead to insufficient power to start the car. You can also unplug the car charger and use the refrigerator internal battery to run. If you do not want to use the car battery, it is recommended to disconnect the car charger from the refrigerator and set the battery protection to mode "L". This will allow the refrigerator battery to work longer in safe and independent conditions.

DC Power Instruction

- Engine ON: select H, M or L, and use the car port power supply to operate the refrigerator. Different cars may have different output voltages. If E1 displayed, just adjust the battery protection from H to M or L.
- Engine OFF: Operating with car battery, most cars will stop power supply after engine off, while some cars will continue to power supply after engine off. You should adjust the refrigerator battery protection mode to "H"; otherwise the car battery may run out of power, which may lead to insufficient power to start the car. You can also unplug the car charger and use the refrigerator internal battery to run. If you do not want to use the car battery, it is recommended to disconnect the car charger from the refrigerator and set the battery protection to mode "L". This will allow the refrigerator

battery to work longer in safe and independent conditions.

3. Operation



- | | | |
|-----------------------------------|--------------------------|------------------------|
| 1. Big Zone Temperature Display | 5. Battery power display | 9. Ambient temperature |
| 2. Small Zone Temperature Display | 6. ON/OFF | 10. Power Voltage |
| 3. Battery Protection Gear | 7. UP "+" | 11. SETTING |
| 4. APP connection symbol | 8. Cooling Mode | 12. DOWN "-" |

- When Power Off, press the "ON/OFF" one time to turn on the refrigerator; When Power on, press the "ON/OFF" one time and the refrigerator will shut down.
- Temperature Setting:
Press SETTING one time, The left preset temperature flashes, and then press up or down to set up and down the preset temperature of the big zone
Press SETTING two times, The right preset temperature flashes, and then press up or down to set up and down the preset temperature of the small zone
- Cooling Mode Setting:
Press SETTING three times, eco / max icon flashes (selected mode flashes, default max), and then press up or down to switch eco / max
- Car battery protection Setting:
Press SETTING four times, L / M / H icon flashes (selected mode flashes, default H), and then press up or down to switch L / M / H
L is recommended to set when with battery power
H is recommended to set when with vehicle power supply

	12(V)		24(V)	
	Voltage Stop	Voltage Start	Voltage Stop	Voltage Start
H	11.3	12.6	24.3	25.7
M	10.8	11.8	22.3	23.7
L	9.6V~31.5V			
	Low protection voltage	Low Starting voltage	High protection voltage	High starting voltage
	9.6	10.9	31.5	30.5

- Close one of the fridge zone
Keep pressing “up”, turn off the big zone and big zone display off; Keep pressing “down”, turn off the small zone and small zone display off.

4. Daily cleaning and maintenance

- Cleaning

Clean and maintain the refrigerator every other week. Wipe the inside and outside surfaces of the refrigerator with a warm and wet rag. If it is too dirty, wipe it with a neutral detergent, and then use a washed rag to dry the water stains.

- Plastic parts maintenance

If the oil (animal or vegetable oil) is attached to the plastic parts in the box for a long time, the plastic is easy to age or crack, and gives off peculiar smell. Therefore, we should form the habit of regular cleaning.

It is strictly forbidden to clean the refrigerator directly with water to prevent the electrical insulation from reducing and rusting. The following things will damage the coating and plastic parts, which can't be used for cleaning: alkaline detergent, soap, grinding powder, hot water, brush, thinner, gasoline, alcohol.



5. Troubleshooting

- Refrigerator not work

——Check whether the power supply is faulty and whether the power supply voltage is too low.

—Check whether the power plug is in good contact.

—Check whether the fuse is broken。

The fuse is in the head of the power line cigarette lighter, Remove the cigarette lighter screw and open the cover to replace the fuse.

Refrigerator fault, compared with the error code prompt for troubleshooting.

Code	Fault
E1	Battery Protection Failure
E2	Fan Failure
E3	Compressor Start Failure
E4	Min / Max Speed Fault
E5	Overheat Protection Fault
E6	NTC Failure

- ·Food Frozen by the refrigerator

—Too low set temperature

- Poor Fridge/Freezing

—Food storage is too large and crowded, cold air circulation is not smooth.

—Refrigerator door not closed properly

—The door seal is damaged or deformed, and the seal is not tight

—Poor ventilation at cooling fan

—Too much hot food inside

—Sunlight or heat source nearby

- Sound of running water in the box

—This is the flow sound of refrigerant, it is ok.

- Abnormal noise

—Cooling fan failure.

—There are loose or falling parts inside the refrigerator

6. Safety instructions

Nonstandard operation may endanger personal safety or damage the refrigerator.

Please refer to safety instructions for current or voltage related hazards. Failure to comply with this instruction may result in damage to or damage to the refrigerator and impair its function.

Please make sure that only items suitable for setting the refrigeration temperature are put into the refrigerator.

If you need to store drugs, please verify whether the refrigeration efficiency of the refrigerator is consistent with the requirements of drugs.

- This product cannot be placed in reverse 90 degrees, let alone inverted.
- If the power cord is damaged, it must be repaired by the manufacturer, customer service or similar qualified personnel. Improper repair may cause injury to the product and personnel.
- This product cannot be cleaned or maintained by children.

- This product should be placed or used in a place out of the reach of children under 8 years old.
- Do not put explosive objects (such as spray cans containing flammable agents) in the refrigerator.
- Check the input voltage of refrigerator is consistent with the power supply voltage.
- When it is out of service, pull out the wire plug from the socket or cigarette plug.
- Do not open the control circuit.
- Refrigeration equipment cannot be transported with perishable materials or materials containing solvents.
- Food should be stored in the original packaging or matching containers.
- Make sure the power cord and plug are dry before starting.
- It is forbidden to use electrical appliances except those with special functions recommended by the supplier in the refrigerator.
- Start the refrigerator in a dry place to avoid splashing water.
- Refrigerators and wires should be protected from moisture and rain.
- Refrigerators should not be placed near open fire or other heat sources (heater, direct sunlight, gas, etc.).
- During operation, please put it in a ventilated place for heat dissipation and ensure that the ventilation slot is not covered.
- Refrigerator away from walls and other objects, to ensure air circulation, can make the refrigerator refrigeration effect better.

● 7. Specification

Model	N75	N75E	N95	N95E
Capacity (L)	75L	75L	95L	95L
Setting Temp. Range	-18℃ ~ 10℃			
Display Temp. Range	-20℃~40℃			
Ambient Type	T / ST / N / SN			
Electrical safety level	III			
DC Power (V)	12/24V			
DC Fuse (A)	10			
Rated Power (W)	65			
Rated Current (A)	5.4A/2.7A			
Battery	No	Option	No	Option
Refrigerant R134a (g)	72g	72g	75g	75g
Product Dimension (mm)	990*570*435	990*570*435	990*570*500	990*570*500
Package Dimension (mm)	1080*655*515	1080*655*515	1080*655*570	1080*655*570
Product Weight (Kg)	27	28.5	27.7	29.2

Treatment: Do not treat this product as unclassified municipal waste.
Scrapped machines need to be collected separately for special treatment.

