



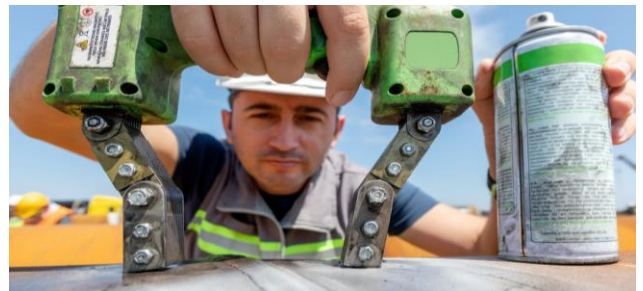
RENT • LEASE • BUY
CALIBRATIONS AND REPAIR
IN-HOUSE OR ON-SITE

RENTAL PRODUCTS CATALOG

NOVEMBER 2024



RADIOGRAPHY



MAGNETIC PARTICLE



ULTRASONIC



VISUAL



PMI



HARDNESS TESTING



MATERIAL TESTING



EDDY CURRENT

Industrial Radiography Inspection Equipment

Item Number	Equipment Description
R0900a	Carestream - Industrex Laptop View Station
R1000a	Carestream - HPX-DR 3543 PE Non-Glass, Large Format Detector
R1010a	Carestream - HPX-PRO Portable CR System with Transport Case
R1020a	Carestream - HPX-1 CR System with Transport Case
R1025a	QSA Global - OpenVision DX Corrosion Under Insulation (CUI) RTR System
R1026a	TELEDYNE ICM - GO-SCAN C-VIEW Real Time X-Ray Inspection System
R1030a	Microtek - NDT-2000 Film Digitizing System with Automatic Film Feeder
R1040a	COMET - EVO 300D (Directional) PXS with Transport Cases
R1050a	COMET - EVO 4-Legged Tube Stand
R1060a	GOLDEN - Model XRS4 370kV Pulsed X-Ray Generator
R1061a	GOLDEN - Model XRS4MD 370kV Pulsed X-Ray Generator
R1062a	GOLDEN - Tripod Stand for Pulsed X-Ray Generator

Magnetic Particle & Blacklight Inspection Equipment

Item Number	Equipment Description
R1100a	Magnaflux - Y-2 AC Yoke with Detachable Cord
R1110a	Parker Research - B-200 AC Yoke
R1120a	Parker Research - DA-400 AC/DC Yoke
R1700a	Spectro-UV Clarity 365 UV-A Inspection Flashlight
R1705a	LABINO - UVG3 2.0 Series Floodlight UV-A Inspection Flashlight Kit
R1710a	LABINO - Apollo 3.0 Series Light Meter

Ultrasonic Thickness, Flaw, Phased Array and Blocks

Item Number	Equipment Description
R1200a	Evident - 38DL Plus Ultrasonic Thickness Gauge w/ 5-Step 1018 Steel Test Block
R1201a	Evident - 39DL Plus Ultrasonic Thickness Gauge w/ 5-Step 1018 Steel Test Block
R1210a	Danatronics - ECHO 9DLW Ultrasonic Thickness Gauge w/ 5-Step 1018 Steel Test Block
R1221a	Sonatest - WAVE Ultrasonic Flaw Detector
R1230a	Sonatest - WAVE Accessory Kit (Transducers, Wedges, Cables & DSC Block)
R1223a	Sonatest - X2B-001, 5 MHz 32 Element Transducer with 0° and 60° Wedges
R1250a	Evident - OmniScan X3 32:128 Phased Array and TFM Flaw Detector
R1240a	4 Step Calibration Block (1018 Steel)
R1241a	4 Step Calibration Block (304 Stainless Steel)
R1243a	5 Step Calibration Block (304 Stainless Steel)
R1244a	5 Step Calibration Block (4340 Steel)
R1245a	5 Step Calibration Block (316 Stainless Steel)

Visual Inspection Systems

Item Number	Equipment Description
R1300a	Wohler - VIS 700 Plus HD Inspection Camera
R1320a	Wohler - Camera Trolley Kit w/ Stabilizing Sleeve for Light Ring
R2000a	Mitcorp - X1000 6mm x 7m (All Way Articulating) Complete Portable Videoscope Kit
R2005a	VSNDT - 6mm x 7m (All Way Articulating) Complete Portable Videoscope Kit

PMI Hand Held XRF Analyzers/ LIBS Carbon Analyzer

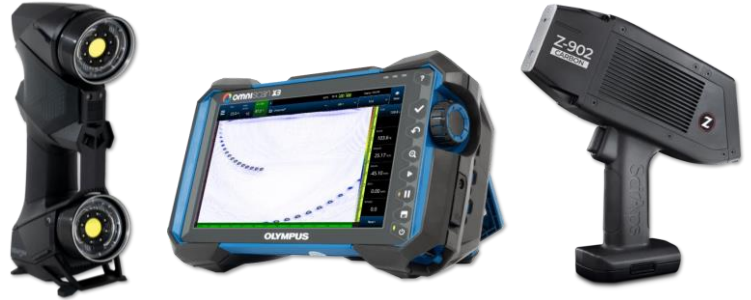
Item Number	Equipment Description
R1400a	ThermoFisher - Niton XL2 980 Plus
R1405a	ThermoFisher - Niton XL5 Plus
R1410a	ThermoFisher - Niton Apollo LIBS
R1415a	SciAps - X50 XRF Alloy Analyzer Kit
R1420a	SciAps - Z 902+ LIBS Analyzer Kit

Miscellaneous & Eddy Current Testing Equipment

Item Number	Equipment Description
R1500a	Fischer - FMP30 Feritscope
R1510a	Fischer - DMP30 Feritscope
R1610a	Screening Eagle - Equotip 550 Leeb D & UCI Hardness Testing Kit
R1800a	30" Flat & 18" Corner Vacuum Box System
R1900b	IDMAG - Pipeline Demagnetizing System - For Pipes Up to 30" in Diameter
R1910b	IDMAG - Power Multiplier - Needed for Pipes 30" in Diameter and Greater
R2500b	Evident - NORTEC 600 Eddy Current Flaw Detector with Probe Weld Kit
R2600a	Eddyfi - ECTANE3 Model ECTANE3-E128RNMI Surface Array and Tube Inspection Test System w/ Laptop
R2700a	CREAFORM - HandySCAN BLACK Elite with VXintegrity Software Suite and Laptop Workstation

RENTAL PROTECTION PLAN (RPP)

Protect Your Investment



Rental Liability	Damage Protection
<ul style="list-style-type: none"> Significantly reduces your liability for damaged or stolen equipment. Avoid claims against your insurance. The RPP gives you coverage when your business insurance leaves you exposed. 	<ul style="list-style-type: none"> RPP provides coverage for repairs due to accidental or incidental damage to equipment. Damage resulting from abuse or misuse is not covered - abuse or misuse is defined as equipment used in an application it was not designed for or an application that exceeds the manufacturers' specifications.
Theft Protection	
<ul style="list-style-type: none"> You are only responsible for a percentage of the replacement cost. A police report must be filed and notification given to QED within 48 hours of the customer being made aware of stolen equipment. If a police report is not provided, the customer is fully liable for the entire cost of replacement. In the event that the stolen equipment is recovered, QED will retain ownership. 	

Plan Cost	Repair	Theft & Loss
15% of List Rate	50% Coverage	30% Coverage

Examples of RPP Savings

50% Coverage of Damage			30% Coverage of Stolen Equipment		
<i>Damage HPX-DR 3543 System (R1000a)</i>			<i>Stolen FMP30 Feritscope (R1500a)</i>		
	With RPP	Without RPP		With RPP	Without RPP
List Rate (Monthly)	\$ 6,300	\$ 6,300	List Rate (Weekly)	\$ 320	\$ 320
RPP (15%)	\$ 945	-	RPP (15%)	\$ 48	-
Repair Cost (Mfg. Repair Cost)	\$ 50,000	\$ 50,000	Replacement Cost (Mfg. List Price)	\$ 5,750	\$ 5,750
RPP Benefit (50% of Repair)	\$ 25,000	-	RPP Benefit (30% of Replacement)	\$ 1,725	-
Total Customer Cost (Rental & Repair)	\$ 32,245	\$ 56,300	Total Customer Cost (Rental & Replacement)	\$ 4,393	\$ 6,070

Don't go without protection! Ask for the RPP on your next rental!

All RPP is based on list rental rate. Customer is responsible for all rental rates up until the day of notification to QED. Ask your local QED office for more details on our Rental Protection Plan (RPP) Agreement.

RADIOGRAPHY

Item # R1000a

Carestream - HPX-DR 3543 PE Non-Glass, Large Format Detector

NEW NON-GLASS DR!

Carestream NDT once again introduces breakthrough technology for NDT field imaging with our new non-glass DR detector. The new HPX-DR Non-Glass detector design incorporates a tougher plastic material instead of glass for maximum durability against the rigors of NDT field work.

The HPX-DR Non-Glass detector virtually eliminates costly repairs for broken glass. We're so confident in the design and reliability of our new durable detector that we're offering a two-year warranty!

The HPX-DR detector is unique in design – coming standard with a rugged, weatherproof enclosure perfect for remote field work. Unlike other panels that claim a weatherproof design when used inside their protective carrying case, this detector has an IP57 enclosure rating without the protective case! With the HPX-DR you can stop wrapping your DDA panel in bags and keep working in rain, snow, mud or whatever Mother Nature throws at you!

- **REDUCED EXPOSURE** - DDA panels are highly sensitive. Combine this with the ability to do frame averaging and you will likely be able to reduce your exposure time and still capture the sensitivity needed for your critical inspection task.

- **FASTER** - Uses no disposable media in the process, eliminating cassette loading and unloading time, developing, processing and reloading for the next shot. The HPX-DR detector offers quick start up and calibration, and rapid image display after acquisition. Produce high quality digital images in seconds for immediate analysis.

- **EASIER** - The HPX-DR detector is lightweight and compact with an all-weather design that is simple to operate. In the lab, it can be operated on a powered tether and in the field it can run 100% on battery. With the 'hot swap' feature the panel can remain on when changing batteries, increasing uptime.

- **WIRELESS** - The HPX-DR detector can operate completely wireless giving the user full freedom of movement and minimizing set-up time on site. This is especially helpful for rope access teams looking for minimal weight, high sensitivity and a powerful wireless connection.

EXPOSURE INTERFACE BOX (EIB)

- Provides a standalone battery powered Wi-Fi access point to HPX-DR Detectors
- Optionally provides a communications interface to support select Golden pulse generator models.
- The pulse generator interface enables timing coordination of the HPX-DR Detector image capture with the Golden X-ray pulse generation.



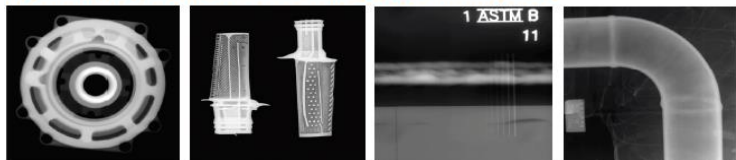
EXPOSURE INTERFACE BOX (EIB)



Mount kit with pipe cleats to reduce stress on the detector for pipeline imaging.

- 139 μ Pixel Pitch
- 139 μ Spatial Resolution
- GOS DRX Standard Scintillator
- Portable at 12.5 lbs (5.7 Kg)
- Heavy Duty Shielding
- Exposure Range up to 3 MeV

HIGH RESOLUTION OUTPUT IN THE LAB OR IN THE FIELD



CarestreamNDT

RADIOGRAPHY

Item # R1010a

Carestream - HPX-PRO Portable CR System with Transport Case

The HPX-PRO CR system is built for high image quality, improved productivity and extreme portability. This next-generation system is lightweight (35 lbs.), portable CR imaging solution that is quick to deploy and rapidly produces high-quality images utilizing a new single-pass scan/erase protocol. The HPX-PRO's software incorporates a new user interface designed to get you set-up and imaging fast, with batch mode capacity to keep in pace with extreme process conditions like pipeline imaging. The new software tools also provide quick image analysis and customized reporting for generating unique customer reports in seconds. From hardware to software, to deep in the field and instant image sharing, the HPX-PRO is a complete system, designed to improve productivity.

Carestream spent a considerable amount of time working in the field with mobile x-ray technicians to help improve workflow. The HPX-PRO is only one piece of the total imaging solution. From shot time to final reporting, everything had room for improvement. And we met the NDT industries challenge.



Built for NDT

- Rigid aluminum construction with vibration damping feet
- Filtered air vents - replaceable air filter to keep out dust and dirt
- Protective plate feed doors seal off the unit from dirt and dust when in transport or not being used
- Detachable handle - mobile film labs don't have a lot of room - every inch counts
- Battery power mounts for in-use and storage mount for backup, 4 hours standby time and 45 minutes imaging time per battery
- Mounting bracket for security in transport on rough roads
- LED erase lamps for high efficiency and low power consumption

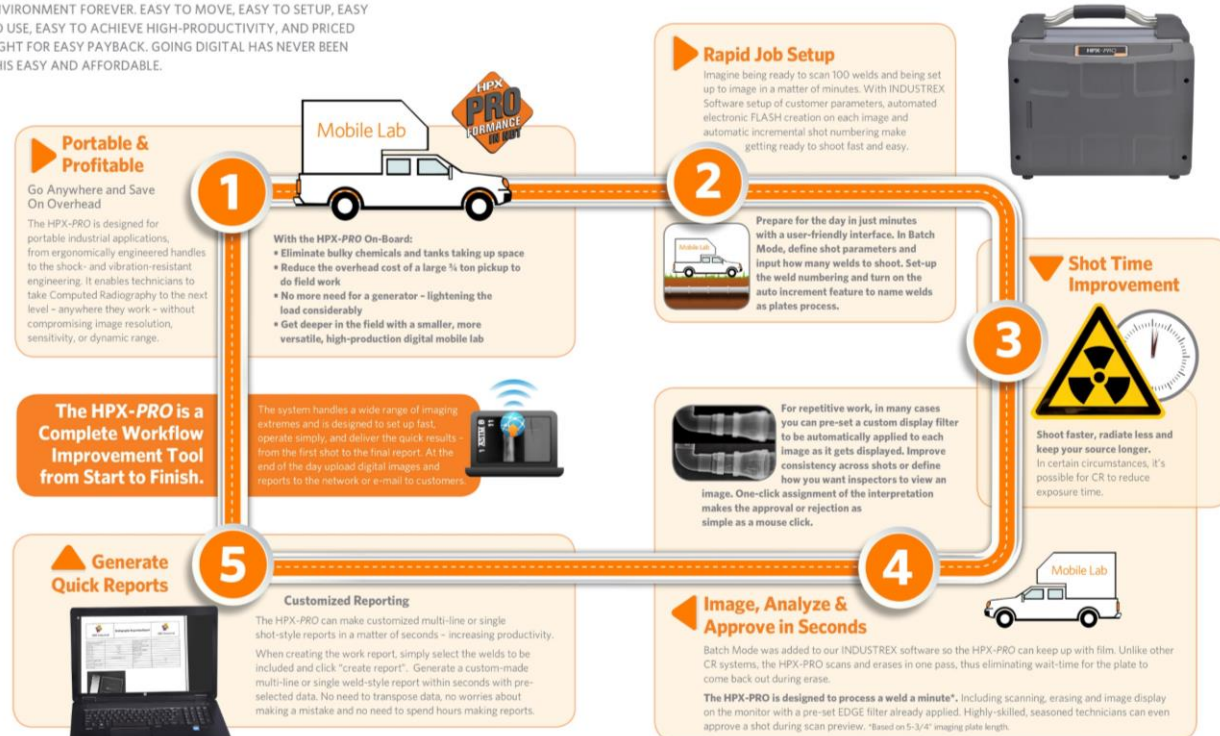
Designed for High Throughput

- Ships complete and easily installed in less than 5 minutes on-site by customer
- Maximum 6-inch wide x 96-inch length plate sizes
- INDUSTREX Digital Viewing Software installed and tested prior to shipping
- Custom EDGE image display filter with 10 predefined filters including 2 specifically for gamma work
- 25 micron, 50 micron & 100 micron resolution

PRO-fessional Workflow for High PRO-ductivity

THE HPX-PRO WILL CHANGE THE WAY YOU WORK IN A MOBILE ENVIRONMENT FOREVER. EASY TO MOVE, EASY TO SETUP, EASY TO USE, EASY TO ACHIEVE HIGH-PRODUCTIVITY, AND PRICED RIGHT FOR EASY PAYBACK. GOING DIGITAL HAS NEVER BEEN THIS EASY AND AFFORDABLE.

HPX-PRO On-the-Go



RADIOGRAPHY

Item # R1020a

Carestream - HPX-1 CR System with Transport Case

The HPX-1 Plus offers many improvements. Improved optics for better imaging, up to 30% faster throughput on long saturated plates (very high exposure), an improved imaging plate transport system to protect imaging plates, higher mechanical reliability and a more user-friendly DICONDE compliant software for the best experience in digital imaging.

The HPX-1 Plus is a full width CR reader capable of running extra long imaging plates. The system has a wide dynamic range with high sensitivity, making it ideal for almost any type of imaging application. Whether you're using a gamma or X-ray source, the HPX-1 Plus' high sensitivity can help reduce shot time. It shows exceptional performance in weld applications, delivering weld-quality images consistently and dependably.

Carestream's award-winning HPX family of digital products have improved field reliability and enhanced the capabilities in the NDT marketplace. Long plate and multi-plate scanning combined with SmartErase boosts output productivity so you can get more done in a day than ever before. Our exclusive positive pressure filtered air system keeps dust and dirt out for cleaner images in both the laboratory and in remote operations. With a shock and vibration resistant design your team can image in the harshest of environments bringing a new level of confidence to digital imaging in the field.



Ultra High Image Quality

Pixel Pitch: 25µm, 35µm, 50µm and 100µm operation

Spatial Resolution: 50 microns or better (12 lp/mm)

Laser Spot Size: 20µm (measured at 85% of peak)



Positive Pressure Fans for Dirty NDT Environments

Let's face it, NDT environments can be dirty. Drum and flat bed style scanners collect contaminants on the surface where they can be transported into the system or into the optical path and be imaged. HPX-1 Plus is the only CR system on the market that has positive airflow to keep contaminants outside the unit.



Dual Air Filters (including HEPA)

Clean air is critical to keeping the equipment cool and the imaging areas clean. The HPX-1 Plus is the only system outfitted with dual filters to make sure the environment is kept outside.



Image Plate Flexibility

HPX systems are one of the most flexible CR systems on the market capable of handling raw imaging plates, multiple plates at one time, custom cut sizes (with Plate Carrier), hard cassettes and long Plates (up to 60") without special feed guides.



Plate Transportation System

The HPX-1 Plus plate transport system has always minimized contact with the imaging plate. Unlike magnetic plate drive systems that require uniquely designed imaging plates (which can be costly) or drum systems that advise using plate protective covers to avoid plate damage, the HPX-1 Plus run plates phosphor side up with a proven transport system that won't damage your imaging plates.



Improved Imaging

HPX-1 Plus' improved PMT's improve its sensitivity and reduce unwanted artifacts. CR systems often also make it possible to lower your exposure while still achieving the required sensitivity. Our adjustable PMT and Laser Power allow you fine tune every image for optimum capture every time.



Powerful Software

HPX-1 Plus is operated using our powerful INDUSTREX software that includes a host of features for measurement, custom designed EDGE Image Filters, full DICONDE compliance, and many other tools designed specifically for NDT.



HPX-1 Plus



RADIOGRAPHY

Item # R1026a

TELEDYNE ICM - GO-SCAN C-VIEW Real Time X-Ray Inspection System

GO-SCAN C-VIEW

Real-time X-ray for CUI Inspection



Real-time X-Ray for CUI Inspection

Go-Scan C-view is a light weight ruggedized live video X-ray imaging system specifically designed for hand-held inspection, such as Corrosion Under Insulation inspection (CUI). It includes a high speed and high resolution CMOS imager and a battery-operated 70kV x-ray source designed for portable field operation. The video imaging system captures in real time images up to 30 fps and displays them on a hand held mobile device equipped with our customs made Go-Scan C-viewer application.



Pixel Pitch
99 μ m



CMOS
TECHNOLOGY



WIRELESS
OR CABLE



RUGGEDIZED



LIVE VIDEO



GO-SCAN
C-VIEWER APP

Item # R1030a

Microtek - NDT-2000 Film Digitizing System with Automatic Film Feeder

NDT-2000 Film Digitizing System is a down-to-earth digitization solution developed exclusively by Microtek for use in NDT/RT industry. Besides retaining great functions of the original MII-900 Plus, such as 1200-dpi (21 μ m) optical solutions, 16-bit grayscale, and exclusive AFF and multi-channel trays, NDT-2000 adopts better optical density via innovative image technology and therefore it can enrich image layers and meet with high requirements about image quality from the NDT/RT industry.

Features

- Equipped with 1200 dpi (21 μ m) resolutions, 4.5D optical density, and 16-bit grayscale
- Optional Automatic Film Feeder (AFF) and Multi-Channel Tray enhance working efficiency
- Maximum scanning area is up to 14" x J33200", supporting most sizes of industrial films
- Bundled with multi-functional image management software, including functions of file building, searching, measuring, annotating, zooming, report making, saving and burning; meeting with the DICOM standard
- Supports image formats of DCM, BMP, JPEG, and TIF

Scan Control Module

- Resolution: 150, 300, 600, 1200 dpi
- Scan Area: Up to 14" x 200"
- Support: AFF, Multi-tray Feeder
- Depth: 8 or 16 bits (Default)
- File: Tiff, JPEG, JPEF 2000, BMP, etc.
- Integration: TWAIN

Image Archive and Viewer

- File: DICOM
- Local/network database
- Image Enhancement Tools
- Filters
- Report
- Send images over DICOM network protocol

Software selection:

AcuScreen NDT Pro

MICROTEK



RADIOGRAPHY

Item # **R1040a**

COMET - EVO 300D (Directional) PXS

Built to Last - It's Robust and Reliable

Designed and built in Denmark; the EVO systems are comprised of the best components and assembled with the utmost care - making them reliable, long-lasting, and a sound investment. They are fitted with a high-quality metal ceramic X-ray tube, and the robust composite casing now protects all vital parts even better. The systems meet the IP65 standard, making them fully operational in dusty and wet conditions.

It's Light-weight and Easy to Handle

The ergonomic design and the low weight of 64 lbs. make the EVO 300D easy to handle and re-position. A broad temperature range from -4°F to +122°F makes the EVO systems reliable and ensures smooth operation even in extreme environments. The intuitive interface allows for a smarter workflow.

High Performance Capabilities

Built to meet the highest international safety standards, each unit is individually tested and measured for safety and accuracy. The EVO 300D features a combination of 300 kV and 900 W constant potential X-ray power for high penetration - making it well suited for all heavy-duty field inspection jobs.



CONTROL EVO

EVO 300D

Beam type: Directional
Nominal voltage: 300 kV
mA adjustment: 0.5 - 4.5 mA
Max. X-ray power: 900 W
Focal spot, EN 12543: 3.0 mm



Item #

R1061a

GOLDEN - Model XRS4MD 370kV Pulsed X-Ray Generator

Golden Engineering
Portable X-ray Technology



Gold Side Beam Cap

Rotates 360° Operate in tight space

Blue Front Beam Cap

Compatible with existing accessories Minimized image edge fade

Field-Interchangeable Caps

Model	kV	Penetration in Steel	Avg. Dose mR/Pulse*	Pulse Width	Pulse Rate per Second	Rear Standoff Distance
XRS4	370	1.75"	4.5 - 7	10 ns	9	20 Feet

GOLDEN XRS-MD Multi-Directional Series

Introducing the NEW XRSMD (Multi-Directional) Series Portable X-ray Generator. The XRS4MD is the first of its kind to combine front and rotational side beam in one unit. It allows the operator to shoot as a standard generator out the front of the unit using the blue cap or from the side by changing to the gold 90° cap that also rotates 360°. This is a new unit design and is NOT available as an upgrade to existing XRS4 units.

Golden X-ray generators are compatible with Conventional Radiographic Film, Computerized Radiography (CR) or Digital Radiography (DR) inspection systems. This provides users with the flexibility to develop a complete radiographic system best suited to their individual needs.

Features

- 20V Lithium-ion Battery
- Menu-based software
- Simple variable pulse setting
- Modular construction
- Easy-access 7-pin K Lemo remote cable connector above the battery
- Picatinny Rails for mounting accessories
- Easily removable top plate
- Battery includes charge indicator



**MANUFACTURER OF
LIGHTWEIGHT,
PORTABLE X-RAY
MACHINES**

MAGNETIC PARTICLE

Item # R1100a

Magnaflux - Y-2 AC Yoke with Detachable Cord



AC Electromagnetic Yoke

The Y-2 is an AC electromagnetic yoke, ergonomically designed to improve productivity and reduce operator arm and wrist fatigue. The yoke generates a strong AC magnetic field for the detection of surface indications during magnetic particle testing.

Lightweight with an ergonomic grip and trigger, the Y-2 is designed for the rugged demands of field inspection. Featuring a field swappable cord and isolated trigger switch; the Y-2 is easily serviceable because a severed cord should not stop a job from getting done.

Benefits

Increase inspector productivity and reduce physical fatigue

- Less arm strain, wrist fatigue and physical stress help operators get more done due to the lightweight and ergonomic design.
- Easily position the yoke in any direction with lightweight, heavy-duty and powerful electronics components.

Keep tools in service with a design that's built to last

- Cords and triggers can be easily replaced, so work doesn't stop and tools aren't scrapped due to accidental damage.
- Prevent dust and dangerous water damage with an IP54 o-ring sealed housing.

Features

- IP54 sealed housing resists dust and water
- Field-swappable power cord
- Isolated, replaceable trigger switch
- Steel shields for leg protection
- Exceeds ASTM lifting specifications
- Convenient carrying case supplied with all yoke shipments



Ergonomic Handle & IP54 Sealed Housing Resists Dust and Water



Item# R1120a

Parker Research - DA-400 AC/DC Yoke



AC/DC Electromagnetic Yoke

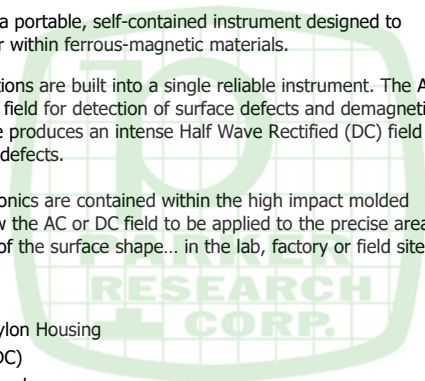
The DA-400 Contour Probe is a portable, self-contained instrument designed to produce a magnetic field on or within ferrous-magnetic materials.

The selective AC and DC functions are built into a single reliable instrument. The AC mode produces an intense AC field for detection of surface defects and demagnetizing after inspection. The DC mode produces an intense Half Wave Rectified (DC) field for detection of some subsurface defects.

Controls and solid-state electronics are contained within the high impact molded housing. Articulating legs allow the AC or DC field to be applied to the precise area of inspection on nearly any part of the surface shape... in the lab, factory or field site.

Features

- High-Impact, Glass-Filled Nylon Housing
- AC & Half Wave Rectified (DC)
- Exceeds ASTM Lifting Standards



UV-A EQUIPMENT



Item # R1705a

**PENETRANT RESISTANT • CURRENT
REGULATOR • HOMOGENEOUS BEAM • IP68
WATERPROOF & DUSTPROOF**

LABINO - UVG3 2.0 Series Floodlight UV-A Inspection Flashlight Kit

UVG3 2.0 Series UV-A Inspection Flashlights

Powerful, penetrant resistant and with an Ingress Protection 68 (Waterproof). The beam profile is probably the largest and smoothest from any UV-A torch light on the market. Depending on the model, the beam diameter is 3-5 inches and with intensities that vary from 4,000 to 80,000 $\mu\text{W}/\text{cm}^2$! Battery running times are up to 8 hours.

UVG3 2.0 Single Kit Package Includes:

UVG3 2.0 lamp, UV Glasses, External Charger, Car Charger, 2 Extra Batteries, Carrying Case, Belt Holster and Rubber Bumper.



**UVG3 2.0 Floodlight is the only torch UV LED
light in the world in compliance with Rolls-
Royce RRES 90061 and Airbus AITM-1001!**

Features

- **Compliance:** ISO 3059, ASTM E3022, RRES 90061, AITM6-1001, Pratt & Whitney & Boeing & USAF
- **UV Intensity:** 4,000 $\mu\text{W}/\text{cm}^2$ at 15"
- **UV Coverage:** \varnothing 4.8 Inches at 15"
- **Battery Run Time:** 4 Hours (Kit Includes Extra Battery & Charger)
- **IP Rating:** Water-Proof & Dust-Proof (IP68 Rated)

Item # R1710a

LABINO - Apollo 3.0 Series Light Meter

Apollo 3.0 UV & White Light Meter w/ Case

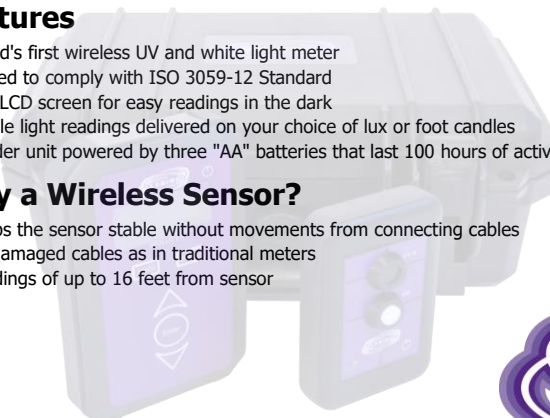
The Apollo meter is engineered for use in Non Destructive Testing. The visible light sensor is specially designed to measure visible light at short wavelengths (near UV) and starts measuring at 380 nm. The spectral sensitivity of the Apollo visible light sensor closely relates to the reception of the human eye (CIE Standard Observer).

Features

- World's first wireless UV and white light meter
- Tested to comply with ISO 3059-12 Standard
- Red LCD screen for easy readings in the dark
- Visible light readings delivered on your choice of lux or foot candles
- Reader unit powered by three "AA" batteries that last 100 hours of active measurement

Why a Wireless Sensor?

- Keeps the sensor stable without movements from connecting cables
- No damaged cables as in traditional meters
- Readings of up to 16 feet from sensor



ULTRASONIC - THICKNESS & FLAW DETECTION

Item # R1201a

Evident - 39DL Plus Ultrasonic Thickness Gauge w/ 5-Step 1018 Steel Test Block

Faster Thickness Results

Streamline your ultrasonic thickness inspection process with one fast, connected, and reliable handheld gauge. The 39DL PLUS gauge works as a precision or corrosion thickness gauge for demanding applications. With world-class ultrasonic capability, fast scanning speeds up to a 60 Hz update rate, and fully integrated wireless connectivity, our flagship handheld gauge delivers results you can trust in a seamless workflow.

Affordable Part Scanning

Get the scanning speed of a flaw detector with the ease of use and affordability of a thickness gauge. For inspection codes that require a 60 Hz display update rate for scanning, the 39DL PLUS thickness gauge offers an affordable alternative. With an industry-leading* 60 Hz update rate for handheld thickness gauges, the 39DL PLUS instrument makes it easier to find thin spots when scanning for minimal thickness areas on pipes and other assets affected by corrosion.

Easy to Carry, Easy to Use

Weighing only 0.83 kg (1.83 lb), our handheld gauge is comfortable to carry and use in the field or on the production floor. Operate the simple, ergonomic keypad with the left or right hand for quick access to all functions



5-Step 1018 Test Block

Included with All Thickness Gauge Rentals

EVIDENT

Key Features

- **Connected:** Data transfer options include integrated Wi-Fi, Bluetooth, USB, RS-232, and a removable microSD card
- **Fast:** Scan for minimal thickness areas at a 2 times faster display update rate
- **Versatile:** Tackle multiple thickness applications with a full line of dual and single element transducers
- **Reliable:** Obtain accurate, reproducible measurements with exceptional signal quality, stable waveforms, and optimized algorithms

Item # R1210a

Danatronics - ECHO 9DLW Ultrasonic Thickness Gauge w/ 5-Step 1018 Steel Test Block

ECHO 9DLW

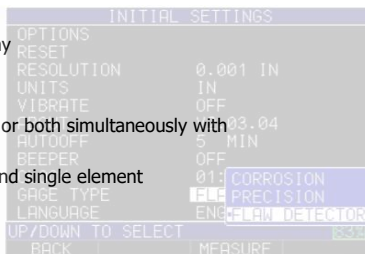
Hand-Held Digital Ultrasonic thickness gage with 3.5" Sunlight Readable Color Display for thickness only including: Echo to Echo Software, Plastic Carrying Case, 2 Oz. bottle of couplant (C-02G), Re-Chargeable Li. Ion batteries, DKS537, 5MHz, .375" diameter Transducer with potted cable, Charger adapter with USB cable and data xl interface program.

Key Features

- Simultaneous Live Color A-Scan and Thickness Display
- 3.5" Sunlight readable color display
- Field upgradeable software options include
- Fast/Min and Fast/Max displays minimum, maximum or both simultaneously with actual thickness at 25 Hz
- Compatible with a wide variety of Danatronics dual and single element transducers
- Multiple languages
- Datalogger interfaces with Microsoft Excel
- Designed for IP67
- Made in the USA

Applications

- Boiler Tubes
- Pressure Vessels
- Storage Tanks
- Ship Hulls
- Piping



5-Step 1018 Test Block

Included with All Thickness Gauge Rentals



ULTRASONIC - PHASED ARRAY

Item # **R1221a**

Sonatest - WAVE Ultrasonic Flaw Detector

WAVE - Interactive Flaw Detector

Next generation technology at your fingertips

What if you could tailor the settings on your UT device and alter it to your own process and people's needs? An instrument where all the useful parameters are pre-set and available in less than two clicks? Now you can.

Introducing **WAVE** by Sonatest. It integrates the latest technologies available in order to create a revolution in the ultrasonic non-destructive testing equipment market.

Not only is it innovative, but the customisable interface also optimises the daily workflow, and a unique and embedded interactive scan plan, with ray-tracing capability and simulation tools, consolidates your results.



Mitigate false calls with the new WAVE Interactive Scan Plan

The **WAVE** Interactive Scan Plan has been developed to ease diagnostics on the inspected part. The scan plan can reproduce complex geometries such as curved surfaces and T-Joints. Combined with a real-time Raytracer, this unique feature facilitates the distinction between a real flaw and a geometrical indication, thus avoiding unnecessary repair.

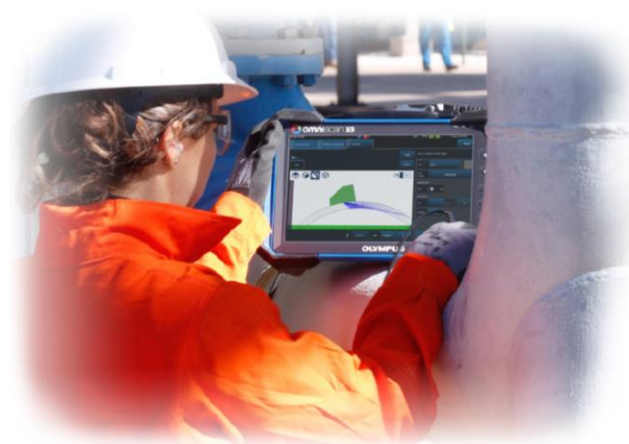
Reach performance & conformity with the Wave Application Concept

The **WAVE** Application Concept combines conformity and performance allowing the operator to customise the user interface according to his/her specific procedure. A lean manufacturing philosophy means less training and long-term financial benefits. The intuitive user interface with an easy to use display will guarantee workflow optimisation as well as preventing potential operational errors.

Item #

R1250a

Evident - OmniScan X3 32:128 Phased Array and TFM Flaw Detector



The Workhorse of Your Inspection Fleet

The OmniScan X3 flaw detector offers tools to help you complete your work efficiently. Its range of applications include welds, pipelines, pipes, corrosion resistant alloys, corrosion mapping, HTHA inspection, detection of stepwise cracking, composite inspection, flaw imaging, and more.

Power You Can Carry

Confidence You Can See

Improved Phased Array

Innovations for Efficiency

- 3X as fast as the OmniScan MX2 flaw detector (max pulse repetition frequency)
- Single time-of-flight diffraction (TOFD) menu for accelerated workflow
- Improved fast phased array calibration lessens frustration
- 800% high amplitude range reduces the need to rescan
- Onboard Dual Linear Array™ and Dual Matrix Array™ probe support accelerates setup creation

Compatible with Existing Files and Setups

- Existing probes and scanners
- MX2/SX data files to compare new data with old and monitor changes through time
- MX/MX2/SX setups to facilitate procedure compliance

A Better OmniScan

- IP65 certified rain and dust proof
- User-replaceable cooling fan can be changed without opening up the instrument or voiding the calibration
- Onboard GPS to record the location of your data
- Connect wirelessly to the Evident Connect cloud platform to download the latest software as soon as it's available

EVIDENT

Item # R1300a

Wohler - VIS 700 Plus HD Inspection Camera

Wohler VIS 700 HD Inspection System

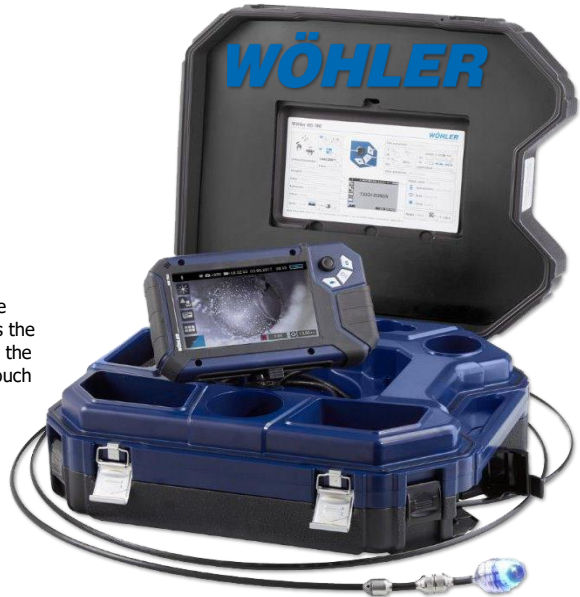
The Wohler VIS 700 inspection camera offers exactly what professionals have been waiting for: razor sharp high definition images, a focus function for precise inspection, and now wireless locating. The Wohler VIS 700 is the ideal inspection camera for waste water pipes, flue gas and ventilation lines as well as NDT and plumbing applications.

Fully Digital Camera System

A new digital high-resolution sensor assures amazingly sharp images. With the Wohler VIS 700, professionals are able to plan their maintenance services on the basis of clearly visible facts. The displayed level indication ensures you to keep orientation in the pipe. The camera display shows the camera head position and angle for ease of navigation. The home function allows you to realign the camera head straight forward when needed. HD images are displayed for you on the brilliant, touch screen high-resolution monitor.

Individual Control of Sharpness

The focus function via touch screen or joystick makes it possible to precisely control the depth of focus. A simple tip on the joystick ensures a precise, crystal clear image on the screen. Additional settings and extras, such as the touch screen keyboard, are accessible by tapping the touchscreen monitor.



HD

TOUCH
SCREEN



VOICE
RECORDING



VIDEO
FUNCTION



PHOTO
FUNCTION



HOME
FUNCTION



EASY TO
CLEAN



LOCATOR
TRANSMITTER



WIRELESS LAN
TRANSMISSION



POWER
UP TO 4h



VIS 700 APP

Mitcorp



AVIATION



POWER GEN



PETROCHEMICAL



OIL & GAS



AUTO



QUALITY

Item # R2000a

Mitcorp - X1000 6mm x 7m (All Way Articulating) Complete Portable Videoscope Kit

Key Features:

- Super Image Quality - Sharp, Clear and Bright
- 7" TFT LCD - Protected by Oil and Scratch Resistant Tempered Glass
- 1m Drop Resistance
- 800 x 480 Display Resolution
- 640 x 480 Video (with Audio)/Photo Resolution (jpeg)
- Rechargeable Li-Battery lasts for 5 Hours
- LED Backlight Function Keys: Ideal for Dark Environment operation
- Capacitive Touch Technology for Best Performance and Durability
- Neck/Hand Strap: Convenience and Great for Operation
- Light Weight: Only 2.86 lb
- IP57 Protection (Main System) - Drop and Water Proof
- Provide Flexibilities in Narrow Spaction Inspection
- 360° Articulation
- USB Reader: Simply connect your PC to Retrieve your Data from the SD Card, Card Reader is not Necessary



Temperature / Water
Resistant Layer

Stainless
Coil Layer

High Density Stainless Steel Braided Tube provides Durability, Flexibility and also Rust, Water and Temperature Resistance

POSITIVE MATERIAL IDENTIFICATION (PMI)

ThermoFisher SCIENTIFIC

Positive Material Identification is a well established analytical materials testing and materials identification technique used throughout industrial plant as well as within the metal assembly and component manufacturing industries. It guarantees a material's elemental composition as required for safety compliance and quality control.

Failures at petroleum, petrochemical and power generation facilities can have catastrophic consequences. Positive Material Identification (PMI) programmes allow plant operators and maintenance professionals to test critical process components before and after they are put in service, so they do not merely rely on the suppliers' certificates.

Item # R1400a

ThermoFisher - Niton XL2 980 Plus

Niton XL2 Plus Handheld XRF Analyzer

Confidently perform elemental analysis with the Thermo Scientific™ Niton™ XL2 Plus handheld XRF analyzer. When durability, performance and productivity are top of mind, industrial businesses rely on the Niton XL2 Plus handheld XRF analyzer for fast results and low detection limits. Identify pure metals and alloys, or obtain geochemical data, the Niton XL2 Plus provides operators the ability to scan a broad range of materials in one versatile analyzer.

Rugged and Reliable

When durability, performance and productivity are top of mind, industrial businesses rely on the Thermo Scientific Niton XL2 Plus handheld XRF analyzer. Offering superior analysis and enhanced robustness, the Niton XL2 Plus is built for the way you work. Founded on a reputation of dependability and reliability, you can count on the Niton XL2 Plus for years to come.

Purpose Built

Maximizing form and function, the Niton XL2 Plus is engineered to conquer your toughest environments. Analyze sharp items while minimizing puncture risk with standard Detector ProGuard protection. Backed by a certified IP54 rating, the Niton XL2 Plus is sealed against moisture and dust, ensuring uninterrupted operation, even in the harshest of industrial environments.



Item # R1405a

ThermoFisher - Niton XL5 Plus



ThermoFisher
SCIENTIFIC

Size and Weight

Make light work of heavy industrial tasks utilizing the Niton XL5 Plus. Weighing an industry leading 2.8 pounds, the Niton XL5 Plus is the lightest handheld XRF analyzer available for elemental determination and alloy identification. It's small footprint and featherweight design reduce operator fatigue while increasing productivity.

Small Size, Big Power

Fast, accurate, versatile XRF analysis

When versatility, low limits of detection (LODs) and high sample throughput are critical, industrial businesses rely on the Thermo Scientific Niton XL5 Plus handheld XRF analyzer. Providing customers with solutions designed to meet their most demanding applications, the Niton XL5 Plus maximizes performance and productivity.

Rapid Results

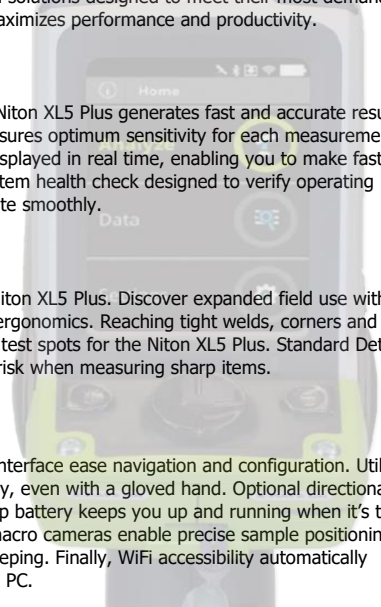
Powered by a 5W x-ray tube, the Niton XL5 Plus generates fast and accurate results. An upgraded graphene window ensures optimum sensitivity for each measurement - even light elements. Results are displayed in real time, enabling you to make faster decisions. And with a standard system health check designed to verify operating parameters, your device will operate smoothly.

Design

Tight spots are no match for the Niton XL5 Plus. Discover expanded field use with improved compact geometry and ergonomics. Reaching tight welds, corners and joints, are no longer defined as awkward test spots for the Niton XL5 Plus. Standard Detector ProGuard protection also reduces risk when measuring sharp items.

Functionality

ivid new icons and an application interface ease navigation and configuration. Utilize swipe and touchscreen functionality, even with a gloved hand. Optional directional keys provide added usability. A hot swap battery keeps you up and running when it's time to replace a low battery. Micro and macro cameras enable precise sample positioning and collect images for better record keeping. Finally, WiFi accessibility automatically transmits data from your device to PC.



POSITIVE MATERIAL IDENTIFICATION (PMI)

Item # **R1415a**

SciAps - X50 XRF Alloy Analyzer Kit

SciAps X50

Get exactly what you need with the totally reengineered X-50. It's the highest performing XRF on the market that features classic PiN diode detector technology. A little beefier than SciAps sleeker models, this XRF still offers best-in-class analytical performance and speed for its detector platform, operating at rates 2X or higher than other brands. SciAps powerful, miniaturized X-ray tube combined with highly advanced internal geometry yields fast, precise results.

Reinventing a Classic

X-50 utilizes the original "old school" PiN diode X-ray for great basic analysis of transition and heavy metals. For those who don't need to measure Mg, Al, Si, S, or P, it's the perfect choice. We've reengineered the classic detector technology with a new internal circuit board, new housing and metal components, up-to-date software and user interface, and full recalibration. And we've equipped it with more features, such as a built-in, high-resolution camera for sample viewing and a macro-camera for photo-documentation or 2D/3D bar code reading and storage.

Standard Element Package

The X-50 operates using the same advanced X-ray tube technology as other SciAps X Series models (operating at 40 kV max) for testing, that includes Ti, V, Cr, Mn, Fe, Co, Ni, Cu, Zn, W, Ta, Hf, Re, Se, Au, Pb, Bi, Zr, Mo, Pd, Ag, Cd, Sn, and Sb. More elements can be added upon request.

Data Management

Operates on Android OS with the feel of a smartphone. Using Bluetooth, Wi-Fi and USB, users can print, email, and connect to virtually any information system for real-time data. On-board macro camera allows for photo-documentation, and Bluetooth label printer provides instant hard copy labels.

SciAps



Item # **R1420a**

SciAps - Z 902+ LIBS Analyzer Kit

A new standard for NDT/PMI

The world's first handheld analyzer to deliver carbon content just got better. SciAps Z-902 Carbon is the key to rock-solid, in-field analysis for alloys. Confirm alloy type and grade 300 series stainless into L, H, and S series. Determine carbon equivalents for welding. Perform material verification pre-and post-fabrication.

Identification of stainless steels and low alloy steels, including carbon analysis down to 70 ppm and instant CE (carbon equivalence) calculations using our uniquely powerful laser, onboard argon purge and high-resolution spectrometer.

- On-board argon delivers results for pennies per test.
- Powerful laser delivers 5-6 mJ/pulse on the sample, with a 50 Hz repetition rate. High energy and high repetition rate mean a clean burn.
- Laser raster can rapid-sample multiple locations in one test for fuller data.
- Analysis averaging available for multi-shot averaging and data rejection.
- Sample alignment micro-camera and LED Spotlight focus just where you want.



SciAps

True Portability

Only 4.35 lbs with battery and a narrow profile for accessing the tightest spaces; an aerospace-grade aluminum body for improved performance in high ambient temperatures; and a re-designed, Android-based user-interface all make this system the most usable platform on the market. Wifi and Bluetooth with GPS capability to print, email, and connect to virtually any information management system for efficient, real-time test data and reporting.



MATERIAL TESTING

Item # R1500a

Fischer - FMP30 Feritscope

Item # R1510a

Fischer - DMP30 Feritscope



Measurement of the Ferrite Content in Austenitic and Duplex Steel

Sometimes, knowing the exact ferrite content is essential. Especially wherever austenitic steels and duplex steels have to withstand heat, aggressive chemicals and/or high pressure. If the ferrite content is too low, for example in the area of weld seams, this can lead to a loss in strength. On the other hand, too-high ferrite content reduces corrosion resistance, toughness and ductility. But if you check the ferrite content with the FERITSCOPE FMP30, you know for sure.

This handy instrument lets you measure the ferrite content anytime, anywhere – it's fast, precise and non-destructive. The advantages of the robust handheld device come to the fore when used in chemical plants, energy plants and process engineering plants. The wide variety of Fischer probes makes it easy for you to measure the ferrite content, even if the spot is hard to reach. Just apply the probe; the FERITSCOPE FMP30 does the rest.

Simple and Quick Measurements

It is easy to measure the ferrite content accurately when using the FERITSCOPE FMP30. Upon probe placement on the surface of the specimen, the reading is displayed automatically and stored in the instrument. The probe can also be placed onto hard to reach areas. For such applications, the instrument features an "external start" function to trigger the measurements with the push of a button. This is ideal for measurements in pipes, bore holes or grooves.

For easy ferrite content measurements along a weld seam, the instrument offers the "continuous measurement capture" function. When scanning the weld seam with the probe positioned, the continuous readings are captured and stored. This provides a ferrite content profile along the weld seam.

HARDNESS TESTING



Item # R1610a

Screening Eagle - Equotip 550 Leeb D & UCI Hardness Testing Kit



Proceq's Equotip enables portable hardness inspection of almost any object, polished parts and heat-treated surfaces. The hardness measurements are made by using the dynamic rebound testing method according to Leeb, the static Rockwell hardness test and the Ultrasonic Contact Impedance (UCI) method. The rugged Swiss-made metal NDT hardness testers are designed for portable hardness testing in the lab, in the workshop, at production facilities or on site. Equotip Live is the latest innovation featuring a wireless impact device, mobile app, real-time data sharing and cloud backup.

Equotip 550 UCI

The leading Ultrasonic Contact Impedance measurement system with advanced capabilities

- Unmatched versatility owed to HV1, HV5, and HV10 test loads in a single probe
- Patented adjustable test load for higher accuracy on a wide range of applications
- Powerful measurement device on the market packed in a rugged chassis

Applications

- Ultrasonic Inspection of Welds
- Ultrasonic Inspection of Cast and Forged Metals
- Ultrasonic Inspection of Heat-treated Surfaces

SWISS  MADE

DEMAGNETIZING

Item # R1900b

IDMAG - Pipeline Demagnetizing System - For Pipes Up to 30" in Diameter



Magnetized pipes can often result in arc blow, porosity, and various welding challenges. Many have tried different ways like changing polarity, tweaking welding leads, or manual methods to solve this issue. But often, these methods don't work well and just lead to more waiting.

Enter the IDMAG system – our definitive answer to these challenges. Not only is it the optimal tool for the task, but we also prioritize your needs by offering overnight degaussing services. With the IDMAG system, achieve seamless welding in no time.

The IDMAG System

At Industrial Degauss, we use the IDMAG System. It's designed to demagnetize your pipelines effectively. The IDMAG System is our main equipment, known for being reliable and, easy to move around.

This tool is simple to use as it comes with a tough case that keeps out water and dust and can handle being crushed. With a flexible, long-lasting cable and a digital interface, it can measure magnetic fields accurately and easily.

Weighing in at under 100 lbs., the IDMAG System can be transported anywhere. It only uses single phase 120V-250V power but can output greater demag capabilities than a 300 amp welder. This is only the beginning of what the IDMAG System can do.

Item # R1910b

IDMAG - Power Multiplier - Needed for Pipes 30" in Diameter and Greater

IDMAG Power Multiplier

For pipe diameters larger than 30" or pipes that are heavily magnetized, the Power Multiplier works with the IDMAG System to expand its capabilities. Using a second Degauss cable, it effectively doubles your demagnetizing power. This also allows work on both welds of a spool piece at the same time with one system.

The IDMAG Pipeline Demagnetizer System has more demagnetizing capability at 3000 Amp Turns than the often used welding machine (2700 AMP Turns). The Power Multiplier doubles this for a demagnetizing power of 6000 Amp Turns. In most situations, a lower current can be used which also increases duty cycle.

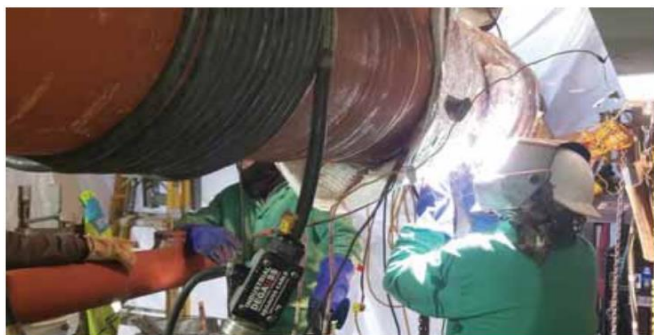
Features

IDMAG Power Box:

- Portable and Lightweight (Under 100lbs)
- Water Resistant
- Dust Resistant
- Crush Resistant (IP67 and IP54 Ratings)
- Sealed Switches
- Single and Intuitive Controls
- Single Phase, 120-240V 50/60Hz Operation

Degauss Cable:

- SOOW Industrial Cable
- Flexible and Portable
- Designed for Welding Applications
- CPE Flame-Retardant Jacket
- Rugged Connectors
- Shock and Vibration Resistant
- IP67 Protection



Whether you are replacing a steam valve in a power plant, doing a tie-in on an existing oil pipeline, or running a new mainline for natural gas, magnetic pipes can get in your way.

With our expertise and the IDMAG Pipeline Demagnetizer, we can provide the solution you need to keep moving.

INDUSTRIAL DEGAUSS

EDDY CURRENT

Item # R2500b

Evident - NORTEC 600 Eddy Current Flaw Detector with Probe Weld Kit

Thickness and Flaw Inspection Solutions

Olympus converges its latest advancements in high-performance digital circuitry and eddy current flaw detection into one compact and durable portable unit—the new NORTEC 600. With its crisp and vivid 5.7 inch VGA display and true full-screen mode, the NORTEC 600 is capable of producing highly visible and contrasting eddy current signals in any lighting condition.

The redesigned interface of the NORTEC 600 borrows the intuitive, knob-operated navigation of its NORTEC predecessors and combines it with the simple menu structure and highly efficient direct-access keys of other popular Olympus instruments. Available in four versatile models, the NORTEC 600 offers a wide range of innovative functionalities, including an Application Selection menu, an all-in-one display, real-time readings, and signal calibration in Freeze mode, ensuring that inspections are quick and easy for any level of operator.

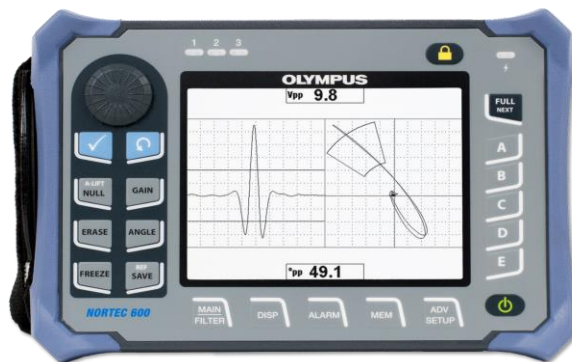
Reliable and Robust

Based on an already field-proven instrument case, the NORTEC 600 is built for endurance in harsh field conditions. Its casing's durability and resistance to extreme weather makes the NORTEC 600 an instrument you can trust for any eddy current inspection job.

Key Features:

- Designed to meet the requirements of IP66
- EN-15548 compliant
- Long battery life (up to 10 hours)
- Bright, 5.7 inch (14,5 cm) VGA display
- Full-screen option in any display mode
- Improved filters for rotary scanner mode
- Intuitive interface with Application Selection presets
- All-settings configuration page
- 10 Hz to 12 MHz frequency capacity
- Automatic internal balancing (BNC connector)
- Up to two real-time readings
- True automatic mixing
- Storage capacity of up to 500 files (program and data)
- On-board file preview

EVIDENT



Eddyfi - ECTANE3 Model ECTANE3-E128RNM1 Surface Array and Tube Inspection Test System w/ Laptop

Item # R2600a



Magnifi Software

Magnifi is the cutting-edge electromagnetic acquisition, analysis, and reporting software developed to take full advantage of the Ectane 3 capabilities. It is a constantly evolving platform boasting powerful data processing tools, multi-technologies support, easy report generation, and an intuitive graphical user interface (GUI). The Ectane 3 can be operated with Magnifi 4.8 or any more recent version of the software.

With more than a thousand units in the field, the Ectane has empowered advanced electromagnetic inspections around the world for more than a decade. The third-generation unit is IP65 certified and supports a tenth technology, Remote-Field Array (RFA) for advanced tubing.

10 Technologies in a Single Instrument:

- Eddy Current Testing (ECT)
- Eddy Current Array (ECA)
- Tangential Eddy Current Array (TECA)
- Remote-Field Testing (RFT)
- Remote-Field Array (RFA)
- Near-Field Testing (NFT)
- Near-Field Array (NFA)
- Magnetic Flux Leakage (MFL)
- Magnetic Flux Leakage Array (MFLA)
- Internal Rotating Inspection System (IRIS) Ultrasonic Testing



With a complete overhaul of the assembly, the Ectane 3 incorporates the latest electronic components available on the market in a more rugged platform than ever before. Building on the foundation laid by its predecessor for more than a decade, the IP65-certified Ectane 3 is the device you can count on to withstand even the harshest field environments.

BACK IN BLACK

CREAFORM - HandySCAN BLACK Elite with VXintegrity Software Suite and Laptop Workstation

Item # R2700a

CREAFORM



Portability

This handheld 3D scanner is a stand-alone device that does not require a tripod nor any external tracking device to operate. Fitting in a small suitcase, it can be brought anywhere and used in any environmental conditions without affecting its performance.

Lightweight

0.94 kg (2.1 lb)

Dynamic referencing

Both the object and scanner can be moved freely while scanning

Simplicity & Versatility

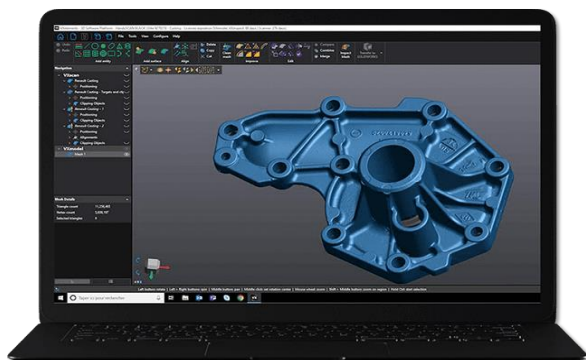
With its user-friendly interface and ergonomic design, this 3D measurement solution has a short learning curve. Highly versatile, it can be used to scan various object sizes and surface types in real time—all with the same device.

Plug and play

Simple user interface and real-time mesh visualization

Single device fits all needs

Masters complex and difficult surfaces



BLACK Series - THE TRULY PORTABLE METROLOGY-GRADE 3D SCANNERS

The HandySCAN 3D line-up is the industry standard in portable metrology-grade 3D scanners and a proven and trusted patented technology. Optimized to meet the needs of design, manufacturing and metrology professionals, the BLACK Series provides the most effective and reliable way to acquire accurate 3D measurements of physical objects anywhere.

Portable, accurate and simple to use, the HandySCAN 3D BLACK Series features unmatched speed that captures high-quality measurements. Since it performs regardless of environment changes or part movement, it represents the ideal tool for quality assurance and product development applications.

Accuracy & Resolution

The HandySCAN 3D BLACK Series delivers accurate, high-resolution and repeatable results, regardless of the measurement setup quality and no matter the user experience. Featuring dynamic referencing, both the scanner and part can move during measurement and still provide an accurate and high-quality scan.

Accuracy

0.025 mm (0.0009 in)

Volumetric Accuracy

0.020 + 0.040 mm/m (0.0008 in + 0.0005 in/ft)

Reliable Acceptance Test

Based on VDI/VDE 2634 part 3 standard ISO 17025 accredited laboratory

High resolution for fine details

High accuracy on large measurements

Integrated photogrammetry process and bundle adjustment optimisation

Integrated photogrammetry

High accuracy on large measurements with volumetric accuracy optimization

Speed

The HandySCAN 3D BLACK Series scanner features multiple laser crosses and an automatic mesh generation, enabling a faster workflow from the set-up to the scan and then to the file!

Instant mesh

Ready-to-use files

High measurement rate

Up to 1,300,000 measurements/s

11 laser crosses scanning area

Quick set-up

Up and running in less than 2 minutes

VXintegrity NDT Software Platform

Composed of four software modules designed specifically for the NDT industries, VXintegrity combines NDT knowledge and market intelligence to raise the quality of analysis and reporting to a higher level.

Pipeline

Aerospace

Surface Damage

Damage Monitoring



**"FOR ALL YOUR NDT EQUIPMENT,
SUPPLIES AND SERVICE - THINK
QUALITY"**

REPRESENTING OVER 30 MANUFACTURERS



BUFFALO, NY

3176 Abbott Road, Suite 700N
Orchard Park, NY 14127
Telephone: (716) 667-7703
sales@qeddirect.com

HOUSTON, TX

611 E Sam Houston Pkwy S
Pasadena, TX 77503
Telephone: (713) 277-7913
txsales@qeddirect.com