

DATA SHEET

Industrex M43ic NDT FILM PROCESSOR



*NDT Film Processors type:
produced by Colenta*

To be used to process all standard NDT Films.

01/2013 TK

Industrex M43ic

NDT - Filmprocessor

Technical Specifications

Processing applications: Rolls/Cut sheets of all commonly used industrial x-ray films

Film thickness: 0,10 mm (4mil) - 0,18mm (7mil)

Material width: min. 7,5 cm max. **43cm**

Material length: min. 10 cm

Capacities for:	Time in Developer [sec]	Cycle Time (dry to dry) [min]	Intake speed [cm/min]
Industrex M43ic	31	2,1	128
	184	12,6	22

additional, see the table on the next page

Tank capacity

Developer:	13,5L
Fixer:	13,3L
Wash water:	11,6L
Cooling liquid	2,5L

Solution heating (FIX and DEV): adjustable in a range of 18,0°C - 43,0°C
(separate inline 350W heaters)

Cooling system (FIX and DEV): Integrated cooling system with chiller assy and cooling pump

Dryer: warm air
adjustable in a range of 18°C - 60°C

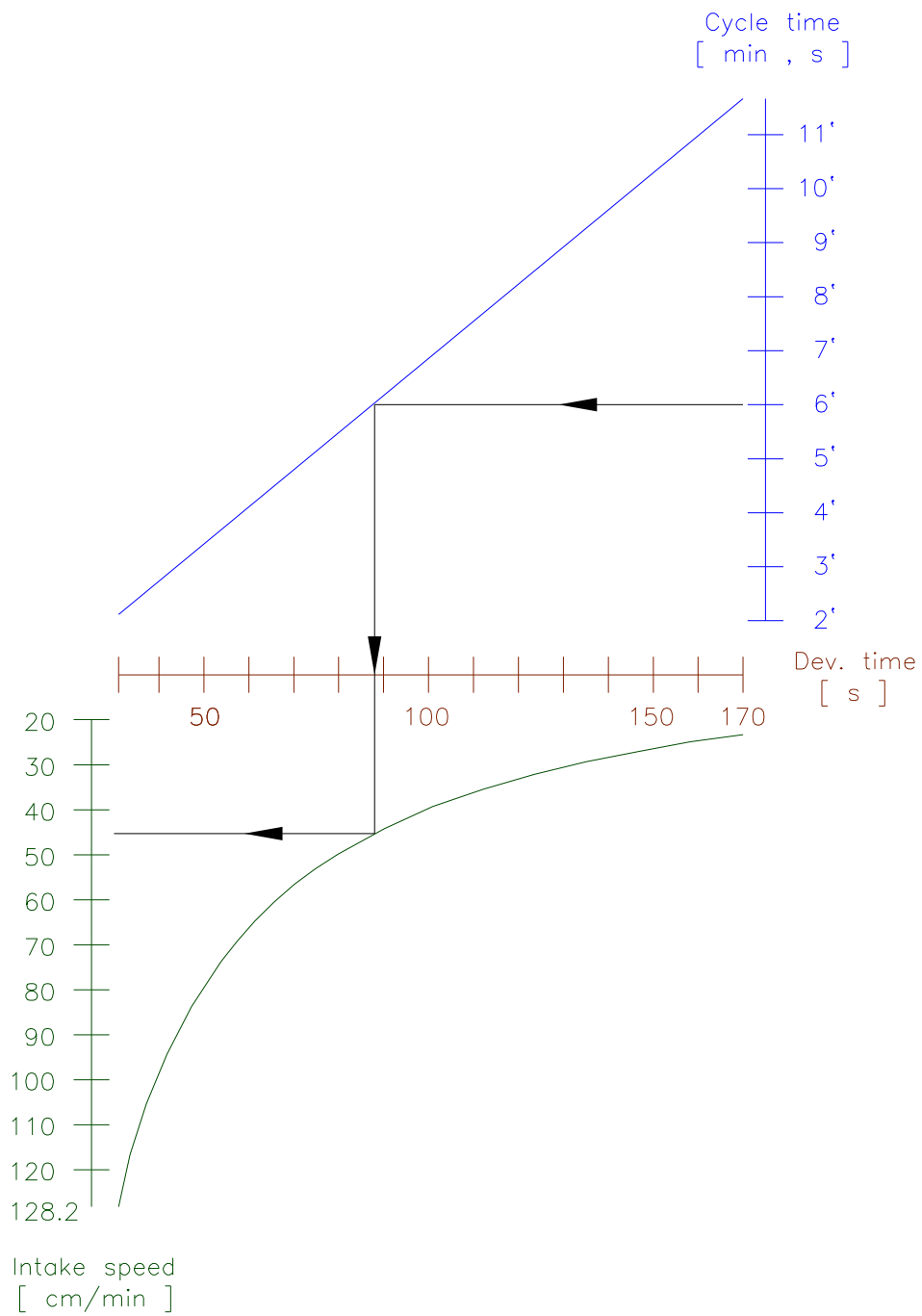
Replenishment: fully automatic
replenishment is microprocessor controlled and calculated from information received from sensors measuring the width and length of material entering the processor.
Replenishment cycles are adjustable.

Wash water distribution: built in 1-way magnetic valve
Wash water flow rate: 2,0 ltr/min when film is processed
Wash water supply pressure: 3 - 10 bar
Wash water supply: filtered at a temperature of 8°C - 15°C
with 3/4" hose connection
Wash water drain: 32mm Ø (5/4inch) hose or tube

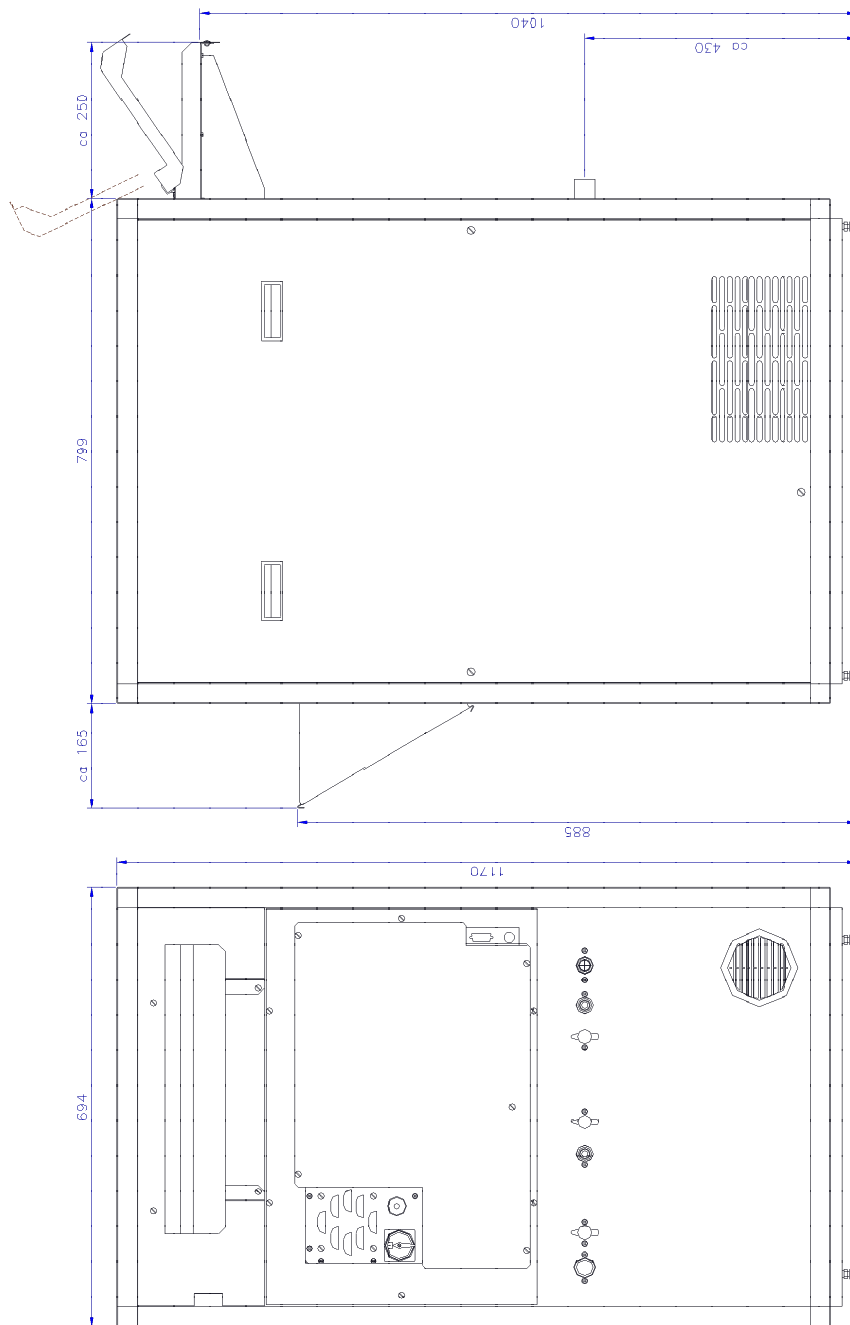
Weight:

Empty	177 kg
With solution	215 kg

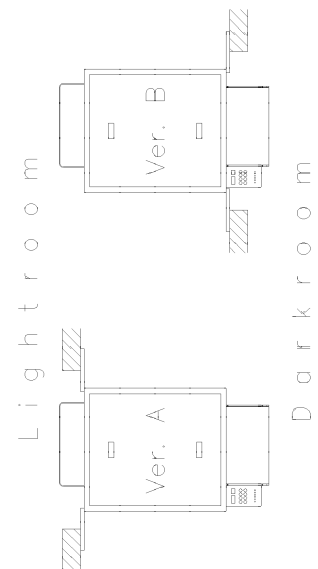
Input speed / DEV-time / Cycle-time:



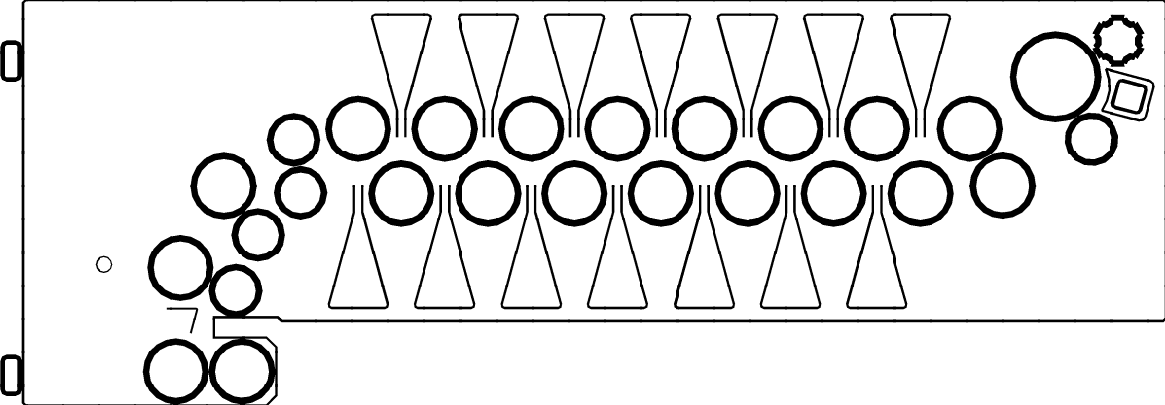
**Dimensions of Industrex M43ic NDT-Filmprocessor:
cm(inch)**



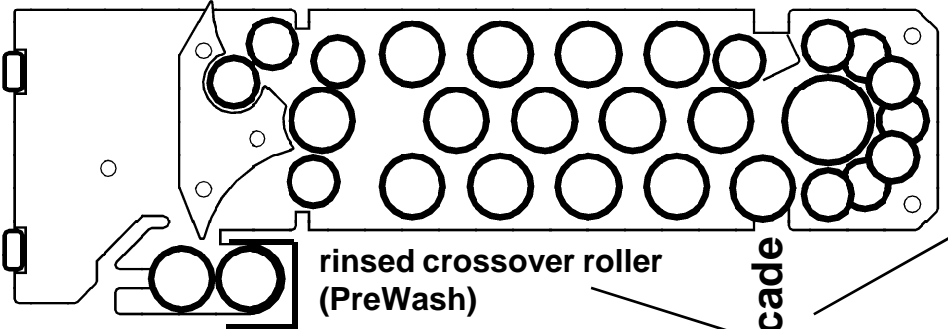
We recommend a minimum walking space of 50 cm around the processor.



Transportsystem (standard version):

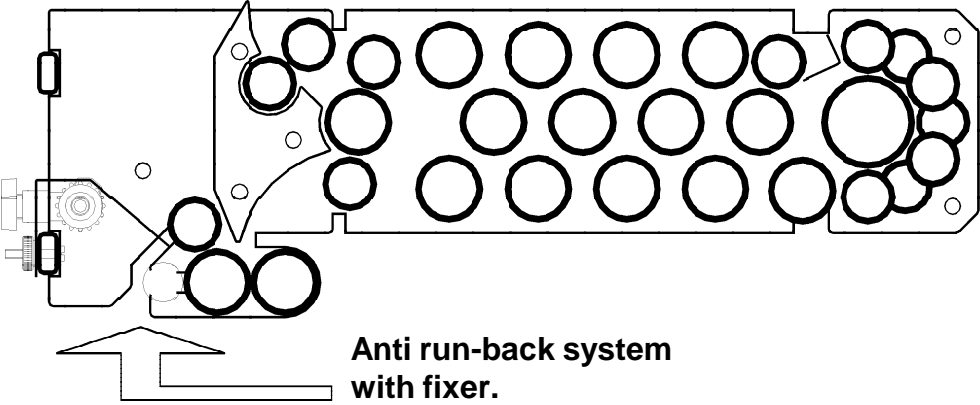


DRY

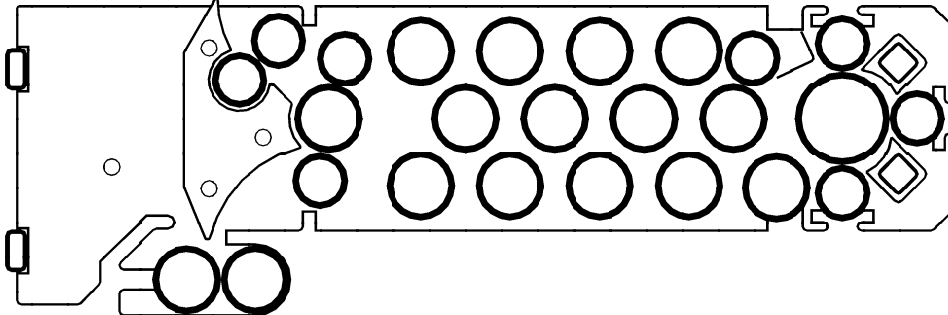


WASH
(Main-Wash)

Cascade



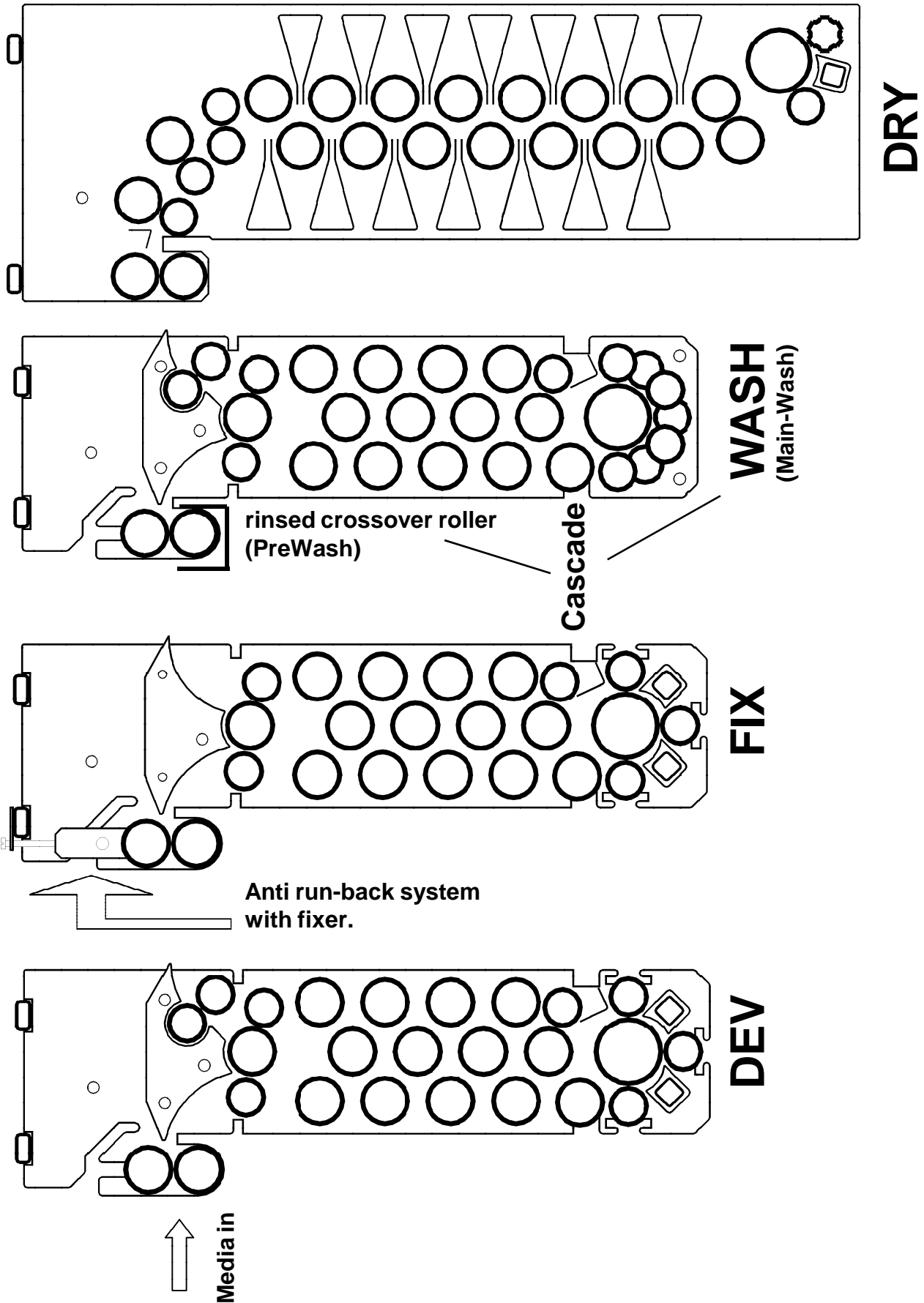
FIX



DEV

↑
Media in

Transportsystem (nuclear version):



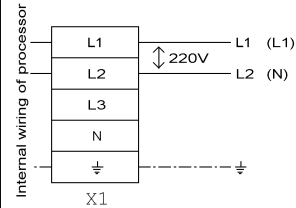
Electrical supply:

single phase
230 V AC

Industrex M43ic

3,6 kW
16 A

ATTENTION:
PROCESSOR TO BE CONNECTED TO
SUPPLY NET: 220V 50/60Hz



In case the above voltages are not available at site, please contact your local dealer or the factory for rewiring advice.

Details for shipment:

Industrex M43ic

packing dimensions: 1 wooden box on palette
120cm x 100cm x 175cm (L x W x H)
packing volume: 2,1 m³
weight with packing: 320 kg

NOTE: This equipment has been tested and found to comply with the limits for a Class A digital device, pursuant to part 15 of the FCC rules. These limits are designed to provide reasonable protection against harmful interference when the equipment is operated in a commercial environment. This equipment generates, uses and can radiate radio frequency energy and, if not installed and used in accordance with the instruction manual, may cause harmful interference to radio communications. Operation of this equipment in a residential area is likely to cause harmful interference in which case the user will be required to correct the interference at his own expense.