

NDT PRODUCTS CATALOG



RADIOGRAPHY



MAGNETIC PARTICLE



LIQUID PENETRANT



BLACKLIGHTS (UV-A)



ULTRASONIC



VISUAL



LEAK DETECTION



HARDNESS TESTING

TABLE OF CONTENTS

RADIOGRAPHY

INDUSTREX FILM & CHEMISTRY

FILM PRODUCTS.....	8
Non-Interleaved (NIF) Film	
Non-Interleaved (NIF Roll) Film Roll	
Ready Pack II	
Ready Pack Roll	
Lead Contactpak	
Lead Pack Roll	
CHEMICAL PRODUCTS.....	8
Automatic Chemicals	
Manual Chemicals	

RADIOGRAPHIC AIDS

FILM VIEWING/ MEASURING DEVICES.....	9
LED Film Viewers	
Densitometer & Density Step Tablets	
FILM MARKERS.....	10
South & QED Lead Figures	
Lead Figure Cases	
ID Printer (Film Flasher)	
1" Reference Standard	
IMAGE QUALITY INDICATORS (IQI's).....	11-12
South Plaque Type Penetrameters	
South Standard Penetrameter Shims	
Wire Type IQI's	
FILM HOLDERS.....	12-13
Hexalon (FLEX & ULTRA) Intensifying Screens	
Film Cassettes	
Cloth Cassette Material	
Backing Material	
EXPOSURE AIDS.....	13-14
Cassette Holders	
Swivel Clamps, Pipe Jigs & Source Stands	
QED Mini Beam Collimator	
Collimator Clamp	
Industrial Tapes	
Paint Markers	
FILM STORAGE.....	15-16
Interleave Paper	
Film Storage Envelopes	
70mm Film Storage Boxes (100 Count)	
70mm Film Storage Boxes (25 or 49 Count)	
100mm Film Storage Boxes (100 Count)	

RADIATION SAFETY

WARNING SIGNS & LABELS.....	17
Radiation Signs	
Barricade Rope & Reel	
Barricade Tape	
Adhesive Signs & Cones	
Transport Labels	
PERSONAL DOSIMETRY.....	18-19
Electronic Dosimeters	
Survey Meter, Rate Alarm and Pencil Type Dosimeter	
Dosimeter Chargers and Pouches	

DARKROOM

PROCESSING AIDS.....	19-20
Safelights	
WOLF Developing Hangers (Clip-Type)	
Developing Reels and Rod	
Miscellaneous Darkroom Supplies	

TABLE OF CONTENTS

MOBILE DARKROOMS.....	21-22
Lemker & Harris Darkrooms	
Miscellaneous Darkroom Products	
AUTOMATIC FILM PROCESSORS	
INDUSTREX PROCESSORS.....	23
M37 Plus Film Processor	
M43iC Film Processor	
COMPUTERIZED RADIOGRAPHY (CR)	
CARESTREAM CR SYSTEMS.....	24-25
HPX-PRO Portable Digital CR System	
HPX-1 Plus Digital CR System	
CR IMAGING PLATES.....	26
General Purpose (GP)	
High Resolution (HR)	
HR-PRO (High Resolution - Laminated)	
Imaging Plate Accessories	
DIRECT RADIOGRAPHY (DR)	
CARESTREAM DR SYSTEM.....	27
HPX-DR Non-Glass DDA Detector	
X-RAY SYSTEMS & TUBES	
GOLDEN ENGINEERING.....	28
Portable Pulsed X-Ray Generators	
COMET.....	29-30
PXS EVO Series	
Conventional X-Ray Systems	
MAGNETIC PARTICLE	
<hr/>	
MPI CONSUMABLES	
MAGNAFLUX CONSUMABLES.....	31
Wet Fluorescent Magnetic Particles	
Petroleum Base Suspension Vehicle	
Water Conditioners and Additives	
White Contrast Paint	
Wet Visible Magnetic Particles	
Dry Visible Magnetic Particles	
CIRCLE SYSTEMS CONSUMABLES.....	32-33
Wet Fluorescent Magnetic Particles	
Odorless Inspection Oil	
Water Conditioners, Additives & Wetting Agents	
Wet Fluorescent & Visible (Dual) Magnetic Particles	
Wet Visible Magnetic Particles	
Underwater Magnetic Powdered Particles	
White Contrast Paint	
Dry Visible Magnetic Particle Powder	
Dry Fluorescent & Visible (Dual) Magnetic Particle Powder	
MET-L-CHEK CONSUMABLES.....	34
Wet Fluorescent Magnetic Particles	
Petroleum Bath Vehicle	
Wet Visible Magnetic Particles	
White Contrast Paint	
Dry Visible Magnetic Particle Powder	
SHERWIN CONSUMABLES.....	35
Wet Fluorescent Magnetic Particles	
Contrast Paint	
Wet Visible Magnetic Particles	
Magnetic Particle Fluid	
MPI CONSUMABLE AIDS	
MATERIAL ACCESSORIES.....	36
Applicators & Centrifuge Tubes	

TABLE OF CONTENTS

YOKES

PARKER RESEARCH/ MAGNAFLUX YOKES.....	36
YOKE ACCESSORIES.....	36

MAGNETIC PARTICLE AIDS

FIELD INDICATORS.....	37
QUANTITATIVE QUALITY INDICATORS (QQIs).....	37
TEST PIECES.....	37

MPI EQUIPMENT & ACCESSORIES

PORTABLE COIL.....	37
Parker Portable Coil	
PORTABLE & MOBILE POWER PACKS.....	38
Magnaflux P-70	
Magnaflux P-1500	
Magnaflux M-Series	
MAGNAFLUX WET BENCH.....	39
A-Series	
AD-Series	
D-Series	
MD-Series	
Universal WE	
EQUIPMENT ACCESSORIES.....	40
4/0 Cables & Connectors	
Prods & Clamps	
Copper Contact Pads & Conductors	
Lead Contact Pads	
Equipment Adapters	

LIQUID PENETRANT

LPI CONSUMABLES

MAGNAFLUX CONSUMABLES.....	41-42
ZYGLO - Fluorescent (Methods A & C)	
ZYGLO - Fluorescent (Methods B, C & D)	
ZYGLO - Fluorescent Water-Based (Method A)	
SPOTCHECK - Visible (Methods A & C)	
SPOTCHECK - Visible Water-Based (Methods A & C)	
Remover & Emulsifiers	
Developer	
MET-L-CHEK CONSUMABLES.....	43-44
FP Series - Fluorescent (Methods A & C)	
FP Series - Fluorescent (Methods B, C & D)	
VP Series - Visible (Methods A, B & C)	
VP Series - Visible Bio Degradable (Methods A & C)	
VP Series - Visible High Temperature (Method C)	
Emulsifiers	
Cleaners & Removers	
Developer	
SHERWIN CONSUMABLES.....	45-46
HM Series - Fluorescent (Methods A & C)	
RC Series - Fluorescent (Methods B, C & D)	
DP & KO Series - Visible (Methods A & C)	
Removers/Cleaners	
Emulsifiers	
Developer	

LPI ACCESSORIES

MATERIAL ACCESSORIES.....	47
LPI Applicators & Sprayers	
Monitoring Devices & Wiping Cloths	
TAM PANEL & CLEANING UNIT.....	47
Hoffman Precision Star TAM Panels	
Ultrasonic Cleaning Unit & Solution	

TABLE OF CONTENTS

ADDITIONAL LPI PANELS/BLOCKS	48
NiCr Twin Cracked Test Panels	
Additional LPI Test Panels & Blocks	
LPI MEASURING AIDS	48
Crack Comparators	

BLACKLIGHTS

HANDHELD LED UV-A LAMPS

MAGNAFLUX HANDHELD	49
EV6000 Inspection Lamp	
SPECTRO-UV HANDHELD	49
UVISION 365 Series Inspection Lamps	
LABINO HANDHELD	49-50
MB 3.0 Series Inspection Lamps	
HERCULES Ex Inspection Lamp	
BB 2.0 Series Inspection Lamps	

FLASHLIGHT LED UV-A LAMP

SPECTRO-UV FLASHLIGHT	51
CLARITY 365 Series Kit	
LABINO FLASHLIGHT / HEADLIGHT	51
UVG3 2.0 Series Inspection Flashlights	
UVG5 2.0 Series Inspection Headlight	

OVERHEAD LED UV-A LAMPS

LABINO OVERHEAD	52
GX ORION Series Modular Overhead UV System	

LIGHT METERS

LABINO, SPECTRO-UV & ECONOMICAL LIGHT METERS	52
---	-----------

ULTRASONIC

CALIBRATION BLOCKS

REFERENCE STANDARDS	53
----------------------------------	-----------

ULTRASONIC COUPLANT

GENERAL PURPOSE	54
HIGH TEMPERATURE	54
COUPLANT ACCESSORIES	54

INSPECTION POINT SEALS

INSPECTION PLUGS	55
INSPECTION LABELS	55
MANDREL AND HOLE SAWS	55

UT EQUIPMENT

THICKNESS GAUGES	56-58
EHC-09 "Monochrome" Series Thickness Gauges	
Danatronics ECHO Thickness Gauges	
DAKOTA ZX Series Thickness Gauges	
FLAW DETECTORS	58
DAKOTA & SONATEST	
TRANSDUCERS AND WEDGES	58
SENSOR NETWORKS, DAKOTA, Danatronics, Olympus, SONATEST & Technisonic	
CABLES	59

VISUAL

MEASURING DEVICES

WELDING GAUGES	59
-----------------------------	-----------

VIDEO INSPECTION SYSTEM

WOHLER VIS 700 HD Inspection System & Accessories	59
--	-----------

TABLE OF CONTENTS

LEAK DETECTION

VACUUM BOX TESTING

VACUUM BOXES, ACCESSORIES & SOLUTION.....	60
---	----

HARDNESS TESTING

TELEWELD

BRINELL HARDNESS TESTING.....	60
-------------------------------	----

PHASE II

PORTABLE HARDNESS TESTER.....	60
-------------------------------	----

FLAWED TEST SPECIMENS

FLAWTECH

STANDARD SPECIMEN KITS.....	61
PRACTICAL EXAM SPECIMENS.....	61
UT THICKNESS SPECIMENS.....	61

SERVICE

EQUIPMENT EVALUATION & REPAIR

WHAT WE REPAIR.....	62
---------------------	----

EQUIPMENT CALIBRATION/CERTIFICATION

RADIOGRAPHY.....	62
BLACKLIGHTS & LIGHT METERS.....	62
MAGNETIC PARTICLE.....	62
ULTRASONIC & HARDNESS TESTERS.....	62

SPECIAL SERVICES

LED FILM VIEWER MODIFICATION.....	63
-----------------------------------	----

PREVENTATIVE MAINTENANCE (PM)

FILM PROCESSORS.....	63
----------------------	----

FIELD SERVICE

CALL-OUT RATES.....	63
---------------------	----

**Can't find
what you are
looking for?**



****Please Contact one of our Distribution
Centers for Further Assistance****

DISTRIBUTION CENTERS

BUFFALO, NY

Quality Equipment Distributors, Inc.
3176 Abbott Rd. Suite 700N
Orchard Park, NY 14127

Telephone: (716) 667-7703
Fax: (716) 667-7702
Email: sales@qeddirect.com

Outside Sales Representative

James Sisson
Cell: (716) 994-0630
Email: jsisson@qeddirect.com

HOUSTON, TX

Quality Equipment Distributors, Inc.
4044 Strawberry Road
Pasadena, TX 77504

Telephone: (713) 277-7913
Fax: (713) 588-1804
Email: txsales@qeddirect.com

Outside Sales Representative

CW Collier
Cell: (281) 299-2438
Email: cwcollier@qeddirect.com

QUALITY



"As a business, Quality Equipment Distributors (QED) is committed to excellence by providing superior customer service and support through the sale of QUALITY products to the Non-Destructive Testing industry. This commitment is rooted in the ongoing effort to involve our employees and partner with our suppliers; to continually improve our processes to meet the needs and requirements of our customers."

Certificate is Available for Download on our Website

RETURN POLICY

Products may only be returned with QED's authorization and must be in good working condition, with complete identification, shipped freight prepaid and returned to the Distribution Center from which they were shipped or picked up. The price on the original invoice will be the basis for credit for any authorized return. QED may impose a 25% restocking fee as a condition of accepting a return. Custom-built products may not be returned.

Prior to returning any Product, Customer must first obtain a Return Material Authorization (RMA) from QED and include that RMA number on the packing slip for returned Product. Product must be returned within 30 days after the RMA is issued. QED may refuse to accept the return of Products for which Customer has not provided an RMA number or for which the RMA number was issued more than 30 days prior to the return.

Except where Products are defective, returns must be in clean, unopened, factory packaging, in unmarked condition. In the case of cardboard box packaging, the seal must not be broken.

Returned Product must include all items originally packaged with or accompanying Products. In all instances, when returning Products, original paperwork, with invoice/receipt information must be supplied with return.

QED reserves the right to inspect and require proof of the defect prior to accepting returns.

RADIOGRAPHY INDUSTREX FILM & CHEMISTRY

Carestream[®]NDT



FILM PRODUCTS

Get the T-Grain Emulsion Advantages

T-GRAIN Emulsion offers a state-of-the-art technology that's specifically designed for industrial radiographic testing applications. What does that mean for you?

Outstanding Image Quality

With a cold, clean image tone and low noise, you get a sharp, clear image every time.

Convenient Processing Flexibility

The films work well in standard process cycles—but they're just as effective in longer or shorter process cycles.

Superb Durability

The films are static resistant, more heat resistant than conventional systems, incredibly sturdy, and you'll get fewer artifacts from handling.

Non-Interleaved Film (NIF)

100 Sheets/Box

Size	AA400	T200	MX125	M100	DR50	HS800
3.5" x 8.5"	-	6095772	6046916	5291406	-	-
3.5" x 10"	6046908	5284856	6041552	6041560	6041578	-
3.5" x 17"	1030295	8497711	5087283	6041354	6046619	-
4.5" x 10"	8139503	8385213	5087259	5282611	6041701	-
4.5" x 17"	1447234	8328494	5087275	5258538	6041719	-
5" x 7"	1543628	1921683	5245261	5258553	-	-
7" x 17"	1447655	8280745	5235890	5258504	6045090	-
8" x 10"	1447853	1490606	5245287	5282629	6045082	-
10" x 12"	6095988	6096002	6095970	6095962	6046635	-
11" x 14"	6095996	6095863	6095848	6095855	6046601	-
14" x 17"	6549471	6549463	6549455	8365728	6095533	6095558

Non-Interleaved Film Roll (NIF Roll)

Size	AA400	T200	MX125	M100	HS800
70mm x 492'	5230263	5073465	5058961	5268396	5291687
70mm x 1,000'	6043475	6043392	6043426	-	-
90mm x 492'	5265459	5291992	5262795	8618480	-



Ready Pack II

50 Sheets/Box

Size	AA400	MX125	M100
3.5" x 17"	-	5289434	-
4.5" x 17"	-	5245154	-
5" x 7"	-	5238118	-
7" x 17"	8040552	5245147	-
8" x 10"	8278137	5245139	-
14" x 17"	8460636	5238134	5272844



Ready Pack Roll

Size	AA400	MX125	M100
60mm x 90m	-	6046882	-
70mm x 90m	-	6046874	6046890
5" x 60m	-	5245220	-
14" x 60m	5073523	5245188	-

Lead Contactpak

50 Sheets/Box

Size	AA400	T200	MX125	M100
4.5" x 10"	-	-	5245253	-
4.5" x 17"	5073507	6044978	6046940	5281241
5" x 7"	-	-	5241161	5259106
14" x 17"	5057740	-	5053749	-

Lead Pack Roll

Size	AA400	T200	MX125	M100
60mm x 90m	6046718	6046783	6046759	-
70mm x 90m	6046726	6046791	6046767	6046734
10mm x 90m	6046700	6046775	6046742	-

CHEMICAL PRODUCTS

INDUSTREX Chemicals for manual and automatic processing support the evolving requirements of the non-destructive testing market. Our experience in imaging science spans over one hundred years. But it's an unbreakable commitment to product innovation and customer service that has allowed the INDUSTREX line of products to achieve superiority in the NDT industry.

INDUSTREX Chemicals for use with Automatic Processors

Item No.	Description	Replenishment Rates (m ²)	Pack/Size	Makes
8351413	Single Part Developer Starter	N/A	Bottle (39.8 oz)	10 Gallons
5315288	Single Part Developer Replenisher	665 mL	Case (2 x 5L)	10 Gallons
5327903	Single Part Developer Replenisher	665 mL	Drum (55 Gallon)	200 Gallons
5159082	LO Fixer and Replenisher	1200 mL	Case (2 x 5L)	10 Gallons
5327895	LO Fixer and Replenisher	1200 mL	Drum (55 Gallon)	200 Gallons



INDUSTREX Chemicals for use with Manual Processing

Item No.	Description	Replenishment Rates (m ²)	Pack/Size	Makes
5320635	Manual Developer	665 mL	Case (2 x 5L)	10 Gallons
1054873	Manual Stop Bath	N/A	Bottle (1L)	5 Gallons
5320643	Manual Fixer	1200 mL	Case (2 x 5L)	10 Gallons
1057025	Manual Rinse Solution	N/A	Bottle (1L)	5 Gallons

RADIOGRAPHIC AIDS FILM VIEWING/ MEASURING DEVICES

LED Film Viewers



Viewer pictured above has undergone Anti-Corrosion Treatment. See Service Section for More Information

- ▶ QED Viewer Kits Include: Rugged Aluminum Carrying Case with LED Film Viewer, Foot Pedal, Operation Guide and Test Report
- ▶ LCNDT Viewer Kits Include: LED Film Viewer, External Mask, Foot Pedal, Manual, Test Report, Warranty Card and Carrying Bag depending on Model

Brand	Model	Viewing Window	Intensity	Max Viewing Density
QED	A2	2.5" x 8"	110,000 Cd/m sq	4.1 D
	A8L	3.14" x 15.7"		
LCNDT	FV-2009 Plus <i>FV-2009T</i>	2.5" x 8"	120,000 Cd/m sq	4.1 D
	FV-2010 Plus <i>FV-2010T Plus</i>	4" x 15.8"	130,000 Cd/m sq	4.2 D
	FV-2018 Iris	0.2" thru 4"	300,000 Cd/m sq	4.5 D
	FV-2014	13" x 16.1"	82,800 Cd/m sq	3.8 D

LCNDT Film Viewer Models ending in "T" include a Built-in Densitometer



A2



A8L



FV-2009 PLUS



FV-2010 PLUS



FV-2018 IRIS



FV-2014

Densitometer & Density Step Tablets

Brand	Item or Model	Measuring/ Tablet Range	Description
Eseco Speedmaster	5009	0.00 - 5.00 D	SM-10 Portable B/W Transmission Densitometer
	5012	0.00 - 4.00 D	SM-12 Compact Densitometer (Built-in Light Source, Limited to a 3" Film Measuring Depth)
	5014	0.00 - 4.00 D	SM-14 Compact Densitometer (Reads Directly from Film Viewers)
	5099	.08 - 4.00 D	4 Step Transmission Density Tablet (Uncertified)
	5005	.08 - 4.00 D	5 Step Transmission Density Tablet (NIST Certified)
	5004	.15 - 5.00 D	21 Step Transmission Density Tablet (NIST Certified)
LCNDT	DT-300	0.00 - 5.00 D	LCNDT Tabletop Densitometer (Replacement for X-Rite 301)
	DT-100	0.00 - 5.00 D	LCNDT Portable Densitometer

LCNDT Densitometers do not include a Transmission Density Tablet

ESECO Speedmaster®



5009



5004



5012



5014



5005

LCNDT



DT-300



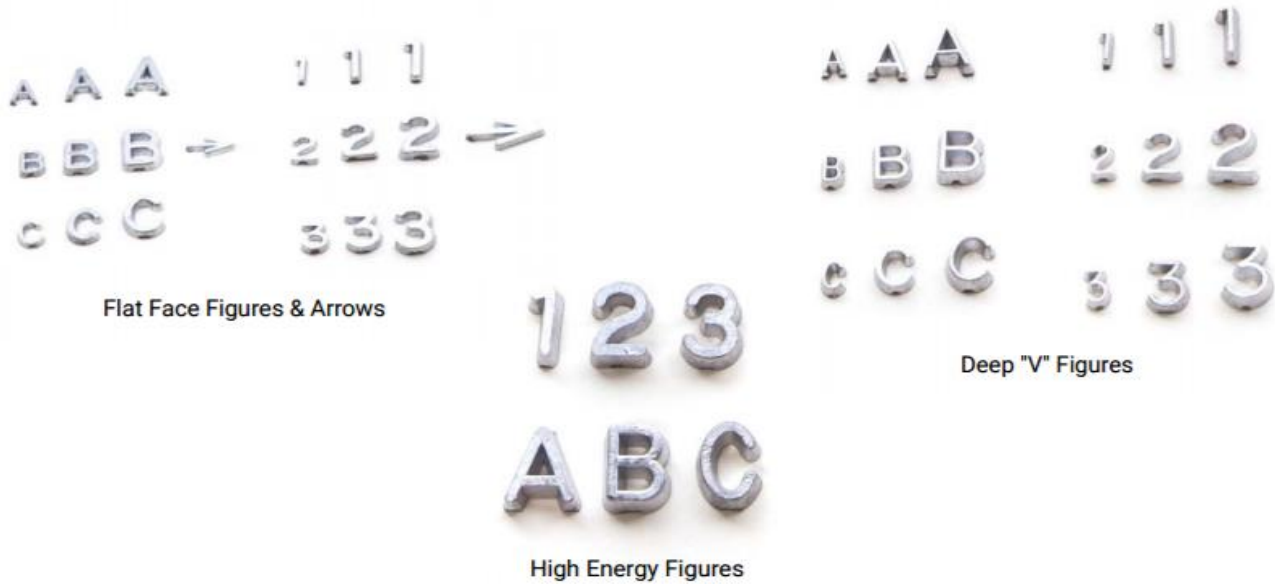
DT-100

FILM MARKERS

South & QED Lead Figures

Our manufacturing process makes a clean, sharp-edged character, free of flash and porosity. All numbers and letters are pre-packed and sold in quantities as follows:

Item	Style	Quantity
1/4" Lead Figures	Deep "V" (South) Flat Face (QED)	Pack of 100
3/8" Lead Figures	Deep "V" (South) Flat Face (South)	Pack of 50 Pack of 100
1/2" Lead Figures	Deep "V" (South) Flat Face (South)	Pack of 50 Pack of 100
3/4" Lead Figures	High Energy (South)	Each



Lead Figure Cases

Designed to hold both numbers and letters. These lead number cases are made of ABS high impact plastic and contain a polyethylene sponge inside the cover which prevents accidental mixing of numbers and letters when the cover is closed.

Item	Color	Number of Compartments
LL-CASE	Red	38

ID Printer (Film Flasher)

Item	Description
17104	WOLF Manual ID Printer

1" Reference Standard

Like magic... 1" reference ball attaches itself to any ferromagnetic material, making a radiographer's life just a little easier. The ball can be used as a reference for measuring pipe wall.

For accurate measurement, the ball must be put as near as possible to the exact side of the pipe parallel to the image media so that the enlargement of the pipe wall is the same as that of the ball.

If the comparator or ball is not touching the pipe because of insulation, aim the source at the center of the space between the two. This will help insure an equal amount of enlargement to the ball and the pipe wall. (Think of how the source side of an elliptical 2" weld is distorted more than the film side).

Item	Description
SP*001201	1" OD Magnetic Reference Ball (Includes Certificate of Conformance)
SP*001218	1" OD Non-Magnetic Reference Ball (Includes Certificate of Conformance)

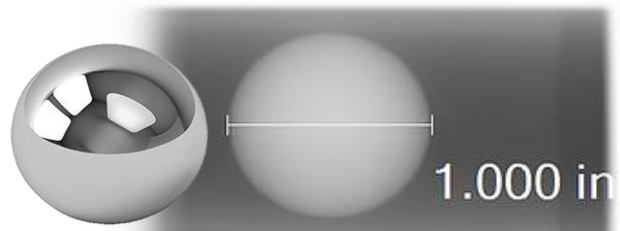


IMAGE QUALITY INDICATORS (IQI's)

South Plaque Type Penetrameters

SOUTH precision IQI's rigidly conform to and exceed requirements of each code. Lead figures identifying the IQI size are affixed to the IQI and each IQI is chemically etched identifying the specification. All IQI's are accompanied by a certificate of conformity and are traceable to the National Institute of Standards and Technology (NIST).



Item	Material Group	Material	Sizes
ASTM E1025 (E142)	1	Stainless Steel	#5, #7, #10, #12, #15, #17 and #20 #25, #30, #35, #40, #45 and #50
	2	Aluminum	#5, #7, #10, #12, #15, #17 and #20 #25, #30, #35, #40, #45 and #50
ASME Section V	1	Carbon Steel	#60, #70 and #80 #90, #100, #110, #120, #130, #140 and #160 #180 and #200

***API 1104 Specifies the use of IQI's Conforming to Requirements of ASTM E747 for Wire Type IQI's**
***Additional Codes, Sizes and Material Groups are available upon request**

IQI SELECTION

All ASME sections reference ASME Section V SE 1025 (identical to ASTM E1025). IQI selection for use is determined using Table T-276 as shown below:

Nominal Single-Wall Material Thickness Range, in. (mm)	IQI					
	Source Side			Film Side		
	Hole-Type Designation	Essential Hole	Wire-Type Essential Wire	Hole-Type Designation	Essential Hole	Wire-Type Essential Wire
Up to 0.25, incl. (6.4)	12	2T	5	10	2T	4
Over 0.25 through 0.375 (6.4 through 9.5)	15	2T	6	12	2T	5
Over 0.375 through 0.50 (9.5 through 12.7)	17	2T	7	15	2T	6
Over 0.50 through 0.75 (12.7 through 19.0)	20	2T	8	17	2T	7
Over 0.75 through 1.00 (19.0 through 25.4)	25	2T	9	20	2T	8
Over 1.00 through 1.50 (25.4 through 38.1)	30	2T	10	25	2T	9
Over 1.50 through 2.00 (38.1 through 50.8)	35	2T	11	30	2T	10
Over 2.00 through 2.50 (50.8 through 63.5)	40	2T	12	35	2T	11
Over 2.50 through 4.00 (63.5 through 101.6)	50	2T	13	40	2T	12
Over 4.00 through 6.00 (101.6 through 152.4)	60	2T	14	50	2T	13
Over 6.00 through 8.00 (152.4 through 203.2)	80	2T	16	60	2T	14
Over 8.00 through 10.00 (203.2 through 254.0)	100	2T	17	80	2T	16
Over 10.00 through 12.00 (254.0 through 304.8)	120	2T	18	100	2T	17
Over 12.00 through 16.00 (304.8 through 406.4)	160	2T	20	120	2T	18
Over 16.00 through 20.00 (406.4 through 508.0)	200	2T	21	160	2T	20

South Standard Penetrameter Shims

Some codes require that shims be placed under the IQI to compensate for the thickness of a backing ring or weld reinforcement. Shims are supplied in the same materials as IQI's. They are usually available in increments of 1/16", from 1/16" thick thru 1.0". The general dimension (3/4" W x 1 3/4" L) allows approximately 1/8" clearance on each side of the IQI they are to be used with.

Item	Image	Description
S-1/64-CS-SHIM		SOUTH 1/64" Carbon Steel Standard Penetrameter Shim (3/4" W x 1 3/4" L)
S-1/32-CS-SHIM		SOUTH 1/32" Carbon Steel Standard Penetrameter Shim (3/4" W x 1 3/4" L)
S-1/16-CS-SHIM		SOUTH 1/16" Carbon Steel Standard Penetrameter Shim (3/4" W x 1 3/4" L)
S-1/8-CS-SHIM		SOUTH 1/8" Carbon Steel Standard Penetrameter Shim (3/4" W x 1 3/4" L)
S-3/16-CS-SHIM		SOUTH 3/16" Carbon Steel Standard Penetrameter Shim (3/4" W x 1 3/4" L)
S-1/4-CS-SHIM		SOUTH 1/4" Carbon Steel Standard Penetrameter Shim (3/4" W x 1 3/4" L)
S-3/8-CS-SHIM		SOUTH 3/8" Carbon Steel Standard Penetrameter Shim (3/4" W x 1 3/4" L)
S-1/2-CS-SHIM		SOUTH 1/2" Carbon Steel Standard Penetrameter Shim (3/4" W x 1 3/4" L)
S-1-CS-SHIM		SOUTH 1.0" Carbon Steel Standard Penetrameter Shim (3/4" W x 1 3/4" L)

Item	Image	Description
S-1/64-SS-SHIM		SOUTH 1/64" Stainless Steel Standard Penetrameter Shim (3/4" W x 1 3/4" L)
S-1/32-SS-SHIM		SOUTH 1/32" Stainless Steel Standard Penetrameter Shim (3/4" W x 1 3/4" L)
S-1/16-SS-SHIM		SOUTH 1/16" Stainless Steel Standard Penetrameter Shim (3/4" W x 1 3/4" L)
S-1/8-SS-SHIM		SOUTH 1/8" Stainless Steel Standard Penetrameter Shim (3/4" W x 1 3/4" L)
S-3/16-SS-SHIM		SOUTH 3/16" Stainless Steel Standard Penetrameter Shim (3/4" W x 1 3/4" L)
S-1/4-SS-SHIM		SOUTH 1/4" Stainless Steel Standard Penetrameter Shim (3/4" W x 1 3/4" L)
S-3/8-SS-SHIM		SOUTH 3/8" Stainless Steel Standard Penetrameter Shim (3/4" W x 1 3/4" L)
S-1/2-SS-SHIM		SOUTH 1/2" Stainless Steel Standard Penetrameter Shim (3/4" W x 1 3/4" L)
S-1-SS-SHIM		SOUTH 1.0" Stainless Steel Standard Penetrameter Shim (3/4" W x 1 3/4" L)

***Additional Sizes and Materials are available upon request**

Wire Type IQI's

The only IQI acceptable by API 1104 (20th Edition) and accepted as an alternative to plaque type IQI's by ASME Section V and AWS, these Wire Type IQI's are encapsulated in vinyl for durability. Available in 4 sizes (Sets A, B, C and D) and inspected with instruments calibrated and traceable to the National Institute of Standards and Technology (NIST).

ASTM E747 Wire Type IQI's are manufactured with 6 wires in each size, as shown in Table 1. Each size IQI covers a range of thicknesses for which it is used, based on a standard 2T level of inspection.

IQI SIZE	THICKNESS RANGE
Set A	.25" thru .75"
Set B	.75" thru 1.7"
Set C	1.7" thru 4.0"
Set D	4.0" thru 10.0"



TABLE 1 Wire IQI Sizes and Wire Identity Numbers

SET A		SET B	
Wire Diameter in. (mm)	Wire Identity	Wire Diameter in. (mm)	Wire Identity
0.0032 (0.08) ^A	1	0.010 (0.25)	6
0.004 (0.1)	2	0.013 (0.33)	7
0.005 (0.13)	3	0.016 (0.4)	8
0.0063 (0.16)	4	0.020 (0.51)	9
0.008 (0.2)	5	0.025 (0.64)	10
0.010 (0.25)	6	0.032 (0.81)	11
SET C		SET D	
Wire Diameter in. (mm)	Wire Identity	Wire Diameter in. (mm)	Wire Identity
0.032 (0.81)	11	0.10 (2.5)	16
0.040 (1.02)	12	0.126 (3.2)	17
0.050 (1.27)	13	0.160 (4.06)	18
0.063 (1.6)	14	0.20 (5.1)	19
0.080 (2.03)	15	0.25 (6.4)	20
0.100 (2.5)	16	0.32 (8)	21



Item	Size	Wire Length	Material Group
ASTM E747	Set A	2"	1 (Stainless Steel)
		3"	2 (Aluminum)
	Set B	2"	1 (Stainless Steel)
		3"	2 (Aluminum)
	Set C	2"	1 (Stainless Steel)
		3"	2 (Aluminum)
		4"	1 (Stainless Steel)
	Set D	4"	1 (Stainless Steel)

**Additional lengths and Material Groups are available upon request*

FILM HOLDERS

Hexalon (FLEX & ULTRA) Intensifying Screens

Hexalon is the popular industry standard lead intensifying screen when performing radiographic testing. The FLEX screen includes a proprietary fiber 90 backing for greater flex and durability. The ULTRA screen is the best production screen available and offers the greatest flexibility and resistance to crimping than any other screen on the market.

Item	Size	Thickness	
FLEX 	70mm X 10"	.005"	
	70mm X 17"	.010"	
	70mm X 17"	.005"	
	70mm X 17"	.010"	
	3.5" X 10"	.005"	
	3.5" X 17"	.010"	
	3.5" X 17"	.005"	
	3.5" X 17"	.010"	
	4.5" X 10"	.005"	
	4.5" X 17"	.010"	
ULTRA 	5" X 7"	.005"	
	5" X 7"	.010"	
	6" x 10"	.005"	
	6" x 10"	.010"	
	6" x 17"	.005"	
	6" x 17"	.010"	
	7" X 17"	.005"	
	7" X 17"	.010"	
	8" X 10"	.005"	
	8" X 10"	.010"	
	10" X 12"	.005"	
	10" X 12"	.010"	
	11" X 14"	.005"	
	11" X 14"	.010"	
	14" X 17"	.005"	
	14" X 17"	.010"	
	2.75" (approx. 70mm wide)	300'	.005"
	2.75" (approx. 70mm wide)	180'	.010"
	3.5" (approx. 90mm wide)	300'	.005"
	3.5" (approx. 90mm wide)	180'	.010"
4.5" (approx. 115mm wide)	300'	.005"	
	180'	.010"	
17" (approx. 432mm wide)	95'	.005"	
	54'	.010"	

**Cut Screens come standard with 1/2" radius cut corners*

Film Cassettes

► **SOUTH** - This completely flexible film holder (cassette) is easily molded around irregular shapes to ensure proper contact necessary in direct exposure technique. Made from vinyl treated paper with all edges reinforced with tape for durability, this rugged cassette is available in various sizes. Black Only.

► **CLOTH** - Tough, water resistant, and highly durable. Our cloth cassettes are made with the seam in the center, on the back cassette. One end of the cassettes is sealed with gaffers tape and the other includes a rubber band for easy opening and closing of the cassette.

**Custom Sizes are Available Upon Request*

► **WARREN** - "Flexible" Type Film Holders: Outer Cover made of tough vinyl impregnated fiber stock but flexible enough to contour around shapes. Comes in two colors (specify when ordering) Blue or Black. Inner film envelope made of black shoe material for light tight protection.

**Also Available Upon Request - WARREN - "Semi-Rigid" or "Rigid" Film Holders. Ideal for Heavy Castings*

Item	Size	SOUTH	CLOTH	WARREN
FILM CASSETTES	70mm X 10"	X	X	X
	70mm X 17"	X	X	X
	3.5" X 10"	X	X	X
	3.5" X 17"	X	X	X
	4.5" X 10"	X	X	X
	4.5" X 17"	X	X	X
	5" X 7"	X	N/A	X
	6" x 10"	X		X
	6" x 17"	X		X
	7" X 17"	X		X
	8" X 10"	X		X
	10" X 12"	X		X
	11" X 14"	X		X
14" X 17"	X	X	X	

Cloth Cassette Material

This product is constructed by bonding a sheet of neoprene rubber between two high grade duct cloths of the finest quality durable fabrics. The combination of our dual chain stitch construction and the rugged light-proof material makes a product that has proven reliable for many years.

Item	Size
BELTING	70mm x 1'
	3.5" x 1'
	4.5" x 1'

Backing Material

Our .050" and .062" nylon backing is available in rolls, or cut to specified lengths with corners radiused. This flexible material will not buckle or deteriorate under normal use. Therefore, it can be used as support in new cassettes many times.

Item	Size	Thickness
BACKING	70 mm x 1'	.050"
		.062"
	3.5" x 1'	.050"
		.062"
	4.5" x 1'	.050"
		.062"



SOUTH MFG.



CLOTH



WARREN



BACKING MATERIAL

EXPOSURE AIDS

Cassette Holders

Item	Description
SP*001312	Nylon RT Clamp with Rubber Molded Tips, 9 1/2" Length x 5" Opening
SP*001002	Magnetic Film Holders are made of a spring steel arc with a forty (40) lb. pull magnet attached through center of arc. Quick release mechanism allows the cassette to be changed without removing magnet from vessel. Holder end of spring steel is equipped with lead rubber to prevent back scattering exposure of the cassette
PM	Paddle magnets are made of a high-impact plastic with a circular ring magnet at one end and a 3" x 4" flap at the other end
SP*001085	1/4" Black Bungee Cord, 100' Roll



Swivel Clamps, Pipe Jigs & Source Stands

Item	Description
SP*00001793	2.5" Heavy Duty Stainless Steel Grip Head with "T" Top and 5/8" Socket
SP*001153	Swivel Clamp Holder
SP*001305	2" Contact Jig (Standard)
SP*001306	2" Fitting to Fitting Contact Jig
SP*001268	18" Source Stick with Built-In Collimator Holder
SP*001575	RT Jig - 11" C-Clamp with Welded Angle Iron and an 18" CS Rod Welded and Painted Black
SP*001577	RT Magnetic Source Stand with (3) 90lb pull magnets including handle and crossbar painted black
SP*001559	Aluminum Magnetic Source Stand with (2) 225lb pull magnets and a 18" x 5/8" rod
SP*001082	Source Stand 8" x 10" Carbon Steel U-Channel Base with Threaded 5/8" Diameter x 36" Long Aluminum Rod

**Custom Items are available upon request*



QED Mini Beam Collimator

High density collimator machined from solid tungsten bars, supplies a 4.5 Half Value Layer (HVL) of shielding for IR 192. Custom machined to fit standard source tubes. Collimator beam has an 60 degree cone window that eliminates film cut-off even on short source to film distances.



Item	Description
Q-CO-60M-4.5	60 Degree Angle Beam Mini Collimator, 4.5 HVL (Ir 192)

Collimator Clamp

Item	Description
C-CLAMP	Designed to fit 1.5" diameter Collimator. Made of .062" stainless spring steel with slotted ears to accommodate a 6 foot web belt (included) for securing to the pipe

Industrial Tapes

Item	Description	Size	UOM
PM2	Intertape Tan Kraft Flatback Paper Tape	1" x 60 Yards	Case of 36
PC 600	Shurtape Silver Cloth Duct Tape		Case of 48
TAPE-GAFFERS-1	ProTapes Black Cloth Gaffers Tape	1" x 55 Yards	Roll
TAPE-GAFFERS-2		2" x 55 Yards	



Paint Markers

▶ Since the 1970's, Sakura has been developing markers and pens for use in industrial environments. Extensive research, development and user feedback have kept Sakura in the forefront of meeting the market demand for specific product performance in various industrial applications such as ship building, welding, HVAC, highway construction, aerospace, plumbing, automotive assembly, petrochemical, shipping and electronics.

▶ Markal Valve Action is a fast-drying liquid paint marker that provides long-lasting, wear- and weather-resistant marks that are safe for almost any surface. As the most versatile liquid paint marker in the world, the xylene-free paint reduces user health risks and is available in 18 bold and fluorescent colors for accurate mark identification.

Brand	Model	Available Colors	Tip Diameter	Temperature Range
	Solid Marker Original	11 - White, Black, Blue, Red, Green, Purple, Orange, Yellow, Fl. Lemon, Fl. Orange and Fl. Pink	13mm	14 - 392 °F
	SM Low Temperature	6 - White, Yellow, Red, Blue, Green and Black	13mm	
	SM Low Temperature Slim	5 - White, Yellow, Red, Blue and Black	10mm	-40 - 212 °F
	SM Low Halogen	4 - White, Black, Red and Yellow	13mm	
	Pen-Touch Medium	10 - White, Black, Yellow, Red, Purple, Green, Blue, Gold, Silver and Copper	2mm	41 - 104 °F
	Valve Action	18 - Brown, Purple, White, Yellow, Red, Black, Orange, Blue, Green, Gold, Light Green, Pink, Aluminum, Light Blue, Fl. Yellow, Fl. Green, Fl. Orange, Fl. Pink	3mm	-50 - 150°F

**Additional Brands and Models are Available Upon Request / Markers are Sold per Box of 12*

FILM STORAGE

Interleave Paper

- ▶ In-house QED film interleaf paper (White in Color) is acid-free and comes in three common film sizes.
- ▶ South Interleaves (Yellow in Color) are produced using the alkaline paper making process and are available in most film sizes.

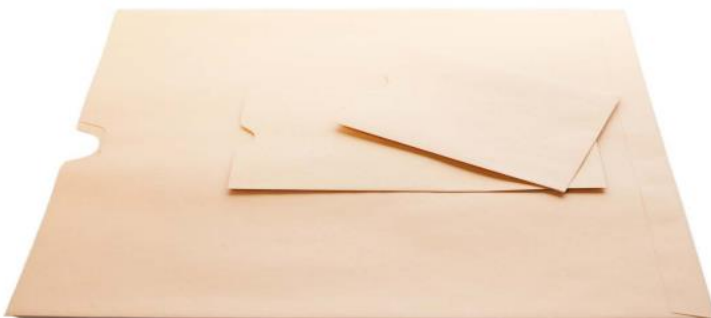
Brand	Item	Size	UOM
QED	IP4.5X10-200	4.5" x 10"	 <p>QED PACK OF 200</p>  <p>SOUTH PACK OF 200</p>
	IP4.5X17-200	4.5" x 17"	
	IP7X17-200	7" x 17"	
	IP14X17-200	14" x 17"	
South	INT3.5X10-200	3.5" x 10"	
	INT3.5X17-200	3.5" x 17"	
	INT4.5X10-200	4.5" x 10"	
	INT4.5X17-200	4.5" x 17"	
	INT5X7-200	5" X 7"	
	INT7X17-200	7" X 17"	
	INT8X10-200	8" X 10"	
	INT10X12-200	10" X 12"	
	INT11X14-200	11" X 14"	
	INT14X17-200	14" x 17"	

Film Storage Envelopes

High Grade 28 oz. and 32 oz. brownkraft exposed film storage envelopes. Available in both Unprinted and PRINTED.

Size	UOM
4.5" x 10"	Pack of 100
	Case of 500
4.5" X 17"	Pack of 100
	Case of 500
5" X 7"	Pack of 100
	Case of 1,000
7" X 17"	Pack of 100
	Case of 500
8" X 10"	Pack of 100
	Case of 500
10" X 12"	Pack of 100
	Case of 500
11" X 14"	Case of 500
14" X 17"	Pack of 100
	Case of 500

****Printed Envelopes are Customized as per your Company Design or our Standard Layout****



****One time Set-Up Fee for all Printed Envelopes for the cost of the Metal Imprint Plate****

70mm Film Storage Boxes (100 Count)

Item	Description
70mm x 100 Compartment	<p>The top and bottom of our one-hundred (100) cell film storage box is constructed of heavy (200 BP) white corrugated cardboard. The die cut design with locking tabs is easily assembled by hand without the use of tape or staples. The pre-assembled one-hundred (100) cell divider sets in the bottom of the box, over a numbered grid that automatically denotes a space for each of the one-hundred (100) film.</p> <p>The separate lid is die cut design and printed with spaces allowing for all pertinent information as to the pipeline owner, engineering company, contractor, radiography contractor, job numbers, film numbers, etc. The lid also has a printed grid that allows space to record the disposition of each weld x-rayed. This 17" x 17" x 3" storage container allows an inventory of radiographs to be taken without calculating how many odd number films each box contains.</p>

**Sold in Lots of 25 Only*

70mm Film Storage Boxes (25 or 49 Count)

Item	Description
70mm x 25 or 49 Compartment	12" x 12" x 3" corrugated cardboard storage box with a pre-assembled forty-nine (49) or twenty five (25) cell egg crate divider can be assembled with tape or a box stapling machine.

**Sold in Lots of 10 Only*

100mm Film Storage Boxes (100 Count)

Item	Description
100mm x 100 Compartment	15 9/16" x 15 9/16" x 100mm (4") corrugated cardboard box with a pre-assembled 100 cell egg crate divider can be assembled with tape or a box stapling machine.

**Sold in Lots of 10 Only*



70mm x 100 Compartment Box



70mm x 49 Compartment Box



100mm x 100 Compartment Box

RADIATION SAFETY WARNING SIGNS & LABELS



Radiation Signs

Our radiation signs, sun fast and sealed in two sheets of .016" vinyl, are manufactured in a variety of types. Our most popular are:

- ▶ DANGER – High Radiation Area
- ▶ CAUTION - Radiation Area Authorized Personnel Only

Available with Velcro for securing to a barrier rope or grommets on the corners of attachment to a flat surface.

Item	Sign Reads
Radiation Signs	Danger - High Radiation Area
	Caution - Radiation Area Authorized Personnel Only

Barricade Rope & Reel

- ▶ SP*001212 - Sun-fast, non-conductive, and reusable, yellow/magenta polypropylene barricade rope is a safe and easy method for marking off radiation areas. Ideal for hanging Velcro secured signs on.
- ▶ RR - Made of high impact polyethylene with ABS handle and knob.

Item	Description
SP*001212	Radiation Barricade Rope, 5/16" diameter x 1'
RR	13" Polyethylene Reel (holds both Barricade Rope and Tape)
SP*001261	Storage Wheel with Side-Mounted Handle Allowing you to Quickly Wind and Unwind Barricade Tape or Rope

**Barricade Rope is Sold in 600' Rolls*



Barricade Tape

Yellow/magenta barricade tape is safe, economical, and an easy method of marking a large radiation area quickly. The nylon reinforced tape is sun-fast, non-conductive, and reusable. Available in the following:

Item	Size	Strength
BT-3/4"	3/4" X 150 ft. Roll	100 lb. Tensile Strength
BT-2"	2" X 150 ft. Roll	300 lb. Tensile Strength
BT-3"	3" X 1000 ft. Roll	500 lb. Tensile Strength

Adhesive Signs & Cones

- ▶ Adhesive Backed Vinyl Signs - 7" x 10" made with Outdoor Durable Vinyl.

Item	Description
H1418-AB	Caution Radiation Area Keep Out Sign, 7" x 10", Outdoor Durable Vinyl (Adhesive Backed)
H1402-AB	Caution High Radiation Area Sign, 7" x 10", Outdoor Durable Vinyl (Adhesive Backed)
SP*001252	Caution Radioactive Materials Sign, 7" x 10", Outdoor Durable Vinyl (Adhesive Backed)
OC-18	18" Orange Premium PVC Safety Cones - No Reflective Collar



Transport Labels

Item	Description	UOM
SP*001073	1 1/2" Diameter RQ Circle Labels	500/Roll
SP*001074	4" x 4" Radioactive II D.O.T. Class 7 Hazard Labels	
SP*001078	4" x 4" Radioactive III D.O.T. Class 7 Hazard Labels	



PERSONAL DOSIMETRY

Electronic Dosimeters



MIRION
TECHNOLOGIES

RAD-60 ELECTRONIC DOSIMETER

RAD-60 Personal Alarm Dosimeter is a precise radiation measuring instrument for reliable detection and registration of radiation in order to ensure the personal safety of the user. It is suitable for a broad range of everyday radiation monitoring purposes in stand alone conditions.



KEY FEATURES:

- ▶ Solid state Detector
- ▶ Compact (3.1" x 2.6" x 0.8") and Lightweight (2.8 oz)
- ▶ Standard AAA Alkaline Battery (1800 Hours of Operation)
- ▶ Digital Display for Integrated Dose or Alternatively Dose Rate
- ▶ User Selectable Alarm Levels for Both Dose and Dose Rate
- ▶ Increased Buzzer Volume
- ▶ Ruggedized Clip Fixing / -4 °F to 122 °F operational, humidity up to 90% RH
- ▶ Measurement Range: Dose (0.1 mrem - 999 rem) / Dose Rate (0.5 mrem/hr - 300 rem/hr)

ADR-1 DOSIMETER READER

The ADR-1 Reader Head is designed to read and manage RAD-60 series electronic dosimeters in modern PC environment. The Reader can be used with Dose Control I Dosimetry System as well as with ADR-1/50 Dosimeter Configuration software.

DOSIMETER CONFIGURATION SOFTWARE

- ▶ Dose and Dose Rate reset
- ▶ Dosimeter configuration set-up
- ▶ Alarm levels set-up
- ▶ ID, Work code and Memo set-up



Item	Description
1233-218	RAD-60R Personal Alarm Dosimeter
1233-156	ADR-1 Dosimeter Reader. Includes: RS-232 cable and 12V power supply (No Software)
1233-163	ADR-1/50 Dosimeter Configuration Kit for RAD-60. Includes: ADR-1 Reader, ADR-1/50 Dosimeter Configuration Software, RS-232 cable and 12V power supply

DMC 3000 PERSONAL ELECTRONIC DOSIMETER

Our DMC 3000 Electronic Dosimeter represents over 25 years of real-world electronic dosimetry experience, continually refined through customer feedback.

The unique, high contrast and backlit LCD display provides a clear indication of wearer's dose and ambient dose rate for deep dose equivalent. More importantly, multiple methods (audible, visual, and tactile) are utilized to alert the wearer of alarm conditions.

The DMC 3000 provides all of this protection, for over 2500 hours of continuous use, with a single AAA alkaline battery.



KEY FEATURES:

- ▶ Loud, vibrating and dual ultrabright LED alarm
- ▶ Highly visible backlit display
- ▶ Simple 2-buttons navigation
- ▶ Additional modules (Beta, Neutron, telemetry and PRD)
- ▶ Superior X-ray and gamma energy response
- ▶ Exceeds applicable IEC and ANSI standards
- ▶ Excellent immunity to electromagnetic interference
- ▶ Designed for ruggedness and durability

MEASUREMENT RANGE:

- ▶ Dose: 0.1 mrem to 1000 rem
- ▶ Rate: 0.01 mrem/hr to 2000 rem/hr
- ▶ Saturation Indication: above 1000 rem or 1000 rem/hr

MECHANICAL CHARACTERISTICS:

- ▶ Case: Rugged, high impact polycarbonate-ABS
- ▶ Dimensions: 3.4 x 2.3 x 0.8 in max. without clip
- ▶ Weight: 3.1 oz with alkaline battery and clip

ENVIRONMENTAL CHARACTERISTICS:

- ▶ Temperature range: 14°F to 122°F
- ▶ Relative humidity: < 90% at 108°F
- ▶ Storage: -4°F to 160°F
- ▶ Shock, vibration and drop resistant (5 feet on concrete)
- ▶ Waterproof IP67

ALARM FEATURES:

AUDIBLE & TACTILE

- ▶ Alarming speaker with level of 85 dB at 12 in, frequency < 4800 Hz
- ▶ Vibrating alarm

VISUAL

- ▶ High efficiency red flash LED on front
- ▶ 3 top LEDs for Alarming (Red), gamma counting (Green), and Hp (0.07) or Neutron counting (Blue)

HANDS-FREE DOSIMETER READER - LDM 320D & LDM 320W

The LDM 320D and LDM 320W readers operate using software packages installed on computer (PC) and communicate with DMC 3000 dosimeter in hands-free data exchange mode.

When used with the DMC User software, it functions as an interface to read and write the internal data of the DMC 3000 dosimeters.



CUSTOMIZE

- ▶ Adjustable dose and dose rate alarms
- ▶ Adjustable and acknowledgeable dose and dose rate warnings
- ▶ Configurable visual and audible alarm chirp



Nuclear Power



Healthcare



Homeland Security & Defense



Labs and Education



Industrial and Manufacturing

Item	Description
153503	DMC 3000 Electronic Dosimeter for Gamma Radiation and X-Rays
150534	LDM 320D Dest Top Reader with USB Connection
150517	LDM 320W Wall Mounted Reader with USB Connection



NDS Products, Inc manufactures nuclear radiation detection instruments. These instruments are used in many fields, such as Industrial Radiography, Health Physics, Nuclear Power Plants, Geology, Medical, Emergency Response and a variety of other areas.

Survey Meter, Rate Alarm and Pencil Type Dosimeter

Item	Description
ND-2000	NDS Products 3 Range (0-1000, 0-100, 0-10 mR/hr) Survey Meter
RA-500	NDS Products 500 mR/hr Audible Rate Alarm
4329	W138, Pencil Type Dosimeter, 0-200 mR



Dosimeter Chargers and Pouches

► 750-6 Piezoelectric Dosimeter Charger can zero a variety of quartz or carbon fiber dosimeters by simply squeezing the lever of the piezoelectric generator. The charger requires absolutely no batteries...ever! By pulling the trigger, a dosimeter is easily placed in or removed from the Charger. The clamping action automatically holds the dosimeter for you. Ideal for using in Field Operations.

► 909B Dosimeter Charger - Easier charging, viewing, dosimeter protection and improved accuracy... these are the biggest reasons that the 909B Dosimeter Charger is the best value on the market today!

Item	Description
750-6	Pistol Grip Piezoelectric Dosimeter Charger
909B	Battery Powered Dosimeter Charger
SP*001221	Multi-Purpose Poly Holder, Fits Rate Alarms, Pencil Type Dosimeters & other Small Tools
RACASE	NDS Products Black Mesh Rate Alarm/Dosimeter Holder



750-6



909B



*SP*001221*



RACASE

DARKROOM PROCESSING AIDS

Safelights

Item	Description
PTP760U	Paterson Dome Safelight, with its 4.5" diameter, is designed to stand on a bench, hang on a wall or suspend from the ceiling.
SP*001535	18" LED Rope Safelight, Red (Lasts up to 50,000 hours); Easy to install; Hardware included
19198	The Swivel Safelight is perfect for direct spotlighting. This wall mounted unit swivels to any position. Easy to install via 2 keyholes, the Swivel Safelight includes a GBX Type filter, light bulb, and a 6' cord with a three prong plug.
SP*001674	24" Fixture and LED Tube Safelight (Lasts up to 50,000 hours)
SP*001675	24" LED Tube Safelight Only (Lasts up to 50,000 hours)



PTP760U



*SP*001535*



19198



*SP*001674*

WOLF Developing Hangers (Clip-Type)

Clip-type hangers for tank development of sheet films. Four clips are attached to a stainless steel frame; the upper two are mounted on a bow string to keep the film taut. The interlock design of the clip results in accurate alignment of pin and hole and permits better washing in the clip areas. Larger sized have loop guides to hold the bow spring and top clips in line to maintain proper tension. Hangers hold two film - Made in the USA!

Item	Description
16317	WOLF Industrial Developing Hanger, Two Film, Clip/Tension Type, Stainless Steel Construction, 4.5" x 10"
16317-S	WOLF Industrial Developing Hanger, Two Film, Clip/Tension Type, Stainless Steel Construction, 4.5" x 10" with 3" Spacer
16319	WOLF Industrial Developing Hanger, Two Film, Clip/Tension Type, Stainless Steel Construction, 4.5" x 17"

Developing Reels and Rod

- ▶ Developing Reels are made of durable ABS plastic, designed for the developing of 70mm roll film. Each Developing Reel will hold 13 feet of roll film.
- ▶ Developing Rod is constructed with a 24" x 3/4" PVC pipe to ensure minimum contamination of chemicals; not fancy, but effective.

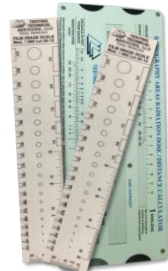
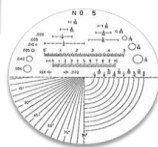
Item	Description
SP*001309	70mm Developing Reel
90MM-DR	90mm Developing Reel
100MM-DR	100mm Developing Reel
4.5"-DR	4.5" Developing Reel
ROD-PVC	Developing Rod, 24"L x 3/4" Diameter PVC



Miscellaneous Darkroom Supplies

- ▶ The Mini Comparater 7X is a handy and accurate optical measuring instrument composed of a #5 reticle. Compared with conventional magnifiers, the Mini Comparater 7X is smaller, more convenient for carrying and reasonably priced.
- ▶ MD-1 is a pocket-sized plastic scale to aid radiographers in the correct size identification of internal gas porosity and rounded indications in welds. Can be used in conjunction with the ASME codes dealing with rounded indications characteristics.
- ▶ MD-2 is a pocket-sized plastic scale to aid radiographers in the correct size identification of indications in pipe welds with outside diameters greater than or equal to 60.33 mm (2-3/8 in.). Can be used in conjunction with API 1104.
- ▶ Radiation Dose / Distance Calculator - This is a companion tool to the Radiation Exposure Calculators. This calculator estimates the hazard area associated with isotope radiographic operations. Can be used to assist auditors and radiation safety officers when checking the accuracy of radiation survey reports.
- ▶ Exposure Calculator - Available in durable plastic, exposure calculators are designed to provide rapid and precise exposure times for gamma radiography of both Cobalt 60 and Iridium 192.
- ▶ Carestream NDT Image Guide - This guide is designed to help you identify and understand a wide variety of casting and welding defects that appear on images obtained during Non-Destructive Testing (NDT).

Item	Description
SP*001237	14" x 17" Processor Clean-Up Film, 100/Pack
SP*00001770	Mini Comparater 7X with #5 Reticle and Fabric Pouch
MD-1	Model-1 (ASME) Film Image Scale w/certs
MD-2	Model-2 (API 1104) Film Image Scale w/certs
DDC	Radiation Dose/ Distance Calculator
EXPCALC-EN	Carestream Film Exposure Calculator, Iridium 192 (Same as JEM & other brands)
8924177	Carestream NDT Image Guide
300	GRALAB Model 300 Timer
Squeegee	Squeegee, 4.75" Wiper Length
3150SS	Immersion Heater
SP*001326	28" Plastic Stirring Paddle
SP*001072	7 1/4" Floating Thermometer w/ String Cord & F/C Display (30°F-120°F/ 0°C-50°C)



MOBILE DARKROOMS

Lemker & Harris Darkrooms

Building Darkrooms Since 1975

Lemker & Harris is the leading manufacturer of mobile fiberglass RT darkrooms and developing tanks for the NDT service and inspection industry in the USA. We've been a family owned business operating since 1975.

We have three models of darkrooms in our "off the shelf" designs. They are the 6', 8', and 8' Generator. All of these models include a developing tank, front foil, 26 hanger dryer, driver side cabinet, and a cabinet above the developing tanks recessed into the foil. You then have the option of whether or not you want to go with the roof mount RV Style air conditioner, or if you want us to install a standard window unit.

We are here for the long haul and stand behind what we build. Our typical unit usable life is over a decade and with proper care, we see them last even longer.



Item	Description
CR6	L&H 6' Darkroom w/ Rear Mount AC
CR8	L&H 8' Darkroom w/ Rear Mount AC (Full bed width without generator compartment)
CR8G	L&H 8' Generator Darkroom w/ Rear Mount AC
CR8G-CR	L&H 8' Generator CR Darkroom w/ Rear Mount AC and Additional Cabinetry for CR Workflow

Roof Mount AC is an Available \$475 Option

6' Darkroom

This unit is the most popular with pipeline work. Combined with an 8' bed, you have ample storage for anything you may not want to load into a darkroom, but need on the right-of-way.



8' Darkroom

Our 8' units give the technician the most room inside possible for them to work. They also have the most storage inside of the unit. For plant/shop work, this unit is a go to for many companies.



8' Generator Darkroom

This is just like our standard 8' unit, but with the exception of having a convenient storage compartment on the driver's side to store a generator. This unit is versatile as it allows you to have the interior space of an 8' unit with space to keep a generator for those times that there is no supplied power to hook up to.



**FREE
INSTALLATION**

We will install your new darkroom on your truck at no additional cost, if you pick up at our Houston facility.

Miscellaneous Darkroom Products

L&H DEVELOPING TANKS

Our Developing Tanks are Widely Considered to be the Industry Standard

The standard design is (5) 10 gallon compartments, which we refer to as the "5 Even". This has been the design that 95%+ of companies have preferred for at least the past 15 years, but we are also happy to provide a developing tank built to your specifications to fit your needs.

Starting in late 2019, we replaced the welded stainless pipe/stud that was used to secure the lid with a serviceable stainless forged receiver with a removable stud that allows you to replace the threaded stud at any point if needed.

It is one of the many ways that we are constantly pushing ourselves to see if there is a better way for us to provide an even better product for our customers.



*SP*001764*

Item	Description
SP*001764	L&H Developing Tank w/ 5 Even (10 Gallon) Compartments and PVC Plumbing
SP*001499	21" Wide x 3/4" Thick x 1" Long Developing Tank Replacement Seal with Peel off Adhesive (Specify Length When Ordering)
SP*001053	Replacement Low-Profile Darkroom Heater/Blower
SP*001581	Source Overpack Box with Mounting Bracket Fits all OEM's Gamma Ray Projectors (ID: 16"L x 10"W x 10.5"H)



*SP*001499*



*SP*001053*

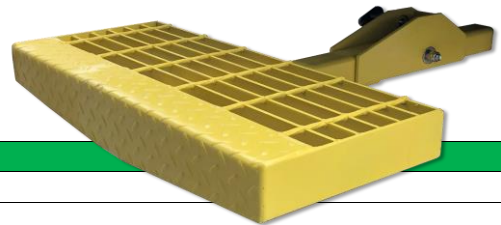


*SP*001581*

DARKROOM TRUCK STEP

Black Truck Steps are Available Upon Request

Rugged Steel Construction, Easy in and out of the truck. Slides into receiver hitch and lifts up during travel and down for use. Helps reduce or eliminate any possible falling accidents.



Item	Description
LH-FS	Fixed Darkroom Truck Step, Yellow
SP*001235	Darkroom Truck Step without Hand Rail, Yellow
LH-HS-R	Hinged w/ Handrail Darkroom Truck Step, Yellow



*SP*001235*



LH-HS-R

AUTOMATIC FILM PROCESSORS

Carestream NDT

INDUSTREX PROCESSORS

Quality Images, Efficient Output, Energy and Water Savings

INDUSTREX M37 Plus for space-saving design and mid-volume output or the INDUSTREX M43iC for high-volume output

M37 Plus Film Processor



The tabletop INDUSTREX M37 PLUS is ideal for automatic processing in mid-volume facilities. While compact, it offers the output you need and the excellent image quality and reliability you demand.

The new INDUSTREX M37 Plus film processor incorporates all the experience and features you've come to expect from the INDUSTREX line of products for NDT applications. The processor ensures totally automatic film handling and supports nine programmable-controlled processing channels that allows for flexibility in your day-to-day NDT film production.

Features Include:

- Ease of operation with nine programmable-controlled processing channels
- 17" processing width
- Capacity of 33 sheets/hour (14" x 17") in recommended processing cycle
- Intermediate rinse rack bath system
- Automatic replenishment system for developer and fixer
- Automatic anti-oxidation and anti-crystallization cycles
- Enhanced cold water cooling system
- Unit pre-configured with connection fittings to simplify installation of optional external chiller

Standard Accessories Include:

- Two 8 gallon replenishment storage tanks
- Light tight feed-tray cover
- Table stand
- Re-locatable controller unit for operator convenience
- Spare part kit

M43iC Film Processor

Designed to meet the needs of high-volume Non-Destructive Testing customers, the INDUSTREX M43iC provides multiple processing cycles and dry-to-dry processing in as little as five minutes.

This processor also comes standard with an integrated closed-loop chiller to ensure consistent temperature in hot environments or when water supply is not temperature controlled to further enhance capability and image quality in harsh NDT environments.

Features Include:

- Up to nine programmable-controlled processing channels for maintaining preferred settings such as processing speed, developer temperature, fixer temperature, dryer temperature and replenishment rates
- High processing capacity of up to 58 sheets/hour (14" x 17") in the recommended processing cycle for improved productivity
- An intermediate fix rinse system that enhances process uniformity to both sides of the film
- Feed-tray cover that allows for room light operation
- Integrated chiller unit that maintains developer temperature uniformity in hot environments
- Low level monitoring of all tank solutions

Standard Accessories Include:

- Replenishment storage tanks
- Light tight feed-tray cover
- Re-locatable controller unit for operator convenience
- Spare part kit



COMPUTERIZED RADIOGRAPHY (CR)

Carestream NDT



HPX-PRO Portable Digital CR System

The HPX-PRO CR system is built for high image quality, improved productivity and extreme portability. This next-generation system is lightweight (35 lbs.), portable CR imaging solution that is quick to deploy and rapidly produces high-quality images utilizing a new single-pass scan/erase protocol. The HPX-PRO's software incorporates a new user interface designed to get you set-up and imaging fast, with batch mode

capacity to keep in pace with extreme process conditions like pipeline imaging. The new software tools also provide quick image analysis and customized reporting for generating unique customer reports in seconds. From hardware to software, to deep in the field and instant image sharing, the HPX-PRO is a complete system, designed to improve productivity.

HPX-PRO



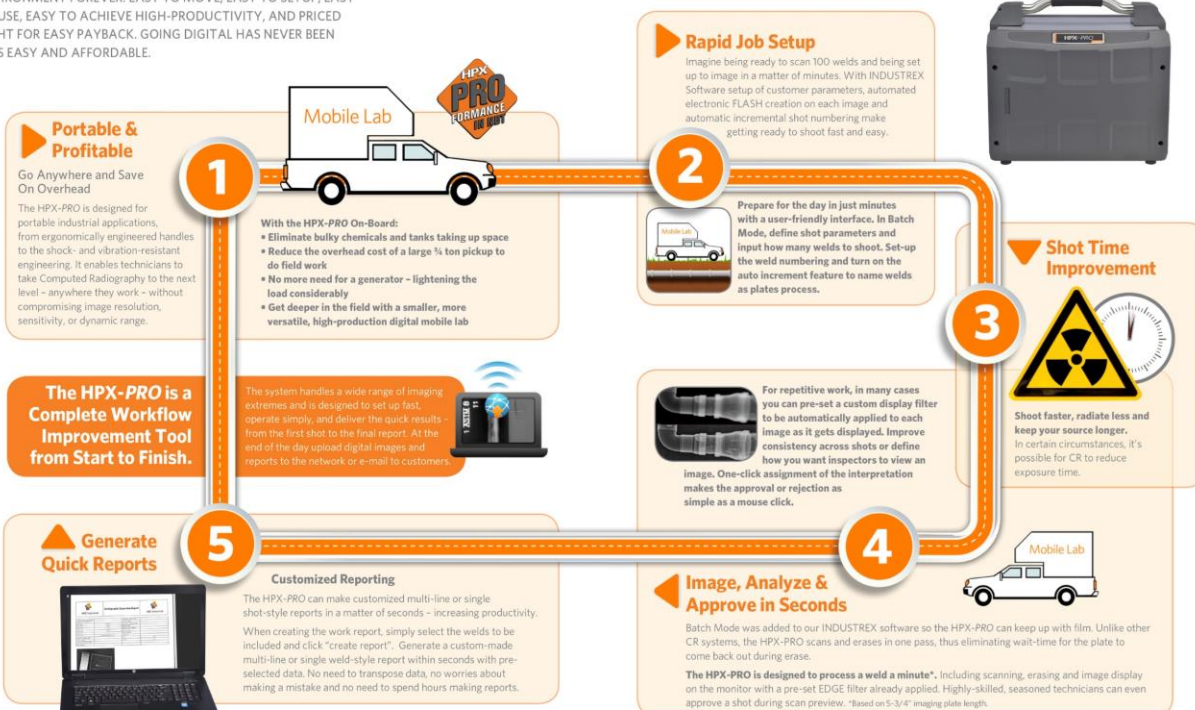
Carestream spent a considerable amount of time working in the field with mobile x-ray technicians to help improve workflow. The HPX-PRO is only one piece of the total imaging solution. From shot time to final reporting, everything had room for improvement. And we met the NDT industries challenge.

- Weighing in at just 35 lbs. and with a less than 12" width can be hand-held with ease.
- Can be operated by using a common 24v power tool battery (4 hour standby/ 45 minutes active scanning and erasing per battery)
- INDUSTREX Custom Reporting tool will help you finish your day a lot sooner, and with more productivity. Once you have all your shots done, with the click of a button you can create customer reports in a matter of seconds.

PRO-fessional Workflow for High PRO-ductivity

THE HPX-PRO WILL CHANGE THE WAY YOU WORK IN A MOBILE ENVIRONMENT FOREVER. EASY TO MOVE, EASY TO SETUP, EASY TO USE, EASY TO ACHIEVE HIGH-PRODUCTIVITY, AND PRICED RIGHT FOR EASY PAYBACK. GOING DIGITAL HAS NEVER BEEN THIS EASY AND AFFORDABLE.

HPX-PRO On-the-Go



HPX-1 Plus Digital CR System

The HPX-1 Plus offers many improvements. Improved optics for better imaging, up to 30% faster throughput on long saturated plates (very high exposure), an improved imaging plate transport system to protect imaging plates, higher mechanical reliability and a more user-friendly DICONDE compliant software for the best experience in digital imaging.

The HPX-1 Plus is a full width CR reader capable of running extra long imaging plates. The system has a wide dynamic range with high sensitivity, making it ideal for almost any type of imaging application. Whether you're using a gamma or X-ray source, the HPX-1 Plus' high sensitivity can help reduce shot time. It shows exceptional performance in weld

applications, delivering weld-quality images consistently and dependably.

Carestream's award-winning HPX family of digital products have improved field reliability and enhanced the capabilities in the NDT marketplace. Long plate and multi-plate scanning combined with SmartErase boosts output productivity so you can get more done in a day than ever before. Our exclusive positive pressure filtered air system keeps dust and dirt out for cleaner images in both the laboratory and in remote operations. With a shock and vibration resistant design your team can image in the harshest of environments bringing a new level of confidence to digital imaging in the field.



HPX-1 Plus



Ultra High Image Quality

Pixel Pitch: 25µm, 35µm, 50µm and 100µm operation

Spatial Resolution: 50 microns or better (12 lp/mm)

Laser Spot Size: 20µm (measured at 85% of peak)



Positive Pressure Fans for Dirty NDT Environments

Let's face it, NDT environments can be dirty. Drum and flat bed style scanners collect contaminants on the surface where they can be transported into the system or into the optical path and be imaged. HPX-1 Plus is the only CR system on the market that has positive airflow to keep contaminants outside the unit.



Dual Air Filters (including HEPA)

Clean air is critical to keeping the equipment cool and the imaging areas clean. The HPX-1 Plus is the only system outfitted with dual filters to make sure the environment is kept outside.



Image Plate Flexibility

HPX systems are one of the most flexible CR systems on the market capable of handling raw imaging plates, multiple plates at one time, custom cut sizes (with Plate Carrier), hard cassettes and long Plates (up to 60") without special feed guides.



Plate Transportation System

The HPX-1 Plus plate transport system has always minimized contact with the imaging plate. Unlike magnetic plate drive systems that require uniquely designed imaging plates (which can be costly) or drum systems that advise using plate protective covers to avoid plate damage, the HPX-1 Plus run plates phosphor side up with a proven transport system that won't damage your imaging plates.



Improved Imaging

HPX-1 Plus' improved PMT's improve its sensitivity and reduce unwanted artifacts. CR systems often also make it possible to lower your exposure while still achieving the required sensitivity. Our adjustable PMT and Laser Power allow you fine tune every image for optimum capture every time.



Powerful Software

HPX-1 Plus is operated using our powerful INDUSTREX software that includes a host of features for measurement, custom designed EDGE Image Filters, full DICONDE compliance, and many other tools designed specifically for NDT.



CR IMAGING PLATES

Carestream NDT

The Carestream INDUSTREX improved Flex GP, HR and XL Blue Digital Imaging Plates are:

- Flexible – Wrap around most shapes
- Sharp – Better resolution than high-speed films, and a suitable replacement for many applications
- Versatile – Use in a rigid or flexible cassette
- Efficient – Phosphor plates can be erased and reused thousands of times, require less exposure than film, and provide faster image access
- Certified – All plates meet requirements for the highest system class per EN 14784-1 and ASTM E 2446



Profile Board

General Purpose (GP)

The general purpose imaging plate is ideal for shots where fine detail is not required. Good for profile shots. It requires the lowest dose, which helps productivity. This plate is best utilized for high energy X-ray or Gamma applications. Typical industries are security, military, and castings.

Item	Size
1008564	14" x 17"

High Resolution (HR)

The high resolution imaging plate is best for applications where the best imaging quality is required. This plate produces weld quality images, and has the best detectability (contrast sensitivity) in the industry. This plate can be used for general X-ray, and Iridium or Selenium applications. Typical industries are oil and gas and aerospace.

Item	Size
8802324	70mm x 10"
8348641	70mm x 17"
8094922	3.5" x 10"
1904267	3.5" x 17"
1680214	4.5" x 10"
1466945	4.5" x 17"
1734334	6" x 10"
1734185	6" x 17"
1848688	7" x 17"
1775576	8" x 10"
1174424	10" x 12"
8360521	14" x 17"

HR-PRO (High Resolution - Laminated)

The HR-PRO Plate is designed with improved physical properties for use in HPX-PRO Readers in tough handling environments.

Item	Size
1752955	70mm x 10"
1752971	70mm x 17"
1753110	3.5" x 10"
1753136	3.5" x 17"
1753235	4.5" x 10"
1753243	4.5" x 17"
1753292	6" x 17"

Imaging Plate Accessories

Item	Description
SP*00001954	14" x 17" Profile Board
8607020	Carestream X-OMAT Antistatic Cleaning Solution for Intensifying Screens, 8oz Bottle
33390	KIMTECH Pure 100% Polypropylene W4 Dry Wipers 9" x 9", Pack of 100

DIRECT RADIOGRAPHY (DR)

Carestream NDT



HPX-DR Non-Glass DDA Detector

NEW NON-GLASS DR!

Carestream NDT once again introduces breakthrough technology for NDT field imaging with our new non-glass DR detector. The new HPX-DR Non-Glass detector design incorporates a tougher plastic material instead of glass for maximum durability against the rigors of NDT field work.

The HPX-DR Non-Glass detector virtually eliminates costly repairs for broken glass. It comes with a 2-Year warranty and a free loaner program so you can reduce downtime and the expense of purchasing redundant detectors.

The HPX-DR detector is unique in design – coming standard with a rugged, weatherproof enclosure perfect for remote field work. Unlike other panels that claim a weatherproof design when used inside their protective carrying case, this detector has an IP57 enclosure rating without the protective case! With the HPX-DR you can stop wrapping your DDA panel in bags and keep working in rain, snow, mud or whatever Mother Nature throws at you!

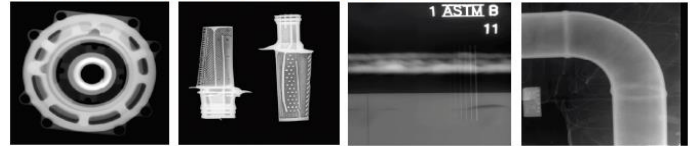
- **REDUCED EXPOSURE** - DDA panels are highly sensitive. Combine this with the ability to do frame averaging and you will likely be able to reduce your exposure time and still capture the sensitivity needed for your critical inspection task.
- **FASTER** - Uses no disposable media in the process, eliminating cassette loading and unloading time, developing, processing and reloading for the next shot. The HPX-DR detector offers quick start up and calibration, and rapid image display after acquisition. Produce high quality digital images in seconds for immediate analysis.
- **EASIER** - The HPX-DR detector is lightweight and compact with an all-weather design that is simple to operate. In the lab, it can be operated on a powered tether and in the field it can run 100% on battery. With the 'hot swap' feature the panel can remain on when changing batteries, increasing uptime.
- **WIRELESS** - The HPX-DR detector can operate completely wireless giving the user full freedom of movement and minimizing set-up time on site. This is especially helpful for rope access teams looking for minimal weight, high sensitivity and a powerful wireless connection.



- 139 μ Pixel Pitch
- 139 μ Spatial Resolution
- GOS DRX Standard Scintillator
- Portable at 12.5 lbs (5.7 Kg)
- Heavy Duty Shielding
- Exposure Range up to 3 MeV



HIGH RESOLUTION OUTPUT IN THE LAB OR IN THE FIELD



Protective cover for lab use increases detector load limit up to 340 kg. (750 lbs.).



Mount kit with pipe cleats to reduce stress on the detector for pipeline imaging.



X-RAY SYSTEMS & TUBES



**MANUFACTURER OF LIGHTWEIGHT,
PORTABLE X-RAY MACHINES**

Portable Pulsed X-Ray Generators

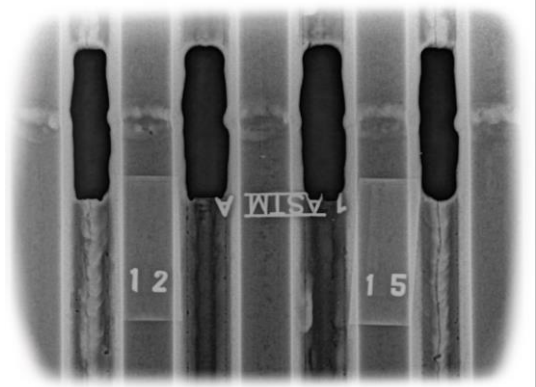
Golden Engineering X-ray generators are based on Pulsed X-ray technology. Pulsed X-rays generate a high intensity X-ray burst (pulse) in a very short period of time (10 to 50 nanoseconds depending on the model). The operator varies the overall dose of each exposure by changing the pulse setting. The pulse rate varies from 10 pulses per second to 25 pulses per second depending on the model. The generators can fire up to 200 pulses before a four-minute rest period.

Pulsed X-ray technology has inherent advantages for field operation compared to conventional constant potential X-ray machines or radioactive sources.

Golden X-ray generators are compatible with Conventional Radiographic Film, Computerized Radiography (CR) or Digital Radiography (DR) inspection systems. This provides users with the flexibility to develop a complete radiographic system best suited to their individual needs.

KEY BENEFITS:

- ▶ Convenience - Minimal disruption to normal on-going operations
- ▶ Portability - Applications often require X-ray be transported and used in remote locations with no access to power
- ▶ Safety - May require inspections within a relatively close proximity to personnel. Golden Engineering Pulsed X-ray generators contain no radioactive material. Minimal leakage to side and rear of the machine and minimal exposure time reduces standoff distance around the machine and reduces the possibility of accidental exposure.
- ▶ Durability - Rugged design can be used in a variety of environmental conditions and temperatures between -10 to 120 Degrees F°



Model	Weight	kV	Penetration in Steel	Avg. Dose mR/Pulse*	Pulse Width	Pulse Rate per Second	Rear Standoff Distance
XR200	11 lbs.	150	0.50"	2.6	50 ns	10	10 Feet
XRS3	11.8 lbs.	270	1.00"	2.6	25 ns	15	10 Feet
XRS4	18.3 lbs.	370	1.75"	4.5 - 7	10 ns	9	20 Feet

**mR per pulse measured 12" from source*

***3 pulses per count*



XR200 X-RAY GENERATOR

The XR200 is a 150 kV, single-package, pulsed x-ray generator used by military, law enforcement and industrial personnel for radiographic examination of various items.

Item	Model	Description
1220230	XR200	XR200 X-Ray (80 Char) 20V Kit 110V - Includes: XR200 Generator, 2 - 20V DeWalt Batteries, 110V Charger, Cable & Case

XRS3 X-RAY GENERATOR

The XRS-3 is a 270 kV, battery powered, pulsed X-ray generator. The XRS-3 is the most versatile unit because it provides exceptional penetrating ability, up to 1" of steel.

The compact design features a battery pack, sturdy glass tube, high voltage head and electronic controls in a single package that weighs less than 13 pounds.

It can withstand extreme environments including arctic and desert conditions.



Item	Model	Description
1320230	XRS3	XRS3 X-Ray (80 Char) 20V Kit 110V - Includes: XRS3 Generator, 2 - 20V DeWalt Batteries, 110V Charger, Cable & Case

XRS4 X-RAY GENERATOR

The XRS4 is a 370 kV, battery powered, pulsed X-ray generator.

Two features unique to the XRS-4 include a robust aluminum housing, and a bellows located in the handle. Both of these features improve the durability and longevity of the generator.

Weighing close to 19 pounds the XRS4 is significantly larger and heavier than other Golden Engineering generators. However, a 370 kV generator that penetrates more than 1.5 inches of steel and weighs less than 25 pounds is still considered extremely portable by industry standards.



Item	Model	Description
1410230	XRS4	XRS4 X-Ray (80 Char) 20V Kit 110V - Includes: XRS4 Generator, 2 - 20V DeWalt Batteries, 110V Charger, Cable & Case

COMET

Technology with Passion

PXS EVO Series

BUILT TO LAST

Designed and built in Denmark; the PXS EVO systems are comprised of the best components and assembled with the utmost care – making them reliable, long lasting and a sound investment. They are fitted with a high quality metal ceramic X-ray tube and the robust composite casing now protects all vital parts even better. The systems meet the IP65 standard, making them fully operational in dusty and wet conditions.

SMARTER WORKFLOW

The ergonomic design and the low weight makes the PXS EVO systems easy to handle and re-position. A broad temperature range from -4°F to 122°F makes the EVO systems reliable and ensures smooth operation even in extreme environments. The intuitive interface allows for a smarter workflow.

HIGH PERFORMANCE

Built to meet the highest international safety standards, each unit is individually tested and measured for safety and accuracy. The PXS EVO systems features focal spots from 1.0 mm to 3.0 mm and ranges from 750 W to 900 W constant potential X-ray power ensuring high performance, shorter exposure times and high resolution results.

EVO CONTROL

The ergonomic design and shoulder strap makes the CONTROL EVO easy to handle and re-position. All information is clearly displayed on the 6.5" LCD color screen. The unit features an exposure calculator and has an intuitive interface with a wide range of advanced functionalities – equalling a smarter workflow.



Portable X-ray generators from Comet are light, of high-quality and have been designed for flexible field inspection, in all types of industrial environments. We build our products with years of experience, skilled engineers and components of the highest quality. The combination of our new PXS EVO tube heads and CONTROL EVO is the key to a significantly improved workflow.

PXS EVO DIRECTIONAL

The combination of our new PXS EVO tube heads and CONTROL EVO is the key to a significantly improved workflow. Because the units are lighter, they are faster to handle and reposition.

PXS EVO PANORAMIC

The panoramic 38° x 360° X-ray beam, and the combination of up to 300 kV and 750 W, makes the PXS EVO a perfect choice for weld seam inspection of cylindrical vessels and pipes.

The re-engineered three-part lead belt is easy to mount and has as standard a 38° x 60° slit option allowing for directional use if required.



EXPOSURE CALCULATOR

The advanced built-in exposure calculator ensures fast exposure calculations and uniform results. It can calculate the minimum required film focus distance optimising the exposure time. It accommodates the use of a wide range of films, materials and settings.

PXS EVO WATER-COOLED

Special inspection jobs, may require special solutions. The water-cooled PXS EVO directional X-ray systems, offer 24/7 operation in ambient temperatures up to 86°F.

All directional PXS EVO tube heads are available in a hybrid cooled version, based on a water-cooled anode combined with an air cooled cathode end. The EVO series directional tube heads are available in 160-300 kV versions, all available with 1.0 mm small focal spot and the 225-300 kV variants also with 3.0 mm focal spot, in order to cover a broad range of applications.



Model	Height	Weight	Focal Spot Size	kV	mA	Beam Angle	Penetration in Steel
160D	24"	48 lbs.	1.0 mm	20 - 160 kV	0.5 - 7.0 mA	40° x 60°	1.30"
200D	25"	50 lbs.	1.0 mm	30 - 200 kV	0.5 - 6.0 mA	40° x 60°	1.85"
200P	26"	62 lbs.	0.4 x 4.0 mm			38° x 360°	1.59"
225D	28"	57 lbs.	3.0 mm	40 - 225 kV	0.5 - 5.5 mA	40° x 60°	2.15"
225DS			1.0 mm			30° x 60°	
225D/1200	32"	62 lbs.	3.0 mm	25 - 225 kV	0.5 - 10 mA	40° x 60°	
300D	30.5"	64 lbs.	3.0 mm	50 - 300 kV	0.5 - 4.5 mA	40° x 60°	2.75"
300DS			1.0 mm			30° x 60°	
300P	32"	80 lbs.	0.5 x 5.5 mm			38° x 360°	2.60"

**Penetration Calculations are based upon 27.5" FFD / AA400-Type Film + Pb / Density = 2.0*

COMET Industrial X-Ray develops and manufactures metal/ceramic X-ray sources, and the related components, for the non-destructive examination of materials in the automotive, aviation pipeline and steel industries, and also for the stationary and mobile inspection of baggage and cargo at airports and borders.

COMET constantly works to improve and simplify X-ray technology and is a trusted engineering partner to well-known companies. COMET's innovative technology has become the basis for an unprecedented combination of performance and compactness that offers customers a new realm of possibilities in the development of their end systems.



INDUSTRIAL X-RAY TUBES

Comet unipolar and bipolar X-ray tubes are available for different industrial applications. The product range features metal ceramic tubes and ceramic tubes, from the smallest portable unit up to 600kV fixed systems.

UNIPOLAR TUBES

Comet's unipolar tubes are used in demanding industrial applications. The top areas are non-destructive testing, food inspection and thickness gauging.

BIPOLAR TUBES

The advantages of Comet bipolar tubes are high power, small dimensions, low weight, and rugged design.

HIGH VOLTAGE X-RAY GENERATORS

Comet Industrial X-ray generators are built for remarkably stable performance. Our generators are designed to meet the demanding requirements of industrial X-ray applications. They are the ideal workhorse for both film and real-time applications. All generators are factory-configured and pretested.

iVARIO GENERATORS

Our latest future-orientated iVario generators feature an even more flexible, modular design, and have been engineered to serve the tube in the best possible way.

The generator contains the tube library, with optimized tube profiles (ramp-up and ramp-down profiles) that guarantee the longest possible lifespan for the tube and the best module (tube-generator) integration level.

Visualized tube diagrams with power levels allow to actively manage the tube lifetime. The intelligent, fully customizable arc-handling system reacts to the frequency of arcs - this protects the generator, maximizes the tube's lifespan and maximizes potential uptime. In addition, the accurate filament control prevents the filament current overstress.

XRP GENERATORS

COMET Industrial X-ray generators are perfectly matched for highly stable performance. The high-frequency XRP generator has been designed to meet the tough requirements of modern industrial X-ray applications. The XRP generator is the ideal workhorse for both radiographic and real-time applications.



COMET ACCESSORIES

What Comet provides next to main business: Besides tubes and generators, we are pleased to offer all of the necessary components for a customized X-Ray module.

INDUSTRIAL COOLERS / CHILLERS

A top-quality cooler is vital to the safe and reliable operation of your X-ray system. We supply a variety of coolers ideally balanced to work with Comet X-ray tubes.

HIGH-VOLTAGE SPRING LOADED CABLES

Comet supplies high-voltage cables in a variety of rated voltages and lengths. The advantages of the spring-loaded cable are higher up-time, lower installation costs, lower maintenance costs, and reduction in cable failures. The replacement of the elastomeric spring with a mechanical spring ensures constant pressure in the receptacle with a pressure indicator, ease of installation, and a reliable supply of power.

COMET CONTROLLER

The iVario generator can be controlled by the 19" external controller, which communication is based on the newly developed Ethernet Protocol. It comprises touchscreen panel, key switch, buttons and lamps as well as rotary knob. There can be an emergency stop incorporated into the controller.



MAGNETIC PARTICLE MPI CONSUMABLES

MAGNAGLO® / MAGNAFLUX®



Wet Fluorescent Magnetic Particles

Item	Product	Container Size	Particle Suspension Vehicle
01-0130-71	14A	1 lb. Jar	Petroleum Distillate (Oil), Water
01-0130-75		20 lb. Pail	
01-1725-35	14A Aqua-Glo	1 Gallon, Case of 4	Water
01-9130-41	14A Redi-Bath	27 oz. Bottles, Case of 6	Water
01-9130-35		1 Gallon, Case of 4	
01-0145-78	14AM	Aerosol, Case of 12	Petroleum Distillate (Oil)
01-0145-40		5 Gallon Pail	
01-0179-71	20B	1 lb. Jar	Water
01-0179-70		15 lb. Pail	
01-0179-84		30 lb. Pail	
01-0191-73	MG-410	2 lb. Jar, Case of 6	Petroleum Distillate (Oil), Water
01-0196-73	MG-450A	2 lb. Jar, Case of 6	Water

14A Aqua-Glo is a Ready-to-Use Liquid

Petroleum Base Suspension Vehicle

This petroleum distillate carrier oil provides excellent particle mobility, good suspension stability and enhanced corrosion protection for reliable, spec-compliant mag particle inspections

Item	Product	Container Size
01-2122-40	Carrier II	5 Gallon Pail
01-2122-30		20 Gallon Drum
01-2122-45		55 Gallon Drum



Water Conditioners and Additives

Item	Product	Description	Container Size
01-2190-40	AX-52	Water-Soluble Corrosion Inhibitor	5 Gallon Pail
01-2148-63	WA-2B	Water Conditioner	5 lb. Pail
01-9410-20	ZAF-2	Non-Silicone Antifoam	1 Gallon Jug



White Contrast Paint

A bright white, opaque NDT contrast paint, WCP-2 provides a high contrast background to improve probability of detection and sensitivity during visible magnetic particle inspections

Item	Product	Container Size
01-2250-78	WCP-2	Aerosol, Case of 12



Wet Visible Magnetic Particles

Item	Product	Container Size	Particle Suspension Vehicle
01-1116-81	7C Black	25 lb. Pail	Petroleum Distillate (Oil), Water
01-9140-35	MV-740	1 Gallon, Case of 4	Water
01-1580-78	7HF	Aerosol, Case of 12	Petroleum Distillate (Oil)

MV-740 is a Ready-to-Use Liquid

Dry Visible Magnetic Particles

Item	Product	Container Size
01-1716-69	#1 Gray	10 lb. Pail
01-1716-87		45 lb. Pail
01-1732-69	#2 Yellow	10 lb. Pail
01-1732-87		45 lb. Pail
01-1780-69	8A Red	10 lb. Pail
01-1780-87		45 lb. Pail





Circle Systems, Inc

Innovators in the Manufacturing of
Magnetic Particle Inspection Materials



Mi-Glow®

Wet Fluorescent Magnetic Particles

Item	Product	Container Size	Particle Suspension Vehicle
FG-3125	Mi-Glow 834	2 lb. Jar	Water
FG-3126		30 lb. Pail	
FG-3231	Mi-Glow 218X	2 lb. Jar	Water
FG-3238		30 lb. Pail	
FG-3321	Mi-Glow 418	2 lb. Jar	Water
FG-3320		30 lb. Pail	
FG-3590	CircleSafe 778A	Aerosol, Case of 12	Water
FG-3571	Mi-Glow 778	Case of 4-1 Quart	Water
FG-3100	Mi-Glow 800	1 lb. Jar	Oil
FG-3102		12 lb. Pail	
FG-3130	CircleSafe 800A	Aerosol, Case of 12	Oil
FG-3143	Mi-Glow 800L	5 Gallon Pail	Oil
FG-3162	Mi-Glow 920	2 lb. Jar	Oil



CircleSafe®

Odorless Inspection Oils

A high flashpoint, refined petroleum distillate specifically designed for use in magnetic particle inspection with its high clarity, low fluorescence and no odor characteristics

Item	Product	Container Size
FG-3883	CircleSol M	5 Gallon
FG-3880		55 Gallon



Water Conditioners, Additives & Wetting Agents

Item	Product	Container Size
FG-2950	Anti-Foam 3	Case of 4-1 Quart
FG-3851	Cleaner 500	1 Gallon
FG-3510	Corrosion Inhibitor 7	Case of 4-1 Quart
FG-3515		55 Gallon Drum
FG-2210	Wetting Agent 34	2 lb. Jar
FG-2211		30 lb. Pail
FG-3501	Wetting Agent 771	Case of 4-1 Quart
FG-3506		55 Gallon Drum

Wet Fluorescent & Visible (Dual) Red Magnetic Particles

Item	Product	Container Size	Particle Suspension Vehicle
FG-3661	Mi-Glow 634	2 lb. Jar	Water
FG-3662		30 lb. Pail	
FG-2991	Mi-Glow 601	2 lb. Jar	Oil
FG-2992		12 lb. Pail	
FG-3630	CircleSafe 850A	Aerosol, Case of 12	Water



Wet Visible (Black) Magnetic Particles

Item	Product	Container Size	Particle Suspension Vehicle
FG-2431	Mi-Glow 106	2 lb. Jar	Oil
FG-2438		30 lb. Pail	
FG-3609	CircleSafe 820AX	Aerosol, Case of 12	Oil
FG-3600	CircleSafe 820A	Aerosol, Case of 12	Water



Mi-Glow Underwater 1 is red particles pre-mixed with a powdered Wetting Agent for use in underwater inspection. The particles are used with visible light, black light and blue light. Designed to be used for a variety of underwater inspections.

Underwater Magnetic Powdered Particles

Item	Product	Container Size	Particle Suspension Vehicle
FG-2701	Mi-Glow	2 lb. Jar	Water
FG-2703	Underwater 1	25 lb. Pail	
FG-2771	Mi-Glow	2 lb. Jar	Water
FG-2773	Underwater 528	25 lb. Pail	

White Contrast Paint

Specially formulated, fast drying white contrast paint, used to create a consistent background on the component surface in a visible magnetic particle inspection

Item	Product	Container Size
FG-3740	Mi-Glow WCP	Aerosol, Case of 12



Dry Visible Magnetic Particle Powder

Item	Product	Container Size
FG-2551	Sir-Chem Dry Powder 61	10 lb. Jar
FG-2555	Gray	50 lb. Pail
FG-2571	Sir-Chem Dry Powder 63	10 lb. Jar
FG-2575	Red	50 lb. Pail
FG-2621	Sir-Chem Dry Powder 66	10 lb. Jar
FG-2625	Yellow	50 lb. Pail
FG-2631	Sir-Chem Dry Powder 68	10 lb. Jar
FG-2635	Blue	50 lb. Pail



Dry Fluorescent & Visible (Dual) Magnetic Particle Powder

Item	Product	Container Size
FG-2601	Sir-Chem Dry Powder 73	10 lb. Jar
FG-2605	Red	50 lb. Pail
FG-2641	Sir-Chem Dry Powder 75	10 lb. Jar
FG-2645	Green	50 lb. Pail





Wet Fluorescent Magnetic Particles

Item	Product	Container Size	Particle Suspension Vehicle
M-MPI-1400-bs12		Case, 12 Bath Shots	
M-MPI-1400-1	MPI-1400	1 lb. Jar	Oil
M-MPI-100-12		12 lb. Pail	
M-MPI-1400B-16	MPI-1400B	Aerosol, Case of 12	Oil
M-MPI-1400B-5		5 Gallon Pail	



Petroleum Bath Vehicle

MPI-Carrier Fluid C2 is a specialty petroleum based magnetic particle bath vehicle designed for high sensitivity fluorescent magnetic particle suspension

Item	Product	Container Size
M-MPI-FluidC2-05	MPI-Fluid C2	5 Gallon Pail
M-MPI-FluidC2-55		55 Gallon Drum

Wet Visible (Black) Magnetic Particles

Item	Product	Container Size	Particle Suspension Vehicle
M-MPI-80P-4	MPI-80P	4.4 lb. Jar	Oil
M-MPI-80P-10		10 lb. Pail	
M-MPI-80-16	MPI-80	Aerosol, Case of 12	Oil
M-MPI-80-5		5 Gallon Pail	



White Contrast Paint

Item	Product	Container Size
M-WCP-81-16		Aerosol, Case of 12
M-WCP-81-1	WCP-81	1 Gallon Pail
M-WCP-81-5		5 Gallon Pail

Dry Visible Magnetic Particle Powder

Item	Product	Temp. Range	Container Size
M-MPI-86B-6	MPI-86B		6.6 lb. Jar
M-MPI-86B-11	Dark Blue	Up to 800° F	11 lb. Pail
M-MPI-86B-50			50 lb. Pail
M-MPI-86G-6	MPI-86G		6.6 lb. Jar
M-MPI-86G-11	Gray	Up to 800° F	11 lb. Pail
M-MPI-86G-50			50 lb. Pail
M-MPI-86R-6	MPI-86R		6.6 lb. Jar
M-MPI-86R-11	Red	Up to 250° F	11 lb. Pail
M-MPI-86R-50			50 lb. Pail
M-MPI-86Y-6	MPI-86Y		6.6 lb. Jar
M-MPI-86Y-11	Yellow	Up to 800° F	11 lb. Pail
M-MPI-86Y-50			50 lb. Pail





Wet Fluorescent Magnetic Particles

Item	Product	Container Size	Particle Suspension Vehicle
GW-1	Glo-netic Powder Concentrate	1 lb. Jar	Oil or Water
GLO-NETIC-16		Aerosol, Case of 9	
GLO-NETIC-1	Glo-netic Premix	1 Gallon Pail	Oil
GLO-NETIC-5		2 Gallon Pail	



Contrast Paint

CP-1 Provides a High Contrast Strippable Background Coating.
 CP-2 Provides a High Contrast Non Strippable Background Coating.

Item	Product	Container Size
CP-1-16		Aerosol, Case of 9
CP-1-1	CP-1	1 Gallon Pail
CP-1-5		5 Gallon Pail
CP-2-16		Aerosol, Case of 9
CP-2-1	CP-2	1 Gallon Pail
CP-2-5		5 Gallon Pail

Wet Visible (Black) Magnetic Particles

Item	Product	Container Size	Particle Suspension Vehicle
BLACK-OXIDE-16	BLACK-OXIDE NO. 1	Aerosol, Case of 9	Oil



Magnetic Particle Fluid

Item	Product	Container Size
MPF-5	MPF	5 Gallon Pail
MPF-55		55 Gallon Drum



MPI CONSUMABLE AIDS

MATERIAL ACCESSORIES

Applicators & Centrifuge Tubes

- ▶ Magnaflux Centrifuge Tubes are individually Calibrated to monitor the precise concentration of magnetic particles in suspensions made with Fluorescent and Visible magnetic particles as per ASTM E709, ASTM E1444 or ASME Section V.
- ▶ Type 2000 Magnetic Stripe Card is used for instantly evaluating the performance of the fluorescent wet-method bath as per ASTM E-709 & ASTM E-3024. This card can be used to quantitatively evaluate the performance of the fluorescent materials by displaying the number of indications that can be observed after the material has been applied to the stripe.

Item	Description
PB-1	Magnetic Powder Blower provides reliable and controlled application of magnetic inspection powder to areas previously inaccessible
RB-4	Green Rubber Powder Applicator
RB-1	Powder Removal Bulb, Blue
625773	Model M 24 oz. Capacity Black Anodized Aluminum Sprayer w/ Nozzle #602, Adjustable from Extra Fine Mist to Pin Stream
2800	Type 2000 Magnetic Stripe Card
SP*001682	Centrifuge Tube for Fluorescent Magnetic Particles, 0 - 1.0 ml in 0.05 graduations (Certified)
SP*001683	Centrifuge Tube for Visible Magnetic Particles, 0 - 1.5 ml in 0.10 graduations (Certified)
SP*001684	Centrifuge Tube Stand



YOKES

PARKER RESEARCH/ MAGNAFLUX YOKES

Item	Description
B-100	Parker AC Contour Probe, 6.5 lbs.
B-200	Parker AC Contour Probe, 7.0 lbs. Slim line Ergonomic Handle and Oversized Operating Switch Provides a Comfortable Grip
B-300	Parker AC Contour Probe, 7.5 lbs.
DA-400	Parker AC/DC Contour Probe, 8.5 lbs.
628554	Magnaflux Y-2 AC Yoke, 4.8 lbs. (Detachable Cord)
625643	Magnaflux Y-7 AC/DC Yoke, 7.4 lbs.



YOKE ACCESSORIES

Item	Description
TB-10	Magnetic 10lb Weight Lift Test Bar (Weight is stamped on each bar and is traceable to NIST)
TB-10S-4	Set of 4 10lb Weight Lift Test Bars (Weight is stamped on each bar and is traceable to NIST)
Y200-1	Parker Y-200 Yoke Light (designed to fit B-200 Contour Probe)
Y300	Parker Y-300 Yoke Light (designed to fit B-300 Contour Probe)
Y400	Parker Y-400 Yoke Light (designed to fit B-100 or DA-400 Contour Probe)
628840	Magnaflux Y-2 LED Yoke Light



MAGNETIC PARTICLE AIDS FIELD INDICATORS

Item	Description
SP*001226	MD-220 Hall Effect Magnetic Field Strength Indicator
SP*001105	Pie Gauge Magnetic Field indicator with Certification
MG-25-10	Model 25 Magnetic Field Indicator, Range 10-0-10 (Calibrated)
MG-25-20	Model 25 Magnetic Field Indicator, Range 20-0-20 (Calibrated)
SP*001548	Economy Magnetic Field Indicator, Range 10-0-10 (Un-Calibrated)



QUANTITATIVE QUALITY INDICATORS (QQIs)

Quantitative Quality Indicators (QQI) are magnetic particle test piece shims with artificial defects used to verify field direction and relative strength. QQI's are also used to balance multi-directional fields and to increase productivity by minimizing magnetizing shots.

Item	Description
625551	Standard QQI, Model KSC-230, Circle-cross 0.002" shim thickness, 30% notch depth
625552	Miniature QQI, Model KSC-4-230, Mini circle-cross, 4 per shim, 0.002" shim thickness, 30% notch depth
625553	Standard QQI, Model KSC-430, Circle-cross, 0.004" shim thickness, 30% notch depth
625554	Variable QQI, Model KSCT-234, Three circles, 0.002" shim thickness, 20% / 30% / 40% notch depth
625555	Variable QQI, Model KSC4-234, Three circles, 0.004" shim thickness, 20% / 30% / 40% notch depth



625551

625552

625553

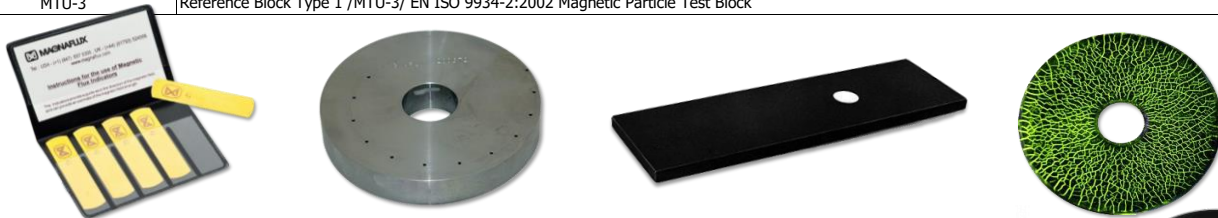
625554

625555

TEST PIECES

- ▶ **Magnetic Flux Indicator Strip** - Flexible indicators used to detect directional orientation during the magnetic particle testing process. Each indicator contains three milled slots with widths of .0075", .009" and .010" that share a common depth. The indicators are manufactured from permeable magnetic steel sandwiched between two brass plates and designed for repeated use in setting and monitoring magnetic field strength in wet and dry MPI applications.
- ▶ **Ketos Ring** - System Performance Test Piece - The tool steel ring is manufactured to AS-5282 requirements to demonstrate magnetic particle system performance. A progressive series of sub-surface holes are used to verify equipment performance at different amperages using HWDC or FWDC waveforms.
- ▶ **The Notch Defect Test Bar** - System Performance Test Piece - The MPI test bar is a standardized test piece conforming to NAVSEA T907A-AS-GIB-010/271 requirements to demonstrate magnetic particle system performance. The test bar includes both surface and sub-surface defects in two directions to verify both circular and longitudinal fields using AC or DC waveforms.
- ▶ **The MTU-3 Test Block** is used to check the sensitivity of magnetic particle materials.

Item	Description
008M004	Magnetic Flux Indicator Strips (Burma Castrol) Type I (G)eneral, Set of 5
SP*001685	Ketos Ring (AS-5282 Ring), O-1 Tool Steel including Certification Report
NA16	Notch Defect Test Bar (System Performance Test Piece - NAVSEA T907A-AS-GIB-010/271)
MTU-3	Reference Block Type 1 /MTU-3/ EN ISO 9934-2:2002 Magnetic Particle Test Block



MPI EQUIPMENT & ACCESSORIES PORTABLE COIL

Parker Portable Coil

The Parker PL-10 Portable Magnetizing Coil (9 7/8" inside diameter) is designed for magnetic particle inspection of ferrous metal parts. The coil allows for the use of either dry powder or wet fluorescent inspection media and may be used for demagnetizing as well.

The coil is molded in a tough black polyurethane material and comes equipped with the standard foot switch or an optional hand switch and 10' yellow neoprene power cord. The sealed electrical connection box has a 2" x 5" flat base allowing the coil to stand in a vertical position.



Item	Description
PL-10H	Parker 10" Portable Magnetizing Coil with Hand Switch, 115VAC with Carrying Case
PL-10F	Parker 10" Portable Magnetizing Coil with Foot Switch, 115VAC with Carrying Case



PORTABLE POWER PACK UNITS

The Portable Power Packs are convenient and economical inspection units that are used in a wide range of magnetic particle applications that require only moderate power. They are ideal for large or heavy parts, in-service mobile equipment or job-site welds.

BENEFITS

- ▶ Find surface defects with AC current; switch cable connection to half wave DC (HWDC) for near-surface flaws
- ▶ Locate defects in any direction using prods, central conductor, coil (wrap part with 3-5 turns of cable)
- ▶ Infinitely variable current control

FEATURES

- ▶ Demagnetize your parts in AC mode by slowly turning the current dial to zero
- ▶ Built-in automatic-reset circuit breaker
- ▶ May be used as the main power source for the Magnaflux MAG Kit modular bench inspection system

SPECIFICATIONS

	UNIT	
Model	P-70	P-1500
Foot Print	17.5"L x 9"W x 8"H	22"L x 9.5"W x 9.5"H
Weight	35 lbs.	93 lbs.
Maximum Output*	750 Amps AC or HWDC	1500 Amps AC or HWDC
Current Output* (single phase)	115 VAC 50/60 Hz 230 VAC 50/60 Hz	230 VAC 50/60 Hz 460 VAC 50/60 Hz
Line Current	26 Amps @ 115 VAC 13 Amps @ 230 VAC	42 Amps @ 230 VAC 21 Amps @ 460 VAC
Max Dut Cycle	2 Minutes ON 2 Minutes OFF	2 Minutes ON 2 Minutes OFF

**Current ratings based on use of two 15-foot lengths of 4/0 cable. *Other voltages available.*



Magnaflux P-70



Magnaflux P-1500



M-SERIES MOBILE POWER PACKS

The M-Series mobile power pack portable current generators facilitate testing of large and abnormally heavy parts with magnetic particle inspection. Magnaflux understands some parts cannot be moved so the magnetizing station needs to be brought to the part. The M-Series offers a solution by providing an adaptable mobile unit. These units feature AC or Half Wave DC output.

M-Series magnetic power packs are available in three configurations:

M-2030, M-2040 & M-2060

	UNIT		
Model	M-2030	M-2040	M-2060
Foot Print	46"L x 23"W x 39"H		
Weight	780 lbs.		
Maximum Output	3,000 Amps AC or HWDC	4,000 Amps AC or HWDC	6,000 Amps AC or HWDC
Available Voltages	380, 415, 460, 575 V	230, 380, 415, 460, 575 V	380, 415, 460, 575 V
Rated With	90' of 4/0 Cables	30' of 4/0 Cables	Two 30' of 4/0 Cables in parallel
Available Frequencies	50 or 60 Hz		

STANDARD FEATURES:

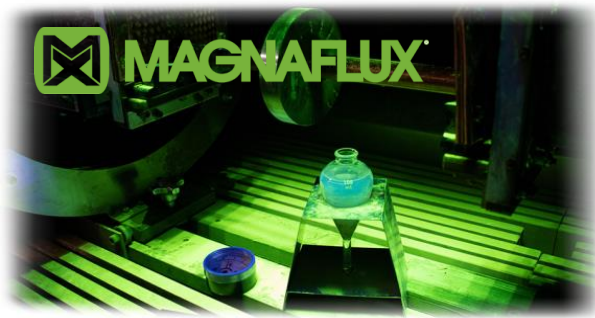
- ▶ Digital Meter Display
- ▶ 2 Bus bars for connection
- ▶ Push button switch for AC output
- ▶ Push button switch for HWDC output
- ▶ Push button switch for mag

Momentary - mag as long as button is pushed

- ▶ Push button switch for demag
*One touch auto cycle
Switches to decaying AC automatically*
- ▶ Push button switch for pulse
1/2 second on, 3 seconds off for 30 seconds
- ▶ Infinitely variable current control

- ▶ 2 Fixed / 2 Swivel (with locks) Heavy-duty casters
- ▶ 115 Volt convenience Outlet (10 amp)
- ▶ PLC circuitry and thermal overload for circuitry protection
- ▶ Flow through cooling for heat dissipation
- ▶ Solid state switching (AC to HWDC)
- ▶ 7% Duty cycle (maximum output with 1/2 minute ON time)

MAGNAFLUX WET BENCH



AD-Series Magnetic Wet Benches w/ AC and DC Magnetization

The AD-Series magnetic benches provide 4,000 amps of Alternating Current and 5,000 amps of Direct Current magnetization for finding surface and sub-surface defects during wet method magnetic particle inspection. The two outputs are independently adjustable to set each magnetic field, circular or longitudinal.

Features:

- ▶ 5% duty cycle of 0.5 seconds on, 10 seconds off at maximum output
- ▶ Allen-Bradley PLC
- ▶ Simple touch-screen operator interface
- ▶ External pump system for particle bath agitation, circulation and application



MD-Series Multi-Directional Magnetic Wet Benches for AC, HWDC or 1-Phase FWDC Magnetization

The MD-Series multi-directional magnetic bench offers Alternating Current, Half Wave Direct Current and 1-phase Full Wave Direct Current for time-saving multidirectional magnetization which can find defects in all orientations with one mag-cycle.

The two outputs (contact and Flux Flow coil) each offer AC, HWDC or 1-Phase FWDC, and are independently adjustable to balance the magnet field intensity.

Features:

- ▶ 5% duty cycle of 0.5 seconds on, 10 seconds off at maximum output
- ▶ Allen-Bradley PLC
- ▶ Advanced touch-screen operator interface
- ▶ External pump system for particle bath agitation, circulation and application
- ▶ 1,000 customer-programmable techniques

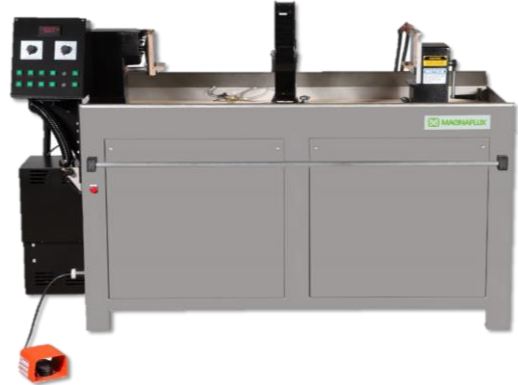


A-Series Magnetic Wet Benches w/ AC Magnetization

The A-Series magnetic benches provide Alternating Current magnetization for finding surface defects during wet method magnetic particle inspection. The two outputs are independently adjustable to set each magnetic field, circular or longitudinal.

Features:

- ▶ 5% duty cycle of 0.5 seconds on, 10 seconds off at maximum output
- ▶ Allen-Bradley PLC
- ▶ Simple touch-screen operator interface
- ▶ External pump system for particle bath agitation, circulation and application



D-Series Magnetic Wet Benches w/ 3-Phase FWDC Capability

The D-Series is one of our most powerful wet magnetic benches. Providing 3-phase Full Wave Direct Current, this MPI equipment offers maximum magnetization for finding surface and sub-surface defects with clearer indications while using minimal power.

The two outputs are independently adjustable to set each magnetic field, circular or longitudinal.

Features:

- ▶ Allen-Bradley PLC
- ▶ Simple touch-screen operator interface
- ▶ External pump system for particle bath agitation, circulation and application
- ▶ Integrated ultra-low frequency, reversing, step-down DC demagnetization 1-touch control



Universal WE Multi-Directional Magnetic Wet Bench

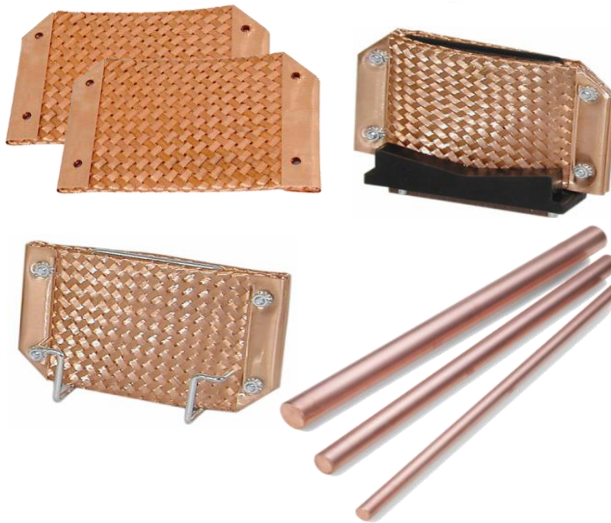
The Universal WE magnetic wet bench is multi-direction magnetic wet bench designed to completely magnetize the surface of parts up to 35 inches long in a single shot. Potentially cutting inspection time in half because the part can be inspected in both directions at once. The Universal WE offers 200 - 2,000 Amps AC for contact shots and 1,500 - 15,000 Amp-turns AC for coil shots. The two outputs are independently adjustable to set each magnetic field, circular or longitudinal.

EQUIPMENT ACCESSORIES

4/0 Cables & Connectors

We offer a range of cables and connectors to allow you to outfit your magnetic bench or electromagnetic current generator to suit your specific parts and process. Whether you are testing a large investment casting or doing mag particle inspection in a difficult to reach location, these heavy-duty cables and connectors will help you set-up your MPI machine just the way you need.

4/0 cables are essential for P-series, M-series, and CSV-series power packs. Cables can be used to flow magnetizing current through a large part or structure, or wrapped around pipes and long weldments for longitudinal magnetization. QED 4/0 cables are available in standard welding grade or heavy-duty grade with extra insulation and tinned conductors. Cables are factory terminated in a variety of lengths and a choice of standard lug connections or heavy-duty quick connect fittings.



Prods & Clamps

These handheld electrodes and contact clamps are convenient for conducting sectional magnetic particle inspections, like welds, castings or forgings, or testing parts that cannot be inspected on a wet horizontal bench, such as large fabrications, tubing, bars and tubular assemblies like aircraft mounts and fuselage sections.

Copper Contact Pads & Conductors

Copper contact pads come in a variety of shapes, sizes and types to make sure your magnetic bench is outfitted correctly for the parts you inspect.

Copper braided contact pads prevent arc burn by helping maintain proper electrical contact between test parts and contact heads. Choose a solid pad if you are inspecting parts with flat ends, pick a braided pad if your parts have rounded or irregular shaped ends.

Central Conductors - Solid Copper Bar Rods provide circular magnetization of hollow parts. Three standard sizes are available and custom sizes are available upon request.

Available Copper Contact Pads Include:

- ▶ Replacement Copper Braid Contact Pad - 4.75" x 7.50"
- ▶ Copper Braid Contact Pad - 4.75" x 10.50"
- ▶ Copper Double-Braided Contact Pad with V-Block. Heavy braid provides contact over greater surface area. Built with neoprene, the V-Block base centers and supports test parts. The pad can be reversed to provide two wear faces. Fits all standard sized MPI units.
- ▶ Copper Double-Braided Contact Pad with Clip. Same performance as the V-Block but clips over headstock of smaller MPI units.

Lead Contact Pads

This range of copper and lead contact pads come in a variety of shapes, sizes and types to make sure your magnetic bench is outfitted correctly for the parts you inspect. Contact pads prevent arc burning, and ensure good, reliable electrical contact between the headstock and part.

Choose a solid pad if you are inspecting parts with flat ends, pick a braided pad if your parts have rounded or irregular shaped ends.

Available Lead Contact Pads Include:

- ▶ Lead Contact Plate - Duplicates original headstock/tailstock contact plates. The soft lead provides excellent contact with test part - 6.75" x 6.625" x .25" Thick
- ▶ Lead Copper Braid Contact Plate - Copper impregnated lead contact plate that lasts 10 times longer than lead contact plates - 6.75" x 6.625" x .25" Thick

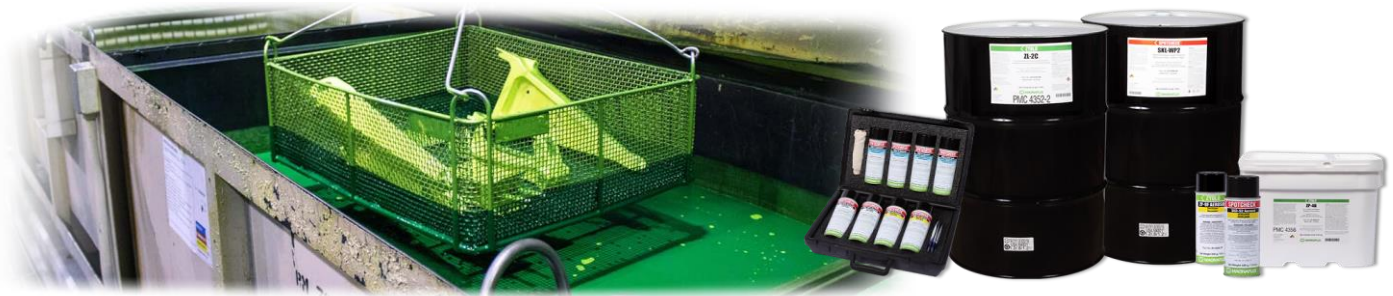


Equipment Adapters

Make sure your MPI bench works with every part you need to inspect with this range of equipment adapters. From large, heavy parts to small pieces like bolts, screws, and pins, QED equipment adapters help you get more out of your magnetic bench by helping you make it work for a wide variety of parts.

- ▶ Steady Rests - Used to support and stabilize long or heavy parts such as crankshafts during the inspection process.
- ▶ Contact Block - Permits remote testing of parts that are too heavy or too large for processing on unit. When clamped between head and tailstock, the block supplies magnetizing current to remote prods or clamps through flexible cable.
- ▶ Small Parts Adapters - Permit the use of standard wet horizontal test units for inspection of small parts such as bolts, screws, pins, etc. Mounted directly to either the head or tail stock the solid copper adaptors maintain adequate clearance to proper clamping action.

LIQUID PENETRANT LPI CONSUMABLES



ZYGLO® PENETRANTS

Fluorescent Penetrant - Type 1

Methods A (Water Washable) & Method C (Solvent Removable)

Item	Product	Sensitivity	Container Size
01-3159-40	ZL-15B	Level ½ (Ultra Low)	5 Gallon Pail
01-3159-30			20 Gallon Drum
01-3159-45			55 Gallon Drum
01-3263-40	ZL-19	Level 1 (Low)	5 Gallon Pail
01-3263-45			55 Gallon Drum
01-3272-78	ZL-60D	Level 2 (Medium)	Aerosol, Case of 12
01-3272-40			5 Gallon Pail
01-3272-30			20 Gallon Drum
01-3272-45			55 Gallon Drum
01-3274-40	ZL-67	Level 3 (High)	5 Gallon Pail
01-3274-30			20 Gallon Drum
01-3274-45			55 Gallon Drum
01-3267-40	ZL-56	Level 4 (Ultra High)	5 Gallon Pail
01-3267-45			55 Gallon Drum



Fluorescent Penetrant - Type 1

*Method B (Post-Emulsifiable, Lipophilic), Method C (Solvent)
Method D (Post-Emulsifiable, Hydrophilic)*

Item	Product	Sensitivity	Container Size
01-3123-40	ZL-2C	Level 2 (Medium)	5 Gallon Pail
01-3123-45			55 Gallon Drum
01-3187-78	ZL-27A	Level 3 (High)	Aerosol, Case of 12
01-3187-40			5 Gallon Pail
01-3187-30			20 Gallon Drum
01-3187-45			55 Gallon Drum
01-3188-78	ZL-37	Level 4 (Ultra High)	Aerosol, Case of 12
01-3188-40			5 Gallon Pail
01-3188-30			20 Gallon Drum
01-3188-45			55 Gallon Drum



Fluorescent Penetrant (Water-Based) - Type 1

Methods A (Water Washable)

No petroleum distillates allowing direct drain disposal

Item	Product	Sensitivity	Container Size
01-3137-40	ZL-4C	N/A	5 Gallon Pail
01-3137-45			55 Gallon Drum
01-3405-45	ZL-405	Level ½ (Ultra Low)	55 Gallon Drum
01-3405-67			275 Gallon Tote
01-3425-45	ZL-425	Level 1 (Low)	55 Gallon Drum
01-3425-67			275 Gallon Tote
01-3440-45	ZL-440	Level 2 (Medium)	55 Gallon Drum
01-3440-67			275 Gallon Tote



SPOTCHECK® PENETRANTS



Visible Penetrant - Type 2



Item	Product	Method	Container Size
01-5155-78	SKL-SP2	<i>C (Solvent Removable)</i>	Aerosol, Case of 12
01-5155-35			1 Gallon Pail
01-5155-40			5 Gallon Pail
01-5155-45			55 Gallon Drum
01-5190-78	SKL-WP2	<i>A (Water Washable)</i>	Aerosol, Case of 12
01-5190-35			1 Gallon Pail
01-5190-40			5 Gallon Pail
01-5190-45			55 Gallon Drum

Visible/Fluorescent Penetrant (Water-Based) Specially designed for chemically sensitive plastic parts

Item	Product	Method	Container Size
01-5125-40	SKL-4C	<i>A (Water Washable)</i>	5 Gallon Pail
01-5125-45		<i>C (Solvent Removable)</i>	55 Gallon Drum



Remover & Emulsifiers



Item	Product	Method / Class	Container Size
01-5750-78	SKC-S	<i>Class 2</i>	Aerosol, Case of 12
01-5750-35			1 Gallon Pail
01-5750-40			5 Gallon Pail
01-5750-45			55 Gallon Drum
01-3550-40	ZE-4E	<i>B</i> <i>(Post-Emulsifiable Lipophilic)</i>	5 Gallon Pail
01-3550-30			20 Gallon Drum
01-3550-45			55 Gallon Drum
01-3625-40	ZR-10E	<i>D</i> <i>(Post-Emulsifiable Hydrophilic)</i>	5 Gallon Pail
01-3625-30			20 Gallon Drum
01-3625-45			55 Gallon Drum

Developer

Item	Product	Form	Container Size
01-3381-75	ZP-4D	<i>Form a</i> <i>(Dry Powder)</i>	10 lb. Pail
01-3381-89		50 lb. Pail	
01-3381-75	ZP-14A	<i>Form b</i> <i>(Water Soluble)</i>	20 lb. Pail
01-3381-89		50 lb. Pail	
01-3341-81	ZP-5B	<i>Form c</i> <i>(Water Suspensible)</i>	25 lb. Pail
01-3354-78	ZP-9F	<i>Form d/e</i> <i>(Nonaqueous Type 1 & 2 - Solvent based)</i>	Aerosol, Case of 12
01-5352-78	SKD-S2	<i>Form d/e</i> <i>(Nonaqueous Type 1 & 2 - Solvent based)</i>	Aerosol, Case of 12
01-5352-35			1 Gallon Pail
01-5352-40			5 Gallon Pail
01-5352-45			55 Gallon Drum



Fluorescent Penetrant - Type 1
Methods A (Water Washable) & Method C (Solvent Removable)



Item	Product	Sensitivity	Container Size
M-FP-921-1p			1 Pint
M-FP-921-01	FP-921	Level 1 (Low)	1 Gallon Pail
M-FP-921-05			5 Gallon Pail
M-FP-921-55			55 Gallon Drum
M-FP-922-1p			1 Pint
M-FP-922-01	FP-922	Level 2 (Medium)	1 Gallon Pail
M-FP-922-05			5 Gallon Pail
M-FP-922-55			55 Gallon Drum
M-FP-923-16			Aerosol, Case of 12
M-FP-923-1p	FP-923	Level 3 (High)	1 Pint
M-FP-923-01			1 Gallon Pail
M-FP-923-05			5 Gallon Pail
M-FP-923-55			55 Gallon Drum

Fluorescent Penetrant - Type 1
Method B (Post-Emulsifiable, Lipophilic), Method C (Solvent Removable)
Method D (Post-Emulsifiable, Hydrophilic)

Item	Product	Sensitivity	Container Size
M-FP-93A(M)-1pt	FP-93A(M)	Level 2 (Medium)	1 Pint
M-FP-93A(M)-01			1 Gallon Pail
M-FP-93A(M)-05			5 Gallon Pail
M-FP-93A(M)-55			55 Gallon Drum
M-FP-95A(M)-16	FP-95A(M)	Level 3 (High)	Aerosol, Case of 12
M-FP-95A(M)-1pt			1 Pint
M-FP-95A(M)-01			1 Gallon Pail
M-FP-95A(M)-05			5 Gallon Pail
M-FP-95A(M)-55	55 Gallon Drum		
M-FP-97A(M)-1pt	FP-97A(M)	Level 4 (Ultra High)	1 Pint
M-FP-97A(M)-01			1 Gallon Pail
M-FP-97A(M)-05			5 Gallon Pail
M-FP-97A(M)-55			55 Gallon Drum



Visible Penetrant - Type 2



Item	Product	Method	Container Size
M-VP-30-16	VP-30	A (Water Washable) C (Solvent Removable)	Aerosol, Case of 12
M-VP-30-1p			1 Pint
M-VP-30-01			1 Gallon Pail
M-VP-30-14			Case, 4-1 Gallon
M-VP-30-05			5 Gallon Pail
M-VP-30-55			55 Gallon Drum
M-VP-31A-16	VP-31A	B (Post-Emulsifiable, Lipophilic) C (Solvent Removable)	Aerosol, Case of 12
M-VP-31A-1p			1 Pint
M-VP-31A-01			1 Gallon Pail
M-VP-31A-14			Case, 4-1 Gallon
M-VP-31A-05			5 Gallon Pail
M-VP-31A-55			55 Gallon Drum

Visible Penetrant (Bio Degradable) - Type 2

Item	Product	Method	Container Size
M-VBP-300-1p	VBP-300	A (Water Washable) C (Solvent Removable)	1 Pint
M-VBP-300-01			1 Gallon Pail
M-VBP-300-05			5 Gallon Pail
M-VBP-300-55			55 Gallon Drum





Visible High (125° - 350° F) Temperature Penetrant - Type 2

Item	Product	Method	Container Size
M-VP-302-1p			1 Pint
M-VP-302-01	VP-302	<i>C (Solvent Removable)</i>	1 Gallon Pail
M-VP-302-05			5 Gallon Pail

Emulsifiers

Item	Product	Type	Method	Container Size
M-E-50-01			<i>B</i>	1 Gallon Pail
M-E-50-05	E-50	2 (Visible)	<i>(Post-Emulsifiable Lipophilic)</i>	5 Gallon Drum
M-E-50-55				55 Gallon Drum
M-E-57-05	E-57	1 (Fluorescent)	<i>B (Post-Emulsifiable Lipophilic)</i>	5 Gallon Drum
M-E-57-55				55 Gallon Drum
M-E-58D-01			<i>D</i>	1 Gallon Pail
M-E-58D-05	E-58D	1 (Fluorescent)	<i>(Post-Emulsifiable Hydrophilic)</i>	5 Gallon Drum
M-E-58D-55				55 Gallon Drum



Cleaners & Removers

Item	Product	Type	Method	Class	Container Size
M-E-59-16					Aerosol, Case of 12
M-E-59-01	E-59	1 (Fluorescent)	<i>C</i>	2	1 Gallon Pail
M-E-59-14	<i>Remover Only</i>	2 (Visible)	<i>(Solvent Removable)</i>	Nonhalogenated (flammable)	Case, 4-1 Gallon
M-E-59-05					5 Gallon Drum
M-E-59-55					55 Gallon Drum
M-E-59A-16					Aerosol, Case of 12
M-E-59A-01	E-59A	1 (Fluorescent)	<i>C</i>	2	1 Gallon Pail
M-E-59A-14	<i>Cleaner & Remover</i>	2 (Visible)	<i>(Solvent Removable)</i>	Nonhalogenated (flammable)	Case, 4-1 Gallon
M-E-59A-05					5 Gallon Drum
M-E-59A-55					55 Gallon Drum
M-R-502-1p	R-502		<i>C</i>	3	1 Pint
M-R-502-01	<i>High Temperature Remover</i>	2 (Visible)	<i>(Solvent Removable)</i>	Special Application	1 Gallon Pail
M-R-502-05					5 Gallon Drum
M-R-503-16					Aerosol, Case of 12
M-R-503-01	R-503	1 (Fluorescent)	<i>C</i>	2	1 Gallon Pail
M-R-503-14	<i>Cleaner & Remover (Petroleum Free)</i>	2 (Visible)	<i>(Solvent Removable)</i>	Nonhalogenated (flammable)	Case, 4-1 Gallon
M-R-503-05					5 Gallon Drum
M-R-503-55					55 Gallon Drum
M-R-504-16					Aerosol, Case of 12
M-R-504-01	R-504	1 (Fluorescent)	<i>C</i>	2	1 Gallon Pail
M-R-504-14	<i>Cleaner & Remover (Non Halogenated)</i>	2 (Visible)	<i>(Solvent Removable)</i>	Nonhalogenated (flammable)	Case, 4-1 Gallon
M-R-504-05					5 Gallon Drum
M-R-504-55					55 Gallon Drum

Developer

Item	Product	Form	Container Size
M-D-72A-1p		<i>Form a</i>	1 Pint
M-D-72A-10	D-72A	<i>(Dry Powder)</i>	10 lb. Pail
M-D-72A-25			25 lb. Pail
M-D-76B-10		<i>Form b</i>	10 lb. Pail
M-D-76B-25	D-76B	<i>(Water Soluble)</i>	25 lb. Pail
M-D-76B-50			50 lb. Pail
M-D-78B-10		<i>Form c</i>	10 lb. Pail
M-D-78B-25	D-78B	<i>(Water Suspensible)</i>	25 lb. Pail
M-D-78B-50			50 lb. Pail
M-D-70-16			Aerosol, Case of 12
M-D-70-01		<i>Form d/e</i>	1 Gallon Pail
M-D-70-14	D-70	<i>(Nonaqueous Type 1 & 2 - Solvent based)</i>	Case, 4-1 Gallon
M-D-70-05			5 Gallon Pail
M-D-70-55			55 Gallon Drum
M-D-702-1p		<i>Form f</i>	1 Pint
M-D-702-01	D-702	<i>(Special Application)</i>	1 Gallon Pail
M-D-702-05			5 Gallon Pail



Fluorescent Penetrant - Type 1 Level ½ (Ultra Low) thru Level 2 (Medium)
Methods A (Water Washable) & Method C (Solvent Removable)

Item	Product	Sensitivity	Container Size
HM-1-1 HM-1-5 HM-1-55	HM-1	Level ½ (Ultra Low)	1 Gallon Can 5 Gallon Pail 55 Gallon Drum
HM-2D-1 HM-2D-5 HM-2D-55	HM-2D	Level 1 (Low)	1 Gallon Can 5 Gallon Pail 55 Gallon Drum
HM-220-1 HM-220-5 HM-220-55	HM-220	Level 1 (Low)	1 Gallon Can 5 Gallon Pail 55 Gallon Drum
HM-3A-1 HM-3A-5 HM-3A-55	HM-3A	Level 2 (Medium)	1 Gallon Can 5 Gallon Pail 55 Gallon Drum
HM-406-16 HM-406-1 HM-406-5 HM-406-55	HM-406	Level 2 (Medium)	Aerosol, Case of 9 1 Gallon Can 5 Gallon Pail 55 Gallon Drum
HM-412-1 HM-412-5 HM-412-55	HM-412	Level 2 (Medium)	1 Gallon Can 5 Gallon Pail 55 Gallon Drum
HM-440-1 HM-440-5 HM-440-55	HM-440	Level 2 (Medium)	1 Gallon Can 5 Gallon Pail 55 Gallon Drum



Fluorescent Penetrant - Type 1 Level 3 (High) thru Level 4 (Ultra High)
Methods A (Water Washable) & Method C (Solvent Removable)

Item	Product	Sensitivity	Container Size
HM-430-1 HM-430-5 HM-430-55	HM-430	Level 3 (High)	1 Gallon Can 5 Gallon Pail 55 Gallon Drum
HM-604-1 HM-604-5 HM-604-55	HM-604	Level 3 (High)	1 Gallon Can 5 Gallon Pail 55 Gallon Drum
HM-607-1 HM-607-5 HM-607-55	HM-607	Level 3 (High)	1 Gallon Can 5 Gallon Pail 55 Gallon Drum
HM-704-1 HM-704-5 HM-704-55	HM-704	Level 4 (Ultra High)	1 Gallon Can 5 Gallon Pail 55 Gallon Drum
HM-707-1 HM-707-5 HM-707-55	HM-707	Level 4 (Ultra High)	1 Gallon Can 5 Gallon Pail 55 Gallon Drum

Fluorescent Penetrant - Type 1
Method B (Post-Emulsifiable, Lipophilic), Method C (Solvent Removable) & Method D (Post-Emulsifiable, Hydrophilic)

Item	Product	Sensitivity	Container Size
RC-29-1 RC-29-5 RC-29-55	RC-29	Level 1 (Low)	1 Gallon Can 5 Gallon Pail 55 Gallon Drum
FP-22B-1 FP-22B-5 FP-22B-55	FP-22B	Level 2 (Medium)	1 Gallon Can 5 Gallon Pail 55 Gallon Drum
RC-50-1 RC-50-5 RC-50-55	RC-50	Level 2 (Medium)	1 Gallon Can 5 Gallon Pail 55 Gallon Drum
RC-65-16 RC-65-1 RC-65-5 RC-65-55	RC-65	Level 3 (High)	Aerosol, Case of 9 1 Gallon Can 5 Gallon Pail 55 Gallon Drum
RC-77-16 RC-77-1 RC-77-5 RC-77-55	RC-77	Level 4 (Ultra High)	Aerosol, Case of 9 1 Gallon Can 5 Gallon Pail 55 Gallon Drum
RC-88-1 RC-88-5 RC-88-55	RC-88	Level 4 (Ultra High)	1 Gallon Can 5 Gallon Pail 55 Gallon Drum





Visible Penetrant - Type 2

Item	Product	Method	Container Size
DP-40-16	DP-40	<i>C (Solvent Removable)</i>	Aerosol, Case of 9
DP-40-1			1 Gallon Can
DP-40-5			5 Gallon Pail
DP-40-55			55 Gallon Drum
DP-50-16	DP-50	<i>A (Water Washable)</i> <i>C (Solvent Removable)</i>	Aerosol, Case of 9
DP-50-1			1 Gallon Can
DP-50-5			5 Gallon Pail
DP-50-55			55 Gallon Drum
DP-51-16	DP-51	<i>A (Water Washable)</i> <i>C (Solvent Removable)</i>	Aerosol, Case of 9
DP-51-1			1 Gallon Can
DP-51-5			5 Gallon Pail
DP-51-55			55 Gallon Drum
DP-54-1	DP-54	<i>A (Water Washable)</i> <i>C (Solvent Removable)</i>	1 Gallon Can
DP-54-5			5 Gallon Pail
DP-54-55			55 Gallon Drum
KO-17-16	KO-17	<i>A (Water Washable)</i> <i>C (Solvent Removable)</i>	Aerosol, Case of 9
KO-17-1			1 Gallon Can
KO-17-5			5 Gallon Pail

Removers/ Cleaners

Item	Product	Method / Class	Container Size
DR-60-16	DR-60	<i>Class 2</i> <i>Nonhalogenated</i> <i>(Flammable)</i>	Aerosol, Case of 9
DR-60-1			1 Gallon Can
DR-60-5			5 Gallon Pail
DR-60-55			55 Gallon Drum
DR-62-16	DR-62	<i>Class 2</i> <i>Nonhalogenated</i> <i>(Flammable)</i>	Aerosol, Case of 9
DR-62-1			1 Gallon Can
DR-62-5			5 Gallon Pail
DR-62-55			55 Gallon Drum
DR-63-1	DR-63	<i>Class 2</i> <i>Nonhalogenated</i> <i>(Flammable)</i>	1 Gallon Can
DR-63-5			5 Gallon Pail
DR-63-55			55 Gallon Drum
DR-64-1			DR-64
DR-64-5	5 Gallon Pail		
KO-19-16	KO-19	<i>Class 2</i> <i>Nonhalogenated</i> <i>(Flammable)</i>	Aerosol, Case of 9
KO-19-1			1 Gallon Can
KO-19-5			5 Gallon Pail



Emulsifiers

Item	Product	Method / Class	Container Size
ER-85-1	ER-85	<i>B</i> <i>(Post-Emulsifiable)</i> <i>Lipophilic)</i>	1 Gallon Can
ER-85-5			5 Gallon Pail
ER-85-55			55 Gallon Drum
ER-83A-1	ER-83A	<i>D</i> <i>(Post-Emulsifiable)</i> <i>Hydrophilic)</i>	1 Gallon Can
ER-83A-5			5 Gallon Pail
ER-83A-55			55 Gallon Drum
ER-83B-1	ER-83B	<i>D</i> <i>(Post-Emulsifiable)</i> <i>Hydrophilic)</i>	1 Gallon Can
ER-83B-5			5 Gallon Pail
ER-83B-55			55 Gallon Drum
ER-83C-1	ER-83C	<i>D</i> <i>(Post-Emulsifiable)</i> <i>Hydrophilic)</i>	1 Gallon Can
ER-83C-5			5 Gallon Pail
ER-83C-55			55 Gallon Drum



Developer

Item	Product	Form	Container Size
D-90G-15	D-90G	<i>Form a</i> <i>(Dry Powder)</i>	15 lb. Pail
D-113G.1-25	D-113G.1	<i>Form b</i> <i>(Water Soluble)</i>	25 lb. Pail
D-110A.1-25	D-110A.1	<i>Form c</i> <i>(Water Suspensible)</i>	25 lb. Pail
D-100-16	D-100	<i>Form d/e</i> <i>(Nonaqueous Type 1 & 2 -</i> <i>Solvent based)</i>	Aerosol, Case of 9
D-100-1			1 Gallon Can
D-100-5			5 Gallon Pail
D-100-55			55 Gallon Drum
D-106-16	D-106	<i>Form d/e</i> <i>(Nonaqueous Type 1 & 2 -</i> <i>Solvent based)</i>	Aerosol, Case of 9
D-106-1			1 Gallon Can
D-106-5			5 Gallon Pail
D-106-55			55 Gallon Drum
D-350-16	D-350	<i>Form d/e</i> <i>(Nonaqueous Type 2 -</i> <i>Solvent based)</i>	Aerosol, Case of 9
D-350-1			1 Gallon Can
D-350-5			5 Gallon Pail



LPI ACCESSORIES

MATERIAL ACCESSORIES

LPI Applicators & Sprayers

► DEMA Injector Kit - For spraying Hydrophilic Emulsifier. The emulsifier is drawn into the water stream by the Dema valve, emitting an emulsifier/water spray. The Dema Injector allows the penetrant user to process parts with the Hydrophilic method without adding large dip tanks.

Item	Description
625773	Model M 24 oz. Capacity Black Anodized Aluminum Sprayer w/ Nozzle #602, Adjustable from Extra Fine Mist to Pin Stream
SP*001693	Dry Developer Sprayer, One Quart Capacity
SP*001694	NDT Rinse/Spray Gun Complete
520090	Magnaflux Water Spray Gun w/ Hose Adapter
SP*001695	244CT DEMA Injector Kit - for emitting an Hydrophilic Emulsifier/Water Spray



Monitoring Devices & Wiping Cloths

► Refractometer - Easy to use device to measure the concentration of the Hydrophilic Emulsifier remover in water and is required to meet Pratt and Whitney and GE concentration specifications for Hydrophilic removers.

► Hydrometer - Water Based Developers are designed for optimum performance within a specific concentration range. To control the concentration, the specific gravity is measured using the Hydrometer. If the reading is high, the concentration is high and water is generally added. If the reading is low, developer is added to the bath.

Item	Description
300	GRALAB Model 300 Timer
513829	Refractometer
5857	Hydrometer (for monitoring developer concentration)
RAGS-50	White Lint Free Rags, 50 lb. Box



TAM PANEL & CLEANING UNIT

Hoffman Precision Star TAM Panels

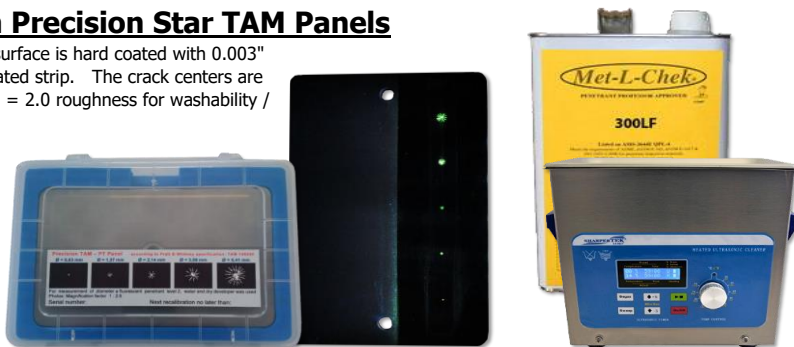
The Panel is made from a 0.100" stainless steel plate. Half of the test surface is hard coated with 0.003" hard alloy chrome. Five crack centers are evenly spaced in the hard coated strip. The crack centers are circular patterns forming a star. The un-plated side is grit blasted to Ra = 2.0 roughness for washability / background tests.

Kit Includes:

- Hoffman TAM Panel with Transparent Storage Box
- Calibration Certificate (includes measurements and 5 photos)
- Foil print, glued on the storage box (includes measurements and 5 photos)

TAM Panel Approvals:

- Pratt & Whitney TAM 146060
- Delta Air Lines / MTU Maintenance
- Rolls Royce / General Electric



Item	Description
SP*001637	Hoffmann Polished Precision TAM Panel Standard Kit
SP*001638	Hoffmann Polished Precision TAM Panel Standard Kit plus full size panel photo in Certificate
SP*001639	Hoffmann Grit Precision TAM Panel Standard Kit
SP*001640	Hoffmann Grit Precision TAM Panel Standard Kit plus full size panel photo in Certificate

Ultrasonic Cleaning Unit & Solution

Quickly and professionally clean your test panels with the desktop ultrasonic cleaning unit. It completely removes excess penetrant from indications as well as the surface of the panel. We recommend using Met-L-Chek 300LF or equivalent for proper cleaning.

Includes: Normal Frequency, Sweep & Degas Functions, Operator Temperature Controls, Digital Ultrasonic Timer, Basket, Cover and Side Handles

Specifications: Ultrasonic Frequency - 40,000Hz, Tank Material - Stainless Steel, Temperature Controlled Heat for best cleaning performance, Unit Size - 10" L x 6"W x 9.5"H, Tank Dimensions - 9"L x 5.5"W x 4"H, Tank Capacity - 3/4 Gallon

Item	Description
SP*001696	Heated Ultrasonic Cleaning Unit
M-300LF-01	Met-L-Chek 300LF Aqueous Alkaline Concentrate, 1 Gallon Pail

ADDITIONAL LPI PANELS/BLOCKS

NiCr Twin Cracked Test Panels

NiCr Panels are used to compare new and used penetrants and can also be used for comparing performance of different penetrant materials or different processing techniques. Each set consists of a pair of identical panels marked A and B with manufacturer's Certification and Crack photograph.

These panels are made by plating hard Nickel Chromium alloy on a 2mm thick brass substrate and stressing the panel in tension. The hard NiCr coating is brittle in comparison to the brass substrate so that the cracks created in the plated layer are limited to the thickness of the NiCr layer. The panel is then cut in half perpendicular to the direction of the cracks thus creating a matching pair of virtually identical cracks of controlled depth.

Specification Compliance: ASTM E1417, AMS 2647D, ISO 3452-3 & JIS Z 2343-3



Sensitivity* (Unofficial)		<ul style="list-style-type: none"> Fluorescent Penetrant Sensitivity Levels are established by the USAF Laboratory at Wright Patterson AFB under highly controlled conditions. Sensitivity testing is not something the penetrant manufacturer or user can do. What you can do is compare samples using appropriate NiCr Cracked Panels.
Crack Depth	Level	
50 µm	1, 2, 3, 4	
30 µm	2, 3, 4	
20 µm	3, 4	
10 µm	4	

Item	Description
NiCr-10	NiCr Test Panels, 10µm (0.0004") Flaw Depth
NiCr-20	NiCr Test Panels, 20µm (0.0008") Flaw Depth
NiCr-30	NiCr Test Panels, 30µm (0.0012") Flaw Depth
NiCr-50	NiCr Test Panels, 50µm (0.002") Flaw Depth

Additional LPI Test Panels & Blocks

- ▶ WTP-1 SHERWIN Wash Test Panel is used to run monthly removability testing as required by ASTM E1417 and MIL-STD-6866. The panel is made of stainless steel measuring 4" x 6" and 0.090" thick with two parallel, "medium rough" strips, each 6" x 1.5" separated by a smooth 1" strip.
- ▶ WTP-2 SHERWIN Wash Test Panel is used to run removability tests. The 1.5" x 2" panel is made from 16 gauge 301 or 302 stainless steel, by grit blasting with 80 mesh aluminum oxide grit and 60 psi of air pressure. The roughened surface that is produced is free of scratches and blemishes.
- ▶ ADP-1 SHERWIN Aqueous Developer Test Panel is used to check the fluorescence and coverage of soluble and suspendable aqueous developers as per ASTM E1417. The panel is made of aluminum measuring 3" x 10".
- ▶ Cracked Aluminum Test Blocks compare sensitivity of different penetrants or sensitivity of new and used penetrants. This is done by processing one half of the block with used penetrant and the other half with fresh penetrant. A 1/8" wide groove separates the blocks two sides to facilitate side-by-side penetrant comparison.

Item	Description
WTP-1	SHERWIN Wash Test Panel (Removability as per ASTM E1417 & MIL-STD-6866)
WTP-2	SHERWIN Wash Test Panel (Removability)
ADP-1	SHERWIN Aqueous Developer Test Panel (as per ASTM E1417)
CAB	Cracked Aluminum Test Block

**Cracked Aluminum Test Blocks are meant for one-time use as once the penetrant gets in the crack it is very difficult to completely clean.*

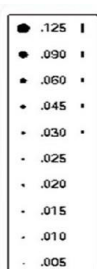


LPI MEASURING AIDS

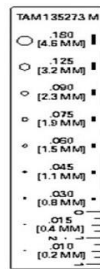
Crack Comparators

Crack comparators are used to measure the actual size of indications identified during the liquid penetrant inspection process.

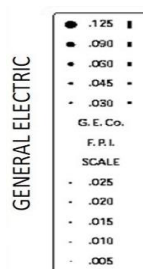
Item	Description
514048	Fluorescent Green General Purpose Crack Comparator, measured in increments 0.005" to 0.125"
514050	Fluorescent Green Pratt & Whitney (TAM 135273) Crack Comparator, measured in increments 0.010" to 0.180"
SP*001697	Fluorescent Green General Electric Crack Comparator, measured in increments 0.005" to 0.125"
SP*001698	Fluorescent Green Fractional Size Crack Comparator, measured from 1/64" to 1/4"
SP*001699	Fluorescent Green Swing Away General Purpose Crack Comparator, measured in increments 0.005" to 0.125"
SP*001481	Fluorescent Green Swing Away (TAM 190466) Crack Comparator, measured in increments 0.005" to 0.180"



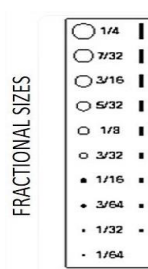
514048



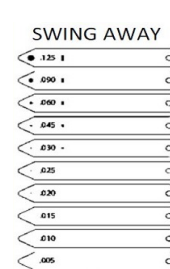
514050



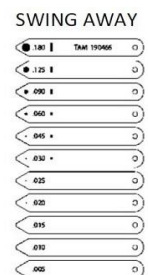
*SP*001697*



*SP*001698*



*SP*001699*



*SP*001481*

BLACKLIGHTS HANDHELD LED UV-A LAMPS

MAGNAFLUX HANDHELD

EV6000 Inspection Lamp

The EV6000 features a large 9 inch (5,000 $\mu\text{W}/\text{cm}^2$), uniform beam without hot spots that is one of the widest in the industry and is certified to NDT standards for LED UV lamps and certified for Aerospace Prime and OEM specifications for emission spectrum and beam profile. Each unit is shipped with a manufacturer's certificate of conformance which meets or exceeds all current specifications for use with fluorescent liquid penetrant and magnetic particle testing.



Item	Description	Compliance	UV Intensity	UV Coverage
625784	EV6000 Hand-Held LED UV lamp	ISO 3059, ASTM E3022 & RRES 90061	5,000 $\mu\text{W}/\text{cm}^2$	Ø 9 Inches



UVISION 365 Series Inspection Lamps

The Uvision 365 SERIES is Spectroline's innovative line of compact, broad-beam NDT handheld lamps. These lightweight yet rugged lamps boast an IP65 rating – they are dust-tight and water resistant. Using a state-of-the-art heat sink design, the uVision™ is mechanically cooled without the need for a fan. In addition to three powerful UV-A (365 nm) LEDs, it has a convenient white light LED for illuminating work areas. Compliant versions have embedded microprocessors to keep lamps within specifications.

What's included

Mains Model - Comes complete Uvision 365 LED UV-A Lamp, in-line AC power supply, UV-absorbing spectacles, and padded protective case.

Battery Model - Comes complete Uvision 365 LED UV-A Lamp with in-handle lithium battery, in-line AC charger and cord, UV-absorbing spectacles, and padded protective case.



Item	Model	Version	Compliance	UV Intensity	UV Coverage
UV-365HC	DELUXE	HC (AC)	ISO 3059 & ASTM E3022	6,000 $\mu\text{W}/\text{cm}^2$	Ø 6.4 Inches
UV-365ZHC		ZHC (Battery)		8,000 $\mu\text{W}/\text{cm}^2$	Ø 7.5 Inches

**Additional options that comply with Rolls-Royce RRES 90061 are available upon request.*

LABINO HANDHELD

MB 3.0 Series Inspection Lamps

This compact light is simply Genius! A combination of smart mechanics and efficient electronics, designed to survive extreme temperatures and harsh working conditions, 24 x 7. Penetrant resistant, with acoustic battery indicator and certified with an ingress protection marking of IP68. Depending on the model, the beam diameter is 8-9 inches and with intensities that vary from 4,500 to 9,000 $\mu\text{W}/\text{cm}^2$. Zeus and Selene are equipped with a strong white light as well. The AC (mains) operated model weighs just 1.4 lbs and the battery operated model weighs just 1.5 lbs.



2 Year Warranty



Mains AC Version Package Includes:

Lamp with 13 foot cord, Power Supply Unit 100-240V AC, AC power cord, UV Block Glasses and Carrying Case. The cord can be customized to the length of your choice.

Battery Version Package Includes:

Lamp, Car Charger, Four Batteries, UV Block Glasses, External Charger for wall outlet, Carrying Case, Belt holster and Power supply for charging batteries while operating.

Pictured w/ Athena

Item	Model	Version	Compliance	UV Intensity	UV Coverage
L119	ZEUS Built in White Light	AC	ISO 3059, ASTM E3022, RRES 90061, AITM6-1001, Pratt & Whitney & Boeing	4,500 $\mu\text{W}/\text{cm}^2$	Ø 9 Inches
L118		Battery			
L121	HERMES	AC	ISO 3059, ASTM E3022, RRES 90061, AITM6-1001, Pratt & Whitney, Boeing & USAF	9,000 $\mu\text{W}/\text{cm}^2$	Ø 8 Inches
L120		Battery			
L139	SELENE Built in White Light	AC	ISO 3059, ASTM E3022, AITM6-1001 & Pratt & Whitney	9,000 $\mu\text{W}/\text{cm}^2$	Ø 8 Inches
L138		Battery			
L125	ATLAS	AC	ISO 3059, ASTM E3022, AITM6-1001, Pratt & Whitney & USAF	9,000 $\mu\text{W}/\text{cm}^2$	Ø 8 Inches
L124		Battery			

Optional Spray Can Holder Accessory "Athena" (pictured above)

Athena mounts on the light and can fit ALL aerosol brands that are used in NDT. Buy it factory installed or add it later (Item A503).



**Drop it,
Kick it,
Bake it in
an Oven,
Run it over
by a Tank?
It will still
Work!**

HERCULES Ex Inspection Lamp

4 Year Warranty

Designed upon request of the military, Hercules is probably the most durable and shock-proof UV light in the world today, suitable for any "heavy duty" environment. It comes with explosion proof approvals and is tested to comply with ASTM E3022-18 and all PRIMES requirements, including Rolls-Royce RRES 90061 and Airbus AITM6-1001. Accidentally dropped it, kicked it, baked it in an oven, run it over by a tank? – it will still work! – The battery is inside the light; you don't need to worry it got smashed like ordinary lights.

Explosive Atmosphere Certifications

ATEX certified for Group II, Zone II (Certificate: ITS17AT-EX402144X), IECEx, NFPA 70 Article 500 for Class I (divisions II locations), Explosive Atmosphere Test as per MIL-STD-810G.

Operate the Lamp as Mains while Charging Batteries

A separate PSU supplied can charge the batteries. This charger can only be used outside explosive atmospheres.

Four UV LEDs with White Light Block Filters

Four high quality UV LEDs with respective high quality white light block filters that do not suffer from solarization.

Item	Model	Version	Compliance	UV Intensity	UV Coverage
L3000	HERCULES	Battery	ISO 3059, ASTM E3022, RRES 90061, AITM6-1001, Pratt & Whitney, Boeing & USAF	4,000 $\mu\text{W}/\text{cm}^2$	\varnothing 8 Inches



On/Off Switch

On/Off Switch at the back prevents accidental activation.

Battery Powered

Hercules Ex is powered with two rechargeable batteries for ease of use in field inspections and tight work spaces.



Package Includes

Lamp, Car Charger, Four Batteries, UV Block Glasses, External Charger for wall outlet, Carrying Case, Charging Power Supply.



BB 2.0 Series Inspection Lamps



Powerful, penetrant resistant and with an Ingress Protection 68 (IP68 Waterproof). Beam profile is probably the largest and smoothest from any portable UV-A light on the market today. Depending on the model, the beam diameter is 10-11 inches and with intensities that vary from 4,000 to 22,000 $\mu\text{W}/\text{cm}^2$. Selected models have been tested to comply with ASTM E3022-18, Rolls-Royce RRES 90061 and Airbus AITM6-1001. Battery running times are up to 7 hours.

Powered via Battery and AC (DUO) or Just AC

Powered with your choice of either battery and mains or just mains. The battery version (referred to as DUO) can also be used as mains and operate the lamp while charging the battery.

BB 2.0 Battery (DUO) or Mains on a Flexible Arm

All BB 2.0 Series models can be mounted on a flexible arm with the help of a handle adaptor. The flexible arm (PN: A536) can be supplied by QED.

2 Year Warranty

Item	Model	Version	Compliance	UV Intensity	UV Coverage
L1074	IKAROS	AC	ISO 3059, ASTM E3022, RRES 90061, AITM6-1001, Pratt & Whitney & Boeing & USAF	4,000 $\mu\text{W}/\text{cm}^2$	\varnothing 10.6 Inches
L1075		Battery			
L1076	HELIOS	AC	ISO 3059, ASTM E3022, AITM6-1001, Pratt & Whitney & USAF	9,000 $\mu\text{W}/\text{cm}^2$	\varnothing 11 Inches
L1077		Battery			
L1078	ARTEMIS	AC	ISO 3059 & ASTM E3022	22,000 $\mu\text{W}/\text{cm}^2$	\varnothing 10.3 Inches
L1079		Battery			

FLASHLIGHT LED UV-A LAMP

SPECTRO-UV FLASHLIGHT



CLARITY 365 Series Kit



The Clarity 365 SERIES is the highest quality, longest running, COMPLIANT LED UV-A flashlight in the world! The IP68-rating means that it can withstand continuous immersion in one meter of water, making it ideal for rough environments. The 9-hour battery life is enough for a full work shift, making it the longest-running NDT flashlight on the market. Standing up to strict NDT standards, this product provides all of the top features including an induction charging base.

What's included

Lithium-Ion Version Includes - Flashlight w/ battery, induction charging dock, AC power cord, USB power cord, belt holster, UV-absorbing glasses & carrying case

**Additional options are available upon request.*

Item	Model	Version	Compliance	UV Intensity	UV Coverage
SPN-CLR365-SC	STANDARD INTENSITY	SC (Lithium-Ion)	ISO 3059 & ASTM E3022	4,500 $\mu\text{W}/\text{cm}^2$	\varnothing 4 Inches

LABINO FLASHLIGHT / HEADLIGHT

UVG3 2.0 Series Inspection Flashlights

Powerful, penetrant resistant and with an Ingress Protection 68 (Waterproof). The beam profile is probably the largest and smoothest from any UV-A torch light on the market. Depending on the model, the beam diameter is 3-5 inches and with intensities that vary from 4,000 to 80,000 $\mu\text{W}/\text{cm}^2$! Battery running times are up to 8 hours.

One UV LED with White Light Block Filter

A high quality UV LED with respective high quality white light block filter that does not suffer from solarization.

UVG3 2.0 Single Kit Package Includes:

Lamp, Car Charger, Two Batteries, UV Block Glasses, External Charger for wall outlet, carrying case, belt holsters, wrist band, rubber bumper.



2 Year Warranty

Item	Model	Compliance	UV Intensity	UV Coverage	Battery Run Time
L134	Spotlight	ISO 3059 & ASTM E3022	80,000 $\mu\text{W}/\text{cm}^2$	\varnothing 3 Inches	4 Hours
L135	Midlight	ISO 3059, ASTM E3022, AITM6-1001, Pratt & Whitney & USAF	9,000 $\mu\text{W}/\text{cm}^2$	\varnothing 3.8 Inches	8 Hours
L136	Floodlight	ISO 3059, ASTM E3022, RRES 90061, AITM6-1001, Pratt & Whitney & Boeing & USAF	4,000 $\mu\text{W}/\text{cm}^2$	\varnothing 4.8 Inches	4 Hours

UVG5 2.0 Series Inspection Headlight



Extremely durable! Compact, powerful and adjustable headlight that frees your hands during inspections. White light is optional. The beam profile is probably the largest and smoothest from any UV-A headlight on the market today. Depending on the model, the beam diameter is 3-5 inches and with intensities that vary from 4,000 to 80,000 $\mu\text{W}/\text{cm}^2$! Battery running times are up to 14 hours.

Battery Powered

Powered by two lithium batteries that can be recharged either by a cigarette outlet in a vehicle, a wall outlet or a PSU charger (without removing the batteries).

One UV LED with White Light Block Filter and Optional Four White Light LEDs

A high quality UV LED with respective high quality white light block filter that does not suffer from solarization. Two different white lights: (a) a strong "search" white light for use in dark and tight spaces such as pipes and tanks and (b) a visual inspection white light.

3 Year Warranty

Item	Model	Compliance	UV Intensity	UV Coverage	Battery Run Time
L127	Spotlight Built in White Light	ISO 3059 & ASTM E3022	80,000 $\mu\text{W}/\text{cm}^2$	\varnothing 3 Inches	8 Hours
L128 L129	Midlight L128 - Built in White Light	ISO 3059, ASTM E3022, AITM6-1001 & Pratt & Whitney	9,000 $\mu\text{W}/\text{cm}^2$	\varnothing 3.8 Inches	14 Hours
L130 L131	Floodlight L130 - Built in White Light	ISO 3059, ASTM E3022, RRES 90061, AITM6-1001, Pratt & Whitney & Boeing	4,000 $\mu\text{W}/\text{cm}^2$	\varnothing 4.8 Inches	8 Hours

**USAF has a requirement of No White Light and a Maximum Intensity of 10,000 $\mu\text{W}/\text{cm}^2$ making L129 the preferred Lamp.*

OVERHEAD LED UV-A LAMPS

LABINO OVERHEAD

4 Year Warranty

GX ORION Series Modular Overhead UV System

There are three different GX Orion stationary UV LED models (Remote, UV & WH and UV only) producing different intensities and tested to comply with a number of NDT standards. All 3 models come as AC (Mains) powered and are modular devices able to connect as many extension modules as you may require to increase the covered area in your station.

There are two types of what we refer to as "extension" units. The difference of the two is the white light. GX Orion UV & WH Extension unit (PN L3104), is used to extend the coverage of GX Orion UV & WH mother unit or GX Orion REMOTE mother unit. Both these units have white light that emits 1,076 lux (100 fc) at a distance of 12 inches. GX Orion UV Extension unit (PN L3105), is used to extend the coverage of GX Orion UV only as this mother unit does not have a white light.

Key Features

- ▶ Certified with an ingress protection marking of IP68 Waterproof
- ▶ Classified as Penetrant Resistant
- ▶ PLC Interface - All GX Orion units come with a PLC interface that can be used to monitor the UV light from a computerized panel.
- ▶ Tested to comply with ASTM E3022-18, ROLLS-ROYCE RRES 90061 and AIRBUS AITM6-1001
- ▶ Carries a 4-YEAR WARRANTY, the longest in the industry!



Item	Model	Compliance	UV Intensity	UV Coverage
L3100	REMOTE Built in White Light	ISO 3059 & ASTM E3022	1,500 - 7,000 µW/cm²	Ø 13 Inches x 9 Inches
L3101	UV & WH Built in White Light	ISO 3059, ASTM E3022, AITM6-1001 & Pratt & Whitney	7,000 µW/cm²	Ø 13 Inches x 9 Inches
L3102	UV	ISO 3059, ASTM E3022, RRES 90061, AITM6-1001, Pratt & Whitney & Boeing & USAF	4,500 µW/cm²	Ø 10 Inches x 7 Inches
L3104 L3105	EXTENSION	Fits GX ORION REMOTE and GX ORION UV & WH Mother Units Fits GX ORION UV Mother Unit Only		

LIGHT METERS

LABINO, SPECTRO-UV & ECONOMICAL LIGHT METERS

- ▶ LABINO - APOLLO 3.0 Series - Radiometer/photometer measuring UV and visible light via a wireless sensor. Apollo 3.0 is traceable to NIST and is in compliance with ISO 3059. Apollo 3.0 Series Light Meters include a 4 Year Warranty.
- ▶ SPECTRO-UV - AccuPRO Series - Features an advanced, microprocessor-controlled readout unit with a single dual-wavelength sensor detector designed to measure and display both UV-A and Visible Light readings.
- ▶ SPECTRO-UV - AccuMAX Series - Compact, lightweight and battery-operated for convenient use in the factory, field or any other location where measurements need to be taken. Measures both ultraviolet and visible light. Optional Luminance Sensor Detector is available upon request (XS-555/L).

MANUFACTURER	Item	Description	UV Light Sensor Operating Range	White Light Sensor Operating Range
LABINO APOLLO 3.0 Series	M513	Single Kit w/ Carrying Case	0 - 50,000 µW/cm²	0 - 10,000 Lux (930 fc)
	M514	Double Kit (x2 Sensors) w/ Carrying Case		
SPECTRO-UV AccuPRO	XP-2000	Dual Sensor, Complete with Rechargeable "AAA" Batteries, AC Charger and Carrying Case	0 - 100,000 µW/cm²	0 - 5,382 Lux (500 fc)
SPECTRO-UV AccuMAX	XRP-3000	Complete w/ Digital Readout Unit (XR-1000) and Protective Rubber Boot, Dual Sensor (XDS-1000), Water Resistant USB Cable and Carrying Case.		
Economical Off Brand	SP*001477	Digital Illuminance Meter	<i>N/A</i>	0 - 200,000 Lux (20,000 fc)
	SP*001197	Digital UV-A/B Meter	0 - 40,000 µW/cm²	<i>N/A</i>



4 Year Warranty



ULTRASONIC CALIBRATION BLOCKS



REFERENCE STANDARDS

Block Type	Description	Item	Alloy
IIW-Type 1	Used for calibration of shear and longitudinal transducers, and verification of shear wedge exit point and refracted angle. Can also be used for resolution and sensitivity checking. In accordance with: IIW (International Institute of Welding) and ASTM E164.	CI-IIW1.I1018	1018 Steel
		CI-IIW1.ISS	304 Stainless Steel
		CI-IIW1.WC	Wooden Case
IIW-Type 2	A modified version of the original IIW-Type 1 design. Includes a 2.0" radius x 0.250" deep cut-out superposed on the 4.0" radius for distance calibration. Also includes numbers 3, 5 and 8 through holes (3/64", 5/64" AND 8/64" diameter) for sensitivity testing or surface wave inspection, and distance calibration marks to the 2.0" hole. In accordance with International Institute of Welding, ASTM E164 and U.S. Air Force NDI Manual T.O. 33B-1-1 specifications.	CI-IIW2.I1018	1018 Steel
		CI-IIW2.ISS	304 Stainless Steel
		CI-IIW2.WC	Wooden Case
Angle Beam	The Angle Beam Block also known as a "Rompas" block or simply "Angle Beam" is the ASTM and U.S. Air Force substitute for the DSC block for distance, beam index, refracted angle and sensitivity calibration. Block is 1.0" thick, contains a 1.0" radius opposite a 2.0" radius, and a 5/64" diameter x 0.375" deep flat-bottom hole.	CI-AB.ICS	1018 Steel
		CI-AB.ISS	304 Stainless Steel
		CI-AB.WC	Wooden Case
QED 5-Step Block	5-Step Block for thickness and linearity calibration in accordance with ASTM E797. Step Thickness: 0.100", 0.200", 0.300", 0.400", and 0.500"	Q5S-1018	1018 Steel
		Q5S-304	304 Stainless Steel
		SP*001356	Plastic Case
Curtis 5-Step Block	5-Step Block for thickness and linearity calibration in accordance with ASTM E797. Step Thickness: 0.100", 0.200", 0.300", 0.400", and 0.500"	CI-5STEP.I1018	1018 Steel
		CI-5STEP.I304	304 Stainless Steel
		CI-5STEP.WC	Wooden Case
QED 4-Step Block	4-Step Block for thickness and linearity calibration in accordance with ASTM E797. Step Thickness: 0.250", 0.500", 0.750", and 1.000"	Q4S-1018	1018 Steel
		Q4S-304	304 Stainless Steel
		SP*001356	Plastic Case
Curtis 4-Step Block	4-Step Block for thickness and linearity calibration in accordance with ASTM E797. Step Thickness: 0.250", 0.500", 0.750", and 1.000"	CI-4STEP.ICS	1018 Steel
		CI-4STEP.ISS	304 Stainless Steel
		CI-4STEP.WC	Wooden Case
TIPSY	Special Step Block for thickness and linearity calibration. This versatile block contains eight (8) steps. Set it down on one side and get the 1.0, 2.0, 3.0 and 4.0" steps. Then "TIP" it over and get the 1.5, 2.5, 3.5, and 4.5" steps.	CI-TIPSY.ICS	1018 Steel
		CI-TIPSY.ISS	304 Stainless Steel
		CI-TIPSY.WC	Wooden Case
DSC	AWS-type block used for shear wave distance and sensitivity calibration. Contains a 1.0" radius opposite a 3.0" radius. The 3.0" radius includes a 0.375" deep x 0.032" wide radiused slot. Also contains a 0° reference point for checking exit point on wedge, and a 0.125" diameter through hole and corresponding markings at 45°, 60°, and 70° for measuring actual refracted angle. In accordance with ASTM E164 and AWS 6.16.1B.	CI-DSCBLOCK.ICS	1018 Steel
		CI-DSCBLOCK.ISS	304 Stainless Steel
		CI-DSCBLOCK.WC	Wooden Case
NAVSHIP	Used for distance amplitude correction, sensitivity levels and flaw depth information. Contains six 3/64" diameter side-drilled through-holes at distances of 0.25" to 2.75" in 0.25" increments. MTDs are engraved near both scan edges on one face. In accordance with MIL-STD-271G Figure 9, and NAVSHIPS Specification 0900-006-3010/Section 6. Comes with a Standard 32 Finish. If a 125 Finish is needed please call for pricing.	CI-NAV32.ICS	1018 Steel
		CI-NAV32.ISS	304 Stainless Steel
		CI-NAV.WC	Wooden Case
AWS Resolution	Also called an RC block, the AWS Resolution Reference Block is used for checking resolution capabilities of angle beam transducers. Contains three sets of 0.0625" diameter through-holes for 45°, 60° and 70°. In accordance with AWS Welding Highway and Railway Bridges specification D2.0, and Structural Welding Code ANSI/AWS D1.1.	CI-AWS.CS	1018 Steel
		CI-AWS.SS	304 Stainless Steel
		CI-AWS.WC	Wooden Case
DC	AWS-type block used for shear wave distance calibration. Contains a 1.0" radius overlaying a 2.0" radius on a 180° segment. In accordance with ASTM E164 and BRR/AWS X-1 specifications.	CI-DCBLOCK.ICS	1018 Steel
		CI-DCBLOCK.ISS	304 Stainless Steel
		CI-DCBLOCK.WC	Wooden Case
SC	AWS-type block used for shear wave sensitivity calibration. Contains two 0.062" diameter through holes. In accordance with ASTM E164 and BRR/AWS requirements.	CI-SCBLOCK.ICS	1018 Steel
		CI-SCBLOCK.ISS	304 Stainless Steel
		CI-SCBLOCK.WC	Wooden Case
DS	AWS-type block used for longitudinal distance and sensitivity calibration. Contains a 2.0" high section between two 4.0" sections. In accordance with AWS requirements.	CI-DSBLOCK.CS	1018 Steel
		CI-DSBLOCK.SS	304 Stainless Steel
		DI-DSBLOCK.WC	Wooden Case

Additional Blocks & Material Types are Available Upon Request. 7075 Aluminum Pricing is the same as 1018 Steel for all Curtis Blocks.



ULTRASONIC COUPLANT



GENERAL PURPOSE

• Echogel® 20 is an economical, basic-use couplant in medium-thick gel viscosity for ultrasonic inspections, like flaw detection/sizing and thickness gauging, where salt cake or metal corrosion salts are present. It provides good corrosion inhibition and resists viscosity breakdown on salt-caked boilers and other corroded materials.

• Ultragel® II is an industry-leading, high-performance, ultrasonic couplant for flaw detection and sizing, thickness gauging, flow metering and acoustic emission testing. This general-purpose medium viscosity gel is known for its outstanding performance, excellent corrosion protection, thixotropic properties and comprehensive range of specifications and approvals.

• UT-X® Powder is a cost-effective couplant powder for flaw detection and thickness gaging applications where ferrous corrosion inhibition is required. UT-X Powder retains viscosity on salt caked boiler tubes, corroded pipe, structural steel, steel billets, welds and ship plate. Mixed with water at the inspection site, its compact and lightweight packets are easy to transport to a job site or to store as an emergency couplant for unanticipated shortages.



Item	Product	Temperature Range	Container Size
48-901	Echogel 20	27 to 140°F	1 Gallon Cubitainer
48-905			5 Gallon Cubitainer
48-955			55 Gallon Drum
25-901	Ultragel II	-10 to 210°F	1 Gallon Cubitainer
25-905			5 Gallon Cubitainer
25-955			55 Gallon Drum
62-110	UT-X Powder	32 to 120°F	1 Gallon Packet
62-510			5 Gallon Packet

HIGH TEMPERATURE

• Sono 600 is a versatile, multi-purpose couplant with a wide operating temperature range for flaw detection, thickness gauging and acoustic emission testing in petrochemical, power generation, automotive, aerospace, food processing equipment and pharmaceutical manufacturing.

• Sono 1100 provides coupling for high-temperature thickness gauging and will maintain acoustic coupling at high temperatures beyond 15 seconds to give ample time to obtain thickness readings. In most cases, the signal strength increases with time to the point of the couplant's thermal decomposition.



Item	Product	Temperature Range	Container Size
45-T04	Sono 600	700 to 775°F	4 oz Tube
45-901			1 Gallon Cubitainer
30-T04	Sono 1100	0 to 700°F	4 oz Tube
30-901			1 Gallon Pail

**Additional Couplant Options are Available Upon Request*



	Echogel	Ultragel II	UT-X Powder	Sono 600	Sono 1100
Form	Gel	Gel	Powder	Thick Gel	Medium Paste
Viscosity*	5.5	5	Variable	N/A	N/A
Silicone				X	X
Glycerin		X			
Propylene Glycol	X	X		X	
Temperature Range	27 to 140°F	-10 to 210°F	32 to 120°F	700 to 775°F	0 to 700°F

SPECIFICATION COMPLIANCE

	Echogel	Ultragel II	UT-X Powder	Sono 600	Sono 1100
API	X	X		X	X
ASME BPVC	X	X		X	X
ASTM F519	X	X			
ASTM F945		X			
AWS	X	X		X	X
Pratt & Whitney		X			
PWA 36604		X			

**Subjective measure on a 0 - 10 scale where 0 = water, 5 = medium gel, 10 = very thick paste*

COUPLANT ACCESSORIES

Item	Description
SP*001453	White Cylindrical 8 oz. Couplant Bottle with Flip Top Cap
SP*001537	Translucent 1 Gallon Couplant Jug with Handle & Pump
SP*001492	55 Gallon Drum Pump



INSPECTION POINT SEALS

IPS's patented Inspection Port, is the cost-effective way to access piping and vessels when performing CUI inspections. Our silicone and EPDM rubber ports are made with exacting standards and deliver the quality and craftsmanship you deserve.

Our patented locking ridges keep the sealing flanges secure and keep moisture out. We provide a watertight seal without screws, O-rings or caulk significantly reducing installation time. Unlike some of our competitors, the fastening mechanism does not require bending or subsequent compromising of the fastening materials. Our seals fit smooth, embossed or corrugated jacketing without the use of special tools. Even our caps are well thought out, attaching to the seal flange with a high quality stainless steel, crimped sleeved lanyard to prevent cap loss.



INSPECTION PLUGS

Item	Size	Material	Temp. Rating	Recommended Minimum Pipe Diameter
95E15	1.5"	EPM Rubber Construction	-67°F to 340°F	Small Bore Insulated Piping
95E25	2.5"			Minimum 5"
95E35	3.5"			Minimum 7"
95E50	5"			Large Diameter Piping & Vessels
95S15	1.5"	Silicone Construction	-130°F to 500°F	Small Bore Insulated Piping
95S25	2.5"			Minimum 5"
95S35	3.5"			Minimum 7"
95S50	5"			Large Diameter Piping & Vessels

**Additional Plug Options are Available Upon Request*

INSPECTON LABELS

Inspection labels are specially designed to identify Thickness Measurement Locations (TML's) on non-insulated piping and vessels. Our UTL-2 and 3 inspection labels have protected write-on areas for recording TML numbers, line numbers, etc. All labels are UV stable and resistant to most solvents, oils and household chemicals.

Item	Description	UOM
UTL-1	1 3/4" Elipse with 3/4" Diameter Holes	Roll of 200
UTL-2	3" x 3" Label, 1" Diameter Hole, 1" x 3" Legend Area	Box of 100
UTL-3	1 3/4" x 3" Label, 1" x 3" Write on Legend Area	
UTL-5	1 1/4" Circular with 3/4" Diameter Holes	Roll of 200



UTL-1



* UTL-2*



UTL-3



UTL-5

MANDREL AND HOLE SAWS

The fastest and easiest way to cut accurate holes for installation of inspection plugs is with powered hole saws, and QED supplies the best. These aren't cheap hardware store saws, but heavy-duty industrial saws by Greenfield Industries. The mandrel separates from the cutting cup so you don't have to throw out the whole thing when the edge wears out; simply thread on a new cup and you're back in business.

- ▶ Blu-Mol Bi-Metal Hole Saws are of heavy-duty bi-metal construction for longer service life. 4/6 variable tooth provides faster, smoother cuts. Recommended for aluminum jacketing.
- ▶ RemGrit Carbide Grit Edge Hole Saws are made of tungsten carbide particles bonded to alloy steel for cutting extremely hard and abrasive materials. Recommended for stainless steel jacketing. Resists snagging.



Item	Description
ARBOR	1/2" Arbor with mandrel and high speed drill bit

Item	Size	Type
BM15	1.5"	Blue-Mol Bi-Metal Hole Saw Cup (Uses Arbor)
BM25	2.5"	
BM35	3.5"	
BM50	5"	
RG15	1.5"	RemGrit Tungsten Carbide Hole Saw Cup (Uses Arbor)
RG25	2.5"	
RG35	3.5"	

UT EQUIPMENT THICKNESS GAUGES

EHC-09 "Monochrome" Series Thickness Gauges

Danatronics most popular thickness gauges are those in our EHC-09 series. With thousands of units in the field, our durable, custom molded case with raise rubber keypad is IP54 rated and has proven it can handle your toughest jobs (this is bad help fix). The EHC-09 series is available in 6 models to suit every budget and application. What's best is our simple upgrade path where all gauges are capable of quickly and easily (directly from the keypad) adding any software options. Features include a graphic display with multiple languages, vibrate on alarm, fast minimum, echo to echo to ignore coatings, 100K reading Datalogger with export to excel, B-scan and live A-scan with waveform adjust.

Standard EHC-09 Wave Series includes: Ultrasonic thickness gauge, DKS-537, 5 MHz 0.375 inch diameter potted cable, operational manual, Data XL interface program, couplant, and transport case. See chart below for standard inclusions for each gauge.

***Limited 2 Year Warranty on Parts & Labor**



EHC-09 Color Series

Item	Specification	EHC-09DLW	EHC-09DL	EHC-09	EHC-09B	EHC-09A
Thickness Range:	0.020 - 20" in Steel	X	X	X	X	X
Hold Mode:	Holds display to retain last thickness reading with reverse video display	X	X	X	X	X
Freeze Mode:	Freezes display	X	X	X	X	X
Fast Mini/Max Mode:	Simultaneously displays minimum or maximum and actual thickness value at 20 measurements per second	X	X	X	X	0
Units:	Inches/Millimeters/Microseconds	X	X	X	X	X
Alarms:	Minimum/Maximum depth, vibrates, beeps and display flashes as well as keypad illumination and vibration	X	X	X	N/A	0
Illuminating keypad:	F1 = Red, F2 = Yellow and F3 = Green for easy, go/no-go testing	X	X	X	X	0
Gain:	Variable adjustment of gain	X	X	X	0	0
Differential Mode:	Displays the difference from the actual thickness measurement and a user entered reference value	X	X	X	0	0
Velocity Mode:	Displays acoustic sound speed	X	X	X	0	0
Non-Encoded B-Scan:	Displays a cross section of the test piece	X	X	0	0	0
Echo to Echo:	Measures the metal thickness only (ignore paint and coatings)	X	X	X	0	0
Datalogger:	Upgrade to Data Logger Version, 100,000 readings in linear, 2D, 3D grid or boiler alphanumeric files, 20 character file name, file compare, grid review and export to excel via Data XL interface program, also compatible with Ultrape	X	X	0	0	0
Carrying Pouch:	Custom molded with belt clip and elastic strap	X	X	0	0	0
Live Waveform (A-Scan)	Full adjustments, for gain in 1db step or AGC, main bang blank, blank after first received echo, range including zoom auto tracking to center echoes independent of material and rectification	X	0	0	0	0

0 = Software options that are field upgradeable, no need to return the unit to the factory

Model	Description
EHC-09A	Hand-Held Digital Ultrasonic thickness gage including, NIST Traceable calibration certificate
EHC-09B	Hand-Held Digital Ultrasonic thickness gage including, NIST Traceable calibration certificate
EHC-09	Hand-Held Digital Ultrasonic thickness gage including: Echo to Echo software, NIST Traceable calibration certificate
EHC-09DL	Hand-Held Digital Ultrasonic thickness gage including: Echo to Echo & Datalogger w/ B-Scan software, NIST Traceable calibration certificate
EHC-09-W	Hand-Held Digital Ultrasonic thickness gage with including: Live Waveform/A-Scan, Echo to Echo, NIST traceable calibration certificate
EHC-09DLW	Hand-Held Digital Ultrasonic thickness gage including: Echo to Echo, Datalogger w/ B-Scan & Live Waveform/A-scan software, NIST Traceable calibration certificate

***EHC-09 "Color" Series Thickness Gauges are Available Upon Request**

Danatronics ECHO Thickness Gauges



The perfect size of fit and function! Hold the ECHO in your hand and you will agree no detail has been overlooked and the ergonomics are unmatched by any thickness gage in the industry! The new ECHO series comes in 3 configurations; ECHO 9, ECHO 8 and ECHO 7. ECHO 9 is our corrosion gauge using dual transducers, ECHO 7 is our precision gage with 1 micron resolution using single element transducers and ECHO 8 is the ultimate unit combining both dual and single element transducers.

The ECHO series has a remarkable sunlight readable 3.5" color display, up to 32 Gb of micro SD memory, built-in rechargeable high capacity Li Ion battery all packaged in a custom case designed for IP67 rating. Not sure which model to choose? Don't worry, the ECHO series is fully capable of field upgrades directly from the keypad so you will never be stuck with an obsolete product or experience any downtime. ECHO Series can measure from .020" to 23" in steel in corrosion mode or as thin as .006" in steel when configured as a precision gage.

Standard Inclusions: ECHO series ultrasonic thickness gauge, DKS-537, transducer up to 10 MHz, LM-06 cable, 2oz bottle of couplant, operation manual, Data XL interface program, USB cable, Charger Adapter, Transport Case *A transducer is included with each model.

***Limited 2 Year Warranty on Parts & Labor**

ECHO 9 - Corrosion Thickness Gauge

Model	Description
ECHO 9	Hand-Held Digital Ultrasonic CORROSION thickness gage including: Echo to Echo software, NIST Traceable calibration certificate
ECHO 9W	Hand-Held Digital Ultrasonic CORROSION thickness gage including: Echo to Echo & Live Waveform/A-Scan software, NIST Traceable calibration certificate
ECHO 9DL	Hand-Held Digital Ultrasonic CORROSION thickness gage including: Echo to Echo & Datalogger w/ B-Scan software, NIST Traceable calibration certificate
ECHO 9DLW	Hand-Held Digital Ultrasonic CORROSION thickness gage including: Echo to Echo, Datalogger w/ B-Scan & Live Waveform/A-Scan software, NIST Traceable calibration certificate

***ECHO 7 (Precision) & ECHO 8 (Corrosion and Precision) Series Thickness Gauges are Available Upon Request**

DAKOTA ZX Series Thickness Gauges




The ZX Series of thickness gauges are packaged in an all aluminum case making them the most durable gauges on the market. The features included in the ZX Series offer a quality tool that will meet or exceed your application requirements. Our 5 year limited warranty indicates how we feel about the reliability and durability of the ZX Series gauges.

Applications: Corrosion & Pitting, Tube & Pipe, Tanks, Boilers, Glass, Variety of Applications

ZX Series Kits Include: Ultrasonic thickness gauge, selectable transducer, couplant, manual, plastic carrying case, certificate of calibration and AA batteries. PC software and data transfer cable included with data logging gauges. PC software available for download from website.

***Limited 5 Year Warranty**



Models	Operating Temperature	Display	Data	Specifications	Measuring	Features	Warranty
ZX-1 & ZX-2 	- 22 to 167F	Multi-function 7 segment 4.5 digit liquid crystal display with 0.500 in digital height. Backlight is selectable on/off/auto, and selectable brightness (Lo, Med, Hi) options.	N/A	Range: 0.025 - 36" (Dependent upon material and transducer type) Resolution: 0.001 inches Velocity Range: 0.0120 to .7300 in/μs PRF: 200Hz Display Update Rate: 10Hz Velocity Settings: ZX-1: Adjustable on keypad ZX-2: Adjustable on keypad and selectable from 8 factory presets and 2 programmable custom velocity options.	The ZX-1 & 2 are basic fixed velocity gauges that require no special training to operate. Calibration is done by simply scrolling to a known material velocity, or selecting a common material from a lists of material types in the ZX-2. The gauges were designed and built to withstand the roughest industry conditions, are affordable, and backed by a 5 year limited warranty. If you're looking for a quality instrument to reliably meet or exceed your application expectations, look no further.	5 Year Limited	
ZX-3 & ZX-5/ ZX-5DL 		Multi-function 7 segment 4.5 digit liquid crystal display with 0.500 in digital height. Backlight is selectable on/off/auto, and selectable brightness (Lo, Med, Hi) options.	Sequential data storage, 40 files of 250 readings per file, for 10,000 readings (ZX-5DL).	Range: 0.025 - 36" (Dependent upon material and transducer type) Resolution: 0.001 inches Velocity Range: 0.0120 to .7300 in/μs PRF: 200Hz Display Update Rate: 10Hz Velocity Settings: Gain: 40-50dB range in 3dB steps	Zero: Manual or Auto Probe Diameter: Selectable probe diameter for improved linearity High Speed Scan: Display the lowest reading found during a scan. Scan speed at 100Hz. Differential Mode: Display the +/- difference from a nominal value entered (ZX-5 Series) Alarm Mode: High & low alarm limits with audible and visual indicators (ZX-5 Series) VX Velocity: Measure in terms of velocity for nodularity testing (ZX-5 Series)		
ZX-6 & ZX-6DL 		Multi-function 7 segment 4.5 digit liquid crystal display with 0.500 in digital height. Additional icons to indicate features and modes. Backlight is selectable on/off/auto, and selectable brightness (Lo, Med, Hi) options.	Sequential data storage, 40 files of 250 readings per file, for 10,000 readings (ZX-6DL).	Pulse-Echo Range: 0.025 - 36" Echo-Echo Range: 0.100 - 6" in base metal, and coating 0.001 - 0.075" (Dependent upon material and transducer type) Resolution: 0.001 inches Velocity Range: 0.0120 to .7300 in/μs PRF: 200Hz Display Update Rate: 10Hz Gain: 40-52dB range in 3dB steps Time Dependent Gain: Used in both Pulse-Echo and Echo-Echo modes depending upon transducer	Zero: Manual or Auto Probe Types: Selectable probe frequency & diameter for improved linearity High Speed Scan: Display the lowest reading found during a scan. Scan speed at 100Hz. Differential Mode: Display the +/- difference from a nominal value entered Alarm Mode: High & low alarm limits with audible and visual indicators VX Velocity: Measure in terms of velocity for nodularity testing		

***Additional Dakota Corrosion, Precision, Specialty and Racing Series Thickness Gauges are Available Upon Request**

Model	Item	Description
ZX-1	Z-300-0001	Single velocity calibration. Velocity manually set using the VEL key on the keypad. Backlit display.
ZX-2	Z-301-0001	Single velocity calibration. Selectable 8 common material velocities, 2 custom velocities, or set manually using the VEL key. Backlit Display.
ZX-3	Z-302-0001	Easy field calibration; 1 or 2 point options. Selectable 8 common material velocities, 2 custom velocities, or set manually using the CAL key. Auto/manual zero, adjustable gain, selectable probe diameter (linearity), high Speed Scanning, and Backlit Display.
ZX-5	Z-303-0001	Same features as the ZX-3 plus Alarm Mode (high/low limits), Differential Mode, and VX velocity gauge. CDC compatible serial over USB (standard). *Optional accessory RS232 serial or Bluetooth modules available
ZX-5 DL	Z-304-0001	Same features as the ZX-5 (less serial over USB), plus an on-board data logger - Stores 10,000 readings in 40 files of 250 readings per file. USB-C connectivity, Includes transfer cable.
ZX-6	Z-305-0001	Same features/options as the ZX-5, plus echo-echo through paint multi mode. Thru-Paint range: 0.100" - 6.0" of base metal, with coating thickness from 0.001 to 0.075". Six selectable high damped probe diameters and frequencies. *Optional accessory RS232 serial or Bluetooth modules available
ZX-6 DL	Z-306-0001	Same features as the ZX-6 (less serial over USB), plus an on-board data logger - Stores 10,000 readings in 40 files of 250 readings per file. USB-C connectivity, includes transfer cable.

***Additional Dakota Corrosion, Precision, Specialty and Racing Series Thickness Gauges are Available Upon Request**

FLAW DETECTORS DAKOTA & SONATEST

The DAKOTA DFX-8 Series Flaw Detector & Thickness Gauge

The DFX-8 series by Dakota is both an Ultrasonic Flaw Detector & a Multi-Mode Ultrasonic Thickness Gauge all in one quality instrument. The DFX-8 features an easy-to-use interface, a fantastic test range (from 0 inches to 100 feet), is lightweight (4.5 lbs) and cased in rugged IP-65 metal housing, making this machine a top-notch fully loaded instrument that doesn't skimp on quality.

Standard Inclusions: DFX-8 Series Flaw Detector including 4 GB SD internal & up to 64 GB external SD slot, lithium ion battery, battery charger, transport case, operating manual with DakView PC software & USB cable. Also features DAC, AWS, TCG, DGS sizing toolkits and a 4oz bottle of couplant.

***Limited 2 Year Warranty**



Model	Item	Description
DFX-8	Z-250-0001	Dakota Ultrasonics DFX-8 Kit Includes: Operating Manuals, DakView3 PC Software & USB Cable, 4 oz. Couplant, Lithium Ion Battery, Line Power Adaptor, Universal Power Cable, Hard Carrying Case and Calibration Certificate
DFX-8+	Z-251-0001	Dakota Ultrasonics DFX-8+ Kit Includes: Operating Manuals, DakView3 PC Software & USB Cable, 4 oz. Couplant, Lithium Ion Battery, Line Power Adaptor, Universal Power Cable, Hard Carrying Case and Calibration Certificate

Sonatest WAVE Interactive Flaw Detector

What if you could tailor the settings on your UT device and alter it to your own process and people’s needs? An instrument where all the useful parameters are pre-set and available in less than two clicks? Now you can.

Introducing WAVE by Sonatest. It integrates the latest technologies available in order to create a revolution in the ultrasonic non-destructive testing equipment market.

Not only is it innovative, but the customisable interface also optimises the daily workflow, and a unique and embedded interactive scan plan, with ray-tracing capability and simulation tools, consolidates your results.

Its wifi capability allows you to access it anywhere in the field, eases data transfer, application installation and manages calibration date and software version.



Mitigate false calls with the new WAVE Interactive Scan Plan

The WAVE Interactive Scan Plan has been developed to ease diagnostics on the inspected part. The scan plan can reproduce complex geometries such as curved surfaces and T-Joints. Combined with a real-time Raytracer, this unique feature facilitates the distinction between a real flaw and a geometrical indication, thus avoiding unnecessary repair.

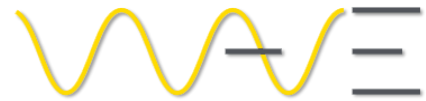
Utouch Technology

The Sonatest Utouch Technology allows your device to operate in the same way as a mobile phone. Combined with rugged components and an intelligent algorithm which makes the distinction between couplant and finger, the Sonatest WAVE is the first true industrial touch-screen device on the market.

Wave Concept	Wave Applications	Up to 50 Apps	Transmitter	PRF	1500
	Wave Utouch Technology	P-CAP Multi Touch		Pulser (Voltage)	100 to 500 V
Interactive Scan Plan	Crown and Root Geometries	Yes	Receiver	Dynamic Range	120 dB
	Weld Overlay			Bandwidth	0.2 to 20 MHz
	TKY / Nozzle / Flange Geometries			Filters	20 filters
	Cured Surface			Signal Averaging	Yes
	Live Raytracer			Battery Life	10 Hours
Measurements	Projected A-Scan	4	General	Display Size (Resolution)	7" Wide
	True Depth on Complex Shapes			Dimensions	8.7" x 6.8" x 2.5"
	Gates			Weight	3.7 lbs.
	DAC/Split DAC			IP Rating (Design)	IP 67
	TCG			Operation Temperature	-10°C to 45°C
	AVG/DGS			WiFi	Yes
	AWS			Speaker and Audio Recording	
	API				
Curved Surface Correction (CSC)	Warranty	2 Year Warranty			
TKY and Complex Shapes					

Reach performance & conformity with the Wave Application Concept

The WAVE Application Concept combines conformity and performance allowing the operator to customise the user interface according to his/her specific procedure. A lean manufacturing philosophy means less training and long-term financial benefits. The intuitive user interface with an easy to use display will guarantee workflow optimisation as well as preventing potential operational errors.



Model	Description
WAVE BNC	Sonatest WAVE BNC Package Includes: WAVE Flaw Detector with BNC Connectors, Battery & Charger (with mains cable), Ultrasonic Couplant, Ethernet Adapter & Cable, User Manual, Quick Start Guide, Certificate of Calibration and Conformance & Carrying Case

**Sonatest SITESCAN and MASTERSCAN Series Flaw Detectors are Available Upon Request*

TRANSDUCERS AND WEDGES

SENSOR NETWORKS, DAKOTA, Danatronics, Olympus, SONATEST & Technisonic



QED offers a complete range of high performance, high technology ultrasonic transducers for thickness measurement, general flaw detection and Phased Array applications.

Each transducer is made to exact standards regarding acoustical, electronic and mechanical properties. Our transducers are tested thoroughly, typically at three stages of manufacture. A complete range of transducer types are available with a variety of connector styles, case configurations, frequencies and element sizes.

A complete range of transducer types are available with a variety of connector styles, case configurations, frequencies and element sizes.



Item	Manufacturer	Description
D790-SM	OLYMPUS	Olympus Dual Transducer, 5 MHz, 0.434" Tip Diameter, Straight Microdot Connector, to be used with the LCMD-316-5B Cable
LCMD-316-5B		Olympus Dual Molded LEMO 00 to Microdot cable, 5 ft, for use with D790-SM

CABLES

We offer a complete line of transducer cables. These cables are designed for optimum performance and durability.

Item	Description	Cable Type	Length
SP*001647	BNC - BNC	RG 174	6'
Q-BL1-6	BNC - Lemo 1		
Q-BL0-6	BNC - Lemo 00		
Q-LOLO-6	Lemo 00 - Lemo 00		
Q-LOL1-6	Lemo 00 - Lemo 01		
Q-BM-6	Microdot - BNC		
Q-LOM-6	Microdot - Lemo 00		

**Custom Configurations and Lengths are Available Upon Request*



VISUAL MEASURING DEVICES WELDING GAUGES

- ▶ Hi-Lo Welding Gauge - Measures root weld space, eliminates rejects - improves productivity
- ▶ Bridge Cam Gauge - Angle of preparation, 0-60 degree. Measuring: excess weld capping, depth of undercut, pitting, fillet weld length & throat size and misalignment
- ▶ V-WAC - Undercuts/Pits to 1/4 Inch, Crowns to 1/4 Inch by 1/64 Inch Increments (Tolerance .006")
- ▶ Pipe Pit Gauge - Range is 0 to 1/2" in 1/64" & .010 Increments. Arm can be locked in place at any dimension
- ▶ Automatic Weld Size Gauge - for accurate measurement of butt fillet type welds. Check reinforcement, throat and determine the leg size of the fillet weld
- ▶ 7-Piece Fillet Weld Gauge Set - Check Fillet Leg and Throat size, 1/8" to 1"

Item	Description
SP*001144	Economy Single Purpose Hi-Lo Welding Gauge (Inch)
SP*001145	V-WAC Welding Gauge (Inch)
SP*001146	Bridge Cam Gauge Welding Gauge (Inch & Metric)
SP*001147	Pipe Pit Welding Gauge (Inch)
SP*001148	Automatic Weld Size Welding Gauge (Inch)
SP*001149	7-Piece Fillet Weld Gauge Set (Inch & Metric)



VIDEO INSPECTION SYSTEM WOHLER VIS 700 HD Inspection System & Accessories

The Wohler VIS 700 inspection camera offers exactly what professionals have been waiting for: razor sharp high definition images, a focus function for precise inspection, and now wireless locating. The Wohler VIS 700 is the ideal inspection camera for waste water pipes, flue gas and ventilation lines as well as NDT and plumbing applications.

Fully Digital Camera System

A new digital high-resolution sensor assures amazingly sharp images. With the Wohler VIS 700, professionals are able to plan their maintenance services on the basis of clearly visible facts. The displayed level indication ensures you to keep orientation in the pipe. The camera display shows the camera head position and angle for ease of navigation. The home function allows you to realign the camera head straight forward when needed. HD images are displayed for you on the brilliant, touch screen high-resolution monitor.

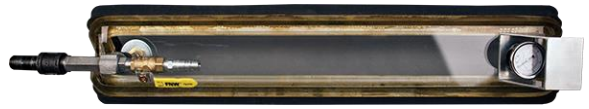
The Wöhler VIS 700 inspection camera is designed to transmit live video data to smart devices via Wireless LAN. While conducting an inspection, you have the option to stream live images and videos on a smartphone or tablet. You can also save all footage to an SD card for reviewing at a later time.

WÖHLER

Item	Description
7082	Wohler VIS 700 Monitor with 7" HD TFT-broad band color monitor incl. 5 ft connection cable, Glare shield, Li-Ion battery, Wohler HD pan-and tiltable camera head 1.5" (detachable), SD card 32 GB, Camera rod 0.34" x 0.22" - 100 ft long, 3 replacement plastic domes, Anti-slide mat, USB charger with USB-C cable and plastic carrying case
7498	Wohler VIS 700 Monitor with 7" HD TFT-broad band color monitor incl. 5 ft connection cable, Glare shield, Li-Ion battery, Wohler HD miniature camera head 1" (detachable), Wohler HD pan-and tiltable camera head 1.5" (detachable), SD card 32 GB, Camera rod 0.34" x 0.22" - 100 ft long, 3 replacement plastic domes, Anti-slide mat, USB charger with USB-C cable, plastic carrying case, Guidance sleeve and Guidance sleeve with protection cage

Item	Description
8859	Wohler HD Pan and Tilt 1.5" Color Camera Head (Detachable)
7613	Wohler HD Miniature Camera Head 1" (Detachable)
3675	Wohler Replacement Polycarbonate Domes for 1.5" Camera Head (10 pcs.)
61094	Wohler Rechargeable Battery VIS 700
11168	Wohler VIS 700 USB Adaptor/Charger USB

LEAK DETECTION VACUUM BOX TESTING VACUUM BOXES, ACCESSORIES & SOLUTION



Used for leak testing in building of ships, barges, tanks, or any seal weld application. All Vacuum Boxes come with a complete Venturi and Non-Certified Gauge.

Item	Design	Size
VB18	Flat	18"
VB30		30"
VB18C	Corner	18"
VB30C		30"
VB30FX	Flexible	30"
VB3WIC	3 Way Inside Corner	Triangle - 9.9" x 8.6" with .25" Radius
VB24BT	Boat Tail Flat	24"

**Pricing is Based off a Non-Certified Gauge, Call for Pricing if a Certified Gauge is Required*

Item	Description
VB-PUMP	Vacuum Pump - Air Flow 26.5" Mercury; 110 Volt; 13 PSI
VB-Venturi	Venturi made of steel with inlet thread of 3/8" NPT outlet and vacuum ports are 1/2" NPT able to Vacuum up to 23 Hg (Used with Compressed Air)
VB-Gauge	2" Steel gauge with brass 1/4" NPT range is 0-30 Hg VAC (Non-Certified)
VB-Gauge-C	2" Steel gauge with brass 1/4" NPT range is 0-30 Hg VAC (NIST Certified)
SP*001550	Type 1 SHERLOCK 5-Second Leak Detector, 1 Gallon



HARDNESS TESTING TELEWELD

BRINELL HARDNESS TESTING

Telebrineller hardness measurements are a direct comparison to a known physical reference and therefore, measurements are not subject to inaccuracies due to; alloy, thickness, geometry, position, etc., that are common with many other portable testers.

Item	Description
BHNTS	Telebrineller Complete Set; Includes five (5) bars of selected hardness; Microscope; Computer; Bar Holder; Calculation Pad, all inside Carrying Case
BHNXXX	Telebrineller Test Bars (Available in 145-350 Hardness)
239-24	Halteman Filletester (Designed for Brinell Hardness Testing of fillet welds and other hard to reach areas)

PHASE II

PORTABLE HARDNESS TESTER

State of the art, digital portable hardness tester is designed to test the hardness of large hard metal parts. Loaded with useful functions only found on high priced models the PHT-1800 portable hardness tester is clearly setting a new industry standard by being the most accurate, economically priced portable hardness tester on the market today. Fast test speeds coupled with memory and output, this unit is a hand's down winner whether you are out in the field or in the QC shop.

Item	Description
PHT-1800	Digital Portable Hardness Tester which can perform tests that easily convert to the most popular hardness scales (Rockwell, Brinell, Vickers, Shore, etc.). Includes: Base instrument, Impact device D, Calibrated test block, Custom carry case, Cleaning brush and Operation manual



FLAWED TEST SPECIMENS



STANDARD SPECIMEN KITS

FlawTech Standard Kit Specimens are designed to enhance the training and development of new and veteran technicians. Kits will assist with basic flaw detection and sizing of real flaws found in common weld geometries.

Item	NDT Method	Specimens/Kit	Discontinuities
DK-1	NDT Demonstration Kit (Includes x-ray film for RT pipe specimen)	5 (3 Plates, 1 Tee and 1 Pipe)	11 (2 each plates & tee, 3 in pipe)
RK-1	Radiography Kit (Includes x-ray film for each specimen)	10 (8 Plates, 1 Pipe and 1 Tee)	20 (2 each specimen)
VK-1	Visual Kit	10 (7 Plates and 3 Tees)	
UK-1	Ultrasonic Kit	10 (8 Plates, 1 Pipe & 1 Tee)	
MK-1	Magnetic Particle/ Liquid Penetrant Kit	10 (8 Plates and 2 Tees)	
RR-1	Reference Radiograph Set	16 Radiographs	20 (Incl. 6 Processing Defects)



PRACTICAL EXAM SPECIMENS

- ▶ Practical exam specimens are larger than our "standard" kit specimens
- ▶ 12 UT and 12 MT / PT specimens to choose from
- ▶ Each specimen will contain 3 randomly placed "real" flaws
- ▶ Designed to enhance the training and qualification of level I & II personnel with regards to ISO9712, PCN & TC - 1A
- ▶ Purchase any combination of specimens to make your set
- ▶ Custom specimens are available upon request



UT THICKNESS SPECIMENS

Corrosion, Erosion, and Lamination UT Thickness Training & Certification Plates

Specimen Type	Plate Size - 8" x 8"	Thickness	Discontinuities
Four (4) Section Plate		0.25"	2
		0.375"	
		0.50"	
		0.75"	
		1.0"	
Sixteen (16) Section Plate		0.25"	4
		0.375"	
		0.50"	
		0.75"	
		1.0"	

SERVICE

QED provides comprehensive repair services for equipment across all NDT modalities and manufacturers. Our team of qualified technicians will restore your equipment to working order in accordance with manufacturer standards quickly and efficiently, saving you time and money. We also provide onsite repairs, calibrations, and installations.

EQUIPMENT EVALUATION & REPAIR

WHAT WE REPAIR

- ▶ UV Lights
- ▶ MPI Equipment (Yokes, Portables and Bench Units)
- ▶ LED Film Viewers
- ▶ Densitometers
- ▶ X-Ray Equipment (Controllers, Generators & Tubes)
- ▶ Radiation Safety/Survey Equipment
- ▶ Film Processors



Item	Description
SP*001437	In-House Equipment Evaluation Fee
ROC	Rush Order Charge
ISTL	In-House Service Technician Labor (Hour)

**In-House Evaluation Fee (Per piece of Equipment) will be waived if Equipment is Repaired or New Equipment is Purchased*

EQUIPMENT CALIBRATION/CERTIFICATION

QED provides professional calibration services in compliance with the National Institute of Standards and Technology (NIST) for a wide range of meters, gauges, and other NDT equipment used in various industries.



RADIOGRAPHY

Item	Code	Frequency	Description
C-RSM	State & NRC	6 Months	Radiation Survey Meters
C-ARM C-PD	State & NRC	12 Months	Alarming Rate Meters Pocket Dosimeters
SP*001580 SP*001709	State & NRC	12 Months	Tracerco Blue PED Mirion PED (DMC 3000 & RAD-60R)
SP*001503	ASME Sec. V	90 Days	Densitometer
SP*001557	ASTM E1390	Upon Repair	Certification of Light Intensity on Film Viewers per ASTM E1390
SP*001504	ASME Sec. V	12 Months	Certification of Density Step Tablet (All Brands)

BLACKLIGHTS & LIGHT METERS

Item	Code	Frequency	Description
SP*001650	EN ISO 3059	12 Months	Certification of Light Output
SP*001335 SP*001336	ASTM E1444 & E1417	6 Months	Calibration of a Dual Sensor Light Meter (Non-Programmable) Calibration of a Single Sensor Light Meter (Non-Programmable)
SP*001527 SP*001528	ASME Sec. V, ASTM E3024 & E165	12 Months	Calibration of a Dual Sensor Light Meter (Non-Programmable) Calibration of a Single Sensor Light Meter (Non-Programmable)
XR-1000/R	ASTM	6 or 12 Months	Calibration of AccuMAX XR-1000 Read Out Unit
XDS-1000/R		(Depending upon ASTM Standard)	Calibration of AccuMAX XDS-1000 Dual (UV-A / VIS) Light Sensor
XS-555/L/R	ASTM E1742	12 Months	Calibration of AccuMAX XS-555/L Luminance Sensor
XP-2000/R	ASTM	6 or 12 Months (Depending upon ASTM Standard)	Calibration of AccuPRO XP-2000 Dual (UV-A / VIS) Sensor Light Meter

MAGNETIC PARTICLE

Item	Code	Frequency	Description
SP*001026	ASTM E1444 & E3024	6 Months	Yokes (All Makes & Models)
SP*001262	Customer	12 Months	Certification of 10 lb. Test Weight
SP*001021 SP*001529	ASTM E1444 & E3024 ASME Sec. V	6 Months 12 Months	Magnetic Particle Calibration (Bench or Portable Unit)
SP*001154	ASTM E1444 & E3024	6 Months	Analog Magnetometer/Gaussmeter Calibration
SP*001645 SP*001646	ASTM E1444 ASTM E3024	6 Months 12 Months	Electronic (Digital) Gaussmeter Calibration

**Pricing does not include applicable travel expenditures if Calibration is required at Customer's location*

ULTRASONIC & HARDNESS TESTERS

Item	Code	Frequency	Description
SP*001500	ASTM E317	12 Months	Calibration of an Ultrasonic Thickness Gauge
SP*001562	ASME Sec. V		Calibration of an Ultrasonic Flaw Detector
SP*001505	ASTM E797		Certification of Ultrasonic Thickness Step Wedges
SP*001456	ASTM E18 & A956		Certification of Hardness Tester

SPECIAL SERVICES



Anti-Corrosion Treatment



LED FILM VIEWER MODIFICATION

Item	Description
SP*001710	Anti-Corrosion Treatment to NEW LED Film Viewer
SP*001710-USED	Anti-Corrosion Treatment to USED LED Film Viewer. Includes pre-existing corrosion clean and replacement (as required) of switches, cooling fans and dimmer.

**Modification is available for most make and model LED Film Viewers*

PREVENTATIVE MAINTENANCE (PM)

QED offers customized Preventative Maintenance Services to minimize downtime and ensure quality inspections. Our detailed electronic PM records allow us to not only identify unusual machine wear but also operator misuse that could cause premature equipment failure or safety concerns.

FILM PROCESSORS

Item	Brand	Model	Description
SP*001510	CARESTREAM	M37 Plus	*Clean Racks/Tanks with Systems Cleaners and Replace Filters - Check Racks, Drive, Dryer and Pumps for Missing or Worn Parts*
SP*001455		M43IC	
SP*001359	GE (AGFA)	NOVA	
SP*001337		M-ECO	
SP*001348		NDT-U	
SP*001454	NDT-Si		

**Above pricing is based upon PM being performed at Customer's location and does not include applicable travel expenditures*



FIELD SERVICE

CALL-OUT RATES

QED also provides on-site Field Repairs and Calibration services. Please call your local branch for more details.

Item	Description
STT	Service Technician Travel
STL	Service Technician Labor
ESTL	Emergency (Rush) Service Technician Labor

**The above rates are based off work being performed Monday - Friday (8AM-5PM). If work is needed to be performed outside of this time, then an Estimate will be provided*

**A Four (4) Hour Labor (On-Site) Minimum applies for all local call-outs in addition to applicable Travel Time*



**QUALITY EQUIPMENT
DISTRIBUTORS, INC.**

www.qeddirect.com

**"FOR ALL YOUR NDT EQUIPMENT,
SUPPLIES AND SERVICE - THINK
QUALITY"**

REPRESENTING OVER 30 MANUFACTURERS

CarestreamNDT



comet



BUFFALO, NY

3176 Abbott Rd. Suite 700N
Orchard Park, NY 14127
Telephone: (716) 667-7703
sales@qeddirect.com

HOUSTON, TX

4044 Strawberry Road
Pasadena, TX 77504
Telephone: (713) 277-7913
txsales@qeddirect.com