



FOCUS BESPOKE ADD-ON'S

The Bespoke Add-On's are a collection of smaller programs that have been written for various users over a period of time which perform some tasks that may be very useful to your business.

Ideal for

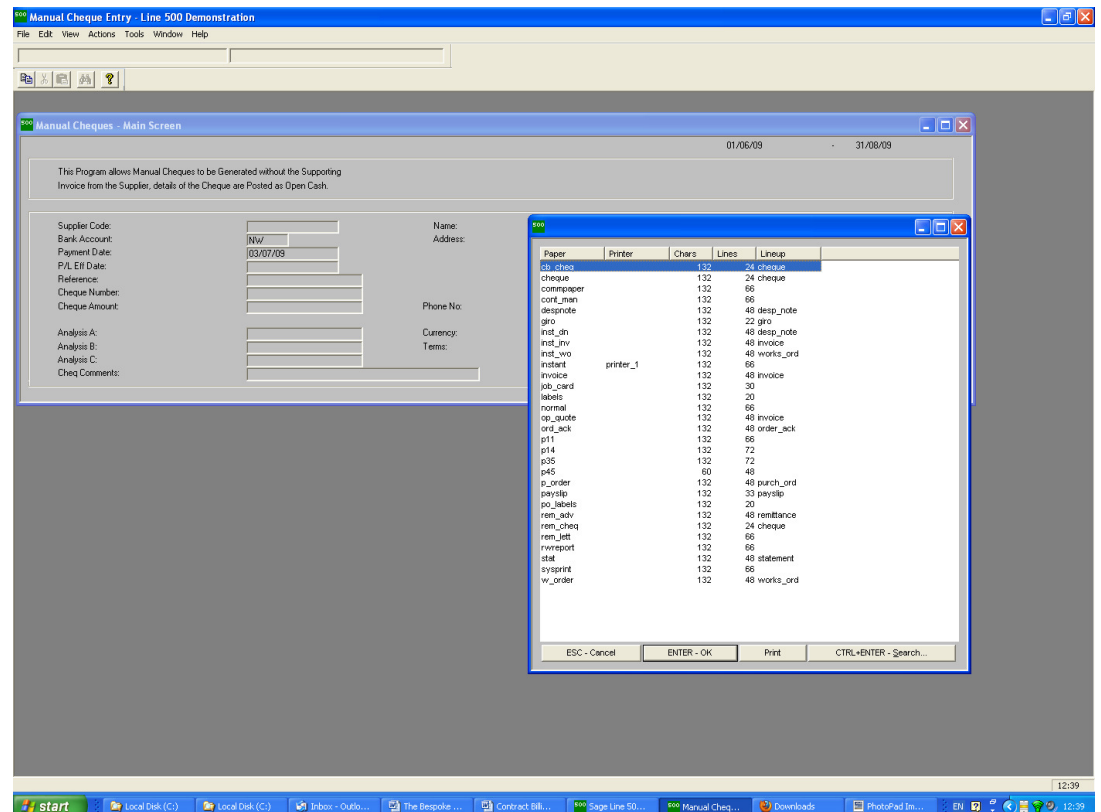
- C.O.D. Terms
- Payment required prior to Invoice
- Freight Forward Industry
-
-

FOCUS MANUAL CHEQUE PRODUCTION

Written for the Freight Forwarding Industry, this program allows you to generate a cheque from the Purchase Ledger without an associated Supplier Invoice, details are then posted onto the ledger as open cash and the cheque can be printed as either a cheque or a cheque/remittance advice.

Fully Integrated with:

- Sage 1000
- Sage Line 500 v5, 5.5, 6.0 and 7.0
- Sage Line 200
- Sage CS3
- Sage Enterprise





FOCUS BESPOKE ADD-ON'S

The Bespoke Add-On's are a collection of smaller programs that have been written for various users over a period of time which perform some tasks that may be very useful to your business.

Ideal for

- Controlling stock re-ordering.
- Moving stock around locations.
- Finding available stock.
-

FOCUS MULTI COMPANY STOCK ENQUIRY.

If your a large multi national company then this program allows you to check Stock levels and other Stock information for each company within your Sage system, for each company you can also instruct the software to look across a user definable list of Warehouse Codes, no more messing about checking Stock within each company as everything is displayed upon one screen.

Fully Integrated with:

Sage 1000
Sage Line 500 v5,
5.5, 6.0 and 7.0
Sage Line 200
Sage CS3
Sage Enterprise



FOCUS BESPOKE ADD-ON'S

The Bespoke Add-On's are a collection of smaller programs that have been written for various users over a period of time which perform some tasks that may be very useful to your business.

Ideal for

- Bespoke Labels
-
-

FOCUS BESPOKE LABEL PRINTING.

Quite simply a label printing program that can generate X number of labels against the customer database or the SOP Orders database, with the SOP Orders database you can generate X number of labels or utilise the label quantity field within Sage Line 500, Labels are fully user definable.

Fully Integrated with:

Sage 1000
Sage Line 500 v5,
5.5, 6.0 and 7.0
Sage Line 200
Sage CS3
Sage Enterprise



FOCUS BESPOKE ADD-ON'S

The Bespoke Add-On's are a collection of smaller programs that have been written for various users over a period of time which perform some tasks that may be very useful to your business.

Ideal for

- Quick release of held orders

FOCUS SOP RELEASE ORDERS.

If you generate lots of orders within the SOP Module within Sage then this program allows you pick up all the relevant details within an order that may be either on Back Order, or on Credit Stop for example, the orders are then consolidated for any given customer and one order is quickly released out of the system.

Fully Integrated with:

Sage 1000
Sage Line 500 v5,
5.5, 6.0 and 7.0
Sage Line 200
Sage CS3
Sage Enterprise



FOCUS BESPOKE ADD-ON'S

The Bespoke Add-On's are a collection of smaller programs that have been written for various users over a period of time which perform some tasks that may be very useful to your business.

Ideal for

- Visual check of forecasted stock levels
- Annual rolling stock forecasts

FOCUS STOCK FORECASTING.

If you order Stock several months in advance then this program allows you to setup Forecasts for a rolling year in advance and then interrogates both the SOP and POP Orders to ascertain if you are going to run out of Stock, there is an on screen enquiry and a report to help manage your Stock Forecasting requirements.

Fully Integrated with:

Sage 1000
Sage Line 500 v5,
5.5, 6.0 and 7.0
Sage Line 200
Sage CS3
Sage Enterprise



FOCUS BESPOKE ADD-ON'S

The Bespoke Add-On's are a collection of smaller programs that have been written for various users over a period of time which perform some tasks that may be very useful to your business.

Ideal for

- Passing data to external systems
-

FOCUS OUTPUT CUSTOMER BALANCES.

This program was written specifically to output the customer balances for FCL. The output is in fixed record format and may be used to transmit customer balance data to any other software that may require this information.

Fully Integrated with:

Sage 1000
Sage Line 500 v5,
5.5, 6.0 and 7.0
Sage Line 200
Sage CS3
Sage Enterprise