



FOCUS THINKLINK

Features at a glance

- Accepts comma delimited and fixed position files.
- On-line debug program.
- Utilises standard/custom Sage system keys.
- Multiple Interfaces across most modules.
- Error Batch Reports for ease of correcting errors.
- Supports Julian date and standard arithmetic functions.
- Auto calculates delivery charges.
- Hold imported foreign orders.
- Cross check post codes & list matches.
- Post code Validation & Conversion.
- Checks back X number of days for duplicate orders.

Fully Integrated with:

Sage 1000
Sage Line 500 v5, 5.5, 6.0 and 7.0
Sage Line 200
Sage CS3
Sage Enterprise

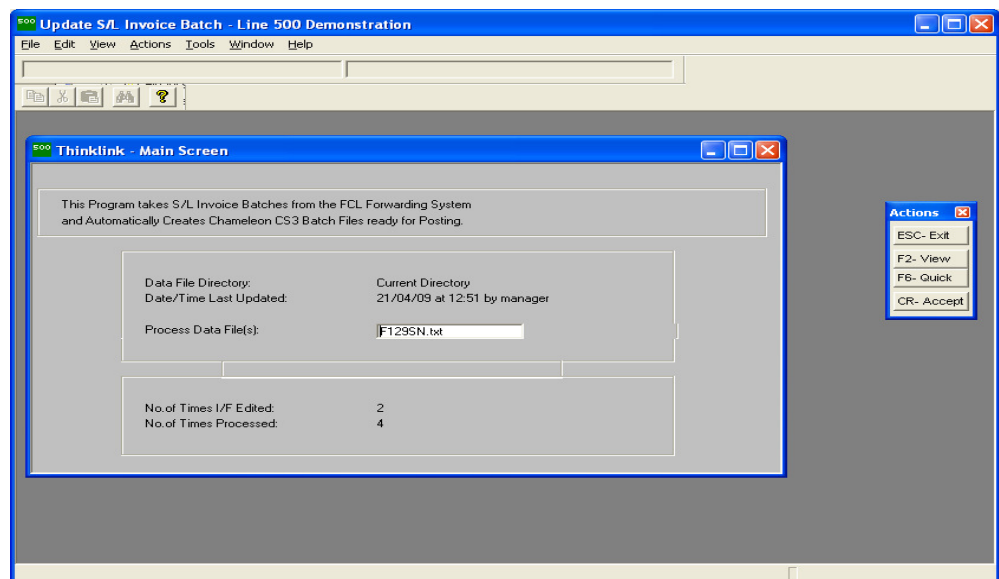
Examples include:

Freeway EDI
Sage Paypoint - APS
eCommerce
Handheld Technology
Saleslogix
eProcurement
Factoring
Web Integration

ThinkLink is the definitive utility for importing data into Sage 1000, Sage Line 500/200, Enterprise or CS3.

ThinkLink solves the problems of linking Third Party Software whilst maintaining data integrity and error reporting. All that is required from the Third Party Application is the relevant data in a CSV or flat ASCII file format and ThinkLink will take care of the import into Sage. XML/Till packet file imports will require intervention scripted within the interface.

ThinkLink lets you string input files together in any predetermined order, such as customer detail amendments, followed by new accounts and addresses, contacts, purchase and sales order details, which it then passes automatically in the right sequence into Sage.



ThinkLink also ensures that any new customer imported into Sage can automatically be on credit stop until approved in the normal manner by the accounts department. This means that you only enter data once eliminating the need to re-key, and that data integrity between the two systems can be ensured. Other features include full validation of data – ThinkLink supports all the Sage validation criteria and provides a detailed error report, it also allows you to create look-up tables for all interfaces to convert any incoming codes into the required Sage codes.

ThinkLink also has a special holding feature for the Sales Ledger, Purchase Ledger, Cash Book Batch Files and Sales Orders so Batches can be imported, corrected and then posted to the Sage System as normal.

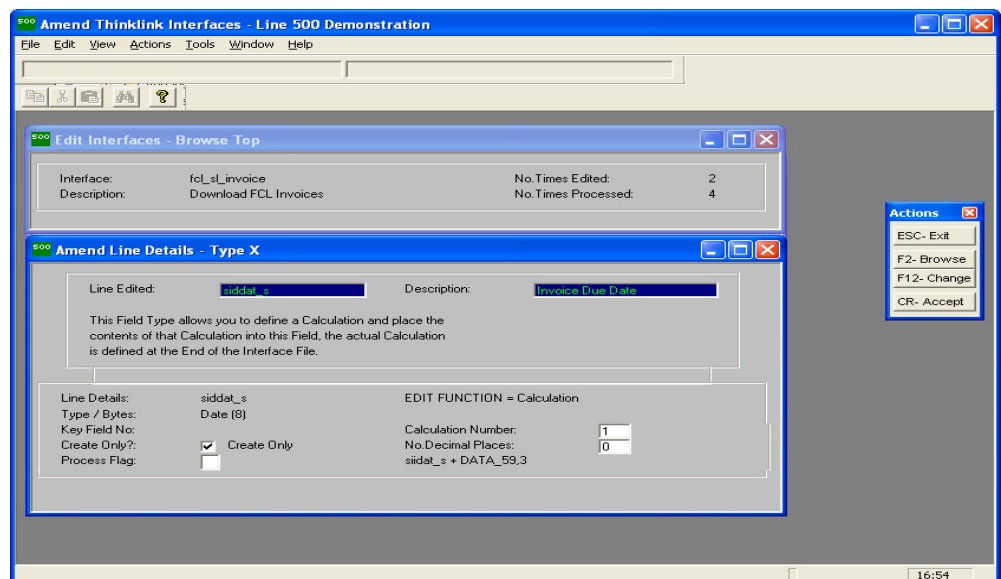


FOCUS THINKLINK IMPORT INTO SAGE

ThinkLink consists of a core module and offers specific interfaces for most Sage modules. These interfaces can be set to allow the operator to post all valid entries whilst rejecting and reporting on any errors. Alternatively you can hold an entire batch to allow for investigation and amendment before posting. Interfaces can also be set up purely for updating – Examples include stock costing information, credit limits, or nominal ledger budgets, et al.

ThinkLink allows you to pre-process and or filter any import files, apply arithmetic calculations including date manipulations, and even cross reference data from other relevant tables in Sage – such as customer names and addresses.

Originally developed for the Freight Forwarding industry's leading application software, Carlins Software Solutions has over 20 years experience with ThinkLink and now caters for a wide range of third party applications linking with Sage including Web sites, CRM, Schools, Tour Operators, Building Supplies, Restaurants, EDI, Property Management, Hire, Payroll Journals, Logistics, Point of Sale Systems, Delivery Outlet and Service Providers.





FOCUS THINKLINK INTERFACES

Typical Interfaces for Web Applications

Automatically handles Orders/Quotations from the website via secure SSL transport/HTTPS protocol into SOP or Telesales

Checks credit limits

Processes Sales Orders, Split Warehouse, Back Orders

Using make or buy flag will process Back-to-Back Orders

Full flexibility on Order Status

Processes Bundles

Associated Products & Products Pads from the Telesales module

Auto calculates delivery charges

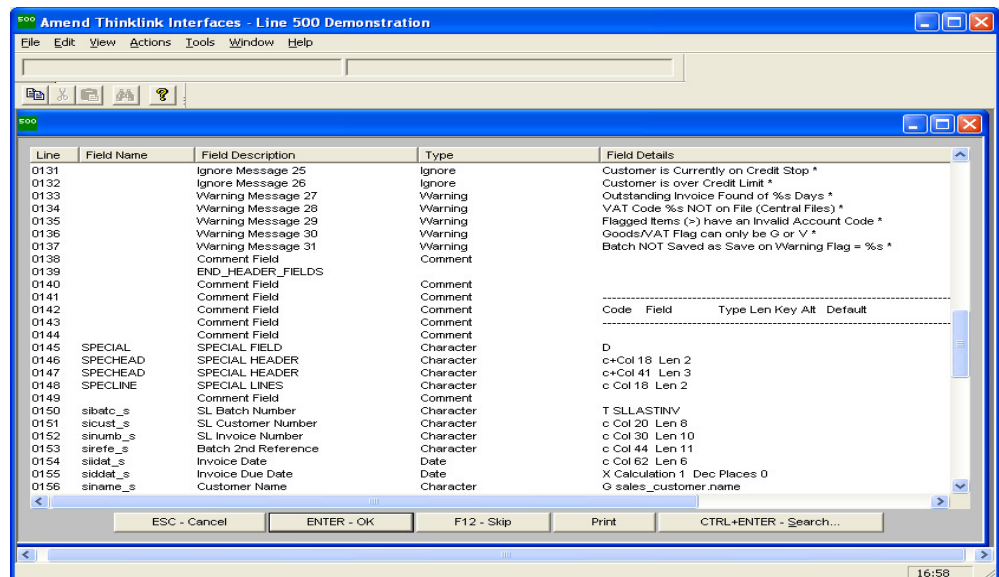
Lookup Sage system keys and if required update them

Collects data from associated tables, typically customer, supplier and stock

ThinkLink provides the only available mainframe class, secure and intelligent interfaces into Sage Line 200, Line500, Enterprise or CS3 as follows: -

- | | |
|--|---|
| <ul style="list-style-type: none"> S/L Accounts (Customers) S/L Invoice Batches S/L Cash/Journal Batches P/L Accounts (Suppliers) P/L Invoice Batches P/L Cash/Journal Batches N/L Accounts/Budgets N/L Journals C/B Receipts/Payments SOP Invoices/Credit Notes SOP Price Lists System Keys/Lookup Keys | <ul style="list-style-type: none"> SOP & POP Service Codes SOP Telesales POP Purchase Orders POP Receipts/Returns POP Purchase Invoices STK Master Stock Details STK Transactions/History STK Bin Locations J/C Job/Expense Codes J/C Transactions/History Payroll - Period Pay Details Resource Ledger - Time Sheets |
|--|---|

Sample ThinkLink Interface:





FOCUS THINKLINK PRACTICAL EXAMPLES

The best way to see the power of ThinkLink is to show a practical working example, here we will see the requirements of the Freight Forwarding Industry – there are over a dozen customers using this Interface alone.

Requirement: Information is being passed in 2 Files, Customers and Suppliers and then Invoices and Credit Notes.

Solution: ThinkLink has the ability to Filter incoming information so Customers are filtered and processed and then Suppliers are filtered and processed, ThinkLink can also chain together Interfaces and this is seamlessly done at runtime.

Requirement: The Due Dates are passed as the number of day's credit from the Invoice Date.

Solution: ThinkLink can perform calculations on numeric fields and date fields so the Due Date is simply the Invoice Date + X Number of Days.

Requirement: The VAT Codes are passed as a Number for both Sales and Purchase Ledger but my Sage System has different character codes.

Solution: ThinkLink has the ability to hold Lookup Codes so for example when VAT Code 2 is passed ThinkLink converts this to SV.

Requirement: The Nominal Ledger Codes are held differently to how we keep it on the Sage System.

Solution: ThinkLink can take and build any field from different parts of the Data Import File.

Requirement: The Customers Address is split into Road, Town, and Post Code etc and with a short address I don't want blank lines in my Sage System.

Solution: ThinkLink has various related functions such as Shuffling Blank Address Lines which are relevant to each Interface.

Requirement: I need to automate the software so details are automatically posted into Sage overnight.

Solution: This is easy on Unix/Linux sites but with MS Windows you will need an additional product, contact us for further details.

Carlins Software Solutions
Carlins
Warrendene Road
Hughenden Valley
High Wycombe
Bucks, HP14 4LY
United Kingdom

Tel: +44 (0)1494 563200
Email: sales@carlins.co.uk
Web: www.carlins.co.uk