



The Rock Rattler

www.larockclub.com

larockclub@gmail.com

Volume 42 Number 4
April, 2014

ATTENTION!!!!

We will have a work day at the shop on April 5, 2014.

Please everyone make arrangements to attend.

Be at the rock shop at 8 am.

*We are ready to move to next phase to start
work on the inside of the building.*

Next Meeting

When:	April 1, 2014
Time:	6:30 pm – 8:00 pm
Where:	Bossier City Library Historical Building Bossier City, La
Program:	Pearls
Refreshments:	Nina Hustus
Door Prizes:	Leland White

Minutes of Meeting

March 4, 2014

Opening:	Larry Maguire
Pledge of Allegiance	Antony Thomas
Prayer:	Al Simms

Business Discussed:

- Building Update
 - We need volunteers that can help get the buildings ready for use
- Field Trips
 - For the field trip for March 15, we will be going to Mt Ida to the Wegner mine
 - All money must be paid before meeting in March.
 - Waiver will also need to be signed.
 - Possible field trip to Copenhagen
 - Still pending dates
- Treasury Report given by John Autry
- Show dates are Aug 16-17
 - Del Glasner will be the Show Chairman
 - Del said we will increase number of vendors from last year
 - 14 dealers have confirmed
 - Hoping to have at least 28 vendors
 - Del was not in attendance to give further information
- Maker's Fair
 - April 12, 10 am – 6 pm
 - Request volunteers for at least 2 hour shifts
- Easter Seals
 - Silent Auction donation for April 25
- No speaker

Members in attendance: Sharron Thomas, Sue Autry, Nina Hustus, Antony Thomas, Leland White, John Autry, Gwynne Lowe, David Lowe, Diane Hendricks, Jody Hendricks, Lyn Simms, John McDonald, Sandra Talley, Larry Maguire, Jerry Thomas, Marjorie Thomas, Al Simms, Jeanette White, Dwain Spillman, Nancy Spillman, Kathey Haney, Linda Leedom, John McDonald III New Members Susan Burns, Rylee Paul

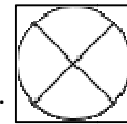
Sign up at the meeting to man the AGMS booth at the Maker's Fair on April 12.



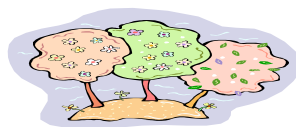
tips and tricks

Make a quick sanding pad

On pieces of heavy cardboard, or 1/8 inch plywood draw square boxes 6 inches square. Draw lines from corner to corner--the X indicates exact center.



With the awl punch a small hole in the center of each disc. Stiffen the holes and the area around them with shellac, nail polish, or epoxy glue. When this is dry, cut a round disc from each square using a heavy-duty hobby-knife. Also, cut discs from several different grits of sandpaper but be sure to have at least a 150 grit and a 400 grit. NOTE: Five or six inch discs are recommended because you can find ready cut sandpaper or fabric discs of these sizes at your hardware store. Using contact cement, glue the sandpaper to the plywood or cardboard discs. You may want to put a different grit paper on each side of a disc to save time. When finished, write the grit on the surface of the disc with a laundry marker.



Field Trips for 2014

Anyone planning to attend a field trip must notify field trip coordinator that you will be attending.

If you are unable to attend a field trip but would like something brought back just ask. Arrangements can be made.

April 12----N. Sulfur River – Fossils and petrified wood

June 14----Mississippi – Homachita River. Banded Agate

July 12----Ashdown, AR – Fossils

August 23, 24 (tentative date--waiting on confirmation from host group)

Jasper, Tx – Petrified Wood. Fee of \$30 must be paid by June meeting

September and October- Open—if you have an idea give info to field trip coordinator

Upcoming Show Dates

April

12—NORTH LITTLE ROCK, ARKANSAS: Annual show; Central Arkansas Gem, Mineral & Geology Society; Elder Johnson Pavilion, Burns Park; Military Dr.; Sat. 9-4; free admission; buy, sell or trade rocks, minerals or fossils; contact Mike Austen, PO Box 241656, Little Rock, AR 72223, (501) 868-4553; e-mail: steelpony@aol.com; Web site: www.centralarrockhound.org

18-20—ALPINE, TEXAS: 25th Annual Show; Chihuahuan Desert Gem & Mineral Club; Alpine Civic Center; 801 W. Holland Ave., between 12th St. and 13th St.; Fri. 9-6, Sat. 9-6, Sun. 10-5; free admission; indoor and outdoor dealers, rough and finished rock, fossils, mineral specimens, beads, jewelry, demonstrations, special displays, kids' activities, silent auction, door prizes, grand prize; contact Paul Graybeal, PO Box 1111, Alpine, TX 79831, (432) 729-4526; e-mail: paulgraybeal@moonlightgemstones.com

25-27—HOUSTON, TEXAS: Annual show; Fine Mineral Shows; Embassy Suites Hotel; 2911 Sage Rd., near The Galleria-Houston; Fri. 10-6, Sat. 10-6, Sun. 10-5; free admission; more than 50 dealers, minerals, fossils, gems, jewelry; contact David Waisman, PO Box 8543, Spokane, WA 99203, (509) 998-5987; e-mail: dave@finemineralshow.com; Web site: www.FineMineralShow.com

May

3—ARLINGTON, TEXAS: Annual Club swap meet; Arlington Gem & Mineral Club; clubhouse; 1408 Gibbins Rd.; Sat. 7-4, Sat. 7-4; free admission; buy, sell or swap, rocks, gems, finished jewelry, rough, slabs, faceting material; contact Val Babineaux, 213 Adams Dr., Crowley, TX 76036, (817) 538-0571; e-mail: Acadian1@sbcglobal.net

23-25—GULFPORT, MISSISSIPPI: Annual show; Harrison County Gem & Mineral Society; Courtyard Marriott; 1600 E. Beach Blvd.; Fri. 10-6, Sat. 10-6, Sun. 10-4; adults \$5, children (10 and under) free with adult; demonstrations, displays, Stump the Expert, hourly door prizes; contact Karen Johnston, 9037 Fricke Rd., Bay St. Louis, MS 39520, (228) 467-5465; e-mail: johnstonkaren@bellsouth.net

24-25—FORT WORTH, TEXAS: 62nd Annual Show; Fort Worth Gem & Mineral Club; Will Rogers Memorial Center; Amon G. Carter Exhibit Bldg., 3401 W. Lancaster; Sat. 9-6, Sun. 10-5; adults \$5, seniors and students \$4, children (under 16) free; more than 25 dealers, jewelry, beads, gems, minerals, fossils, silent auction, Kids' Corner, Rock and Fossil Dig, Wheel of Chance, door prizes; contact Steve Hilliard, PO Box 418, Decatur, TX 76234, (817) 925-5760; e-mail: fwgmc@embarqmail.com; Web site: www.fortworthgemandmineralclub.org

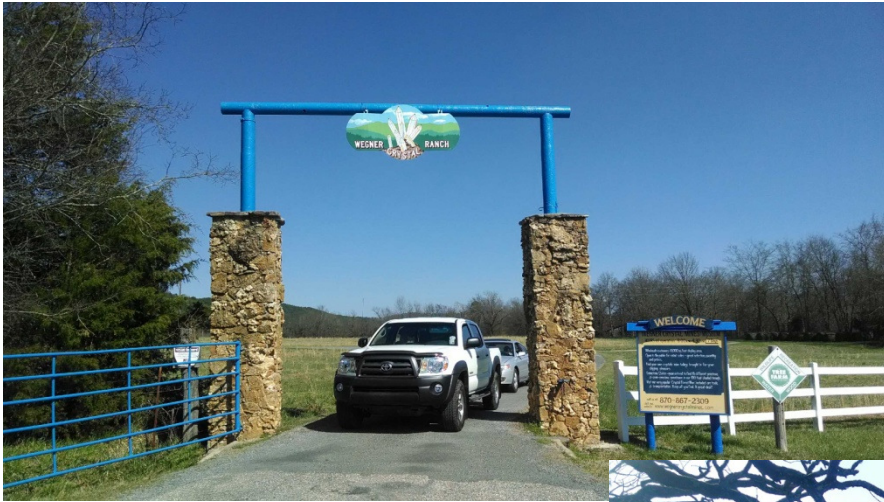
June

7-8—GRAPEVINE, TEXAS: Annual show; Arlington Gem & Mineral Club; Grapevine Convention Center; 1209 S. Main St.; Sat. 8-6; adults \$3; contact Kris Kister, 1813 Arthur Dr., Colleyville, TX 76034, (817) 545-7239; e-mail: Krisk@kirstnerphotogrhy.com

July

26-27—FARMERS BRANCH, TEXAS: Annual show; Corporate Employees Recreation Assn.; Brookhaven College; 3939 Valley View Ln., Bldg. H; Sat. 10-5, Sun. 10-5; free admission; indoor show; contact Steve Shearin, 860 Stafford Station Dr., Saginaw, TX 76131, (817) 777-1997; e-mail: steve.l.shearin@lmco.com; Web site: www.2oldcurmudgeons.com/cera-show.htm

Wegner Mine Field Trip Pics







2014 Officers and Board Members

Position	Name	Contact #	Email Address
President	Larry Maguire	(318) 284-3544	oldhd68@gmail.com
V. President	Antony Thomas	(318) 518-0907	adslthomas@gmail.com
Secretary	Sharron Thomas	(318) 423-2130	adslthomas@gmail.com
Treasurer	John Autry	(318) 210-9416	john.autry451@gmail.com
Board Member	Edna House	(318) 949-9765	edna.house@gmail.com
Board Member	Nina Hustus	(318) 219-9136	pochance@bellsouth.net
Board Member	Lyn Simms	(318) 347-8621	lynsimms@gmail.com
Field Trip Coordinator	Antony Thomas	(319) 518-0907	adslthomas@gmail.com

The Rock Rattler is a monthly publication of the Ark-La-Tex Gem and Mineral Society located in Bossier City/Shreveport, Louisiana. The society is affiliated with the American Federation of Mineralogical Societies (AFMS) and the South Central Federation of Mineralogical Societies (SCFMS). Permission is given to reproduce this document all or in part with the proper credit given. Articles with no byline are by the editor.

The Ark-La-Tex Gem and Mineral Society is a nonprofit educational organization devoted to promoting interest in the various earth sciences, particularly the art of lapidaries and their related fields. Informational speeches presented at area schools and the presentation of awards and cash prizes at the Public School Earth Science Fair are two of the ways the society achieves its goals. Another contribution to the community is the annual show, held at the Bossier Civic Center, 620 Benton Rd, in Bossier City. This "Jewelry, Gem, & Mineral Show" functions as a fund raiser for our group and a venue for the demonstrations of gold and silver casting, jewelry making, bead stringing, faceting, cabochon making, and flint knapping (the art of flaking stone tools such as arrowheads). The monthly meetings included programs of interest to rock hounds, information from the Rock Rattler, and jewelry making classes complete the educational objectives of the club.

Arklatex Gem & Mineral Society
PO Box 6633
Bossier City, LA 71171-6633