

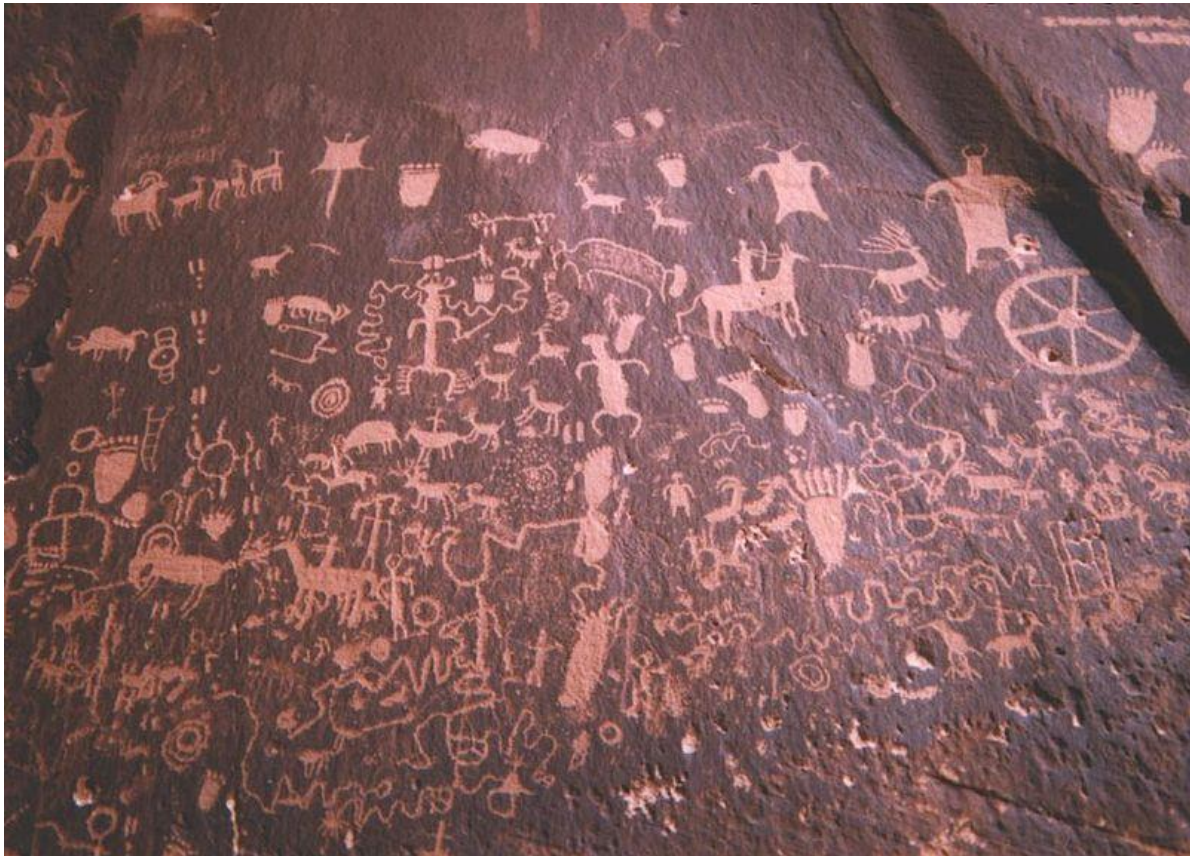
# THE ROCK RATTLER

PUBLISHED MONTHLY BY

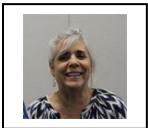
THE ARK-LA-TEX GEM AND MINERAL SOCIETY

VOLUME: 46

NO. 4



## Presidents Message - by Nina Hustus



### Presidents Message April

While trying to come up with a topic for this message I started thinking about the last meeting and how I had to leave early and how wonderful it was that Bill Eeds and Lyn Simms were able to take over and run the show. This made me realize how grateful I am for the members of this club. This club is OUR club and not just one person's to run. So many members have participated in bringing in items for discussion or as door prizes, and have spoken up with ideas they have to help make this the best club it can be. I can't possibly say it enough, "Thanks." To all those people who show up to our meetings, who contribute ideas and laughs. Let's keep helping each other however we can, let's keep making the club our best. Please feel free to

share any and all ideas you may have about programs, the shop, our annual show, or anything. All the members want to hear from you! Thank you!

**Minutes** for 2/6/18 - by *Laura McWilliams*

Gem and Mineral Club March Meeting 6:06pm Shady Grove Library

- ❖ Nina leaving at 6:30pm and Bill will lead the meeting
- ❖ Need more show and tell – get members involved
- ❖ Shop Schedule set through 4-7-18
  - 3-10-18 Laura McWilliams
  - 3-17-18 Nina Hustus
  - 3-24-18 Lyn Sims
  - 3-31-18 Tom Stringfellow – Wire Wrapping Class
  - 4-7-18 Del Glasner
- ❖ Need workers for booth at Texas Ave Makers Fair
- ❖ Talked about T-shirts
  - Bill asked for a count of how many shirts were needed to get quote from his contact
  - Laura also knew someone and will get a quote from them
- ❖ Talked about turning library into a work area by getting rid of copier
  - Laura knew some people who might come get the copier and was told to look into it
- ❖ Tony told about some property off of 3132 for sale by Bell Cherry Properties

Meeting started with Pledge of Allegiance

Larry Mcguire offered up prayer

Treasurer Report

Beginning Bal.	\$16528.28
Deposits	\$690.00
Expenses	<u>\$385.56</u>
Ending Bal.	\$16832.72

Tony gave options for field trip 4-14-18

1. Houma Chita River (Please check with Tony or someone about spelling) – Natchez, MS – Banded Agate.

2. Midlothian – 2 locations (sorry did not get more info)

Don't remember where it was decided to go, check with Tony (I am a horrible secretary)

Tony is working on a new location – a new quartz mine in Arkansas

Welcomed new members

Looking for contractor to put in culvert or drain at workshop

Bill had the rock of the month and gave an awesome presentation on the Blarney Stone.

Lyn gave the program in Nina's place on How to Identify Gems and Minerals

Told how the jewelers loop was patterned by the GIA

Told about e-learning classes

Told about the William Holland School of Lapidary

- Told about some Facebook groups
  - Cabs and Slabs
  - Rock Hound Connection
  - All about Rocks
  - Rock Hound

Gave out door prizes.

**NEXT MEETING: "Old Location" Bossier Historical Center**  
**Tuesday April 3 Meeting 6:00pm till 7:30 pm**

**Program :** – Fossil Jewelry – By Del Glasner



**Field Trip:** -



Midlothian Quarry for Sharks teeth, Clam shells, Corals, Septarian nodules, Pyrite clusters on April 14 if you would like to join us.

**Midlothian** is 25 miles southwest of **Dallas** and 207 mi (3hrs) from Bossier Historical Center.

Midlothian became a prime area for cement quarrying due to the Austin Chalk Escarpment, a unique geological formation that runs north-south through the city. Three of the top ten largest cement factories in the United States operate in the city: **TXI**(formerly Texas Industries), **Holcim**, and Ash Grove. **Gerdau Ameristeel**, formerly Chaparral Steel, a large steel factory, is adjacent to TXI's cement plant.

**Details:**

Field Trip for April is to TXI concrete plant in Midlothian, Texas.

Saturday April 14th leaving at 5am promptly from the Bossier City Historical Center where we normally hold our meetings. We will be digging from 9-12.

We need a confirmation head count and t-shirt sizes for all attendees because the plant now provides fossil t-shirts at time of visit. Cost is attendees will split the cost of a large gift basket for the guide. No one will get in after the club enters the plant so carpooling is encouraged. Call Tony if you have any questions.

Pleaseeeeeee RSVP to Tony - [adslthomas@gmail.com](mailto:adslthomas@gmail.com)

## Member Spotlight: Del Glasner

1. Where were you born and raised?

*Born at Barksdale AFB and raised all over the U.S. but mostly Shreveport. My wife and I left Shreveport in 1968 to find work in Houston after the loss of a military contract. We returned to Shreveport almost to the day forty years later after retiring in Colorado.*

2. What started your interest in rocks?

*As a four year old I found gravel shapes like cars and airplanes along our street to play with. Became a rockhound with my first trip out west with my grandparents. Smuggled petrified wood out of the Petrified National Forest in grandma's bra.*

3. What was your favorite rock experience, rock adventure?

*As a kid our family lived down range from Edwards AFB in the Mojave desert of California. I would wander away from our house to the nearby mountains and prowl into deserted mines to advance my collection. Sometimes I would use up some of my nine lives in these excursions.*

4. Other than rockhounding and lapidary what are your other interests?

*Enjoy fishing for Catfishing in the nearby Cypress Lake, Panning for gold in the mountain streams of Colorado. Metal detecting at any opportunity. Backpacking to flyfish the high mountain lakes of Colorado.*

5. The wisest thing anyone has ever told me was?

*"Fight to win using whatever you have available".*

6. I am happiest when\_\_\_?

*Sipping a cup of coffee beside my wife.*



## Rock of the Month: - Fools Gold



## Upcoming Classes & Demonstrations

Demos Sat. April 28 1:00 pm *Filigree Jewelry*



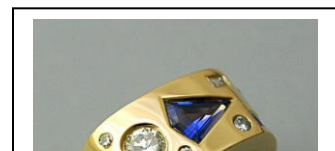
Demos Sat. May 26 1:00 pm Enameling



Link:

<http://larockclub.com/workshop/>

## Classes:



## Stone Setting

\$165 ~ 2 days ~ April 14 & 15, 2018

Instructor: Tom Stringfellow

Starting with prong set, we will initiate our adventures into stone setting! Then tube set, and finally flush set! We will not be making a piece, but learning how we can add faceted stones to your future work. All tools and supplies are included. Bring your binocular magnifying glasses, if you have them.

### Member Photos

#### Lauren Brown



#### Del Glasner – Metal detecting finds



**Sale** - April 7 Kieth Harmon Sale, Open 9:00am Address 9116 US Hwy 84 West, Rusk, Texas

### **Shows**

April

**7-8—SILOAM SPRINGS , ARKANSAS:** Annual show; Northwest Arkansas Gem and Mineral Society , Siloam Springs Community Building; Mt Olive Street; Fri. 9-5, Sun. 10-4; Adults \$3; Demonstrations, displays, silent auctions, door prizes. ; contact Dave Leininger, 14029 White Oak Lane, Bentonville, AR 72712, (479)-721-1579; e-mail: hulagrub@aol.com; Web site: www.nwarockhounds.org

**14-15—ABILENE, TEXAS:** Annual show; Central Texas Gem & Mineral Society, Abilene Convention Center; N 6th & Pine; Sat. 10-6, Sun. 10-4; Admission \$3, Children 6-12, \$1.50; under 6 & Scouts and Military in uniform free; Central Texas Gem & Mineral Society. Exhibits, Wheel of Fortune, dealers, fossils, rare minerals, cut and uncut gems, fluorescent display, lapidary supplies and rough, jewelry making equipment, beads, Crack your own Geode, Silent Auction, door prizes, grand prize drawing; proceeds benefit scholarship program. ; contact Kay McDaniel, 3118 Woodglenn Cove, Abilene, TX 79606, (325)-668-8558; e-mail: kmcdaniel23@suddenlink.net; Web site: www.new.calichetimes.com

## May -South Central Federation Show

**5-6—LUBBOCK, TEXAS:** Show and sale; Lubbock Gem and Mineral Society, Lubbock Memorial Civic Center; 1501 Mac Davis Lane; Sat. 10-06, Sun. 10-05; Adults \$4, Seniors \$3, Students \$2, Children Free; 60th Anniversary show; This year the Lubbock Gem & Mineral Society is Hosting the South Central Federation Convention (SCFMS). Vendors with Jewelry, Loose Stones, Rough, Cabs, Slabs, Geodes, Beads, Gemstones, Mineral Specimens, Crystals, Fossils, Spheres, and Lapidary Tools. Hourly door prizes. Drawings for two grand prizes, one for Kids and one for Adults. Numerous display cases and large rocks in our "rocks you can touch" area! Our kid's area will have games and grab bags, and we will feature our new fluorescent tent with rocks that "glow in the dark". Proceeds support the LGMS (501(c)(3) organization), and scholarships in the Earth Sciences at Texas Tech.; contact Walt Beneze, PO Box 6371, Lubbock, TX 79493; e-mail: walt@lubbockgemandmineral.org; Web site: www.lubbockgemandmineral.org

**26-27—FORT WORTH, TEXAS:** Annual show; Fort Worth Gem and Mineral Club, Will Rogers Memorial Center; 3401 West Lancaster; Sat. 10-6, Sun. 10-5; Adults \$5, Seniors/Students \$4, Children 16 and under free; Gem, mineral, fossil, bead & jewelry shop ; contact Janice Craddock, PO Box 123975, Fort Worth, TX 76116; e-mail: fwgmc.info@gmail.com; Web site: www.fortworthgemandmineralclub.org

**30-1—GRAPEVINE, TEXAS:** Annual show; Arlington Gem & Mineral Club, Grapevine Convention Center; 1209 S. Main Street; Sat. 9-6, Sun. 10-5; Adults \$6, Seniors/Students/Children \$5; 61st Annual Show will feature Vendors selling artisan and fine jewelry, gemstones, geodes, fossils, minerals, rough- cut- polished rocks, paleontological books, crystals, petrified wood, tools, glass creations, beads and much more. Members will be demonstrating jewelry designs, teaching 9 on-site jewelry classes, Identifying Gemstones, hosting a Silent Auction every hour, door prizes, raffle prizes, and offering activities to Juniors. Check us out on Facebook or our website for more details.; contact Nadira Charaniya, 1408 Gibbins Rd., Arlington, TX 76011, (469)-751-2944; e-mail: show@agemclub.org; Web site: www.agemclub.org

## Aug

**11-12—GONZALES, LOUISIANA:** Annual show; Baton Rouge Gem & Mineral Society, Lamar Dixon Expo Center-Trademart Building; 9039 S St Landry Ave; Sat. 10-5, Sun. 10-5; Admission \$5, Children ages 5-12 \$3 ; Demonstrations, door Prizes all day, silent auctions going on both days. Scouts and educational groups are welcome. Vendors will be selling rock specimens, fossils, minerals, tools & jewelry ; contact Wanda Gawarecki, LA, (225)-603-9234; e-mail: mercymom3@gmail.com; Web site: www.brgemandmineral.org

**18-19—BOSSIER CITY, LOUISIANA:** Annual show; Arklatex Gem & mineral Society, Bossier City Civic center; 620 Benton Rd; Sat. 9-6, Sun. 10-4; Admission \$4., Students free w/ I.D., Children free under 6 yrs; 44th annual show. Custom and unique Jewelry, Beads, Gems and Minerals, Fossils,demonstrations on how to convert a rough mineral into a piece of wearable or displayable jewelry or art; making cabochons from rough slabs; a step-by-step guide to the process of faceting; how-to instruction on the use of equipment; presentations on "knapping," the ancient art of arrow-head making, and more. There will be a kids' scavenger hunt on Saturday with prizes for the first 60 participants. Door prizes will be awarded hourly throughout the event. Educational exhibits, Free parking and refreshments will be available for purchase. ; contact Del Glasner, P.O. Box 6633, Bossier City, LA 71171-6633, 318-517-7372; e-mail: larockclub@gmail.com; Web site: larockclub.com

## INFO :

### TIPS:

Though most people think of California when they think of America's gold rush, the North Georgia mountains were the site of the first gold rush in the United States. Mines operated there continuously from the early 1800s until 1933, and even though the mines aren't operational anymore, prospectors can still find flakes of gold in the nearby mountain streams. Panning for gold remains big business, and you can pan for the coveted metal at former mountain mines in Georgia.

**Don't Buy A Rock Hammer Until AFTER You Buy Eye Protection.** Seriously. It only takes one swing of a rock hammer - by you or someone close by - and you could lose an eye. In addition, the reality is that there are a lot of tools that are far more useful to a beginning rockhouser than a rock hammer (e.g., a loupe, a map, a first aid kit, safety gear).

### **Websites to look at:**

#### **Rockhound Tips**

[http://www.iminethem.com/rockhounding\\_tips.html](http://www.iminethem.com/rockhounding_tips.html)

#### **Tips and tricks for Rockhounds**

<https://www.mindat.org/article.php/1782/Tips+and+Tricks+For+Rockhounds>

### **Officers for 2018:**

**President – Nina Hustus** pochance@bellsouth.net 318-464-2870 Shreveport, La

**Vice President – Bill Eads** wceeds@me.com 303-859-5821 Spring Hill, La

**Secretary – Lauren Brown** lauren@animationnerd.com 318-678-61119 Bossier City, La

**Treasurer – John Autry** john.autry451@gmail.com (318) 210-9416 Haughton, La

**Board Member – Lyn Simms** lyncsimms@gmail.com 318-865-2453 Shreveport, La

**Board Member -**

**Board Member - Tom Stringfellow** TomString@aol.com 903-839-6744 Troup, Tx

Others:

Field Trip Coordinator – Tony Thomas

Head Shop Steward – Laura McWilliams

Show Chairman – Del Glasner

Newsletter Editor – Del Glasner

Send in photos of your craftwork or comments via email: [larockclub@gmail.com](mailto:larockclub@gmail.com)  
Facebook – <https://www.facebook.com/ArkLaTexGemMineralSociety/>  
Website - <http://larockclub.com/>