



# The Rock Rattler

www.larockclub.com

larockclub@gmail.com

Volume 41    Number 7  
July, 2013

## Presidents Message

Shreveport library allowed me to exhibit some rocks to go with their summer reading program about things from the earth. Went back this last weekend and while packing them up it was like finding something I had lost. On behalf of the Arklatex G&M I enjoyed speaking at two of Shreveport's library's about a favorite subject of mine, Rock Collecting. I encourage all of you to agree at any opportunity to do so also. I'm sure some of you have done some rock collecting in hot weather here. I am looking for some "stop leak" because my skin leaks.

*Del Glasner, President*

### Next Meeting

When: July 2, 2013  
Time: 6:30 pm - 8:00 pm  
Where: Bossier City Library  
Historical Building  
Bossier City, La  
Program: Lyn Simms will speak about opals

### Inside this Issue

Class Schedule  
Upcoming Shows  
Upcoming Classes  
Field Trip Schedule

**Minutes of Meeting  
June 4, 2013**

**Opening:** Del Glasner

**Pledge of Allegiance** Wil House

**Prayer:** Wil House

**Old Business:**

- Federation Show update
  - Competitive Displays. You can find info on our website if you are interested in showing.
  - 2 spaces left
  - 25 vendors have sent in contracts
  - Need ideas for pins by June 15 so we can have time to have them made
- Treasury Report

**New Business:**

- Field trip to Branson Missouri. If interested get with Tony
- Wil House gave presentation on an idea to get with Evergreen Life Ministries and see if they have some land that we could use to build.
  - Concerns were discussed and it was voted that we gather more info to see if this is something that the club would want to pursue
- Casting class will be held on July 27. Not sure where it will be held. Multiple people have offered their homes.
- October 5—field trip to South Baton Rouge
- Larry gave presentation on his trip to Idaho

**Members in Attendance** –Sharron Thomas, Antony Thomas, Del Glasner, John Autry, Sue Autry, Leland White, Jeannette White, Don Gednetz, Nina Hustus, Larry Maquire, Milton Bauldree, Wil House, Dwain Spillman, Edna House, David Lowe, Gwynne Lowe, Marjorie Thomas, Jerry Thomas, Reagan Ryan, Diane Hendricks, Angela Pursley, Reedy Pursley, Brandon Smith, William Stevenson, Heather Cregut, Teresa Crawford

## *Class Dates*



July 27—Lost Wax Casting. If interested, please let Del know.

# tips and tricks

## **INVISIBLE COPPER SOLDER JOINTS** - June '13

Rather than deal with copper solder when soldering copper pieces, you can use regular silver solder instead. Easy solder is best, to prevent more oxides from forming on the copper than necessary. When placing the piece in your pickle, include a piece of binding wire. The steel wire causes the free copper oxides in the pickle to plate the silver of the solder joint, making it much less visible. Just remember to remove the binding wire from your pickle after you're done, or you'll plate the next piece of silver you work on, as well!

## **TRANSFER DESIGNS FROM COMPUTER TO METAL** - February '11

If you create flat designs on your computer (using Adobe Illustrator or any other graphics program), here's any easy way to transfer those designs to your metal sheet for cutting. Load a sheet of labels in your printer. The size of the label will depend on the size of your design. You can get labels in a wide variety of sizes... even as a full 8.5" x 11" sheet. Simply print your design on the label sheet as many times as you need (this tip is great for creating matching earring components), then stick the label to your metal. You can cut right through the label without worrying about the paper moving or smudging lines..

[http://www.contenti.com/resources/tips/index.html?utm\\_source=Contenti+eNewsletter&utm\\_campaign=63ca7f6ca1-October\\_eNewsletter\\_3%2Bstars&utm\\_medium=email](http://www.contenti.com/resources/tips/index.html?utm_source=Contenti+eNewsletter&utm_campaign=63ca7f6ca1-October_eNewsletter_3%2Bstars&utm_medium=email)

# Gemdat.org

by Carolyn Weinberger

from *Gem Cutters News* 4/2013 from *The Backbender's Gazette*, June 2013 (Houston G&MS)

If you are interested in minerals, you already know the best source of information about them on the Internet is a site called <**mindat.org**>. Continually being up dated, this site contains a vast amount of information along with numerous photographs about almost all the minerals that have been identified (approximately 41,992 as of this writing).

Now there's a companion site, sponsored by the same folks as Mindat called <**Gemdat.org**> that's dedicated to providing information about gemstones and gemology.

I encourage you to visit the site. To date, 498 data pages on gemstones have been posted and the site is growing almost daily as additional information and photographs are added.

Interested in topaz? Type in the name and you'll be transported to a page showing information about it plus all the colors that it's available in. Click on a specific photo and you'll have an instant enlargement of a faceted or cabochon cut gemstone. Or just click on the "photo" button and you'll get a full gallery of the photos that have been posted thus far.

Scroll further down on the main topaz page, and you'll find some of the more technical data about the gem including chemical formula, optical properties, localities where the gems are mined, and the various treatments that have been given to the natural stones to enhance their beauty.

Like its companion Mindat, Gemdat.org is an interesting and useful site. One caution though—don't expect to take a quick peek and log off—you'll get hooked like I did.

## Field Trips for 2013

Anyone planning to attend a field trip must notify field trip coordinator if you will be attending.

If you are unable to attend a field trip but would like something brought back just ask. Arrangements can be made.

*July 13, 2013* – North Sulfer River, Paris, Tx to search for fossils

*August 24, 2013* – Jasper Gem & Mineral Society show

*September, 2013* – Midlothian Texas. Updates to follow

*October 5, 2013* – South LA with Ike House for river agate

*Nov 3-4, 2013* – Midland Gem & Mineral Society show

---

# Upcoming Show Dates

## August

10-11—BATON ROUGE, LOUISIANA: Annual show; Baton Rouge Gem & Mineral Society; Baton Rouge Marriott; 5500 Hilton Ave.; Sat. 10-5, Sun. 10-5; adults \$4, students (12 and over) \$3, children (6-11) \$2, Scouts in uniform \$1, veterans free with military ID; demonstrations, cabbing, faceting, wire wrapping, door prizes, silent auctions; contact Diana Martin, (225) 931-7543; e-mail: [Cajunladi@cox.net](mailto:Cajunladi@cox.net); Web site: [Brgemandmineral.org](http://Brgemandmineral.org)

24-25—JASPER, TEXAS: 19th Annual Show; Pine Country Gem & Mineral Society; The Event Center; 6258 Hwy. 190W, five miles west of Jasper; Sat. 9-5, Sun. 10-5; adults \$3, free, students and children free; spinning wheel, silent auction, lapidary demonstrations, hourly door prizes, grand prize raffle, student prize, petrified wood field trip; contact Ann James, 2738 FM 92 S., Woodville, TX 75979, (409) 429-7444; e-mail: [earthscache3@yahoo.com](mailto:earthscache3@yahoo.com); Web site: [www.pinecountrygms.org](http://www.pinecountrygms.org)

## September

14-15—GRAPEVINE, TEXAS: Annual show; Arlington Gem & Mineral Club; Grapevine Convention Center; 1209 S. Main St.; Sat. 10-6, Sun. 10-5; adults \$8; silent auctions, gem identification, demonstrations, door prizes, grand prize, Kids' Korner, displays, class information, 27th annual Grapevine Grapefest nearby; contact Randall Lantz, 1408 Gibbins Rd., Arlington, TX 76011; e-mail: [show@agemclub.org](mailto:show@agemclub.org); Web site: [www.agemclub.org/events.php](http://www.agemclub.org/events.php)

## October

11-13—MOUNT IDA, ARKANSAS: 29th Annual Quartz, Quiltz and Craftz Show; Mount Ida Area Chamber of Commerce; Montgomery County Fairgrounds; Fairgrounds Rd.; Fri. 9-5, Sat. 9-5, Sun. 10-4; free admission; dealers, quartz crystals, minerals, jewelry, quilts, crafts, Treasure Hunt; contact Mount Ida Area Chamber of Commerce, Hwy. 270 W., Mount Ida, AR 71957, (870) 867-2723; e-mail: [director@mtidachamber.com](mailto:director@mtidachamber.com); Web site: [www.mtidachamber.com](http://www.mtidachamber.com)

18-20—AUSTIN, TEXAS: Annual show; Austin Gem & Mineral Society; Palmer Events Center; 900 Barton Springs Rd.; Fri. 9-6, Sat. 9-6, Sun. 10-5; adults \$5, seniors \$4, students (13-18) \$1, children (12 and under) 50 cents; Wheel of Fortune, gem mine, fluorescent cave, touch table, educational exhibits, demonstrations; contact Susan Postlethwait, 6719 Burnet Ln., Austin, TX 78757; Web site: [www.austingemandmineral.org](http://www.austingemandmineral.org)



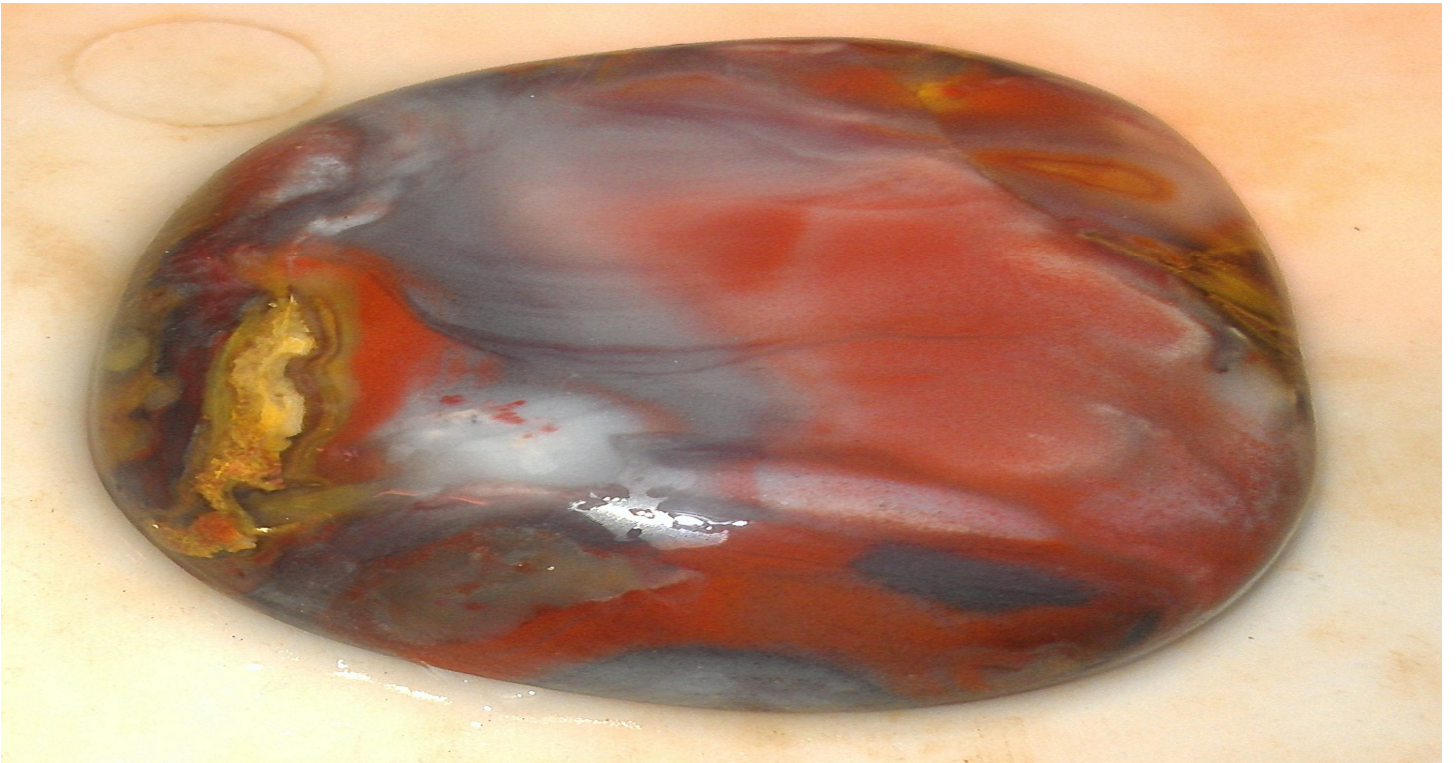
# Branson Missouri



**Polished Mozarkite found in Lincoln County Missouri**



**Polished Mozarkite found in Lincoln County Missouri**



**Polish Mozarkite found in Lincoln County Missouri**



**Polished Mozarkite found in Lincoln County Missouri**





The view while driving to Lincoln County Missouri



The view while driving to Lincoln County Missouri





**View from our room**



**Another view from our room**





Display of Mozarkite



Siteseeing in Branson



Sightseeing in Branson



## OFFICERS

President

Del Glasner

Home (318) 965-1989

Cell (318) 517-7372

Dglasner2001@yahoo.com

Vice President

Larry Maguire

Cell (318) 284-3544

Wood@centurytel.net

Secretary/Editor

Sharron Thomas

Cell (318) 423 2130

adslthomas@gmail.com

Treasurer

John Autry

(318) 210-9416

John.autry451@gmail.com

Tom Stringfellow

Board Member

(903) 839-6744

tomstring@aol.com

Antony Thomas

Board Member

Field Trip Coordinator

(318) 518-0907

adslthomas@gmail.com

Lynn Simms

Board Member

(318) 865-2453

lynsimms@gmail.com

Will House

Historian

The Rock Rattler is a monthly publication of the Ark-La-Tex Gem and Mineral Society located in Bossier City/Shreveport, Louisiana. The society is affiliated with the American Federation of Mineralogical Societies (AFMS) and the South Central Federation of Mineralogical Societies (SCFMS). Permission is given to reproduce this document all or in part with the proper credit given. Articles with no byline are by the editor.

The Ark-La-Tex Gem and Mineral Society is a nonprofit educational organization devoted to promoting interest in the various earth sciences, particularly the art of lapidaries and their related fields. Informational speeches presented at area schools and the presentation of awards and cash prizes at the Public School Earth Science Fair are two of the ways the society achieves its goals. Another contribution to the community is the annual show, held at the Bossier Civic Center, 620 Benton Rd, in Bossier City. This "Jewelry, Gem, & Mineral Show" functions as a fund raiser for our group and a venue for the demonstrations of gold and silver casting, jewelry making, bead stringing, faceting, cabochon making, and flint knapping (the art of flaking stone tools such as arrowheads). The monthly meetings included programs of interest to rock hounds, information from the Rock Rattler, and jewelry making classes complete the educational objectives of the club.

**Arklatex Gem & Mineral Society**

**PO Box 6633**

**Bossier City, LA 71171-6633**