



The Rock Rattler

www.larockclub.com

larockclub@gmail.com

Volume 41 Number 6
June, 2013

Presidents Message

Took a little vacation and visited South East Kansas a couple of weeks ago for our Grand Daughters Graduation. We were welcomed with Tornado Sirens blaring and we took cover. Forgot my hard hat and catcher's mitt for the large hail stones we saw bouncing off the ground. Picked up some chunks of flint from the Flint Hills of Kansas. Decided to go way around Oklahoma on the way back thru New Mexico. Stopped in the Valley of Fire and collected some Lava, and visited a rock shop. Proceeded on down to Truth or Consequences to collect Candy Rock and to visit some good friends. Purchased a large palm straw hat to keep the 103 deg sun of this thinning hair head of mine. Humidity has a nice 5 percent. Pushed on to the Rock Show in Ft Worth and met up with a few members from our club. Purchased a few rocks I just had to have while my Wife spent her money on some Amber Jewelry. Did find a new dealer for our show to fill a cancelation .

Next up I will be setting up a display in the Broadmoore Branch library in prep for talk on Rock Collecting June 11 at 2:00pm and another one at the Hamilton Branch June 4 at 10:00am. This is part of their Summer Adult Reading Program. Looking forward to our Club field trip to Lincoln Missouri to Collect Mozarkite. (Colored Chert). Hope to see you there.

Del Glasner

Next Meeting

When: June 4, 2013
Time: 6:30 pm - 8:00 pm
Where: Bossier City Library
 Historical Building
 Bossier City, La
Program: Larry's trip to Idaho (see a preview of
 findings in newsletter)

Inside this Issue

Class Schedule
Upcoming Shows
Upcoming Classes
Field Trip Schedule

Ark-La-Tex Gem & Mineral Society

Minutes of Meeting
May 7, 2013

Opening: Del Glasner
Pledge of Allegiance Antony Thomas

Old Business:

- Federation Show update
 - Competitive Displays. You can find info on our website if you are interested in showing.
 - 2 spaces left
 - 23 vendors have been invited. Still waiting on most to send application and money
- Treasury Report

New Business:

- Field trip to Ft Worth GMS show on May 25 , 2013. Meet at library at 7 am.
- Geodes will be donated to earth science classes at local elementary schools
- Ron Colemans mine donated a basket to the club for a door prize at show
- Option was brought up to contact the Smithsonian Institute to send a specimen
- Need idea for a lapel pin for our show
- Update on field trip given by Tony
- Larry gave a presentation on salt domes

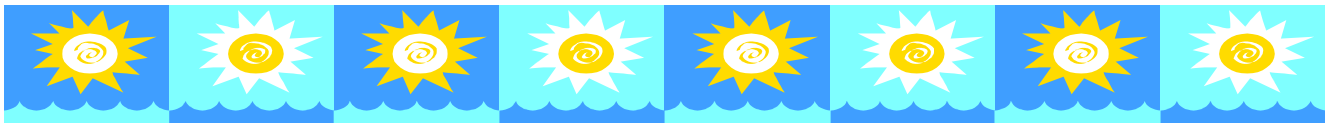
Members in Attendance –Sharron Thomas, Antony Thomas, Del Glasner, John Autry, Sue Autry, Linda Leedom, Leland White, Jeannette White, Lyn Simms, Don Gednetz, Nina Hustus, Larry Maquire, Milton Bauldree, Wil House, Dwain Spillman, Nancy Spillman, Edna House, David Lowe, Gwynne Lowe, Sally Moyers, Catherine Moyers, Kathy Haney, Marjorie Thomas, Jerry Thomas, Adrienne Abraham, Reagan Ryan, Diane Hendricks

Class Dates



Saturday – June 9, 2013 – Introduction to Flame Worked Beads. Instructor – Tom Stringfellow. 1 day Class. Fee \$100.

Saturday and Sunday – July 13, 14, 2013 – Etching. Instructor – Tom Stringfellow. 2 day Class. Fee \$140.



tips and tricks

PAINLESS HAMMERING - April '11

Tired of hitting your fingers with your hammer when holding small projects down on the bench block? Grab a pencil and use the eraser to hold the item in place. It keeps your fingers out of the way and also keeps your project on the bench block.

CONSISTENT CUT WIRES - March '11

To cut many wires of the same length, such as for making earwires, cut a tube of brass or copper in that length. The diameter of the tube should be just slightly larger than the wire. Holding the tube with your index finger against one end to stop the wire, push the wire into the tube and cut at the edge of the tube. No more measuring and marking with ruler.

http://www.contenti.com/resources/tips/index.html?utm_source=Contenti+eNewsletter&utm_campaign=63ca7f6ca1-October_eNewsletter_3%2Bstars&utm_medium=email

Upcoming Show Dates

August

10-11—BATON ROUGE, LOUISIANA: Annual show; Baton Rouge Gem & Mineral Society; Baton Rouge Marriott; 5500 Hilton Ave.; Sat. 10-5, Sun. 10-5; adults \$4, students (12 and over) \$3, children (6-11) \$2, Scouts in uniform \$1, veterans free with military ID; demonstrations, cabbing, faceting, wire wrapping, door prizes, silent auctions; contact Diana Martin, (225) 931-7543; e-mail: Cajunladi@cox.net; Web site: Brgemandmineral.org

24-25—JASPER, TEXAS: 19th Annual Show; Pine Country Gem & Mineral Society; The Event Center; 6258 Hwy. 190W, five miles west of Jasper; Sat. 9-5, Sun. 10-5; adults \$3, free, students and children free; spinning wheel, silent auction, lapidary demonstrations, hourly door prizes, grand prize raffle, student prize, petrified wood field trip; contact Ann James, 2738 FM 92 S., Woodville, TX 75979, (409) 429-7444; e-mail: earthscache3@yahoo.com; Web site: www.pinecountrygms.org

September

14-15—GRAPEVINE, TEXAS: Annual show; Arlington Gem & Mineral Club; Grapevine Convention Center; 1209 S. Main St.; Sat. 10-6, Sun. 10-5; adults \$8; silent auctions, gem identification, demonstrations, door prizes, grand prize, Kids' Korner, displays, class information, 27th annual Grapevine Grapefest nearby; contact Randall Lantz, 1408 Gibbins Rd., Arlington, TX 76011; e-mail: show@agemclub.org; Web site: www.agemclub.org/events.php

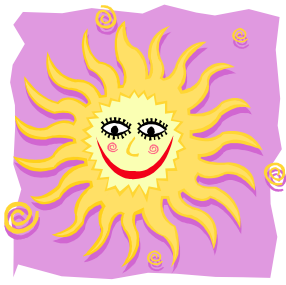
October

11-13—MOUNT IDA, ARKANSAS: 29th Annual Quartz, Quiltz and Craftz Show; Mount Ida Area Chamber of Commerce; Montgomery County Fairgrounds; Fairgrounds Rd.; Fri. 9-5, Sat. 9-5, Sun. 10-4; free admission; dealers, quartz crystals, minerals, jewelry, quilts, crafts, Treasure Hunt; contact Mount Ida Area Chamber of Commerce, Hwy. 270 W., Mount Ida, AR 71957, (870) 867-2723; e-mail: director@mtidachamber.com; Web site: www.mtidachamber.com

18-20—AUSTIN, TEXAS: Annual show; Austin Gem & Mineral Society; Palmer Events Center; 900 Barton Springs Rd.; Fri. 9-6, Sat. 9-6, Sun. 10-5; adults \$5, seniors \$4, students (13-18) \$1, children (12 and under) 50 cents; Wheel of Fortune, gem mine, fluorescent cave, touch table, educational exhibits, demonstrations; contact Susan Postlethwait, 6719 Burnet Ln., Austin, TX 78757; Web site: www.austingemandmineral.org

Welcome New Members

Don Gednetz
Kathy Haney
John McDonald Jr



Field Trips for 2013

Anyone planning to attend a field trip must notify field trip coordinator if you will be attending.

If you are unable to attend a field trip but would like something brought back just ask. Arrangements can be made.

June 8-9, 2013 – Branson Missouri to search for mozarkite and jasper

July 13, 2013 – North Sulfer River, Paris, Tx to search for fossils

August 24, 2013 – Jasper Gem & Mineral Society show

September, 2013 – Midlothian Texas. Updates to follow

October 5, 2013 – Arlington Gem & Mineral Society show

Nov 3-4, 2013 – Midland Gem & Mineral Society show

This field trip list is subject to change based on participation and input from members.

Pics from Ft Worth Show

Raw Material Made into Cabs



Pics from Larry's trip to IDAHO



Base Camp



Cooking at Camp



**Very Important Mining Guys
from Idaho**



Spiderwoman



Angel Wing Agate in the Rough



Larry Digging



Larry attempting to work the excavator



A beautiful piece of Linda Marie

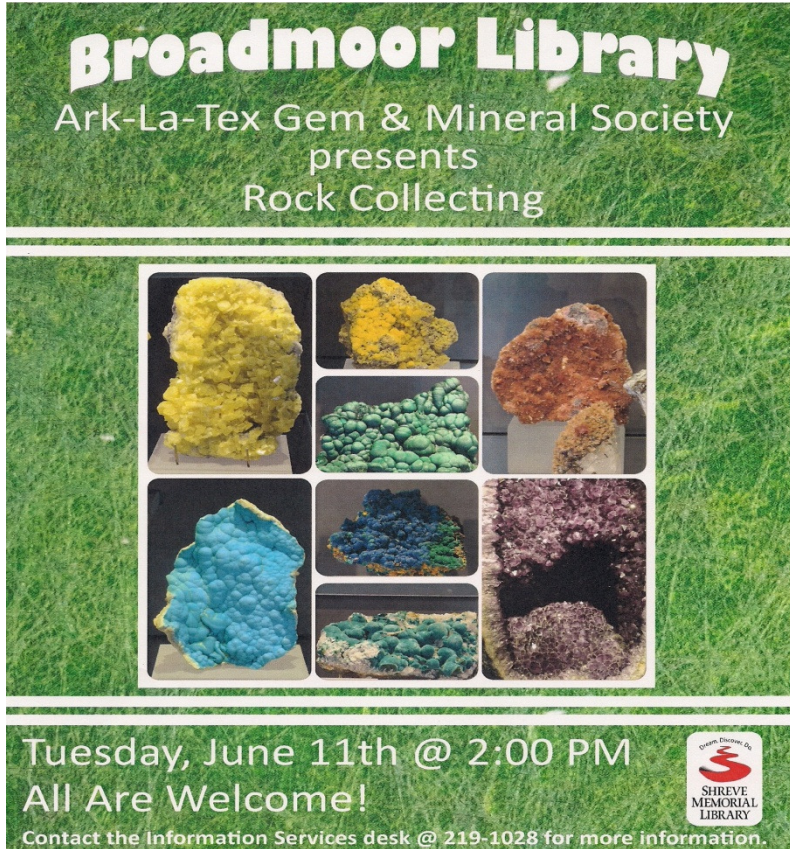


Pink Plume

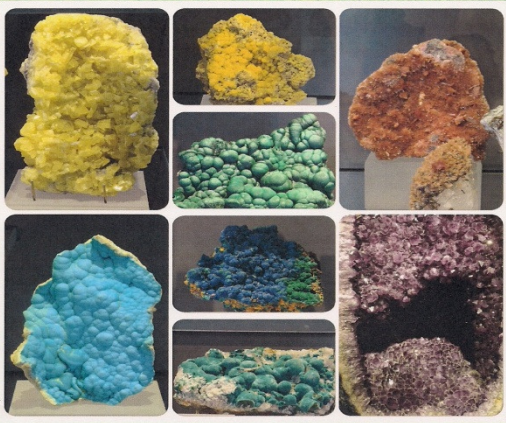
Learning about Rocks

In collaboration with Shreveport Library


Del will be presenting "Rock Collecting" at the Broadmoor Library on June 11, 2013



Broadmoor Library
Ark-La-Tex Gem & Mineral Society
presents
Rock Collecting



Tuesday, June 11th @ 2:00 PM
All Are Welcome!
Contact the Information Services desk @ 219-1028 for more information.



OFFICERS

President

Del Glasner

Home (318) 965-1989

Cell (318) 517-7372

Dglasner2001@yahoo.com

Vice President

Larry Maguire

Cell (318) 284-3544

Wood@centurytel.net

Secretary/Editor

Sharron Thomas

Cell (318) 423 2130

adslthomas@gmail.com

Treasurer

John Autry

(318) 210-9416

John.autry451@gmail.com

Tom Stringfellow

Board Member

(903) 839-6744

tomstring@aol.com

Antony Thomas

Board Member

Field Trip Coordinator

(318) 518-0907

adslthomas@gmail.com

Lynn Simms

Board Member

(318) 865-2453

lynsimms@gmail.com

Will House

Historian

The Rock Rattler is a monthly publication of the Ark-La-Tex Gem and Mineral Society located in Bossier City/Shreveport, Louisiana. The society is affiliated with the American Federation of Mineralogical Societies (AFMS) and the South Central Federation of Mineralogical Societies (SCFMS). Permission is given to reproduce this document all or in part with the proper credit given. Articles with no byline are by the editor.

The Ark-La-Tex Gem and Mineral Society is a nonprofit educational organization devoted to promoting interest in the various earth sciences, particularly the art of lapidaries and their related fields. Informational speeches presented at area schools and the presentation of awards and cash prizes at the Public School Earth Science Fair are two of the ways the society achieves its goals. Another contribution to the community is the annual show, held at the Bossier Civic Center, 620 Benton Rd, in Bossier City. This "Jewelry, Gem, & Mineral Show" functions as a fund raiser for our group and a venue for the demonstrations of gold and silver casting, jewelry making, bead stringing, faceting, cabochon making, and flint knapping (the art of flaking stone tools such as arrowheads). The monthly meetings included programs of interest to rock hounds, information from the Rock Rattler, and jewelry making classes complete the educational objectives of the club.

Arklatex Gem & Mineral Society
PO Box 6633
Bossier City, LA 71171-6633