

# THE ROCK RATTLER

PUBLISHED MONTHLY BY

THE ARK-LA-TEX GEM AND MINERAL SOCIETY

VOLUME: 48

NO. 10



*Tourmaline Birthstone of the month*

## Presidents Message - by Del Glasner

Our club is working with the Sci-Port to create a new exhibit with rocks and minerals

## Birthstone for September is Tourmaline (Traditional) or Opal (Modern)

Commonly encountered Tourmaline species and varieties:

*Brownish black to black*—schorl, It may account for 95% or more of all tourmaline in nature.

*Dark yellow to brownish black*—dravite,

*Red or pinkish-red*—rubellite variety,

*Light blue to bluish green*—Brazilian indicolite variety (from indigo),

*Green*—verdelite or Brazilian emerald variety,

*Colorless*—achroite variety

Bi-colored and multicolored crystals are common, reflecting variations of fluid chemistry during crystallization. Crystals may be green at one end and pink at the other, or green on the outside and pink inside; this type is called [watermelon](#) tourmaline. Some forms of tourmaline are [dichroic](#); they change color when viewed from different directions.

The pink color of tourmalines from many localities is the result of prolonged natural irradiation.

A handheld [neodymium magnet](#) can be used to identify or separate some types of tourmaline gems from others.

Some tourmaline gems, especially pink to red colored stones, are altered by [heat treatment](#) to improve their color. Overly dark red stones can be lightened by careful heat treatment. The pink color in manganese-containing near-colorless to pale pink stones can be greatly increased by irradiation with gamma-rays or electron beams. Irradiation is almost impossible to detect in tourmalines, and does not, currently, affect the value. Heavily included tourmalines, such as rubellite and Brazilian paraiba, are sometimes clarity-enhanced. A clarity-enhanced tourmaline (especially the paraiba variety) is worth much less than an untreated gem of equal clarity.

Tourmaline is found in [granite](#) and granite [pegmatites](#) and in [metamorphic](#) rocks such as [schist](#) and [marble](#). Schorl and lithium-rich tourmalines are usually found in granite and granite pegmatite. Magnesium-rich tourmalines, dravites, are generally restricted to schists and marble. Tourmaline is a durable mineral and can be found in minor amounts as grains in [sandstone](#) and [conglomerate](#).

During the early 1900s, Maine and California were the world's largest producers of gem tourmalines. The [Empress Dowager Cixi](#) of China loved pink tourmaline and bought large quantities for gemstones and carvings from the then new Himalaya Mine, located in San Diego County, California

**Next meeting :** Tuesday Oct 6 at the **New Location**

**Sci-Port Discovery Center**, 820 Clyde Fant Pkwy. Shreveport

Time: 6:00 pm- 8:00 pm

**Program:** Tourmalines  
**Demo:** Salt water etching

**Member Photos –**

**Chapman**



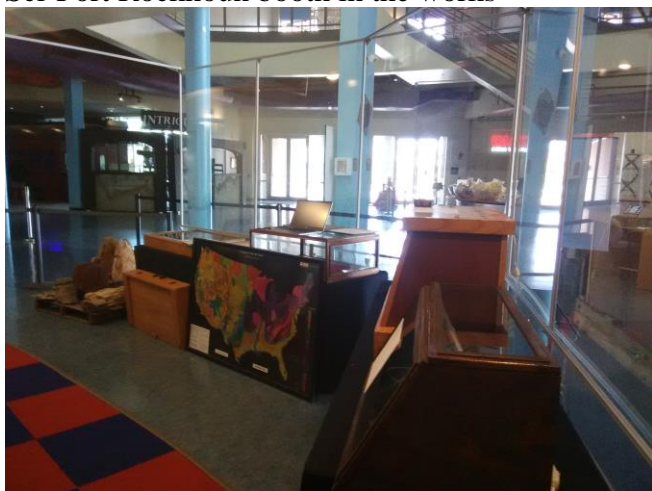
**Marze**



**New Members – the Clarks**



Sci-Port Rockhoun booth in the works



Glasner- Tiny Fossil Fish Ear Bone



Kat's Creations



**Classroom/Shop:** Open for members most Saturdays 10-5  
Check our facebook page link below to confirm it is open.  
Location: 581 Rex Beard Rd. Haughton, La

### **Tips & Tricks :**

Translucent stones mounted with a silver backing sometimes tarnish and reduce the appearance. Try gluing aluminum foil to the back with 3 sec glue or epoxy before mounting it will stay nice and shiny.

### **Websites that may be of Interest:**

#### **Sci-Port**

<https://sci-port.org/>

#### **Smithsonian Tourmaline**

<https://www.si.edu/newsdesk/photos/tourmaline-triplets>

### **Officers**

President – Del Glasner- email [dglasner2001@yahoo.com](mailto:dglasner2001@yahoo.com) 318-517-7372

Vice President- Kat Clover [sophistikatsdesigns@yahoo.com](mailto:sophistikatsdesigns@yahoo.com) 502-298-0123

Secretary – Kathy Haney [moonoverrainier@hotmail.com](mailto:moonoverrainier@hotmail.com) 318-820-7025

Treasurer – John Autry [john.autry451@gmail.com](mailto:john.autry451@gmail.com) 318-639-1874

Board Member – Tom Stringfellow [TomString@aol.com](mailto:TomString@aol.com) 903-839-6744

Board Member – Laura McWilliams [laura.mcwilliams@outlook.com](mailto:laura.mcwilliams@outlook.com) 318-464-4446

Board Member – Jeanette Jonas [jrocks42@gmail.com](mailto:jrocks42@gmail.com) 619-962-8035

Others

Webmaster -- Kat Clover [sophistikatsdesigns@yahoo.com](mailto:sophistikatsdesigns@yahoo.com) 502-298-0123

Newsletter Editor – Del Glasner [dglasner2001@yahoo.com](mailto:dglasner2001@yahoo.com) 318-517-7372

Shop Steward chairman – Laura McWilliams [laura.mcwilliams@outlook.com](mailto:laura.mcwilliams@outlook.com) 318-464-4446

#### **Send in photos of your craftwork or comments**

via email- [larockclub@gmail.com](mailto:larockclub@gmail.com)

Facebook – <https://www.facebook.com/ArkLaTexGemMineralSociety/>

Website - <http://larockclub.com/>