



TOWER 2

A WONDER ON THE WATERWAY





ANNOUNCING W RESIDENCES DUBAI HABOUR TOWER 2

Experience upscale urban living in a waterfront community with breathtaking views of the Dubai Marina, Palm Jumeirah and Bluewaters Island.

Choose from over 400 impeccably appointed homes spread across an immaculately designed three-tower complex with high-end dining, shopping and hospitality experiences.

Enjoy an exceptional lifestyle with a wide range of carefully curated amenities in the beating heart of the region's largest recreational marina.





AN ELEVATED STYLE OF MARINA LUXURY



LOCATION



Experience unparalleled luxury at W Residences, nestled in Dubai Harbour's stunning waterfront community.

Admire panoramic views of the iconic Palm Jumeirah, Dubai Marina, Bluewaters Island, and the endless calm

waters of the Arabian Gulf. For consummate pleasure-seekers, Dubai Harbour presents every opportunity for an active lifestyle augmented by luxurious living amenities and access to high-end dining, shopping and holiday-making experiences.



TAKE IN THOSE COOL OCEAN VIBES







THE BUILDING

With LEED Silver-certified design that is inspired by the majesty of its surroundings, W Residences at Dubai Harbour provides a creative, stimulating environment for both residents and visitors alike.

Designed to connect three horizontal lines – the promenade, the harbour and the sky – that reflect the unique seafront and urban landscape, the three-tower complex also features striking diagonal lines that allow the buildings to ‘touch’ at points where water and sky meet.

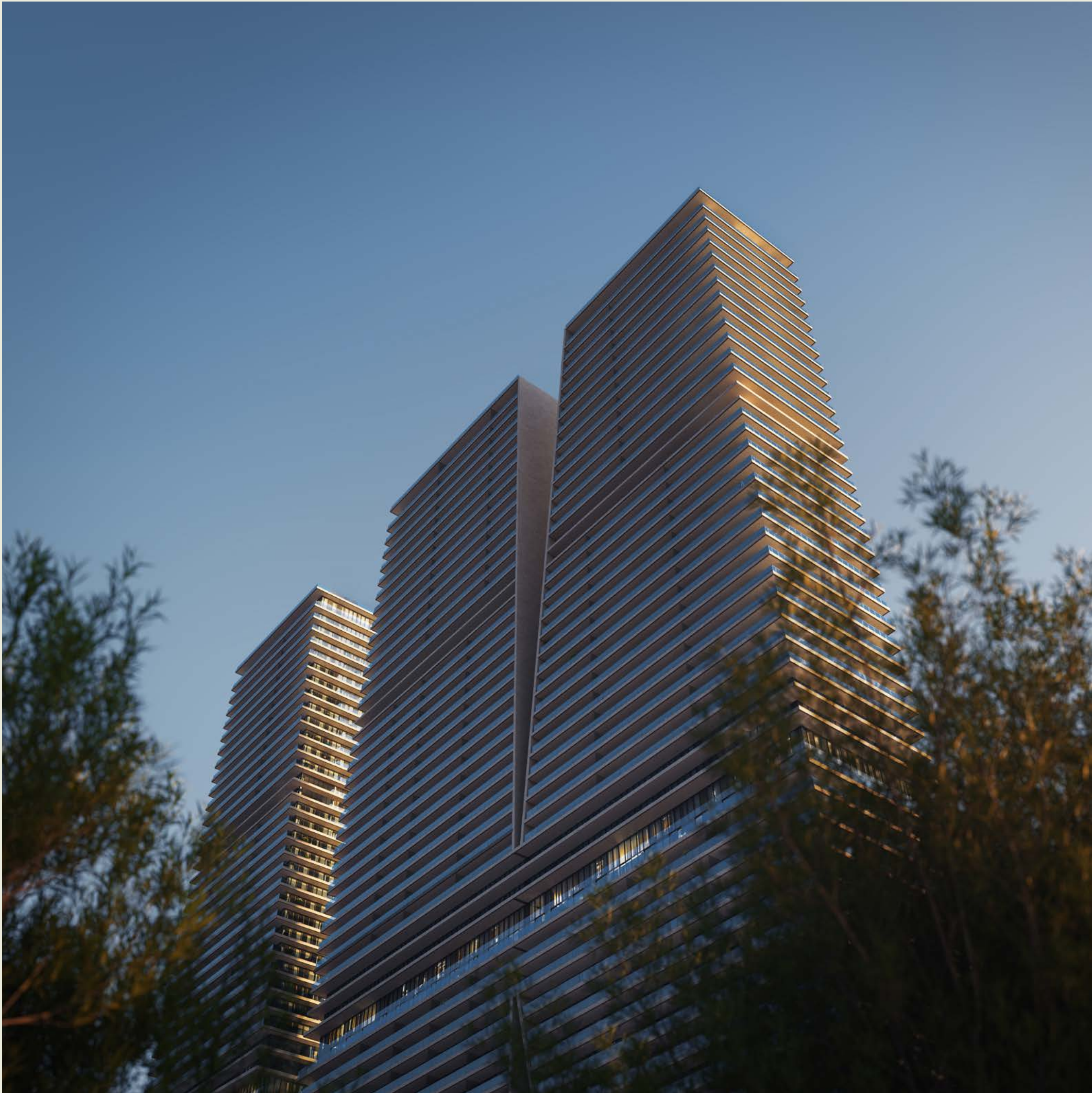
This awe-inspiring backdrop is complemented by the shared experiences that form part of the complex in the form of the world-beating amenities and services that are layered into the podium level.



A LIFE ENHANCED BY STYLE







THE RESIDENCES

The wide range of floor plan options in W Residences - Tower 2 allows owners to buy a suitable layout for their needs.

From well-appointed single-bedroom apartments to luxurious five-bedroom rooftop penthouses that feature pools with incomparable views, W Residences at Dubai Harbour also contains a range of three- and four-bedroom duplex apartments in the tower's central section.

Rest assured; an exceptional living experience awaits the owner of any unit in the building with smart home features as standard and immaculate finishes that complement a warm, simple interior design.

Each home also contains several kitchen components – including a washer-dryer, cooking range and hood – provided free of charge.

WHERE SEA AND SUN SHINE



SPACES FOR GATHERINGS

The Residence Lounge is a platform for engaging and creative gatherings. A practical and inspiring co-working space by day, the Lounge transforms into a stylish social venue by night. Over 170 square meters in size, this area contains flexible and immersive, tech-enabled spaces that can be customized to fit entertainment or corporate needs.



YOGA AND PILATES STUDIOS

Residents enjoy exclusive access to premium wellness facilities in the shape of purpose-built studios dedicated to yoga and pilates. These facilities enjoy exceptional views of the surrounding cityscape while providing the perfect location to indulge in meditation and exercise.





WELLNESS SPA

The Residences also includes a spectacular wellness spa and fitness centre, designed exclusively for residents and located on the podium level. Featuring high-end services and premium relaxation and recovery amenities, this facility is dedicated to enhancing residents' wellbeing.





SCREENING ROOM

Residents can enjoy their own cinema. An exclusive big screen and high-end sound system are available for owners and their guests to book.



WELLFIT

Located on the podium level, Wellfit's flagship 43,000-square-foot wellness center is the largest in the entire Dubai Marina area. It offers a variety of workout areas and studios and state-of-the-art fitness equipment.



FOOD AND BEVERAGE

The top-tier restaurant and refreshment facilities at W Residences at Dubai Harbour make your lifestyle destination one of the most popular parts of the up-and-coming harbour district.

Owners can also enjoy a host of carefully curated food and beverage outlets along the ground floor level, incorporating fine dining culture at its best.



SPECTACULAR INFINITY POOL

At over 200 meters long, the WET Infinity Pool on the podium level is one of the longest in the city, complemented by a spacious pool deck and barbecue area.

GAMES ROOM



Located on the podium level, a Games Room offers a full range of classic indoor activities, from pool tables and table tennis to a Sports Simulator room featuring specialized software and a big screen for residents to play a huge variety of e-sports.

SOUND SUITE

A private music recording studio, the Sound Suite includes a lounge, live room and main mixing room incorporating the latest high-tech equipment.

A new way for bands, DJs and musicians to get creative, this space allows artists the freedom to collaborate in an awe-inspiring location.



KIDDY CLUB



Expertly trained staff organize a wide range of creative and fun programs in the spacious kids' club at W Residences at Dubai Harbour. Children can look forward to fulfilling and entertaining ways to spend their time. With colourful interiors as the backdrop of ever-changing activities on offer, the space allows parents to rest easy knowing their children are in safe hands.



AMENITIES

- Panoramic views of Dubai Harbour, Bluewaters Island, The Palm Jumeirah and Dubai Marina from every apartment
- Smart home features as standard in each residence
- Residents-only 200m the WET Infinity Pool on the podium level
- Whatever/Whenever© 24-hour concierge service and valet parking
- Electric vehicle charging, efficient water and energy usage and responsible waste management practices
- Access to 170sqm Residence Lounge
- Screening Room, Sound Suite and Games Room
- Meeting and co-working spaces and guest suites for visiting friends or relatives
- Residents-only FITgym, wellness spa, yoga and pilates studio and kids club
- Residents can also enjoy the 43,000 sqft Wellfit fitness centre
- Easy access to fine dining restaurants at ground floor level
- Easy access to the largest marina in the Gulf
- Easy access to Dubai Harbour Yacht Club



SLIP INTO
COMFORT







WHATEVER/ WHENEVER©

Residence owners have an unparalleled range of services, alongside the world-class amenities on offer. These include the signature Whatever/Whenever© 24-hour concierge service, valet parking, high-

speed internet access and much more. Living at W Residences at Dubai Harbour means being part of an exclusive group of creative fellow residents, with a wide range of social and networking facilities allowing for easy connections.

BENEFITS WITH ONVIA An Exclusive Platform for Residence Owners

The Residences offer a lifestyle experience that goes well beyond what you've ever imagined. Rooted in the fine art of hospitality, ONVIA provides a unique point of view on residential living, amenities, experiences, and more – each one designed to take you beyond your imagination.

- Elevated Marriott Bonvoy loyalty status for Residence Owners
- Preferred Residence Owner rates for select hotels within the global Marriott Bonvoy portfolio
- Special offerings and preferred access on voyages with The Ritz-Carlton Yacht Collection
- Exclusive offers on culinary experiences when at home and within the local community
- A focus on wellness, including spa and treatment offerings
- Access to a world-class accredited concierge service

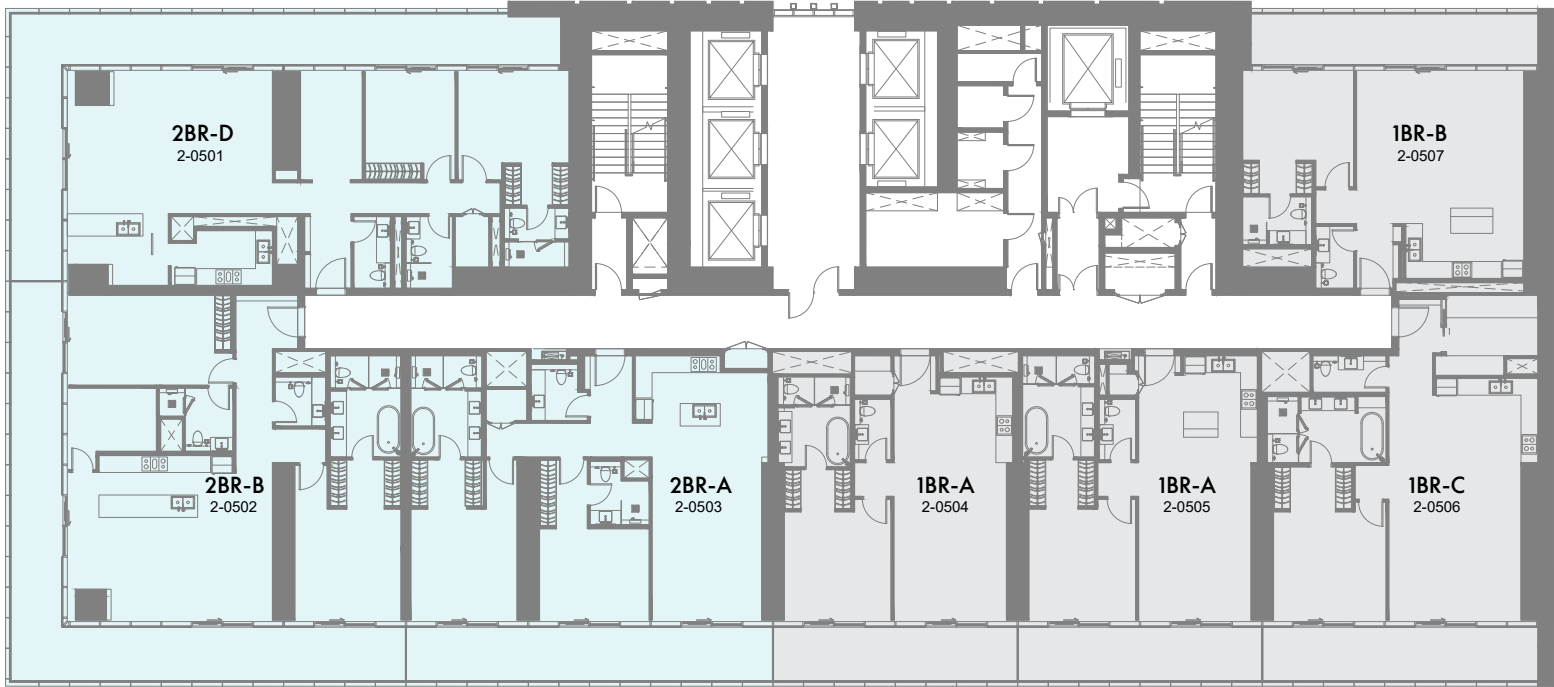


FLOOR PLANS



1st to 4th Floor Plan

5th Floor Plan



1 Bedroom 2 Bedrooms 2 Bedrooms Duplex 3 Bedrooms 3 Bedrooms Duplex 4 Bedrooms 5 Bedrooms Penthouse 5 Bedrooms Presidential suite

1 Bedroom 2 Bedrooms 2 Bedrooms Duplex 3 Bedrooms 3 Bedrooms Duplex 4 Bedrooms 5 Bedrooms Penthouse 5 Bedrooms Presidential suite

1-Measurements are indicative 'finish to finish' in Metric & Imperial excluding construction tolerance. 2-Plot/unit dimensions may vary from brochure, and unit types/plans may exist as mirrored versions; 3-All images used are for illustrative purposes only. 4-Unless stated otherwise, all fittings and interior decorative items shown are for illustrative purposes only. 5-The developer reserves the right to make alterations, at its absolute discretion, without any liability whatsoever up to the final 'as built' status.

1-Measurements are indicative 'finish to finish' in Metric & Imperial excluding construction tolerance. 2-Plot/unit dimensions may vary from brochure, and unit types/plans may exist as mirrored versions; 3-All images used are for illustrative purposes only. 4-Unless stated otherwise, all fittings and interior decorative items shown are for illustrative purposes only. 5-The developer reserves the right to make alterations, at its absolute discretion, without any liability whatsoever up to the final 'as built' status.

6th to 9th Floor Plan



1 Bedroom 2 Bedrooms 2 Bedrooms Duplex 3 Bedrooms 3 Bedrooms Duplex 4 Bedrooms 5 Bedrooms Penthouse 5 Bedrooms Presidential suite

1-Measurements are indicative 'finish to finish' in Metric & Imperial excluding construction tolerance. 2-Plot/unit dimensions may vary from brochure, and unit types/plans may exist as mirrored versions; 3-All images used are for illustrative purposes only. 4-Unless stated otherwise, all fittings and interior decorative items shown are for illustrative purposes only. 5-The developer reserves the right to make alterations, at its absolute discretion, without any liability whatsoever up to the final 'as built' status.

10th Floor Plan

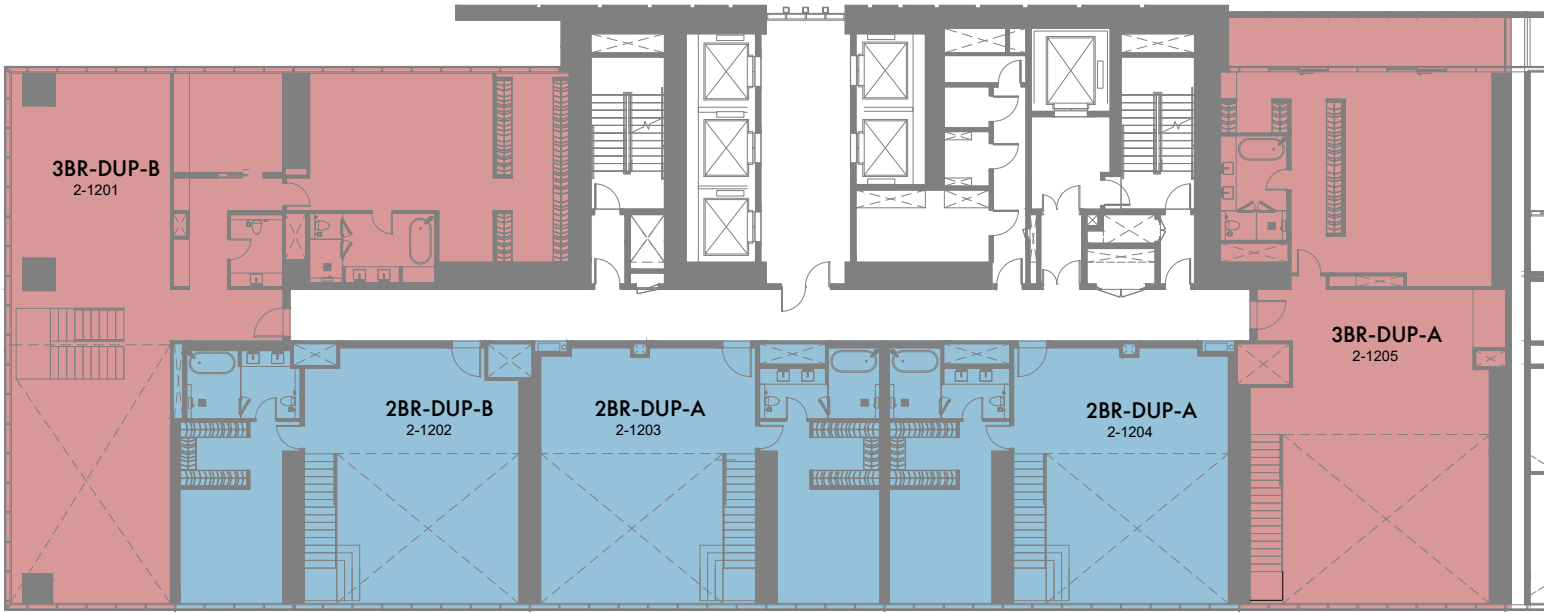
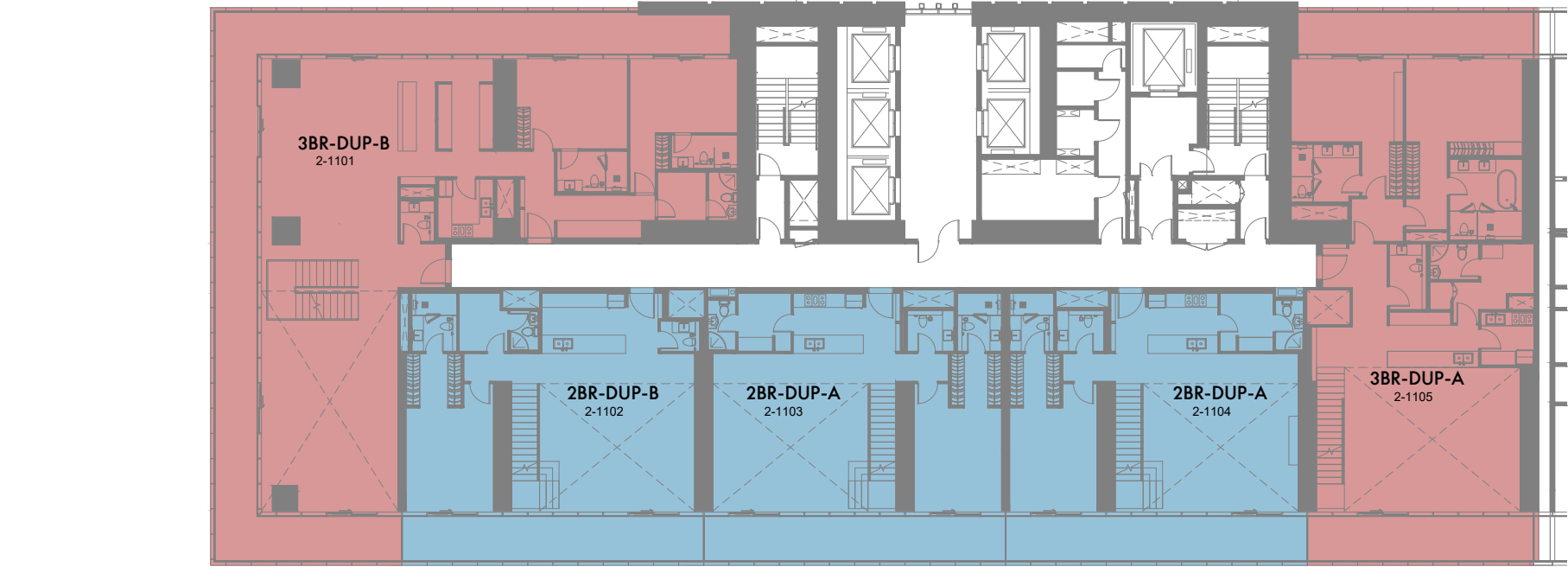


1 Bedroom 2 Bedrooms 2 Bedrooms Duplex 3 Bedrooms 3 Bedrooms Duplex 4 Bedrooms 5 Bedrooms Penthouse 5 Bedrooms Presidential suite

1-Measurements are indicative 'finish to finish' in Metric & Imperial excluding construction tolerance. 2-Plot/unit dimensions may vary from brochure, and unit types/plans may exist as mirrored versions; 3-All images used are for illustrative purposes only. 4-Unless stated otherwise, all fittings and interior decorative items shown are for illustrative purposes only. 5-The developer reserves the right to make alterations, at its absolute discretion, without any liability whatsoever up to the final 'as built' status.

11th Floor Plan

12th Floor Plan



1 Bedroom 2 Bedrooms 2 Bedrooms Duplex 3 Bedrooms 3 Bedrooms Duplex 4 Bedrooms 5 Bedrooms Penthouse 5 Bedrooms Presidential suite

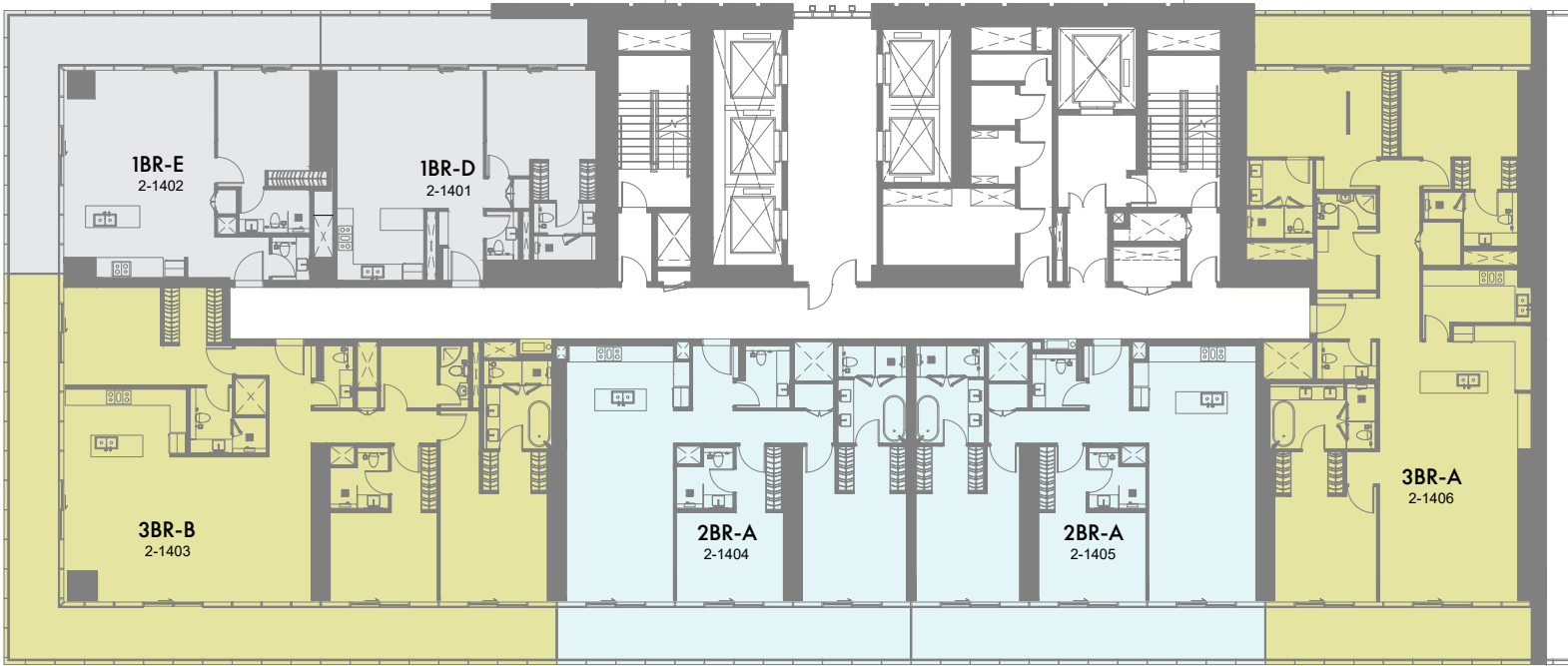
1-Measurements are indicative 'finish to finish' in Metric & Imperial excluding construction tolerance. 2-Plot/unit dimensions may vary from brochure, and unit types/plans may exist as mirrored versions; 3-All images used are for illustrative purposes only. 4-Unless stated otherwise, all fittings and interior decorative items shown are for illustrative purposes only. 5-The developer reserves the right to make alterations, at its absolute discretion, without any liability whatsoever up to the final 'as built' status.



1 Bedroom 2 Bedrooms 2 Bedrooms Duplex 3 Bedrooms 3 Bedrooms Duplex 4 Bedrooms 5 Bedrooms Penthouse 5 Bedrooms Presidential suite

1-Measurements are indicative 'finish to finish' in Metric & Imperial excluding construction tolerance. 2-Plot/unit dimensions may vary from brochure, and unit types/plans may exist as mirrored versions; 3-All images used are for illustrative purposes only. 4-Unless stated otherwise, all fittings and interior decorative items shown are for illustrative purposes only. 5-The developer reserves the right to make alterations, at its absolute discretion, without any liability whatsoever up to the final 'as built' status.

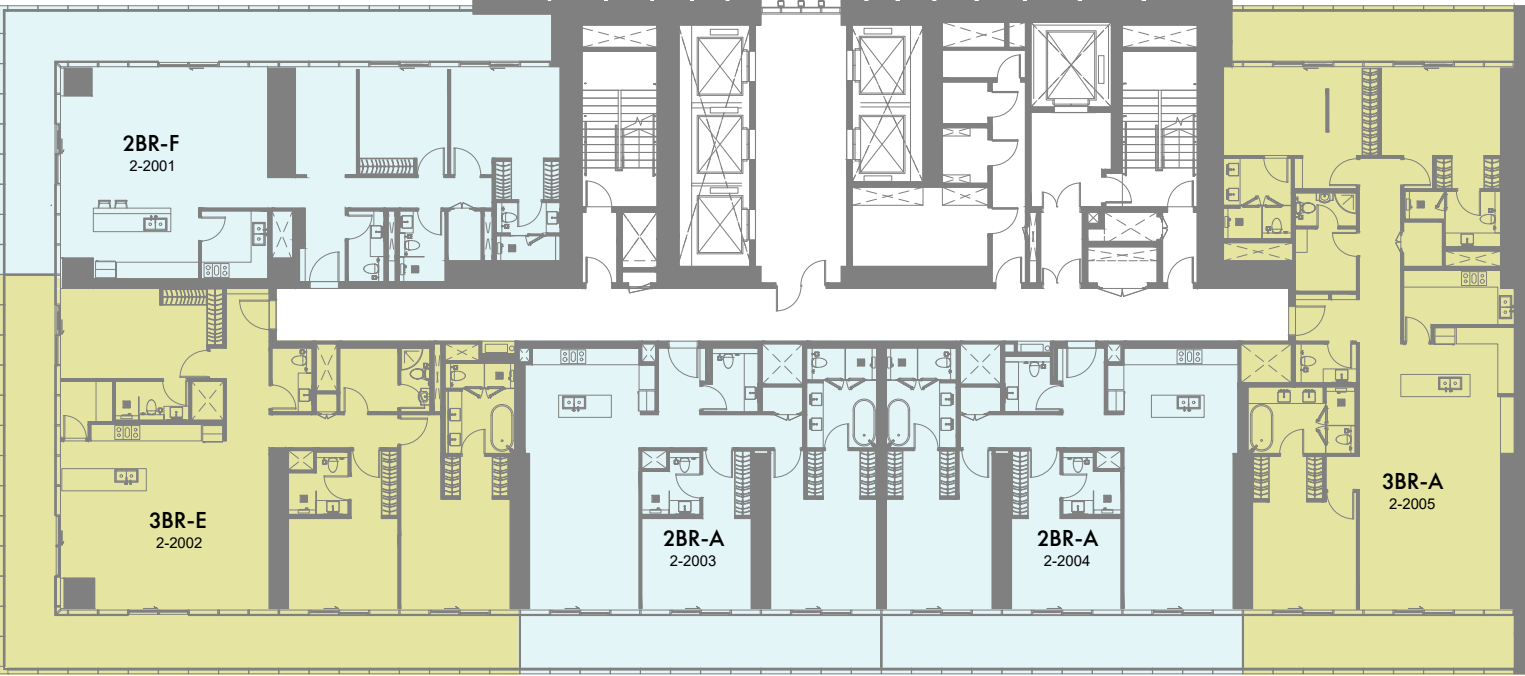
14th to 19th Floor Plan



1 Bedroom 2 Bedrooms 2 Bedrooms Duplex 3 Bedrooms 3 Bedrooms Duplex 4 Bedrooms 5 Bedrooms Penthouse 5 Bedrooms Presidential suite

1-Measurements are indicative 'finish to finish' in Metric & Imperial excluding construction tolerance. 2-Plot/unit dimensions may vary from brochure, and unit types/plans may exist as mirrored versions; 3-All images used are for illustrative purposes only. 4-Unless stated otherwise, all fittings and interior decorative items shown are for illustrative purposes only. 5-The developer reserves the right to make alterations, at its absolute discretion, without any liability whatsoever up to the final 'as built' status.

20th and 21th Floor Plan

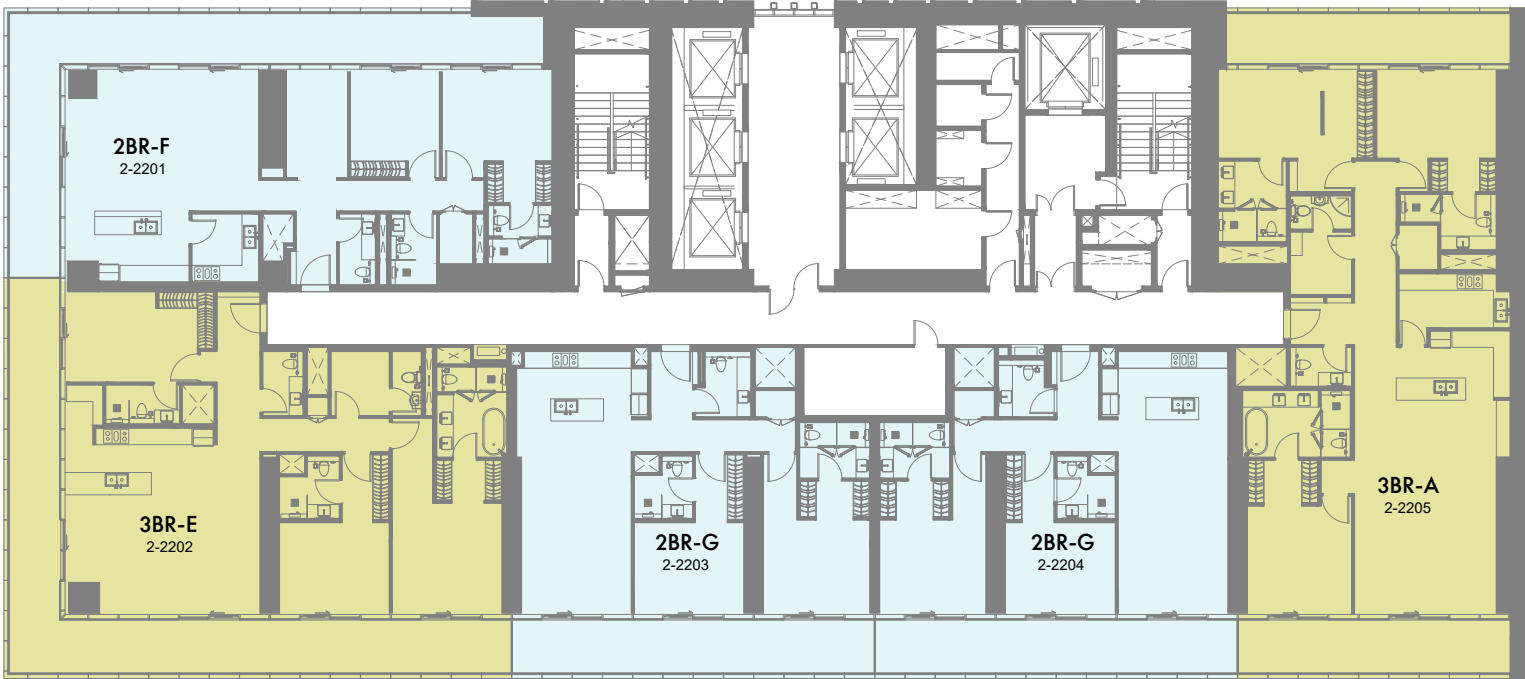


1 Bedroom 2 Bedrooms 2 Bedrooms Duplex 3 Bedrooms 3 Bedrooms Duplex 4 Bedrooms 5 Bedrooms Penthouse 5 Bedrooms Presidential suite

1-Measurements are indicative 'finish to finish' in Metric & Imperial excluding construction tolerance. 2-Plot/unit dimensions may vary from brochure, and unit types/plans may exist as mirrored versions; 3-All images used are for illustrative purposes only. 4-Unless stated otherwise, all fittings and interior decorative items shown are for illustrative purposes only. 5-The developer reserves the right to make alterations, at its absolute discretion, without any liability whatsoever up to the final 'as built' status.

22th Floor Plan

23th to 27th Floor Plan



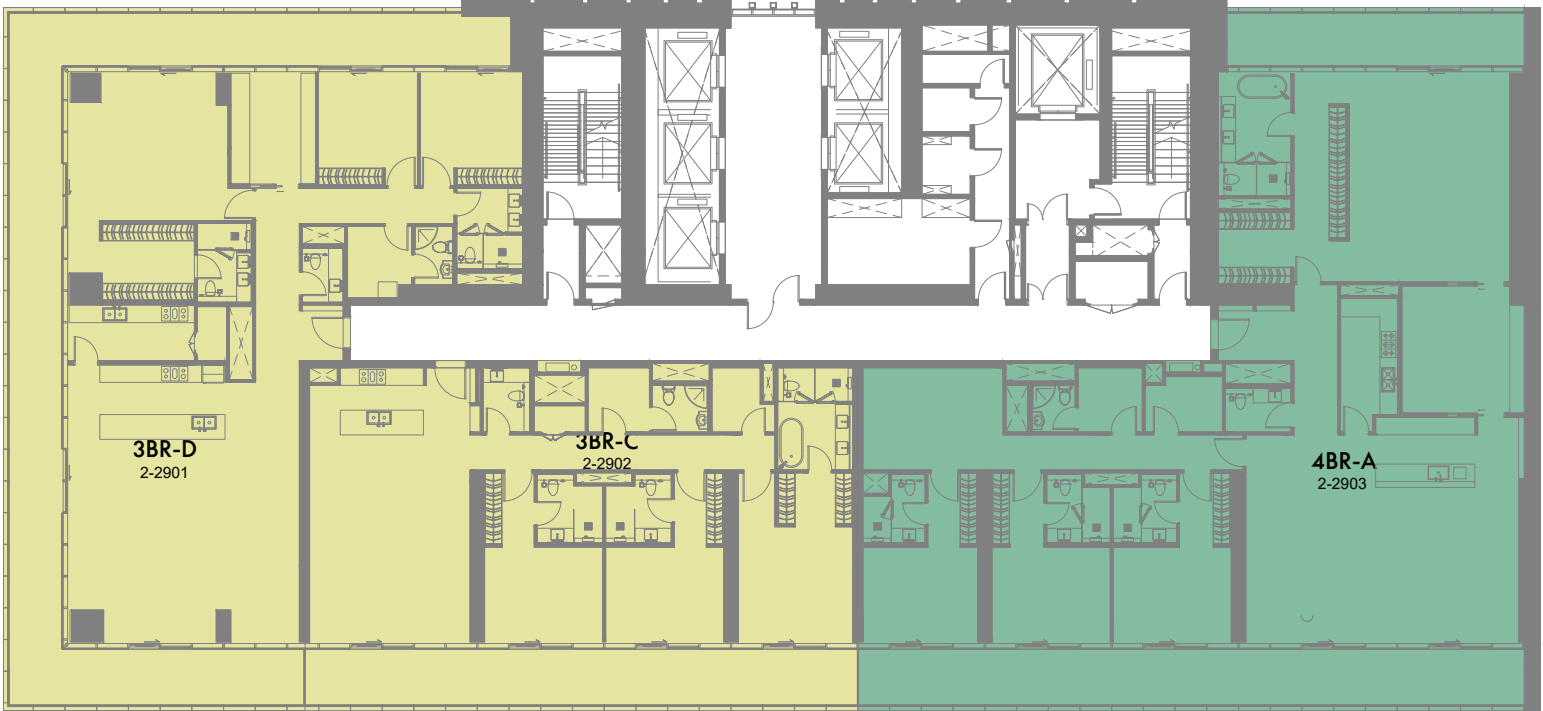
1 Bedroom 2 Bedrooms 2 Bedrooms Duplex 3 Bedrooms 3 Bedrooms Duplex 4 Bedrooms 5 Bedrooms Penthouse 5 Bedrooms Presidential suite

1 Bedroom 2 Bedrooms 2 Bedrooms Duplex 3 Bedrooms 3 Bedrooms Duplex 4 Bedrooms 5 Bedrooms Penthouse 5 Bedrooms Presidential suite

1-Measurements are indicative 'finish to finish' in Metric & Imperial excluding construction tolerance. 2-Plot/unit dimensions may vary from brochure, and unit types/plans may exist as mirrored versions; 3-All images used are for illustrative purposes only. 4-Unless stated otherwise, all fittings and interior decorative items shown are for illustrative purposes only. 5-The developer reserves the right to make alterations, at its absolute discretion, without any liability whatsoever up to the final 'as built' status.

1-Measurements are indicative 'finish to finish' in Metric & Imperial excluding construction tolerance. 2-Plot/unit dimensions may vary from brochure, and unit types/plans may exist as mirrored versions; 3-All images used are for illustrative purposes only. 4-Unless stated otherwise, all fittings and interior decorative items shown are for illustrative purposes only. 5-The developer reserves the right to make alterations, at its absolute discretion, without any liability whatsoever up to the final 'as built' status.

29th to 31st Floor Plan



1 Bedroom 2 Bedrooms 2 Bedrooms Duplex 3 Bedrooms 3 Bedrooms Duplex 4 Bedrooms 5 Bedrooms Penthouse 5 Bedrooms Presidential suite

1-Measurements are indicative 'finish to finish' in Metric & Imperial excluding construction tolerance. 2-Plot/unit dimensions may vary from brochure, and unit types/plans may exist as mirrored versions; 3-All images used are for illustrative purposes only. 4-Unless stated otherwise, all fittings and interior decorative items shown are for illustrative purposes only. 5-The developer reserves the right to make alterations, at its absolute discretion, without any liability whatsoever up to the final 'as built' status.

32nd Floor Plan



1 Bedroom 2 Bedrooms 2 Bedrooms Duplex 3 Bedrooms 3 Bedrooms Duplex 4 Bedrooms 5 Bedrooms Penthouse 5 Bedrooms Presidential suite

1-Measurements are indicative 'finish to finish' in Metric & Imperial excluding construction tolerance. 2-Plot/unit dimensions may vary from brochure, and unit types/plans may exist as mirrored versions; 3-All images used are for illustrative purposes only. 4-Unless stated otherwise, all fittings and interior decorative items shown are for illustrative purposes only. 5-The developer reserves the right to make alterations, at its absolute discretion, without any liability whatsoever up to the final 'as built' status.

33rd Floor Plan



1 Bedroom 2 Bedrooms 2 Bedrooms Duplex 3 Bedrooms 3 Bedrooms Duplex 4 Bedrooms 5 Bedrooms Penthouse 5 Bedrooms Presidential suite

1-Measurements are indicative 'finish to finish' in Metric & Imperial excluding construction tolerance. 2-Plot/unit dimensions may vary from brochure, and unit types/plans may exist as mirrored versions; 3-All images used are for illustrative purposes only. 4-Unless stated otherwise, all fittings and interior decorative items shown are for illustrative purposes only. 5-The developer reserves the right to make alterations, at its absolute discretion, without any liability whatsoever up to the final 'as built' status.

34th to 38th Floor Plan

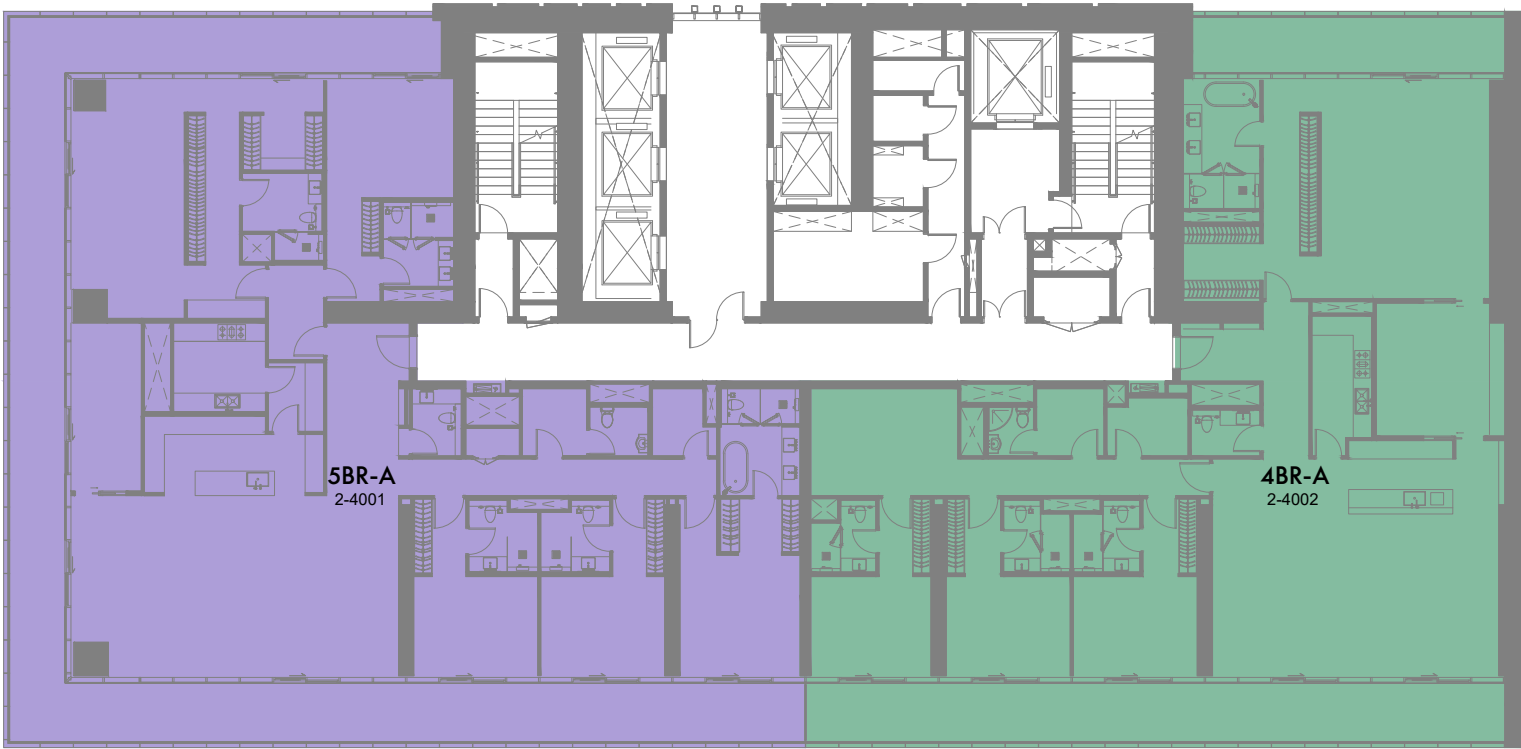
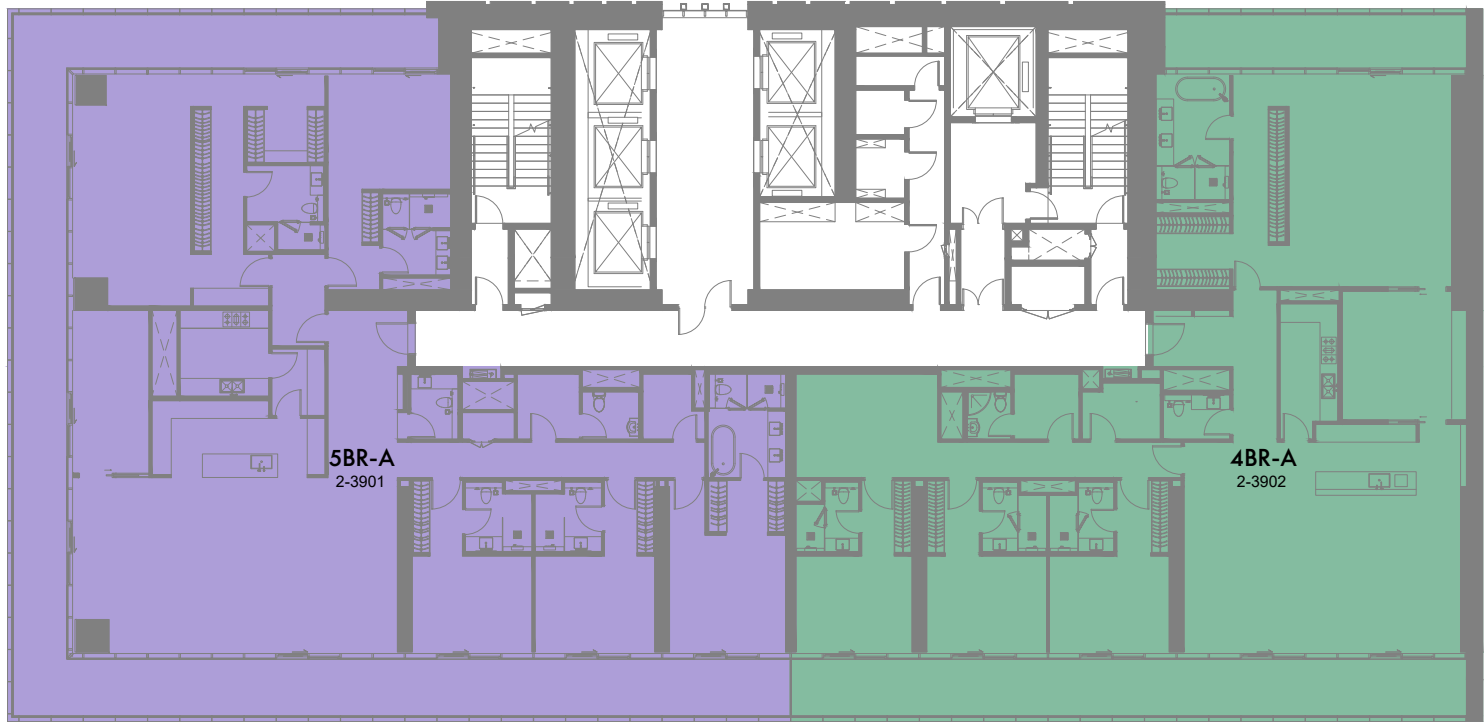


1 Bedroom 2 Bedrooms 2 Bedrooms Duplex 3 Bedrooms 3 Bedrooms Duplex 4 Bedrooms 5 Bedrooms Penthouse 5 Bedrooms Presidential suite

1-Measurements are indicative 'finish to finish' in Metric & Imperial excluding construction tolerance. 2-Plot/unit dimensions may vary from brochure, and unit types/plans may exist as mirrored versions; 3-All images used are for illustrative purposes only. 4-Unless stated otherwise, all fittings and interior decorative items shown are for illustrative purposes only. 5-The developer reserves the right to make alterations, at its absolute discretion, without any liability whatsoever up to the final 'as built' status.

39th Floor Plan

40th Floor Plan



1 Bedroom 2 Bedrooms 2 Bedrooms Duplex 3 Bedrooms 3 Bedrooms Duplex 4 Bedrooms 5 Bedrooms Penthouse 5 Bedrooms Presidential suite

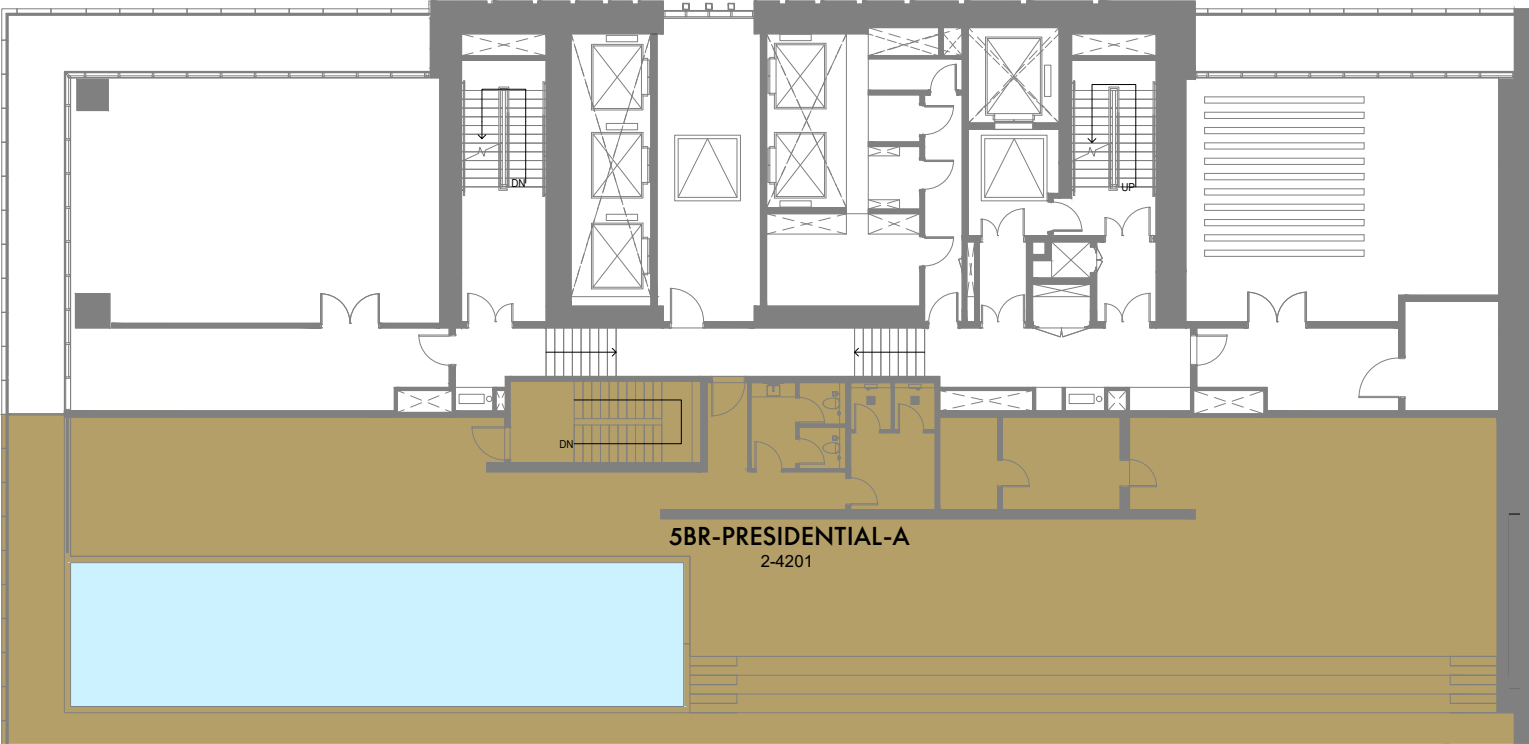
1 Bedroom 2 Bedrooms 2 Bedrooms Duplex 3 Bedrooms 3 Bedrooms Duplex 4 Bedrooms 5 Bedrooms Penthouse 5 Bedrooms Presidential suite

1-Measurements are indicative 'finish to finish' in Metric & Imperial excluding construction tolerance. 2-Plot/unit dimensions may vary from brochure, and unit types/plans may exist as mirrored versions; 3-All images used are for illustrative purposes only. 4-Unless stated otherwise, all fittings and interior decorative items shown are for illustrative purposes only. 5-The developer reserves the right to make alterations, at its absolute discretion, without any liability whatsoever up to the final 'as built' status.

1-Measurements are indicative 'finish to finish' in Metric & Imperial excluding construction tolerance. 2-Plot/unit dimensions may vary from brochure, and unit types/plans may exist as mirrored versions; 3-All images used are for illustrative purposes only. 4-Unless stated otherwise, all fittings and interior decorative items shown are for illustrative purposes only. 5-The developer reserves the right to make alterations, at its absolute discretion, without any liability whatsoever up to the final 'as built' status.

41st Presidential Suite Floor Plan

Presidential Suite Roof Top Floor Plan



1 Bedroom 2 Bedrooms 2 Bedrooms Duplex 3 Bedrooms 3 Bedrooms Duplex 4 Bedrooms 5 Bedrooms Penthouse 5 Bedrooms Presidential suite

1-Measurements are indicative 'finish to finish' in Metric & Imperial excluding construction tolerance. 2-Plot/unit dimensions may vary from brochure, and unit types/plans may exist as mirrored versions; 3-All images used are for illustrative purposes only. 4-Unless stated otherwise, all fittings and interior decorative items shown are for illustrative purposes only. 5-The developer reserves the right to make alterations, at its absolute discretion, without any liability whatsoever up to the final 'as built' status.

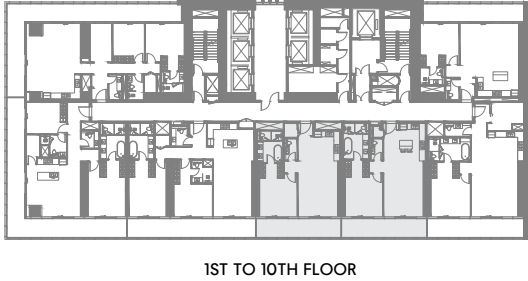
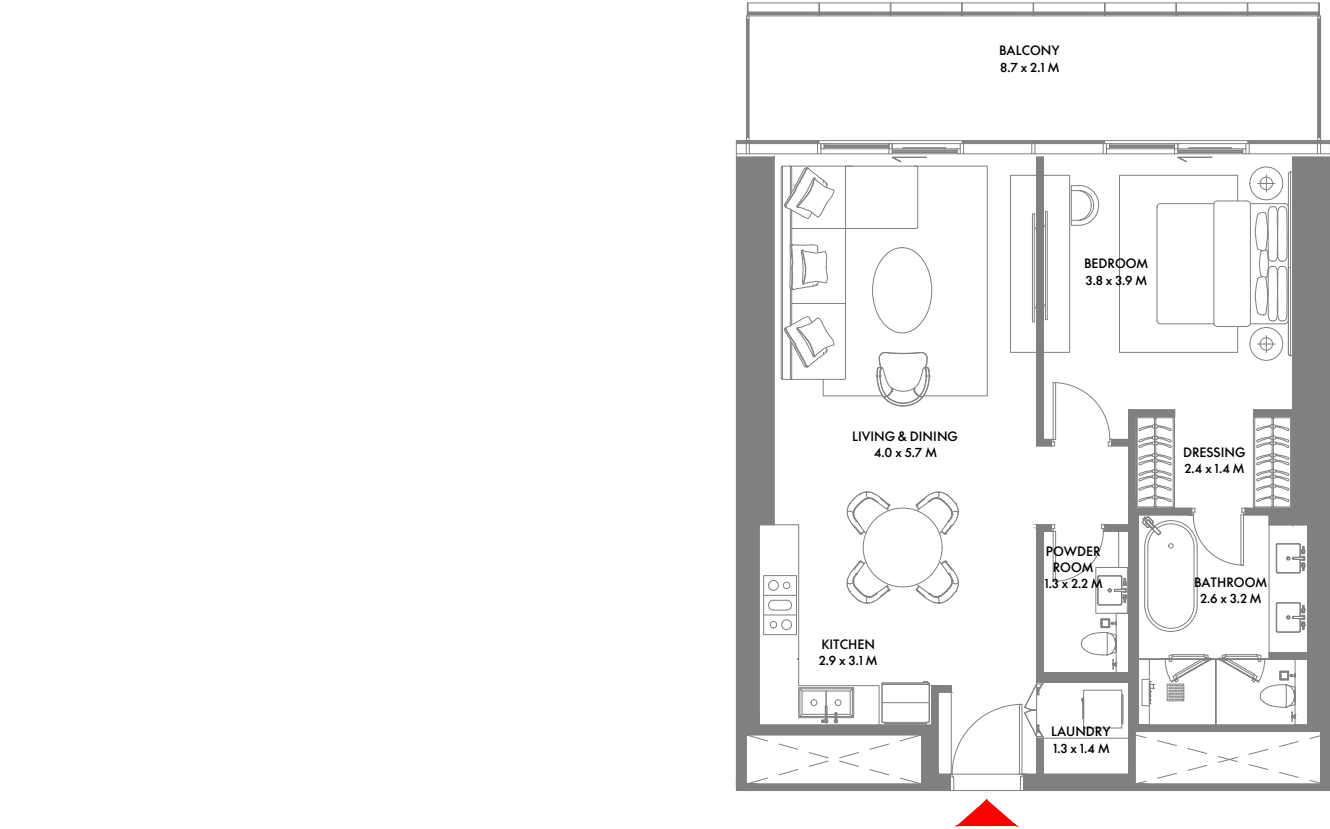


1 Bedroom 2 Bedrooms 2 Bedrooms Duplex 3 Bedrooms 3 Bedrooms Duplex 4 Bedrooms 5 Bedrooms Penthouse 5 Bedrooms Presidential suite

1-Measurements are indicative 'finish to finish' in Metric & Imperial excluding construction tolerance. 2-Plot/unit dimensions may vary from brochure, and unit types/plans may exist as mirrored versions; 3-All images used are for illustrative purposes only. 4-Unless stated otherwise, all fittings and interior decorative items shown are for illustrative purposes only. 5-The developer reserves the right to make alterations, at its absolute discretion, without any liability whatsoever up to the final 'as built' status.

UNIT PLANS

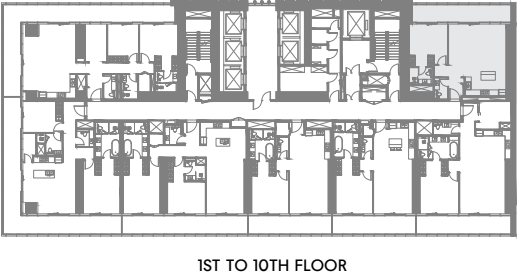
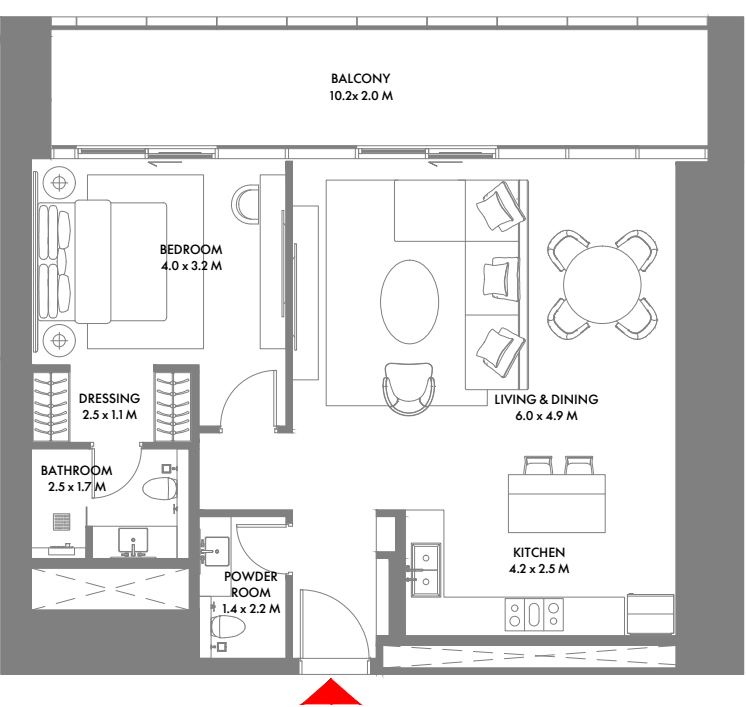




1 Bedroom A

Unit Area: 83.28 Sqm (897 Sqft) | **Balcony Area:** 17.36 Sqm (187 Sqft) | **Total Area:** 100.64 Sqm (1,084 Sqft)

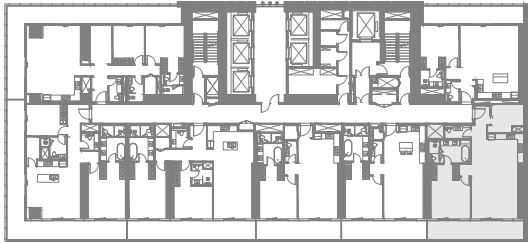
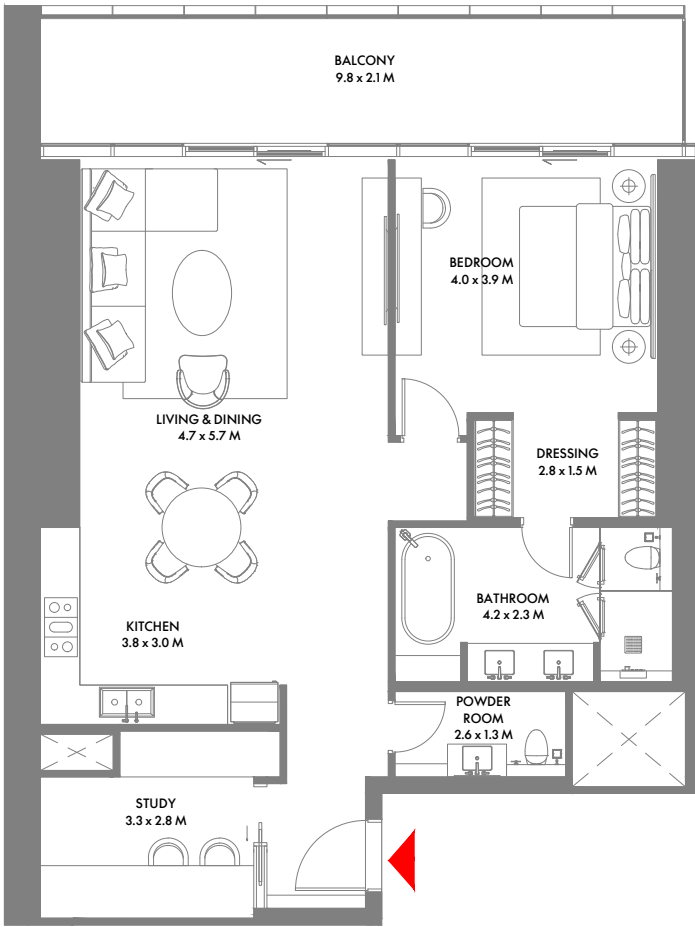
1-Measurements are indicative 'finish to finish' in Metric & Imperial excluding construction tolerance. 2-Plot/unit dimensions may vary from brochure, and unit types/plans may exist as mirrored versions; 3-All images used are for illustrative purposes only. 4-Unless stated otherwise, all fittings and interior decorative items shown are for illustrative purposes only. 5-The developer reserves the right to make alterations, at its absolute discretion, without any liability whatsoever up to the final 'as built' status.



1 Bedroom B

Unit Area: 79.98 Sqm (861 Sqft) | **Balcony Area:** 20.87 Sqm (225 Sqft) | **Total Area:** 100.85 Sqm (1,086 Sqft)

1-Measurements are indicative 'finish to finish' in Metric & Imperial excluding construction tolerance. 2-Plot/unit dimensions may vary from brochure, and unit types/plans may exist as mirrored versions; 3-All images used are for illustrative purposes only. 4-Unless stated otherwise, all fittings and interior decorative items shown are for illustrative purposes only. 5-The developer reserves the right to make alterations, at its absolute discretion, without any liability whatsoever up to the final 'as built' status.

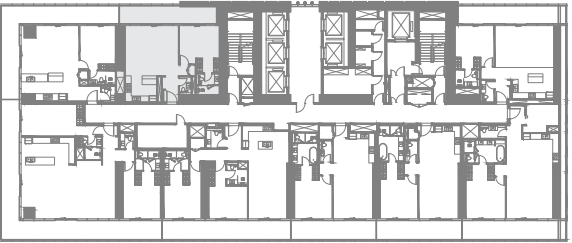
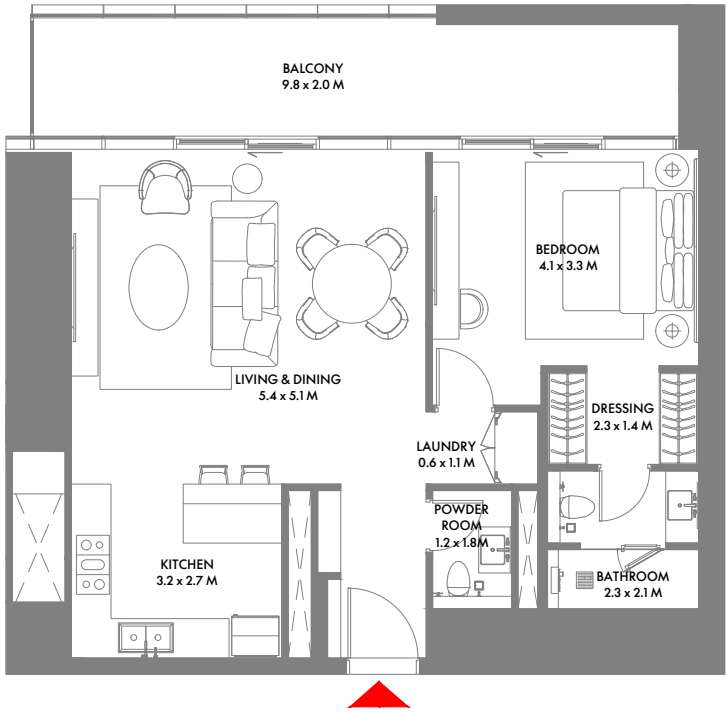


1ST TO 10TH FLOOR

1 Bedroom C

Unit Area: 101.65 Sqm (1,095 Sqft) | **Balcony Area:** 19.69 Sqm (212 Sqft) | **Total Area:** 121.34 Sqm (1,307 Sqft)

1-Measurements are indicative 'finish to finish' in Metric & Imperial excluding construction tolerance. 2-Plot/unit dimensions may vary from brochure, and unit types/plans may exist as mirrored versions; 3-All images used are for illustrative purposes only. 4-Unless stated otherwise, all fittings and interior decorative items shown are for illustrative purposes only. 5-The developer reserves the right to make alterations, at its absolute discretion, without any liability whatsoever up to the final 'as built' status.

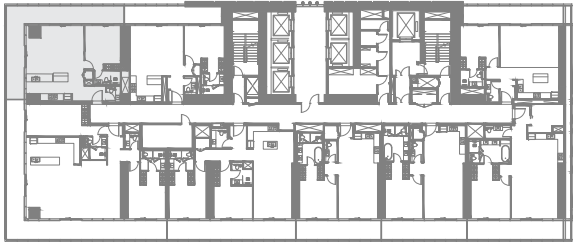
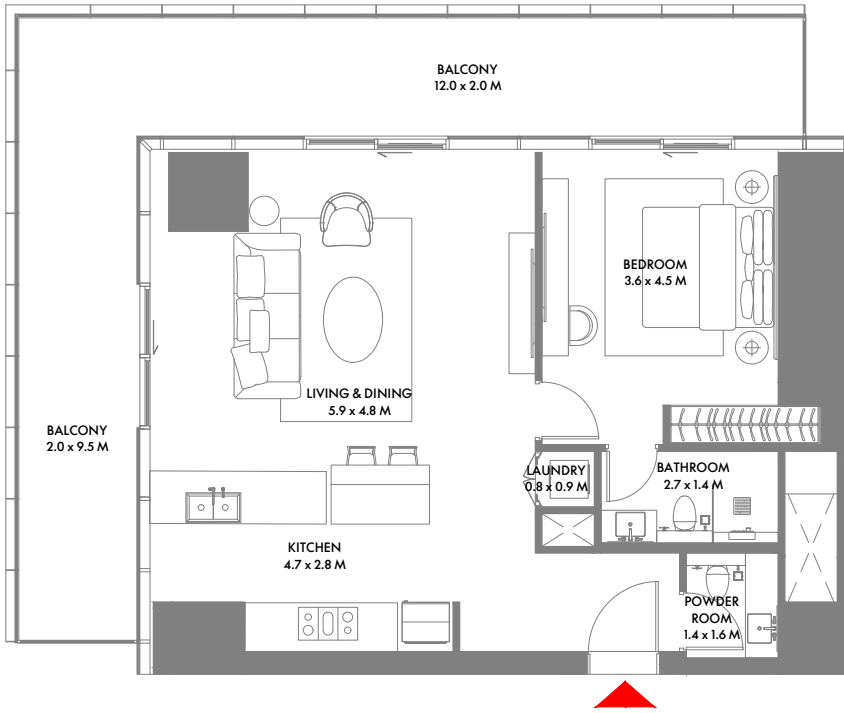


6TH TO 10TH & 14TH TO 19TH FLOOR

1 Bedroom D

Unit Area: 78.53 Sqm (846 Sqft) | **Balcony Area:** 19.86 Sqm (214 Sqft) | **Total Area:** 98.39 Sqm (1,060 Sqft)

1-Measurements are indicative 'finish to finish' in Metric & Imperial excluding construction tolerance. 2-Plot/unit dimensions may vary from brochure, and unit types/plans may exist as mirrored versions; 3-All images used are for illustrative purposes only. 4-Unless stated otherwise, all fittings and interior decorative items shown are for illustrative purposes only. 5-The developer reserves the right to make alterations, at its absolute discretion, without any liability whatsoever up to the final 'as built' status.

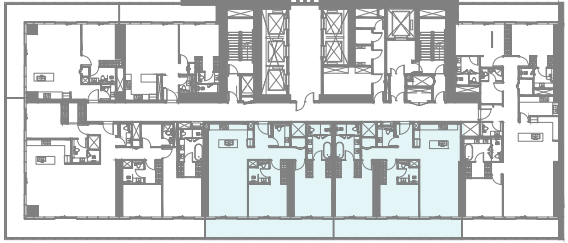
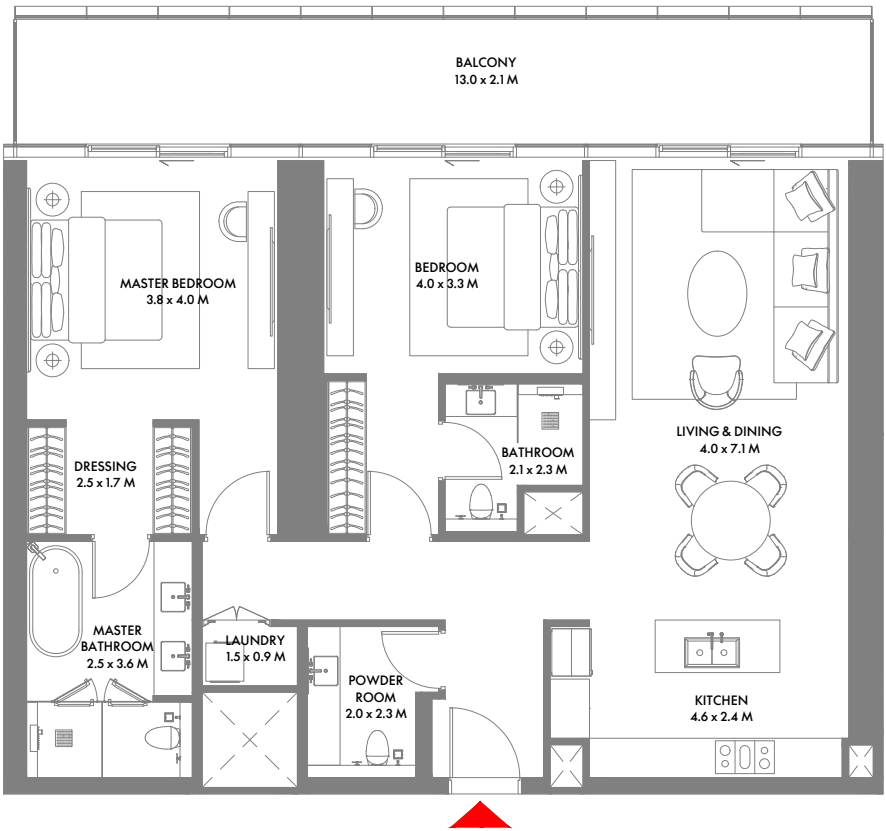


6TH TO 10TH & 14TH TO 19TH FLOOR

1 Bedroom E

Unit Area: 80.20 Sqm (864 Sqft) | **Balcony Area:** 36.93 Sqm (397 Sqft) | **Total Area:** 117.13 Sqm (1,261 Sqft)

1-Measurements are indicative 'finish to finish' in Metric & Imperial excluding construction tolerance. 2-Plot/unit dimensions may vary from brochure, and unit types/plans may exist as mirrored versions; 3-All images used are for illustrative purposes only. 4-Unless stated otherwise, all fittings and interior decorative items shown are for illustrative purposes only. 5-The developer reserves the right to make alterations, at its absolute discretion, without any liability whatsoever up to the final 'as built' status.

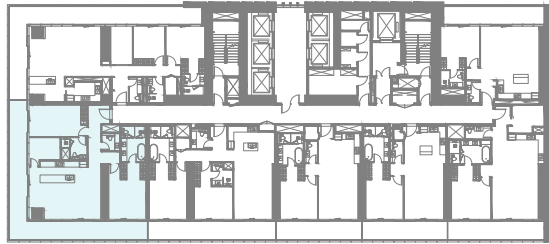
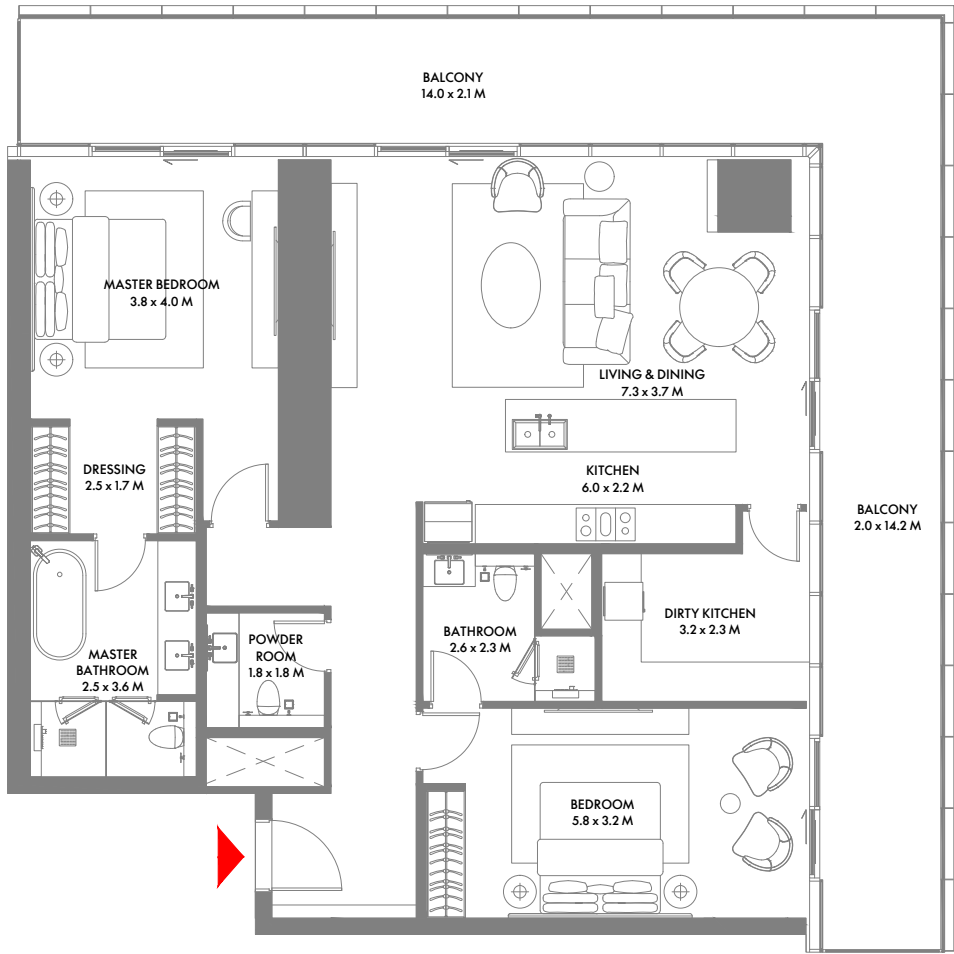


1ST TO 9TH, 14TH TO 21ST & 23RD TO 27TH FLOOR

2 Bedroom A

Unit Area: 122.93 Sqm (1,324 Sqft) | **Balcony Area:** 25.97 Sqm (279 Sqft) | **Total Area:** 148.90 Sqm (1,603 Sqft)

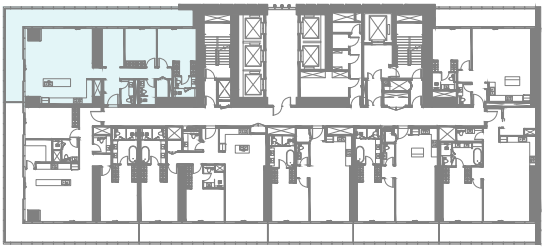
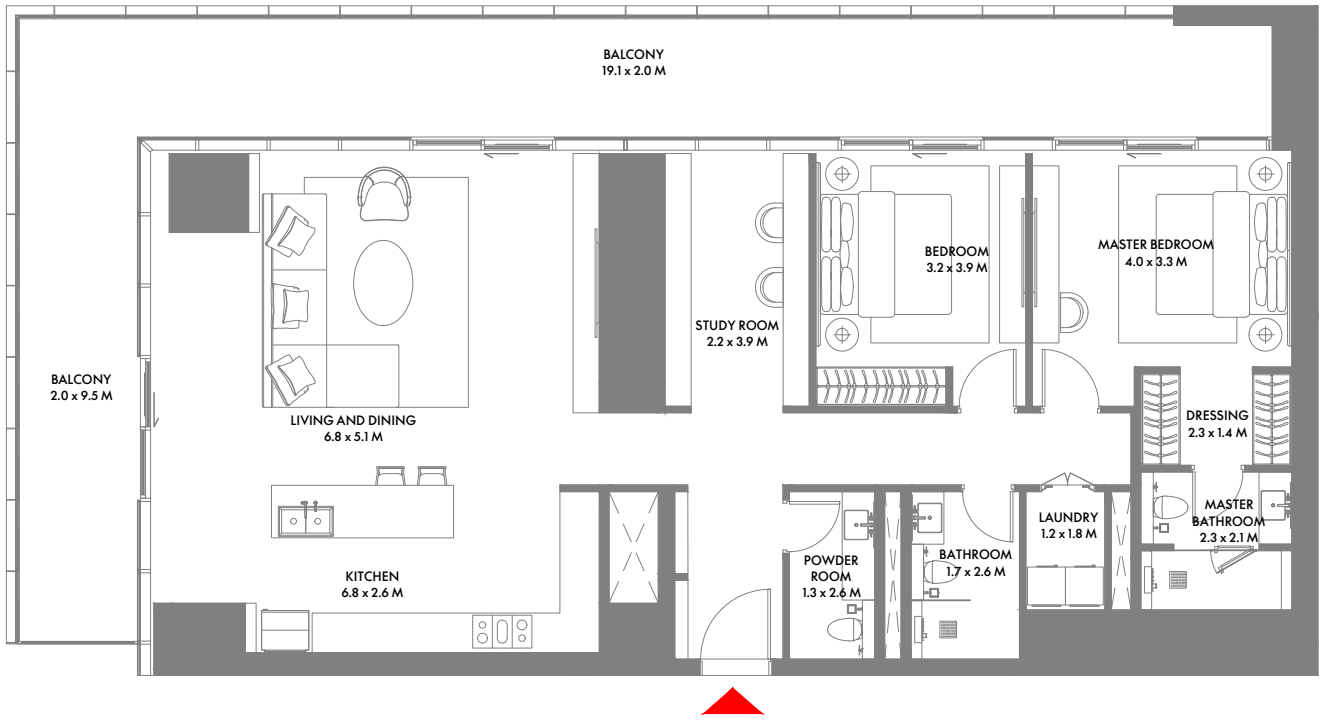
1-Measurements are indicative 'finish to finish' in Metric & Imperial excluding construction tolerance. 2-Plot/unit dimensions may vary from brochure, and unit types/plans may exist as mirrored versions; 3-All images used are for illustrative purposes only. 4-Unless stated otherwise, all fittings and interior decorative items shown are for illustrative purposes only. 5-The developer reserves the right to make alterations, at its absolute discretion, without any liability whatsoever up to the final 'as built' status.



2 Bedroom B

Unit Area: 134.28 Sqm (1,446 Sqft) | **Balcony Area:** 50.85 Sqm (547 Sqft) | **Total Area:** 185.13 Sqm (1,993 Sqft)

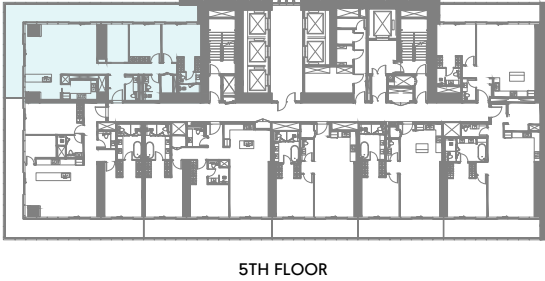
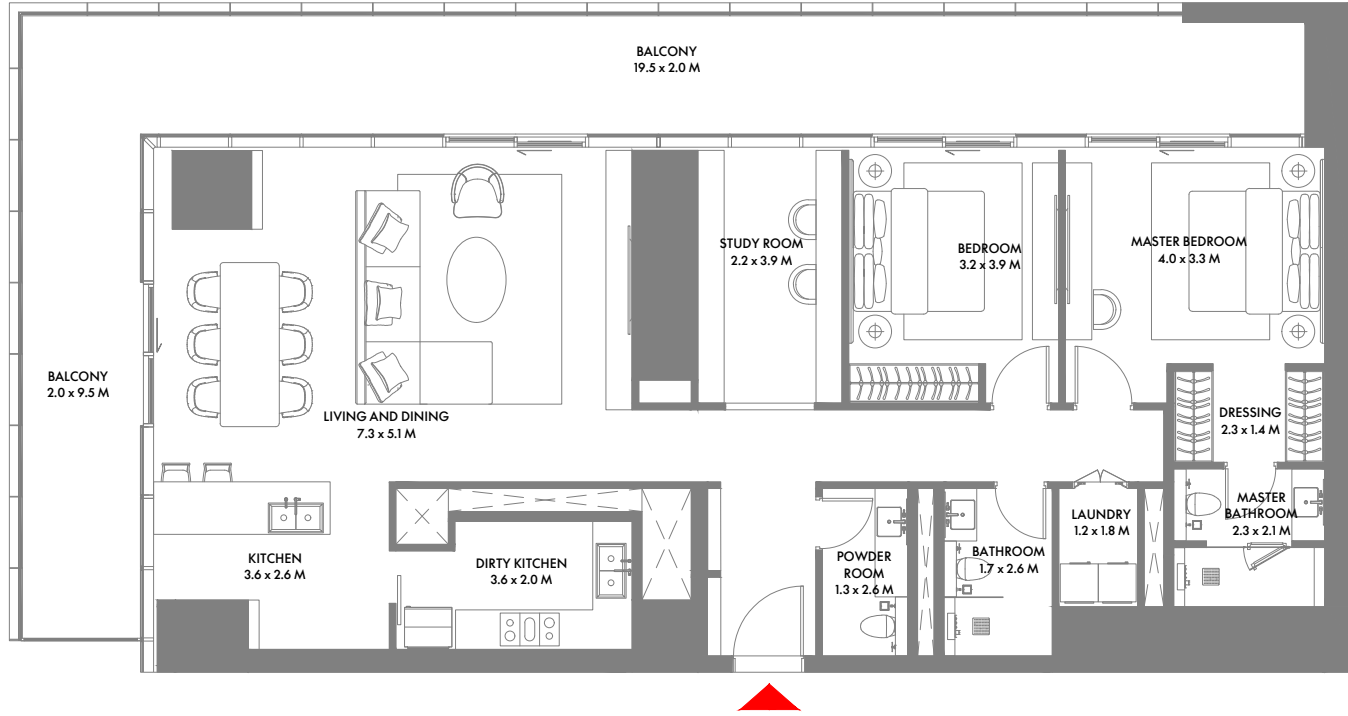
1-Measurements are indicative 'finish to finish' in Metric & Imperial excluding construction tolerance. 2-Plot/unit dimensions may vary from brochure, and unit types/plans may exist as mirrored versions; 3-All images used are for illustrative purposes only. 4-Unless stated otherwise, all fittings and interior decorative items shown are for illustrative purposes only. 5-The developer reserves the right to make alterations, at its absolute discretion, without any liability whatsoever up to the final 'as built' status.



2 Bedroom C

Unit Area: 137.87 Sqm (1,485 Sqft) | **Balcony Area:** 51.56 Sqm (555 Sqft) | **Total Area:** 189.43 Sqm (2,040 Sqft)

1-Measurements are indicative 'finish to finish' in Metric & Imperial excluding construction tolerance. 2-Plot/unit dimensions may vary from brochure, and unit types/plans may exist as mirrored versions; 3-All images used are for illustrative purposes only. 4-Unless stated otherwise, all fittings and interior decorative items shown are for illustrative purposes only. 5-The developer reserves the right to make alterations, at its absolute discretion, without any liability whatsoever up to the final 'as built' status.

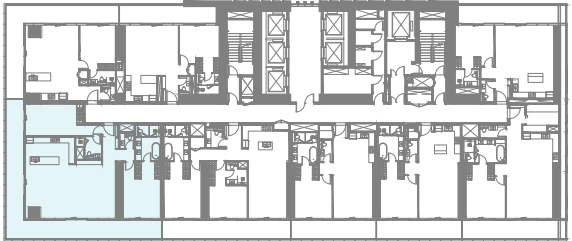
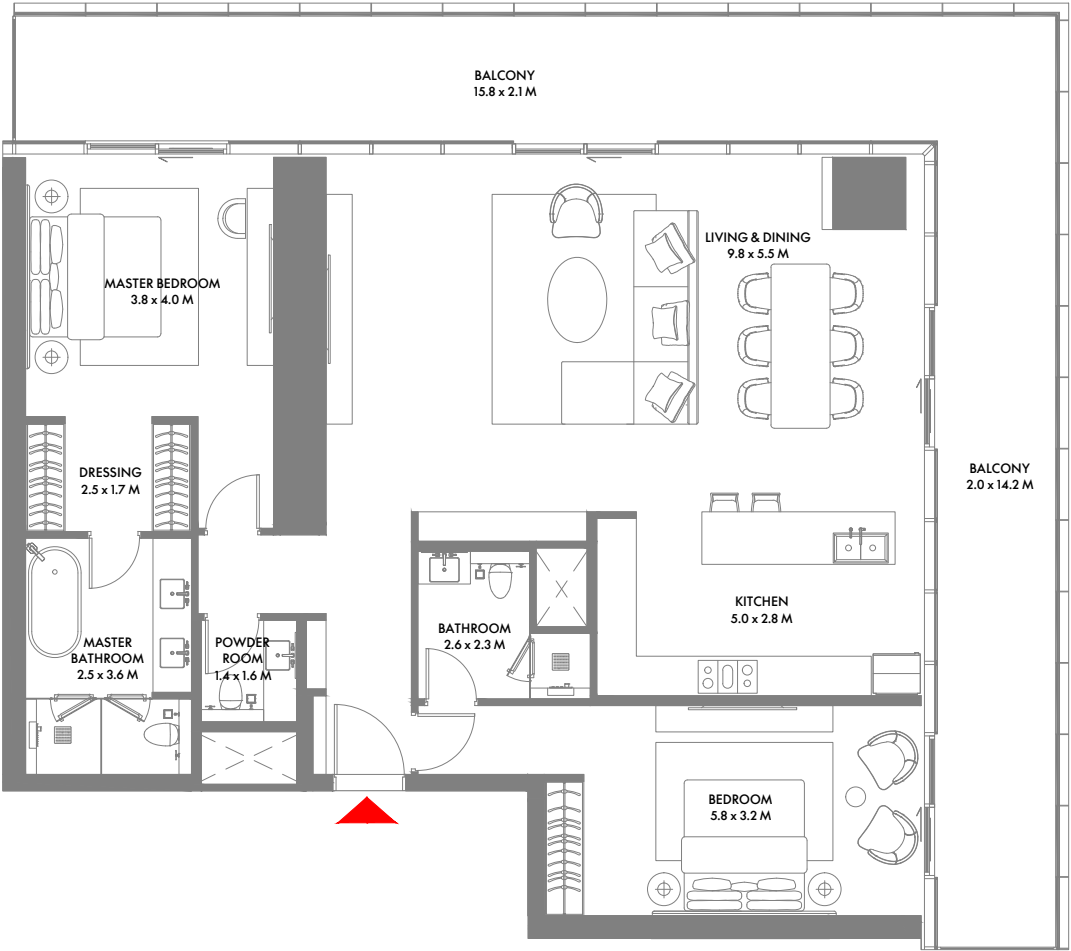


5TH FLOOR

2 Bedroom D

Unit Area: 139.33 Sqm (1,500 Sqft) | **Balcony Area:** 52.40 Sqm (564 Sqft) | **Total Area:** 191.73 Sqm (2,064 Sqft)

1-Measurements are indicative 'finish to finish' in Metric & Imperial excluding construction tolerance. 2-Plot/unit dimensions may vary from brochure, and unit types/plans may exist as mirrored versions; 3-All images used are for illustrative purposes only. 4-Unless stated otherwise, all fittings and interior decorative items shown are for illustrative purposes only. 5-The developer reserves the right to make alterations, at its absolute discretion, without any liability whatsoever up to the final 'as built' status.

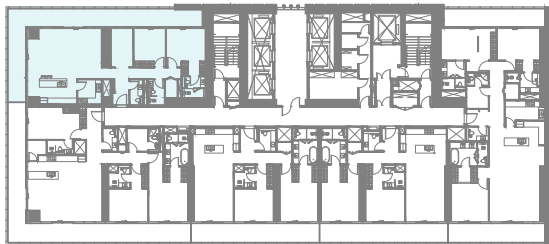
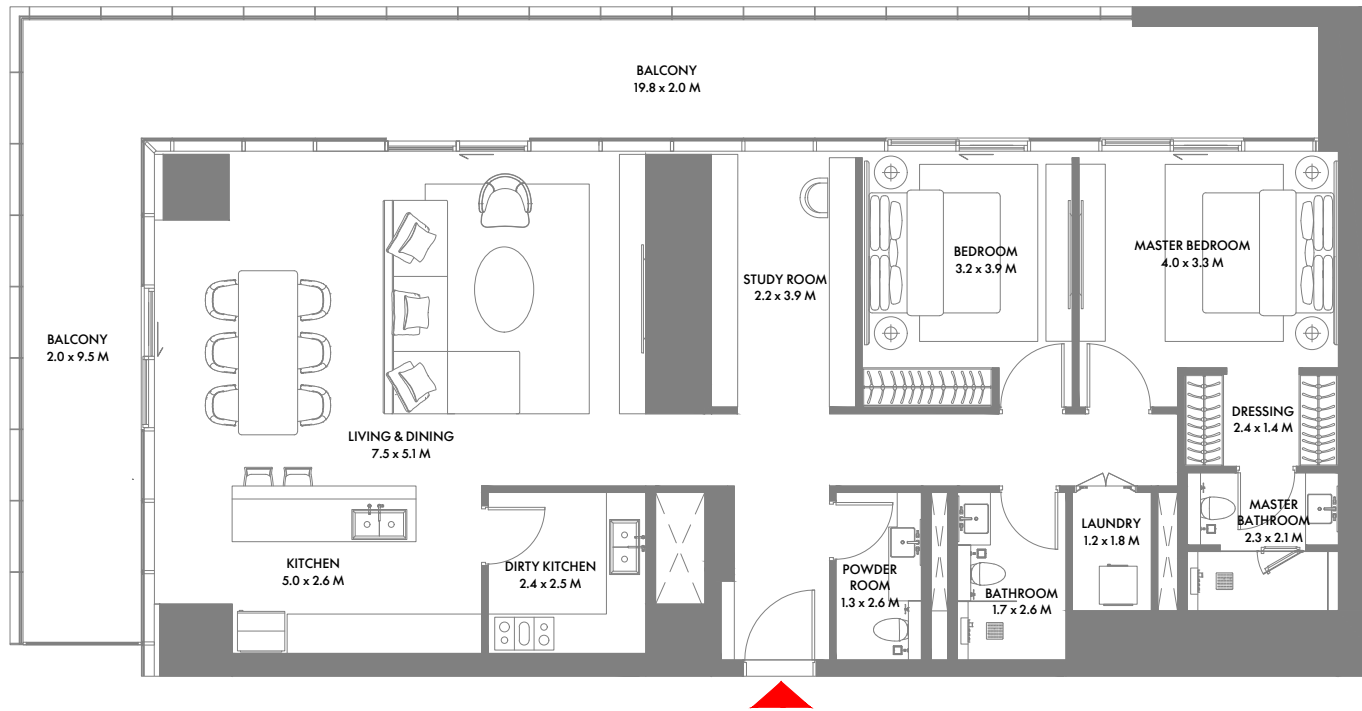


6TH TO 9TH FLOOR

2 Bedroom E

Unit Area: 146.74 Sqm (1,580 Sqft) | **Balcony Area:** 54.62 Sqm (588 Sqft) | **Total Area:** 201.36 Sqm (2,168 Sqft)

1-Measurements are indicative 'finish to finish' in Metric & Imperial excluding construction tolerance. 2-Plot/unit dimensions may vary from brochure, and unit types/plans may exist as mirrored versions; 3-All images used are for illustrative purposes only. 4-Unless stated otherwise, all fittings and interior decorative items shown are for illustrative purposes only. 5-The developer reserves the right to make alterations, at its absolute discretion, without any liability whatsoever up to the final 'as built' status.

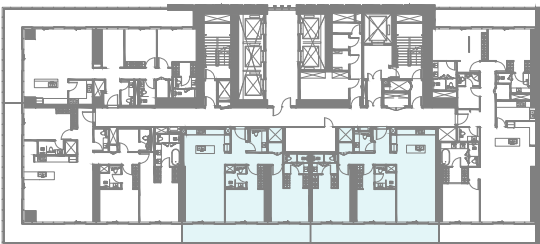
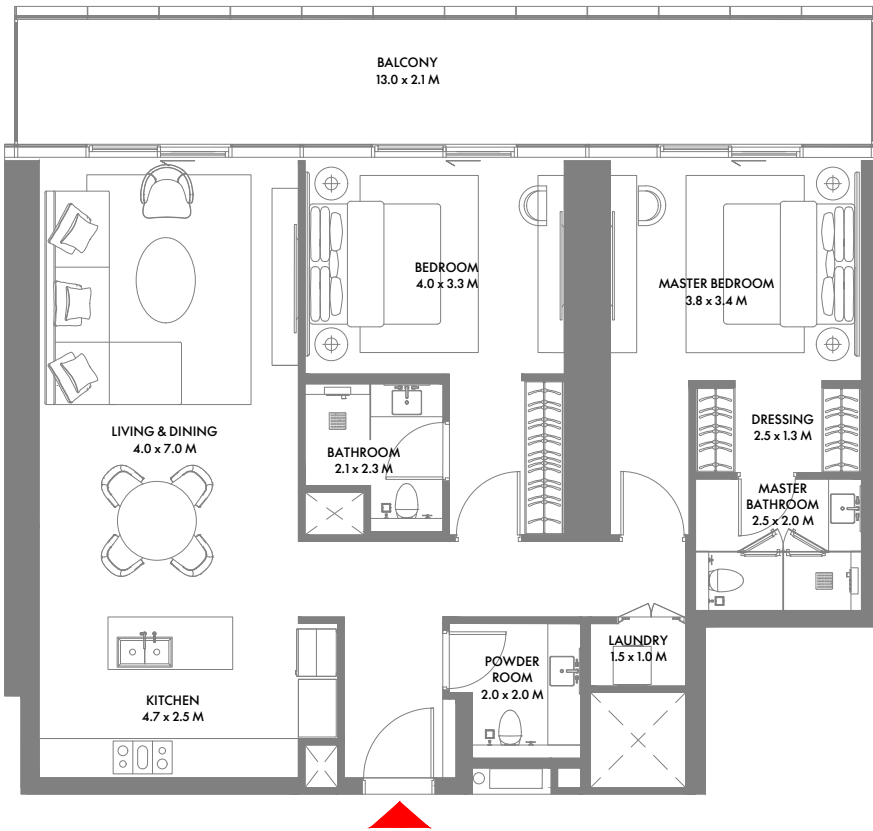


20TH TO 27TH FLOOR

2 Bedroom F

Unit Area: 142.81 Sqm (1,538 Sqft) | **Balcony Area:** 52.89 Sqm (569 Sqft) | **Total Area:** 195.70 Sqm (2,107 Sqft)

1-Measurements are indicative 'finish to finish' in Metric & Imperial excluding construction tolerance. 2-Plot/unit dimensions may vary from brochure, and unit types/plans may exist as mirrored versions; 3-All images used are for illustrative purposes only. 4-Unless stated otherwise, all fittings and interior decorative items shown are for illustrative purposes only. 5-The developer reserves the right to make alterations, at its absolute discretion, without any liability whatsoever up to the final 'as built' status.

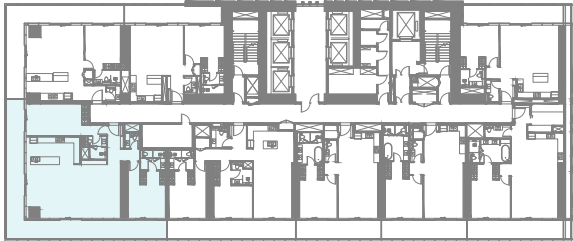
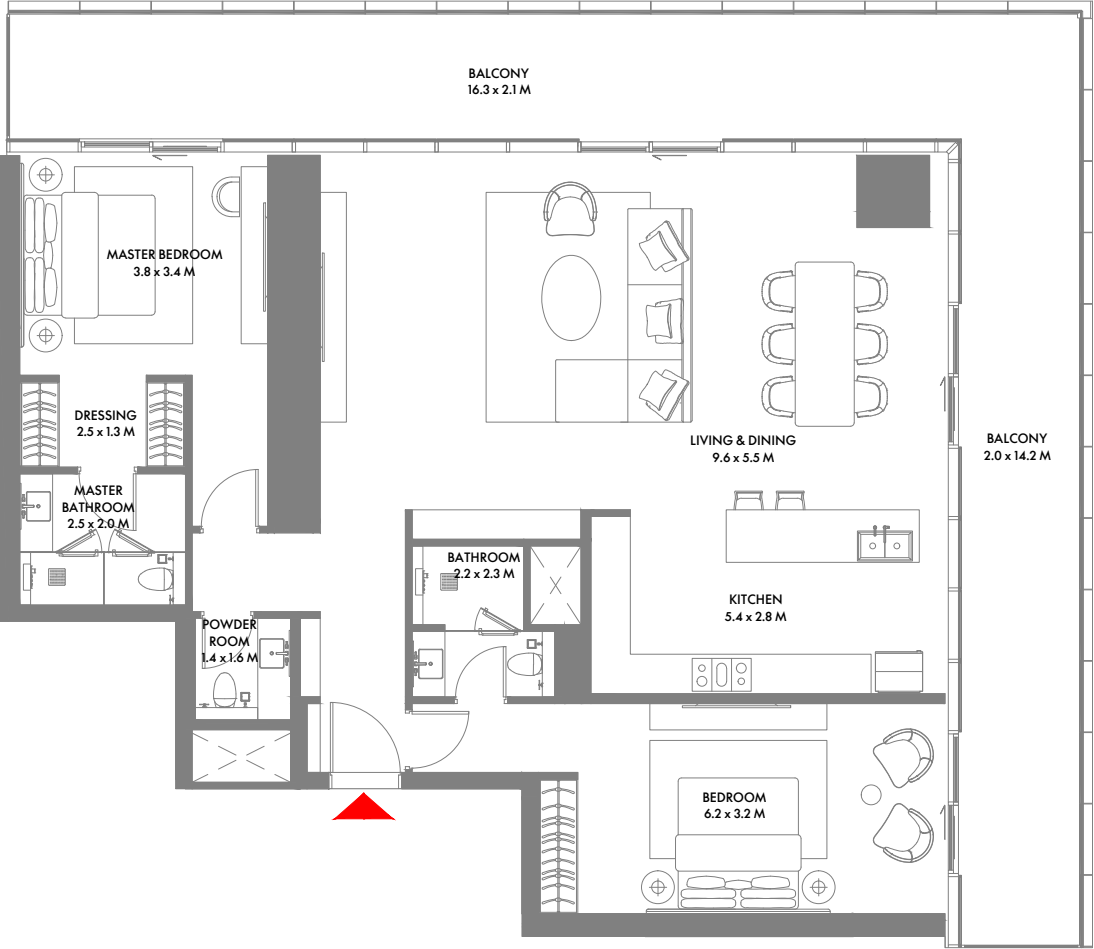


22ND FLOOR

2 Bedroom G

Unit Area: 115.96 Sqm (1,249 Sqft) | **Balcony Area:** 25.97 Sqm (279 Sqft) | **Total Area:** 141.93 Sqm (1,528 Sqft)

1-Measurements are indicative 'finish to finish' in Metric & Imperial excluding construction tolerance. 2-Plot/unit dimensions may vary from brochure, and unit types/plans may exist as mirrored versions; 3-All images used are for illustrative purposes only. 4-Unless stated otherwise, all fittings and interior decorative items shown are for illustrative purposes only. 5-The developer reserves the right to make alterations, at its absolute discretion, without any liability whatsoever up to the final 'as built' status.

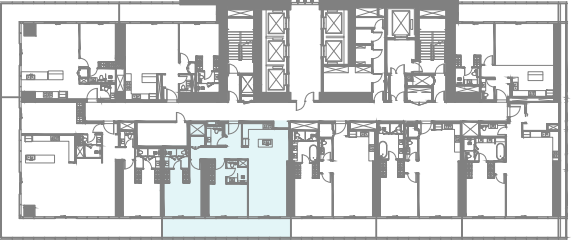
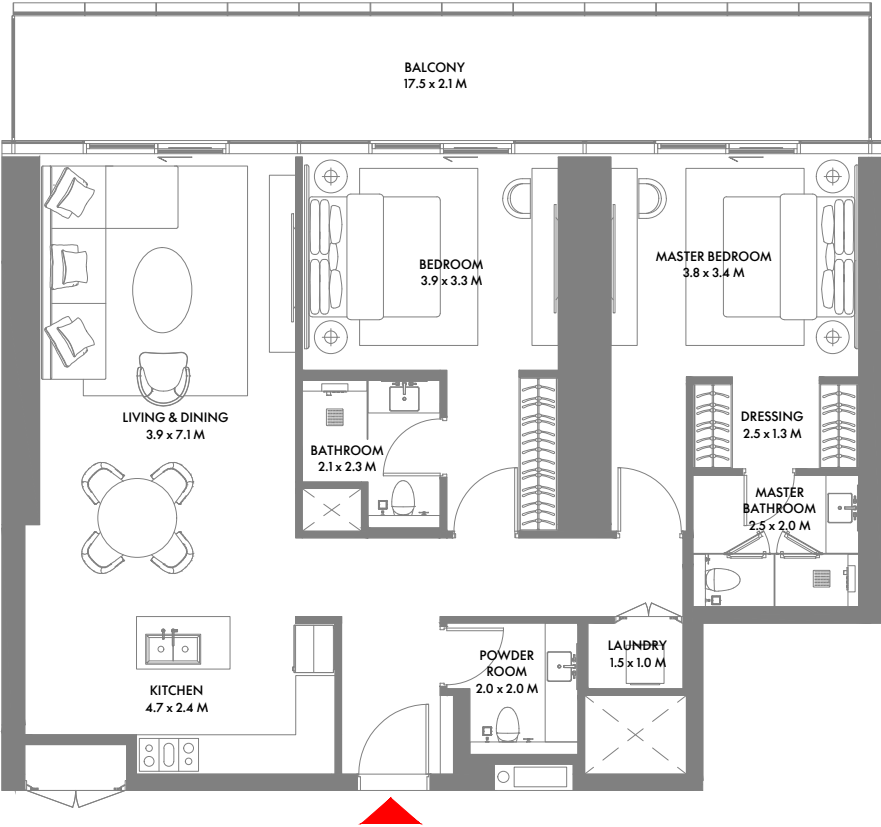


10TH FLOOR

2 Bedroom H

Unit Area: 144.84 Sqm (1,560 Sqft) | **Balcony Area:** 55.51 Sqm (597 Sqft) | **Total Area:** 200.35 Sqm (2,157 Sqft)

1-Measurements are indicative 'finish to finish' in Metric & Imperial excluding construction tolerance. 2-Plot/unit dimensions may vary from brochure, and unit types/plans may exist as mirrored versions; 3-All images used are for illustrative purposes only. 4-Unless stated otherwise, all fittings and interior decorative items shown are for illustrative purposes only. 5-The developer reserves the right to make alterations, at its absolute discretion, without any liability whatsoever up to the final 'as built' status.

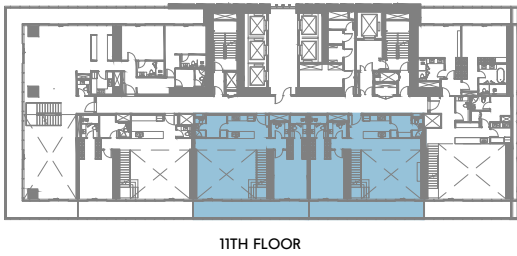
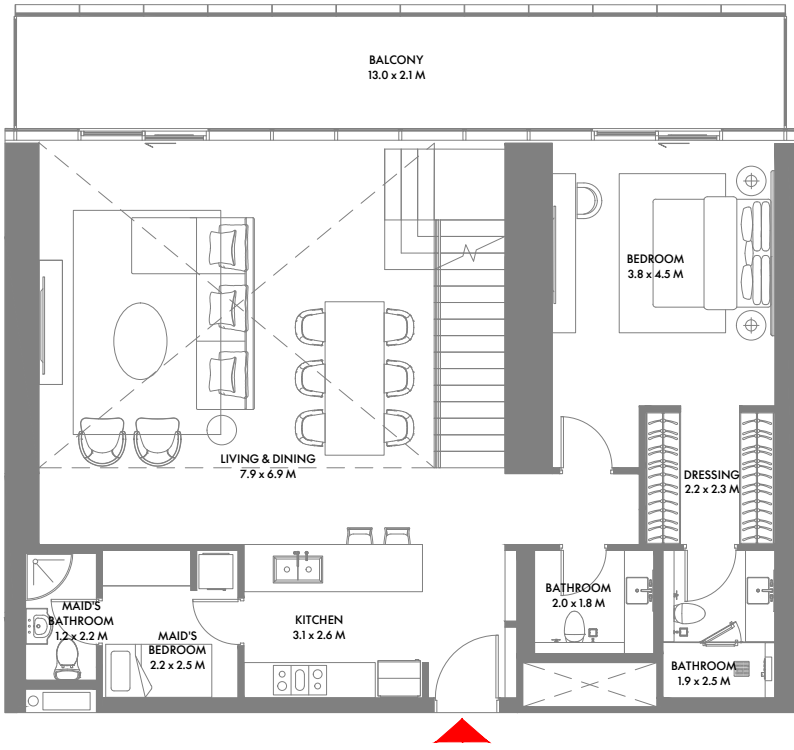


10TH FLOOR

2 Bedroom I

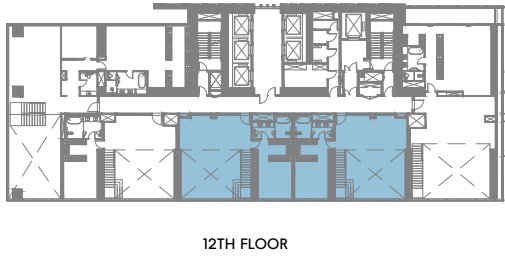
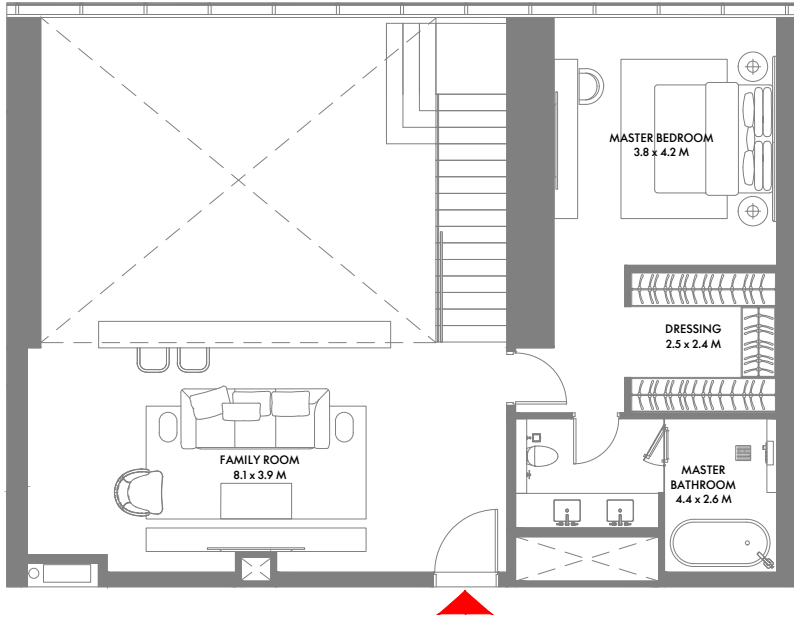
Unit Area: 114.88 Sqm (1,237 Sqft) | **Balcony Area:** 26.04 Sqm (280 Sqft) | **Total Area:** 140.92 Sqm (1,517 Sqft)

1-Measurements are indicative 'finish to finish' in Metric & Imperial excluding construction tolerance. 2-Plot/unit dimensions may vary from brochure, and unit types/plans may exist as mirrored versions; 3-All images used are for illustrative purposes only. 4-Unless stated otherwise, all fittings and interior decorative items shown are for illustrative purposes only. 5-The developer reserves the right to make alterations, at its absolute discretion, without any liability whatsoever up to the final 'as built' status.



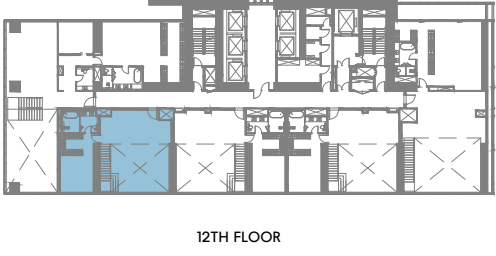
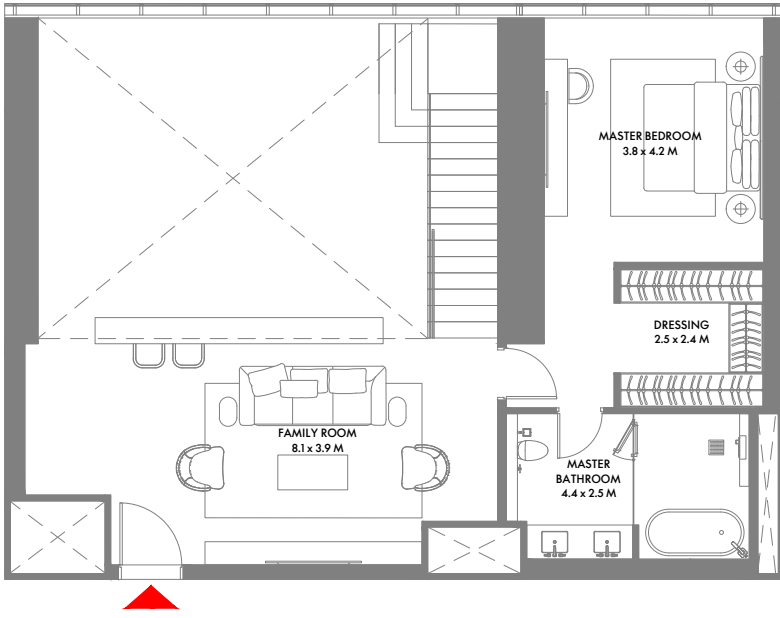
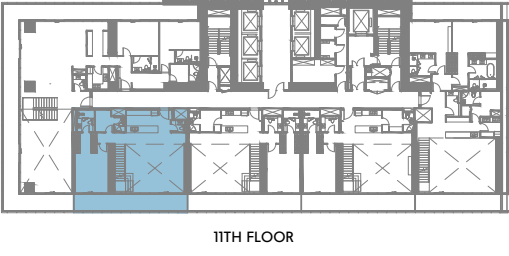
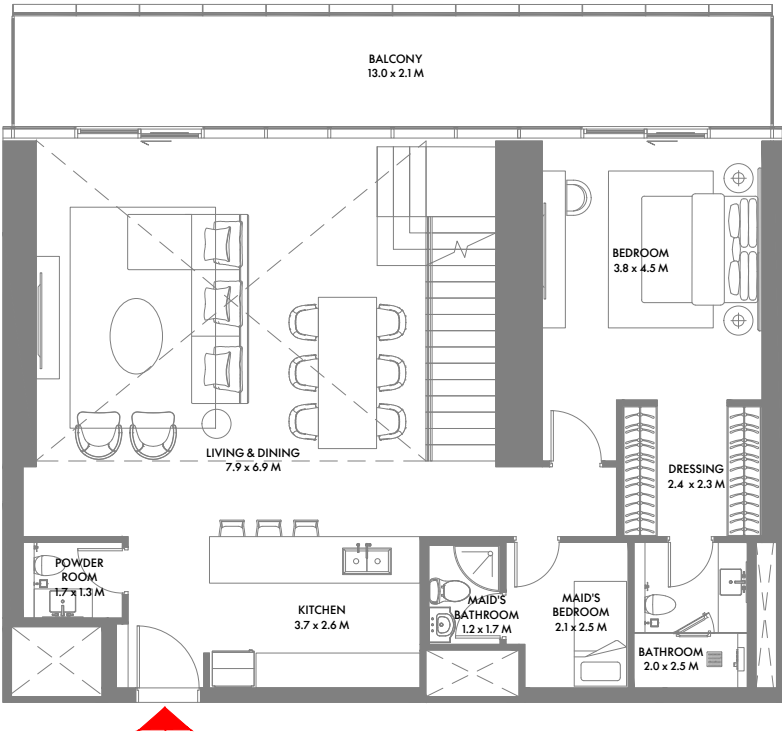
2 Bedroom Duplex A

Unit Area: 211.55 Sqm (2,278 Sqft) | **Balcony Area:** 25.81 Sqm (277 Sqft) | **Total Area:** 237.36 Sqm (2,555 Sqft)



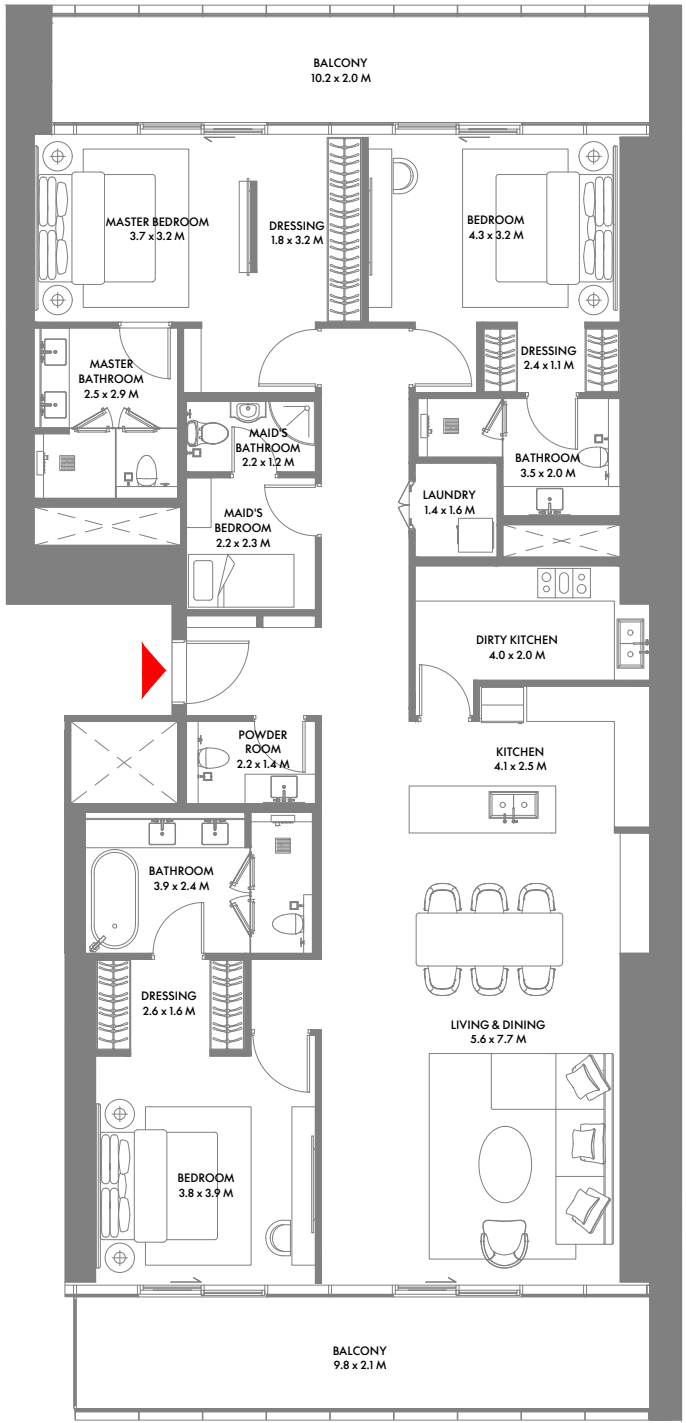
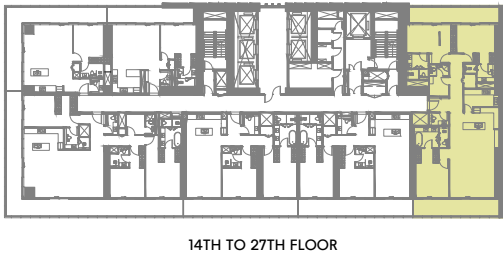
2 Bedroom Duplex B

Unit Area: 207.94 Sqm (2,239 Sqft) | **Balcony Area:** 25.81 Sqm (278 Sqft) | **Total Area:** 233.75 Sqm (2,517 Sqft)



1-Measurements are indicative 'finish to finish' in Metric & Imperial excluding construction tolerance. 2-Plot/unit dimensions may vary from brochure, and unit types/plans may exist as mirrored versions; 3-All images used are for illustrative purposes only. 4-Unless stated otherwise, all fittings and interior decorative items shown are for illustrative purposes only. 5-The developer reserves the right to make alterations, at its absolute discretion, without any liability whatsoever up to the final 'as built' status.

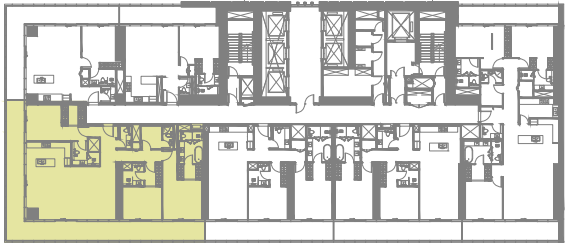
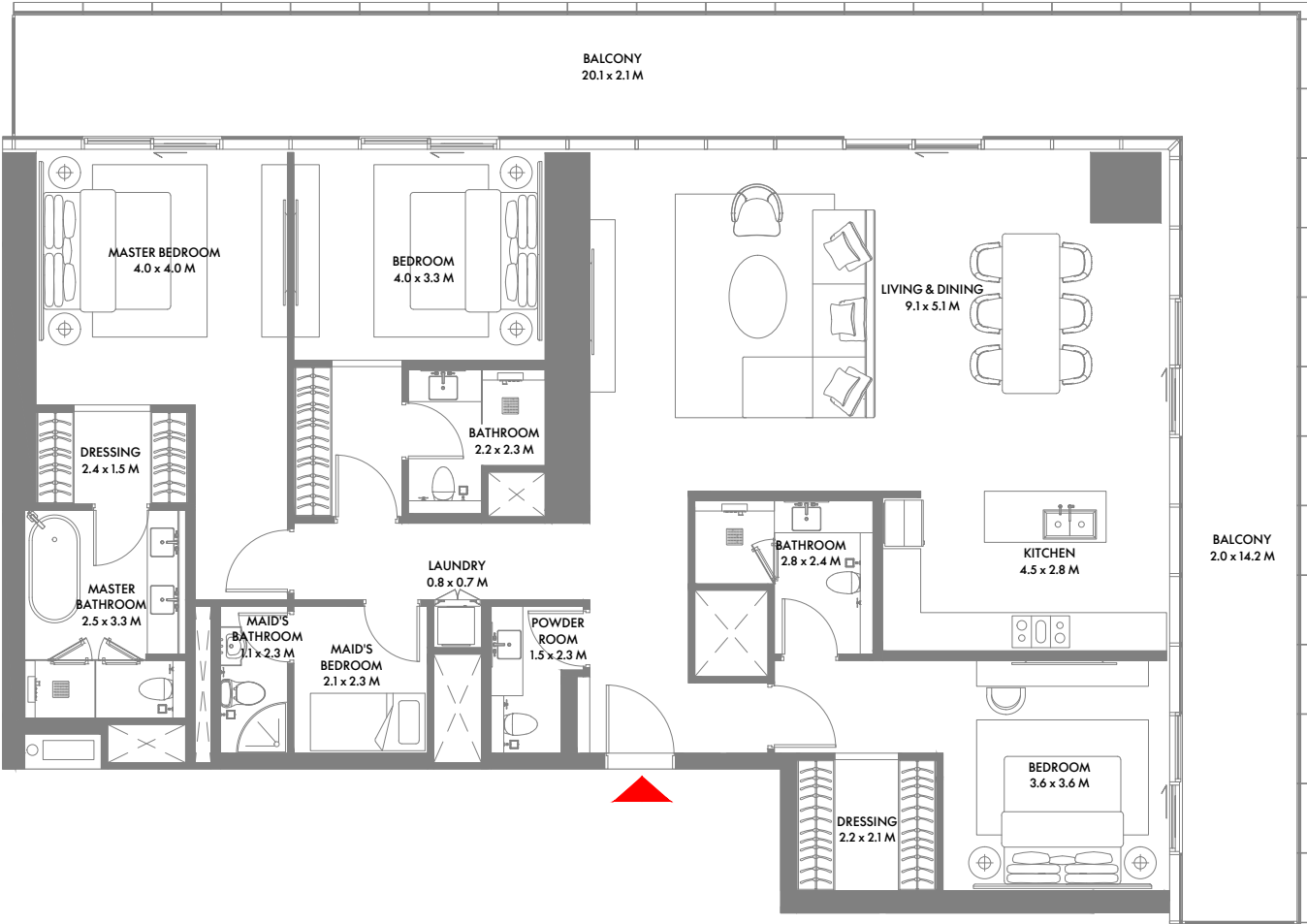
1-Measurements are indicative 'finish to finish' in Metric & Imperial excluding construction tolerance. 2-Plot/unit dimensions may vary from brochure, and unit types/plans may exist as mirrored versions; 3-All images used are for illustrative purposes only. 4-Unless stated otherwise, all fittings and interior decorative items shown are for illustrative purposes only. 5-The developer reserves the right to make alterations, at its absolute discretion, without any liability whatsoever up to the final 'as built' status.



3 Bedroom A

Unit Area: 189.83 Sqm (2,044 Sqft) | **Balcony Area:** 40.47 Sqm (435 Sqft) | **Total Area:** 230.30 Sqm (2,479 Sqft)

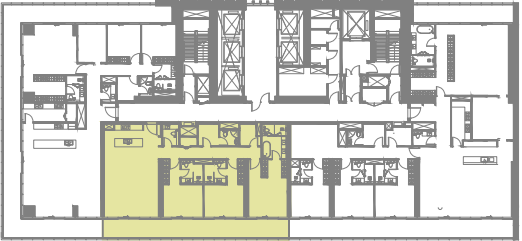
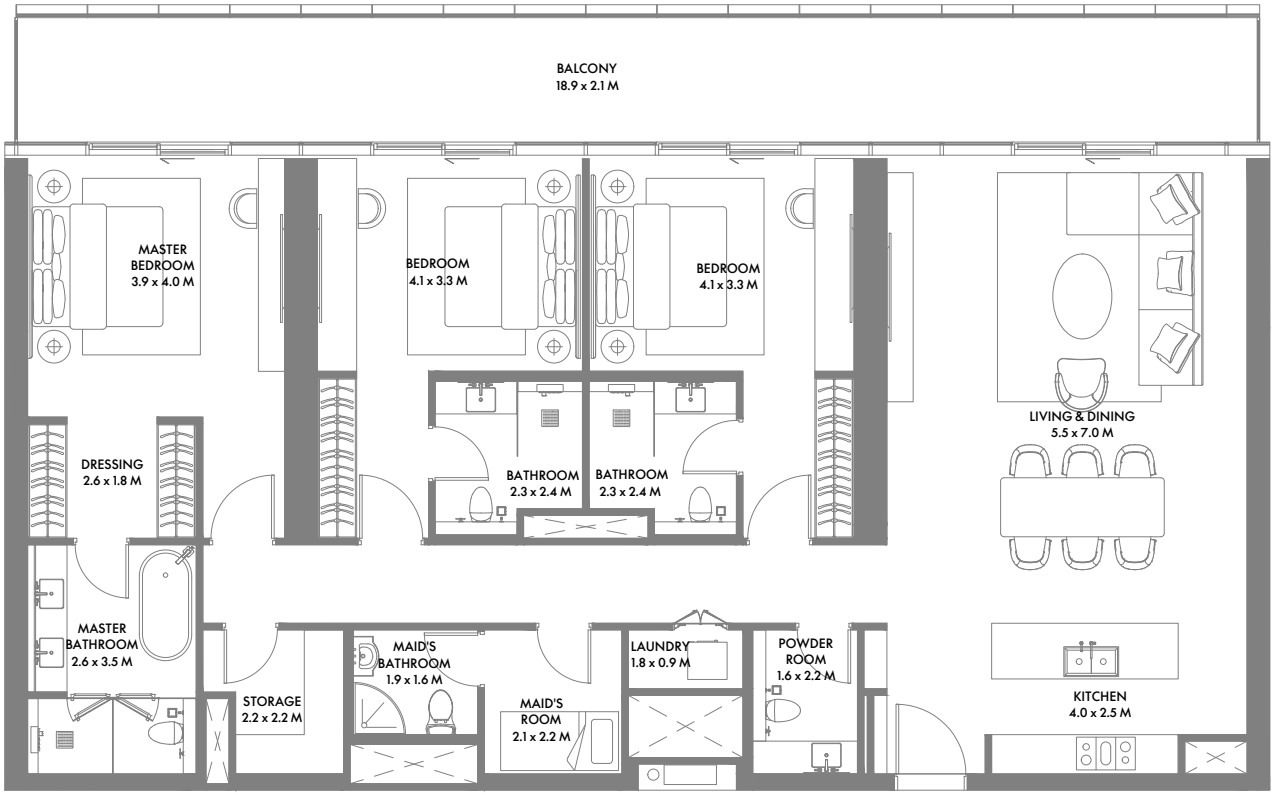
1-Measurements are indicative 'finish to finish' in Metric & Imperial excluding construction tolerance. 2-Plot/unit dimensions may vary from brochure, and unit types/plans may exist as mirrored versions; 3-All images used are for illustrative purposes only. 4-Unless stated otherwise, all fittings and interior decorative items shown are for illustrative purposes only. 5-The developer reserves the right to make alterations, at its absolute discretion, without any liability whatsoever up to the final 'as built' status.



3 Bedroom B

Unit Area: 184.76 Sqm (1,989 Sqft) | **Balcony Area:** 62.89 Sqm (677 Sqft) | **Total Area:** 247.65 Sqm (2,666 Sqft)

1-Measurements are indicative 'finish to finish' in Metric & Imperial excluding construction tolerance. 2-Plot/unit dimensions may vary from brochure, and unit types/plans may exist as mirrored versions; 3-All images used are for illustrative purposes only. 4-Unless stated otherwise, all fittings and interior decorative items shown are for illustrative purposes only. 5-The developer reserves the right to make alterations, at its absolute discretion, without any liability whatsoever up to the final 'as built' status.

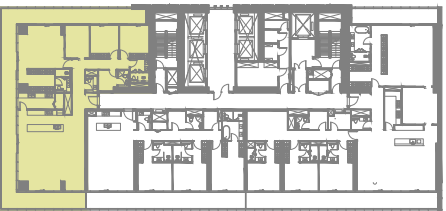


29TH TO 33RD FLOOR

3 Bedroom C

Unit Area: 178.13 Sqm (1,918 Sqft) | **Balcony Area:** 37.69 Sqm (406 Sqft) | **Total Area:** 215.82 Sqm (2,324 Sqft)

1-Measurements are indicative 'finish to finish' in Metric & Imperial excluding construction tolerance. 2-Plot/unit dimensions may vary from brochure, and unit types/plans may exist as mirrored versions; 3-All images used are for illustrative purposes only. 4-Unless stated otherwise, all fittings and interior decorative items shown are for illustrative purposes only. 5-The developer reserves the right to make alterations, at its absolute discretion, without any liability whatsoever up to the final 'as built' status.

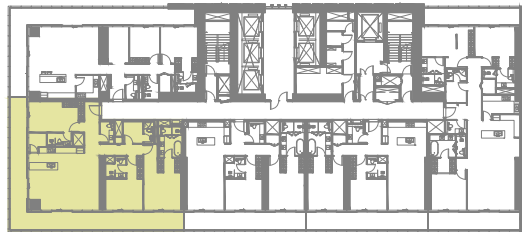
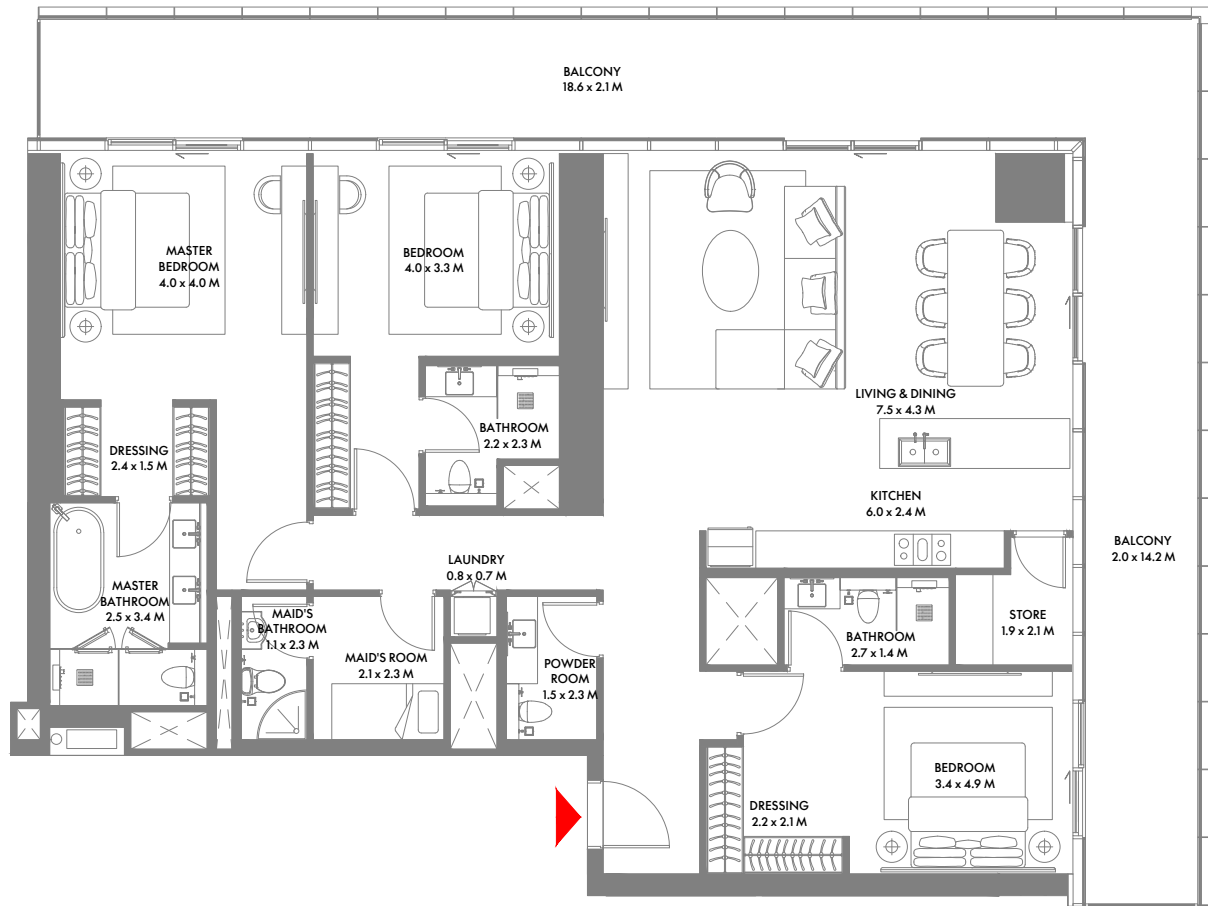


29TH TO 33RD FLOOR

3 Bedroom D

Unit Area: 223.61 Sqm (2,407 Sqft) | **Balcony Area:** 91.18 Sqm (982 Sqft) | **Total Area:** 314.79 Sqm (3,389 Sqft)

1-Measurements are indicative 'finish to finish' in Metric & Imperial excluding construction tolerance. 2-Plot/unit dimensions may vary from brochure, and unit types/plans may exist as mirrored versions; 3-All images used are for illustrative purposes only. 4-Unless stated otherwise, all fittings and interior decorative items shown are for illustrative purposes only. 5-The developer reserves the right to make alterations, at its absolute discretion, without any liability whatsoever up to the final 'as built' status.

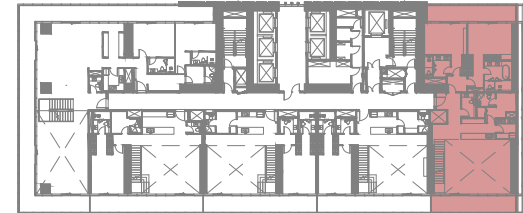
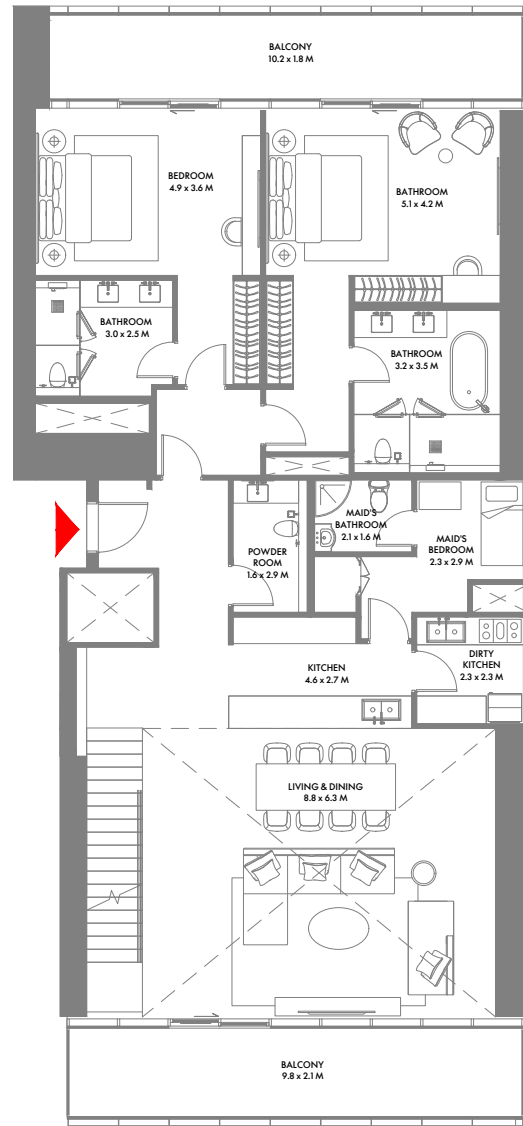


20TH TO 27TH FLOOR

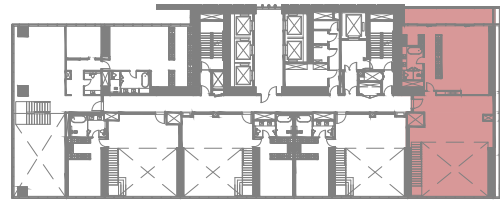
3 Bedroom E

Unit Area: 173.10 Sqm (1,864 Sqft) | Balcony Area: 59.82 Sqm (644 Sqft) | Total Area: 232.92 Sqm (2,508 Sqft)

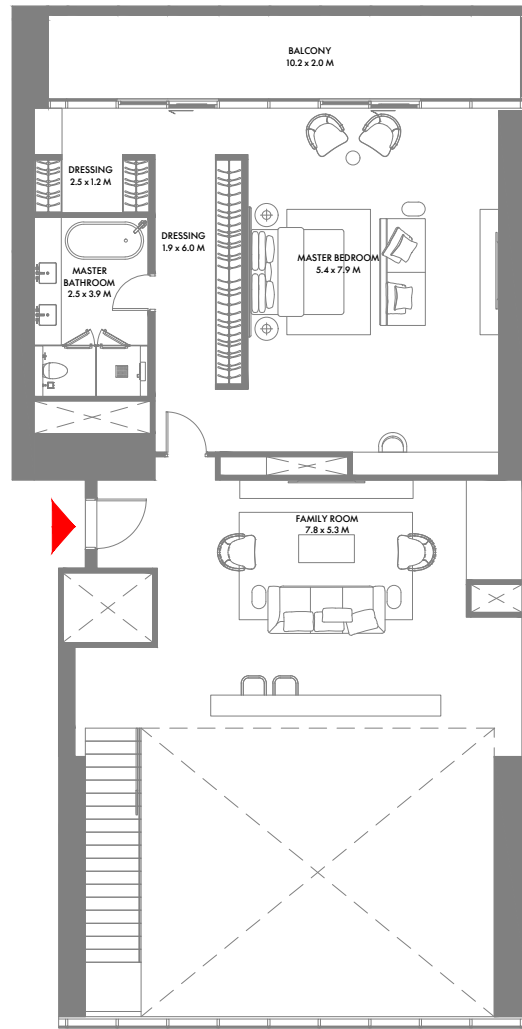
1-Measurements are indicative 'finish to finish' in Metric & Imperial excluding construction tolerance. 2-Plot/unit dimensions may vary from brochure, and unit types/plans may exist as mirrored versions; 3-All images used are for illustrative purposes only. 4-Unless stated otherwise, all fittings and interior decorative items shown are for illustrative purposes only. 5-The developer reserves the right to make alterations, at its absolute discretion, without any liability whatsoever up to the final 'as built' status.



11TH FLOOR



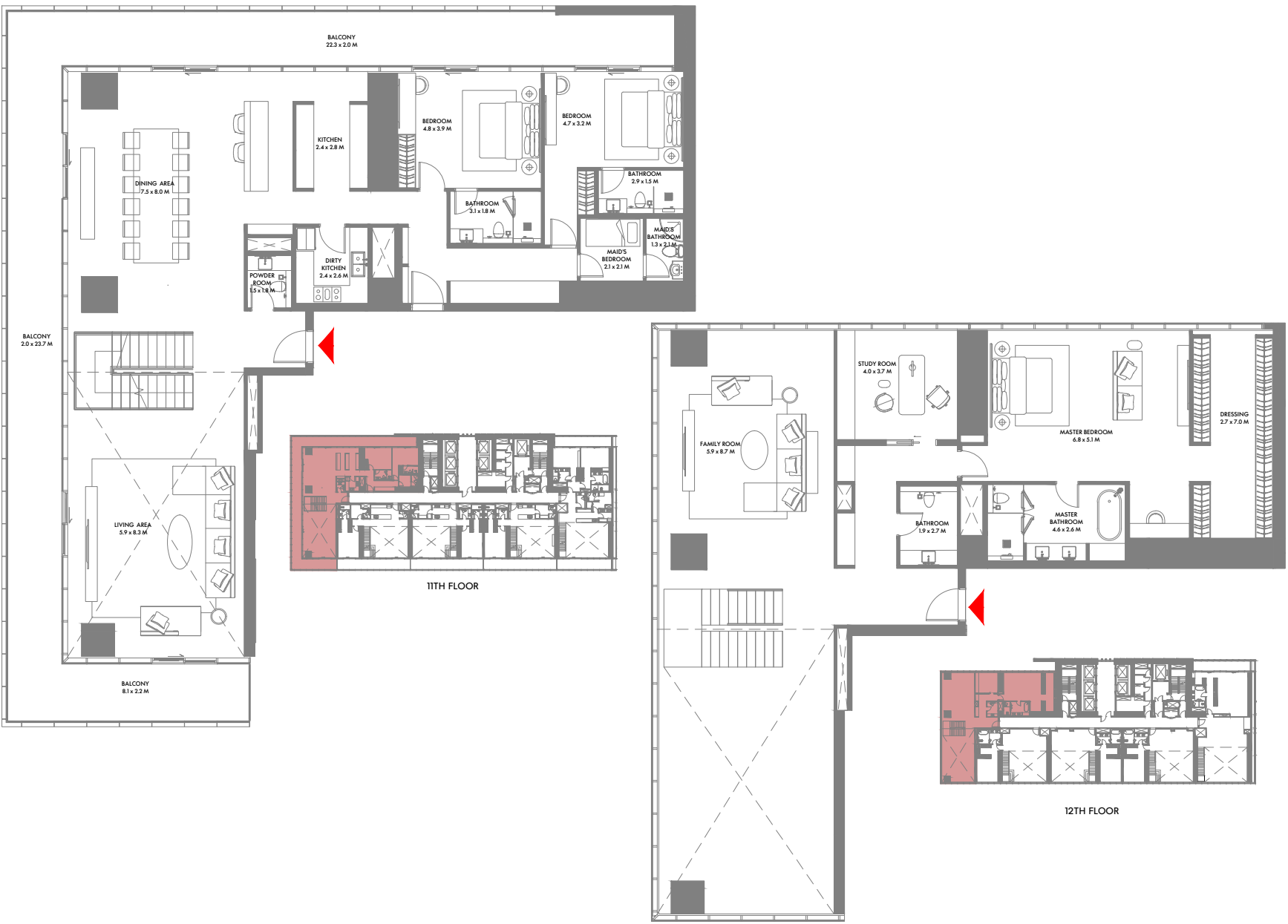
12TH FLOOR



3 Bedroom Duplex A

Unit Area: 336.81 Sqm (3,626 Sqft) | Balcony Area: 60.56 Sqm (652 Sqft) | Total Area: 397.37 Sqm (4,278 Sqft)

1-Measurements are indicative 'finish to finish' in Metric & Imperial excluding construction tolerance. 2-Plot/unit dimensions may vary from brochure, and unit types/plans may exist as mirrored versions; 3-All images used are for illustrative purposes only. 4-Unless stated otherwise, all fittings and interior decorative items shown are for illustrative purposes only. 5-The developer reserves the right to make alterations, at its absolute discretion, without any liability whatsoever up to the final 'as built' status.



3 Bedroom Duplex B

Unit Area: 435.88 Sqm (4,692 Sqft) | Balcony Area: 96.48 Sqm (1,039 Sqft) | Total Area: 532.36 Sqm (5,731 Sqft)

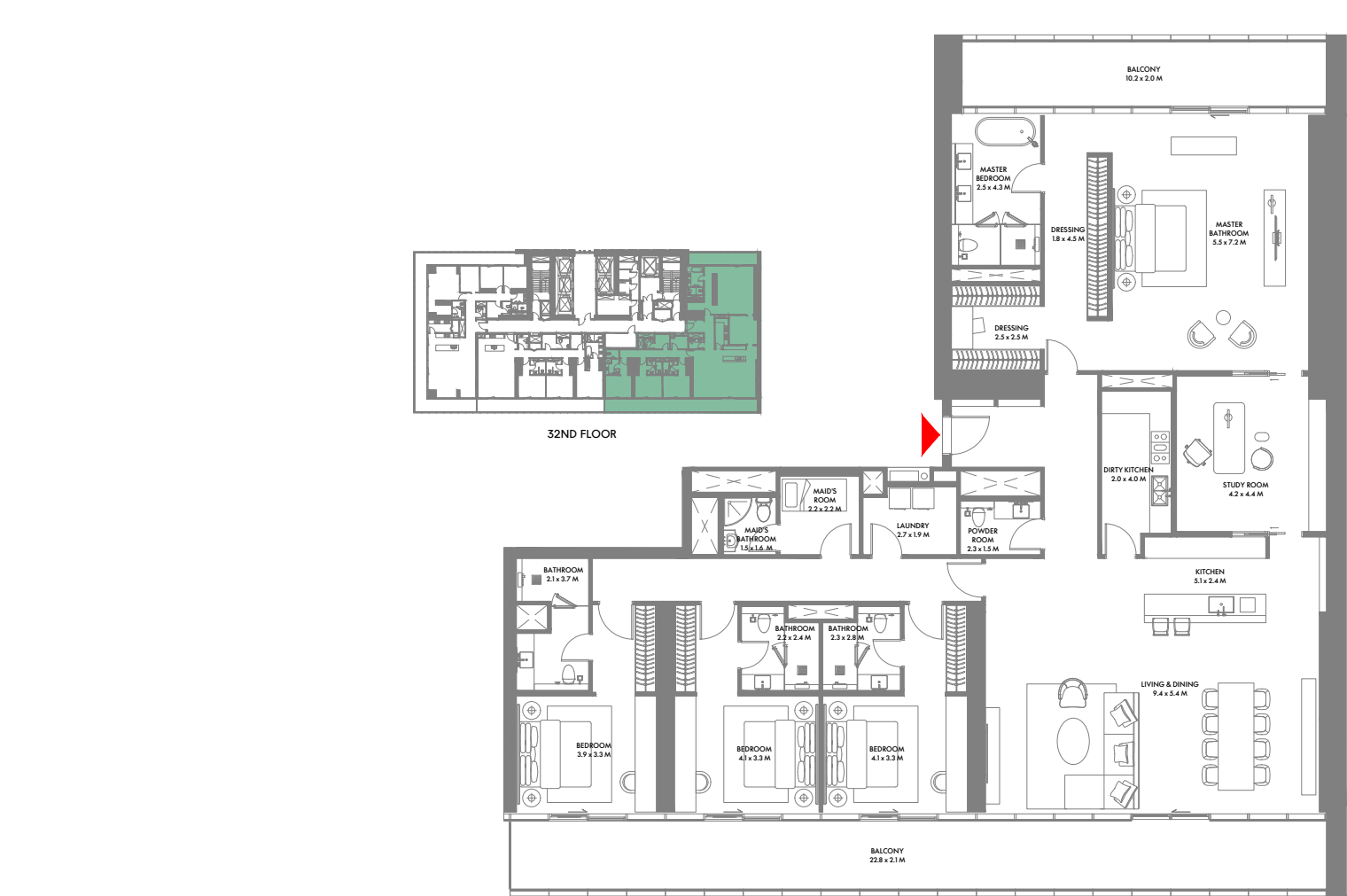
1-Measurements are indicative 'finish to finish' in Metric & Imperial excluding construction tolerance. 2-Plot/unit dimensions may vary from brochure, and unit types/plans may exist as mirrored versions; 3-All images used are for illustrative purposes only. 4-Unless stated otherwise, all fittings and interior decorative items shown are for illustrative purposes only. 5-The developer reserves the right to make alterations, at its absolute discretion, without any liability whatsoever up to the final 'as built' status.



4 Bedroom A

Unit Area: 322.01 Sqm (3,467 Sqft) | Balcony Area: 66.24 Sqm (713 Sqft) | Total Area: 388.25 Sqm (4,180 Sqft)

1-Measurements are indicative 'finish to finish' in Metric & Imperial excluding construction tolerance. 2-Plot/unit dimensions may vary from brochure, and unit types/plans may exist as mirrored versions; 3-All images used are for illustrative purposes only. 4-Unless stated otherwise, all fittings and interior decorative items shown are for illustrative purposes only. 5-The developer reserves the right to make alterations, at its absolute discretion, without any liability whatsoever up to the final 'as built' status.



4 Bedroom B

Unit Area: 310.48 Sqm (3,343 Sqft) | **Balcony Area:** 66.24 Sqm (713 Sqft) | **Total Area:** 376.72 Sqm (4,056 Sqft)

1-Measurements are indicative 'finish to finish' in Metric & Imperial excluding construction tolerance. 2-Plot/unit dimensions may vary from brochure, and unit types/plans may exist as mirrored versions; 3-All images used are for illustrative purposes only. 4-Unless stated otherwise, all fittings and interior decorative items shown are for illustrative purposes only. 5-The developer reserves the right to make alterations, at its absolute discretion, without any liability whatsoever up to the final 'as built' status.



5 Bedroom Penthouse

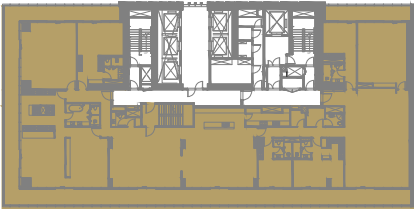
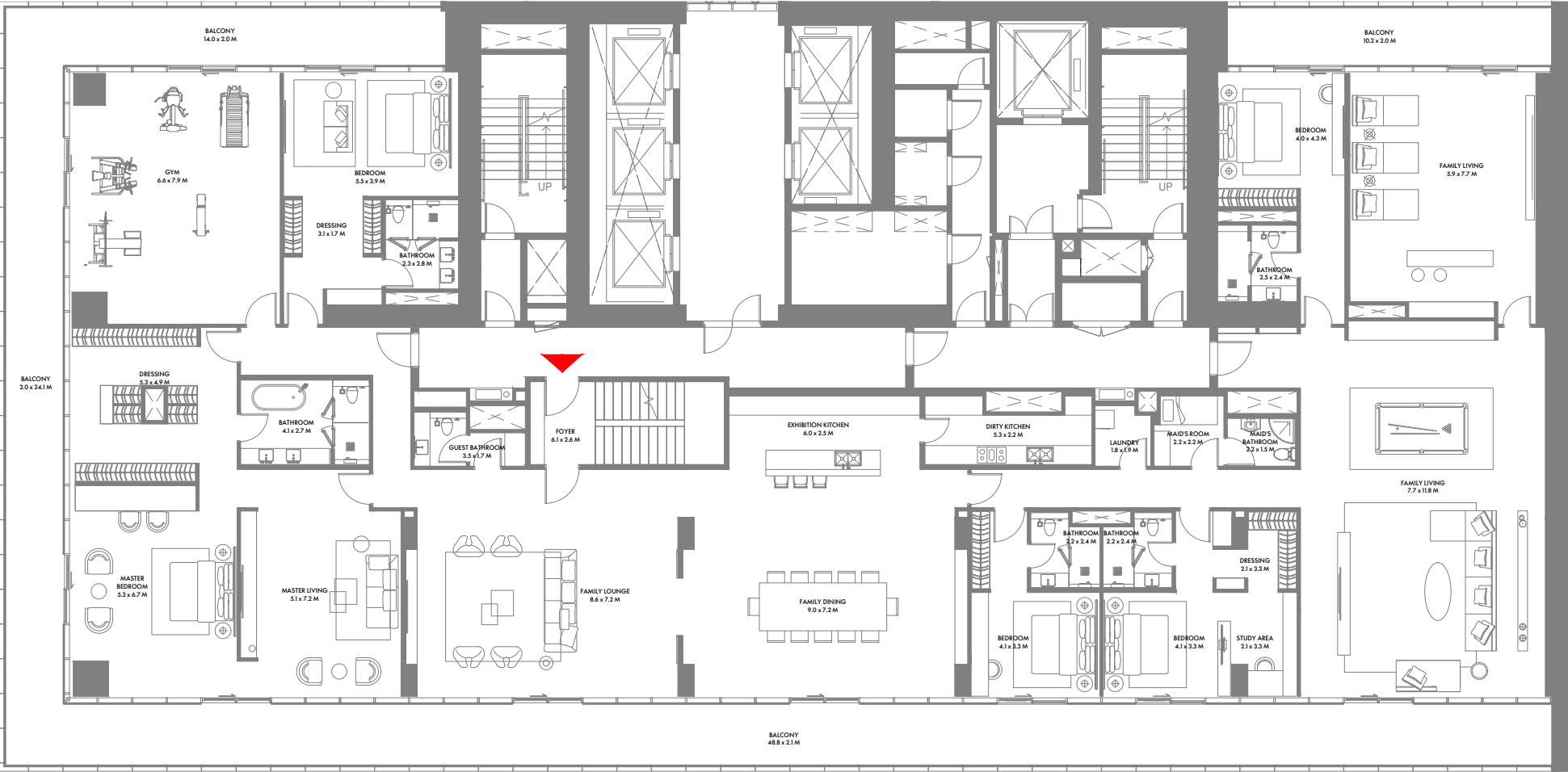
Unit Area: 385.20 Sqm (4,147 Sqft) | **Balcony Area:** 123.14 Sqm (1,325 Sqft) | **Total Area:** 508.34 Sqm (5,472 Sqft)

1-Measurements are indicative 'finish to finish' in Metric & Imperial excluding construction tolerance. 2-Plot/unit dimensions may vary from brochure, and unit types/plans may exist as mirrored versions; 3-All images used are for illustrative purposes only. 4-Unless stated otherwise, all fittings and interior decorative items shown are for illustrative purposes only. 5-The developer reserves the right to make alterations, at its absolute discretion, without any liability whatsoever up to the final 'as built' status.

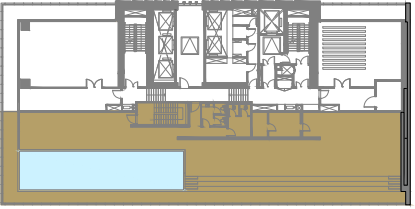


PRESIDENTIAL SUITE





41ST FLOOR



ROOF FLOOR

Presidential Suite

Unit Area: 736.36 Sqm (7,927 Sqft) | Balcony Area: 182.02 Sqm (1,959 Sqft) | Terrace Area: 485.70 Sqm (5,228 Sqft) | Total Area: 1,404.08 Sqm (15,114 Sqft)

1-Measurements are indicative 'finish to finish' in Metric & Imperial excluding construction tolerance. 2-Plot/unit dimensions may vary from brochure, and unit types/plans may exist as mirrored versions; 3-All images used are for illustrative purposes only. 4-Unless stated otherwise, all fittings and interior decorative items shown are for illustrative purposes only. 5-The developer reserves the right to make alterations, at its absolute discretion, without any liability whatsoever up to the final 'as built' status.

ABOUT ARADA

Launched in 2017 and headquartered in the UAE, Arada was created to build spaces people connect with for healthier, happier and more meaningful lives. Arada's scope of operation covers property development, retail, education and hospitality.

Arada has so far launched four record-breaking communities in the Emirate of Sharjah, Aljada, Masaar, Anantara Sharjah Resort & Residences and Nasma Residences as well as Jouri Hills at Jumeirah Golf Estates and Armani Beach Residences at Palm Jumeirah and W Residences at Dubai Harbour, all in Dubai.



Aljada Discovery Center, Aljada, Sharjah | Masaar Discovery Center, Masaar, Sharjah | Arada HQ: 19th Floor, Festival Tower, Dubai Festival City, Dubai
800-ARADA (27232) | info@arada.com; arada.com; [f](#) [@](#) [x](#) [in](#) [@aradaliving](#)

W Residences Dubai Harbour are not owned, developed or sold by Marriott International, Inc. or its affiliates ("Marriott"). Arada Developments LLC and EGR Group LLC use the W marks under a license from Marriott, which has not confirmed the accuracy of any of the statements or representations made herein.

