

An aerial photograph of a historic stone castle with multiple towers and spires, situated on a hillside overlooking a wide river. The river is lined with lush green vineyards and a small town with colorful buildings. A white cruise ship is visible on the river. The scene is captured from a high angle, showing the layout of the castle and the surrounding landscape.

**FREE
AIRFARE**

CALL FOR DETAILS

Rhine Castles & Moselle Vineyards

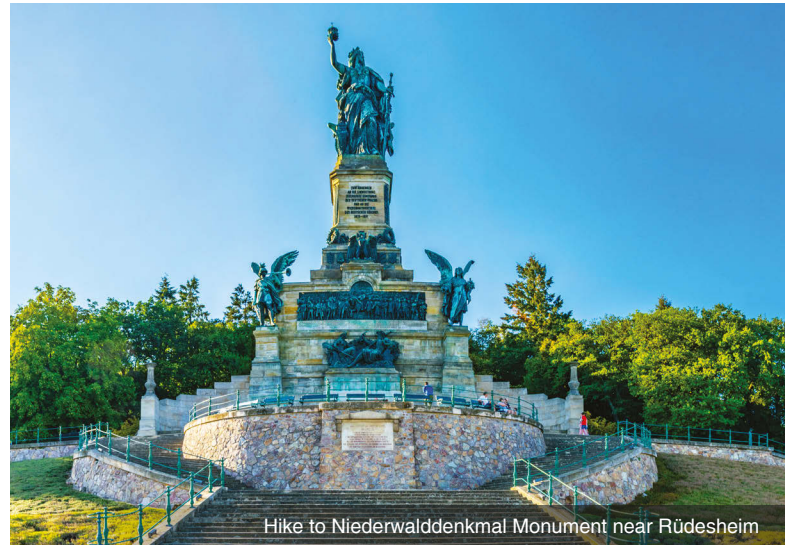
France • Germany • the Netherlands

2024 Departure Date: September 7 - 18, 2024

The logo features a stylized globe with a grid pattern, positioned above the word "Mayflower" in a bold, serif font. Below "Mayflower" are the words "CRUISES & TOURS" in a smaller, sans-serif font, and at the bottom, "A DIVISION OF THE SCENIC GROUP" in an even smaller font.

Mayflower
CRUISES & TOURS
A DIVISION OF THE SCENIC GROUP

Rhine Castles & Moselle Vineyards



DAY 1 Depart the USA: Depart the USA on your overnight flight to Zurich, Switzerland.

DAY 2 Zurich, Switzerland – Basel: Upon arrival at Zurich airport, you will be met and transferred to your innovative Emerald Cruises Star-Ship in Basel, where your friendly captain and crew will welcome your arrival. Please book your flight to arrive in Zurich before 2:00pm. **Meal: D**

DAY 3 Breisach, Germany – Colmar, France: Commence your magical morning with a tour of Colmar. As you walk down the cobblestone lanes, it's easy to imagine the characters from the Grimm's Fairy Tales here, where window boxes full of colorful blooms adorn the half-timbered façades. Alternatively, embark on a canoeing adventure on the banks of the Rhine. **Meals: B, L, D**
EmeraldACTIVE: Canoeing on the banks of the Rhine

DAY 4 Kehl, Germany – Strasbourg, France: This morning, dock in Kehl and journey by coach to the medieval capital of France's Alsace Region, Strasbourg. The best way to discover Strasbourg's charm is via its quaint waterways. Embark on an EmeraldPLUS traditional canal boat tour. Relax as you pass through petite France, full of storybook canals, half-timbered houses, and narrow lanes. Witness the covered bridges and the Vauban Dam before reaching the UNESCO World Heritage Neustadt imperial quarter, where many of Strasbourg's administrative buildings are based. This afternoon, enjoy free time to explore at leisure. **Meals: B, L, D**
DiscoverMORE: Alsace wine route with tasting (additional expense)

DAY 5 Mainz, Germany: Your day will start with a guided tour of Mainz and visit to the impressive sandstone cathedral of the tremendous Old Town. **Meals: B, L, D**
DiscoverMORE: Visit to Gutenberg Museum & workshop (additional expense)

DAY 6 Rudesheim: As part of your incredible EmeraldPLUS program, visit the grand Schloss Johannisberg Winery. Set in the breathtaking Rheingau region, the legendary Schloss Johannisberg is steeped in history, cultivating exquisite wine for over 1000 years. The first Riesling winery in the world, at Schloss Johannisberg, discover a unique wine culture and fabled history during this exclusive tour. Set over 124 acres in front of the Taunus mountains, the onsite 300-acre forest grows native oak to make the wooden barrels used for producing this exemplary wine. These extra-special barrels are then kept in the 900-year-old abbey cellar, known as 'Bibliotheca Subterranea', where over 25,000 precious wines are stored. Alternatively, participate in an active hike through vineyards to the historical Niederwalddenkmal Monument. **Meals: B, L, D**
EmeraldPLUS: Wine visit and tasting at Schloss Johannisberg
EmeraldACTIVE: Active hike to Niederwalddenkmal Monument

DAY 7 Cochem: Enjoy the enchanting town of Cochem during a guided tour of its well-preserved sites. Stroll through the quaint alleyways and see the remains of the historic town wall with its old fortifications alongside the town hall and its many other gems. **Meals: B, L, D**
EmeraldACTIVE: Cycling along the Moselle

DAY 8 Bernkastel: Dating back to 3000 BC, Bernkastel is situated along the banks of the Moselle River and is home to well-preserved buildings dating back to 1416. Enjoy a guided walking tour, where you will have the opportunity to stroll through the medieval marketplace with its gabled timber-framed houses, castle ruins and town gate. Or, take part in an active hike to the Landshut Castle Ruins overlooking the Moselle. **Meals: B, L, D**
EmeraldACTIVE: Active hike to Landshut Castle Ruins



Visit the iconic Kinderdijk Windmills

DAY 9 Koblenz: Wonderfully maintained inside and out, Marksburg Castle boasts a selection of typical interiors including the castle kitchen, the knight's hall, the armoury and an inviting wine cellar. The attractive light-stoned walls of the castle are protected by an outer fortress. With a single tower peering over the turrets and castle walls, it resembles something you would find in a Brothers Grimm tale.

Meals: B, L, D

EmeraldACTIVE: Hike to Marksburg Castle

DAY 10 Nijmegen, the Netherlands: Today you will visit the Kinderdijk Windmills, a UNESCO World Heritage site. This unique collection of nineteen authentic 18th-century windmills is considered a Dutch icon across the globe. **Meals: B, L, D**

DAY 11 Utrecht: As part of your EmeraldPLUS program, start the day by exploring a canal cruise through the Oudegracht or Old Canal. Not only is this the oldest in Utrecht but it is also older than the canals in Amsterdam. For centuries, along the water the wealthiest have built their mansions with the peculiarity of having warehouses and service entrances just above water level. Undoubtedly, the castle of Oudaen stands out among all the rest: an urban castle preserved despite being more than eight centuries old. **Meals: B, L, D**

EmeraldACTIVE: Guided bike tour near Utrecht

EmeraldPLUS: Canal cruise and cheese tasting

DAY 12 Amsterdam / USA: After breakfast, it's time to say farewell to your fellow guests and disembark the ship for your transfer to the airport, taking with you memories of all the beautiful destinations visited. **Meal: B**

Itinerary is subject to change.



Exceptional Inclusions

- **29 Meals:** 10 breakfasts, 9 lunches and 10 dinners
- **Airport transfers** on tour dates when air is provided by Mayflower Cruises & Tours
- Visit **three countries**
- **Ten-nights in a suite or stateroom** of your choice onboard the vessel
- **First-class service** by an English-speaking crew
- **Onboard Activity Manager** will support all EmeraldACTIVE excursions and host daily onboard wellness activities, games, classes and evening entertainment
- **All gratuities included**
- **Shore excursions** with English-speaking local guides
- Visit **UNESCO World Heritage Sites**
- Personal **listening device** for shore excursions
- **All meals included** onboard
- Variety of **international cuisine**
- Complimentary **regional wines, beer and soft drinks** with onboard lunches and dinners
- Complimentary **bottled water** in your stateroom
- Complimentary **WiFi** onboard
- Complimentary **bicycles onboard** for use ashore
- **All port charges included**

Hometown airport transfers will be priced close to the trip date.

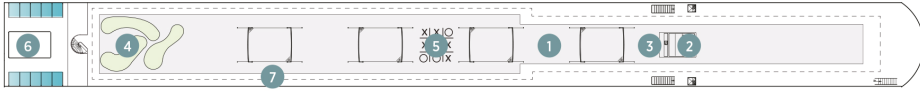
CRUISE ACCOMMODATIONS

Days 2 through 11 – Aboard an Emerald Cruises Star-Ship
Post-cruise hotel stays available in Amsterdam. Call for details.

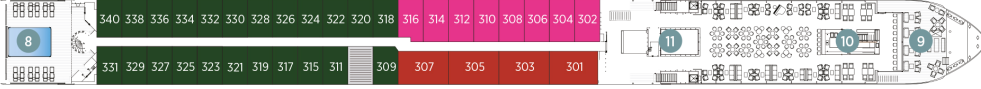
Emerald Cruises Star-Ships

Built: 2014-20 **Speed:** 15.5 mph **Staterooms:** 19 **Suites:** 72 **Length:** 443 ft. **Crew:** 47

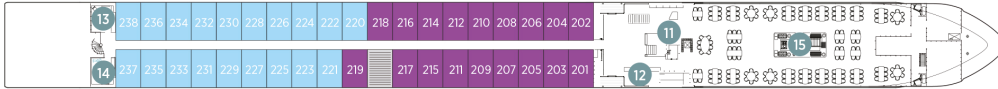
SUN DECK



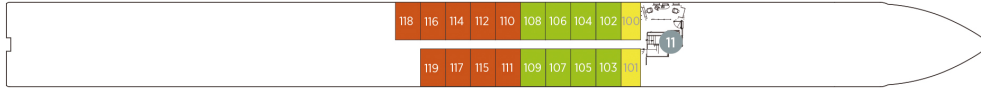
HORIZON DECK



VISTA DECK

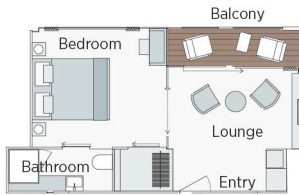


RIVIERA DECK



Public Areas and Ship Amenities

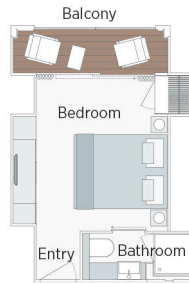
- 1 Sun Deck with Deck Chairs
- 2 Navigation Bridge
- 3 Sky Barbeque
- 4 Golf Putting Green
- 5 Games Area
- 6 Retractable Glass Roof
- 7 Walking Track
- 8 Daytime Pool / Evening Cinema
- 9 The Terrace
- 10 Horizon Bar and Lounge
- 11 Elevator
- 12 Reception
- 13 Wellness Area
- 14 Fitness Area
- 15 Reflections Restaurant



Owner's One-Bedroom Suite

315ft²

CAT SA



Grand Balcony Suite

210ft²

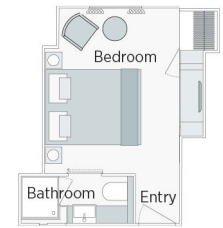
CAT S



Panorama Balcony Suite

180ft²

CAT A CAT B CAT C



Emerald Stateroom

162ft²

CAT D CAT E

2024 Departure Dates Rhine Castles & Moselle Vineyards

CAT	STATEROOM / SUITE	DECK
E	Emerald Stateroom	Riviera
D	Emerald Stateroom	Riviera
C	Panorama Balcony Suite	Vista
B	Panorama Balcony Suite	Vista
A	Panorama Balcony Suite	Horizon
S	Grand Balcony Suite	Horizon
SA	Owner's One-Bedroom Suite	Horizon

		SEP 7		
		PER PERSON TWIN		SINGLE ROOM ADD
		FULL FARE	SPECIAL FARE	
E	Emerald Stateroom	\$5895	\$4,716	+\$4,716
D	Emerald Stateroom	\$6395	\$5,116	+\$5,116
C	Panorama Balcony Suite	\$7395	\$5,916	+\$5,916
B	Panorama Balcony Suite	\$7595	\$6,076	+\$6,076
A	Panorama Balcony Suite	\$7795	\$6,236	+\$6,236
S	Grand Balcony Suite	\$8845	\$7,076	N/A
SA	Owner's One-Bedroom Suite	\$10095	\$8,076	N/A

FREE AIRFARE from anywhere in the contiguous United States. Call for details.

Air schedules from your city to Zurich, Switzerland, returning from Amsterdam, the Netherlands, will be available closer to departure.

Travelers Protection Plan (TPP) for River Cruises: \$499 up to \$5000 / \$569 \$5001 and up
This nonrefundable fee will provide a refund to you during the instance that you have to cancel your trip. The cancellation has to be for a covered reason (see Plan for details on coverage) and we have to be notified at least one day prior to departure. If you must leave the tour early due to personal illness or the illness or death of an immediate family member, TPP will provide a refund for any unused services after the departure of the tour. Other benefits include medical expenses for illness and injury, emergency transportation, 24 hour hot line and lost or stolen baggage assistance. Return air transportation is included ONLY if your air tickets are purchased through Mayflower Cruises & Tours. Please review the Plan for details on coverage. Should you choose not to purchase our TPP, the following per person cancellation charges will be assessed for all tours and optional excursion costs:

- 91 days or more prior to departure: Deposit amount
- 90 days to day of departure: 100% of total tour
- No refund on unused portions of the tour



Exclusions: Mayflower Cruises & Tours reserves the right to alter its Refund and Cancellation Policy when a substantial amount of cancellation or postponement of travel is attributable to: conditions resulting from an act of God, natural or man-made disaster, fire, government action, civil disorder, war, hostilities between nations, or unavailability of transportation through no fault of Mayflower Cruises & Tours. Plan and benefits offered and administered by Trip Mate, Inc.

FOR RESERVATIONS OR INFORMATION CONTACT:

C and Bea Tours & Cruises

185 Marlton Road
Pilesgrove NJ 08098

856-769-2816
mason@candbeatours.com

