



# THE EDWARD LENTSCH COLLECTION

A Snapshot in Time 2026

copyright 2026 Edward Lentsch all rights reserved





*Lentsch's work has the pathos of Rembrandt, and the atmosphere of Kiefer.*

Tonya Turner

Turner Carroll Gallery Santa Fe, NM

“I cannot make a mistake in identifying works of consequence...

Edward Lentsch...it's bold it's innovative it's impeccably well made!”

Legendary Art Dealer Ivan Karp

EDWARD LENTSCH

American born April 14, 1959 California

Working in mixed media on canvas, Lentsch's monumental sized works exhibit unique surfaces and refined textures while also reflecting a contemplative element of alchemy and spiritual introspection.

The spiritual overtones of Lentsch's painting are captured by his titles, where he uses mystical images and esoteric subjects to inspire the imagination of his viewer. His titles are compelling as he reaches for what he refers to as a “dialog that defines synectics...” (a concept first coined by Buckminster Fuller --20th century visionary inventor.)

Wikipedia contributor William Gordon describes synectics as: a problem solving approach that stimulates thought processes of which the subject is generally unaware. He describes this method as, “Trusting things that are alien, and alienating things that are trusted.” In Lentsch's work he often pairs paintings with titles that attempt to explain this idea of synectic reason by connecting a vast matrix of complex relationships between science and mysticism and the metaphysical and spiritual.

*“My work is about human potential and consciousness. My passion for painting is intertwined with a passion for science and learning; logic and mathematics, mysticism and mastery.”*

EDWARD LENTSCH

APRIL 2015





## Professional Profile

Edward Lentsch's expansive artistic practice explores his relationship between the self, nature and the universe. From the Fibonacci sequence to the teachings of Aristotle, Lentsch attempts to create a bridge between the natural world and these intellectual canons, exploring the interconnection between the realms of science and mysticism, the metaphysical and the spiritual. He explores how these three facets are integrated within a global environment and moreover how we, as humans, fit within this complex matrix of thought using the ideas of some of the world's greatest writers and scholars.

Lentsch works across a variety of media to create an 'energy of intention', in which textures, compositions and colours (or their absence) are combined. At first glance, his abstract canvases bring to mind the earthen tones of Kiefer, or the scratched surfaces of Tàpies. Lentsch, however, draws from a broader art historical canon, and painting becomes an extension of the life force around him, a transformative experience through which he can mediate a pure experiential moment. Flowing from a nonverbal intuitive state of creative expression, Lentsch bridges a complex visual language in which colours and textures are lifted from the natural world. On canvas, they are refracted and tessellated, at times put through the process of entropy, which allows for them to be transformed and transmuted.

Lentsch starts with a mastic and polymer foundation, before working with stone powders and dry pigments. Here, while the work is still wet, he uses trowels and sticks creating visual interventions. Before encapsulating the work in shellac and various varnishes, each work's effervescence is enhanced and its distressed surface is developed. Works take on qualities of organic surfaces, such as sandstone or granite, using an intricate network of flecks and dots of pigment to proliferate the densely worked surface. One can imagine soft, snowy landscapes of white and grey or the verdant green of a tranquil overgrown pond or even the harsh dark lines of barren twigs

and brush against an autumn landscape. Lentsch's technique allows for the translation of our natural landscapes into abstract environments.

It is the complex relationship between what is known, or the skill and technique, and what is manifested, the interpretation or intuition, that lies at the heart of Lentsch's painterly technique. He uses the force of the paint as it is applied to the canvas as a sensory way to connect with the energy of the life force around him.

Lentsch's paintings also use logic existing within nature; for example, the number sequences that comprise the fractals of a snowflake. This ontological approach is spurred by the artist's interest in Synectics, a methodology that seeks to explore how creativity works by a connecting of dots to reach a higher plane of understanding that encompasses the physical, psychological and symbolic. In this way Lentsch explores links between elemental phenomena and more ethereal, spiritual and magical experiences.

Each of Lentsch's works refers to a particular theory or intellectual or spiritual manifesto. His titles are not intended to act as complete narratives for individual paintings, but rather to demonstrate their significance as a Theoretical foundation where each piece is connected to the other. His work becomes a series of links within a chain creating an intuitive dialogue between the conscious and subconscious. Just as his paintings make connections between the natural world and abstraction, it is the force of painting that helps him complete the circle. In diving into the canvas Lentsch understands his connection to the beauty and complexity of life that allow him to find freedom and personal empowerment.

LONDON 2014

WRITTEN BY Anna Wallace-Thompson  
GALLERIE KASHYA HILDEBRAND











Romance Sonambulo  
66x88 inches



Infinite Continuity  
46x76 inches





Lines on Ale  
46x46 inches



Veils of Perception  
54x76 inches





The Elantris  
76x46 inches



Consciousness in Motion  
46x46 inches





The Enneads of Plotinus  
70x100 inches



Newtons Law  
60x90 inches





The Path to Enchantment  
48x42 inches



Tranquility  
48x72 inches





Symphony of Light  
54x96 inches



The Silent Circle of Peace  
72x60 Inches





Raging Fire of the Sun  
66x43 Inches



Waves of Intuition  
76x46 inches





Petrarchan Sonnet  
70 x 100 Inches



Juniper  
55 Inches





Vincent  
40x32 Inches



The Chronicle of Kings  
25x25 Inches Each





The Stone of Perfection  
48x80 Inches



Large White Bird  
42x72 inches





The Mysterious Etruscans Part I & II  
60x48 Inches each



Legend of the Golden Dolphin  
60x50 Inches





Poet Paripatetic  
43x46 inches



Bouclou La Flambea  
50x80 inches





Logic  
40x40 inches



The Rhodora  
46x76 inches





The Blue Teal  
70x50 inches



Aristotle's Lyceum  
76x46 inches





Athena  
68x52 inches



Mystic Merylinita  
60x90 inches





Carnival of Colors  
72x76 inches each



Love and Hate  
76x46 inches





Opel Symbol of Hope  
42x42 inches



Uruka  
60x36 inches



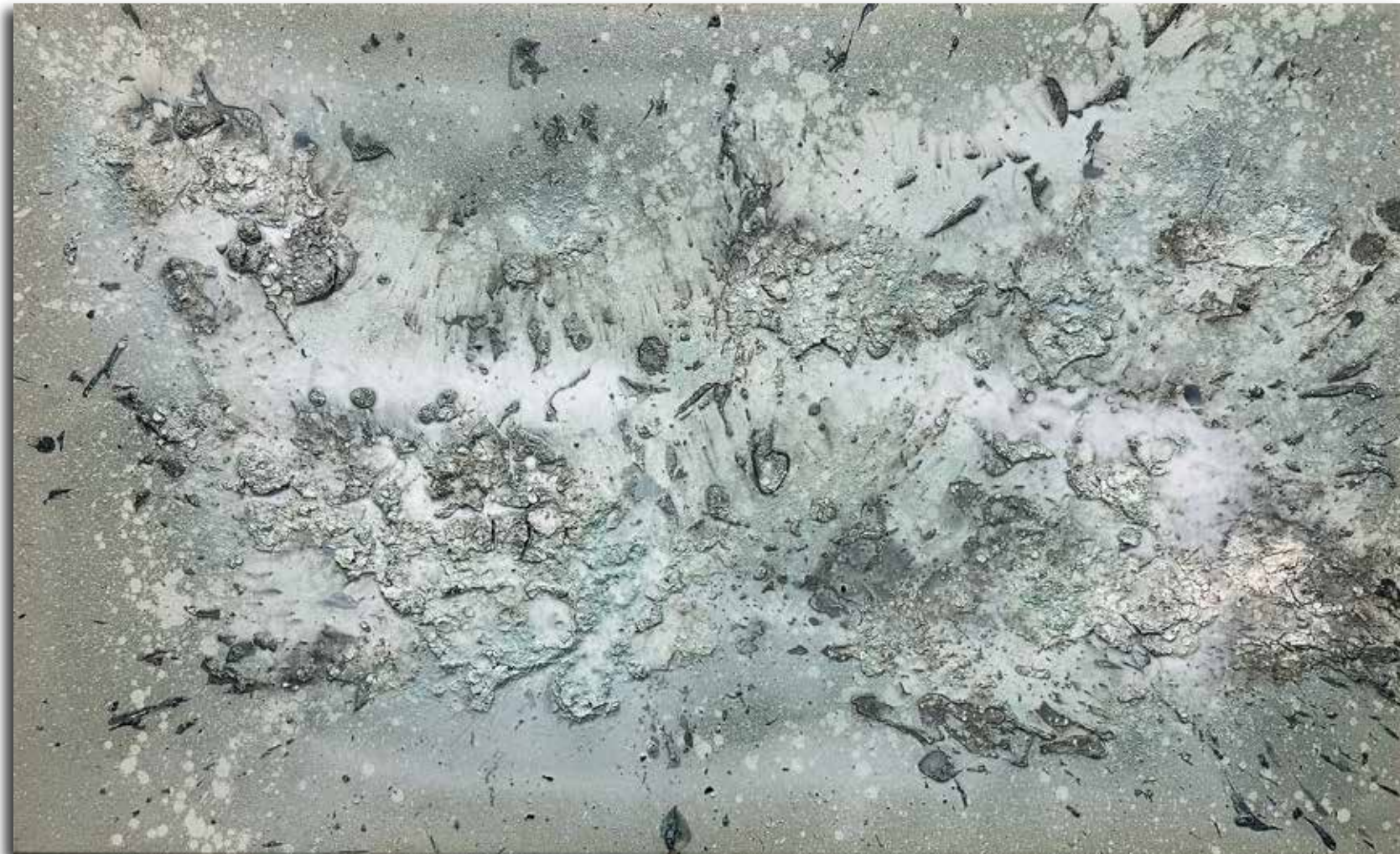


A Realm of Ideas  
42x70 inches



Roots of Reflection  
42x70 inches





The Journey Within  
46x76 inches



Seeds of Intention  
46x76 inches





Blue Teal Quill  
70x50 inches



Asclepius  
70x120 inches





The Azabache Sequence  
60x60 inches



The Zeigarnic Effect  
60x60 inches





Praesons de Conatu  
67x43 inches



The Art of Hope  
48x48 inches





Plumeria I  
43x43 inches



The Ancient Mariner  
50x80 inches





A Thousand Waves of Light  
50x90 inches



Horizons of Possibilities  
76x54 inches





ALabyrinth of Treasures  
59 inches framed



Babtistia Australis  
47 inches framed





Perpetual Optimism  
94x74 inches



Awakening the Minds Eye  
88x66 inches





The Paradigm of Consciousness  
80x60 inches



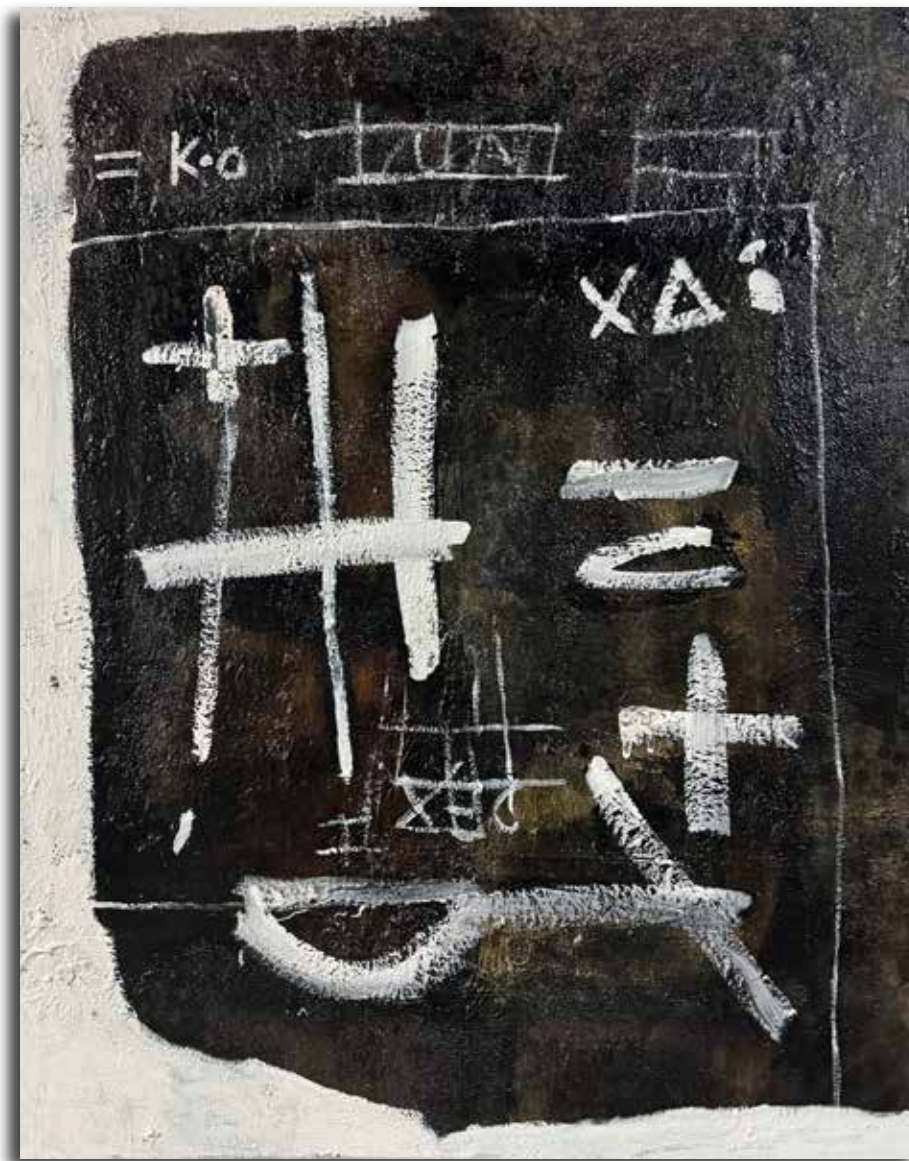
The Stillness of Time  
60x90 inches





The Wandering Paripatetic  
120x80 inches





The Primitive  
90x70 inches



The Divine Madness of Phaedrus  
60x90 inches





Game Theory  
108x72 inches



Invariance  
90x60 inches



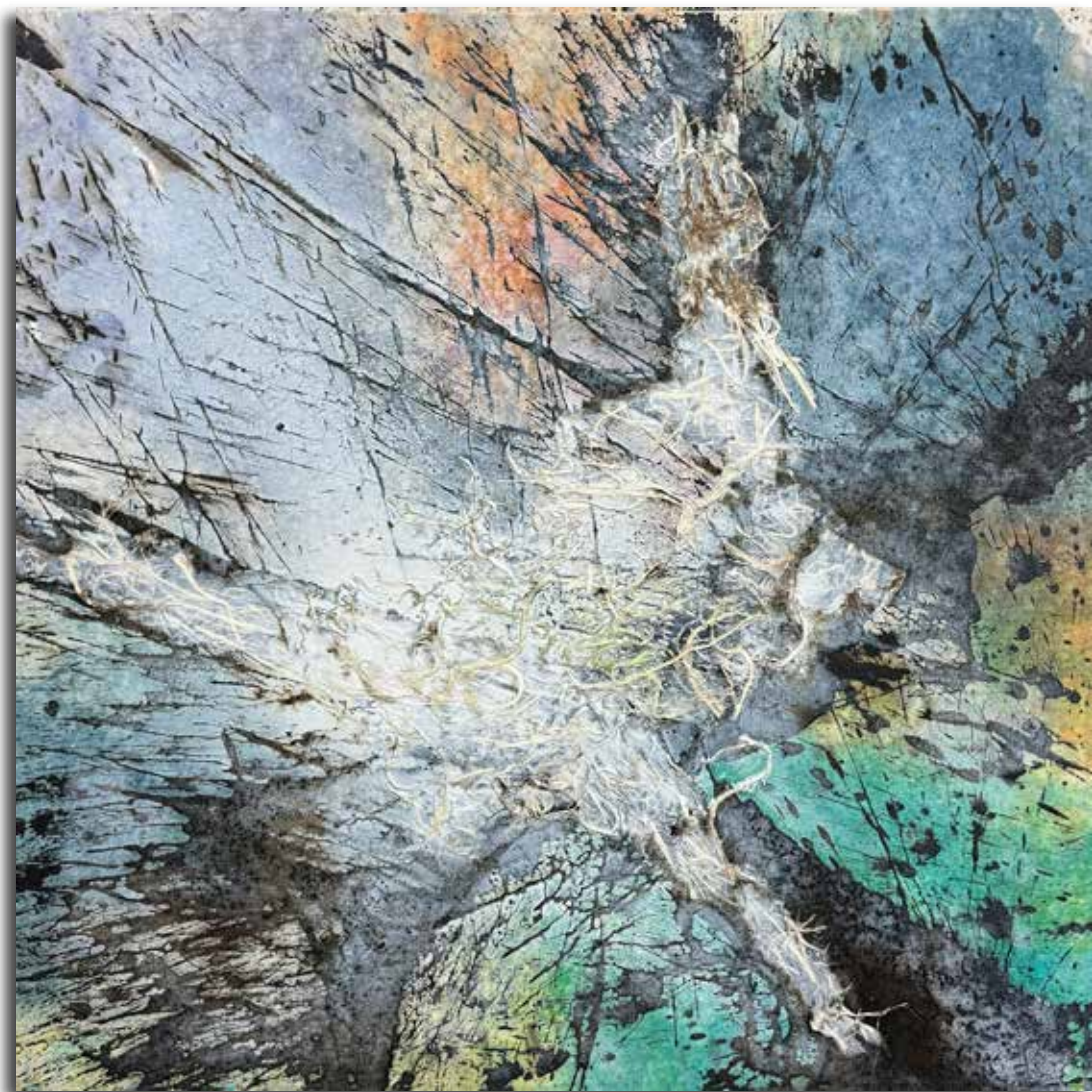


Mr Q  
59 inches framed

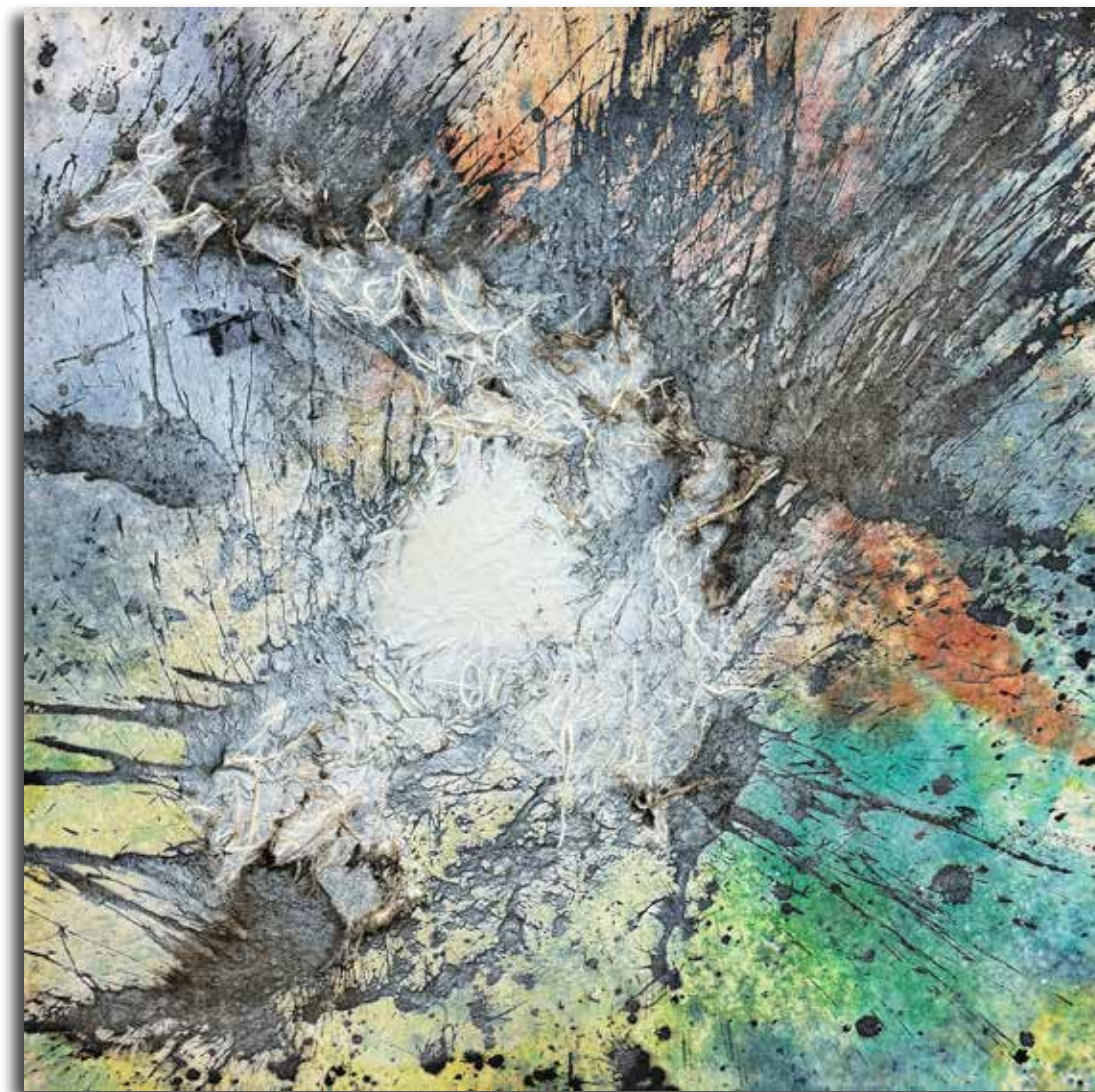


Clarity Through the Fog  
70x50 inches





The Joyful Butterfly  
50x50 inches



Lasting Light  
50x50 inches





K is Zero  
58x46 inches



Roots of Reflection  
70x42 inches





Lemurian Caves  
80x56 inches





Celestial Cyclones  
50x55 inches



Whispers of the Mind  
70x50 inches





The Elements of Perspective  
60x90 Inches



Harmony  
46x76 inches





The Butterfly Effect Part I  
50x50 Inches



The Butterfly Effect Part II  
50x50 Inches





A Symphony of Stillness  
50x55 inches



The Phenomenon  
48x72 inches





Eleusias  
46x76 inches



Lyapunov Exponents  
50x50 inches





Through the Lens of Entropy II Shannon  
60x42 inches



The Language of Snowflakes  
50x50 inches





Transcendentalism / For Whitman  
60x9- inches



Purple Paris  
60x90 inches





Castor and Pollux  
46x34 inches each

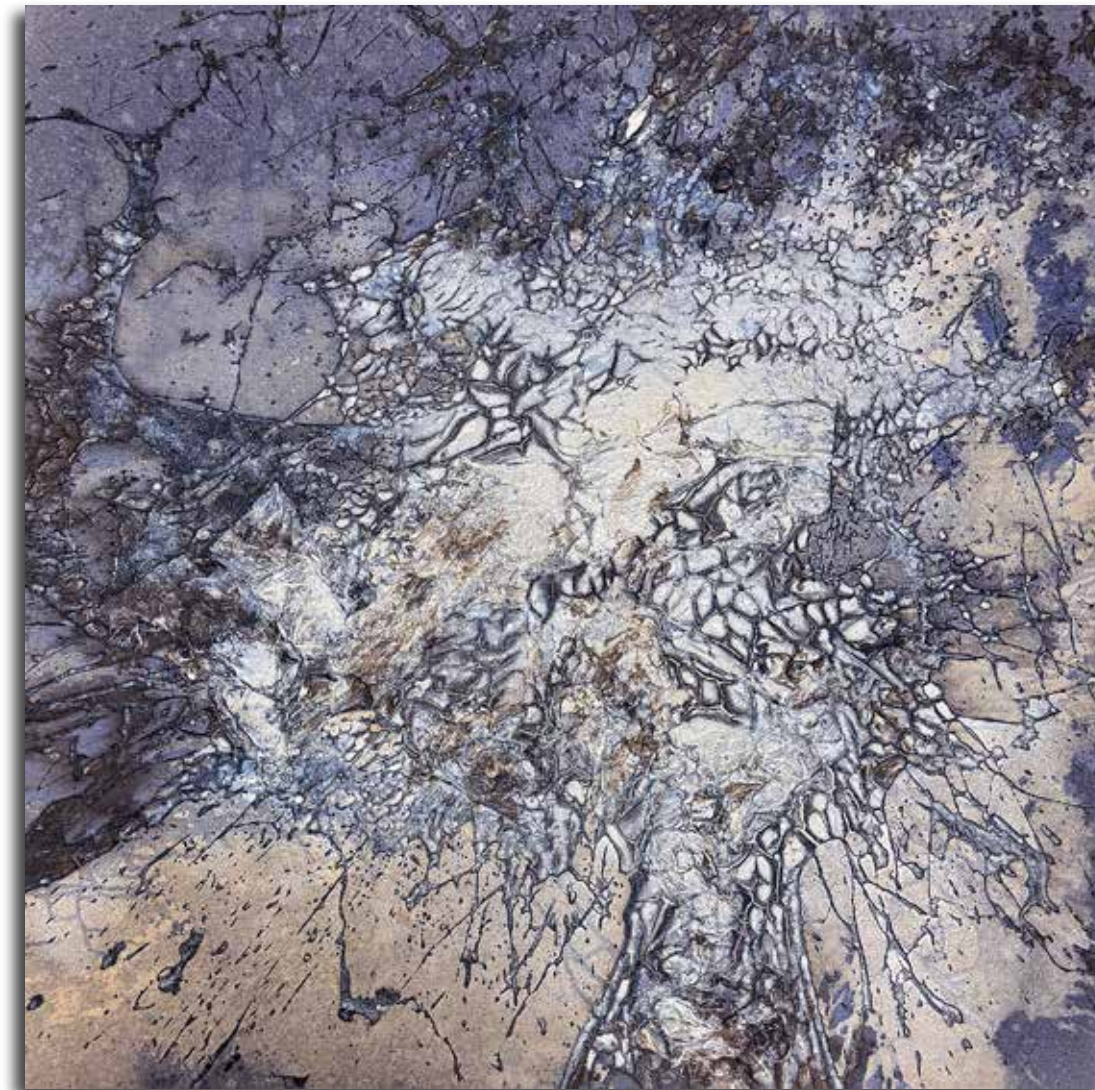


Anadolu Tales  
48x72 inches





Strange Attractors Part I  
46x46 inches



Strange Attractors Part II  
46x46 inches





Forty-Eight Seconds of Momentum  
90x60 inches



Concert  
60x60 inches





Reality Shines Resplendent  
90x60 inches



Homeric Bards  
70x100 inches





The Enchantment of the Blue Lotus  
60x90 inches



Ottava Rima  
72x58 Inches





Gaze Long and Distant  
60x90 Inches



Empedocles Theory  
76x54 Inches





Eurika Moment  
76x54 Inches



Oz  
90x60 Inches





Dreamcatcher's Logic  
70x50 inches



Tales from the Silk Road  
46x76 Inches





Prestige  
88x66 inches



The Nine of Cups  
60x42 Inches





Apeiron Objective  
72x60 Inches



Gracias a Dios  
70x50 Inches





Azabache Tablet  
58x38 Inches



Mykonos  
55 Inches Framed





All I See is Light  
88x66 Inches



The Major Arcana  
88x66 Inches



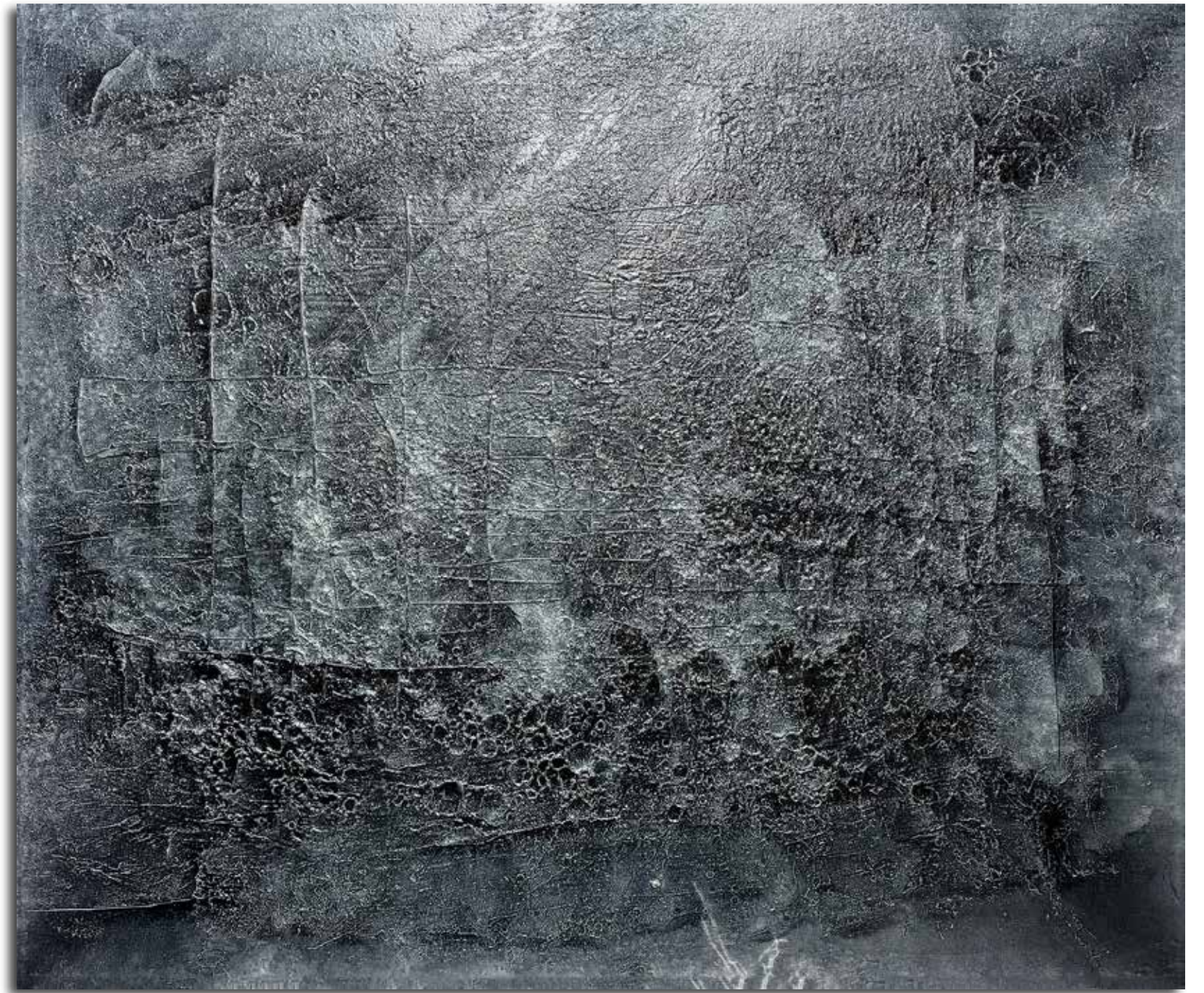


Galileo's Discovery  
100x150 Inches





Precision  
94x88 Inches



Resurrection of Coltran  
86x102 inches





Hemegela Syntaxis 2014  
80x120 inches



Liquid Imagination  
70x120 inches







The Eye of Horus  
86x120 inches



Blue Magna  
80x104 inches



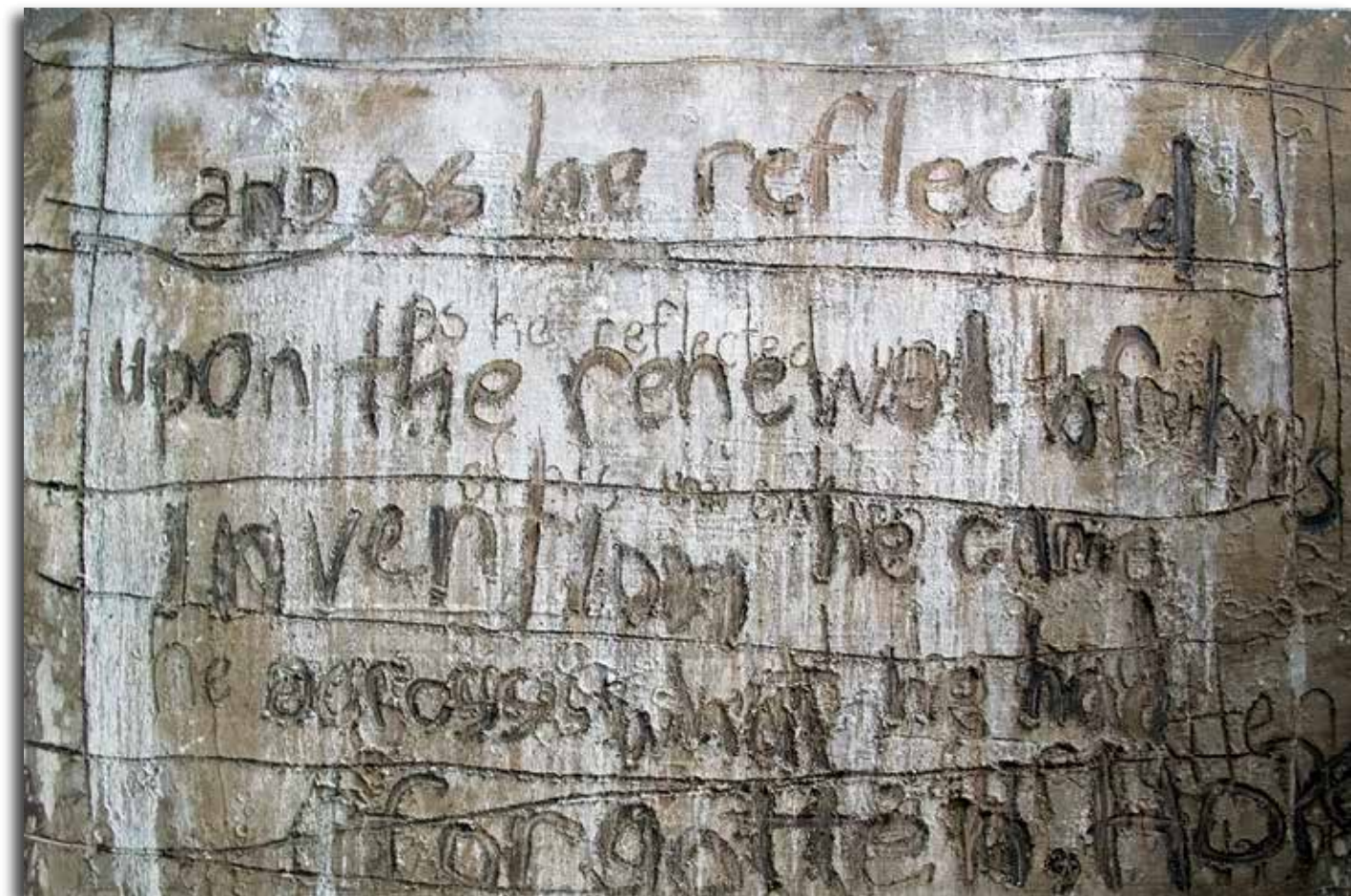


Idea of the Century  
80x60 inches



Carpe Noct  
66x56 inches





Amsterdam  
48x74 inches



The Secret Lies in Google  
55x46 inches





Blue Galileo  
75x100 inches



Handmaid Miracles  
100x80 inches





The Intention Experiment  
100x80 inches



Singularity  
99x77 inches





Lady Liberty  
100x80 inches

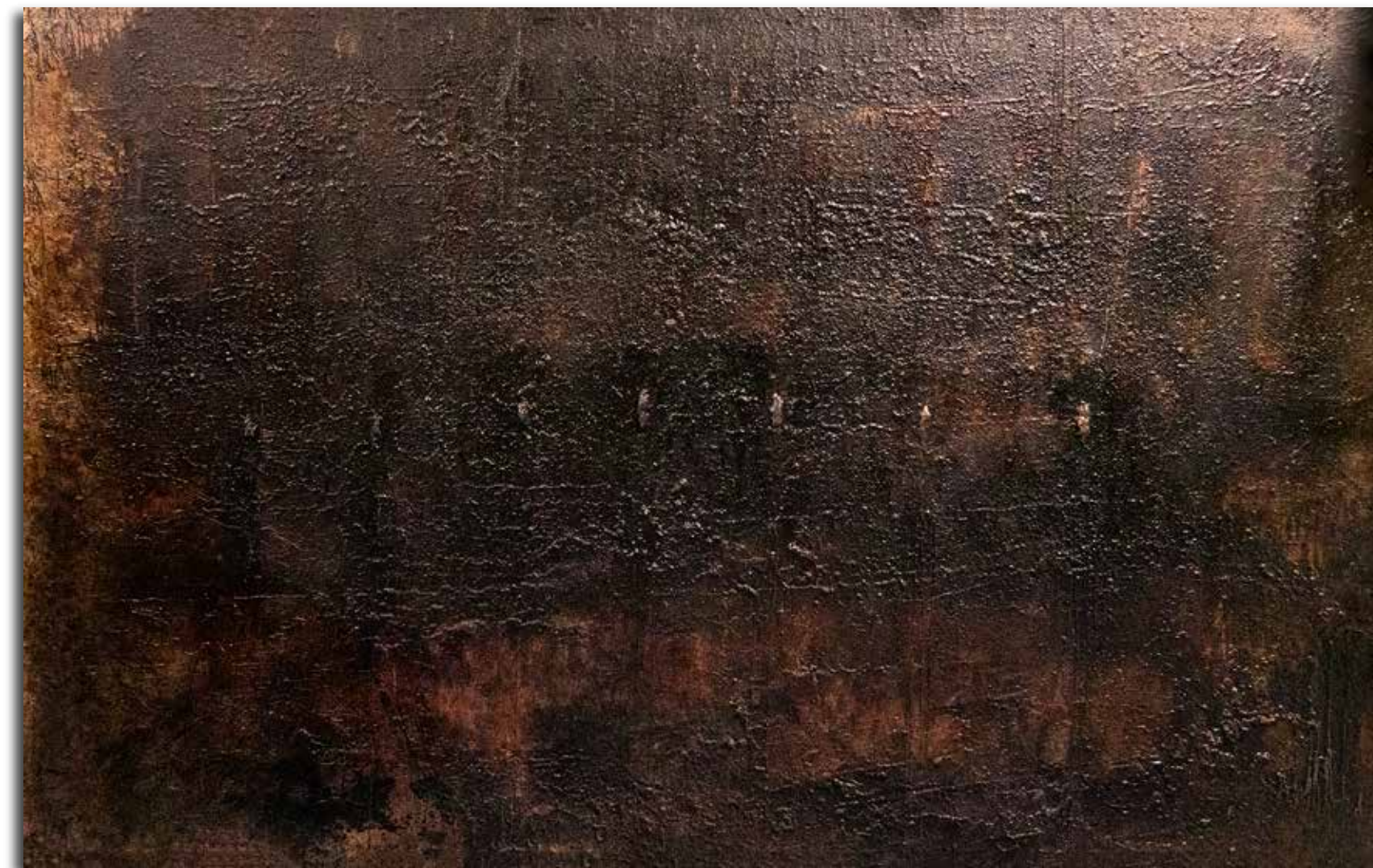


Waterstone of the Wise  
76x54 inches





Reaching to the Other Side  
80x60 inches



The Seven Horsemen  
84x132 inches





The Golden Egg  
99x77 inches



Patina Babtsite Azul  
100x80 inches



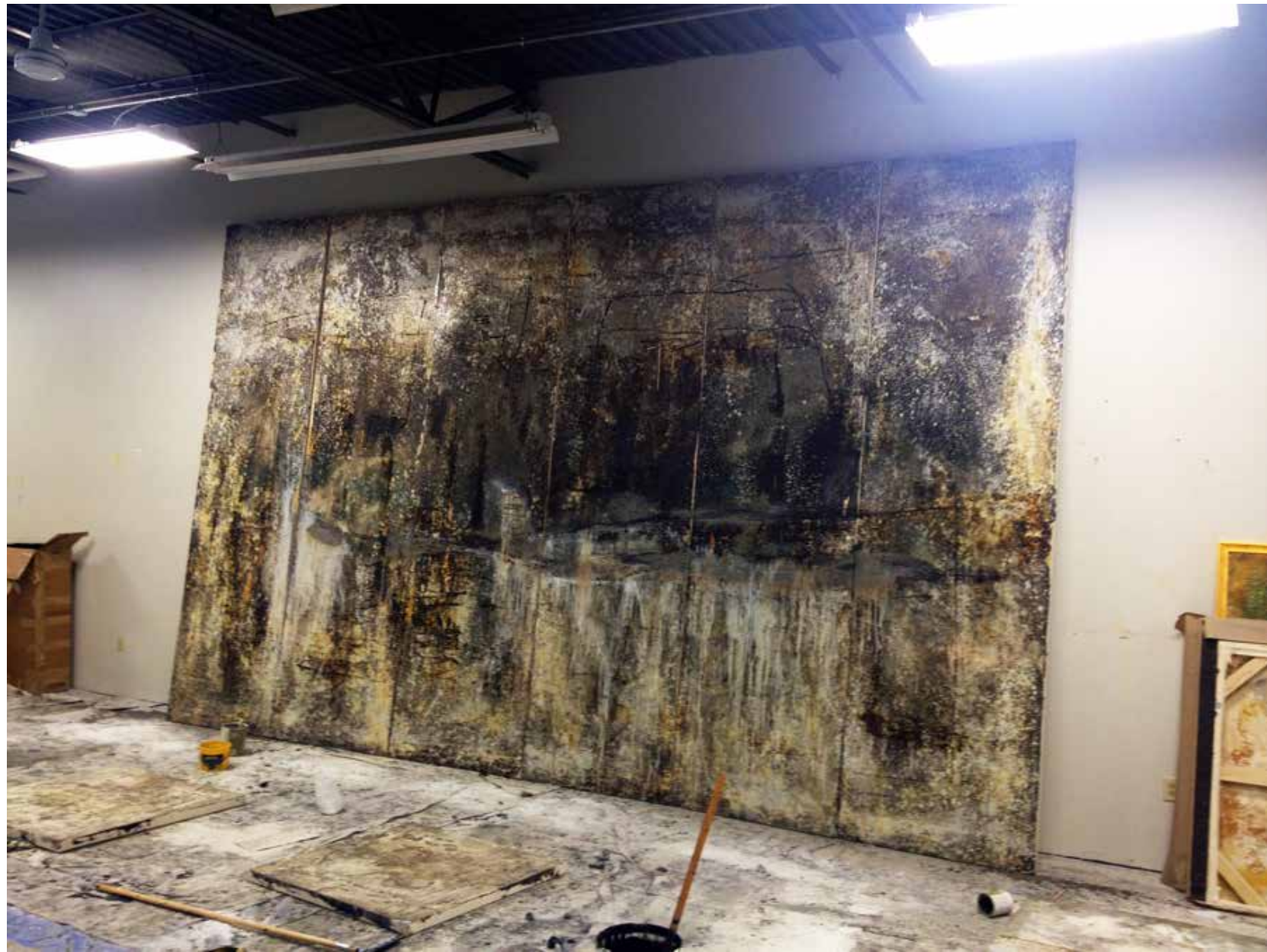


Vestigia Nulla Retrorsum  
80x100 inches



Still as a Mountain  
100x80 inches





The 65th Hexagram  
156x252 inches



Reincarnation  
90x68 inches





Dancing With Cranes  
69x59 inches



Liber Abacci  
60x50 inches





The Instance within a Second  
120x80 inches



The Sephora  
100x80 inches





The Receptive  
66x56 inches



The Code  
66x55 inches





Destruction of Gibraltar  
88x66 inches



Poet Paripatetic  
43x46 inches





Eponymous  
76x54 inches



Acta Non Verba I and II  
60x42 inches each





The Quiet Space  
50x80 inches



Metaphysica  
90x60 inches





Ancient Tablet of Lagash  
72x48 inches



Ajanta  
45x36 inches each





Socratic Dilemma  
76x54 inches

# LONDON INVENTORY





Crystal Completeness 2019  
96x147 cm



Imago Exegitica 2014  
140x115 cm





The Raven Maestro 2014  
147x97 cm



Castles in the Sky 2018  
106 cm





Armetrine 2015  
116x177 cm

The Lucas Series 2015  
140 x115 cm







Eleusinian Mysteries Part I  
106x106 cm

Amxagorus  
152x127 cm





GALILEO'S PENDULUM  
100 × 150 IN







LAYLA AND MAJNUN  
96X73 IN



RAMA'S BRIDGE  
68X108 IN





THE HOVERING SKY  
60X90 IN



THE EMERALD TABLET  
80X60 IN





SEMPER AD MELIORA  
88X66 IN



CELLULAR REJUVINATION PART I  
88X66 IN



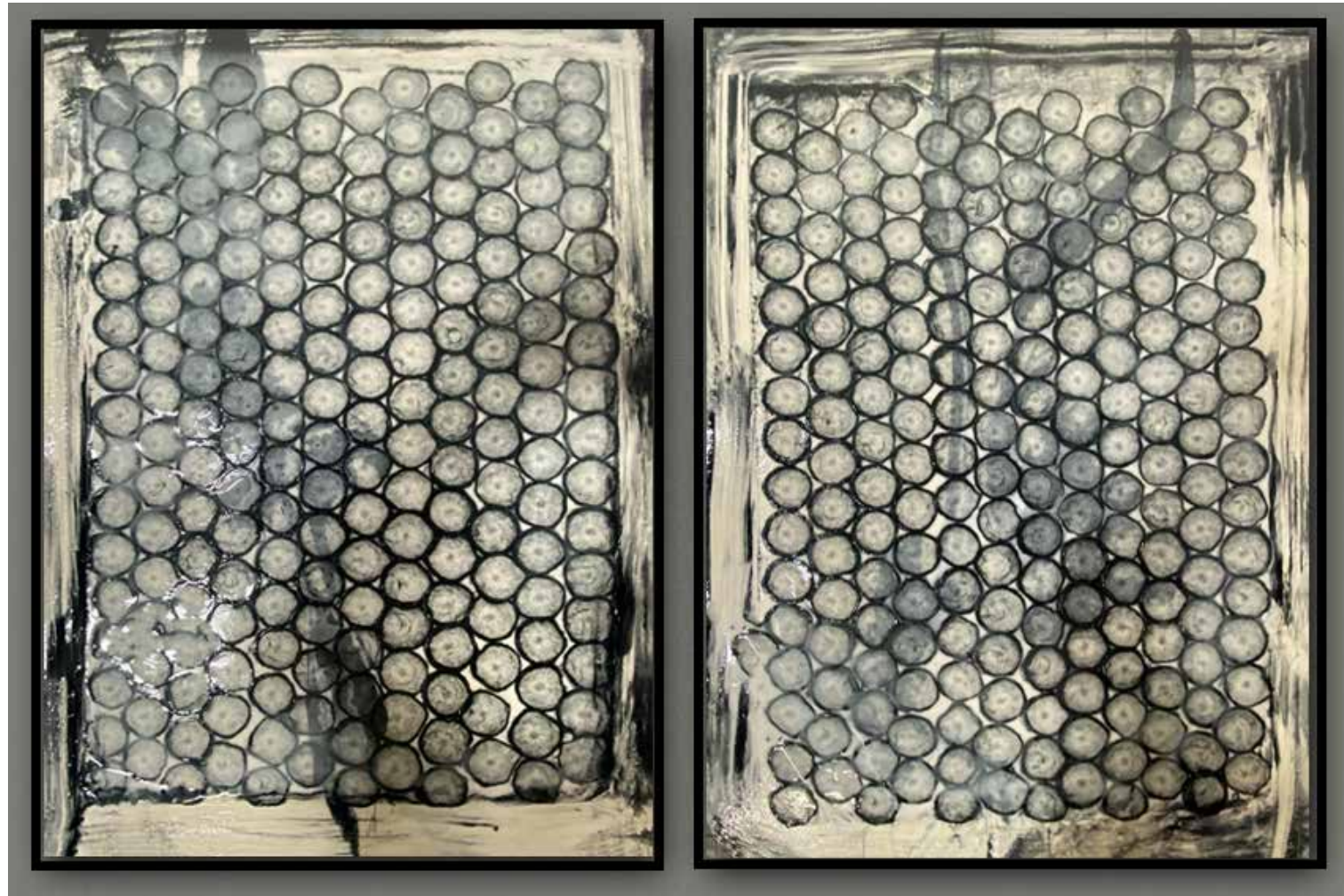


THE SCRIBE  
88X48 IN

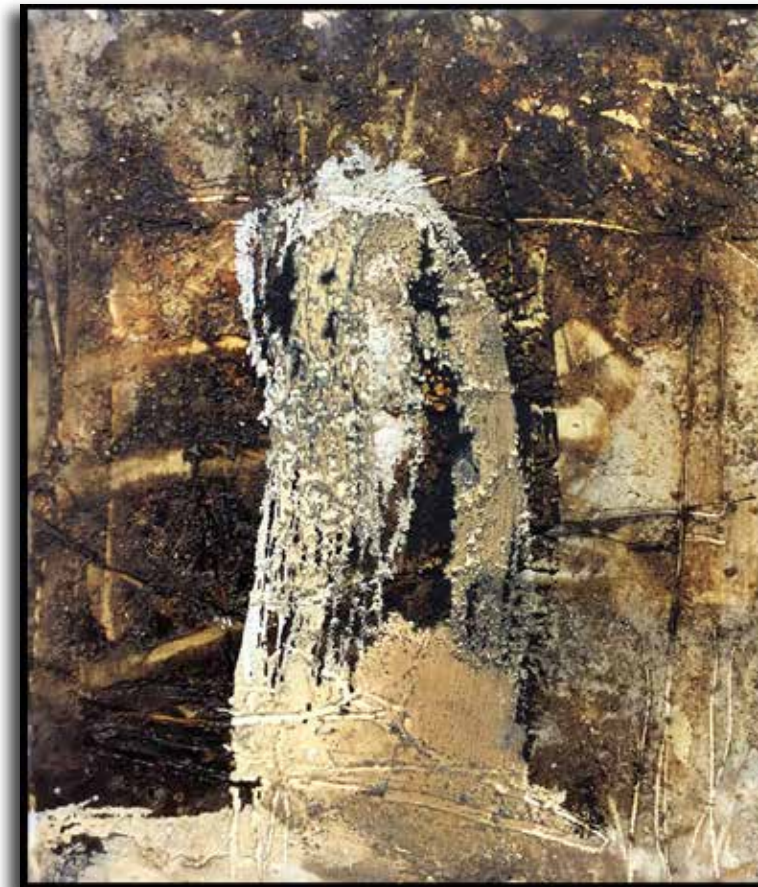


THE GOLDEN ARROW  
90X60 IN





HONEYCOMB SUITE  
43X35 IN EACH



KNOW YOUR STAR  
35X30 IN



PUNCTILICIOUS  
35X30 IN





MIRACLE OF WATERMELON  
55X40 IN



FORBIDDEN TRANSFORMATIONS  
72X43 IN





IDEA OF THE CENTURY  
80X60 IN



MAGUS AND THE FOOL  
80X100 IN









Grizzled Skipper  
46 Inches Framed