

NTD 7.5,10,14

NO-TILL DRILL



US Ag
Manufacturing
Owner's Manual

Your Product

MODEL:

SERIAL #:

DATE PURCHASED:

DEALER:

DEALER LOCATION:

DEALER PHONE #:

Table Of Contents

Welcome Message

Operating Tips

Safety Suggestions

General Maintenance

Drill Settings

Parts List & Assembly Diagrams

Seed Charts

About Us

Vision & Mission

Our Product Lines

Contact Us

American-Made, **American-Tough**

Welcome to the US Ag Manufacturing family, where strength, durability, and American craftsmanship converge to redefine your agricultural experience. As the proud purveyors of our agricultural lines, we stand committed to delivering solutions that embody the spirit of hardworking farmers and ranchers across the nation.

At US Ag Manufacturing, our ethos is encapsulated in our slogan, "American-Made, American-Tough." Every weld, every design, and every innovation is a testament to our unwavering dedication to providing you with equipment that not only meets but exceeds your expectations. As you embark on your journey with our products, rest assured that you are backed by a legacy of excellence, where each piece of machinery is a reflection of our passion for agriculture and the enduring strength of the American spirit.

Thank you for choosing US Ag Manufacturing. We look forward to being an integral part of your farming and ranching success.

Operating Tips

Drill is planting too deep

Lower guage wheels (if desired, decrease the furrow width).

Drill is planting too shallow

Raise guage wheels and/or increse your furrow length.

Drive Wheel is not turning

Lower your guage wheels to make contact with the ground. If the wheels are in the air, the drive chain will not turn.

Chains are running off (dropped chain)

Check the Pivot Bolt on the Drive Wheel. This may be loose resulting in the chain not maintaining contact.

Gangs penetrating at different depths

Adjust your third (top) link to level your drill.

Safety Suggestions

1.

Keep hands and clothing away from chains and sprockets while drill is in operation

2.

Never ride or allow others to ride on the drill when it is in motion.

3.

Only use the walkboard for loading the hopper.

4.

Leave the drill in the lowered position when not in use.

5.

Travel in a low speed when transporting or using the drill on rough or uneven ground.

6.

Do not turn the drive unit by hand to check the seeders.

7.

Do not attempt to pull any foreign objects or materials from any part or mechanism of the drill while it is operating or in motion.

8.

Do not begin operating the drill until you have checked that everyone or everything is clear of the machine and that no tools or objects are lying on or in the drill.

9.

Always replace all safety shields before operating the drill.

10.

Always place safety stands under the drill when working on or adjusting the the drill in the raised position.

11.

Keep babies and small children, loose clothing items, long hair, and/or jewelry away from the machine when it is in operation.

12.

Do not allow pets anywhere near or on the machine when the machine is operating or is stored.

13.

Do not operate the machine on extreme inclines.

14.

Check all hydraulic lines prior to use for cracking, breaks, or wear.

15.

Make sure harrow is secured to the transport rack before moving.

General Maintenance

Prior to Initial Use -

The operator should lubricate all grease fittings on all foot pieces of the drill. The drive chains should also be checked for proper adjustments.

After 1-2 Hour Break-In Period

The operator should tighten all bolts (make sure to not overtighten the angle strap bolts), recheck the drive chains for tightness, and lubricate all grease fittings. The operator should lubricate the grease fittings daily and perform all listed procedures periodically thereafter.

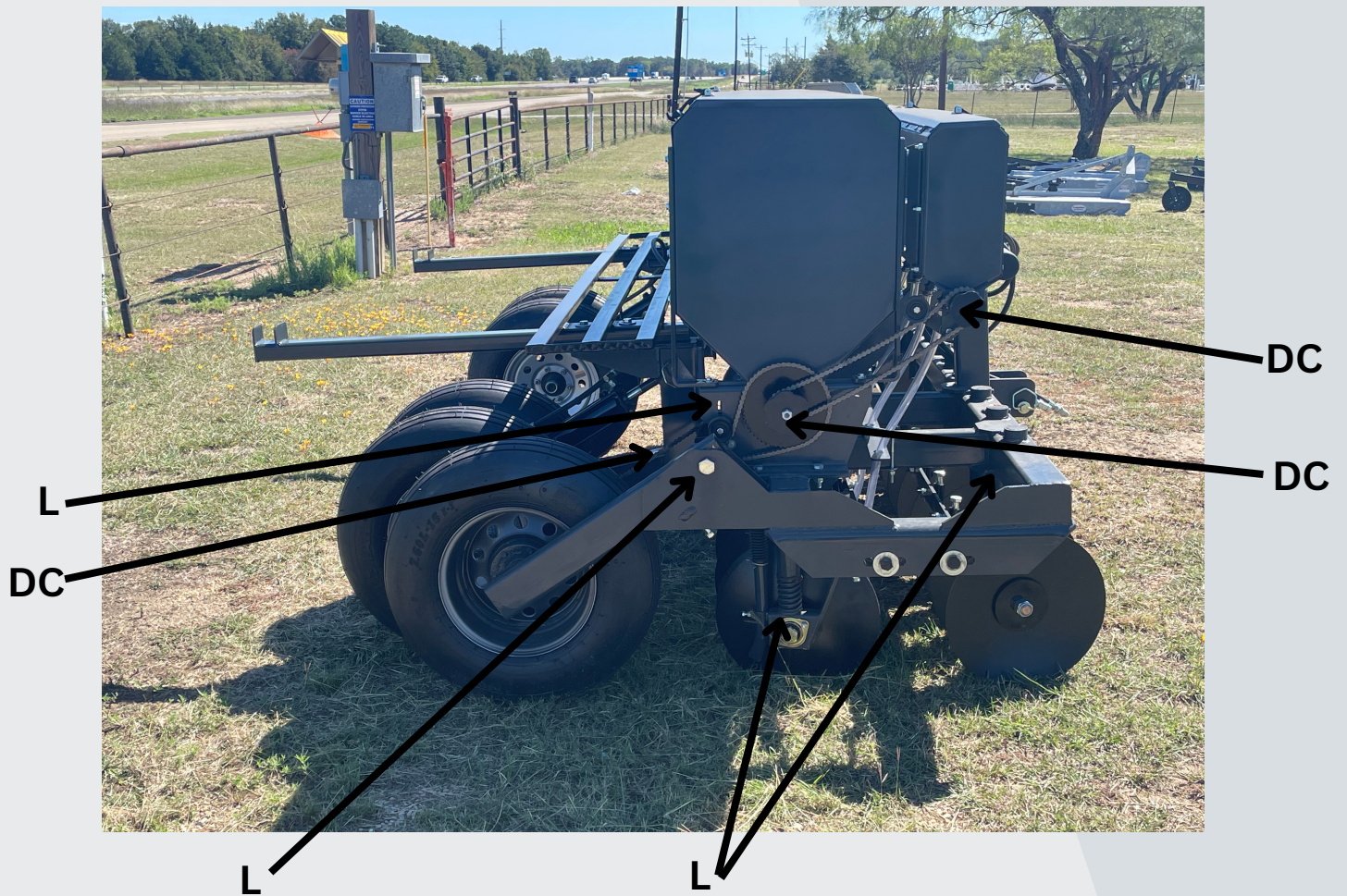
Wheel Bearings

The operator should inspect and repack wheel bearings at least once per year.

Seed Tubes & Boxes

The operator should inspect seed tubes for blockages such as spiders, insects (especially dirt daubers), or mud when stored for extended periods of time.

Only use clean seed that is free of stalks, rocks, and other foreign matter. Remove all seed and wash seed boxes prior to storage to prevent mold and degradation of the seed boxes.



L - Lubrication Points

DC - Drive Chain



Drill Settings

DRILL

Adjust the third (top) link to **level the drill**

Adjust the disc angle for desired **furrow width and depth**.

Set gauge wheels to **control depth**.

SEED BOX

Set the **seed flow adjustment** by referencing the attached seed chart.

Check that all seed tubes and clamps are in proper placement.

CONTROLLING FURROW WIDTH/DEPTH

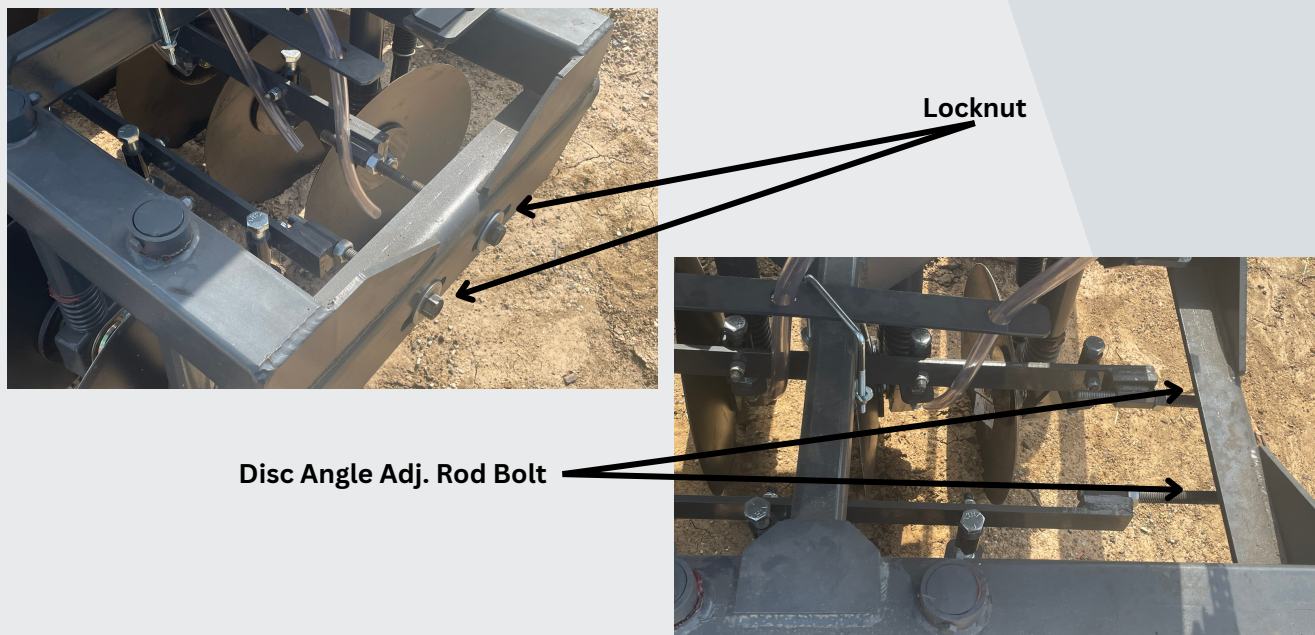
Planting depth is controlled by two separate adjustments - 1) gauge wheels and 2) disc angle. When both gangs of discs are set in a straight-line position, the narrowest furrow is obtained.

To **increase furrow depth and width**, raise gauge wheels and increase disc angle. To **increase furrow width, but not the depth**, increase disc angle and lower gauge wheels.

Settings will vary and are dependent on soil conditions. Maximum furrow width is 4 inches.

CHANGING THE DISC ANGLE

Disc angle is adjusted one gang at a time. Start by loosening the inside locknuts on each end of the disc adjusting rod. **To increase disc angle**, loosen the disc adjusting rod bolt on the left end of the disc gang. Change the disc angle by turning the rod adjustment on the right side clockwise. When required pitch is obtained, tighten the locknuts on both ends.



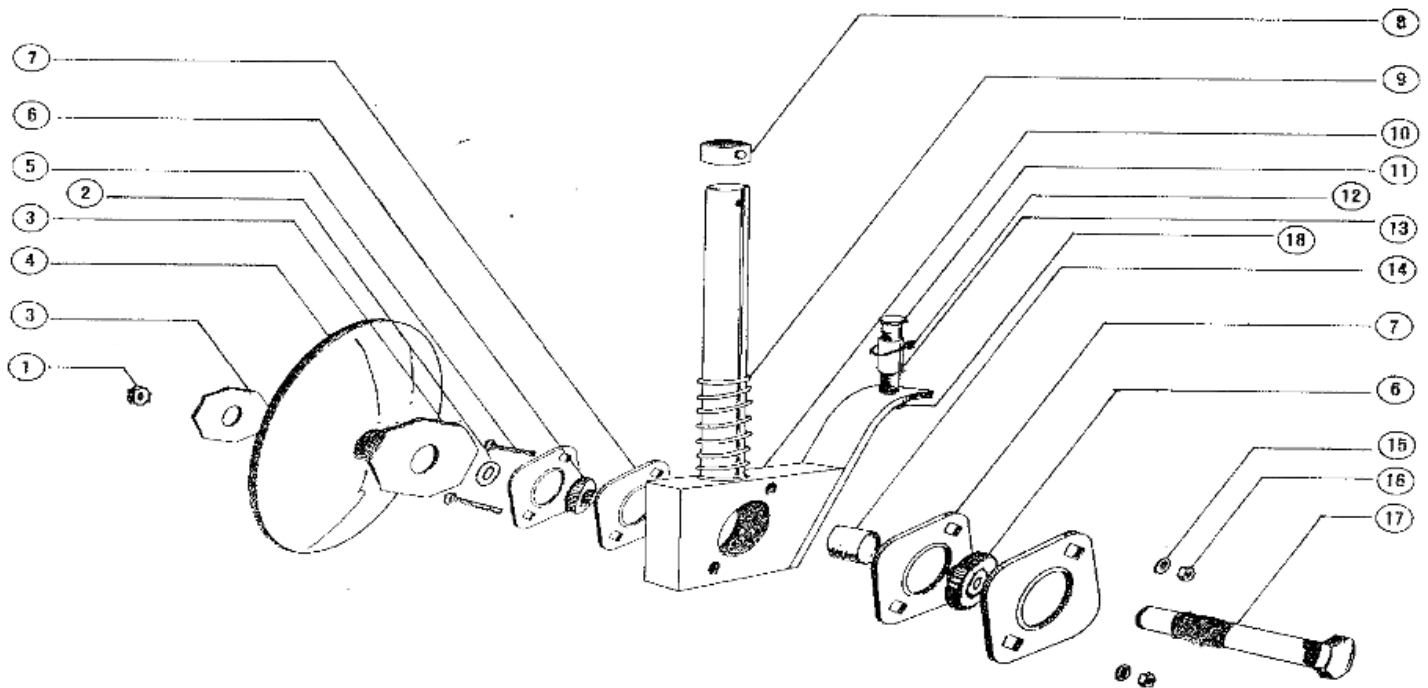
CHANGING THE DEPTH SETTING

Adjust the machine depth by rotating the adjusting collar on the right side ram until the desired depth is achieved. Then, operate the system and both rams will be the same elevation. **Rotating the collar clockwise** will set the unit to a **deeper depth setting**.



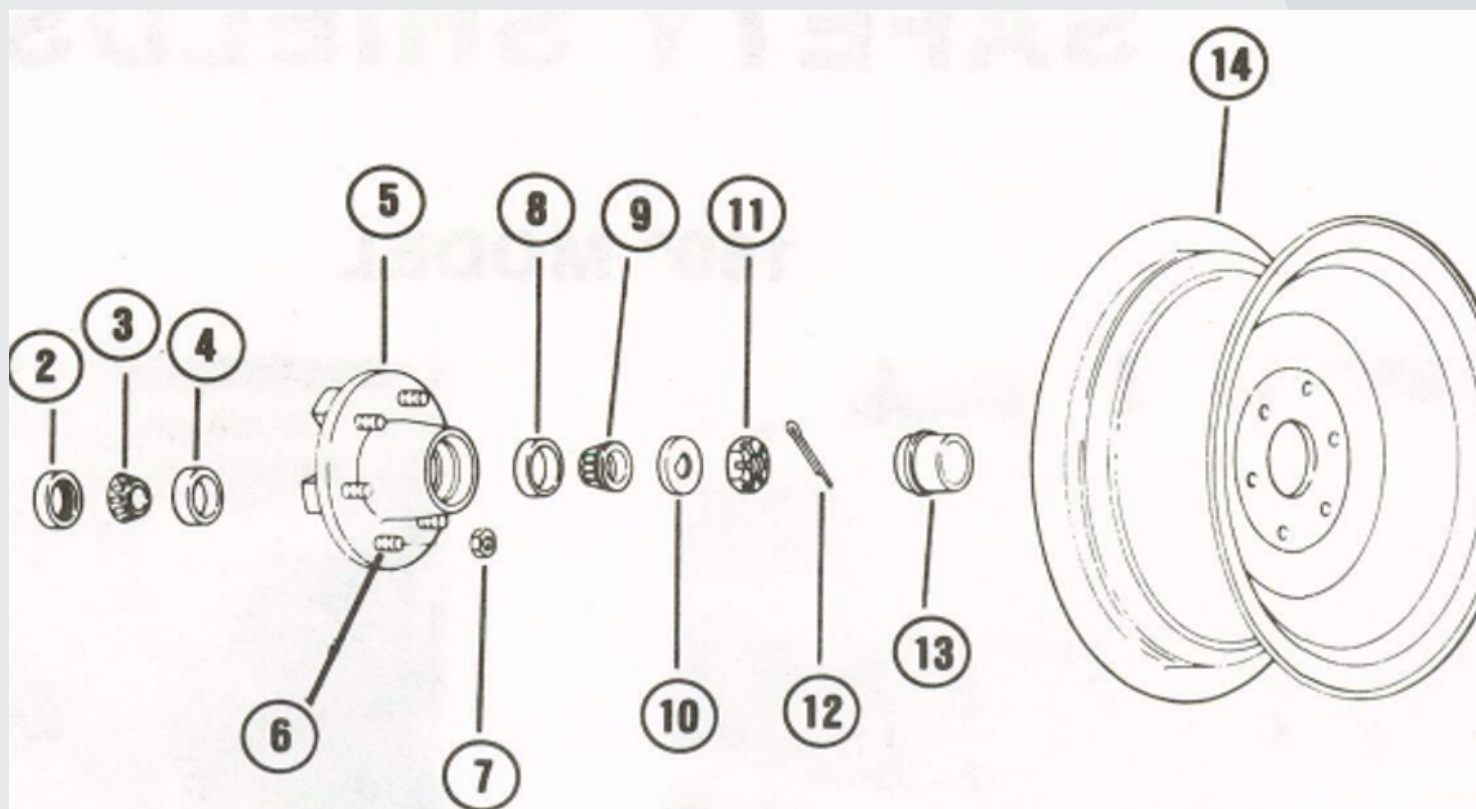
Depth Setting

Us Ag Manufacturing No-Till Drill Parts List



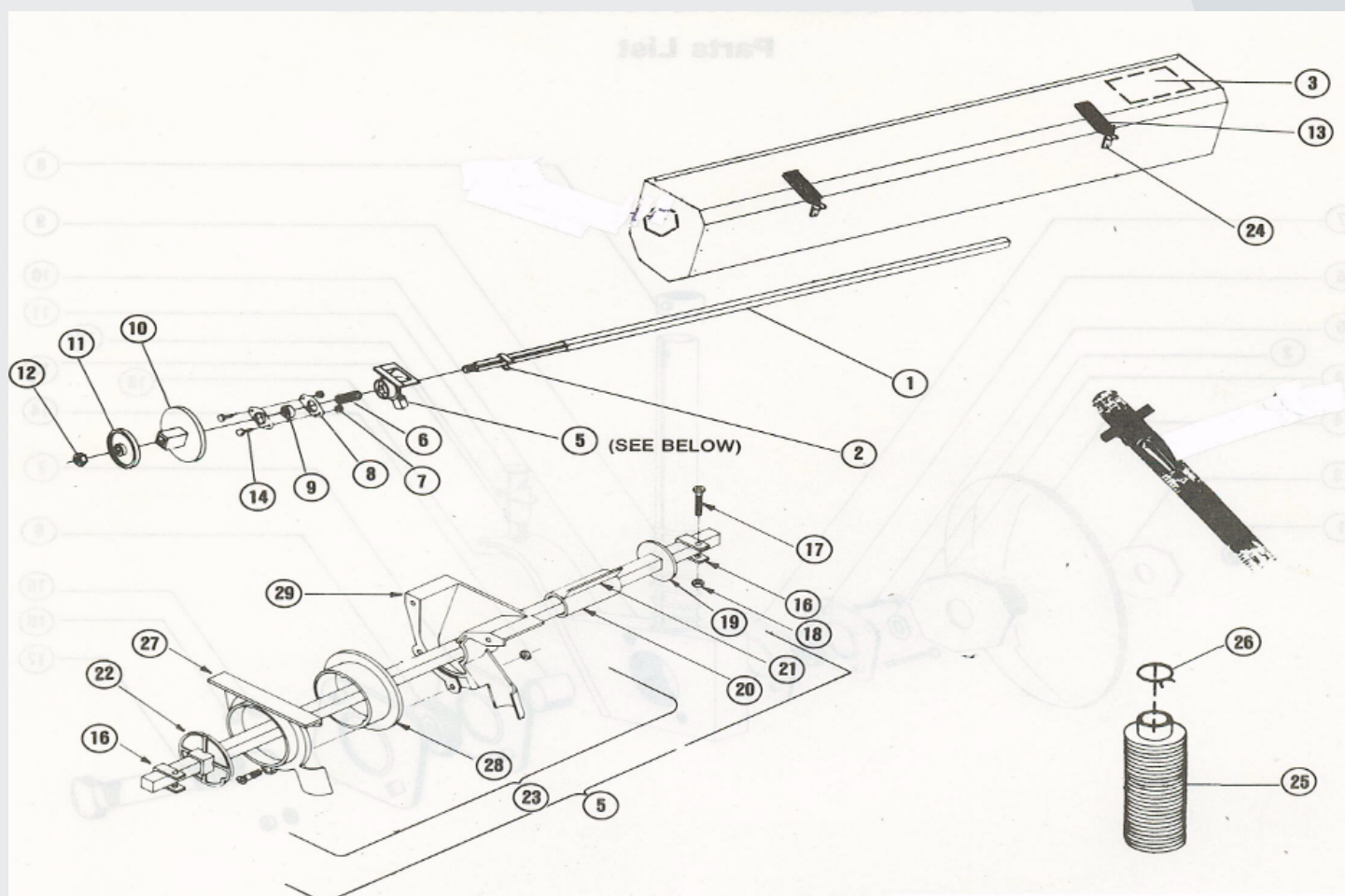
FOOTPIECE

Ref. No.	US Ag Part No.	Description
1		1 1/8" NUT, SAE GD 5
2		1" HARD MACHINE WASHER
3		BACKUP PLATE
4		18" 9 GAUGE DISC, 1 1/8" ROUND
5		BOLT, 3/8" x 3" GD 5
6		1 1/8" SEALED BEARING
7		FLANGE, 1 1/8"
8		FOOTPIECE COLLAR
9		SPRING, 5" x 2"
10		FOOTPIECE
11		BOLT, 3/4" x 6 1/2", SAE GD 5
12		U-BOLT, FITS 1" BUSHING
		U-BOLT, FITS 1 1/4" BUSHING
13		HARD BUSHING 1" OD
		HARD BUSHING 1 1/4" OD
14		SPACER
15		3/8" LOCK WASHER
16		NUT, 3/8"
17		MAIN BOLT, 1 1/8" x 5 1/2", SAE GD 5
18		3/4" NUT, SAE GD 5



3500# WHEEL HUB ASSEMBLY (FOR 160", 120", & 80")

Ref. No.	US Ag Part No.	Description
01		COMPLETE HUB ASSEMBLY W/ SPINDLE
02		GREASE SEAL
03		INNER WHEEL BEARING
04		INNER BEARING CUP (RACE)
05		6 BOLT HUB
06		WHEEL STUD
07		LUG NUT
08		OUTER BEARING CUP (RACE)
09		OUTER BEARING
10		SPINDLE "TANG" WASHER
11		SPINDLE CASTLE NUT
12		COTTER PIN
13		EZ LUBE GREASE CAP
14		15" X 6" BOLT WHEEL
15		COMPLETE HUB ASSEMBLY W/ SPINDLE (80" DRILL)



MAIN HOPPER

Ref. No.	US Ag Part No.	Description
01		SEEDER SHAFT, 80" MODEL
01		SEEDER SHAFT, 120" MODEL
01		SEEDER SHAFT, 160" MODEL
02		SEEDER LOCK COLLAR
03		SEED RATE DECAL
05		COMPLETE SEEDER ASSEMBLY
06		RETURN SPRING
07		NUT 3/8" NYLON LOCK NUT
08		BEARING FLANGE
09		3/4" BORE BEARING
10		SPROCKET 54 TOOTH
11		ADJUSTING HAND WHEEL
12		5/8" NYLON LOCK NUT
13		RUBBER SNUBBER
14		3/8" X 1 1/4" GR 5 BOLT
24		RUBBER SNUBBER CATCH
25		RUBBER SEED TUBE
26		HOSE CLAMP

US AG MANUFACTURING NO-TILL DRILL																						
SEEDING RATE CHART - RATES IN POUNDS PER ACRE																						
SEED	COTTON			SOYBEANS			MILO		SAFFLOWER		WHEAT & RYE		BARLEY		OATS		RICE		ALFALFA *	FLAX*	FESCUE	
SPROCKET RATIO	1:2	1:1	2:1	1:2	1:1	1:2	1:2	1:1	1:2	1:1	1:2	1:1	1:2	1:1	1:2	1:1	1:2	1:1	1:2	1:2	1:1	
3/16	-	-		-	-	-	5	10	-	-	3	7	-	-	-	-	-	-	12	7	1	3
1/4	-	-			-	-	12	24	7	10	10	18	7	12	-	-	-	-	18	12	3	7
5/16	-	-			-	-	18	34	9	18	14	29	10	19	-	-	-	-	21	18	9	14
3/8	-	-			-	-	-	-	10	21	19	40	18	35	-	-	18	35	24	21	10	19
1/2	16	31			-	-	-	-	18	35	33	65	26	53	24	45	24	53	27	21	14	25
9/16	21	45			-	-	-	-	21	42	36	77	31	60	27	53	31	63	33	23	16	29
5/8	24	51			31	60	-	-	24	49	40	88	35	67	31	57	35	70	35	25	19	35
11/18	30	57			34	69	-	-	27	56	45	93	42	77	33	67	38	80	38	27	21	38
3/4	33	69			38	77	-	-	35	70	47	106	45	86	38	70	42	89	-	-	23	42
13/16	38	79			47	91	-	-	38	73	60	117	51	91	41	84	45	98	-	-	25	45
7/8	41	82			49	98	-	-	42	80	63	124	54	93	45	91	49	104	-	-	27	49
CAUTION: Rates are approximate. Operator should verify actual output. Refer to operator's manual before using this chart.																						
SEEDER OPENINGS (INCHES)																						

SEEDER OPENINGS (INCHES)

US AG MANUFACTURING NO-TILL DRILL
SEEDING RATE CHART - RATES IN POUNDS PER ACRE
FOR US AG MANUFACTURING SEED ATTACHMENT - 10 INCH SPACED - LEGUME HOPPER

NOTE: 1:2 Ratio will produce 1/2 rate shown - 2:1 ratio will produce x2 rate shown. The rates shown on this chart are based on seeds of average weight per bushel. Increase opening for lighter seeds; reduce opening for heavier seeds. The operator should verify actual output. When drilling seeds not shown on the chart, compare weight and size of the seeds with those shown and use same settings.

	BIRDSFOOT TREFOIL SERICEA & LESPEDEZA HULLED CRIMSON CLOVER	ALFALFA, RED, ALSIKE & LANDINO CLOVERS	RED TOP, TIMOTHY, SAND & LOVE GRASS	REED CANARY GRASS, KENTUCKY BLUEGRASS	LESPEDEZA UNHULLED	BROOM CORN, HOG MILLET	MILLET	SUDAN GRASS	BERMUDA, CANARY GRASS	RYE GRASS ALTA FESCUE	CRESTED WHEAT, ORCHARD GRASS
SPROCKET RATIO	1:1	1:1	1:1	1:1	1:1	1:1	1:1	1:1	1:1	1:1	1:1
1/16	2	1 1/2	1 1/2	1/2	1/2	1 1/2	1 1/2	-	1	-	-
1/8	4	3 1/2	3	1	1	3 1/2	3 1/2	1	1 1/2	-	-
3/16	6	5	4	2	1 1/2	5	5	5	3	1/2	1
3/8	10	8 1/2	6	3 1/2	3	10	8 1/2	6 1/2	4 1/2	1 1/2	1 1/2
5/8	14	12	9	4 1/2	5	14	12	10	6	2 1/2	3 1/2
7/8	19	15 1/2	12	5	6 1/2	19 1/2	15 1/2	13 1/2	8 1/2	3 1/2	4 1/2
1-1/8	24	19	15 1/2	7 1/2	8 1/2	25 1/2	19 1/2	19	10 1/2	5	5

CAUTION: Rates are approximate. Operator should verify actual output. Refer to operator's manual before using this chart.

SEEDER OPENINGS (INCHES)



About US Ag MFG.

US Ag Manufacturing is a Texas-based company that specializes in the design and manufacture of high-quality trailers and farm equipment. Our team of skilled workers use state-of-the-art technology to design and build durable, long-lasting equipment that can withstand the demands of tough work environments. In addition to our standard line of trailers and farm equipment, we also offer specialized builds for the Oil and Gas Industry. With decades of experience in the Agricultural Industry, we seek to provide quality products that you can count on.

Vision & Mission

Vision

At US Ag Manufacturing, we cultivate the future of agriculture through unwavering commitment to excellence, innovation, and the enduring spirit of American craftsmanship. Our mission is to empower farmers across the nation with robust, precision-engineered equipment that stands as a testament to our dedication to the industry. Rooted in the values of hard work, integrity, and innovation, we strive to redefine agricultural standards with our flatbed trailers, hay trailers, and no-till drills.

Mission

Driven by the ethos of "American-Made, American-Tough," we strive to empower our customers with tools that mirror the robust spirit of the American farmer and rancher. Our mission extends beyond manufacturing; it's a pledge to pioneer advancements in agricultural technology, consistently exceeding industry standards. By blending cutting-edge design with time-honored craftsmanship, we aim to foster a legacy of trust, reliability, and prosperity in the fields we serve. At US Ag Manufacturing, we sow the seeds of agricultural excellence, ensuring a harvest of success for those who depend on the strength and reliability of our equipment.

Our Other Lines



In-Line Hay Trailers




Flatbed Trailers


Contact Us

Got a service question, interested in becoming a dealer, or looking for our latest product? Give us a call! At US Ag Manufacturing, we are always willing to find a solution to your problem. Check out our website below for our normal business hours and feel free to check out our other product lines.


- **Phone**

 (903) 389-6342


- **Message**

 marketing@usag-mfg.com

- **Website**

 www.usag-mfg.com

- **Address**

 211 Interstate 45 North
Fairfield, TX 75840

