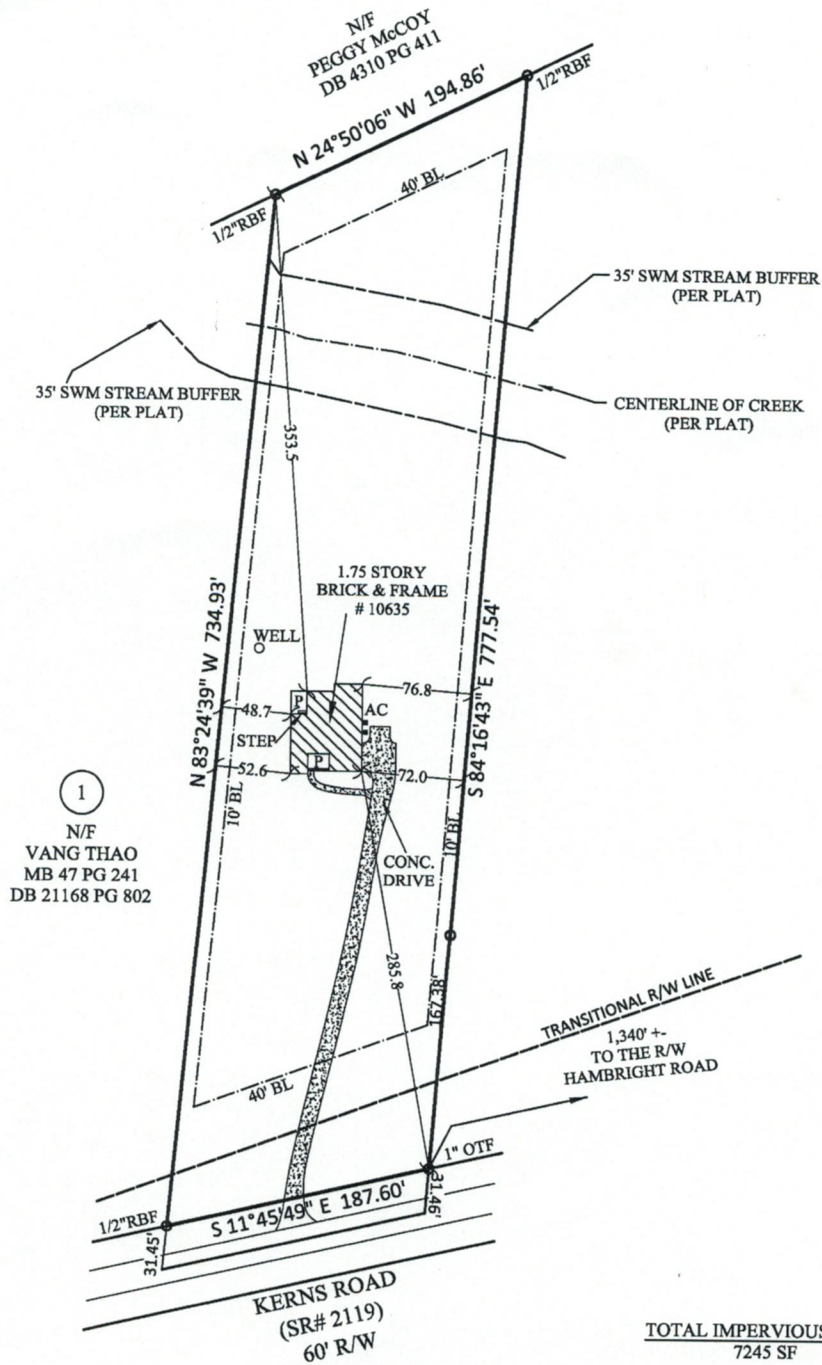
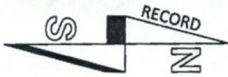
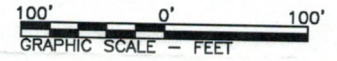


GENERAL NOTES

1. THIS PROPERTY IS SUBJECT TO ADDITIONAL EASEMENTS OR RESTRICTIONS OF RECORD.
2. CARTER AND CLARK SURVEYORS IS UNABLE TO WARRANT THE ACCURACY OF BOUNDARY INFORMATION, STRUCTURES, EASEMENTS, AND BUFFERS THAT ARE ILLUSTRATED ON THE SUBDIVISION PLAT.
3. UTILITY EASEMENT HAS NOT BEEN FIELD VERIFIED BY SURVEYOR. CONTACT UTILITY CONTRACTOR FOR LOCATION PRIOR TO CONSTRUCTION. (IF APPLICABLE)
4. THIS PLAT IS FOR EXCLUSIVE USE BY CLIENT. USE BY THIRD PARTIES IS AT THEIR OWN RISK.
5. DIMENSIONS FROM HOUSE TO PROPERTY LINES SHOULD NOT BE USED TO ESTABLISH FENCES.
6. THIS PLAT HAS BEEN CALCULATED FOR CLOSURE AND IS FOUND TO BE ACCURATE WITHIN ONE FOOT IN 90,334 FEET.
7. THE FIELD DATA UPON WHICH THIS PLAT IS BASED HAS A CLOSURE PRECISION OF ONE FOOT IN 10,000 FEET AND AN ANGULAR ERROR OF 7 SECONDS PER ANGLE POINT AND WAS ADJUSTED USING THE COMPASS RULE.
8. EQUIPMENT USED: TOPCON APL1 TOTAL ROBOTIC STATION.

ADDRESS: 10635 KERNS ROAD
 AREA: 130,663 S.F. ~ 3.00 ACRES

SCALE: 1" = 100'



①
 N/F
 VANG THAO
 MB 47 PG 241
 DB 21168 PG 802

LEGEND:

- RBS- Rebar Set
- RBF- Rebar Found
- OTPF- Open Top Pipe Found
- CTPF- Crimp Top Pipe Found
- BL-Building Line
- DE- Drainage Easement
- PE- Perpetual Easement
- SSE- Sanitary Sewer Easement
- P- Porch
- UE- Utility Easement
- X- Fence
- D- Drainage Easement
- S- Sewer Easement

TOTAL IMPERVIOUS AREA
 7245 SF