

Environment & Safety

The safety of the communities, people, and the environment is at the heart of our project. We are committed to being good neighbors and incorporating feedback from all relevant stakeholders into both the proposed route and the project's overall design.

Core Value. Safety is at our core and the Traverse Pipeline's highest priority.

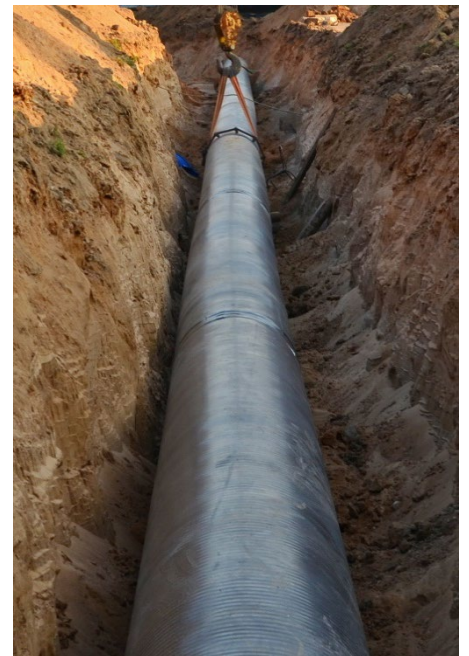
Operational Safety. Once completed, highly trained pipeline controllers use advanced technology to carefully monitor our pipelines — 24/7/365 — and complete regular aerial and ground safety inspections along the route.

Safety Team. We employ a dedicated team of safety and environmental professionals who build and maintain stringent safety programs and practices, and every single employee and contractor has the authority to stop work they believe is unsafe.

Safety Dedication. We are dedicated to pipeline safety, use high-quality, US-made steel pipe, and ensure our pipelines meet or exceed the applicable standards for pipeline construction and operation and the contractor has the authority to stop work they believe is unsafe.

Safeguarding the Pipe's Integrity

- Each joint of pipe is inspected before it leaves the mill and uses more stringent specifications than required by federal standards.
- One hundred percent of the field welds are examined and tested before the line is placed in service.
- A post-construction hydro test is conducted, and inspection tools are run immediately upon completion to verify the condition of the pipe.
- The line is walked with a tool to ensure that there are no issues with the pipe's specialized coating.
- A cathodic protection system designed to guard against corrosion and to help maintain ongoing structural integrity.
- In cases where pipe installation is delayed, a special UV protective coating will be applied to the pipes to prevent coating degradation.



Planning

- **Environmental Permits.** We've secured the environmental permits from state, and local agencies, and gathered significant amounts of environmental data through field study and analysis, which we provide, to regulators and permitting agencies as required.
- **Environmental Study/Biology.** Biologists have inspected the entire route and have not identified any potential for adverse effects to threatened or endangered species, or the habitat, that will occur during the construction or operation of the Matterhorn Express Pipeline.



Construction

- **Safe Construction.** The safety of our personnel, landowners, and the surrounding communities is of the utmost importance throughout the construction process. Utilizing industry best practices, we ensure the Matterhorn Express Pipeline is completed in a safe and secure manner.

Operation

- **Remote Shutdown.** Highly trained pipeline controllers are able to take real-time and nearly instantaneous action to remotely shut down a pipeline system if a problem is suspected and the line can only be returned to operation after field personnel conduct a visual inspection.
- **Pipeline Inspection.** Regular aerial surveillance of the line to look for potential risks to the pipeline, including encroachment or other unauthorized activity on the right-of-way, as well as any other potentially concerning surface conditions along the pipeline. We also conduct regular foot patrol inspections along the entire route.
- **Pipeline Markers.** Pipeline markers installed within line-of-sight on the pipeline route noting the general location of the pipeline, including at road, property, and creek crossings.

CALL 811

One of the biggest dangers to a pipeline, once it is in service, is a third-party line interference. Our industry works together to promote safe digging and excavating practices which, when employed, significantly decrease risks around a pipeline.