



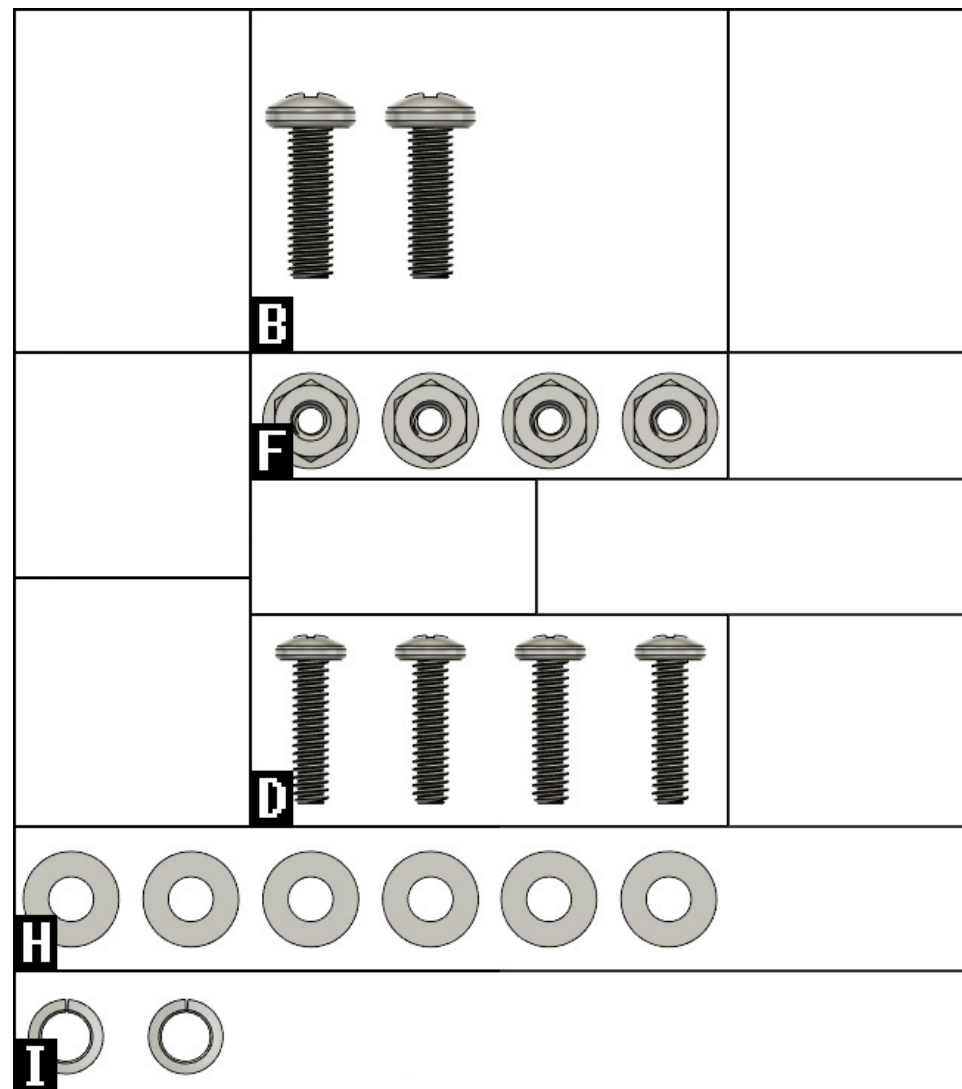
SKU: 40-2003

FISHING ROD HOLDER (2021+ FORD BRONCO)

KIT CONTENTS:

- Two (2) Plastic Fishing Rod Holders
- One (1) Stainless Steel Bracket
- Hardware Bag consisting of
 - (2) M6 x 1mm (20mm Long) Pan Head Screws (B)
 - (4) 10-24 (3/4" Long) Pan Head Screws (D)
 - (4) 10-24 Serrated Flange Locknuts (F)
 - (6) M6 Flat Washers (H)
 - (2) M6 Split Lock Washers (I)

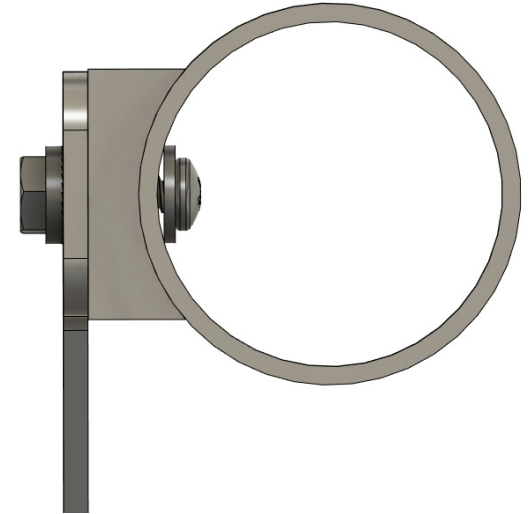
Note: Drawing not to scale. Blank hardware spaces are left for another fishing rod holder product (40-2001 & 40-2002).



FISHING ROD HOLDER (2021+ FORD BRONCO)

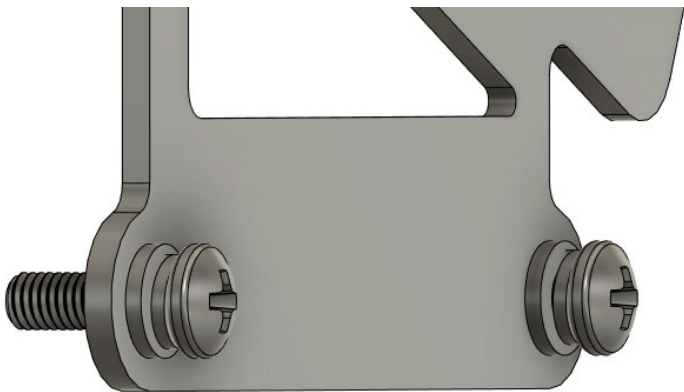
1. ROD HOLDER

Using the provided hardware, mount the plastic fishing rod holder to the stainless steel mounting bracket. You'll use (2) 10-24 3/4" Long Pan Head Screws (D), (2) M6 Washers (H) & (2) 10-24 Flange Locknuts (F) to attach each plastic fishing rod holder to the mounting bracket. **Do not** over-tighten the screws. Tighten them just enough that the washer begins to mushroom into the plastic. Make sure the flared end of the plastic holder angles upwards. Use the following drawing on the right as an example of the correct order for the hardware. Make sure to install the fishing rod holders on the outside of the bracket (otherwise your hood cannot open).



2. MOUNT BRACKET TO TRUCK

Using (2) 20mm Long M6 Pan Head Screws (B), (2) M6 Flat Washers (H) & (2) M6 Split Washers (I) attach the bracket to the vehicles trail sights. You'll need to remove the (2) male bolts on the trail sight (you will re-use the female side). Use the torx key provided in your vehicles hardware kit. Use the following drawing on the bottom left as an example of the correct order for the hardware. The M6 Pan Head Screws (B) will screw into the factory trail sight hardware. Make sure you install the bracket on the outside of the trail site, to allow your hood to open fully.



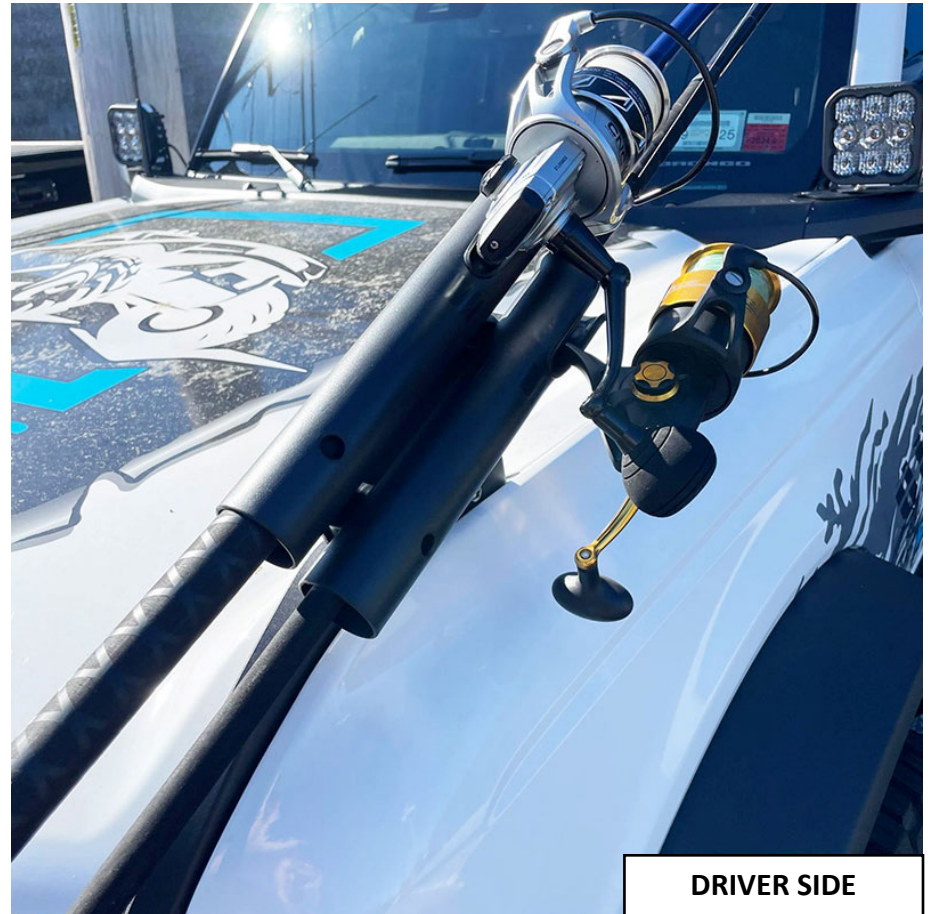
FISHING ROD HOLDER (2021+ FORD BRONCO)

3. MOUNT FISHING RODS

Slide your fishing rods into the fishing rod holders. It's recommended to use a small bungee cord to secure the fishing rod in place. This will help prevent the rod & reel from bouncing around during transport.



PASSENDER SIDE



DRIVER SIDE