



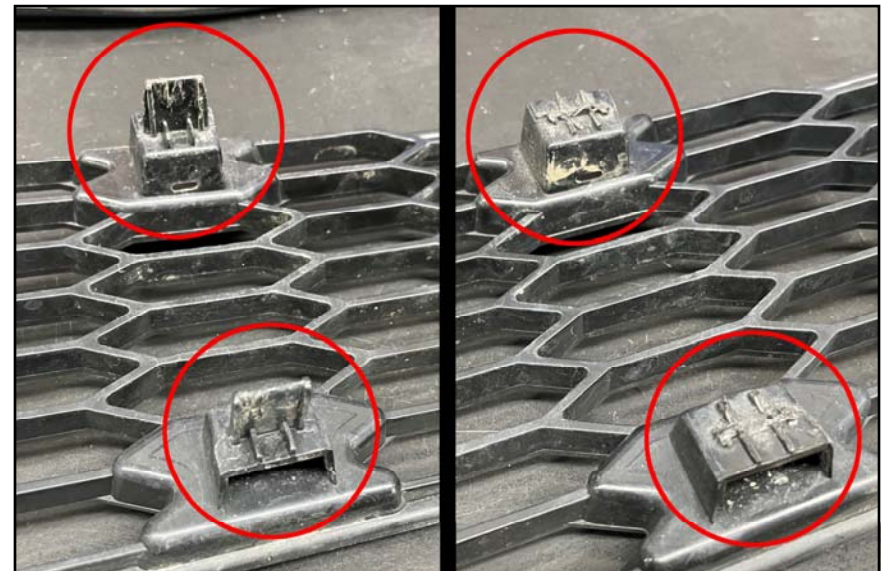
# LOWER GRILL LIGHT BAR BRACKETS FOR 2017-2020 FORD RAPTOR

## INSTALLATION INSTRUCTIONS

1. Remove the lower grill from your front bumper by inserting a plastic pry tool along the edge and gently prying outwards. Do this along the entire perimeter. Do not lose any of the metal clips (they may or may not remain with the lower grill as you remove it).



2. There are 4 center tabs behind the grill portion. You will need to cut the protruding plastic off these. It's recommended to file these down smooth once they are cut-off for best results.





## LOWER GRILL LIGHT BAR BRACKETS FOR 2017-2020 FORD RAPTOR

**3.** Install the brackets on your light bar. Once mounted, insert the entire assembly into the bumper opening as shown and center the assembly. The carriage bolt should be installed on the front of the bracket with the flange locknut behind the bracket. The use of a swiveling wrench will be beneficial during installation. It's best to ensure the power wire exits on the passenger side of the vehicle.



**4.** Be sure the power wire does not interfere with the activated shutters. You can zip tie the wire out of the way to the lower corner of the bracket.

**5.** Route the wire through your engine compartment between the radiator and headlight up to your upfitter harness.

**6.** Re-install the grill back onto your vehicle. Make sure the metal clips are used and not bent (you may need to use a flat head screw driver to bend the metal clips back into place first).



## LOWER GRILL LIGHT BAR BRACKETS FOR 2017-2020 FORD RAPTOR

7. You will find two sets of wires for your upfitters. One set are hot and lead to the upfitters while the other side are passthrough wires (they just go into the cabin for future use). Please refer to the diagrams on the following page for your particular vehicles hot upfitter wire locations. You'll want to strip back a portion of the desired upfitter wire and crimp it onto the desired wire connector on the light bar harness. The ground cable can be secured to a grounding point within the engine bay (there is a nut to the left of the upfitter wires you can utilize).

### COMMON LIGHT BAR AMPERAGE LOADS

Baja Designs 10" OnX6+: 8.4 Amps

Baja Designs 10" S8: 4.0 Amps

Diode Dynamics 6" Stage Series: 1.9 Amps

Diode Dynamics 12" Stage Series: 4.2 Amps

Rigid Industries 10" Radiance+: 5 Amps

Rigid Industries 10" Radiance+ SR Series: 2.9 Amps

Rigid Industries 10" E-Series Pro: 13.21 Amps (Max)\*

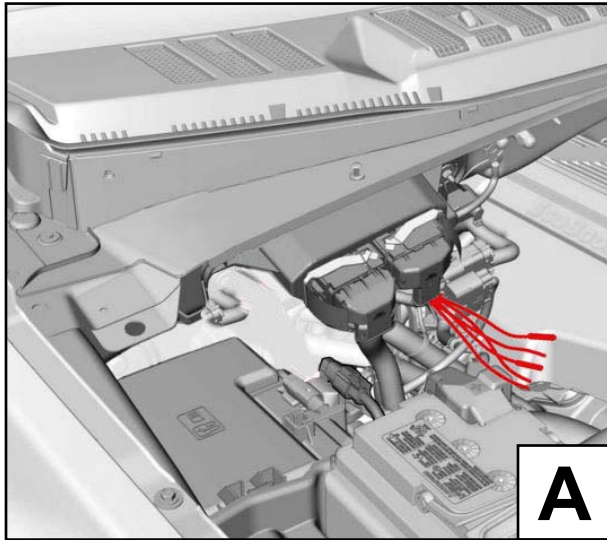
\*The Driving bars require 14.71 amps and may require a relay







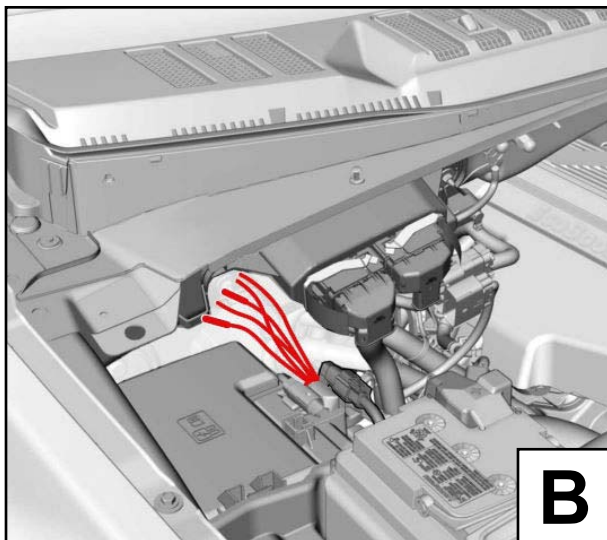
# LOWER GRILL LIGHT BAR BRACKETS FOR 2017-2020 FORD RAPTOR



**A**

**2017  
(FIGURE A)**

<u>SWITCH</u>	<u>MAX AMPERAGE</u>	<u>WIRE COLOR</u>
Aux 1	15 Amp	Green/Blue
Aux 2	15 Amp	Gray/Yellow
Aux 3	10 Amp	Violet/Orange
Aux 4	10 Amp	Brown/Blue
Aux 5	5 Amp	Gray/Orange
Aux 6	5 Amp	Yellow/Violet



**B**

**2018-2019  
(FIGURE B)**

<u>SWITCH</u>	<u>MAX AMPERAGE</u>	<u>WIRE COLOR</u>
Aux 1	15 Amp	Green/White
Aux 2	15 Amp	Brown/Blue
Aux 3	10 Amp	Gray/Yellow
Aux 4	10 Amp	Yellow/Green
Aux 5	5 Amp	Brown/White
Aux 6	5 Amp	Green/Orange

**2020  
(FIGURE B)**

<u>SWITCH</u>	<u>MAX AMPERAGE</u>	<u>WIRE COLOR</u>
Aux 1	15 Amp	Yellow
Aux 2	15 Amp	Green/Brown
Aux 3	10 Amp	Violet/Green
Aux 4	10 Amp	Brown
Aux 5	5 Amp	Blue/Orange
Aux 6	5 Amp	Yellow/Orange