

FLEX-MAT® TENSIONED SERIES



TENSIONED
SERIES

D

- For standard applications and precise sizing
- Square opening replaces woven square cloth and increases throughput
- Eliminates blinding and pegging
- > **OPENING SIZES**
- > **0.059" - 4"**
(1.5 mm - 101.6 mm)



TENSIONED
SERIES

DD

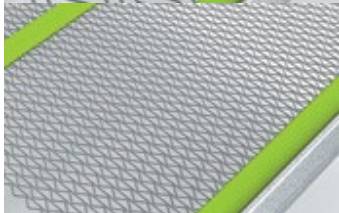
- For high-impact and heavy-material applications as it absorbs impact better than other applications
- Eliminates the "popcorn effect" caused by larger single wires
- > **OPENING SIZES**
- > **1.125" - 4"**
(28.6 mm - 101.6 mm)



TENSIONED
SERIES

S

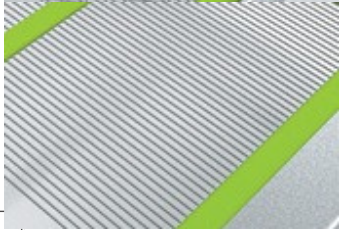
- For round or cubical-shaped material, or when precise passing is not required
- Replaces slotted woven cloth
- Maximizes open area
- Eliminates blinding
- Reduces fines
- > **OPENING SIZES**
- > **0.059" - 2"**
(1.5 mm - 50.8 mm)



TENSIONED
SERIES

T

- Ideal for openings under 0.059" (1.5 mm)
- Replaces fine mesh to better reduce blinding
- > **OPENING SIZES**
- > **0.020" - 2"**
(0.5 mm - 50.8 mm)

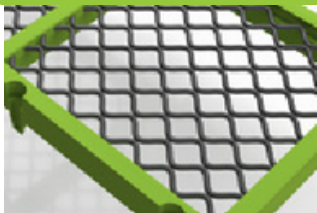


TENSIONED
SERIES

L

- Maximum open area for desanding and removing fines
- Lasts longer than traditional harp/piano wire while keeping material in spec
- Ideal for compost and topsoil
- > **CUSTOMIZED TO SPECIFIC APPLICATIONS**
- > **Starting at 0.031"**
(0.8 mm)

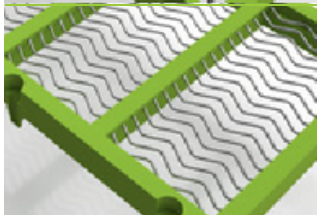
FLEX-MAT® MODULAR SERIES



MODULAR
SERIES

D

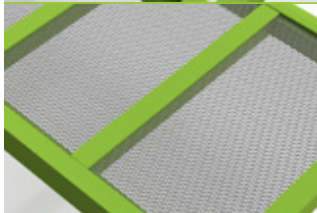
- For standard applications and precise sizing
- Square opening for more open area and throughput
- Eliminates blinding and pegging
- > **OPENING SIZES**
- > **0.059" - 1.575"**
(1.5 mm - 40 mm)



MODULAR
SERIES

S

- For round or cubical-shaped material, or when precise passing is not required
- Maximizes open area
- Eliminates blinding
- Reduces fines
- > **OPENING SIZES**
- > **0.059" - 1.575"**
(1.5 mm - 40 mm)



MODULAR
SERIES

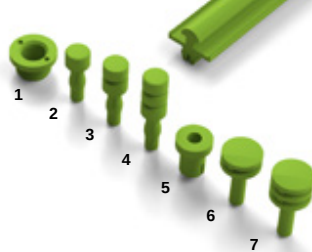
T

- Ideal for openings under 0.059" (1.5 mm)
- Replaces fine mesh to better reduce blinding
- > **OPENING SIZES**
- > **0.020" - 0.055"**
(0.5 mm - 1.397 mm)

MODULAR ACCESSORIES

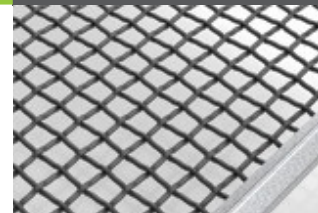
- 1 Threaded insert
For MAXI panel frames
- 2 23 mm pin head
For 30 mm-thick panels
- 3 23 mm pin head
For 40mm-thick panels
- 4 23 mm pin head
For 50 mm-thick panels
- 5 Sleeve
For 33 mm pin heads
- 6 33 mm pin head
For 30 mm-thick panels
- 7 33 mm pin head
For 40 mm-thick panels

Knock-in bar
For grooved panels



WOVEN SCREEN

made with FLEX-MAT'S OPTIMUMWIRE



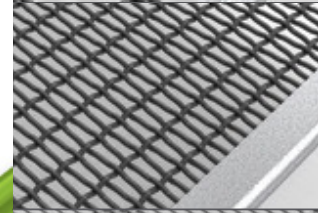
SQUARE

- For general applications
- Provides precise passing
- > **OPENING SIZES**
- > **0.093" - 6"**
(2.36 mm - 152.4 mm)



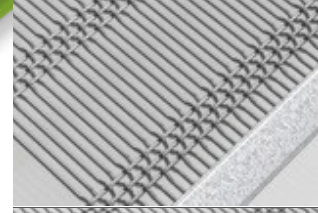
DOUBLE
WEAVE
M

- Square type for heavier applications (withstands up to 4 times more impact force than heavier single-strand woven screens)
- Provides precise passing
- Ideal for scalping and top-deck applications (provides up to 50 % more throughput than perforated punch plates at lower cost)
- > **OPENING SIZES**
- > **1.125" - 4"**
(31.75 mm - 127.0 mm)



SLOTTED

- Single or triple chute
- Removes fines
- Provides more open area than square openings
- Used with round or cubical-shaped material or when precise passing is not required
- > **OPENING SIZES**
- > **Customized to specific applications**



HYPERSLOT™

- Produces vibration to reduce blinding
- Creates tumbling effect for better fines removal
- Slows material down to provide more time for material to pass over the openings
- > **OPENING SIZES**
- > **Customized to specific applications**

THE POWER OF HIGHER VIBRATION

MORE PROFIT

- > Pays for itself in days
- > Better quality product in spec
- > Less downtime and maintenance costs

LOWEST
COST
PER **TON**

MORE WEAR LIFE

- > Made with OPTIMUMWIRE
- > Flat surface & faster material passing

UP TO
5x
MORE
WEAR LIFE

MORE SCREENING EFFICIENCY

- > Fastest material stratification
- > More open area

UP TO
40%
MORE
THROUGHPUT

ADDED VALUE SERVICES

- > Screening Performance Assessment to optimize your productivity.
- > On-site training on screening maintenance.
- > Technical assistance.

SCREENING EXPERTS

MAJOR trains, certifies and supports each of its Dealers and Representatives in high-performance screening operations.

majorflexmat.com

FLEX-MAT[®]

HIGH VIBRATION WIRE SCREEN

bondyn

32 Watson Parkway South
Guelph ON N1L 0C3
1-519-824-7565
1-866-926-6396
success@bondyn.com
www.bondyn.com

MKH02161219
Printed in Canada

 **MAJOR[®]**

©2020 Major Wire Industries Limited. A Haver & Boecker Company. All Rights Reserved.