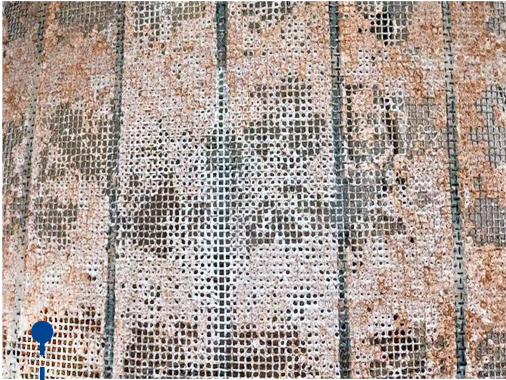




SUCCESS  SPOTLIGHT

 JAMAICA  LIMESTONE  3500 TONS/DAY  ELIEZER ARAUJO



CONCERN

The customer's existing 1/2" woven screens were regularly blinding and plugged with material, requiring multiple shut downs in order to clean the screens to help minimize lost production and keep material in spec.

SOLUTION

After observing the material feed, assessing the screen box function, and undergoing inspections, Bondyn recommended that installing MAJOR® FLEX-MAT® screens would resolve the issue.

REMOVED

Woven Wire 1/2"

INSTALLED

FLEX-MAT® D-1/2"

RESULTS & BENEFITS

Installing FLEX-MAT® D-1/2" screens resulted in a 20% boost in production, improved efficiency, consistently met production goals and had very little material buildup. Switching to FLEX-MAT® also produced a more consistent specification, eliminating carryover of sized product.



CUSTOMER FEEDBACK

“



Since installing Flex-Mat® screens at our crushing operation in Jamaica, we've seen a 20% boost in minus 1/2" production, even with the constant wet weather. These screens have greatly improved efficiency, helping us consistently meet production goals despite challenging conditions. This picture is after a 16 hour shift running very damp raw material. Little to no buildup. The performance has been amazing! - J.M., Plant Manager, Jamaica



At Bondyn, our service does not end in a sale. We pride ourselves in providing ongoing support, ensuring that performance and maximum benefits are achieved for you and your operation.

”

