

# ISO FLOW RATE CHART

Broadcast applications

Color & ISO Code	Pressure (psi)	gpm	FLOW RATE (Gallons/acre) - Nozzle spacing: 20 inches							
			4 mph	5 mph	6 mph	8 mph	10 mph	12 mph	16 mph	20 mph
110 015	15	0.09	6.8	5.5	4.6	3.4	2.7	2.3	1.7	1.4
	20	0.11	8.2	6.5	5.4	4.1	3.3	2.7	2.0	1.6
	30	0.13	9.9	7.9	6.6	4.9	4.0	3.3	2.5	2.0
	40	0.15	11.1	8.9	7.4	5.6	4.5	3.7	2.8	2.2
	50	0.17	12.7	10.2	8.5	6.3	5.1	4.2	3.2	2.5
110 02	15	0.12	8.9	7.1	5.9	4.5	3.6	3.0	2.2	1.8
	20	0.14	10.4	8.3	6.9	5.2	4.2	3.5	2.6	2.1
	30	0.17	12.6	10.1	8.4	6.3	5.0	4.2	3.2	2.5
	40	0.20	14.9	11.9	9.9	7.4	5.9	5.0	3.7	3.0
	50	0.22	16.3	13.1	10.9	8.2	6.5	5.4	4.1	3.3
110 025	15	0.15	11.1	8.9	7.4	5.6	4.5	3.7	2.8	2.2
	20	0.18	13.4	10.7	8.9	6.7	5.3	4.5	3.3	2.7
	30	0.22	16.5	13.2	11.0	8.2	6.6	5.5	4.1	3.3
	40	0.25	18.6	14.9	12.4	9.3	7.4	6.2	4.6	3.7
	50	0.28	20.8	16.6	13.9	10.4	8.3	6.9	5.2	4.2
110 03	15	0.18	13.4	10.7	8.9	6.7	5.3	4.5	3.3	2.7
	20	0.21	15.6	12.5	10.4	7.8	6.2	5.2	3.9	3.1
	30	0.26	19.3	15.4	12.9	9.7	7.7	6.4	4.8	3.9
	40	0.30	22.3	17.8	14.9	11.1	8.9	7.4	5.6	4.5
	50	0.34	25.5	20.4	17.0	12.7	10.2	8.5	6.4	5.1
110 04	15	0.24	17.8	14.3	11.9	8.9	7.1	5.9	4.5	3.6
	20	0.28	20.8	16.6	13.9	10.4	8.3	6.9	5.2	4.2
	30	0.35	26.3	21.0	17.5	13.1	10.5	8.8	6.6	5.3
	40	0.40	29.7	23.8	19.8	14.9	11.9	9.9	7.4	5.9
	50	0.45	33.4	26.7	22.3	16.7	13.4	11.1	8.4	6.7
110 05	15	0.31	23.0	18.4	15.3	11.5	9.2	7.7	5.8	4.6
	20	0.35	26.0	20.8	17.3	13.0	10.4	8.7	6.5	5.2
	30	0.43	31.9	25.5	21.3	16.0	12.8	10.6	8.0	6.4
	40	0.50	37.1	29.7	24.8	18.6	14.9	12.4	9.3	7.4
	50	0.56	41.6	33.3	27.7	20.8	16.6	13.9	10.4	8.3
110 06	15	0.37	27.5	22.0	18.3	13.7	11.0	9.2	6.9	5.5
	20	0.42	31.2	24.9	20.8	15.6	12.5	10.4	7.8	6.2
	30	0.52	38.6	30.9	25.7	19.3	15.4	12.9	9.7	7.7
	40	0.60	44.6	35.6	29.7	22.3	17.8	14.9	11.1	8.9
	50	0.67	49.7	39.8	33.2	24.9	19.9	16.6	12.4	9.9
110 08	15	0.49	36.4	29.1	24.3	18.2	14.6	12.1	9.1	7.3
	20	0.57	42.3	33.9	28.2	21.2	16.9	14.1	10.6	8.5
	30	0.69	51.2	41.0	34.2	25.6	20.5	17.1	12.8	10.2
	40	0.80	59.4	47.5	39.6	29.7	23.8	19.8	14.9	11.9
	50	0.89	66.1	52.9	44.1	33.0	26.4	22.0	16.5	13.2
110 10	15	0.61	45	36	30	23	18	15	11	9
	20	0.71	53	42	35	26	21	17.6	13	10.5
	30	0.87	65	52	43	32	26	21.5	16	13
	40	1.00	74.3	59.4	49.5	37.1	29.7	24.8	18.6	14.9
	50	1.12	83.2	66.5	55.4	41.6	33.3	27.7	20.8	16.6
60	1.22	90.6	72.5	60.4	45.3	36.2	30.2	22.6	18.1	

# ALBUZ Leader in ceramic spray nozzles



## THE NOZZLE RANGE

### BROADCAST APPLICATIONS

TYPE OF NOZZLES	AXI 80°/110° Extended range flat spray nozzle	FAXI Flat spray nozzle with cap	ADI 110° Drift reduction flat spray nozzle (Metering Disc)	CVI 110° Low pressure Air induction flat spray nozzle	CVI-TWIN 110° Low pressure Air induction Twin flat spray nozzle	AVI 110° Air induction flat spray nozzle	AVI-TWIN 110° Air induction Twin flat spray nozzle
SPRAY PATTERN	80° - 110°	80° - 110°	110°	110°	110° 65° 110°	110°	110° 65° 110°
DROPLETS SIZE CHARACTERISTICS							
DRIFT RISKS	Medium	Medium	Low	Very Low	Very Low	Very Low	Very Low
RECOMMENDED PRESSURE RANGE	20 - 60 psi	20 - 60 psi	30 - 60 psi	20 - 90 psi	20 - 90 psi	40 - 90 psi	40 - 90 psi

### ORCHARD | VINEYARD

### OTHER APPLICATIONS

ATR 60° ATR 80° Hollow cone nozzle	ATI 60° ATI 80° Hollow cone nozzle	ATF 80° Full cone nozzle	TVI 80° Air Induction Hollow Cone spray nozzle	AVI 80° Air induction flat spray nozzle	CVI 80° Compact Air induction flat spray nozzle
60° - 80°	60° - 80°	80°	80°	80°	80°
High	High	High	Very Low	Very Low	Very Low
150 - 250 psi	150 - 250 psi	150 - 250 psi	150 - 300 psi	150 - 200 psi	150 - 200 psi

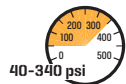
MSI Wide Angle Flat spray nozzle	MVI Air induction Wide Angle Flat spray nozzle	EXA 3 jets Fertilizer nozzle	FESI 6 Jet Cap Fertilizer nozzle	ESI 6 jet Fertilizer nozzle	OCI Off center nozzle	CVI-OC Compact Air induction off center spray nozzle	AVI-OC Air injected off center nozzle
130°-160°	130°-160°				15° 65°	15° 65°	15° 65°
Medium	Very Low	Very Low	Very Low	Very Low	Medium	Very Low	Very Low
15-60 psi	20 - 60 psi	20 - 40 psi	20 - 60 psi	20 - 60 psi	40 - 60 psi	30 - 60 psi	40 - 60 psi



ORCHARD VINEYARD

# ATR 60°/80°

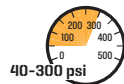
Hollow cone nozzle



ORCHARD VINEYARD

# Disc & core table

Ceramic hollow-cone nozzle



Full cone

# ALBUZ

Leader in ceramic spray nozzles



OTHER APPLICATIONS



BROADCAST APPLICATIONS

# Ceramic Spray Nozzles

PRECISION - DURABILITY - EFFICACY - LONGEVITY



ORCHARD VINEYARD



(psi)	EUROPE FLOW RATE (gpm)										
	0.054	0.073	0.097	0.147	0.2	0.28	0.304	0.361	0.405	0.496	0.619
40	0.054	0.073	0.097	0.147	0.2	0.28	0.304	0.361	0.405	0.496	0.619
50	0.060	0.081	0.108	0.164	0.223	0.311	0.338	0.401	0.450	0.552	0.688
60	0.066	0.088	0.118	0.179	0.243	0.339	0.368	0.437	0.491	0.601	0.749
70	0.071	0.095	0.127	0.193	0.262	0.365	0.396	0.470	0.528	0.647	0.806
80	0.076	0.101	0.135	0.206	0.280	0.389	0.422	0.500	0.562	0.689	0.858
90	0.080	0.107	0.143	0.218	0.296	0.411	0.446	0.529	0.595	0.729	0.908
100	0.084	0.113	0.151	0.230	0.311	0.433	0.468	0.556	0.625	0.766	0.954
110	0.088	0.118	0.158	0.241	0.326	0.453	0.490	0.581	0.654	0.801	0.998
120	0.092	0.123	0.164	0.251	0.340	0.472	0.510	0.606	0.681	0.835	1.039
130	0.095	0.128	0.171	0.261	0.354	0.490	0.530	0.629	0.708	0.867	1.080
140	0.099	0.132	0.177	0.271	0.367	0.508	0.549	0.651	0.733	0.898	1.118
150	0.102	0.137	0.183	0.280	0.379	0.525	0.567	0.673	0.757	0.928	1.155
160	0.105	0.141	0.189	0.289	0.391	0.541	0.584	0.694	0.781	0.957	1.191
170	0.108	0.145	0.194	0.298	0.403	0.557	0.601	0.714	0.804	0.985	1.225
180	0.111	0.149	0.200	0.307	0.414	0.572	0.617	0.733	0.826	1.012	1.259
200	0.117	0.157	0.210	0.323	0.436	0.602	0.649	0.770	0.868	1.064	1.323
220	0.123	0.164	0.220	0.338	0.457	0.629	0.678	0.806	0.908	1.113	1.384
240	0.128	0.171	0.229	0.353	0.476	0.656	0.707	0.839	0.946	1.160	1.442
260	0.133	0.177	0.238	0.367	0.495	0.682	0.734	0.872	0.983	1.205	1.497
280	0.138	0.184	0.247	0.381	0.513	0.706	0.760	0.902	1.018	1.248	1.551
300	0.142	0.190	0.255	0.394	0.531	0.730	0.785	0.932	1.051	1.289	1.602
320	0.147	0.196	0.263	0.407	0.547	0.752	0.809	0.961	1.084	1.329	1.652
340	0.151	0.201	0.271	0.419	0.564	0.774	0.833	0.989	1.116	1.368	1.699

	Orifice diameters (inches)	gpm								Angles	
		40 psi	60 psi	80 psi	100 psi	150 psi	200 psi	300 psi	150 psi	300 psi	
AD 1	AC 13	.036"	0.066	0.078	0.088	0.097	0.115	0.128	0.152	66°	68°
AD 2	AC 13	.041"	0.08	0.10	0.11	0.12	0.14	0.16	0.18	74°	75°
AD 3	AC 13	.047"	0.09	0.11	0.12	0.13	0.16	0.18	0.20	77°	78°
AD 4	AC 13	.063"	0.12	0.14	0.16	0.17	0.20	0.23	0.27	84°	85°
AD 1	AC 23	.036"	0.072	0.080	0.096	0.107	0.124	0.139	0.164	63°	65°
AD 2	AC 23	.041"	0.10	0.13	0.14	0.16	0.19	0.21	0.25	72°	72°
AD 3	AC 23	.047"	0.12	0.14	0.16	0.18	0.21	0.24	0.28	77°	77°
AD 4	AC 23	.063"	0.15	0.19	0.21	0.23	0.28	0.32	0.38	88°	87°
AD 5	AC 23	.078"	0.18	0.22	0.25	0.28	0.34	0.38	0.46	96°	95°
AD 6	AC 23	.094"	0.21	0.26	0.29	0.32	0.39	0.45	0.54	100°	99°
AD 1	AC 25	.036"	0.101	0.122	0.138	0.156	0.185	0.210	0.255	49°	51°
AD 2	AC 25	.041"	0.16	0.19	0.22	0.25	0.29	0.34	0.41	61°	61°
AD 3	AC 25	.047"	0.19	0.23	0.26	0.29	0.35	0.40	0.48	69°	69°
AD 4	AC 25	.063"	0.29	0.35	0.40	0.45	0.54	0.62	0.75	82°	82°
AD 5	AC 25	.078"	0.35	0.42	0.48	0.54	0.65	0.75	0.90	85°	84°
AD 6	AC 25	.094"	0.44	0.54	0.62	0.70	0.85	0.97	1.19	89°	88°
AD 7	AC 25	.125"	0.52	0.63	0.73	0.81	0.98	1.18	1.37	92°	91°
AD 1	AC 45	.036"	0.125	0.148	0.170	0.190	0.225	0.257	0.310	39°	40°
AD 2	AC 45	.041"	0.20	0.25	0.28	0.32	0.38	0.44	0.53	58°	58°
AD 3	AC 45	.047"	0.23	0.28	0.33	0.36	0.44	0.51	0.62	62°	62°
AD 4	AC 45	.063"	0.36	0.43	0.50	0.56	0.68	0.78	0.95	73°	72°
AD 5	AC 45	.078"	0.45	0.55	0.64	0.71	0.86	0.99	1.22	76°	75°
AD 6	AC 45	.094"	0.58	0.72	0.83	0.93	1.15	1.33	1.64	80°	79°
AD 7	AC 45	.125"	0.68	0.84	0.97	1.11	1.35	1.57	1.94	86°	85°
AD 1	AC 46	.036"	0.145	0.178	0.205	0.23	0.28	0.32	0.39	17°	17°
AD 2	AC 46	.041"	0.27	0.33	0.37	0.42	0.50	0.57	0.68	20°	18°
AD 3	AC 46	.047"	0.32	0.39	0.45	0.51	0.61	0.70	0.86	23°	21°
AD 4	AC 46	.063"	0.56	0.68	0.78	0.88	1.07	1.23	1.52	32°	31°
AD 5	AC 46	.078"	0.77	0.94	1.10	1.25	1.50	1.73	2.13	41°	40°
AD 6	AC 46	.094"	1.10	1.35	1.58	1.73	2.16	2.50	3.06	49°	47°
AD 7	AC 46	.125"	1.39	1.72	1.97	2.22	2.73	3.15	3.85	55°	53°



Mailing Address: P.O. Box 1767 - Covington, LA, 70434  
Toll-Free: 1-800-881-4832 - Local phone: 985-892-2778  
Fax: (985) 898-0336 - E-Mail: sales@greenleaftech.com

www.GreenleafTech.com