

Village of Chisholm

177 W FM 550
McLendon Chisholm, TX.



NOW LEASING 

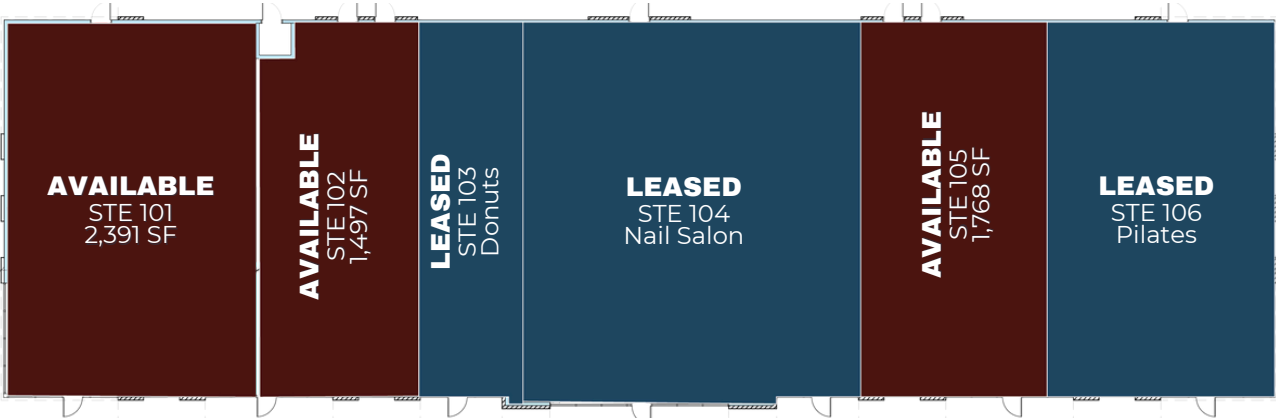
PROPERTY HIGHLIGHTS



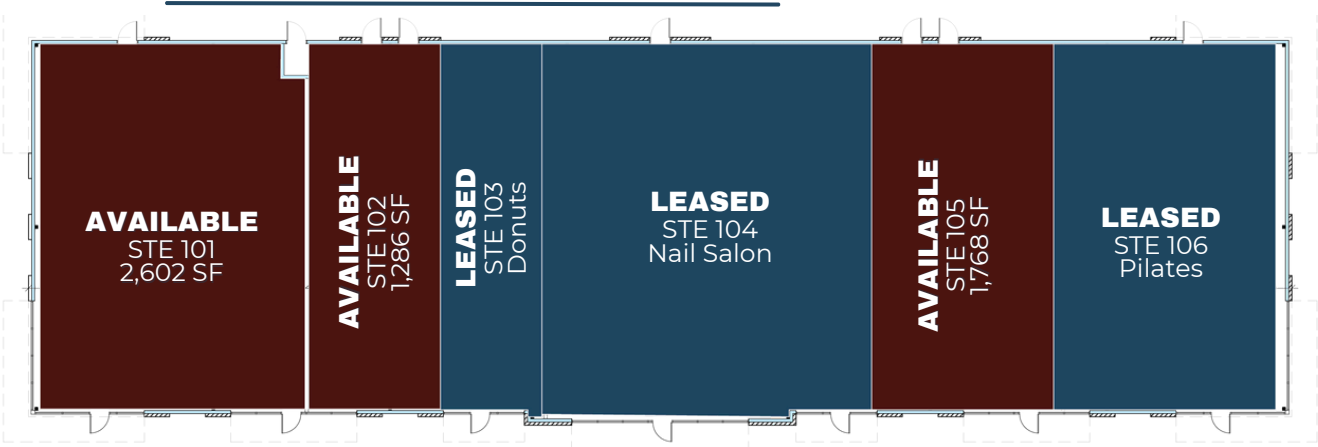
New retail development located on a high-traffic corridor connecting Terrell to Rockwall. This vibrant, fast-growing area offers unmatched visibility and access, making it an ideal spot for retailers, service providers, and dining establishments. Construction is progressing rapidly, with delivery scheduled for Q3 2025.



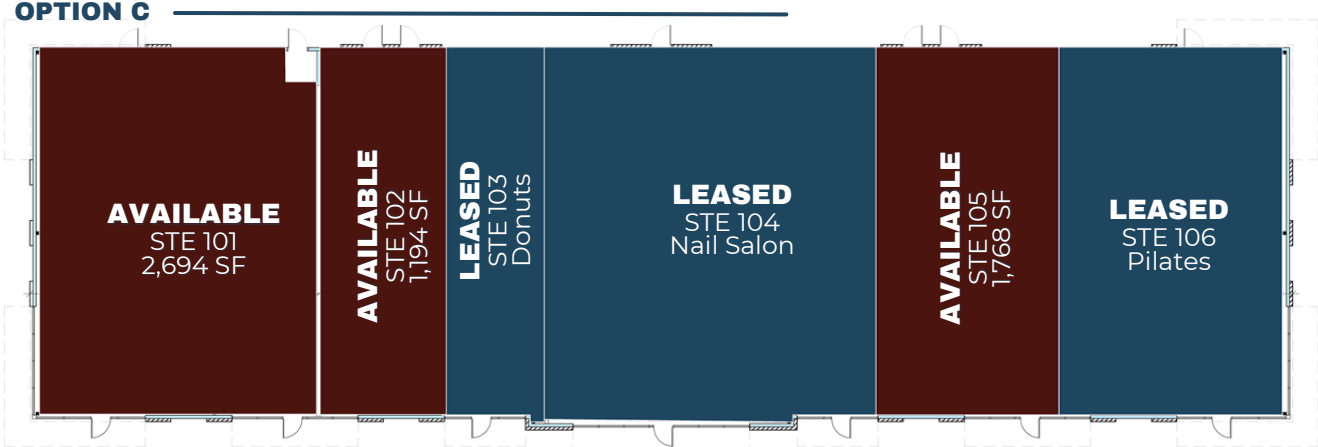
OPTION A



OPTION B



OPTION C



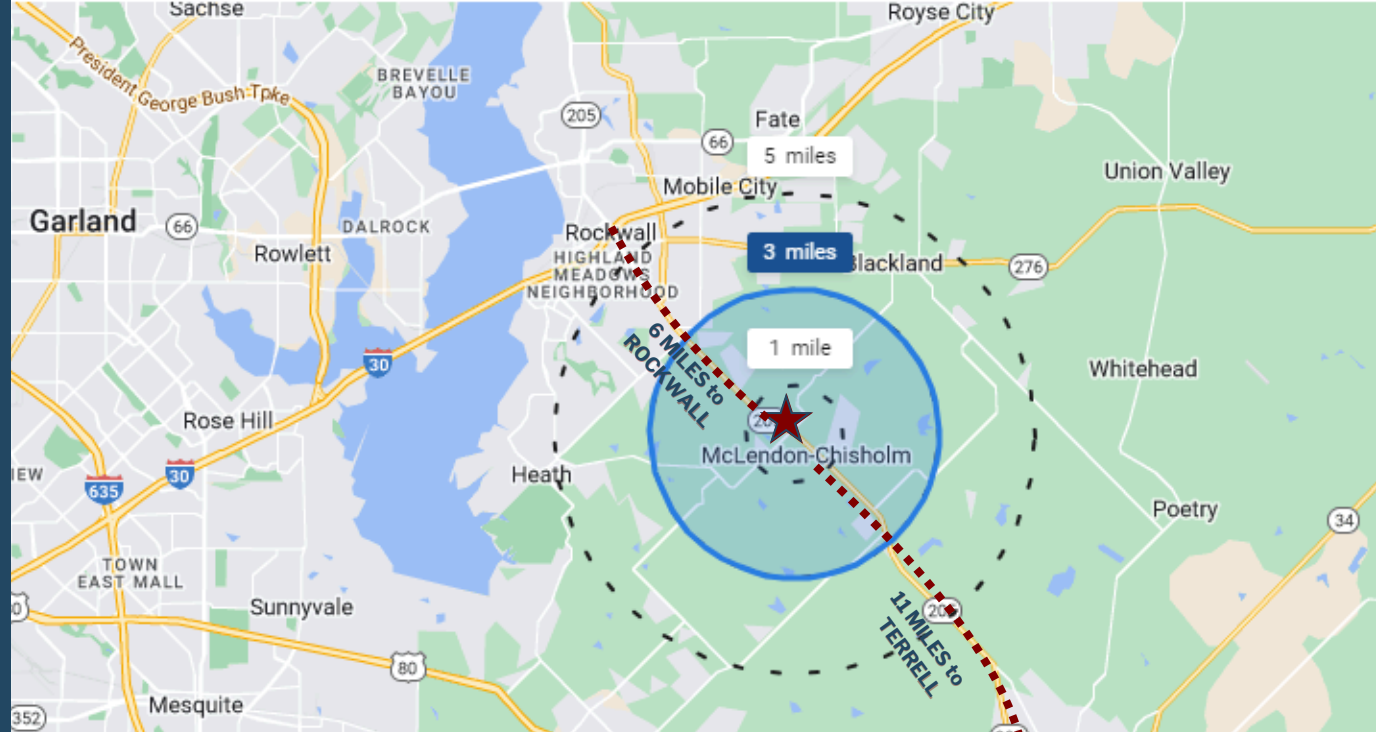


JUNE 2025 | CONCRETE SLAB POURED

Location

McLendon Chisholm, TX.

McLendon-Chisholm, Texas, is an attractive location for opening a business due to its rapidly growing population, proximity to Dallas, and business-friendly environment with low taxes and supportive local government. The affluent community and high quality of life further enhance its appeal. With ample room for growth and a strong sense of community, McLendon-Chisholm offers an ideal balance for entrepreneurs seeking both professional and personal fulfillment.



177 W FM 550, McLendon Chisholm, TX.

Traffic Counts

ST. HWY 205 | 20,783 VPD ('22)
FM 550 | 4,232 VPD ('22)

Demographics 2023 - 3 Mile Radius

25+K
Population

\$192K
Average HH Income

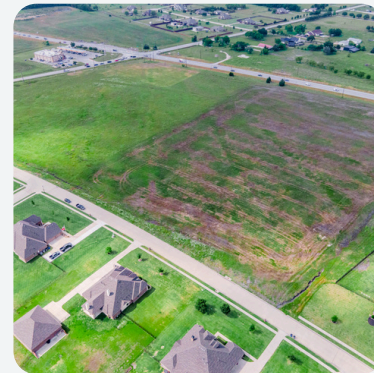
12+K
Households

*source: crexi.com, creop.com, txdot.com





**Images shown are from a recently completed retail center by 1ONEFirm, Inc. in Wylie, TX.*



BRIAN BERRY

469.583.5976

bberry@lonefirm.com



CLAY SPICER

214.293.7762

cspicer@lonefirm.com