

NCCI HOMES SELECTIONS

What is your favorite stone color?

Most of our homes have stone accents on the front elevation.



Chardonnay features a combination of bone, cocoa brown and burgundy accented by Siena gold



Tennessee is a rich dark blend of Caribou brown, autumn leaves, burgundy, and hunter green accent it



Kingsford gray is a simple combination of charcoal with numerous shades of gray for that classic look



Timber is a natural blend of tans and browns allowing this color to harmonize with many exterior colors



Virginia Slate is a Very aided blend of mocha brown, charcoal, and harvest barn with a bus background. Sure to add eloquence to any home



Pennsylvania is a lighter and darker shade of gray tone with mocha brown and onyx. This pallet and Hanses a multitude of exterior designs.

Cabinet Selections

Ebony, Coffee, and Espresso are our standard colors with either an Oxford or Fairmont door style.

Cabinets are per plan. The below photos are for representation only, see floorplan for specific quantities and design.



The above is a standard Ebony color cabinet with the Oxford door style. Cabinets per plan.



The above is a standard Espresso color with an Oxford door style included in the price.
Cabinets per plan.

Coffee color cabinet photos coming soon.



Various other colors like the above have an additional upgrade price. Consult with your Agent.



The above photo shows the difference in "Bisque" and Pebble Gray.



Bisque- an upgrade color compared to pebble on the right



Std Oxford Door Style - Coffee Color



Std Fairmont Door Style - Espresso Color



The above photo shows the beautiful Pebble Gray painted cabinet upgrade.



White (Upgrade)

Espresso (Standard)

Pebble Gray (upgrade)

Coffee (Standard)

CABINET GRANITE



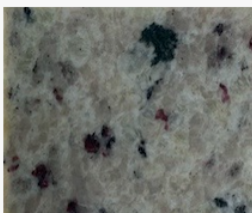
ASHEN WHITE



AZUL PLATINA



CALEDONIA



GIALLO FIESTA



SPRAY WHITE



St CECILIA



UBA TUBA



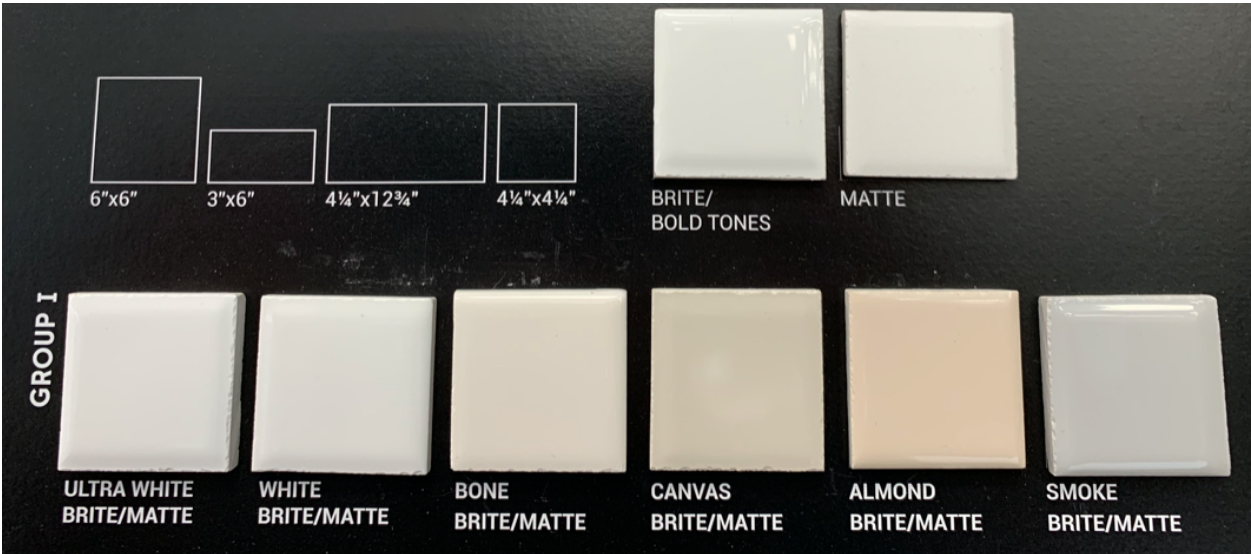
VENITIAN ICE

Want more in the kitchen?

Super-Duper backsplash enhancement. Subway tile. (THIS IS AN UPGRADE)

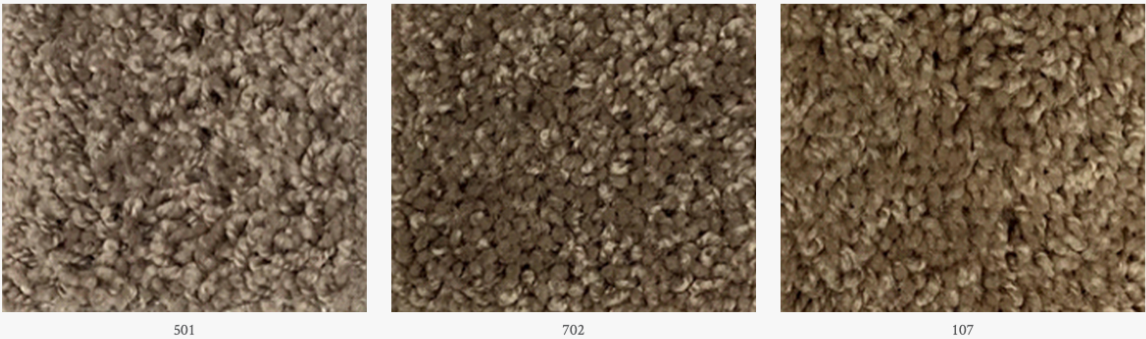


Another upgrade is a Subway tile backsplash in the kitchen. Here are the colors of our most popular 3" x 6" backsplash colors.



CARPET

The following colors are standard colors at no additional charge.



NCCI Homes provides 3 standard (bulk purchase) mainstream buyer favorite colors of carpet.
For an additional cost you can order any of the colors on this color board.

New Standard Laminate Selections. Water-resistant materials.



BATHROOM AND LAUNDRY TILE



CA23 MASSO



CA21 LIGHT NOCHE



CA20 CREMA



CA22 CANDIDO

PLUMBING - TOP QUALITY MOEN FAUCET FIXTURES



Std Brushed Nickel Bath



Std Kitchen Brushed Nickel



"Std Bath Brushed Nickel Shower/Tub

EXTERIOR COLORS

When choosing exterior colors there is:

1. An exterior stone accent color.
2. Primary vinyl siding color.
3. One accent siding *type* and One *color* different from the main home color.

Accents can be (a) vinyl shake or (b) board and batten.

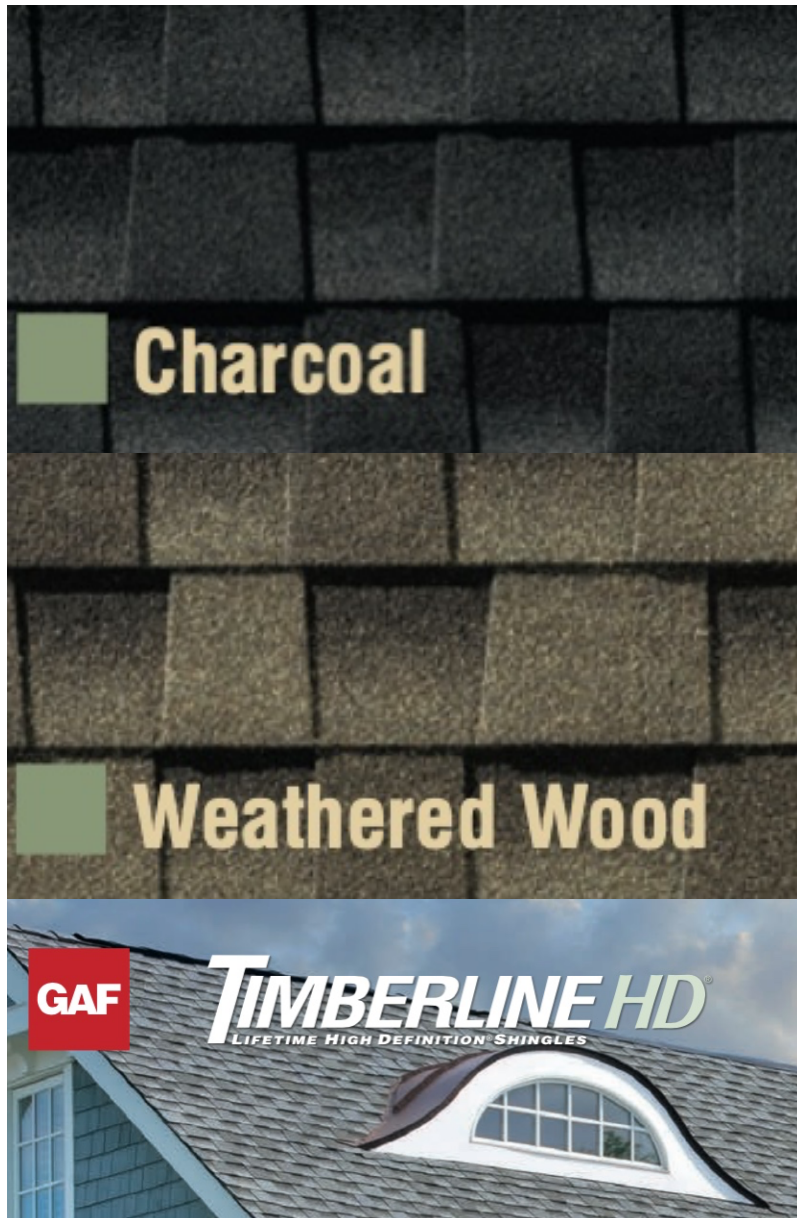
All trim, fascia, freeze boards, and garage doors are white.

The shutters color needs to be selected and we will match the front door to that color.



ROOF SHINGLES

Roofing colors play an important part in color selection. Here are the roof color options.





Accent Siding Type and Color.

As you can see on the front elevation of the homes there is an upper gable area typically sided with a "shaker" or "board and batten" vinyl. Below are color choices for those areas. See the above photo to show you where this is referencing.

Colorsapes™ Dark

				
Sedona Shadow	Rustic Gray	Shamrock	Midnight Surf	Granite
				
Redwood	Natural Cedar	Cocoa	Wedgewood	Weathered Gray
				
Heritage Blue	Ironstone			
				
Marine Blue	Urban Bronze			

Colorsapes™ Premium

				
Cypress	Pebble Clay	Storm	Walnut	Tree Moss
				
Rockslide	Toasted Almond			

Colorsapes™ Traditional

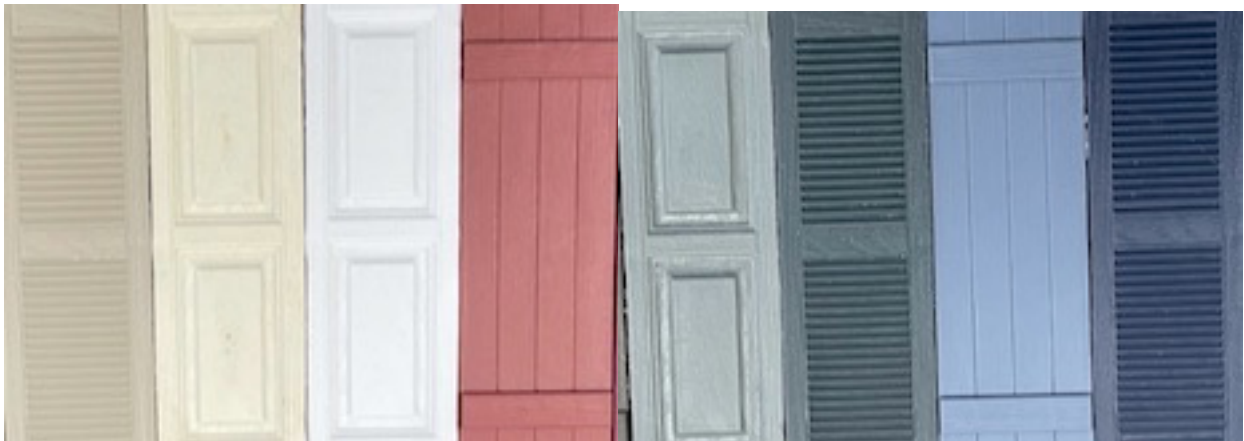
				
Vintage Cream	Sand	Brownstone	White	Heather
				
Wicker	Harvard Slate	Linen	Flagstone	Blue Gray
				
Sterling	Soft Maple			

Shutters and front door colors.

Please NOTE BEFORE you select shutter. You will see 3 different types of shutters. Louvered like #1, Raised Panel like #2 and Board and Batten Like #3. Board and Batten is an upgrade, it will cost more. If you're interested in that look the builder will get you a price based on the number of shutters your home requires.

Please select a color AND style. Louvered or Raised Panel.

The added enhancement to colorful homes vinyl siding and contrasting exterior colors are the selection of solid color shutters. These inoperable shutters are a nice addition to the contrasting look and appeal to the home. A standard is to take the shutter color and paint the exterior of the front door to match the shutter color.



1 2 3 4 5 6 7 8

1 PEBBLE STONE CLAY

2 SAND DOLLAR

3 WHITE

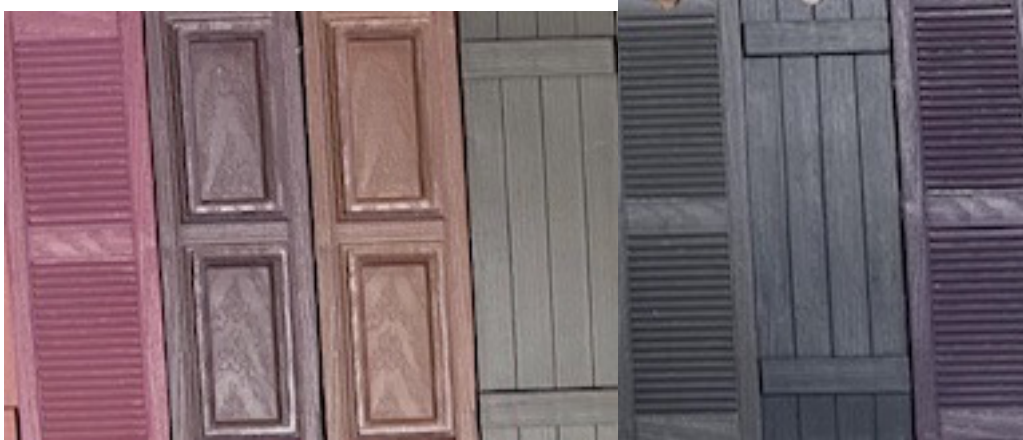
4. RED

5. GRAY

6. BLACKWATCH GREEN

7. BLUE

8. DARK NAVY



9

10

11

12

13

14

15

9. VINEYARD RED

10. WINESTONE

11. TERRA BROWN

12. BROWN

13. PEPPERCORN

14. BLACK

15. DARK BERRY



16 17 18 19

16. COASTAL BLUE

17. DARK SPRUCE

18. SPANISH MOSS

19. GREEN

Interior Decor



All paints are the builder's proprietary blend. All interior trim is a builder selected white.

Paint Upgrades- Anytime there is more than 1 wall color, for example, painting bedrooms different colors.

The garages are finished with drywall however painting the garage is an upgrade. Garage doors have a baked-on white finish.

Walls are painted using flat latex paint, other finishes such as eggshell, etc are upgrades as they do not lend themselves well in the touch up process of construction. We highly recommend you paint these other finishes after the home is complete using your own selected custom painter.

All trim is painted with a semi-gloss finish.

Builders paint materials, finishes are subject to change, substitutions and changes may be made based on availability. *Have all changes in your purchase contract in writing.*