

Retatrutide – LC-MS Analysis Report

Product: Retatrutide Peptide

Batch No.: RTP240801

Purity: ≥98% (HPLC)

Analysis Date: 2025-08-16

Analyst: QC Laboratory, ShiLai™ Peptide Technologies

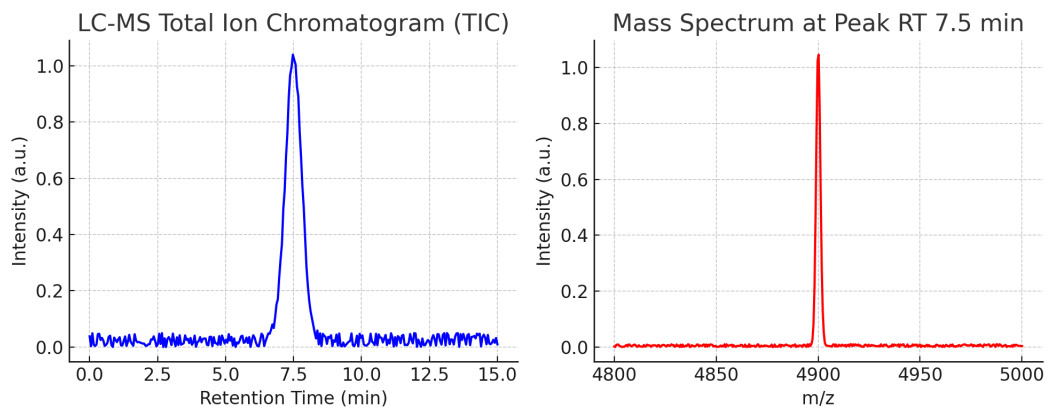
LC Conditions:

Column	C18, 4.6×250 mm, 5 μm
Mobile Phase	A: 0.1% TFA in H ₂ O; B: 0.1% TFA in ACN
Flow Rate	1.0 mL/min
Detection	UV 214 nm
Injection Volume	10 μL

MS Conditions:

Ionization Mode	ESI Positive
Scan Range (m/z)	4000 – 6000
Capillary Voltage	3.5 kV
Drying Gas	Nitrogen, 10 L/min, 300°C
Fragmentor Voltage	150 V

LC-MS Chromatogram & Mass Spectrum:



The LC-MS chromatogram shows a single major peak at retention time 7.5 min. The corresponding mass spectrum confirms the molecular ion $[M+H]^+$ at m/z 4900, matching the theoretical molecular weight of Retatrutide. No significant impurities were detected.