

Green Earth Bag



Folding Bag



Reusable Bag

Mesh Bags



Jute

Wine Bags



Canvas



Gift Bags



get



COMPANY MISSION STATEMENT

Fiberlinks Textiles Inc.'s Green Earth Bag™ division specializes in the manufacturing, design, and creation of custom logo reusable bags. We pride ourselves on our ability to make it affordable for both small and large businesses to Go Green!

With over 30 years of experience, we have developed ways of overcoming the challenges that can sometimes be associated with importing. As a result, we will quickly address any potential delivery issues without the addition of hidden costs. We provide customized and personalized products to our customers; this in turn allows them to enhance brand flexibility and develop customer loyalty. With more than 10 million bags produced annually, we possess the skills and the knowledge to fulfill all of our customers' needs.

Business owners, as well as consumers, can endorse environmental protection and awareness by partnering with Green Earth Bag™. As a company we are dedicated to preserving our environment, one bag at a time.

CUSTOMERS



metropolitanmarket





REASONS TO GO GREEN

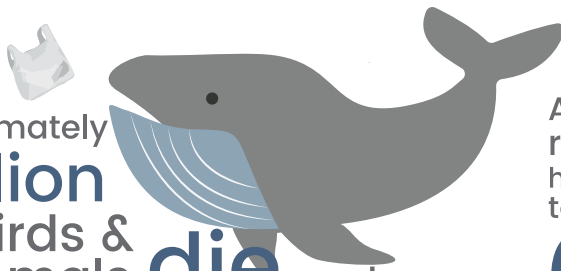
Approximately

1 billion

seabirds & mammals

die

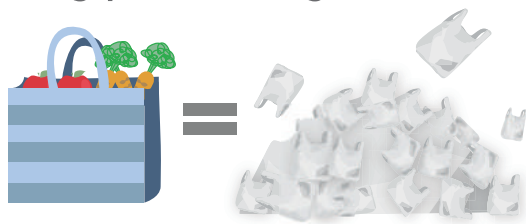
each year by ingesting plastic bags



A high-quality reusable bag has the potential to replace over

600

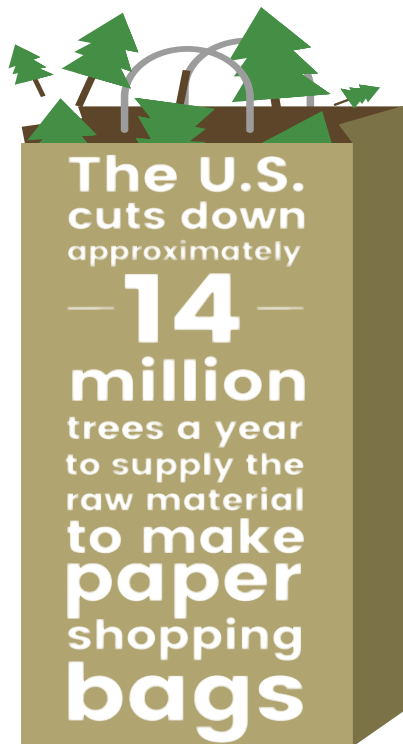
single-use plastic bags



More than a dozen nations have **banned** or **taxed** disposable bags in the past five years



On average, plastic bags are used for only **25 minutes** but it can take **500 years** for the plastic to disintegrate



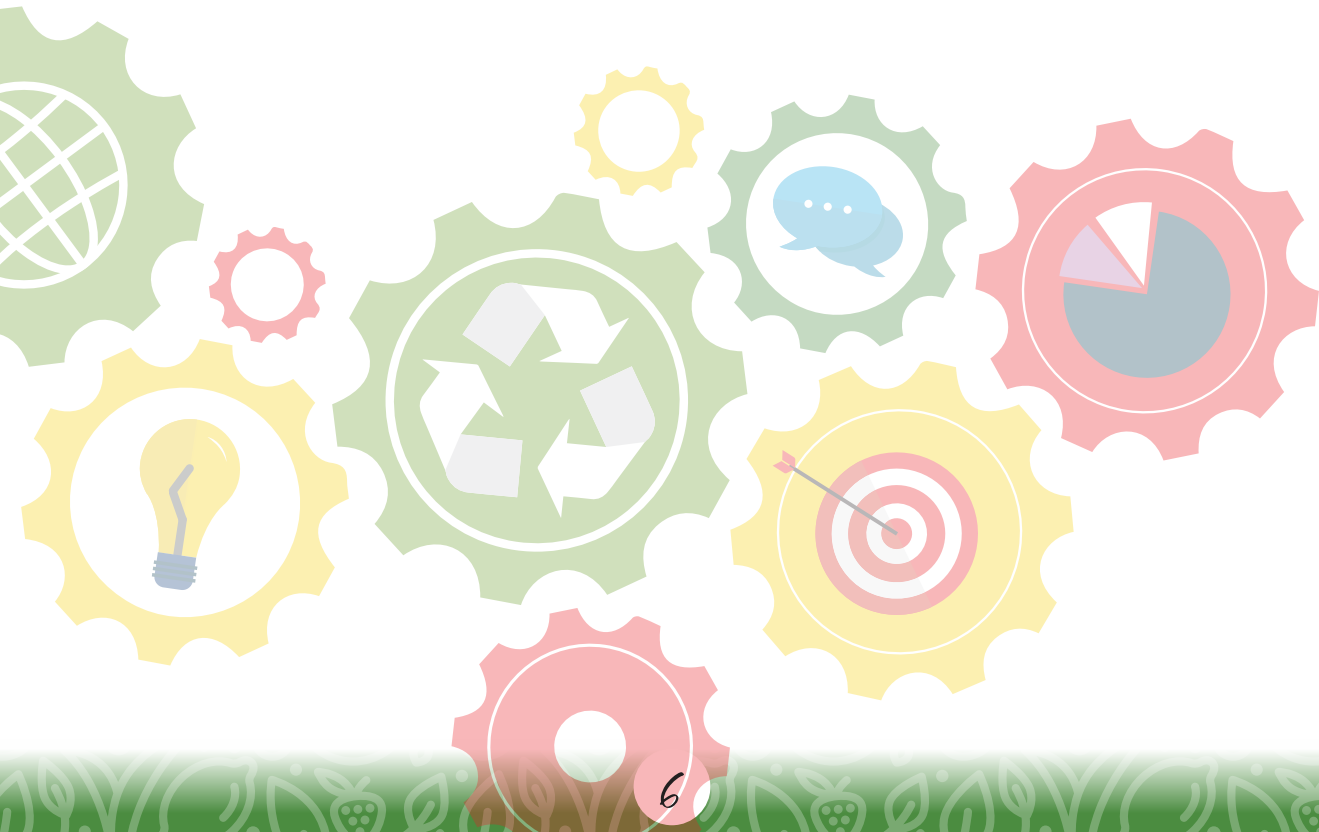


MARKETING YOUR BRAND

With environmental awareness on the rise, reusable bags have become a highly desirable commodity. As a premium supplier, we take pride in the quality of our product to ensure that the bags we sell not only look good, but are also durable and functional.

Customization is our specialty. We work with you to ensure that every aspect of your bag comes together to bring your vision to life. As a marketing tool for promoting brand awareness, we can help you select the perfect style for any sector, whether it be grocery, retail, restaurant, guest services, or pharmacy. Our creative team with a pulse on trends can assist you in building a bag program that connects your brand and sustainable message to your customers.

As a team, we remain on top of the ever-evolving market landscape, providing our clients with the confidence that every bag produced meets state/provincial regulations as well as customer satisfaction.

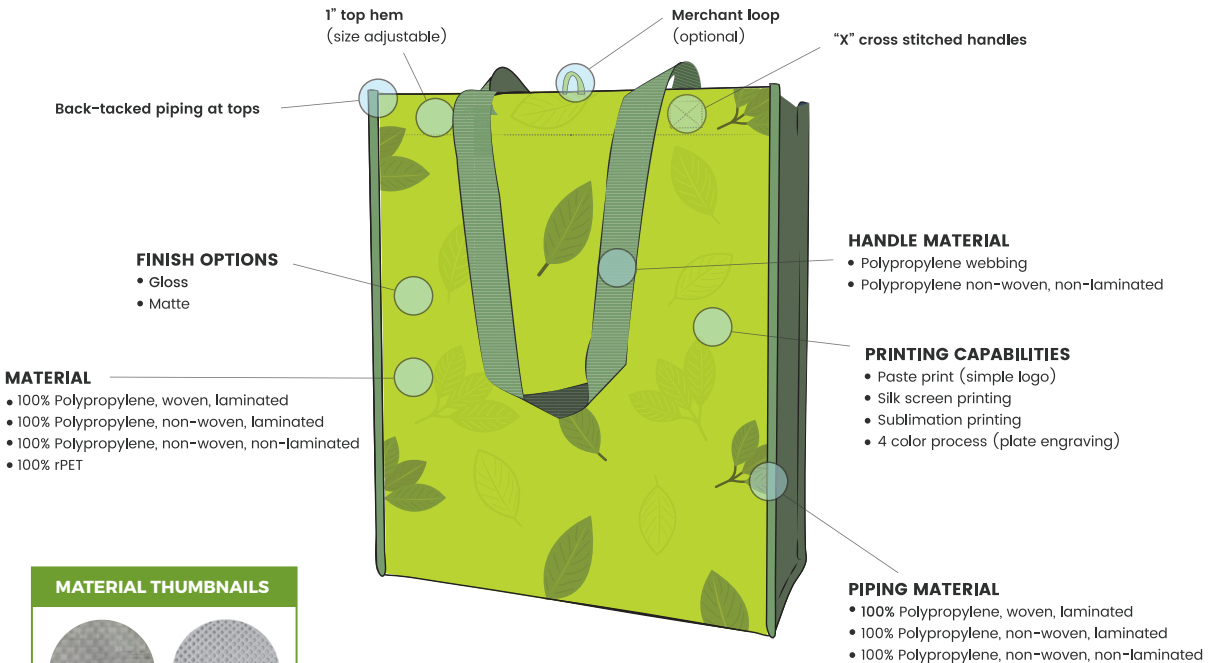




NOT EVERY BAG IS MADE EQUAL

WE PRIDE OURSELVES ON QUALITY

- Only the highest grade of polypropylene fabric is used for all orders
- Top-of-the-line plate machines are used for crisp and clear print imaging
- Handles are sewn with an “X” cross stitch for added durability and support
- Piping is back-tacked for a clean finish
- All customers have access to our creative department, free of charge
- Material from each order is sent to a third party testing facility (Intertek/SGS/BV) to ensure that all components are compliant with current regulations (CPSIA, Prop 65, etc.)
- GEB employs an overseas team, responsible for in-line and final QC audits, ensuring that each order meets client satisfaction.





REUSABLE BAGS EVERYDAY & GROCERY

Our Reusable Bags are crafted from high quality polypropylene material. All material used is 100% recyclable. Each bag has a lifespan of more than 125 uses, making these bags the perfect alternative to single-use plastic, environmentally destructive bags. These durable totes with over-the-shoulder handles are true go-anywhere, carry-everything bags.



ITEM# GEB13128/NBGT



ITEM# GEB752/VEB



ITEM# GEB13128/VCGB



ITEM# GEB752/BOF



ITEM# GEB752/RRR



ITEM# GEB752/VIO



ITEM# GEB752/BEAP



REUSABLE BAGS SEASONAL & GIFT

Customers love choice, which is why bringing in seasonal designs throughout the year helps drive sales. These eco-friendly totes also double up as gift bags.

SEASONAL CALENDAR				
CYCLES	SEASONS	ARTWORK APPROVAL	PO SUBMISSION	DELIVERY TO DC*
1	SPRING/VALENTINES	SEPTEMBER 1st	OCTOBER 1st	DECEMBER
2	EARTH DAY/SUMMER	NOVEMBER 1st	DECEMBER 1st	MARCH
3	AUTUMN/BCA/ HALLOWEEN	MAY 1st	JUNE 1st	AUGUST
4	WINTER/HOLIDAY	JULY 1st	AUGUST 1st	OCTOBER

* lead times may vary



ITEM# GEB752/HAK



ITEM# GEB752/ETC



ITEM# GEB752/FHL



ITEM# GEB752/TOT2



ITEM# GEB752/GTH



ITEM# GEB752/MLC



100% POLYPROPYLENE NON-WOVEN & NON-LAMINATED



ARTWORK COVERAGE

1 or 2 sided printing

a. Without reinforced handles
(Full coverage)

b. With reinforced handles
(Partial coverage)

a.



b.





BASIC BAGS

Made of non-woven, non-laminated polypropylene material, these cost-effective totes come in a variety of colors. All bags are 100% recyclable, washable, and printed with eco-friendly inks.

- Low MOQs
- Up to 6 color printing
- Perfect for giveaways, trade shows & promos

Material can be customized to match a specific PMS color for an additional fee. For orders over 25k, color customization is free of charge.



ITEM# GEB752/EH



ITEM# GEB752/NOR



ITEM# GEB752/BLC



ITEM# GEB752/PFR

STOCK MATERIAL COLOR OPTIONS



BLACK
BLACK C



GREY
COOL GREY 8 C



WHITE
WHITE C



GREEN
7488 C



RED
185 C



PINK
190 C



BLUE
279 C



PURPLE
2577 C



ORANGE
165 C



YELLOW
113 C



COTTON CANVAS TOTES

Our fashionable totes are made from durable, 100% cotton canvas material. These bags make the perfect accessory for grabbing groceries, shopping, carrying toys, or simply toting around town.

All inks used are eco-friendly
This product is machine washable



ITEM# GEB15136/FSI



ITEM# GEB15136/N2W



ITEM# GEB15136/HUS



ITEM# GEB15136/GTH



ITEM# GEB13144/TRI



ITEM# GEB13144/DOT



ITEM# GEB13144/RAIN



ITEM# GEB13144/PTI



COTTON CANVAS TOTES



PRINT OPTIONS

- ▶ Silk Screen
- ▶ Paste print
- ▶ Sublimation

ARTWORK SUGGESTION
1 color artwork, simple logo





FOLDING BAGS

Made from 100% polyester material this bag folds into itself, making it small enough to fit in your purse or pocket.

This product is machine washable and comes in a variety of prints and colors.



ITEM# GEB2213/CT



ITEM# GEB2213/BST



ITEM# GEB2213/PW



ITEM# GEB2213/FL



ITEM# GEB2213/RR



ITEM# GEB2213/LB



ITEM# GEB2213/PK



ITEM# GEB2213/GY

MERCHANDISING OPTION

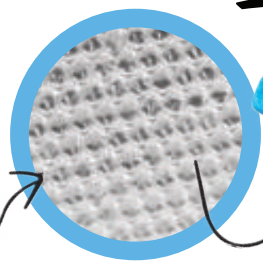
- ▶ Tabletop display
- ▶ Fits perfectly at cash end for added customer visibility
- ▶ Display can hold up to 30 pcs
- ▶ Grab & Go



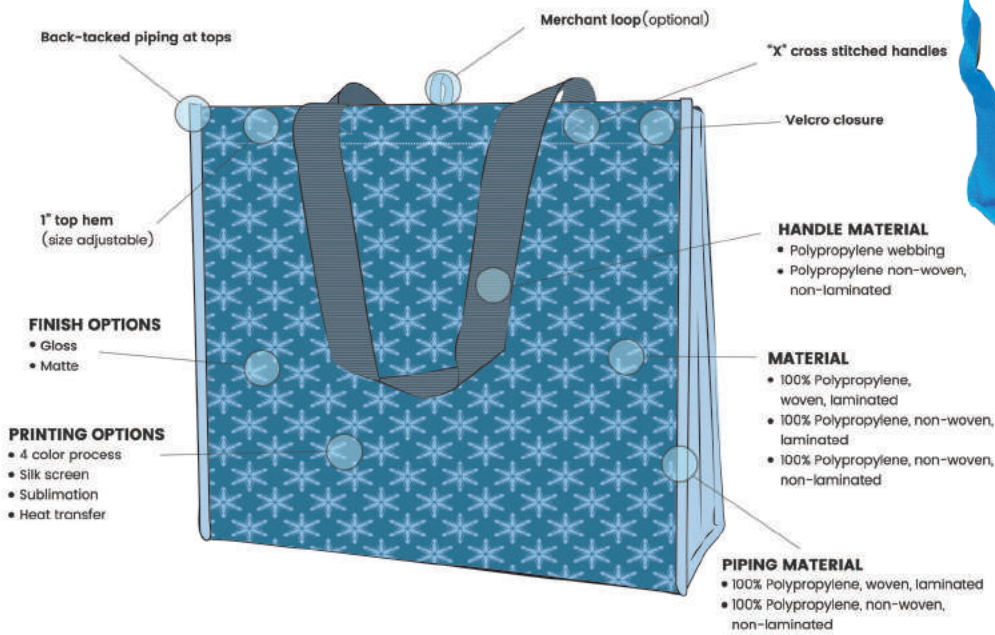
BASIC VELCRO THERMAL BAGS

Lined with metalized lining these Basic Velcro Thermal Bags help keep food warm or cool for hours.

A great product to bring food home from the grocery store, or to your next family get-together.



Metalized lining



ITEM# GEB15138/ALF



ITEM# GEB15138/CRHC



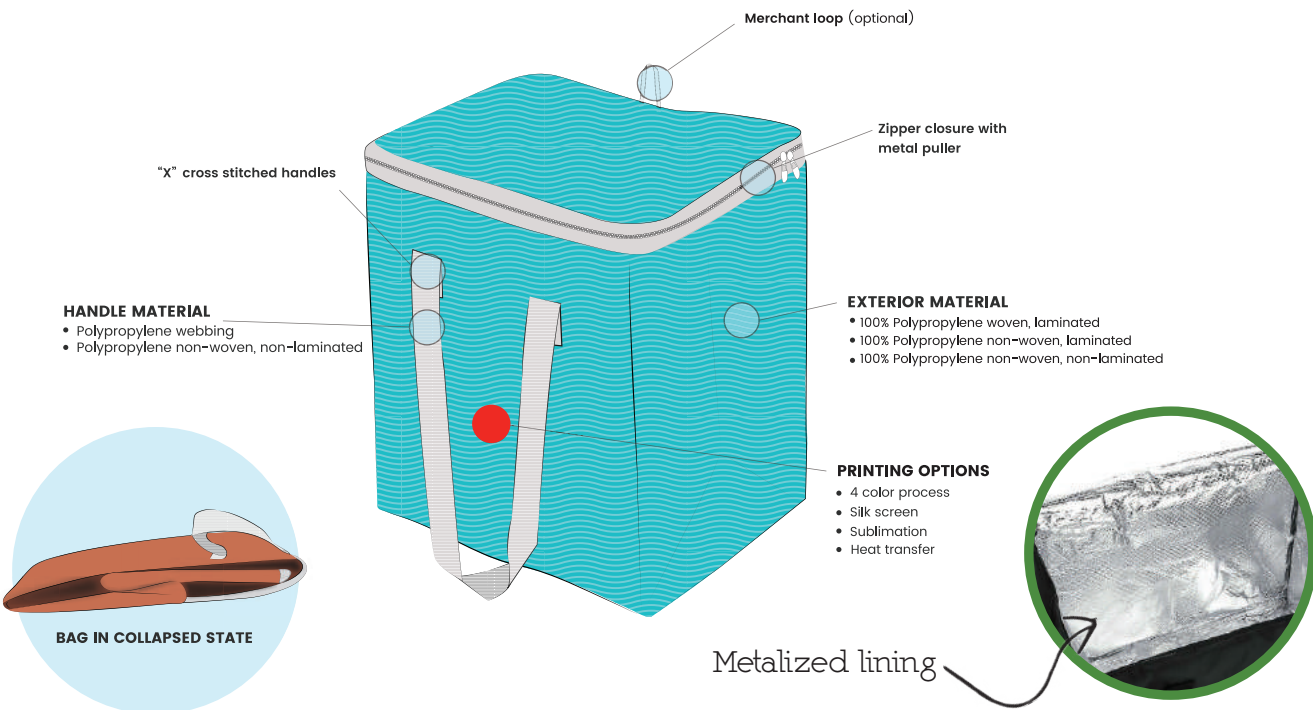
ITEM# GEB15138/KIC



ITEM# GEB15138/VHC



BASIC ZIPPER THERMAL CUBE



ITEM# GEB12138/KHC



ITEM# GEB12138/RP



ITEM# GEB12138/STR



ITEM# GEB12138/KFI



POLYESTER THERMAL CUBE

Our upscale insulated Cube Bag is designed with durable polyester material and an adjustable cross-body strap.

The interior layer of EPE foam and leak-proof lining ensures that items packed within this bag remain warm or cool for hours. The exterior front pocket is an optional feature that allows for extra storage.

This bag, which comes in a variety of colors and patterns, can be branded with a custom embroidered or silk screen print logo.



ITEM# GEB12128/PLO



ITEM# GEB12128/DB

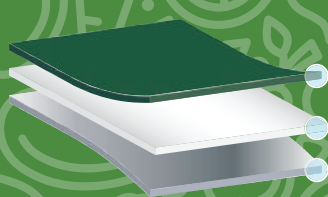


ITEM# GEB12128/BC



ITEM# GEB12128/LGR

MATERIAL CONSTRUCTION OPTIONS



OPTION 1

- 100% Polyester
- EPE Foam
- Metalized Lining



OPTION 2

- 100% Polyester
- EPE Foam
- PVC Lining



POLYESTER THERMAL TOTE



ITEM# GEB21146/RDT



ITEM# GEB21146/GRT



ITEM# GEB21146/BRT



POLYESTER JUMBO COOLER

Designed to carry a lot of stuff! Our over-the-shoulder Jumbo Insulated Tote is made with durable polyester material. The interior layer of EPE foam and leak-proof lining ensures that items packed within this bag remain warm or cool for hours. The exterior front pocket is an optional feature that allows for extra storage.

This bag, which comes in a variety of colors and patterns, can be branded with a custom embroidered or silk screen print logo.



ITEM# GEB24166/XLGB



ITEM# GEB24166/XLLB



ITEM# GEB24166/XLMR



ITEM# GEB24166/XLRB



ITEM# GEB24166/XLWM



ITEM# GEB24166/XLPA



ITEM# GEB24166/XLAM



NATURAL FIBER JUTE & JUCO BAGS

Made from natural fibers, our Market Tote bags are printed with eco-friendly ink, fashioned with over the shoulder straps and a laminated lined interior for better hygiene and easy wipe down. They make a great everyday tote for a trip to the grocery store or farmer's market.



Handle Material

- Cotton webbing - Standard
- Cotton webbing - Rounded (as seen here)

"X" cross stitched handles

PRINTING OPTIONS

- Sublimation
- Silk screen

1" top hem (adjustable)

MATERIAL

- 100% Jute
- Juco (75% Jute, 25% Cotton)

Polytab logo (optional)

SMALL BAGS

LARGE BAGS



ITEM# GEB13156/TL



ITEM# GEB13156/WE



ITEM# GEB15127/BO



ITEM# GEB15127/PT



REUSABLE WINE BAGS

Perfect for a celebration! Made of polypropylene, our Reusable Wine Bags come in a variety of sizes for 1, two, four and even six bottles. Lined with a silk screen, all your beverages stay nice and secure



ITEM# GEB1444/PFZ



ITEM# GEB1444/CAM



ITEM# GEB1444/DOT



ITEM# GEB1444/SPR



ITEM# GEB1174/FE



ITEM# GEB1174/PCH



ITEM# GEB1174/DWF



ITEM# GEB1174/ACI



ITEM# GEB1187/WE



ITEM# GEB1187/FGW



ITEM# GEB1187/COR



ITEM# GEB1187/ENJ



REUSABLE WINE BAGS

INTERIOR PARTITION

- 2 bottles
- 4 bottles
- 6 bottles (as seen here)

Back-tacked piping at tops

PRINTING OPTIONS

- Silk screen (basic only)
- Paste print (basic only)
- 4 color process

Sewn-in Insert (optional)

- Cardboard
- PE board

"X" cross stitched handles

INTERIOR PARTITION MATERIAL

- 100% Polypropylene, non-woven, non-laminated

EXTERIOR MATERIAL

- 100% Polypropylene, woven, laminated
- 100% Polypropylene, non-woven, laminated
- 100% Polypropylene, non-woven, non-laminated (basic)

HANDLE MATERIAL

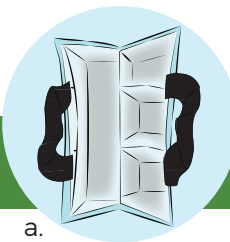
- Polypropylene webbing
- 100% Polypropylene, non-woven, non-laminated

PIPING MATERIAL

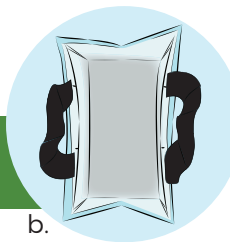
- 100% Polypropylene, woven, laminated
- 100% Polypropylene, non-woven, laminated
- 100% Polypropylene, non-woven, non-laminated

MOVABLE INTERIOR PARTITION (optional)

- One partition pushed to the side
- Both partitions pushed to the side



a.



b.

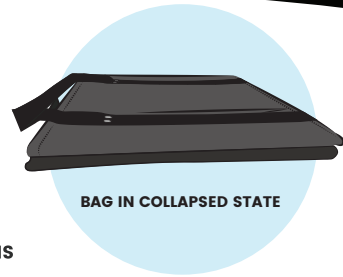


6 BOTTLE



REUSABLE GROCERY BOX

Our Eco Box is designed with reinforced handles, as well as side handles for easy carrying. Sewn-in boards provide added structure and product durability. The interior flap lifts up, allowing the product to collapse for easy storage when not in use. This heavy duty Eco Box is perfect for both shopping and storage.



BAG IN COLLAPSED STATE

HANDLE MATERIAL

- Polypropylene webbing
- Polypropylene, non-woven, non-laminated

INTERIOR MATERIAL

- 100% Polypropylene, woven, laminated (recommended for easy wipe down)
- 100% Polypropylene, non-woven, laminated (recommended for easy wipe down)
- 100% Polypropylene, non-woven, non-laminated

PRINTING OPTIONS

- 4 color process
- Silk screen
- Paste print (cost effective option; 1 simple logo)

Side handles (tucked in at edges)

"X" cross stitched handles
• Metal buttons (optional)

SEWN-IN BOARD OPTIONS

- PE board
- Cardboard

EXTERIOR MATERIAL OPTIONS

- 100% Polypropylene, woven, laminated
- 100% Polypropylene, non-woven, laminated
- 100% Polypropylene, non-woven, non-laminated

Reinforced handles (optional)

LAMINATED OPTION

NON-LAMINATED OPTION



ITEM# GEB141110/PIN



ITEM# GEB141110/GEO



ITEM# GEB141110/GL

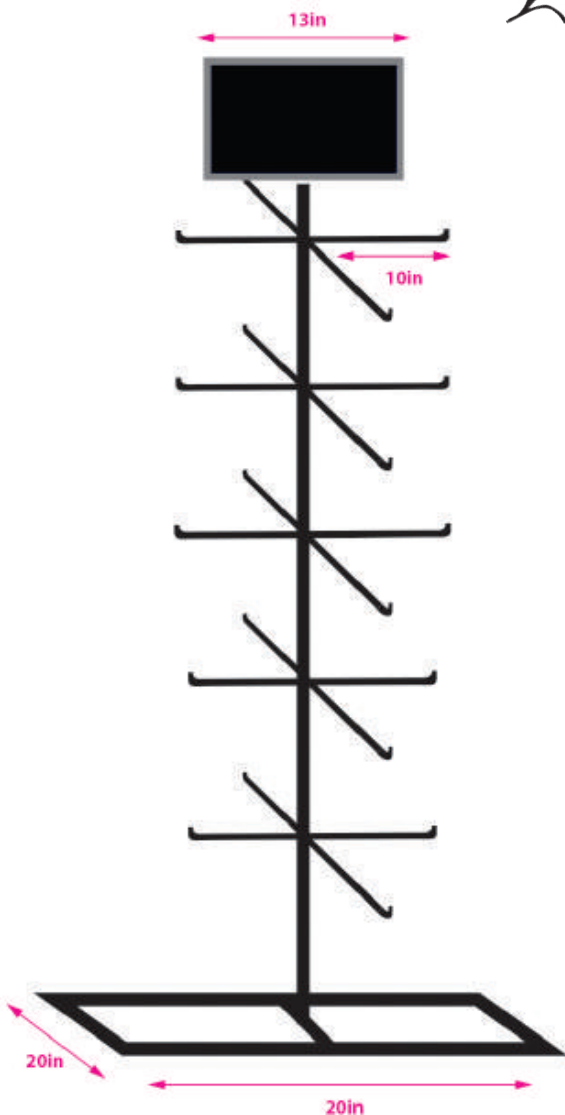


ITEM# GEB141110/BP



MERCHANDISING

Sign slides into metal frame



Metal display

PDO displays

Great product visibility for inline shelving display.



MERCHANDISING

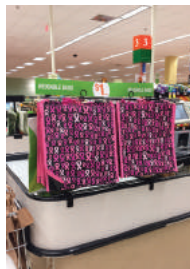
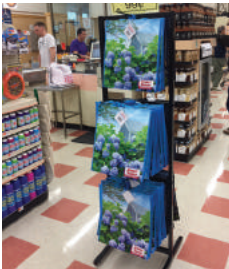


Corrugated display

Perfect for in-and-out seasonal styles.



See What Our Customers Are Doing...





FAQ

What is the minimum order quantity for custom bags?

Our MOQ for custom orders is 5,000pcs.

How can I obtain a quote?

Once the bag specifications (product dimensions, material, finish) are confirmed, our team will supply you with a quote within 48hrs.

How much does shipping cost?

All projects are quoted with shipping rates included in the unit cost. There are no hidden fees on top of our agreed pricing unless of exceptional circumstances, e.g. having to air ship goods at the request of the client.

How long will my order take to arrive?

Once an order is confirmed we require 75 days to produce and deliver the order directly to your door.

Do you have any in-stock options?

We do carry several seasonal and everyday style bags in our warehouses.

These stock items are non-branded and sold by the case.

When a new order is received, we require 2-5 business days to deliver the product to your door.

How can I get a sample of one of your products?

Feel free to email or phone us to discuss a new project and we will tailor a sample pack to be sent off to you.

Where are your products made?

The majority of our bags are made in China, Vietnam and India.

We also work with US and Canadian-based suppliers.

What is the amount of recycled material in your bags?

Depending on the material, the recycled content of our bags ranges from 25% - 85%.

Where can you ship to?

We ship direct worldwide. However we do not ship to P.O box addresses.

What file type is preferred to submit my own artwork?

Any files over 10MB should be submitted via Dropbox or WeTransfer.

Files should be in EPS, AI or PSD in versions CS3 or higher.

All fonts must be embedded.

Photo quality should be a minimum 300 DPI at 100% and links should be supplied in separate files.

Can you do full colour logo picture reproductions?

We have a creative team that we allow our clients to use free of charge.

We recommend a maximum of 6 colors when setting up your artwork layouts.

Do your bags have lead content?

Every one of our orders is sent to a third party facility and tested to ensure that each of our bags meets country required regulations.



REDUCE
REUSE
RECYCLE

Green Earth Bag™ offers stylish and practical solutions to combat the problem of disposable single-use plastic bags.

By offering your customers a Green Earth Bag™, you'll be making a positive contribution to the environment that we all share.

5800 Rue Kieran,
Saint-Laurent, QC H4S 2B5,
CANADA

Toll Free: 1 877-694-9440
Tel.: (514) 336-8780

Web site: www.fiberlinks.com

E-mail: info@fiberlinks.com
geb@fiberlinks.com

©Fiberlinks Textiles Inc. 2024

