

# Contractor Product Book



# Laminated Columns



- Engineered
- Finger Joined
- Nailed & Glued
- Planed on one side
- .60 CCA Treatment
- 60 Year Rot  
Warranty



We only use Prime  
Framing Lumber





# Our Steel

100% American Made

.0153 Thickness

Sherwin Williams

WeatherXL

40 year coating

**Panel Coil- Grade E minimum 82,000 psi**  
**Harder to give the panel extra strength**

**Trim Coil- Grade D minimum 70,000 psi**  
**Softer to ensure the paint does not crack when bending**



**All major trim pieces are Roll Formed to ensure the perfect piece every time!**





**Press Brake for Special Bend Trims to meet  
any need up to 12'6" in length.**











# MIDWEST METALS

ALL AMERICAN STEEL



**Brown**



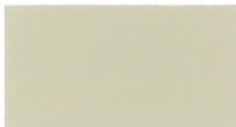
**Tan**



**Ash Gray**



**Charcoal**



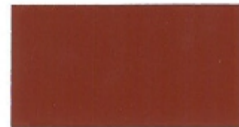
**Light Stone**



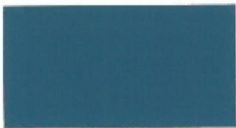
**Hunter Green**



**Alamo White**



**Rustic Red**



**Ocean Blue**



**Brilliant White**



**Burgundy**



**Taupe**



**Burnished Slate**



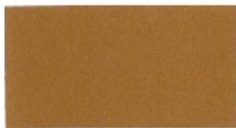
**Gallery Blue**



**Brite Red**



**Dark Green**



**Copper Metallic**



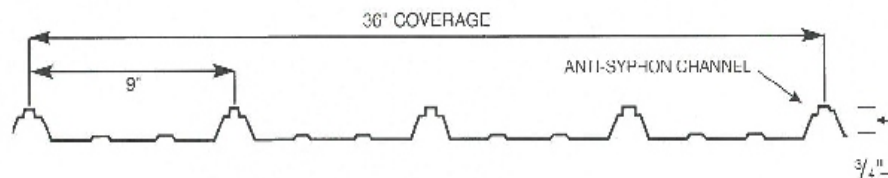
**Ivory**



**Matte Black**



**Pewter Gray**



**SHERWIN-WILLIAMS.**  
Coil Coatings



**UNITED**  
STEEL SUPPLY

Colors shown may vary slightly from actual paint.



**Standard Fasteners included with every package.**



**Over 100 Years of Experience**

## #10 WoodTite

Combining the elements of the Type-17 point and specialized hybrid threads allows for the New #10 WoodTite to penetrate the metal panel, hard woods, and knots easier allowing for quicker installation.

**Atlas' newest innovation - the #10 WoodTite Fastener features the following:**

- Innovative hybrid threads to cut through hard woods and knots
- Self tapping type-17 point, to help remove pigtails
- Nonconductive washer

**#10 WoodTite™**



Diameter: #10  
Threads per In.: 14  
Length: 1", 1½", 2", 2½", 3"  
Point: Type-17  
Material: Carbon Steel  
Coating: Oxyseal

## Engineering Test Report

Fastener Diameter	Minimum Torsional	Minimum Tensile	Minimum Shear
#10	68 In. lbs.	2,100 lbs.	1,265 lbs.

## Pull Out Values



TEST MATERIAL	PENETRATION	RESULTS
S-P-F #2	1"	535 lbs.
S-P-F #2	1-1/2"	925 lbs.
5/8" OSB	Full	243 lbs.
5/8" CDX	Full	461 lbs.

Note: Pull-out values are a measurement of wood material strength. Actual field values may vary.

Recommended Screw Gun Speed: 2,500 rpm maximum.

CAUTION: Stripped threads may cause delayed failures resulting in costly leaks.

NO IMPACT OR HAMMER DRILLS TO BE USED FOR INSTALLATION.

DISCLAIMER: All test results and recommendations are based on laboratory tests.

Specific job site conditions should be taken into consideration when specifying the proper fastener. Because applications may vary, we assume no liability for use of this information.



**www.atlasfasteners.com**

1628 Troy Road • Ashland, Ohio, 44805  
T: 419-289-6171 • F: 419-289-2564

**800-321-6977**

## SALES AND SERVICE CENTERS

Ashland, Ohio  
1-800-321-6977

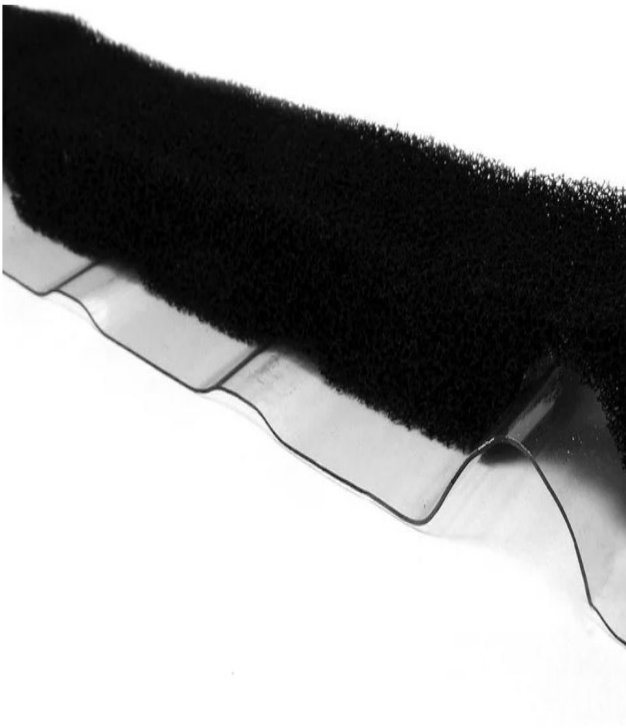
Fiat Rock, NC  
1-800-364-0370

Houston, TX  
1-800-503-2105

Salem, OR  
1-800-547-8740

## Standard Ridge Vent

### UNI-VENT PRO-SERIES



- Easy to install; 20' per roll
- Use any manufacturers ridge cap
- Withstands 100 mph wind-driven rain
- Use on any roof pitch from 2/12 to 20/12
- Material is 2" wide with standard thickness of 1"
- Standard 9" oc profile matches the roofing profile
- Same great performance as Uni-Vent II

#### Physical Properties:

- UV Stabilized/Fire Retardant
- Continuous Double Glue Strip
- Pure Polyurethane Foam
- Vinyl Coating

## Additional Vent & Closure Options



### FLEXPRO

**BETTER**

Marco's newest innovation: a profile-cut stick or roll product designed to fit most roof panels.

- Won't absorb moisture, which can freeze and block all ventilation
- 2 beads of M63 Marco proprietary adhesive for superior hold
- Easy, one-person installation
- 40 year limited warranty
- ASTM testing: D1929, D737
- Available in box or roll quantities

**FLEXPRO**

Marco's new FlexPro offers a balanced combination of outstanding features from our superior LP2 and economical Flex-O-Vent products. Made with Marco's unique polyester fiber, FlexPro delivers durable, long-lasting performance.

#### Specs

**Net Free Area:** FlexPro Panel Fit - 1-1/8" free-standing product, NFA 26 sq. in.\*

**Available In:** 3' stick, 20' and 50' rolls

**Air Permeability:** >800 cubic feet per minute

**Tear Strength:** 3.5 ppi

**Tensile Strength:** 16 psi – Elongation 175%

**Compressive Strength:** 1.8 psi at 75%

\*Effective Net Free Area varies based on product height, panel profile, and installation methods.



### LP2 RIDGE VENT

**BEST**

Our premier custom-cut vent strip includes Python™ polyester vent material inserts for a snug fit and optimum ventilation at a cost lower than traditional fans and louvers.

- Custom-cut profiles for snug fit
- Superior net-free ventilation reduces condensation
- 2 beads of M63 Marco proprietary adhesive for superior hold
- Easy, one-person installation
- Moisture and pest barrier
- 40 year limited warranty
- Non-obtrusive appearance
- Helps reduce utility costs
- ASTM testing: D1929, D737, D1294-86, D2261-83\*\*
- Box quantity packaging



Our patented LP2 Ridge Vent is made from non-fabric-covered Python vent material. This durable, modified polyester is a non-woven, non-wicking, fiber-based matting. Its specially cut contours provide a custom, low-profile fit for any pitch and most major metal roof profiles. LP2 provides a superior net-free ventilation area that helps keep out moisture, pests and dust. Plus, LP2 can be installed by just one person in two easy steps. In fact, the screw bed and industrial strength peel-and-stick adhesive pre-applied to LP2 makes this one of the easiest installations imaginable.

#### Specs\*\*

**Net-Free Area:** Varies with profile based on 17 square inches per linear foot of ventilation material

**Dimensions:** Varies with profile

**Air Permeability:** >760 cubic feet per minute

**Cold Cracking:** -25° F

**Tear Strength:** Machine 25 ppi / Counter 25 ppi

**Compressive Strength:** 1.8 psi at 75%

**Rain:** No leakage



If our 60 year column warranty is not enough to ease your mind, add post protectors to every column for a lifetime warranty.

# **POST<sup>TM</sup>** **protector**

**1-877-WONT-ROT** US Patent



## **In Ground Post Protection**

So, how do you help guarantee that your structure will serve as a landmark for years to come? How can you protect your wood post foundation from falling victim to decay? Two words. Post Protector.<sup>TM</sup>


We've got you covered. Post Protector<sup>TM</sup> combines strength, durability, and the kind of tough exterior that's going to deliver the long-lasting performance you demand.

Post-frame construction has permeated every facet of American life. You could even say it's fast becoming "The American Way." And Post Protector<sup>TM</sup> is right there to back it up.

Build water tight and so secure the bugs can't bite. Go with the one name that's revolutionizing post-frame construction. Post Protector.<sup>TM</sup> Quality is our strength.



**No plans to insulate and regulate temperature inside your building? Add Drip Stop to control condensation and keep it from dripping on your valuable possessions!**



**DripStop**  
Condensation control

**DripStop Has Become the World's Best-Selling Condensation Control Product By Being a Faster, Cheaper & More Durable Solution.**

**Helps Fight Corrosion**  
Tests have shown that it adds another layer of protection specifically from the corrosive elements in livestock confinement.

**Helps Fight Injury on the Job site**  
Reduces risk of falling while walking on top of insulation on the roof frame. Cutting the time on the roof by up to half means less risk to you and your workers.

**Durable**  
Very difficult to cut or slice through, which makes it ideal for self-storage applications

**Fight Condensation Without Insulation**  
Don't Go To The Time And Expense Of Laying Down Insulation And Vapor Barrier When You Are Just Trying To Stop Condensation

**Hope to someday add additional insulation into your building,  
but just want to take the edge off now?**

**Solex LT is a great reflective option and works nicely to spray foam  
against which will protect your steel from the spray foam.**

# SolexLT

## REFLECTIVE INSULATION & VAPOR BARRIER

Clean Appearance



Flexible Rolls

### PRODUCT DESCRIPTION

SolexLT Reflective/White Woven Insulation is engineered to increase energy efficiency, provide a clean, finished appearance, and simplify installation for all residential, post frame, light-gauge steel, and commercial insulation applications.

The core of the product is made of a solid layer of flexible foam that provides excellent insulation characteristics in a moisture proof design. The facing combinations are thermally bonded in a unique process that provides a long-term quality finish. In addition, our patented self-taping flange speeds up installation and eliminates the need for excess tape.

### FEATURES & BENEFITS

- Reflects up to 94% of radiant energy
- Non-toxic lightweight rolls
- Durable construction and long-lasting toughness
- Excellent vapor barrier
- Easy installation with utility knife and tape
- Bird and insect resistant
- Increases system thermal performance
- Use in retrofit or new construction

### PRODUCT USE

SolexLT Products can be used for new construction as well as retrofit in a variety of applications, such as post frame, horse, dairy or livestock buildings as well as for finished walls, building insulation, condensation control, and as a thermal break and vapor barrier. SolexLT can be perforated for applications where a vapor barrier is not needed such as behind siding or in an attic.

### APPLICATIONS

- Post Frame
- Metal Frame
- Metal Roofs
- Agricultural
- Residential
- Retrofit
- Light-gauge steel
- Workshops
- House Wrap
- Attics

### ROLL SIZES

- 4' x 125' (500 sqft)
- 4' x 250' (1000 sqft)



Reflective combined with fiberglass.

# SOL-RECLIPSE

## POST FRAME INSULATION



PREMIUM REFLECTIVE INSULATION



## SOL-R-ECLIPSE PERFORMANCE ADVANTAGE

In 2012 Sol-R-Eclipse was installed in a distribution warehouse 60,000 square foot addition. The existing 60,000 square foot building had been insulated with a plastic core reflective insulation one year earlier. The thermal imaging was performed in July 15, 2013 at 11:00 am. The ambient temperature was 88°F.

SOL-R-ECLIPSE



PLASTIC CORE



## THERMAL AND FIRE DATA

### SOL-R-ECLIPSE FOIL/FOIL

Physical Properties	Values	Test Method
Flame Spread	20	ASTM E 84-10a
Smoke Developed	10	ASTM E 84-10a
Full Scale Corner Room	PASS	UL 1715/UBC 26-3
<b>Thermal Performance</b>		ASTM C1363/C1224
Heat Flow Down	R 12.82	
Heat Flow Up	R 9.24	
Heat Flow Horizontal	R 10.60	

### SOL-R-ECLIPSE WHITE/FOIL

Physical Properties	Values	Test Method
Flame Spread	20	ASTM E 84-10a
Smoke Developed	10	ASTM E 84-10a
Full Scale Corner Room	PASS	UL 1715/UBC 26-3
<b>Thermal Performance</b>		ASTM C1363/C1224
Heat Flow Down	R 10.70	
Heat Flow Up	R 8.56	
Heat Flow Horizontal	R 9.45	



Open to extraordinary.

## *9 Lite Entry Door*

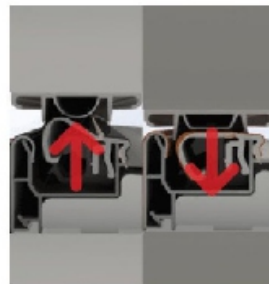
### **Belleville Smooth 2 Panel 9-Lite Simulated Divided Lite with Glass**

The Belleville® Fiberglass Door Collection combines superior beauty and architectural design with Maximum flexibility. Belleville doors have a high-definition panel profile.

**BELLEVILLE.**  
THE ORIGINAL FIBERGLASS



- Fiberglass Masonite door slab (equivalent to 16ga. steel)
- Energy saving polyurethane door core
- Ideal for painting and will not rust or dent like steel doors
- High definition embossed profile adds architectural interest & elegance
- Schlage hardware with dead bolt standard
- Reinforced door jams
- FrameSaver, the original rot-proof wood frame solution
- Self adjusting sill



**No Adjustments.**

Z-AC never needs adjustment, automatically adjusting for a lasting seal against leaks.

No maintenance required.



**Builders Demand FrameSaver®**







Open to extraordinary™

## *6 Panel Entry Door*

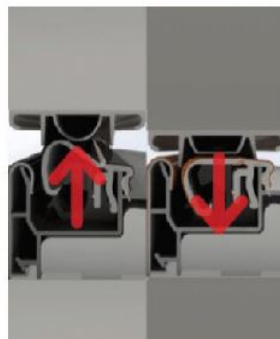
### Belleville Smooth 6 Panel Door with No Glass

The Belleville® Fiberglass Door Collection combines superior beauty and architectural design with Maximum flexibility. Belleville doors have a high-definition panel profile.

**BELLEVILLE.**  
THE ORIGINAL FIBERGLASS



- Fiberglass Masonite door slab (equivalent to 16ga. steel)
- Energy saving polyurethane door core
- Ideal for painting and will not rust or dent like steel doors
- High definition embossed profile adds architectural interest & elegance
- Schlage hardware with dead bolt standard
- Reinforced door jams
- FrameSaver, the original rot-proof wood frame solution
- Self adjusting sill



**No Adjustments.**

Z-AC never needs adjustment, automatically adjusting for a lasting seal against leaks.

No maintenance required.



**Builders Demand FrameSaver®**





# MASONITE®

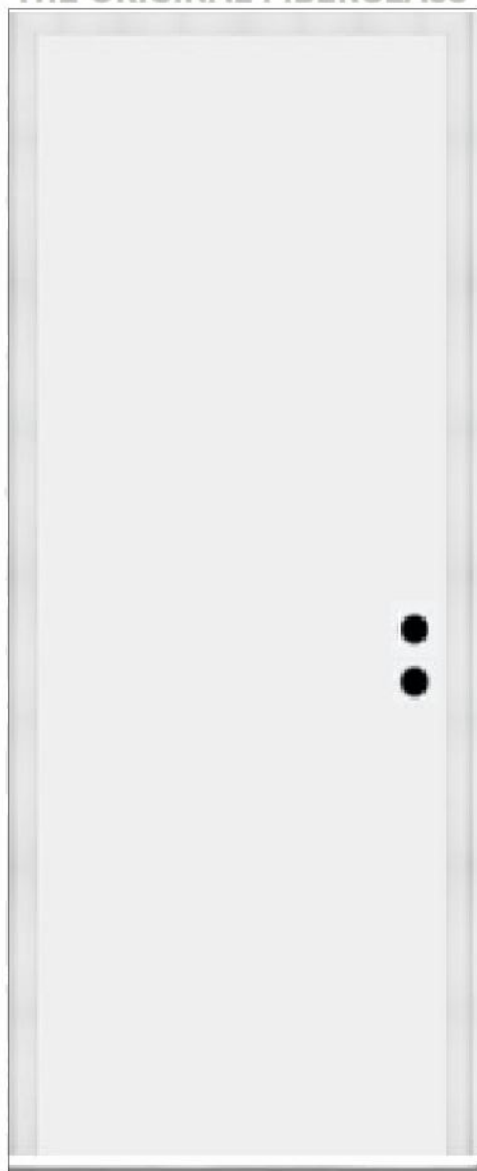
Open to extraordinary.

## *Flush Face Entry Door*

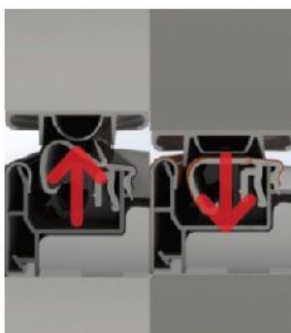
### Belleville Smooth Flush Door with No Glass

The Belleville® Fiberglass Door Collection combines superior beauty and architectural design with Maximum flexibility. Belleville doors have a high-definition panel profile.

**BELLEVILLE.**  
THE ORIGINAL FIBERGLASS



- Fiberglass Masonite door slab (equivalent to 16ga. steel)
- Energy saving polyurethane door core
- Ideal for painting and will not rust or dent like steel doors
- High definition embossed profile adds architectural interest & elegance
- Schlage hardware with dead bolt standard
- Reinforced door jams
- FrameSaver, the original rot-proof wood frame solution
- Self adjusting sill



**No Adjustments.**

Z-AC never needs adjustment, automatically adjusting for a lasting seal against leaks.

No maintenance required.



**Builders Demand FrameSaver®**



## PLYCO Series 20 Insulated Door

The Plyco 20 Series pre-hung door with universal swing feature is the one door that's right for the job — the whole job. We have incorporated:

- Full rolled edge 24 gauge steel panel, 1 3/4" thick
- Universal swing feature, and is fully reversible in the 3 1/2" thick jamb
- 16 gauge jamb and panel are galvanized steel
- Stainless steel hinges are standard
- Q-Lon weather stripping on jamb allows for greater leak protection

- Jamb is tooled for hinge and strike mortise, and all jamb mounting holes are counter sunk to allow smooth surface installation
- Composite lock block and deadbolt prep are standard
- Lock strike plate is adjustable
- Handicap threshold is optional
- Passes all IBC code tests
- Standard sizes are 2668, 2868, 3068, 3668, 3070 and 3670
- Also available are 4068 & 4070 with 24 gauge steel panels





# PLYCO

CORPORATION

PO BOX 386 • ELKHART LAKE, WI 53020

## SERIES 95EV UTILITY DOORS

**SERIES 95EV**  
UTILITY DOORS

- *Low Maintenance*
- *Easy Installation*
- *Economy*
- *Energy Saving*



- *Rolled Edge*
- *Durable and Attractive*
- *4 Way Universal*
- *Single Piece 16 ga Jamb*

# Insulated Single Hung- Flashing Needed

## Brickmould Series



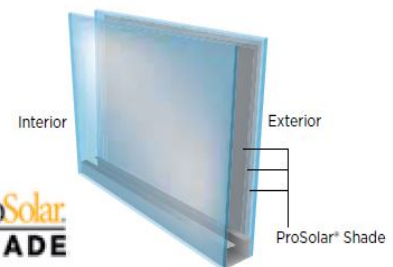
ProFinish® Brickmould 300 windows can be ordered to meet ENERGY STAR® guidelines.

### Single Hung

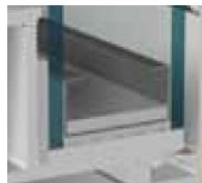


- A Integral Brickmould/J-channel** For the ultimate jobsite versatility, an integral brickmould serves double duty and also functions as a J-channel so it can be used in multiple applications, including brick and vinyl.
- B Integral Nailing Fin** An integrated nailing fin makes accurate installation easier and more efficient.
- C Fusion-welded Frame and Sash** The one-piece strength of the fusion-welded frame and sash makes for greater rigidity and easier handling.
- D Multi-tiered Exterior** A stepped design has a classic, chiseled appearance that complements both brick and siding exteriors.
- E Sloped Sill Design** A special sill design initiates quick water drainage.
- F Sill Dam Weatherstripping** Additional weatherstripping serves as an effective weather barrier.
- G Premium Vinyl Profiles** Remarkably strong vinyl is easy to handle, will retain its low-maintenance beauty for years and provides excellent thermal performance.
- H 3/4" Insulating Glass Unit** The insulating glass unit provides increased thermal performance.
- I ProSolar® Low E Glass with an Argon Gas Fill** This advanced glass package, optional on Brickmould 300 series, delivers impressive thermal efficiency and interior comfort.
- J Overlapping, Interlocking Meeting Rail** The meeting rail both overlaps and interlocks the sash, making the window virtually impervious to weather infiltration.

**ProSolar® Shade** is an advanced, spectrally selective glass that features three layers of silver for maximum insulation. This impressive glass offers the ultimate in solar heat control, fading protection, visibility and energy savings.



Simonton ProFinish® Brickmould 300 windows feature a transferrable Lifetime Limited Warranty for complete homeowner confidence.



The **Intercept® spacer system**, standard on Brickmould 300 windows, features a unique U-channel design that minimizes condensation and keeps glass surfaces warmer for increased efficiency and comfort. The U-shape design flexes and contracts, helping to reduce seal failure in the insulating glass unit.



For even greater thermal performance and dependability, the optional **Supercept™** spacer combines a U-channel design with the strength of a stainless steel alloy.



**Self flashing window. No trim needed**

**PLYCO**  
CORPORATION  
PO BOX 386 • ELKHART LAKE, WI 53020

## CTB500 Series COMMERCIAL WINDOWS

**CTB500**  
COMMERCIAL WINDOWS

### CTB500 Series

- More durable and stronger than vinyl
- Hard Baked on Finish for years of performance
- Easy Installation
- Polar White, Hickory Moss, Bronze & Brown
- Optional Built-in "Step Saver" Trim, fully extruded frame for added strength

**PLYCO CORPORATION**  
USA  
800/558-5895  
FAX: 800/257-5926  
INTERNATIONAL  
920/876-3611  
FAX: 920/876-3527  
[www.plyco.com](http://www.plyco.com)

**Overhead Doors by C.H.I**  
**More info at [chiohd.com](http://chiohd.com)**

[GARAGE DOORS](#)[COMMERCIAL DOORS](#)[BUILD A DOOR](#)[HELP & SUPPORT](#)



# Residential Garage Doors

Whether you prefer the traditional Garage Door or are more contemporary, we've got you covered. Look through our entire line of residential garage doors to find the one you want to take home.

[VIEW RESIDENTIAL DOORS](#)

3 OF 5 [←](#) [→](#)



## Sliding Doors with 3.5" Metal or Wood Girts

### BIGG FRAME® SLIDING DOOR SYSTEM

#### Sturdy, durable solution for larger sliding doors

Designed to work together as a complete system, Bigg Frame Sliding Door components provide an easy, standard assembly for sliding door panels up to 20'x20' in size. Ideal for panels **larger than** 144 square feet, the Bigg Frame System is a durable solution for high-wind locations or large-scale doors.

#### FEATURES:

- The Bigg Frame System is ideal for large door panels over 144 square feet – offering a standardized construction, fewer components and easy assembly.
- Designed for buildings with roll-formed steel siding, Bigg Frame removes the guesswork and labor associated with field-fabricated doors.
- The versatile system design allows for adaptation into a wide assortment of special applications including bypass, split-slider and multi-panel doors.
- All exterior components come with a powder coat finish (color matching available) for a durable, quality appearance that will outlast paint under all weather conditions.
- Most standardized components and options are quick ship items – providing needed parts in days (not weeks) and lowering overall inventory levels.
- The wider sizing of the Bigg Frame System -- when paired with available 235 steel girts -- provides each door panel greater durability and increased wind resistance. NOTE: This system is NOT recommended for wood horizontals.



#### 391 Side Rail

##### Sturdy & durable sliding door panel edges

Designed specifically for larger door panels, Bigg Frame's 391 Side Rails offer self-flashing J-channels to enclose steel door skins for a trouble-free hold and easy installation.

#### FEATURES:

- Sturdy, rust-free aluminum materials offer long-lasting functionality, finished looks and quick assembly.
- Side rail profile wraps and conceals all exposed steel edges, giving the panel a smooth look that won't cut or scratch.
- An optional vinyl weather seal can easily slide into the built-in T-slot for quick, easy weather sealing.



#### 396 Double Couple (H-rail)

##### Conceals and seals sliding door panel gap

Larger sliding doors demand strong connections to keep out the elements – and the Bigg Frame 396 Double Couple handles the job with greater stability than standard H-rails.

#### FEATURES:

- The Double Couple is designed to replace one side rail -- aligning both sliding door panels together when the door is closed.
- H-rail functionality wraps the edge of the joining door panel for a sturdy connection, increased unit durability and added sliding door system longevity.
- A built-in, self-flashing J-channel offers easy installation of the door panel skin.



#### 394 Bottom Rail

##### Robust sliding door component with weather sealing ability

Designed to accommodate a continuous guide rail, the 394 Bottom Rail delivers increased wind resistance and diminished sliding door sway during use.

#### FEATURES:

- When used in conjunction with a continuous guide rail, the 394 Bottom Rail offers ease of use and protection of building siding.
- Two built-in channels within the rail allow for the use of an optional vinyl or brush seal to keep out dust, dirt, rain and snow.

## VERSATILE / UTILITY ROUND TRACK

# TRACK & TROLLEY SYSTEMS

### Recommended Use

	<b>Agriculture</b>	
	<b>Commercial</b>	
	<b>Metal</b>	



## KEYHOLE® TRACK

Adaptable design for the widest variety of doors

CannonBall's Keyhole track offers versatility, strength and ease of use. This adaptable track style can be used with any sliding door variety or bracket type – and installs with a simple connection of brackets into keyholes before mounting.

### FEATURES:

- Keyhole Track can be utilized in both wood and metal frame construction for commercial, agriculture and metal building projects.
- Flexibility in design is matched with a wide assortment of compatible brackets – providing configurations for numerous building applications.
- When paired with available Delrin wheel trolleys, Keyhole Track can manage sliding doors weighing up to 600 pounds.
- Choose from a variety of bracket styles to accommodate track cover additions on doors up to 2-1/2" thick.
- Cylindrical design allows for self-cleaning and aligning with every use, positioning trolleys in the track's center and pushing away any dirt or debris build-up.
- Keyhole track is offered in a variety of standard lengths (2-foot increments) for ease of order and total inventory reduction.



## DELRIN PENDANT BOLT TROLLEYS

Stability, functionality and a smooth roll

With superior materials and multidirectional adjustment, Delrin Pendant Bolt Trolleys are hard-wearing in use and flexible in mounting. This durable trolley variety, when used in pairs, holds door panels weighing up to 600-pounds – while still offering the smoothest roll around.

### FEATURES:

- The Delrin wheel material provides rust-free hardness, long-lasting functionality and ease of use.
- Offset Pendant Bolt Trolley varieties can be adjusted four ways (up, down, in & out) for adaptable installation of both wood and metal framed door panels.
- While comparable steel wheel designs max out their loads at 450 pounds per pair, Delrin Trolley pairs can handle door projects up to 600 pounds.
- CannonBall offers the Pendant Bolt in a variety of lengths to meet your project's vertical adjustment needs.



**New RED  
ROLLERS  
on popular  
models!**

**Stall systems by MWI Components.**  
**More info at [mwicomponents.com](http://mwicomponents.com)**

# HORSE STALLS

Our Horse Stalls are completely customizable, for your exact needs

From the length of the grill to the exact custom powder coat, everything is done in-house to ensure your horse stall is exactly what you've been looking for

**STALL DOORS**

**GRILLS**

**HARDWARE**



# Handcrafted Cupolas- All Steel- Color Matched

## Cupolas



### Square

#### Louvered Sidewalls

Item #		Dimensions
Open Base	Closed Base	
CUP18	CUPNV18	18" X 18"
CUP24	CUPNV24	24" X 24"
CUP30	CUPNV30	30" X 30"
CUP36	CUPNV36	36" X 36"
CUP48	CUPNV48	48" X 48"
CUP72	CUPNV72	72" X 72"



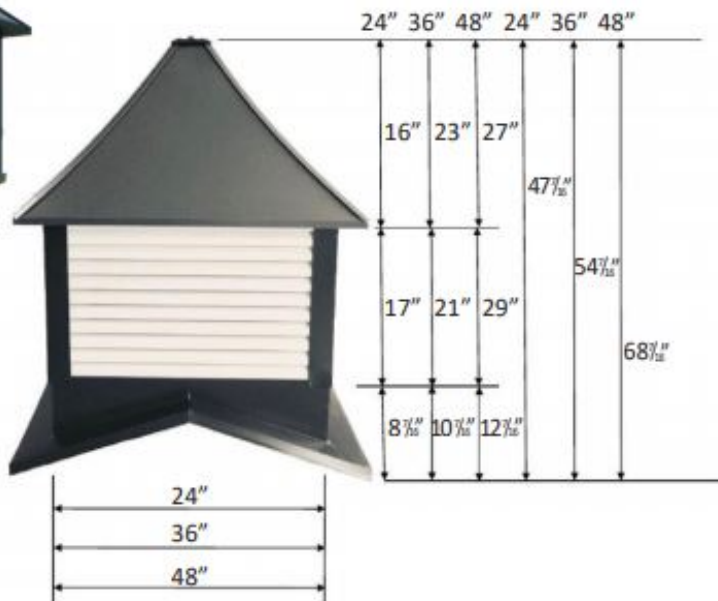
### Square

#### Lited Sidewalls

Item #	Dimensions
CUPW24	24" X 24"
CUPW30	30" X 30"
CUPW36	36" X 36"
CUPW48	48" X 48"
CUPW72	72" X 72"



Cupola dimensions are based on 24", 36" and 48" models, all with a 4/12 pitch. Other cupola sizes and pitches will have different measurements. Contact us for further information.



## Ridge Vents



### VR280 SERIES

Item #	Description
VR280-10	2 1/2" THROAT, METAL SCREEN & DIVERTER, 10' LONG, FITS 13" RIDGE CAP
VR280-10SSD	2 1/2" THROAT, STAINLESS STEEL DIVERTER, 10' LONG, FITS 13" RIDGE CAP
VR28010SSDW	2 1/2" THROAT, STAINLESS STEEL DIVERTER & WIRE, 10' LONG, FITS 13' RIDGE CAP



### VR390 SERIES

Item #	Description
VR390-10	3 1/2" THROAT, METAL SCREEN & DIVERTER, 10' LONG, FITS 13" RIDGE CAP
VR390-10SSD	3 1/2" THROAT, STAINLESS STEEL DIVERTER, 10' LONG, FITS 13" RIDGE CAP
VR390-10SSDW	3 1/2" THROAT, STAINLESS STEEL DIVERTER & WIRE, 10' LONG, FITS 13' RIDGE CAP



### VR990 SERIES

Item #	Description
VR990-4	9 1/2" THROAT, METAL SCREEN & DIVERTER, 4' LONG, FITS 16" RIDGE CAP
VR990-10	9 1/2" THROAT, METAL SCREEN & DIVERTER, 10' LONG, FITS 16" RIDGE CAP
VR990-4SSD	9 1/2" THROAT, STAINLESS STEEL DIVERTER, 4' LONG FITS 16" RIDGE CAP
VR990-10SSD	9 1/2" THROAT, STAINLESS STEEL DIVERTER, 10' LONG, FITS 16" RIDGE CAP
VR990-4SSDW	9 1/2" THROAT, STAINLESS STEEL DIVERTER & WIRE, 4' LONG, FITS 16" RIDGE CAP
VR990-10SSDW	9 1/2" THROAT, STAINLESS STEEL DIVERTER & WIRE, 10' LONG, FITS 16" RIDGE CAP



## Gable/Wall Vents

### Rectangle/Square

Item #	Description
GV1424	RECTANGLE WALL VENT 14" x 24"
GV1426	RECTANGLE WALL VENT 14" x 26"
GV1824	RECTANGLE WALL VENT 18" x 24"
GV2424	SQUARE WALL VENT 24" x 24"
GV2430	RECTANGLE WALL VENT 24" x 30"
GV2530	RECTANGLE WALL VENT 25" x 30"
GV2824	RECTANGLE WALL VENT 28" x 24"
GV3030	SQUARE WALL VENT 30" x 30"
GV3036	RECTANGLE WALL VENT 30" x 36"
GV3636	SQUARE WALL VENT 36" x 36"
* Optional J-Trim Available	



### Octagon

Item #	Description
GVOC24	OCTAGON WALL VENT 24"
GVOC30	OCTAGON WALL VENT 30"
GVOC36	OCTAGON WALL VENT 36"
GVOC42	OCTAGON WALL VENT 42"
GVOC48	OCTAGON WALL VENT 48"
* J-Trim included as standard	



## Gable/Wall Vents



### Triangle

Item #	Description
GVTRI36	TRIANGLE GABLE VENT 36"
GVTRI42	TRIANGLE GABLE VENT 42"
GVTRI48	TRIANGLE GABLE VENT 48"
GVTRI54	TRIANGLE GABLE VENT 54"
GVTRI60	TRIANGLE GABLE VENT 60"
GVTRI66	TRIANGLE GABLE VENT 66"
GVTRI72	TRIANGLE GABLE VENT 72"

### Peaked

Item #	Description
GVPK1824	PEAKED GABLE VENT 18" x 24"
GVPK2424	PEAKED GABLE VENT 24" x 24"
GVPK2430	PEAKED GABLE VENT 24" x 30"
GVPK3030	PEAKED GABLE VENT 30" x 30"

## Shutters



### Louvered

Item #	Description
WS24	Louvered 14 1/2" Wide x 24" Tall
WS32	Louvered 14 1/2" Wide x 32" Tall
WS36	Louvered 14 1/2" Wide x 36" Tall
WS40	Louvered 14 1/2" Wide x 40" Tall
WS48	Louvered 14 1/2" Wide x 48" Tall
WS60	Louvered 14 1/2" Wide x 60" Tall
WS72	Louvered 14 1/2" Wide x 72" Tall
WS76	Louvered 14 1/2" Wide x 76" Tall

# Weathervanes

Laser Cut - 2 Dimensional



Horse and Buggy Amish  
HC-HBAM



Horse and Buggy Doctor  
HC-HBDR  
*Also available in Black  
BL-HBDR*



Arabian  
HC-HARA



Barrel Racer  
HC-HBRL



Draft Horse  
HC-HDRA



Mule  
HC-HMUL



Quarter Horse  
HC-HQTH



Running Horse  
HC-HRUN  
*Also available in Black  
BL-HRUN*



Saddlebred  
HC-HSLD



Tennessee Walker  
HC-HTNW



Basset  
HC-DBAH



Beagle  
HC-DBEA



Border Collie  
HC-DBCL



Boxer  
HC-DBOX



Bulldog  
HC-DBUL



Chihuahua  
HC-DCHI



Cocker Spaniel  
HC-DCSP



Corgi  
HC-DCOR



Dachshund  
HC-DDAC



Doberman  
HC-DDOB



# Weathervanes

## Standard Size - 2 Dimensional



German Shepherd  
HC-DGSH



Golden Doodle  
HC-DGDO



Golden Retriever  
HC-DGRE



Greyhound  
HC-DGRH



Lab Sitting  
HC-DLAS



Pointer  
HC-DPOI



Poodle  
HC-DPDL



Pug  
HC-DPUG



Schnauzer  
HC-DSCH



Scottie  
HC-DSCO



Setter  
HC-DSET



Shih Tzu  
HC-DSTZ



Westie  
HC-DWES



Yorkie  
HC-DYOR



Cat and Butterfly  
HC-CABU



Cat Dog Love  
HC-CDLV



Cats in Window  
HC-CWIN

# Weathervanes

Standard Size - 2 Dimensional



Alpaca & Baby  
HC-ALBA



Alpaca/Llama  
HC-ALLM



Bear  
HC-BEAR



Bison  
HC-BISN



Cow with Calf  
HC-CWCF  
*Also available in Black  
BL-CWCF*



Coyote with Cactus  
HC-COYC



Coyote with Moon  
HC-COYM



Deer Jumping  
HC-DRJU  
*Also available in Black  
BL-DRJU*



Deer Standing  
HC-DRST



Dolphins  
HC-DOLP



Dragonfly  
HC-DRAG



Elk  
HC-ELK



Fish-Bass  
HC-FSHB



Goat  
HC-GOAT



Moose  
HC-MOOS



Panther  
HC-PANT



Rabbits with Fence  
HC-RABF



Sheep w/ Lamb  
HC-SHWL



Squirrel  
HC-SQRL



Wolf  
HC-WOLF

# Weather vanes

Laser Cut - 2 Dimensional



B-17  
HC-AB17



Bi Plane  
HC-ABIP



C-130  
HC-AC130



Cessna  
HC-ACES



Corsair  
HC-ACOR



Float Plane  
HC-AFLT



Helicopter  
HC-AHEL



Hi Wing  
HC-AHIW



Lo Wing  
HC-ALOW



P-51 Mustang  
HC-AP51



Tri Motor  
HC-ATRI



Twin  
HC-ATWN



Train  
HC-TRAI



Truck-Chevy  
HC-CCHT



Truck-Ford  
HC-CFOT



57 Chevy  
HC-CS7C



Camaro  
HC-CCAM



Corvette C-4  
HC-CC4C



Corvette C-5  
HC-CC5C



Mustang  
HC-CMUS



# Weathervanes

Laser Cut - 2 Dimensional



Birdhouse  
HC-BBHS



Cardinal  
HC-BCARD



Ducks-Mallard  
HC-BDUC



Eagle  
HC-BEAG



Geese  
HC-BGES



Heron  
HC-BHER



Hummingbird  
HC-BHUM



Loon  
HC-BLOO



Rooster  
HC-BROO  
Also available in Black  
BL-BROO



Farm Scene  
HC-FARM



Tractor-Farmall  
HC-TRFA



Tractor-JD  
HC-TRJD  
Also available in Black  
BL-TRJD



Fisherman  
HC-FSHM



Golfer-Female  
HC-GLFF



Golfer-Male  
HC-GLFM



Hot Air Balloons  
HC-HOTA



Hunter w/ Dog  
HC-HUNT



Lighthouse  
HC-LGHT



Sailboat  
HC-SAIL

# Weathervanes

## Laser Cut - 2 Dimensional



Air Force-New  
HC-MAFN



Air Force-Original  
HC-MAFO



Army-New  
HC-MARN



Army-Original  
HC-MARO



Coast Guard  
HC-MCOG



Marines  
HC-MMAR



Navy  
HC-MNAV



Flag  
HC-FLAG



EMS  
HC-EMS



Fire Department  
HC-FIRE



Police Badge  
HC-POLB



Masons  
HC-SHER



Sheriff 6Pt. Badge  
HC-MASO



Butterfly and Flowers  
HC-BUFL



Crosses  
HC-SCRS



Musical Notes  
HC-MUSN



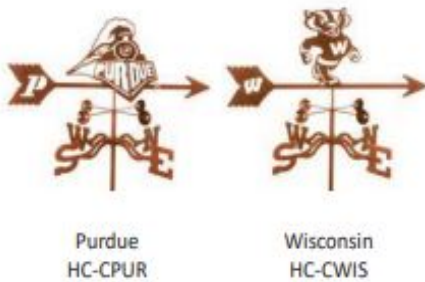
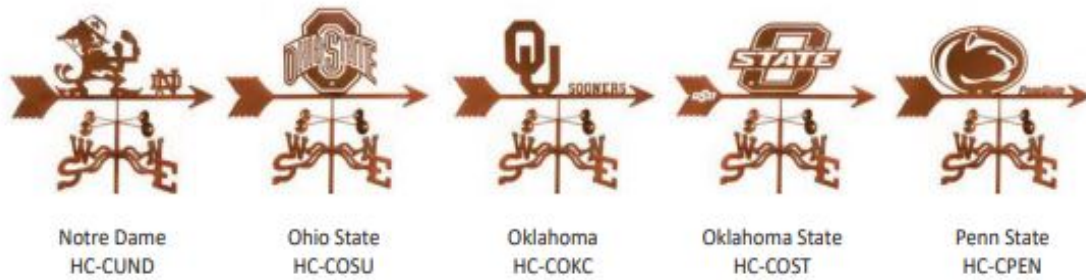
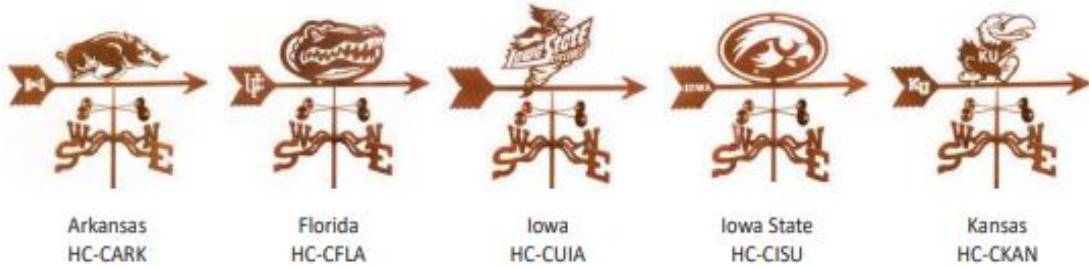
Route 66  
HC-RT66



Wine and Grapes  
HC-WINE

# Weather vanes

Laser Cut - 2 Dimensional



**Other Collegiate Weather Vanes Available!**  
Call for availability

Clemson  
Duke  
Florida State  
Georgia Tech  
Illinois

Indiana  
Louisville  
LSU  
North Carolina State  
and many more!



**All building packages unloaded directly at the build site by highly skilled company drivers.**

