

Overview

STUNNING SPACES

Maximize your spatial efficiency by seamlessly connecting or partitioning valuable areas, transforming two spaces into one or vice versa. Integrate the natural beauty of the outdoors into your living space with the smooth operation of Fenestar Vertical Lift Doors. Effortlessly opening and neatly stacking above, these doors reveal breathtaking, unobstructed views and create an expansive, open environment.



FORM + FUNCTION

Experience the panoramic allure of Fenestar Vertical Lift Door panels, available in three ingenious vertical folding systems distinguished by their slim sightlines that not only maximize the glass area but also showcase stunning views. Operated with ease, these panels are equipped with expertly crafted counter-weight balanced hardware, providing smooth operation and secure closure that ensures your peace of mind.

Tailor your aesthetic with the choice between the robust elegance of fully welded steel or stainless steel frames, available in a spectrum of colors. Alternatively, opt for the timeless charm of real bronze patinated frames. Both options seamlessly blend strength and aesthetics.

Performance takes precedence with Fenestar Vertical Lift Doors featuring thermally broken frames, seamlessly integrated with high performance double-pane insulating glass. Style remains uncompromised, thanks to a diverse range of glazing beads and muntin grid profiles, complemented by sleek mullions that can be arranged in any design pattern.

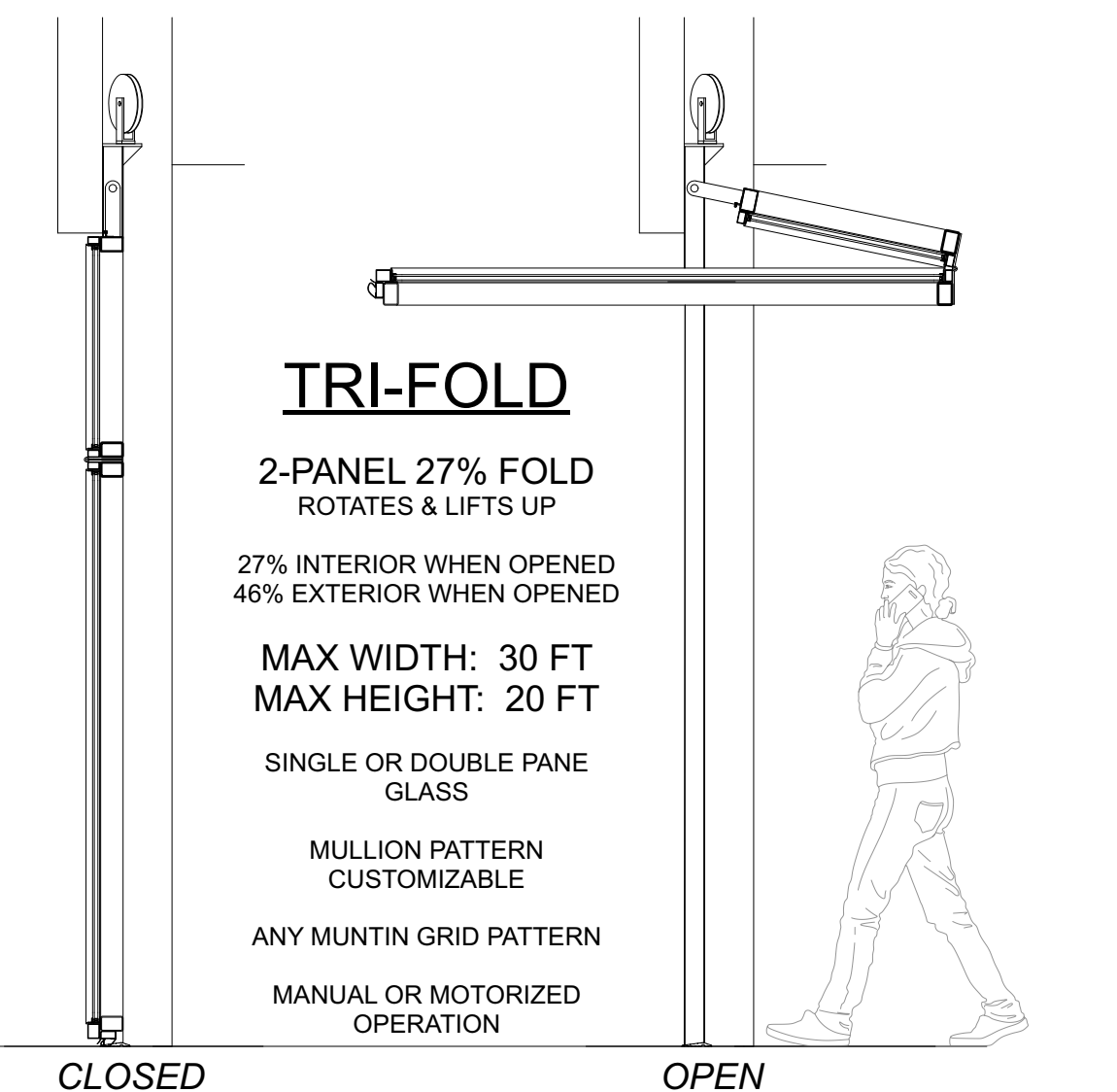
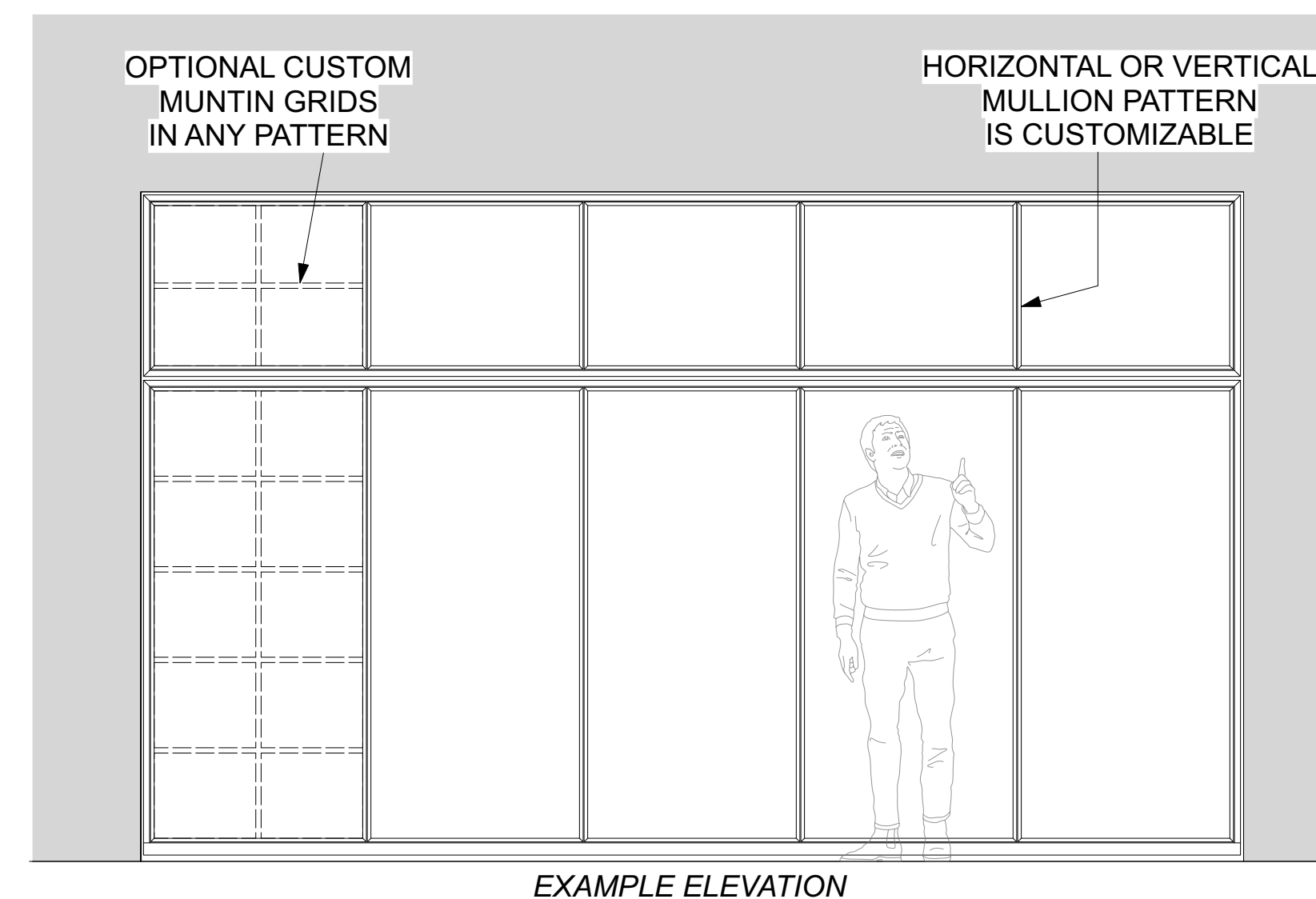
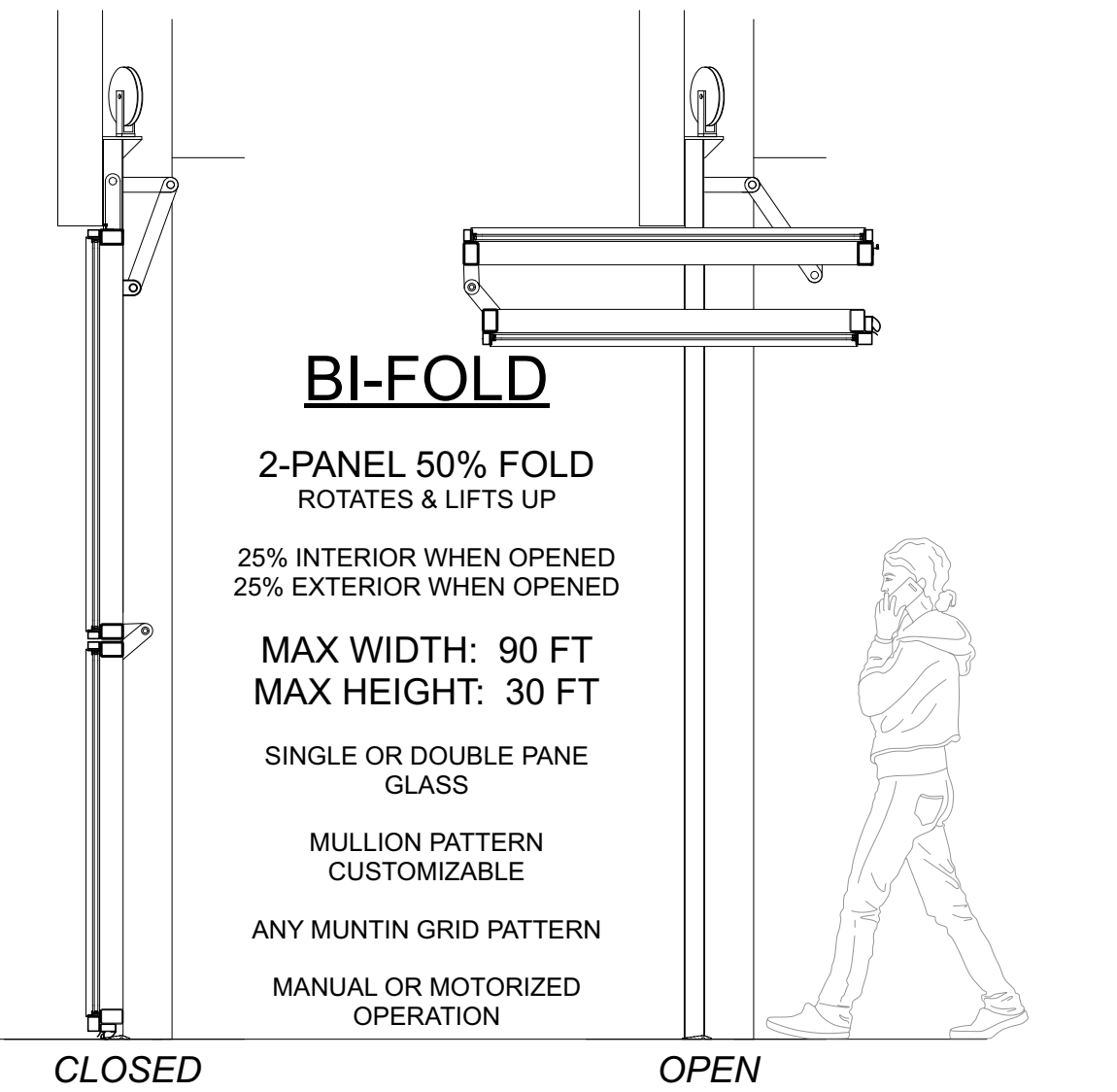
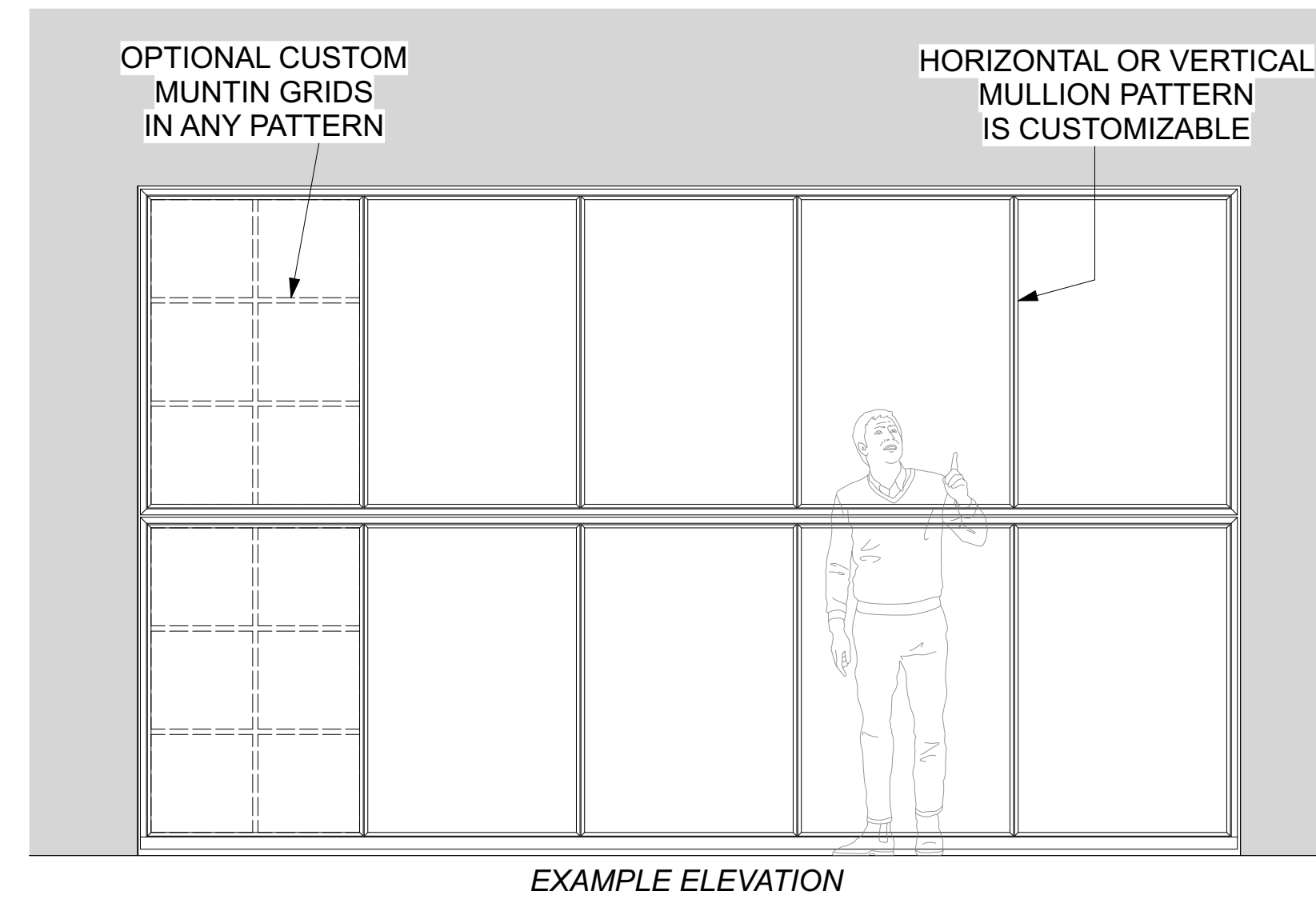
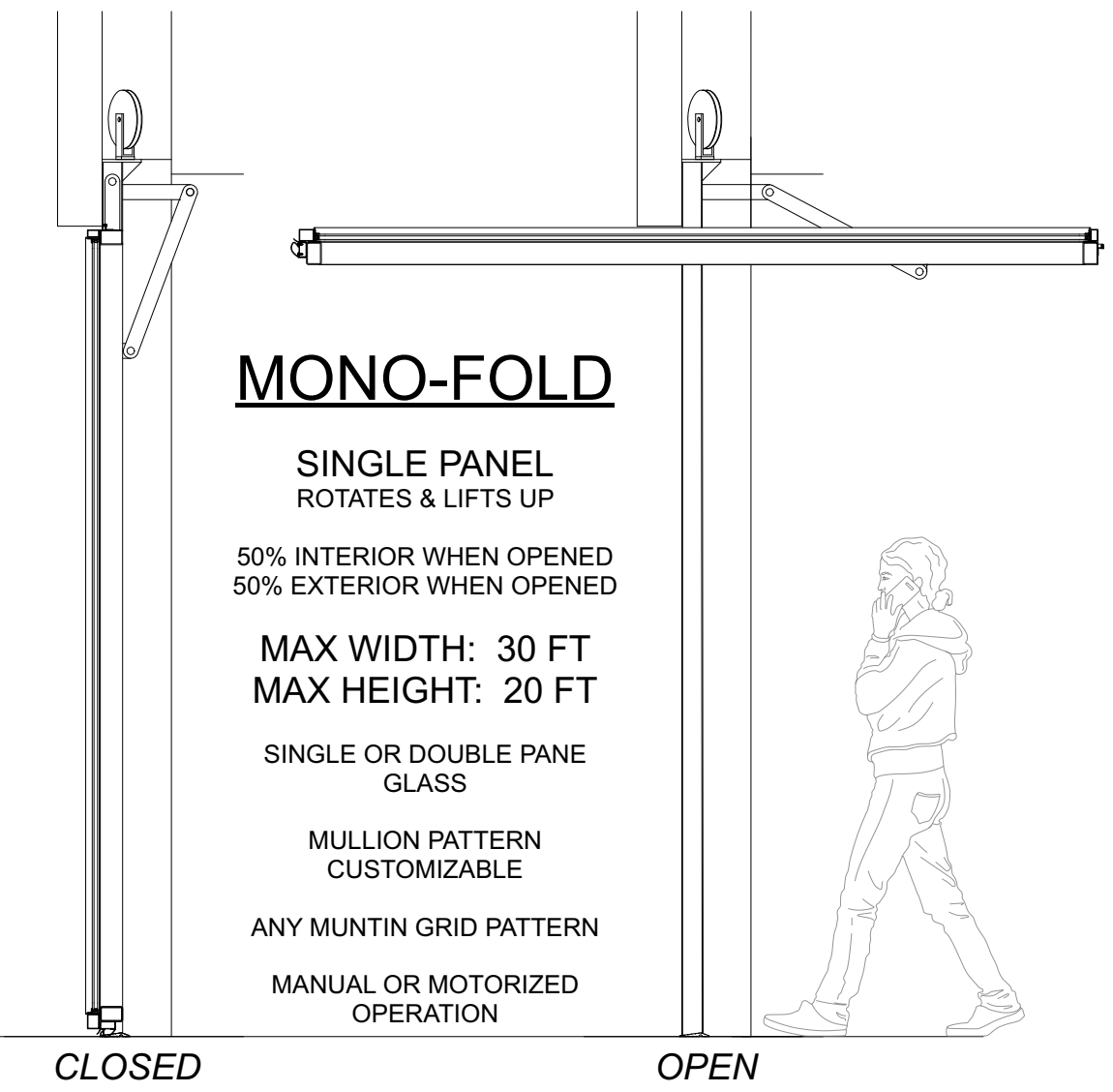
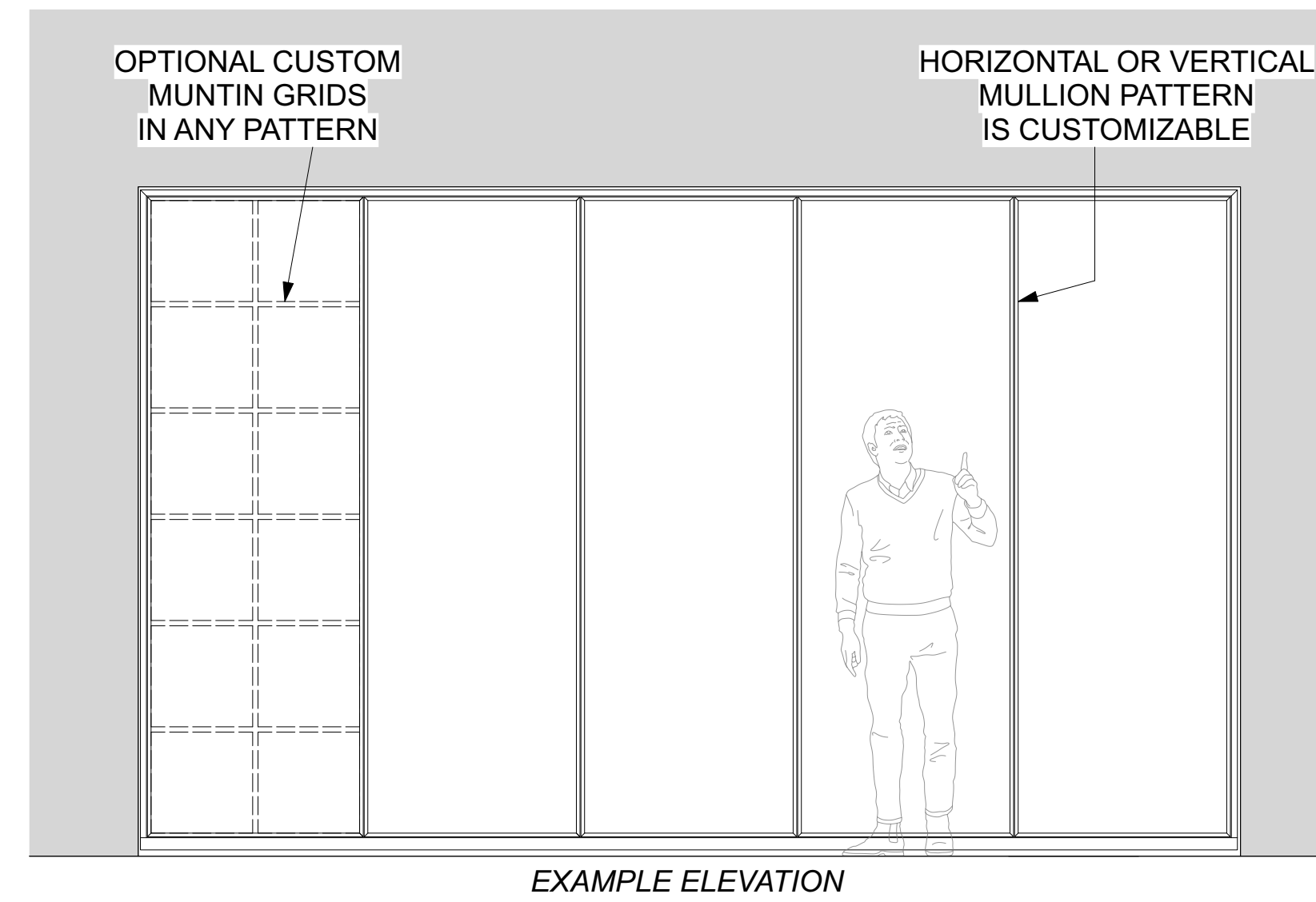
Don't see exactly what you need?
Consult with Fenestar for full range of
options and custom possibilities.
www.fenestarus.com
(862) 343-9299

STANDARD FEATURES

- Narrow Profiles for Slender Sightlines
- Thermally-Broken Framing
- Fully Welded Construction
- 1" Double Pane Low-E Insulating Glass
- Warm Edge Glass Spacers
- Structural Mullions
- Concealed Counter-weight Balanced Hardware
- Smooth and Easy Manual Operation
- Safety Break Standard
- ADA Threshold
- AAMA 2604 Superdurable Powdercoat Finish
- Choose any RAL color
- Professional Technical Guidance and Engineering

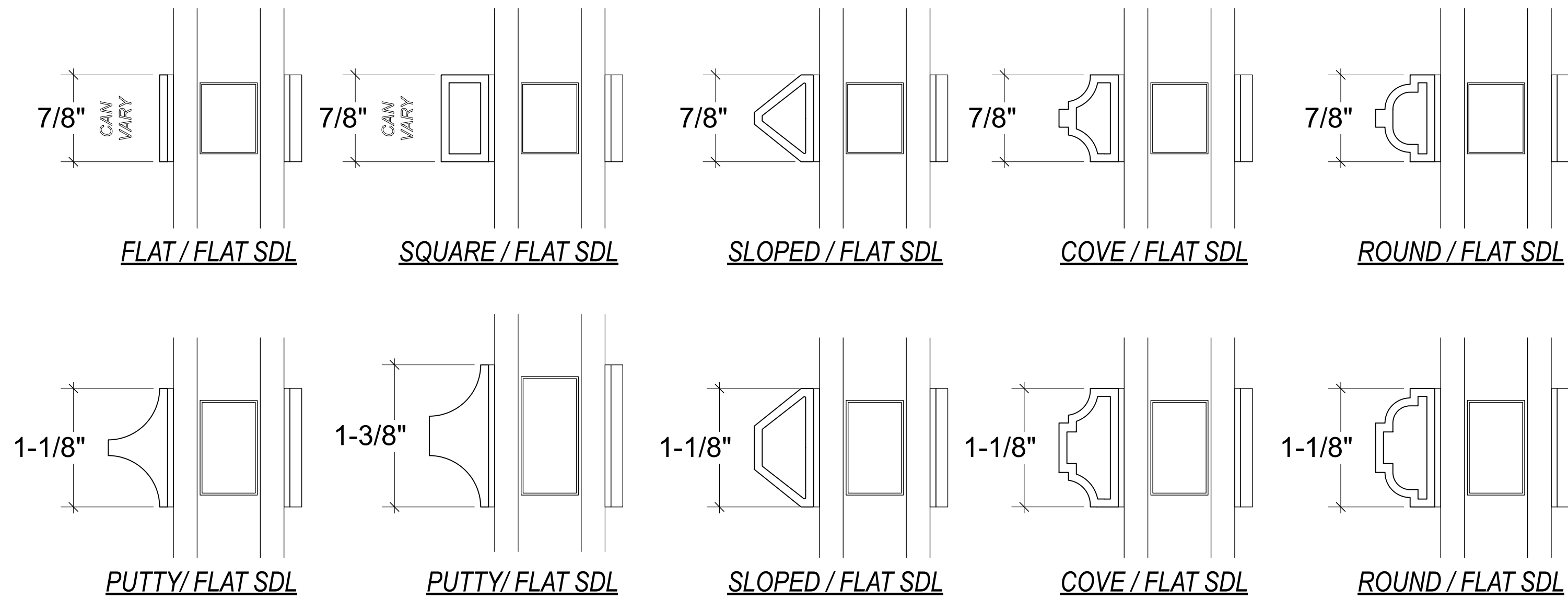
UNIQUE OPTIONS

- Classic or Modern Styling
- Steel, Stainless Steel, or Bronze Frames
- Mono-Fold Operation (single operable panel)
- Bi-Fold Operation (two equal panels)
- Tri-Fold Operation (two unequal panels)
- Choice of Glazing Bead Profiles
- Custom Glass Specification
- SDL Muntin Grids
- Split finishes, Custom color matching
- AAMA 2605 (Kynar) finish
- Obstruction Sensing 110V Quiet Motorization
- Touch Screen Control
- Battery Backup Available

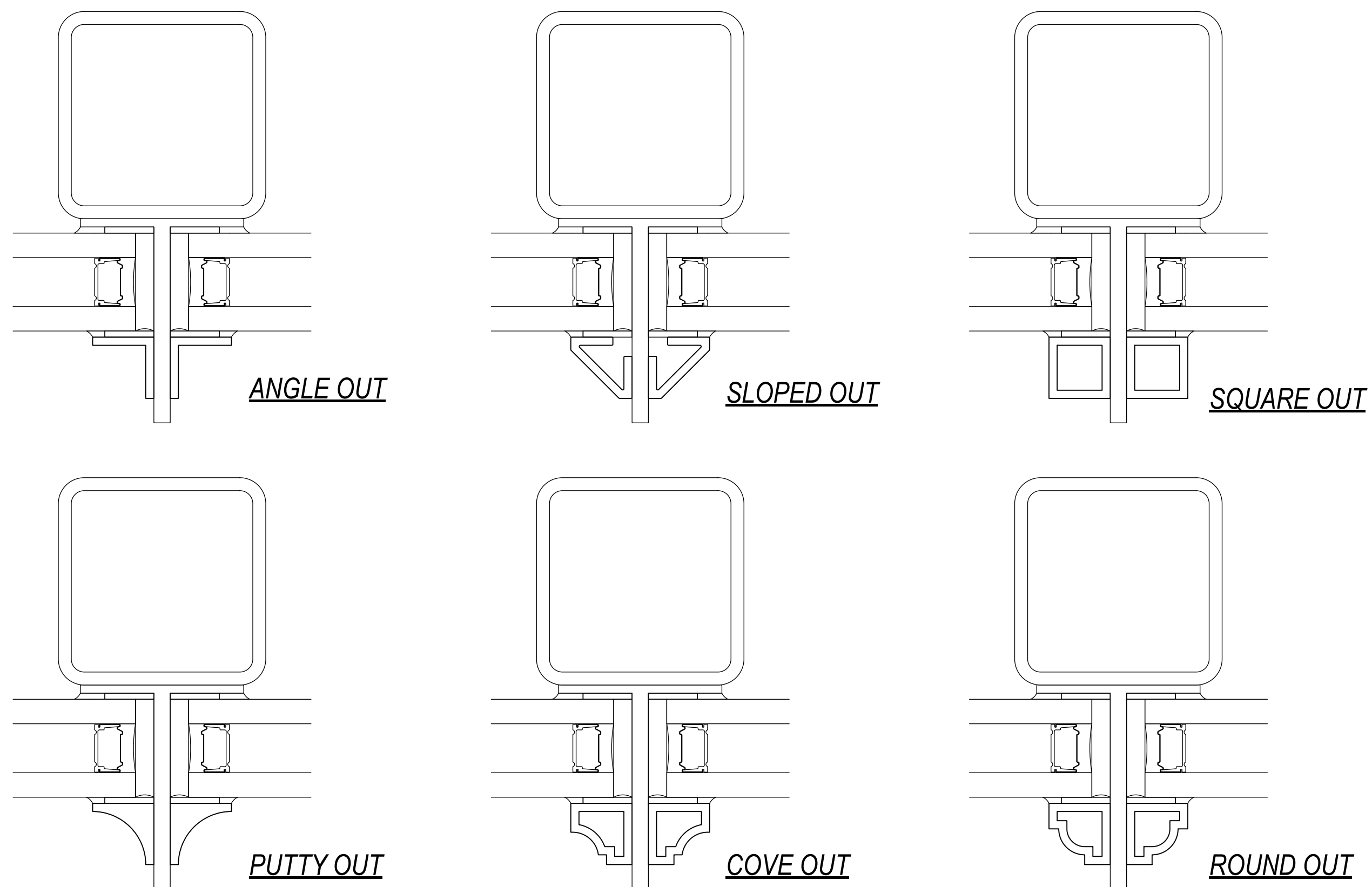


Muntins & Glazing Beads

MUNTIN GRIDS - STANDARD OPTIONS



OUTSIDE GLAZED - STANDARD BEAD PROFILES



Vertical Lift Doors

Don't see exactly what you need?
Consult with Fenestar for full range of
options and custom possibilities.
www.fenestarus.com
(862) 343-9299

Finish Options

STEEL FRAMES



RAL COLORS

Fenestar Vertical Lift Doors are available with galvanized steel or stainless steel frames, factory finished with a Super Durable polyester powdercoat finish. Any RAL color can be selected.

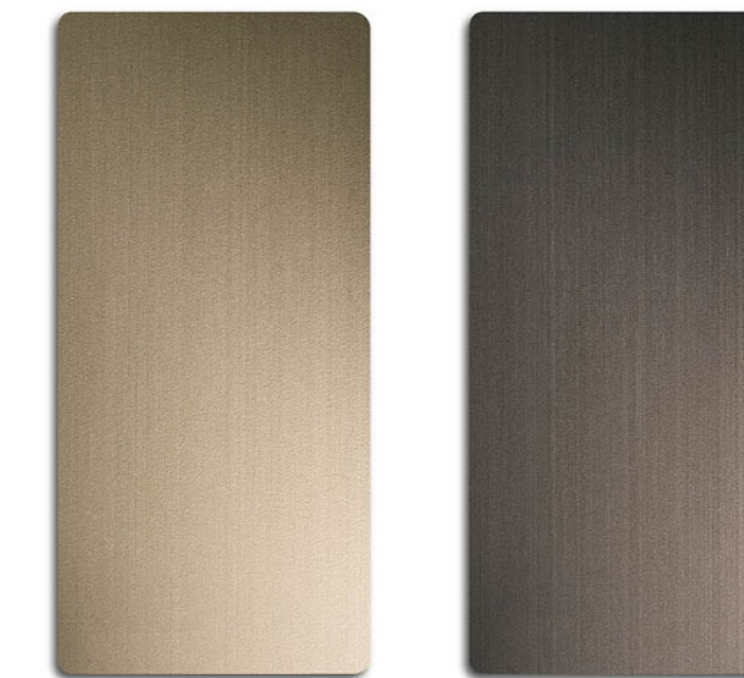
This standard powder coat finish provides excellent exterior durability, excellent chemical resistance, is highly impact resistant and very flexible, it has excellent abrasion resistance, and meets and exceeds AAMA 2604 performance requirements.

- AAMA 2604 performance standard
- Select any RAL color standard
- Custom color matching available
- Split finishes available
(different colors inside and out)
- Metallic finishes available
- Textured finishes available
- AAMA 2605 (Kynar) available

BRONZE FRAMES

Fenestar Vertical Lift Doors are available with real bronze frames, factory finished in beautiful hand grained Light or Dark patinas, and are shipped with a waxed coating to help protect the factory patina during shipping, handling and installation.

Bronze is a very low maintenance material and is extremely corrosion resistant. Bronze cannot rust – it only becomes more handsome with age.



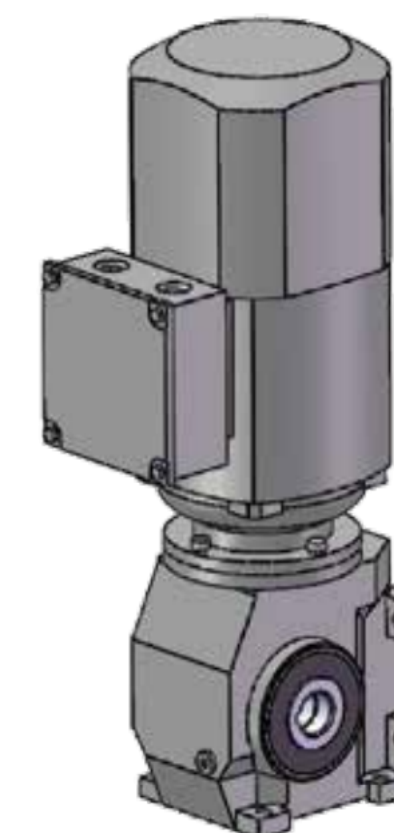
LIGHT PATINA

DARK PATINA

Bronze is a material that can be left exposed to the elements and will simply darken and age, and become more and more beautiful, over time, because bronze naturally ages through surface oxidation, creating beautiful rustic tones of brown/bronze.

Consult with Fenestar regarding custom patina finishes.

Motorization Option



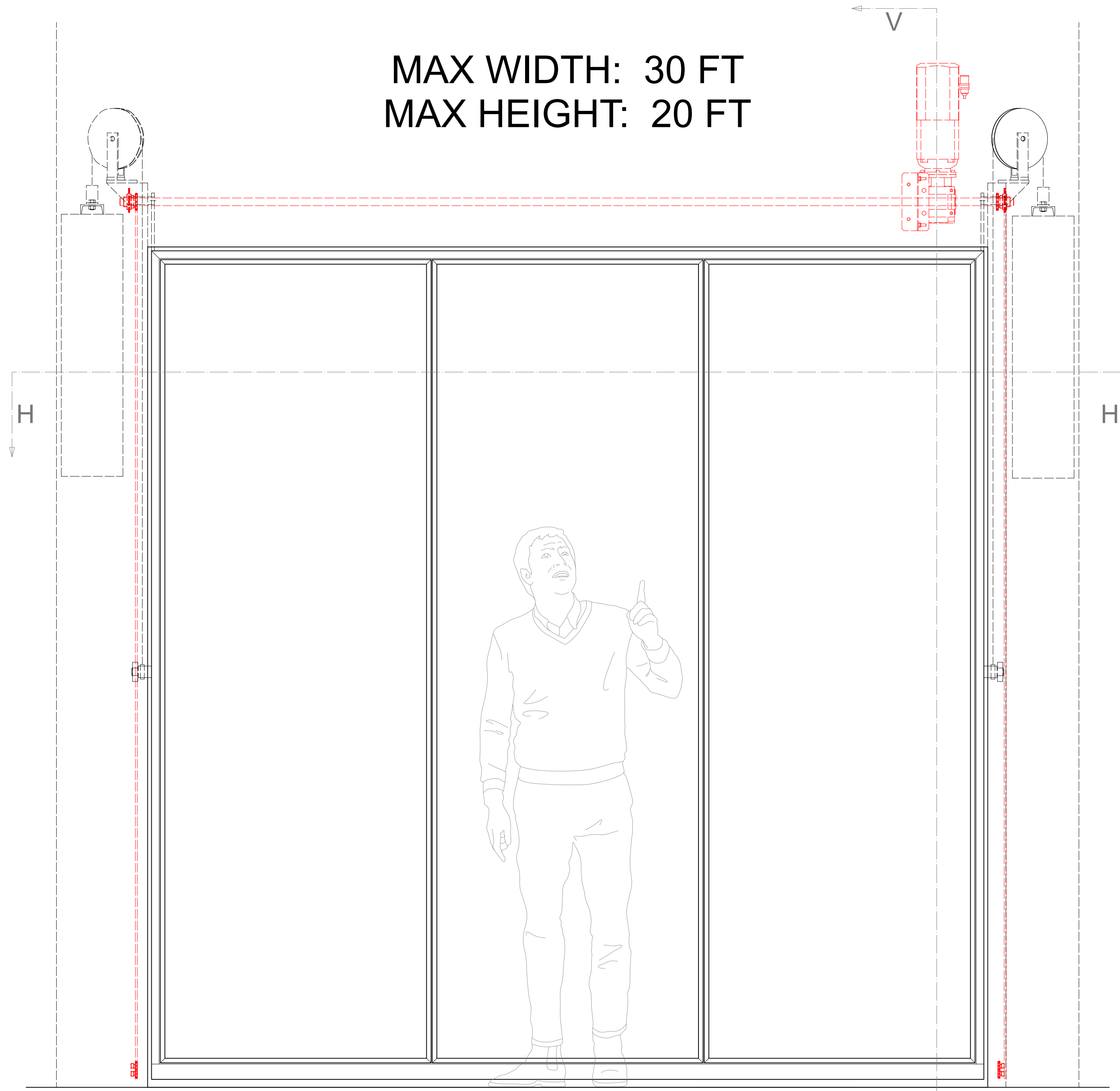
Fenestar Vertical Lift Doors boast cutting-edge motorization, featuring a robust 1-horsepower system that operates seamlessly on a standard 120 V power supply. This motor is not only remarkably quiet but also impressively powerful, meeting the highest safety standards available in the market.

The door's motorization system stands out for its ultra-quiet performance and compatibility with touchscreen controls, offering a user-friendly interface. Additionally, it incorporates an advanced obstruction sensing mechanism, ensuring heightened safety during operation. For added convenience, an optional battery backup feature comes into play in the event of a power outage.

- 1 Horsepower Ultra-quiet Motor
- 120 V Power Supply
- Touchscreen Wall Control Station
- Obstruction Sensing Feature
- Battery Backup Available
- Smart Phone Programmable
- 3rd Party Integration into building automation systems

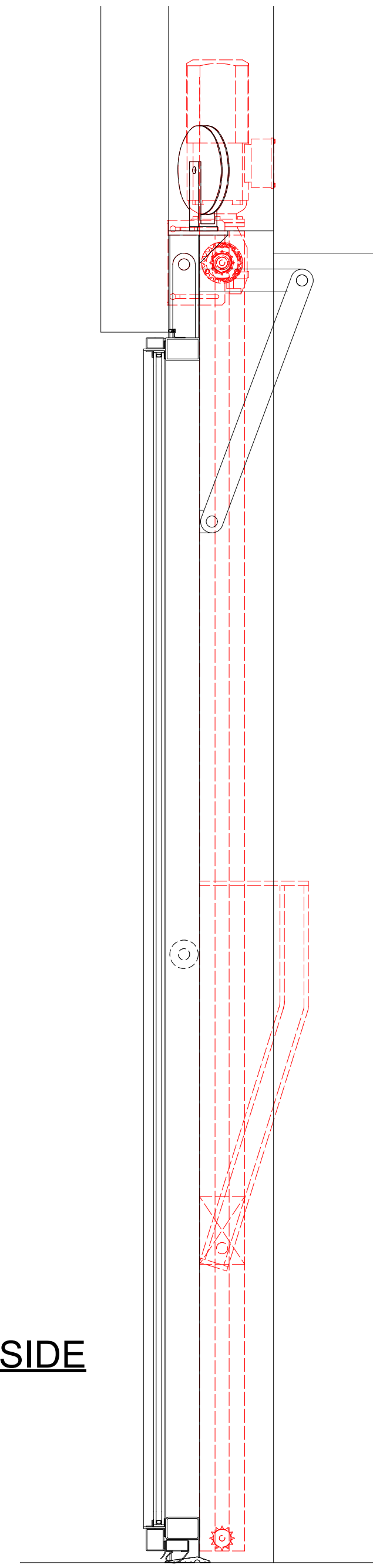


MAX WIDTH: 30 FT
MAX HEIGHT: 20 FT

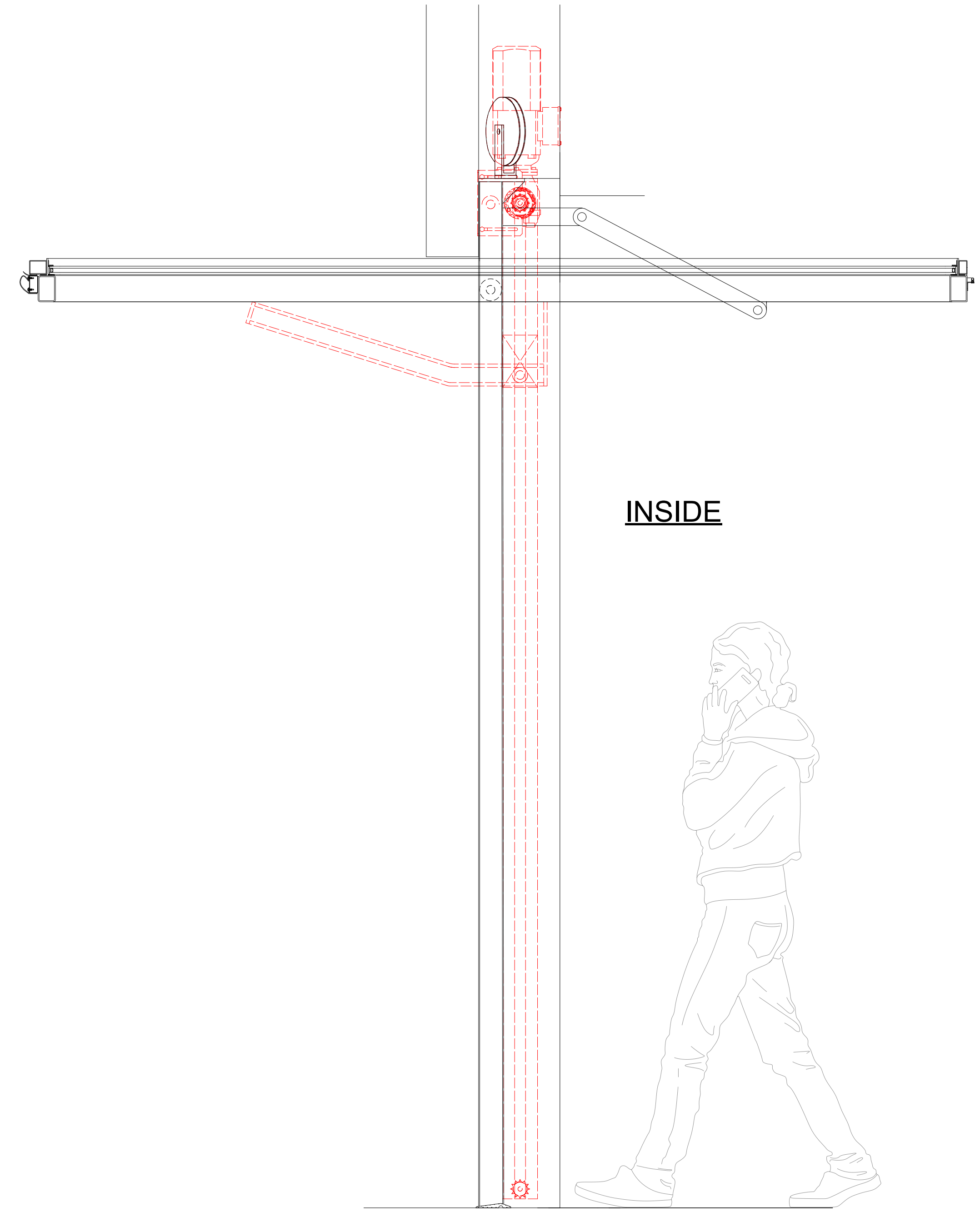


EXTERIOR VIEW

OUTSIDE



INSIDE



MONO-FOLD VERTICAL LIFT DOOR
COUNTER WEIGHT BALANCED WITH **MOTOR OPTION**
EXAMPLE ELEVATION W SECTIONS

Project No:

System:
FS-50VL Mono-Fold
Steel, Stainless Steel or Bronze
Counter-balanced Vertical Lift Doors
Manual or Motorized

© 2024 Fenestar USA LLC

THESE DRAWINGS, AND PRODUCTS REPRESENTED HEREIN, ARE AND SHALL REMAIN THE PROPERTY OF FENESTAR USA LLC AND ANY REPRODUCTION, USE, SALE OR OTHER DISTRIBUTION OF THESE DOCUMENTS, OR THE DESIGN MATERIALS OR PRODUCTS HEREIN, INTERNALLY OR TO ANY OTHER PARTIES, IS EXPRESSLY FORBIDDEN WITHOUT THE WRITTEN CONSENT OF FENESTAR USA LLC. RECEIPT OF THESE DRAWINGS, IN PART OR IN FULL, FROM ANY PARTY AND IN ANY FORMAT CONSTITUTES EVIDENCE OF ACCEPTANCE OF THESE RESTRICTIONS.

Rev	Date	By	Description

Drawn By: Submittal:

Date: Jan. 23, 2024

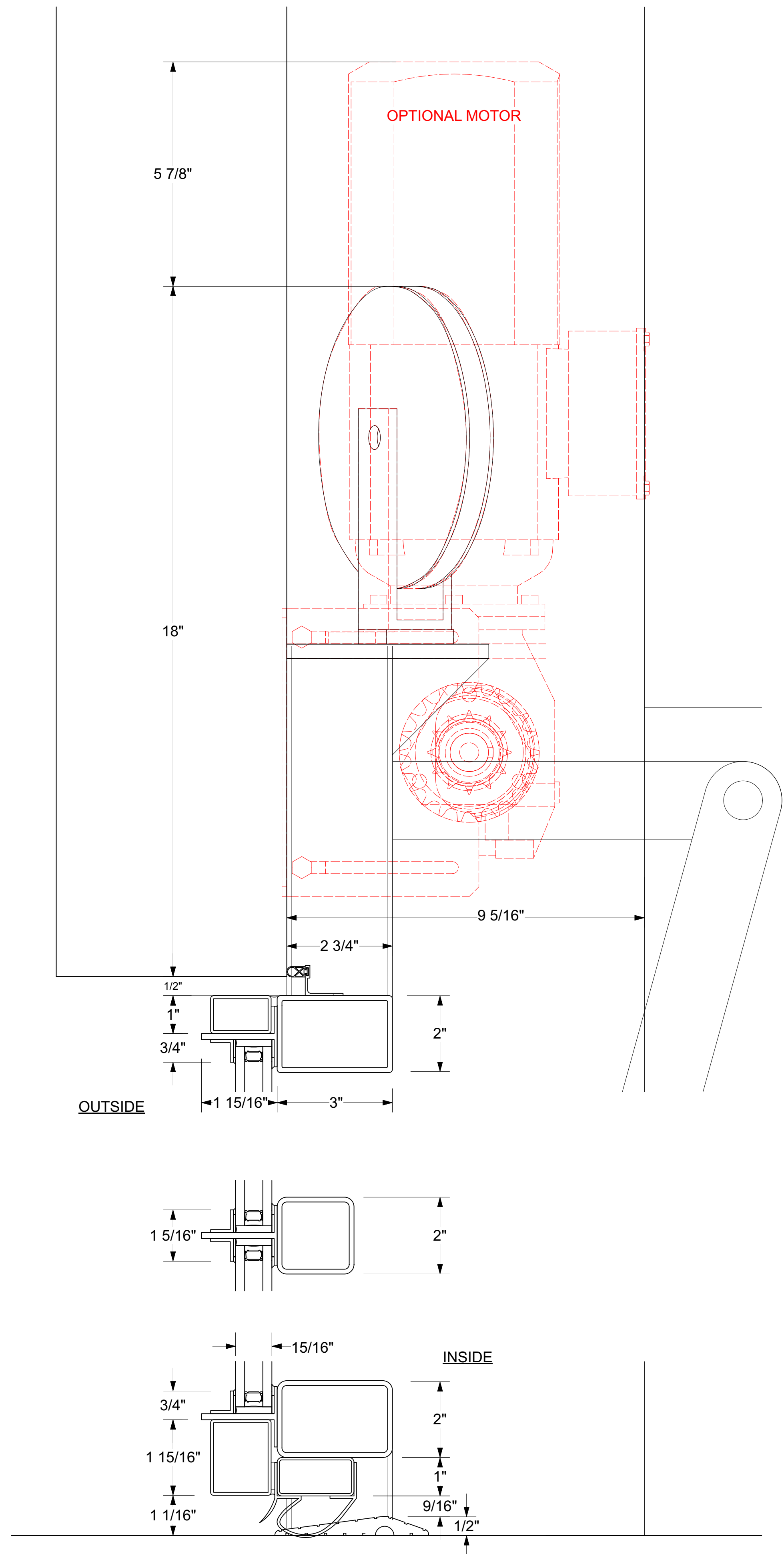
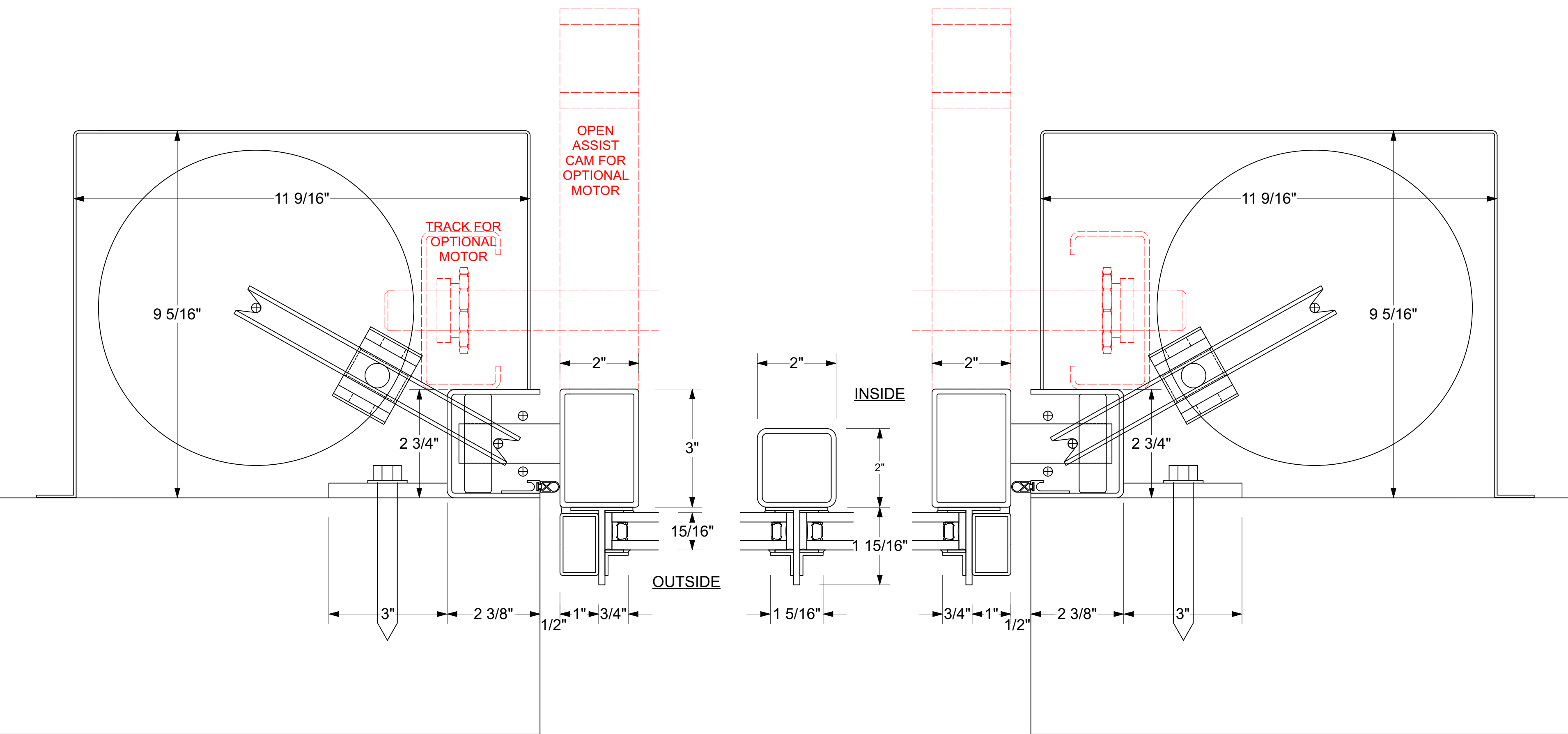
Scale: NTS

Drawing No: E-01

MONO-FOLD VERTICAL LIFT DOOR

COUNTER WEIGHT BALANCED WITH **MOTOR OPTION**

TYPICAL DETAILS



Rev	Date	By	Description

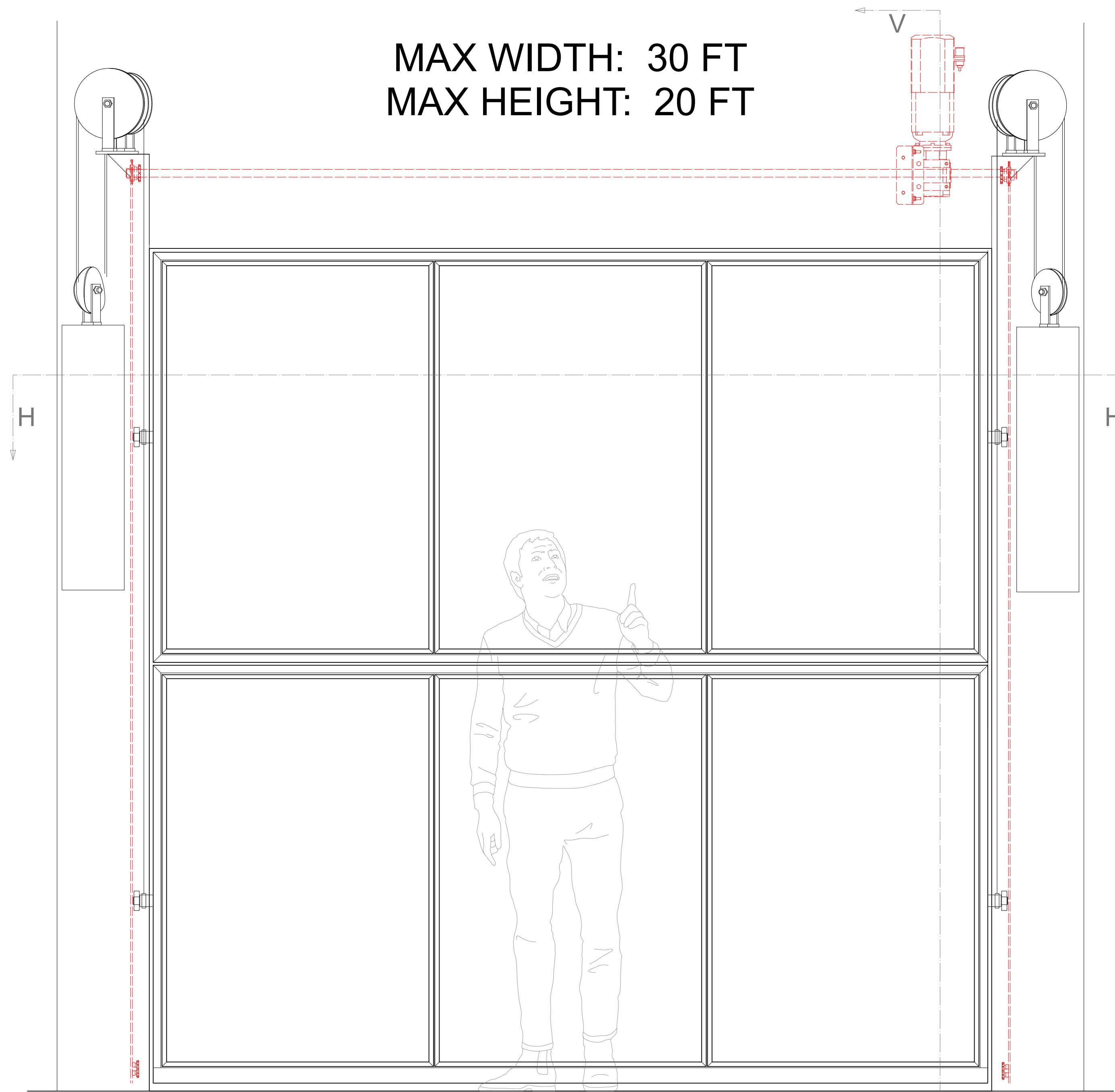
Drawn By: _____ Submittal: _____

Date: **Jan. 23, 2023**

Scale: **NTS**

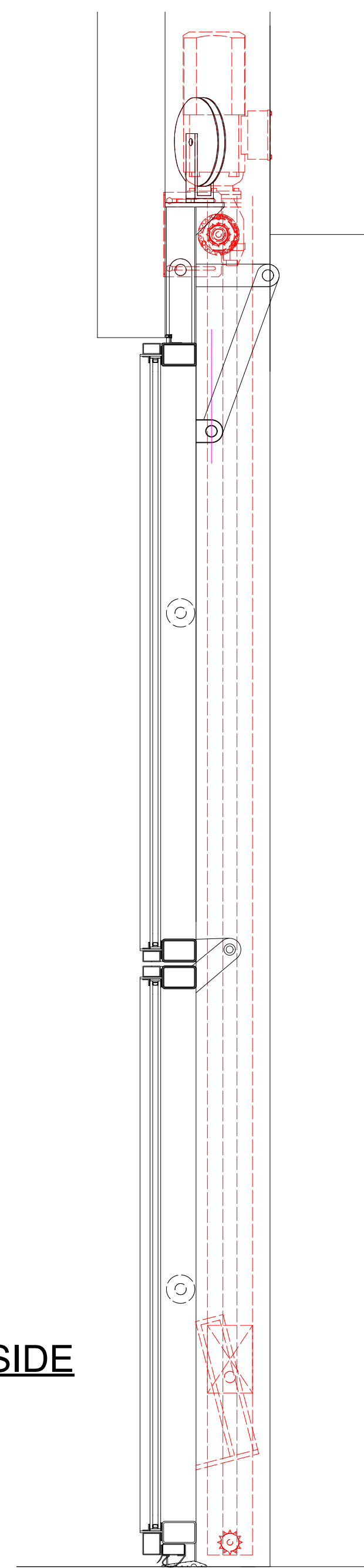
Drawing No: **D-01**

MAX WIDTH: 30 FT
MAX HEIGHT: 20 FT



EXTERIOR VIEW

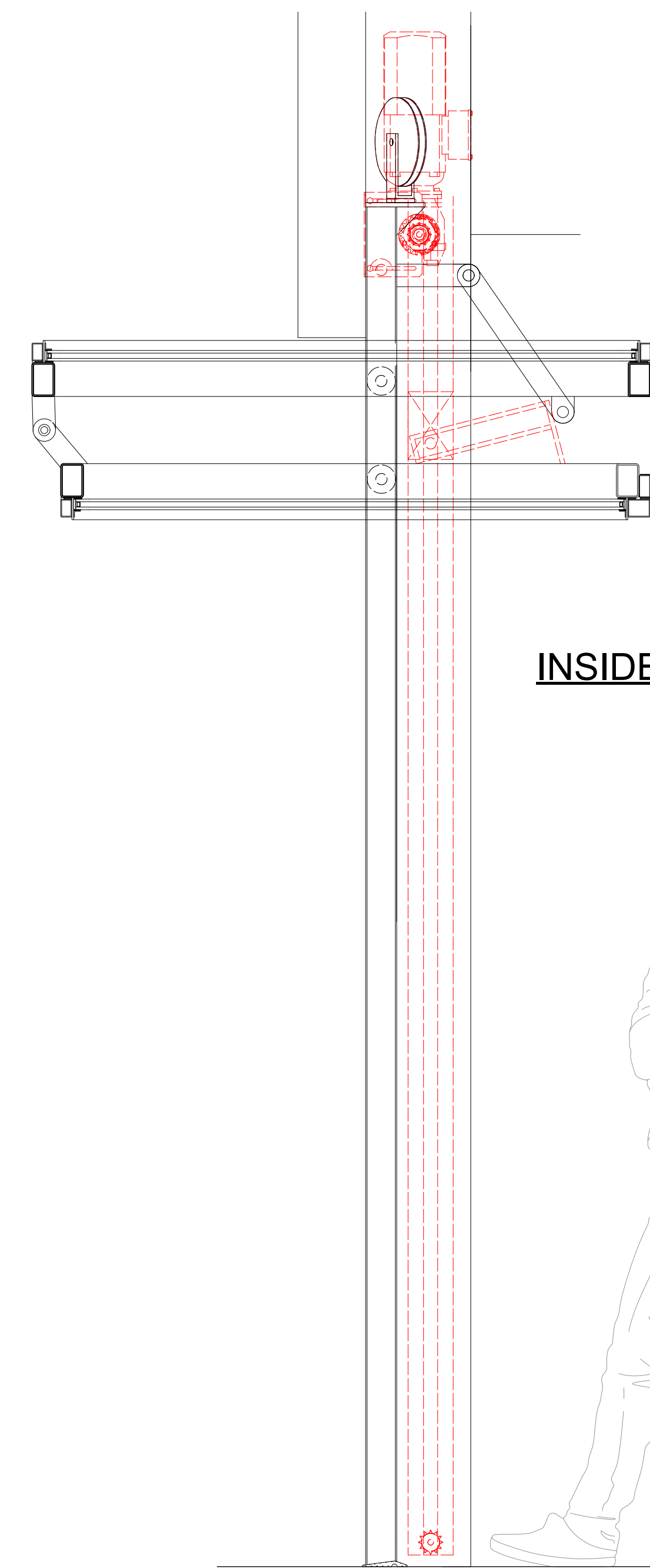
OUTSIDE



BI-FOLD VERTICAL LIFT DOOR

COUNTER WEIGHT BALANCED WITH **MOTOR OPTION**

EXAMPLE ELEVATION W SECTIONS



INSIDE



Project No:

System:
FS-50VL Bi-Fold
Steel, Stainless Steel or Bronze
Counter-balanced Vertical Lift Doors
Manual or Motorized

© 2024 Fenestar USA LLC

THESE DRAWINGS, AND PRODUCTS REPRESENTED HEREIN, ARE AND SHALL REMAIN THE PROPERTY OF FENESTAR USA LLC AND ANY REPRODUCTION, USE, SALE OR OTHER DISTRIBUTION OF THESE DOCUMENTS, OR THE DESIGN MATERIALS OR PRODUCTS HEREIN, INTERNALLY OR TO ANY OTHER PARTIES, IS EXPRESSLY FORBIDDEN WITHOUT THE WRITTEN CONSENT OF FENESTAR USA LLC. RECEIPT OF THESE DRAWINGS, IN PART OR IN FULL, FROM ANY PARTY AND IN ANY FORMAT CONSTITUTES EVIDENCE OF ACCEPTANCE OF THESE RESTRICTIONS.

Rev	Date	By	Description

Drawn By: Submittal:

Date: **Jan. 23, 2024**

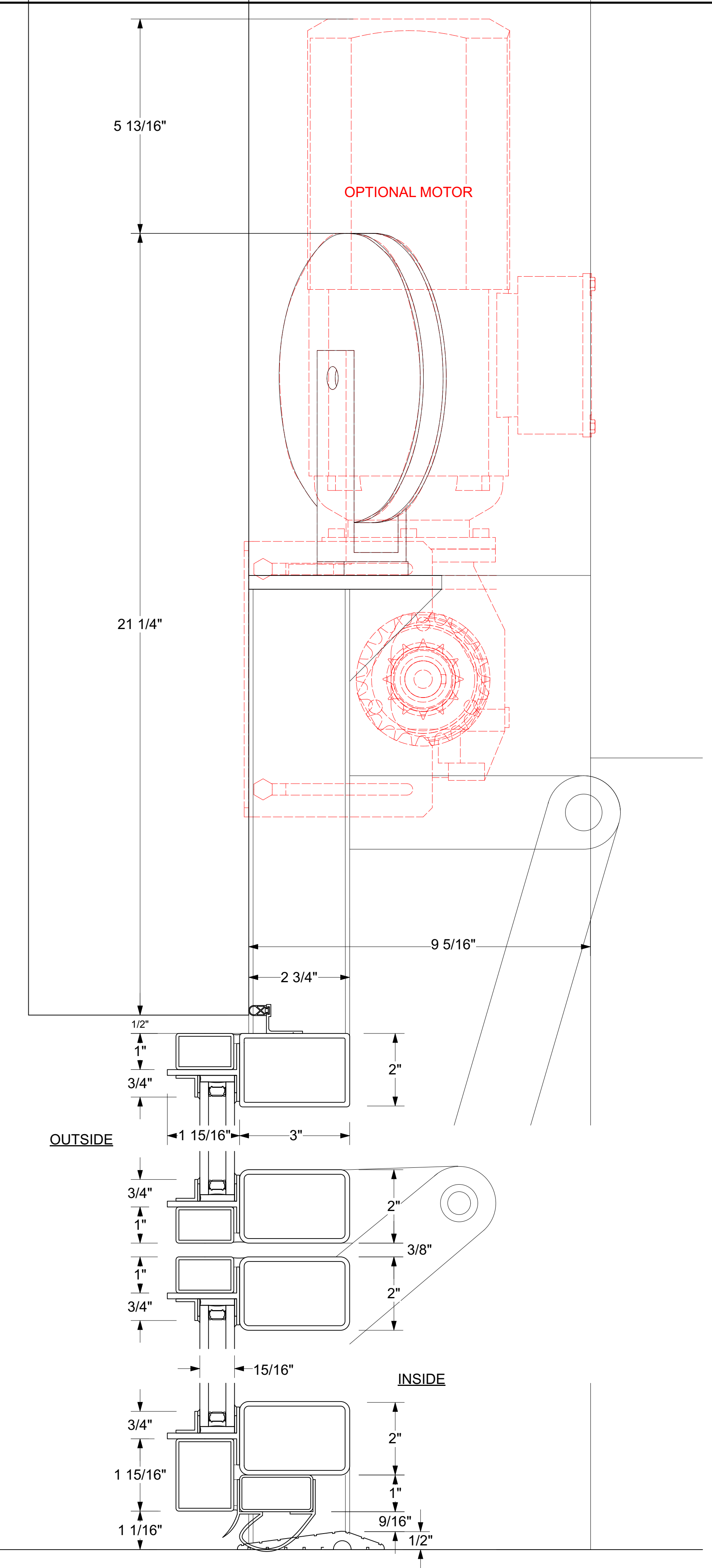
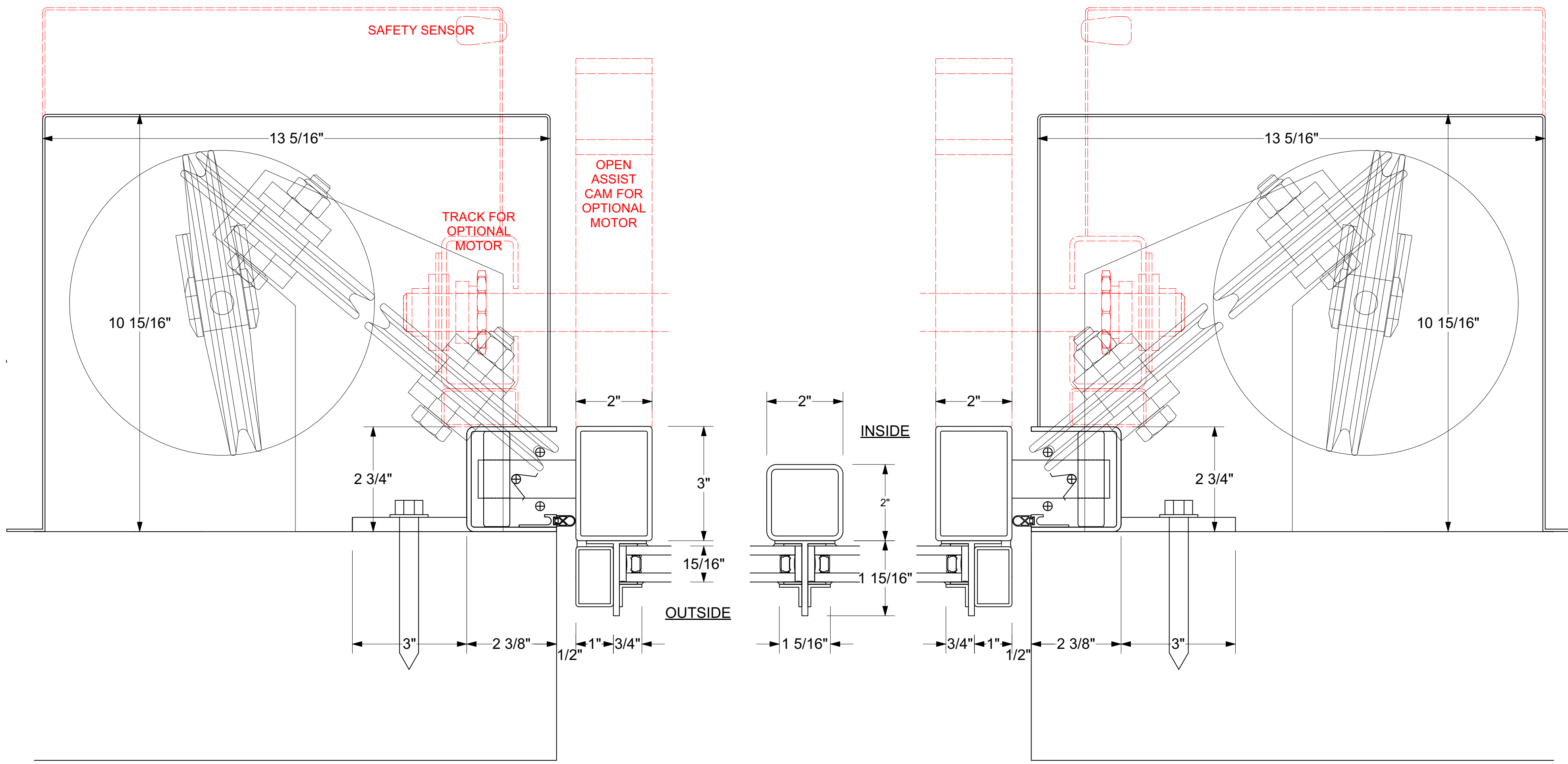
Scale: **NTS**

Drawing No: **E-02**

BI-FOLD VERTICAL LIFT DOOR

COUNTER WEIGHT BALANCED WITH **MOTOR OPTION**

TYPICAL DETAILS



System:
 FS-50VL Bi-Fold
 Steel, Stainless Steel or Bronze
 Counter-balanced Vertical Lift Doors
 Manual or Motorized

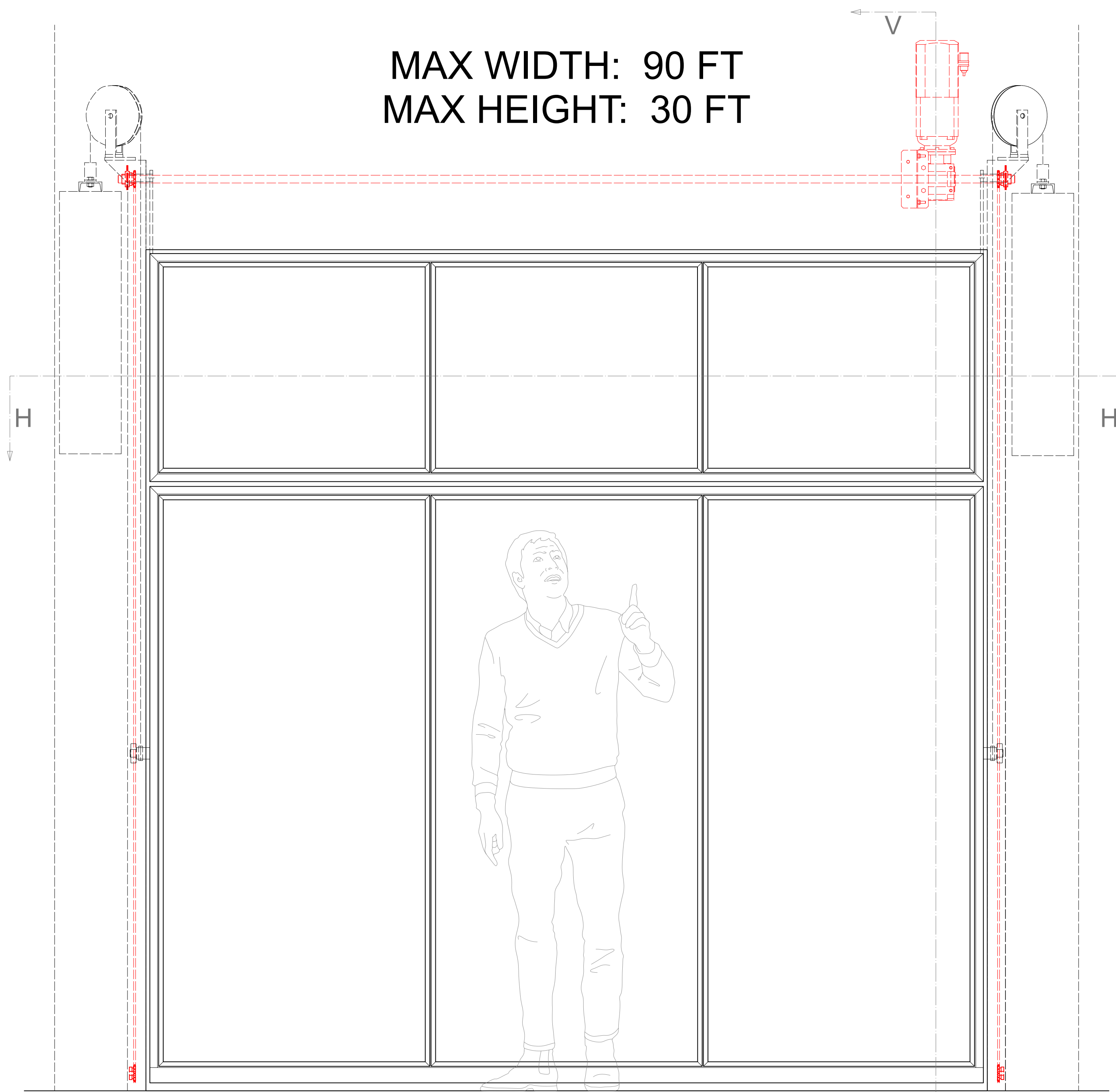
© 2024 Fenestar USA LLC

THESE DRAWINGS AND PRODUCTS REPRESENTED HEREIN, ARE AND SHALL REMAIN THE PROPERTY OF FENESTAR USA LLC AND ANY REPRODUCTION, USE, SALE OR OTHER DISTRIBUTION OF THESE DOCUMENTS, OR THE DESIGN MATERIALS OR PRODUCTS HEREIN, INTERNALLY OR TO ANY OTHER PARTIES, IS EXPRESSLY FORBIDDEN WITHOUT THE WRITTEN CONSENT OF FENESTAR USA LLC. RECEIPT OF THESE DRAWINGS, IN PART OR IN FULL, FROM ANY PARTY AND IN ANY FORMAT CONSTITUTES EVIDENCE OF ACCEPTANCE OF THESE RESTRICTIONS.

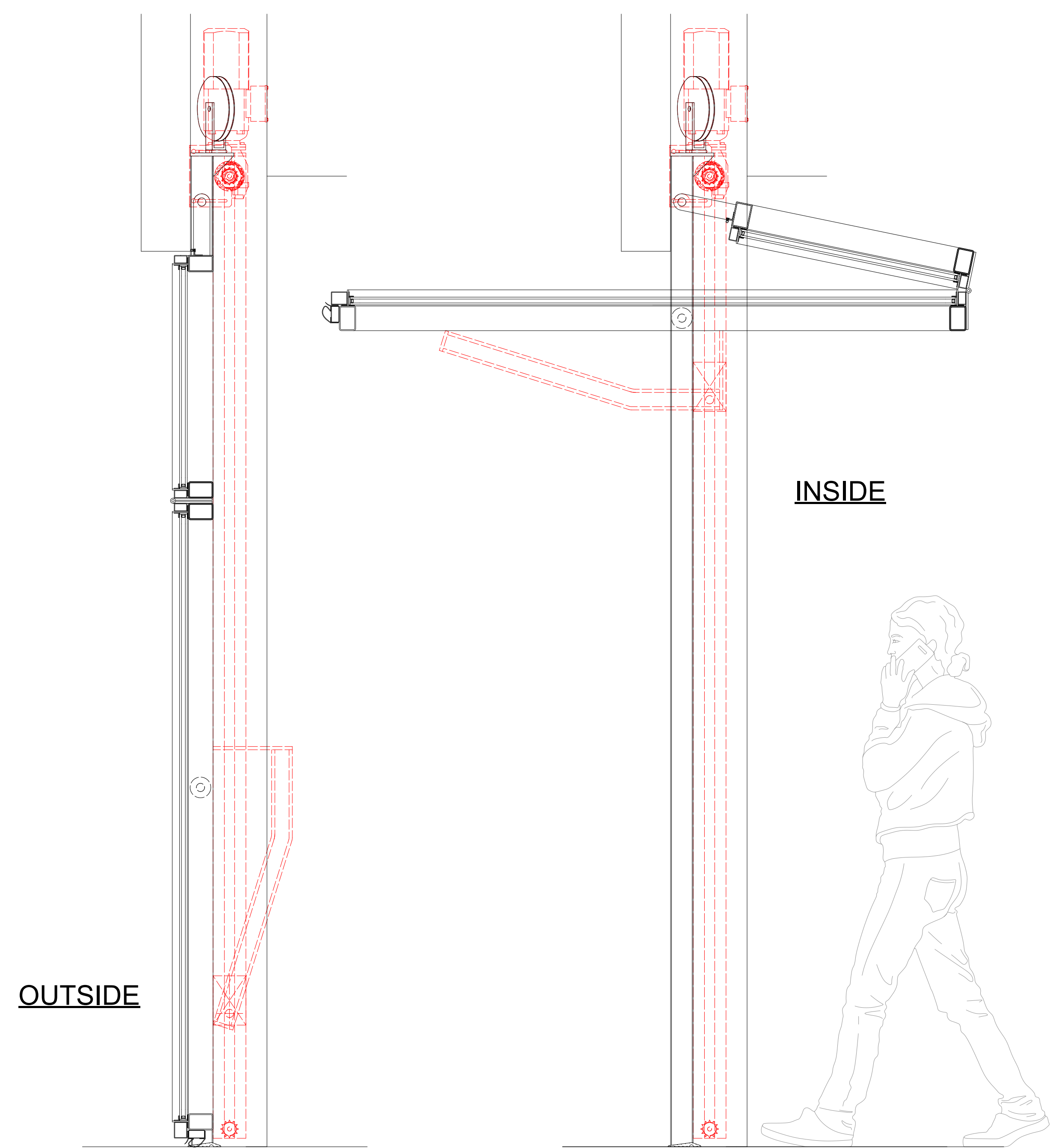
Rev	Date	By	Description

Drawn By: _____ Submittal: _____
 Date: **Jan. 23, 2023**
 Scale: **NTS**
 Drawing No: **D-02**

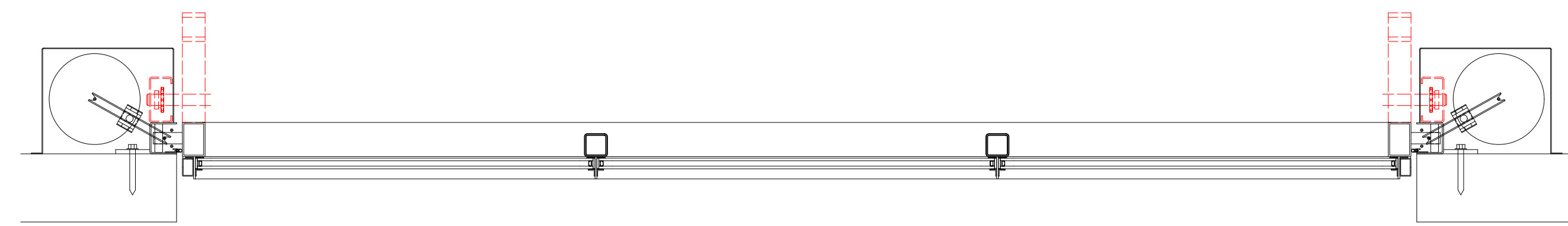
MAX WIDTH: 90 FT
MAX HEIGHT: 30 FT



EXTERIOR VIEW



OUTSIDE



TRI-FOLD VERTICAL LIFT DOOR

COUNTER WEIGHT BALANCED WITH **MOTOR OPTION**

EXAMPLE ELEVATION W SECTIONS

Project No:

System:
FS-50VL Tri-Fold
Steel, Stainless Steel or Bronze
Counter-balanced Vertical Lift Doors
Manual or Motorized

© 2024 Fenestar USA LLC

THESE DRAWINGS, AND PRODUCTS REPRESENTED HEREIN, ARE AND SHALL REMAIN THE PROPERTY OF FENESTAR USA LLC AND ANY REPRODUCTION, USE, SALE OR OTHER DISTRIBUTION OF THESE DOCUMENTS, OR THE DESIGN MATERIALS OR PRODUCTS HEREIN, INTERNALLY OR TO ANY OTHER PARTIES, IS EXPRESSLY FORBIDDEN WITHOUT THE WRITTEN CONSENT OF FENESTAR USA LLC. RECEIPT OF THESE DRAWINGS, IN PART OR IN FULL, FROM ANY PARTY AND IN ANY FORMAT CONSTITUTES EVIDENCE OF ACCEPTANCE OF THESE RESTRICTIONS.

Rev	Date	By	Description

Drawn By: Submittal:

Date: **Jan. 23, 2023**

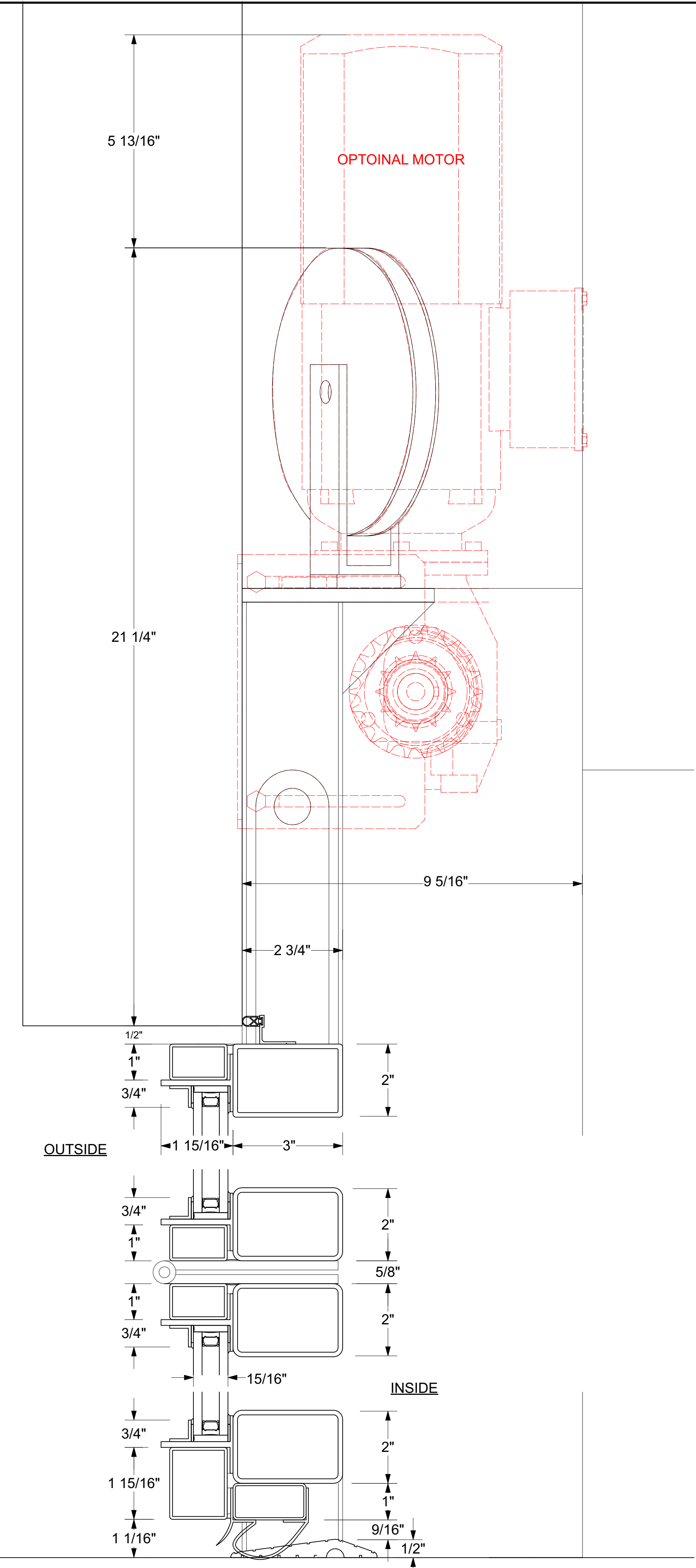
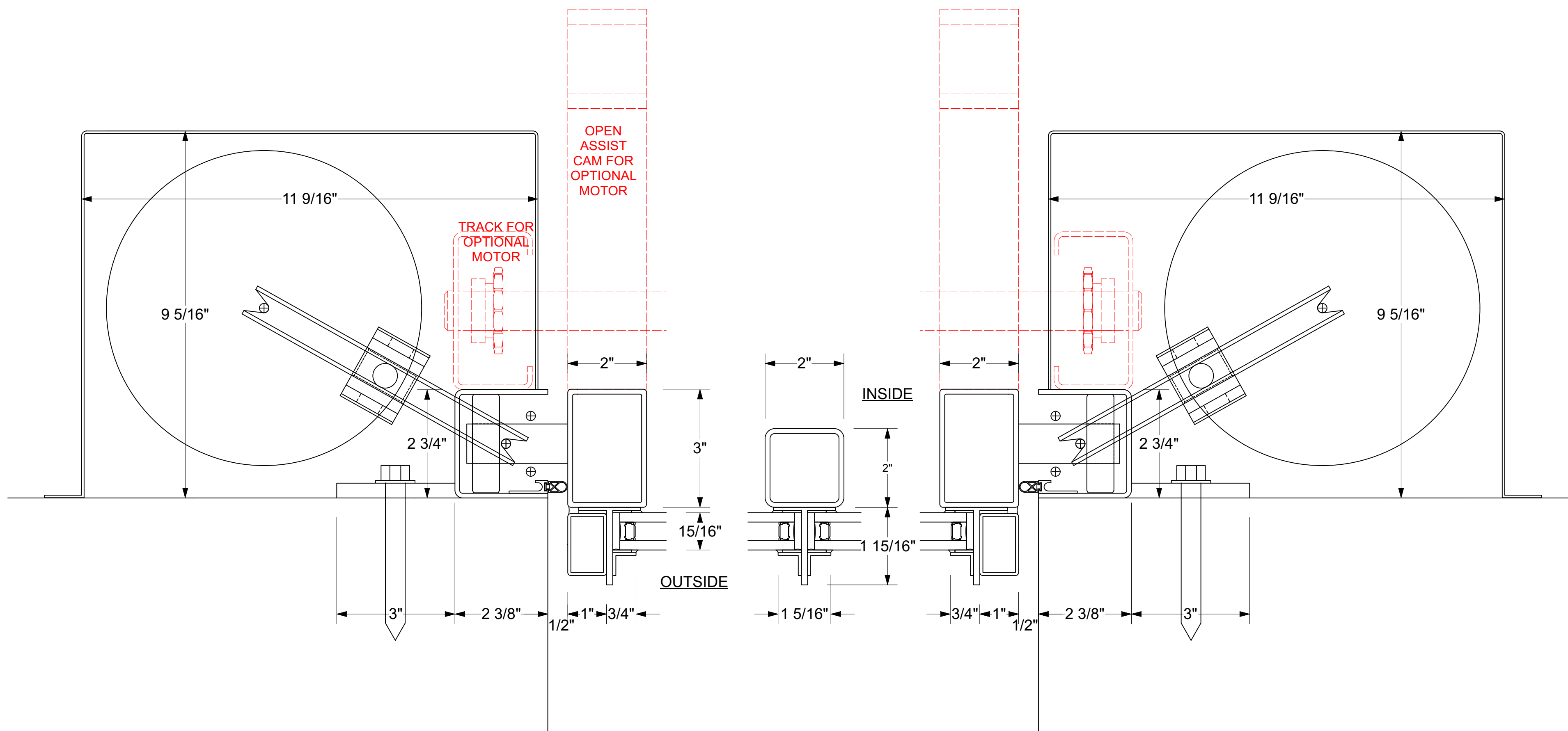
Scale: **NTS**

Drawing No: **E-03**

TRI-FOLD VERTICAL LIFT DOOR

COUNTER WEIGHT BALANCED WITH **MOTOR OPTION**

TYPICAL DETAILS



© 2024 Fenestar USA LLC
 THESE DRAWINGS, AND PRODUCTS REPRESENTED HEREIN, ARE AND SHALL REMAIN THE PROPERTY OF FENESTAR USA LLC AND ANY REPRODUCTION, USE, SALE OR OTHER DISTRIBUTION OF THESE DOCUMENTS, OR THE DESIGN MATERIALS OR PRODUCTS HEREIN, INTERNALLY OR TO ANY OTHER PARTIES, IS EXPRESSLY FORBIDDEN WITHOUT THE WRITTEN CONSENT OF FENESTAR USA LLC. RECEIPT OF THESE DRAWINGS, IN PART OR IN FULL, FROM ANY PARTY AND IN ANY FORMAT CONSTITUTES EVIDENCE OF ACCEPTANCE OF THESE RESTRICTIONS.

Rev	Date	By	Description