

# HOW TO SURVIVE THE MUNDANE!

A PARTY, A TOWER BLOCK AND A REALLY BORING WEEK TO FOLLOW.



CREATED BY THE C2C PARTICIPANTS AND  
CARE TO CULTURE TEAM

FUNDED BY ARTS COUNCIL



Supported using public funding by  
**ARTS COUNCIL  
ENGLAND**





# HOW TO SURVIVE THE MUNDANE!

*A party, a tower block and a really boring week to follow. What does the Mundane mean and why are we so afraid of it? Move with us and discover the joy and transformation that can be found in every day life and conversations when we strip back the drama and look into an eclectic group of random stories.*

## THE PATHWAY PLAN

THE PATHWAY PLAN IS A 6 MONTH PILOT PROJECT DESIGNED TO DEVELOP CREATIVE ARTISTS WHO HAVE EXPERIENCE OF THE CARE SYSTEM AND PAY THEM TO TRAIN AND CREATE WITH US. OVER THE LAST 6 MONTHS, WE HAVE MET BI-WEEKLY TO CREATE A SHOW THAT LOOKS AT JOY, THE MUNDANE AND TRANSFORMATION, WORKING WITH GUEST FACILITATORS AND THE CARE TO CULTURE TEAM.

THIS PROJECT IS ONE OF THE FIRST OF ITS KIND, OFFERING FINANCIAL LITERACY SKILLS SUCH AS CV WORKSHOPS, INVOICING SKILLS AND MORE AND EMBEDDING THAT IN THE STRUCTURE OF OUR COURSES. THE COURSE IS CREATED AS A SKELETON PROJECT WITH THE PARTICIPANTS CHOOSING WHAT SKILLS THEY WANT TO LEARN AND HONE AS THE PROJECT PROGRESSES.

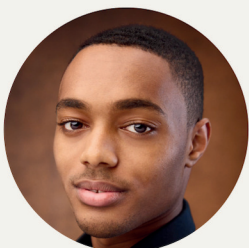
## CREATIVES



**DIRECTOR**  
BASHIIE



**MOVEMENT  
DIRECTOR**  
Kc



**ASSISTANT  
DIRECTOR**  
JORDAN  
HAYNES



**PASTORAL  
SUPPORT**  
JORDANN  
RHULE-CAMPBELL

# CAST



**ALEXANDER  
AMBROSE**

ALEXANDER AMBROSE IS AN ASPIRING WORDSMITH AND PERFORMER. HE'S PREVIOUSLY PERFORMED IN LITTLEWOOD STUDIO AND CORBETT THEATRE, HAVING COMPLETED A FOUNDATION ACTING COURSE AT EAST 15. HE'S CURRENTLY WITH THE CARE 2 CULTURE THEATRE COMPANY, WORKING ON CO-WRITING AND PERFORMING IN "HOW TO SURVIVE THE MUNDANE".



**DANIEL  
FESOOM**

DANIEL FESOOM IS AN ACTOR AND CREATIVE, WITH A PASSION FOR DISABILITY RIGHTS WORKING WITH ACTION ON DISABILITY. FESOOM HAS EXPERIENCE IN FRONT-OF-HOUSE ROLES AT THE ENGLISH NATIONAL OPERA AND HAS COMPLETED THEATRE COURSES, DEVELOPING SKILLS IN TEAMWORK, COMMUNICATION, AND FOLLOWING INSTRUCTIONS.



**FRANKIE  
ROBERTS**

FRANKIE (SHE/THEY) IS A FACILITATOR, ACTOR AND THEATRE MAKER USING THEATRE TO CREATE ALTERNATE WORLDS. FRANKIE HAS WORKED WITH BL!NK DANCE THEATRE, MAMASUZE, AND PERFORMED AT THE EDINBURGH AND CAMDEN FRINGE AND THE MINACK THEATRE. THEY HAVE PARTICIPATED IN THE ALMEIDA YOUNG COMPANY AND THE ARCOLA QUEER COLLECTIVE AND ARE CURRENTLY WORKING WITH THE LUNA WOMEN'S THEATRE PROJECT.



**LILIAN  
KAZDEKIAN  
MORA**

LILIAN, HAS A BACKGROUND IN PERFORMING ARTS AND THEATRE ARTS. LILLIAN COMPLETED A HND AND BA IN PERFORMING ARTS AND DEVSING, AND AN MA IN APPLIED ANTHROPOLOGY AND COMMUNITY ARTS. IDENTIFIED BY HER UNIQUE ACCENT THAT SHE EMBRACES, LILLIAN IS PASSIONATE ABOUT COMMUNICATION AND IDENTITY IN ALL OF HER WORK. SHE IS CURRENTLY WORKING IN A CHARITY AS A YOUTH MENTOR.



**ZEBKA KOLI**

ZEBKA IS AN INTERDISCIPLINARY ARTISTIC-ATHLETE WHO COMBINES ART AND SPORT TO HER DISCIPLINES. HER MAIN GOAL IS TO BREAK THE BARRIER OF GETTING INTO THE ARTS VIA REPRESENTATION. SHE IS DRAWN TO THOSE WHO SHARE SIMILAR AND DIFFERENT OPINIONS, PASSIONS AND INTERESTS BECAUSE SHE IS A CAREERIST.



**CHARLES  
FURNESS**

CHARLES IS AN ACTOR, FACILITATOR, WRITER AND ACTING COACH WITH 12 YEARS OF PROFESSIONAL PERFORMANCE AND ACTING WORK, WITH COMPANIES SUCH AS THE BBC, SKY, AND THEATRES SUCH AS THE YOUNG VIC, ROYAL COURT AND DOMARE WAREHOUSE. HIS WORK HAS AND HOPES TO TOUCH ON SUBJECTS CLOSE TO HIS HEAT, CLASS AND SEXUAL IDENTITY. CATCH HIM IN 'THE KILLING KIND ON PARAMOUNT



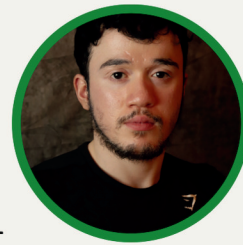
**ELICIA  
WESTMORELAND**

ELICIA WESTMORELAND IS A MARKETING AND CONTENT CREATOR AND MULTIDISCIPLINARY ARTIST. SHE HAS JUST COMPLETED HER MARKETING AND COMMUNICATIONS COURSE AT CURIOUS ACADEMY IN READING. HER MAIN GOAL IS TO ADVOCATE FOR WOMENS EQUALITY RIGHTS, FOCUSING ON BOUNDARIES AND ACCESS TO SPACES IN ALL OF THE WORK THAT SHE DOES.



**GEORGIA -LEAH  
SIMPSON**

GEORGIA-LEAH IS A MULTIDISCIPLINARY CREATIVE, INTERESTED IN SENSORY PRACTICE AND MOVEMENT. HER WORK FOCUSES ON HEALING, FRIENDSHIP, DISABILITY AND HAIR. SHE HAS COLLABORATED WITH ORGANISATIONS LIKE THE ATTENBOROUGH ARTS CENTRE AND INFUSE DANCE, PEER PRODUCTIONS AND THE UNIVERSITY OF KENT. CURRENTLY, SHE STUDIES AT UAL, ENJOYING EXPANDING HER PRACTICE AND COLLABORATING WITH OTHERS.



**RIHAD  
AHMED**

RIHAD, (HE/HIM) IS FOCUSED ON BEING A CREATIVE ARTIST AND ENTERTAINER, RIHADS EXPERIENCES INCLUDES NYT, ROYAL CENTRAL, PERFORMING IN THE WEST END, PERFORMING IN STAND UP, AND AMATEUR THEATRE COMPANIES. RIHAD IS CURRENTLY FINISHING HIS DEVISING PROGRAMME WITH CARE TO CULTURE AT THE BUSH THEATRE



# THANK YOU'S

WE WANT TO SAY A BIG THANK YOU AND GIVE A HUGE SHOUT OUT TO THE BUSH THEATRE, ITS STAFF AND TEAM FOR BEING SO KIND AND GENEROUS WITH THEIR SPACE, TIME AND RESOURCES AND BEING SO WELCOMING TO ALL OF OUR TEAM!  
AND OF COURSE A HUGE SHOUTOUT TO ARTS COUNCIL ENGLAND FOR FUNDING THE PROJECT AS WITHOUT THE HELP WE WOULDN'T HAVE BEEN ABLE TO DO THIS WORK.

MOST OF ALL WE WANT TO GIVE A ROUND OF APPLAUSE AND APPRECIATION TO ALL OF OUR FACILITATORS, TRAINEES, FRIENDS AND ASSOCIATES FOR ALL OF THEIR HARD WORK! WITH OUT YOU GUYS WE COULDN'T HAVE MADE THIS INCREDIBLE WORK WITH THESE INCREDIBLE PEOPLE!

SO A BIG THANK YOU AGAIN AND FOR THOSE READING, HIRE THEM! THEY'RE GREAT!

## GUEST FACILITATORS:

PRINCESS BESTMAN (WRITING FROM EXPERIENCE), KATIE GREENALL (WRITING AND MONOLOGUE SKILLS), AND TOM O'BRIEN (PERFORMANCE AND ACTING SKILLS)

## TRAINEE FACILITATORS

REISS SALFARLIE, LOUISA HAMDY AND JERMAINE KABALI

## CREATIVE ARTISTS:

LORIAN BEATON - SOUND DESIGN  
DAWSON FREDERICK - OPENING MONOLOGUE  
ARIA ARCHER - HEADSHOTS  
ADELA DAVIS - SOCIAL MEDIA  
SAMIA DJILLI - PRE-PRODUCTION PRODUCER  
ATG CREATIVE ENGAGEMENT - C2C TRAILER

# IF YOU LIKED THE SHOW!

## BECOME A CARE GIVER TODAY!

YOUR SUPPORT AND CONTRIBUTIONS WILL ENABLE US TO MEET OUR GOALS AND IMPROVE THE WAY WE OUR PROGRAMMES ARE RUN. ALL OF OUR PARTICIPANTS ARE PAID FOR THEIR CONTRIBUTIONS AND CREATIVE INPUT, SO YOUR DONATION WILL GO DIRECTLY INTO ENABLING THESE YOUNG ARTISTS TO ACCESS OUR SPACES AND HONE THEIR SKILLS IN THE CREATIVE INDUSTRY!

YOUR GENEROUS ONE OFF DONATION WILL GO TOWARDS FUNDING OUR MISSION.  
OR SIGN UP TO REGULAR DONATIONS ONLINE ON OUR WEBSITE: