

Bunny Knoll on Wander Lane #171P

designs by Nancy Halvorsen

Bunny Knoll Quilt
fabric requirements by SKU
Wander Lane I & Whisper Weave
from Benartex

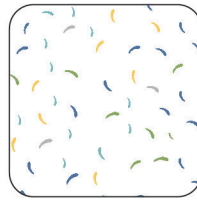
- One fat quarter of each of these for backgrounds, patchwork and applique:



13600-99
Wander Lane
Multi



13604-24
Criss Cross
Aqua



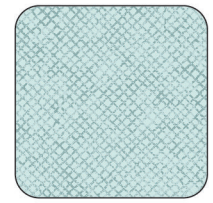
13606-09
Snippets
White



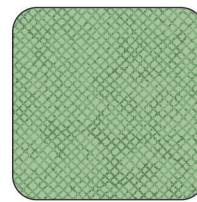
13607-07
Vines
Cream



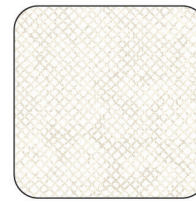
13608-70
Fences
Almond



13610-24
Whisper Weave
Aqua



13610-44
Whisper Weave
Melon



13610-72
Whisper Weave
Almond

- One fat eighth of each of these for background, patchwork and applique:



13601-24
Primrose Path
Aqua



13602-08
Blossom Scallop
Slate



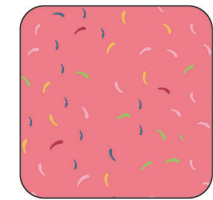
13603-45
Posies
Willow



13605-27
Wild Berry
Coral



13605-07
Wild Berry
Multi



13606-26
Snippets
Salmon



13606-33
Snippets
Marigold



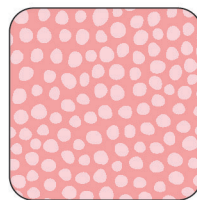
13607-24
Vines
Aqua



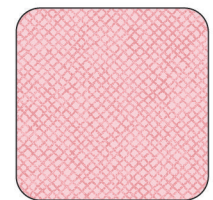
13608-30
Fences
Dafodil



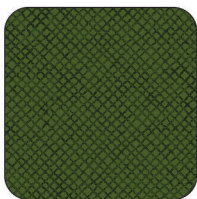
13608-54
Fences
Bluegrass



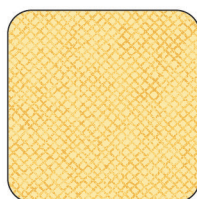
13609-27
Dew Drops
Coral



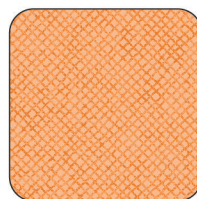
13610-02
Whisper Weave
Coral



13610-48
Whisper Weave
Dark Forest



13610-30
Whisper Weave
Daffodil



13610-34
Whisper Weave
Apricot

(continued on page 2)



Bunny Knoll on Wander Lane #171P

designs by Nancy Halvorsen

Bunny Knoll Quilt
fabric requirements by SKU
Wander Lane I & Whisper Weave
from Benartex

(continued from page 1)

- Scraps or one fat eighth of each of these for applique and patchwork:



13602-48
Blossom Scallop
Forest



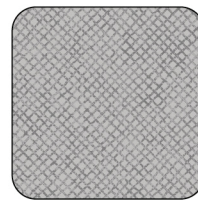
13607-43
Vines
Willow



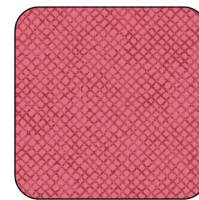
13609-10
Dew Drops
Brick



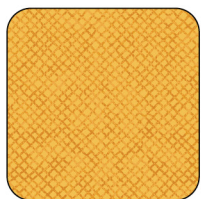
13610-08
Whisper Weave
Cloud



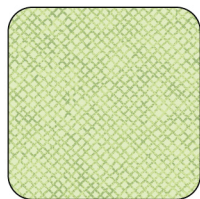
13610-13
Whisper Weave
Nickle



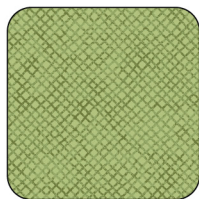
13610-26
Whisper Weave
Salmon



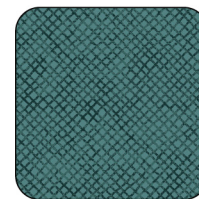
13610-32
Whisper Weave
Amber



13610-40
Whisper Weave
Celery



13610-45
Whisper Weave
Willow



13610-84
Whisper Weave
Teal

- 3/4 yard for patchwork, borders and binding:



13604-40
Criss Cross
Celery

- One yard for quilt back:



13601-22
Primrose Path
Apricot

ART TO
HEART