

Liberty Heights on Wander Lane #174P

designs by Nancy Halvorsen

Liberty Heights Quilt
fabric requirements by SKU
Wander Lane I & Whisper Weave
from Benartex

- One fat quarter of each of these for backgrounds, patchwork and applique:



13600-99
Wander Lane
Multi



13605-07
Wild Berry
Multi



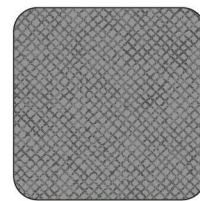
13607-07
Vines
Cream



13607-24
Vines
Aqua



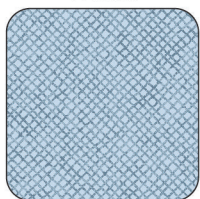
13608-70
Fences
Almond



13610-14
Whisper Weave
Slate



13610-41
Whisper Weave
Leaf



13610-51
Whisper Weave
Denim

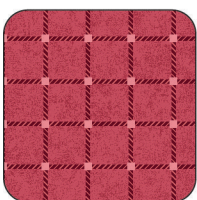
- One fat eighth of each of these for background, patchwork and applique:



13601-99
Primrose Path
Multi



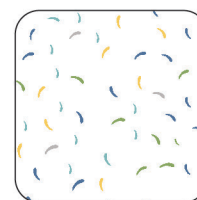
13602-11
Blossom Scallop
Navy



13604-10
Criss Cross
Brick



13604-24
Criss Cross
Aqua



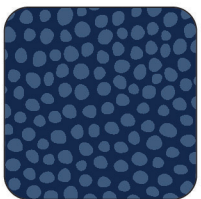
13606-09
Snippets
White



13606-26
Snippets
Salmon



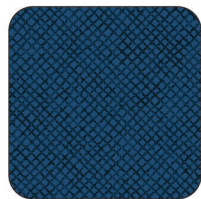
13609-10
Dew Drops
Brick



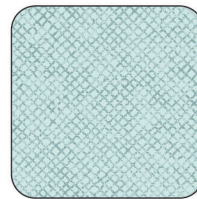
13609-11
Dew Drops
Navy



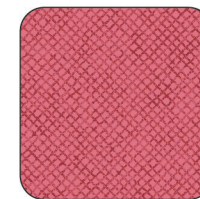
13610-10
Whisper Weave
Brick



13610-11
Whisper Weave
Navy



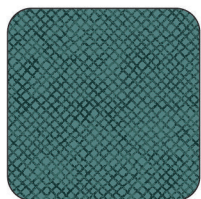
13610-24
Whisper Weave
Aqua



13610-26
Whisper Weave
Salmon



13610-72
Whisper Weave
Almond



13610-84
Whisper Weave
Teal

(continued on page 2)



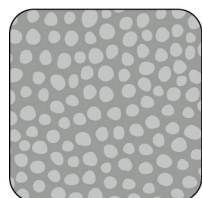
Liberty Heights on Wander Lane #174P

designs by Nancy Halvorsen

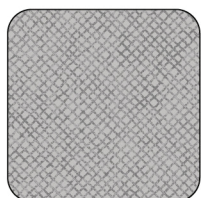
Liberty Heights Quilt
fabric requirements by SKU
Wander Lane I & Whisper Weave
from Benartex

(continued from page 1)

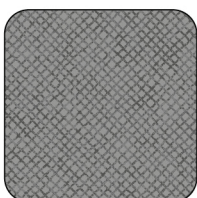
- Scraps or one fat eighth of each of these for applique and patchwork:



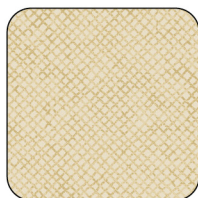
I3609-14
Dew Drops
Nickle



I3610-13
Whisper Weave
Nickle



I3610-14
Whisper Weave
Slate



I3610-72
Whisper Weave
Oatmeal



- 3/4 yard for patchwork,
borders and binding:



I3608-54
Fences
Bluegrass

- One yard for quilt back
and pieced blocks:



I3601-11
Primrose Path
Navy

